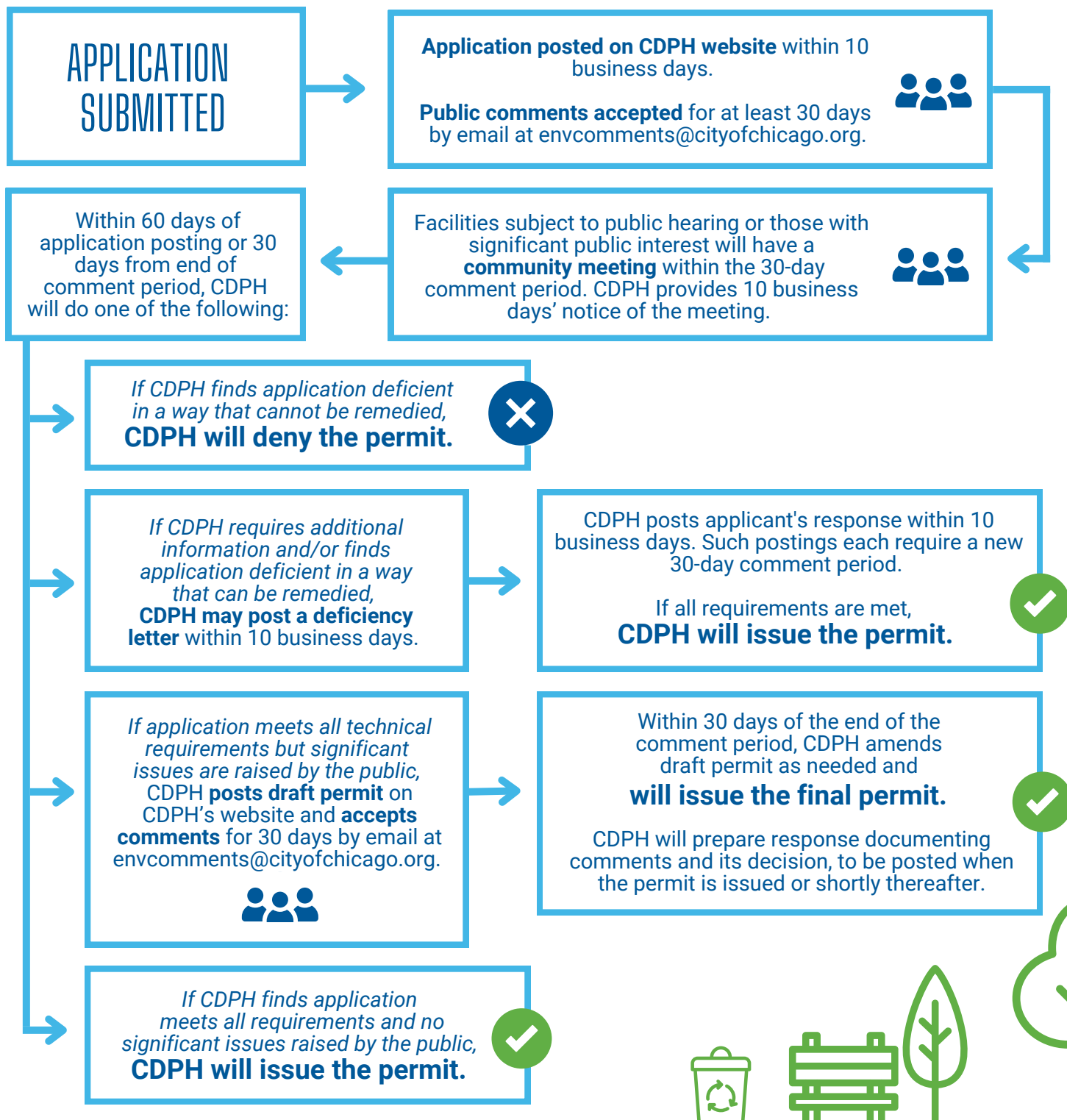


# CDPH PERMIT PROCESS GUIDELINES FOR CONSEQUENTIAL FACILITIES

The Chicago Department of Public Health (CDPH) has expanded public engagement for consequential large recycling, reprocessible construction/demolition material and waste handling facilities. All permit materials will be posted on the [CDPH website](#).



= Opportunity for public comment



CDPH will adhere to this process to the extent possible. CDPH may modify the guidelines as necessary to promote the public interest, including to accommodate other public agencies' processes. Guidelines here do not apply to renewal applications that (a) Do not require a special use variance from the Zoning Board of Appeals; (b) Are not subject to any new rule or ordinance requirements since the applicant's most recent application was approved by CDPH; and (c) Are not seeking an increase in the horizontal or vertical boundary of the facility or a permit capacity increase of more than 10% above the limits established under the current permit.

Notices for waste handling and reprocessible construction/demolition material facilities will be posted in accordance with the Rules of Procedure for Notice of Hearings. To view the Rules requirements for permit applicants, please visit [here](#). To view the Code requirements for permit applicants, please visit [here](#).