

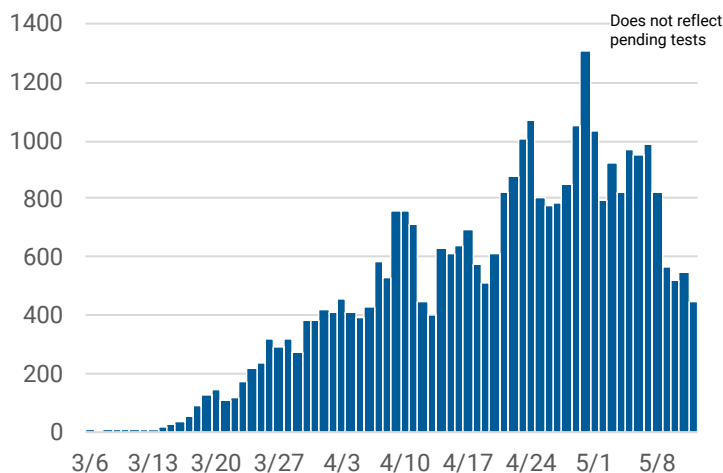


CHICAGO COVID-19 UPDATE

May 13, 2020

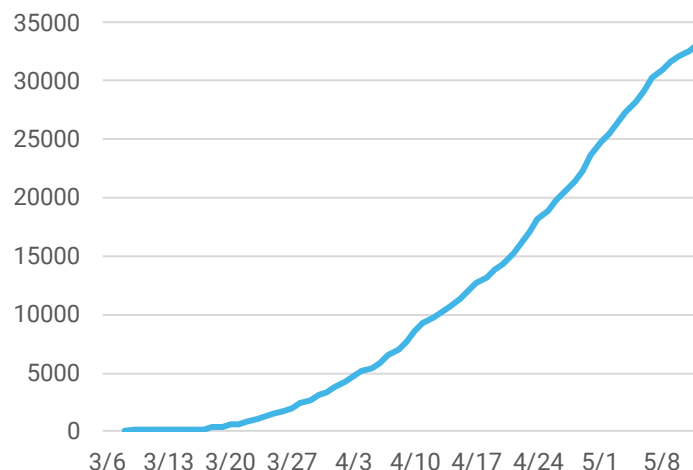
There are **33,120** cases of COVID-19 and **1,499** deaths among Chicago residents as of May 13, 2020. This is an increase of **525** cases and **64** deaths since yesterday.

Confirmed daily COVID-19 cases



Daily and cumulative coronavirus 2019 (COVID-19) cases reported for Chicago residents with known laboratory report date. Results for several previous days are updated each day. Note, there was one case of COVID-19 reported in January 2020 that is not included in the daily counts.

Confirmed cumulative COVID-19 cases



COVID-19 Morbidity and mortality by geography

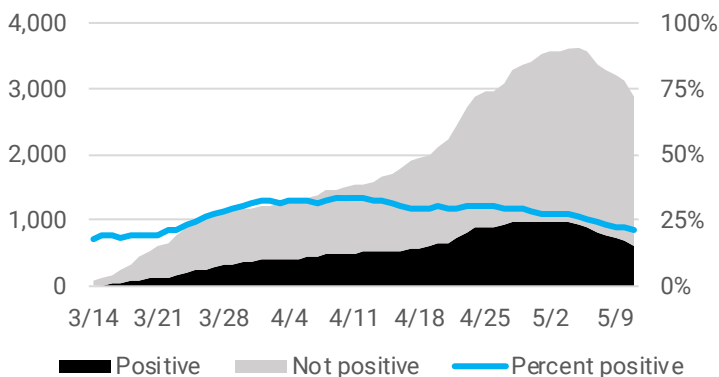
GEOGRAPHY	CASES ¹	DEATHS
Chicago	33,120	1,499
Illinois (IDPH link)	84,698	3,792
U.S. (CDC link)	1,364,061	82,246
World (WHO link)	4,179,479	287,525

¹Does not include persons with pending COVID-19 tests or persons with COVID-19 related illness who have not been tested.

As of May 13, 2020, there have been **118,885** individuals tested. The 7-day average is **3,125** individuals tested per day, with a percent positivity of **22.3%**.

Average daily COVID-19 testing

*Number of individuals tested and percent of tests that were positive averaged over 7 days.



Individuals tested at state and private laboratories with known specimen collection date. Tests performed between Jan 21 and Mar 4, 2020 are not included in graph. CDPH may not receive all non-positive results.

COVID-19 Case characteristics for Chicago residents

CHARACTERISTIC	NUMBER	% TOTAL CASES ¹	RATE PER 100,000
Chicago	33,120	100%	1,224.0
Age			
0-17	1,050	3.1%	191.3
18-29	5,433	16.4%	982.6
30-39	5,785	17.5%	1,267.7
40-49	6,149	18.6%	1,827.6
50-59	5,978	18.0%	1,910.1
60-69	4,305	13.0%	1,636.9
70+	4,392	13.3%	1,866.4
Under investigation	28	0.1%	-
Gender			
Female	15,974	48.2%	1,152.4
Male	16,265	49.1%	1,232.3
Under investigation	881	2.7%	-
Race-ethnicity²			
Latinx	10,221	42.1%	1,316.0
Black, non-Latinx	8,100	33.3%	1,032.8
White, non-Latinx	3,992	16.4%	443.6
Asian, non-Latinx	740	3.0%	411.5
Other, non-Latinx	1,247	5.2%	1,043.8
Under investigation	8,820	26.6%	-

²Race-ethnicity percentage is calculated among those with known race-ethnicity as reported by the medical provider.

COVID-19 Death characteristics for Chicago residents

CHARACTERISTIC	DEATHS	% TOTAL DEATHS	% DEATHS WITHIN GROUP	RATE PER 100,000 POP
Chicago	1,499	100%	4.5%	55.4
Age				
0-17	0	0%	0%	0
18-29	13	0.9%	0.2%	2.4
30-39	27	1.8%	0.5%	5.9
40-49	79	5.3%	1.3%	23.5
50-59	167	11.1%	2.8%	53.4
60-69	308	20.5%	7.2%	117.1
70+	905	60.4%	20.6%	384.6
Gender				
Female	605	40.3%	3.8%	43.6
Male	893	59.6%	5.5%	67.7
Under investigation	1	0.1%	0.1%	-
Race-ethnicity²				
Latinx	388	26.2%	3.8%	50.0
Black, non-Latinx	717	48.3%	8.9%	91.4
White, non-Latinx	287	19.4%	7.2%	31.9
Asian, non-Latinx	71	4.8%	9.6%	39.5
Other, non-Latinx	20	1.3%	1.6%	16.7
Under investigation	16	1.1%	0.2%	-

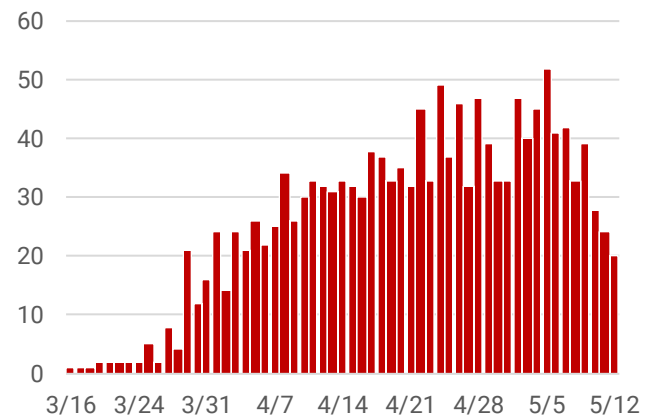
²Race-ethnicity percentage is calculated among those with known race-ethnicity as reported by the medical provider.

Underlying chronic conditions among Chicago residents who died from COVID-19

CHARACTERISTIC	NUMBER	% OF KNOWN
Known medical history	1,453	-
Underlying chronic conditions ³	1,345	92.6%
No underlying chronic conditions	108	7.4%
Under investigation	46	-

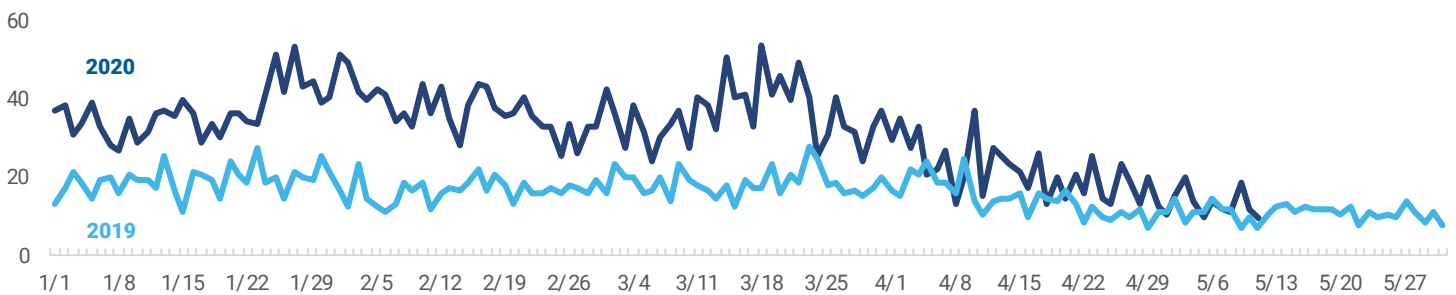
³Cases with at least one underlying chronic condition. Most common underlying conditions include diabetes, hypertension, and lung disease.

Daily COVID-19 deaths

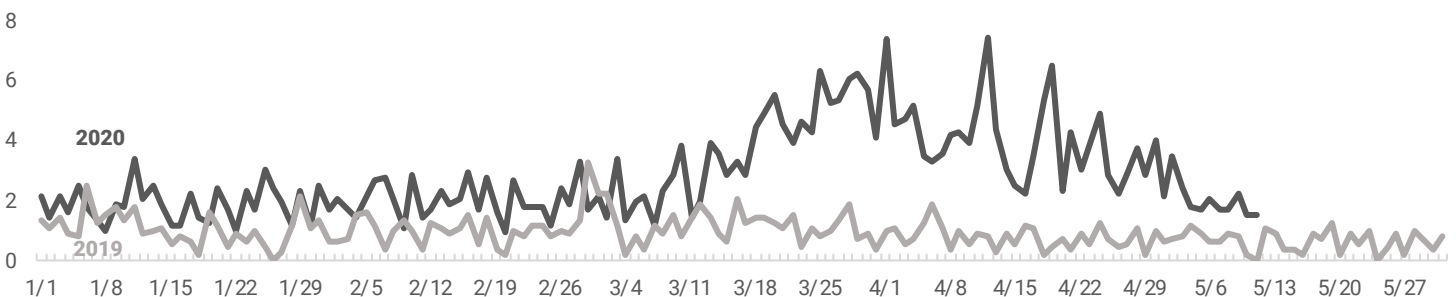


COVID-19 symptoms are similar to those of influenza, so monitoring influenza-like illness (ILI) may also help identify COVID-19. ILI activity in 2020 that is higher than what was experienced in 2019 could indicate the presence of COVID-19 in the community.

Percent of daily emergency department (ED) visits due to influenza-like illness in Chicago among all age groups, 2020 vs. 2019



Percent of daily emergency department (ED) visits due to influenza-like illness in Chicago among persons aged 65+, 2020 vs. 2019



Percent of daily emergency department visits attributed to influenza-like illness for Chicago zip codes based on chief complaint submitted to ESSENCE.