

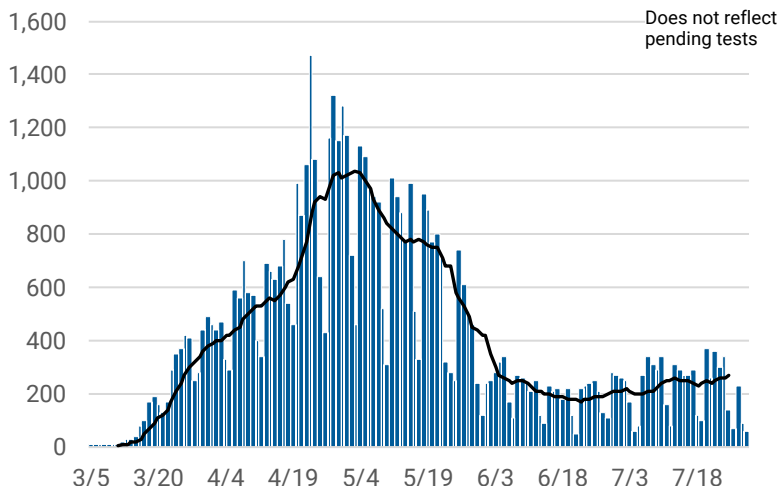


# CHICAGO COVID-19 UPDATE

July 30, 2020

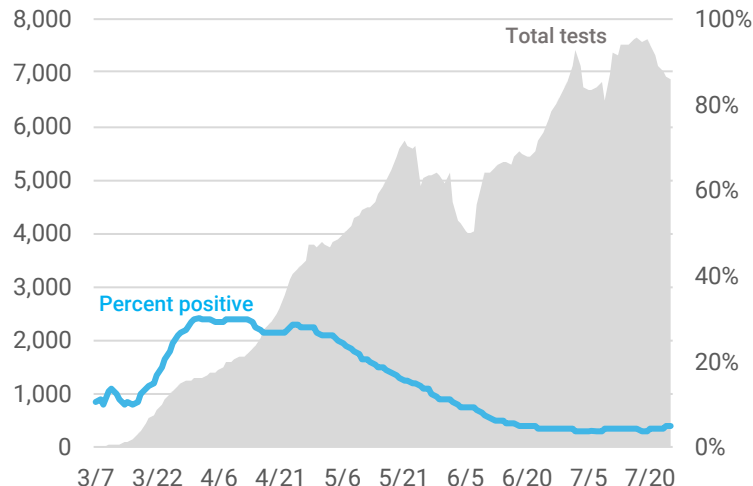
**There are 60,376 cases of COVID-19 and 2,775 deaths among Chicago residents as of July 30, 2020. There are an average of 266 new cases and 3 deaths every day. An estimated 54,592 residents have recovered.<sup>1</sup>**

Confirmed daily COVID-19 cases and 7-day rolling average



Daily COVID-19 cases reported for Chicago residents with known specimen collection date. Results for several previous days are updated each day. Two cases with specimen collection dates prior to March 1, 2020 are not included in the graph.

COVID-19 testing and percent positivity, 7-day rolling average



Number of tests performed and percentage of tests that were positive averaged over 7 days. Includes molecular tests performed at state and private laboratories with known specimen collection date. Percent positivity is based on number of tests. Tests performed between Jan 21 and Feb 29, 2020 are not included in graph. CDPH may not receive all non-positive results.

## COVID-19 Case characteristics for Chicago residents

CHARACTERISTIC	NUMBER	% TOTAL CASES <sup>2</sup>	RATE PER 100,000
<b>Chicago</b>	<b>60,376</b>	<b>100%</b>	<b>2,231.2</b>
<b>Age</b>			
0-17	3,327	5.5%	606.0
18-29	12,092	20.0%	2,186.9
30-39	10,894	18.0%	2,387.4
40-49	10,636	17.6%	3,161.2
50-59	9,807	16.2%	3,133.6
60-69	6,928	11.5%	2,634.3
70+	6,682	11.2%	2,839.5
Under investigation	10	0.0%	-
<b>Gender</b>			
Female	30,287	50.2%	2,185.0
Male	29,108	48.2%	2,205.4
Under investigation	981	1.6%	-
<b>Race-ethnicity<sup>3</sup></b>			
Latinx	22,754	46.9%	2,929.7
Black, non-Latinx	14,489	29.9%	1,847.5
White, non-Latinx	7,496	15.5%	832.9
Asian, non-Latinx	1,317	2.7%	732.3
Other, non-Latinx	2,452	5.0%	2,052.4
Under investigation	11,868	19.7%	-

**As of July 30, 2020, there have been 598,356 tests performed. The 7-day average is 6,899 tests per day, with a percent positivity of 4.6%\*.**

\*Please note: Beginning on 7/30/2020, percent positivity is calculated based on number of tests conducted rather than number of people tested, to align with IDPH practices.

## COVID-19 Morbidity and mortality by geography

GEOGRAPHY	CASES <sup>2</sup>	DEATHS
<b>Chicago</b>	<b>60,376</b>	<b>2,775</b>
Suburban Cook County ( <a href="#">IDPH</a> )	44,315	2,097
Illinois ( <a href="#">IDPH</a> )	176,896	7,478
U.S. ( <a href="#">CDC</a> )	4,405,932	150,283
World ( <a href="#">WHO</a> )	16,812,755	662,095

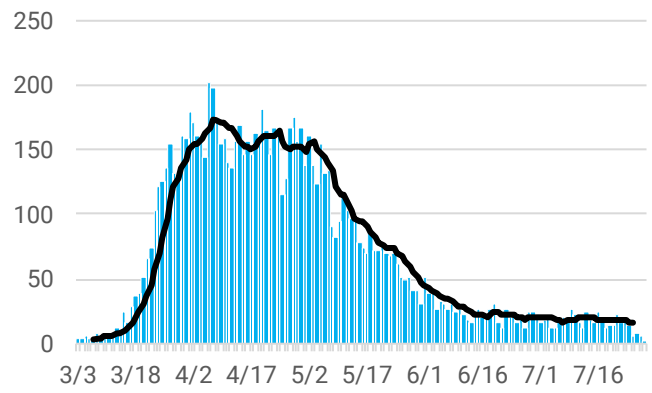
<sup>1</sup> Recovered is an estimate based on 14 days post diagnosis for people not hospitalized or 30 days post hospitalization for people hospitalized among those who have not died.  
<sup>2</sup> Does not include persons with pending COVID-19 tests or persons with COVID-19 related illness who have not been tested.  
<sup>3</sup> Race-ethnicity percentage is calculated among those with known race-ethnicity as reported by the medical provider.

## COVID-19 Death characteristics for Chicago residents

CHARACTERISTIC	DEATHS	% TOTAL DEATHS	% DEATHS WITHIN GROUP	RATE PER 100,000 POP
<b>Chicago</b>	<b>2,775</b>	<b>100%</b>	<b>4.6%</b>	<b>102.6</b>
<b>Age</b>				
0-17	2	0.1%	0.1%	0.4
18-29	20	0.7%	0.2%	3.6
30-39	68	2.5%	0.6%	14.9
40-49	148	5.3%	1.4%	44.0
50-59	311	11.2%	3.2%	99.4
60-69	607	21.9%	8.8%	230.8
70+	1,619	58.3%	24.2%	688.0
<b>Gender</b>				
Female	1,146	41.3%	3.8%	82.7
Male	1,629	58.7%	5.6%	123.4
Under investigation	0	0%	0%	-
<b>Race-ethnicity<sup>3</sup></b>				
Latinx	904	32.7%	4.0%	116.4
Black, non-Latinx	1,185	42.9%	8.2%	151.1
White, non-Latinx	533	19.3%	7.1%	59.2
Asian, non-Latinx	121	4.4%	9.2%	67.3
Other, non-Latinx	20	0.7%	0.8%	16.7
Under investigation	12	0.4%	0.1%	-

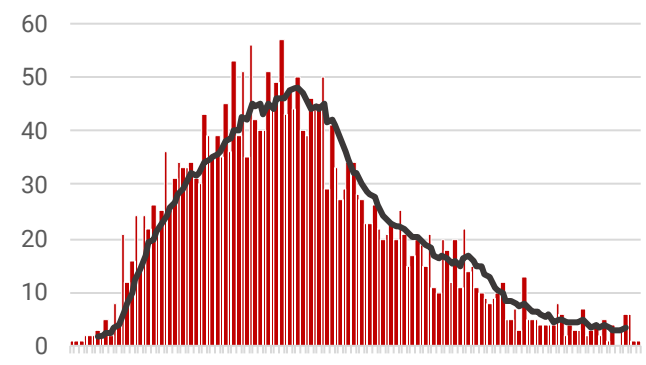
<sup>3</sup>Race-ethnicity percentage is calculated among those with known race-ethnicity as reported by the medical provider.

Daily COVID-19 hospitalizations and 7-day rolling average



Chicago resident COVID-19 cases who have been hospitalized, by date of first hospitalization. Results for several previous days are updated each day.

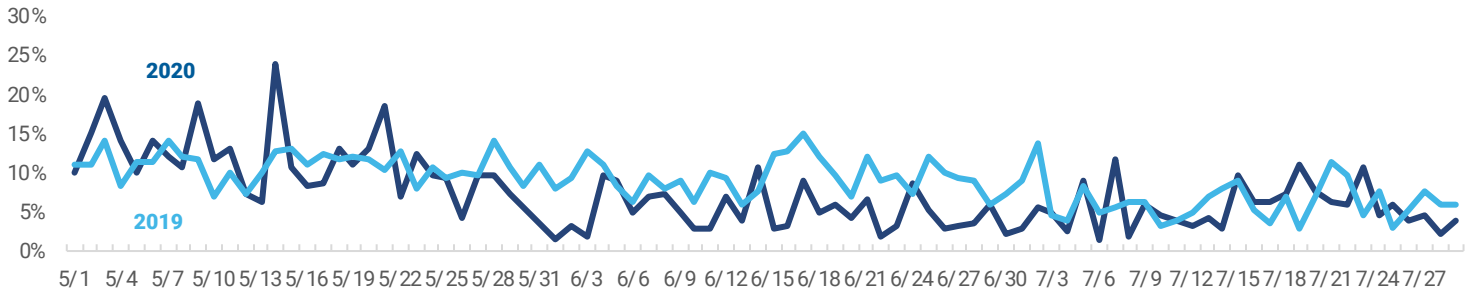
Daily COVID-19 deaths and 7-day rolling average



Chicago resident COVID-19 cases who have died, by date of death. Results for several previous days are updated each day.

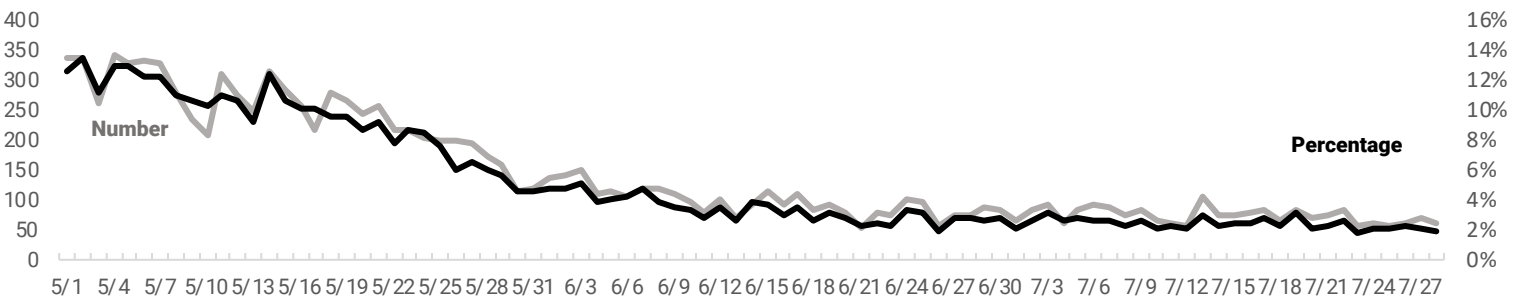
COVID-19 symptoms are similar to those of influenza, so monitoring influenza-like illness (ILI) may also help identify COVID-19. ILI activity in 2020 that is higher than what was experienced in 2019 could indicate the presence of COVID-19 in the community.

### Percentage of daily emergency department (ED) visits due to influenza-like illness (ILI) in Chicago, 2020 vs. 2019



COVID-19-like illness (CLI) is a new tool used to help track trends in COVID-19 activity. An increase in the number and percentage of ER visits due to CLI could indicate an increase in COVID-19 activity in the community.

### Number and percentage of daily emergency department (ED) visits due to COVID-19-like illness (CLI) in Chicago, 2020



Percentage of daily emergency department visits attributed to ILI and CLI for Chicago zip codes based on chief complaint submitted to ESSENCE.