

The Welcoming City



**Community Briefing
December 6, 2023**



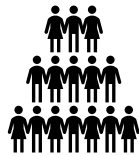
1. **Advocate** for immigrant, migrant and refugee rights
2. Provide **strategic leadership and operations guidance** for the asylum seeker response effort
3. Operationalize the **Welcoming City Ordinance** across city departments and agencies
4. Promote **long-term integration** of immigrants, migrants, and refugees into the life of Chicago through multi-sector partnerships and coalitions
5. Share **resources and accurate information** about immigration policy and immigrant integration



By the numbers



557 buses that have arrived since August 2022
448 since May 12, 2023



Over **23,400** new arrivals since August 2022
• Chartered Buses • Flights • Independent Travel



30 shelters have been utilized within City network
• 26 in current operation



13,445 current shelter residents
• 640 awaiting shelter in Police Stations and Airports





Current Shelters Overview

Current Census: 13,035
Total Shelters: 26
Wards with Shelters: 19

Shelter Population Breakdown

Single Women = 4%
Single Men = 24%
Families = 72%

Current Beds Needed: 1,184

- 1,033 CPD Police Districts
- 151 at ORD
- 0 at MDW

Total Buses This Week
17

Total New Arrivals Responsible For: ~14,500



Current Shelters Overview

Current Census: 13,435

Total Shelters: 26

Wards with Shelters: 21

Shelter Population Breakdown

Single Women = 4%

Single Men = 24%

Families = 72%

Current Beds Needed: 640

- 451 CPD Police Districts
- 164 at ORD
- 0 at MDW

Total Buses This Week

28

Buses in violation since Nov. 18, 2023

56

Total New Arrivals Responsible For: ~14,000



Placed in shelter this week

1,662

people exiting our system in the last 7 days

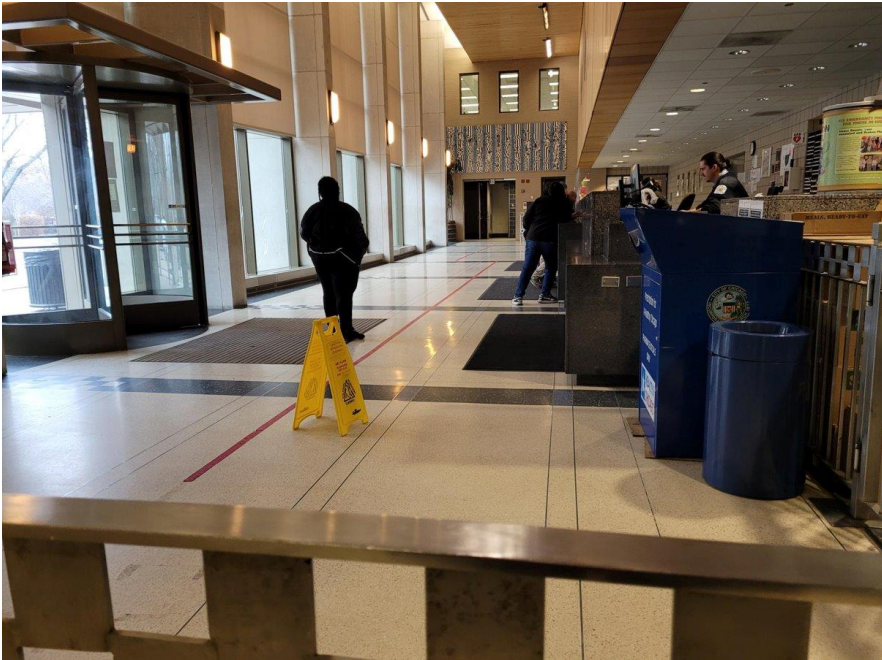


796

- Catholic Charities has **reunited over 3,000 people** with family and friends in other cities across the United States



- People awaiting shelter at CPD police stations: **451**
- Families at landing zone transported directly to shelter



Retired police stations: District 2, District 3, District 4, District 5, District 8, District 9, District 11, District 15, District D16, District 17, District 18, District 19, District 22, District 24

Open police stations:

District 1, District 6, District 7, District 10, District 12, District 14, District 20, District 25

Incoming Winter Weather Planning

- Continue use of CTA warming buses with incoming inclement weather
- Utilize Park District and Library facilities during daytime as needed
- Coordinating donations of winter gear
- Faith communities opening their doors to house people during the inclement weather



Photos by Chicago Tribune

- **Base Camp Tent sites**
 - 38th and California
 - CVS Litte Village
 - 115th and Halsted
- **Brick and mortar shelter**
 - Locations under assessment



Federal Coordination

- Working group with FEMA, county and state agencies to support city response
- Ongoing TPS workshops at city-run shelters
 - State exploring expansion outside of shelter system

- **Donate or Volunteer**

- With mutual aid groups helping at police districts
- Amazon Wish List: [**chicago.gov/support**](https://www.chicago.gov/support)
- Winter items (new preferred) dropped off at **4401 W. Ogden** (Mon-Friday, 8AM-5PM)
- Winter items (new and gently used) dropped off at one of Cradles 2 Crayons several locations
- Volunteers at [New Life Centers Warehouse](#)



- **Recommend Sites for Shelters or Apartments**
 - Suggest potential shelters or rental units
 - <https://www.chicago.gov/city/en/sites/texas-new-arrivals/home/shelter.html>
- **Advocate** for State and Federal Action





021



**Thank you for
your partnership.**