



# Community Safety Coordination Center Overview

Board of Health

Wednesday, November 16<sup>th</sup>, 2022



# The Community Safety Coordination Center is comprised of 47 budgeted and assigned staff who include full-time staff (26), departmental details (9), community representatives (7), and consultants supporting project management (6).

**\$3.8 M**

## **COORDINATION AND ENGAGEMENT**

Efforts to coordinate community safety and violence prevention strategies internally and externally

Funding supports the staffing and administrative needs necessary to coordinate a public health approach to violence across City departments and agencies; engage with and provide resource support for community partners; and coordinate local High Risk Intervention Teams.

**\$8.9 M**

## **PLACE-BASED STRATEGIES**

Strategies that address the physical locations where violence occurs

The CSCC oversees several place-based programs to reduce violence, including coordinating across departments to clean and fence vacant lots, prioritizing public safety service requests, and implementing the Home and Business Protection Program, providing residents and businesses with the tools necessary to protect their homes.

**\$15.8 M**

## **PEOPLE-BASED STRATEGIES**

Strategies that address the needs of those most at risk of violence

The CSCC's people-based focus includes expanding mental health training to violence prevention service providers, launching an antiviolence public education campaign, and ensuring emergency supplemental funding is available to gun violence survivors to address immediate needs such as funeral, medical, or relocation costs.



# Coordination and Engagement

# Community Safety as a Public Health Framework



Smallest  
population  
impacted,  
greatest  
indiv. effort



Largest  
population  
impacted,  
least indiv.  
effort

Levels of Intervention	Description
<b>Crisis Response</b>	Crisis systems <b>response to occurrence of violence</b> after prevention & intervention efforts to promote healing and prevent reoccurrence
<b>Support for Individuals &amp; Families At-Risk</b>	Holistic services that support <b>individuals at risk, survivors of violence, and their families</b> in order to prevent occurrences of violence
<b>Community Revitalization &amp; Reinvestment</b>	<b>Targeted place-based</b> efforts to revitalize and reinvest in neighborhoods that have historically been disinvested to reduce poverty & poor health outcomes, and build community resilience, wealth, and wellness
<b>Systemic Transformation</b>	Initiatives to <b>reform &amp; transform systems, institutions, and culture</b> to enable opportunity and address systemic racism

**Enablers** (across all interventions): community-based, data-driven, evidence-based, coordinated



Developing new coordination effort to reduce violence at housing developments



Prioritizing vacant lot cleaning to high violence blocks



Prioritizing violence prevention programming to students enrolled at Options Schools

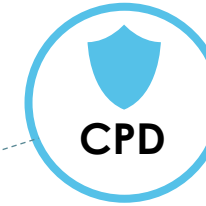


Targeting enforcement to businesses contributing to violence

Prioritizing lighting repairs and replacements to high violence blocks



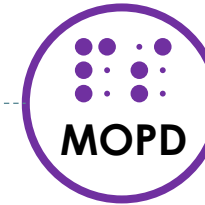
Coordinating with departments to ensure law enforcement efforts are supported with non-law enforcement efforts to address the root causes of violence



Expanding violence interventions funding for victim services and street outreach

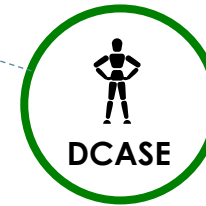


Providing community development grants to build safe spaces in priority communities



Implementing new grant funding to support survivors of violence with long-term disabilities

Implementing a security plan that incorporates bus and train stop revitalization



Funding temporary survivor memorials and art installations in vacant lots

Requiring delegate agencies provide 50% of employment and mentoring programming to opportunity youth



Partnering with CPS to provide safe passage during summer months and increasing lighting and activities at night

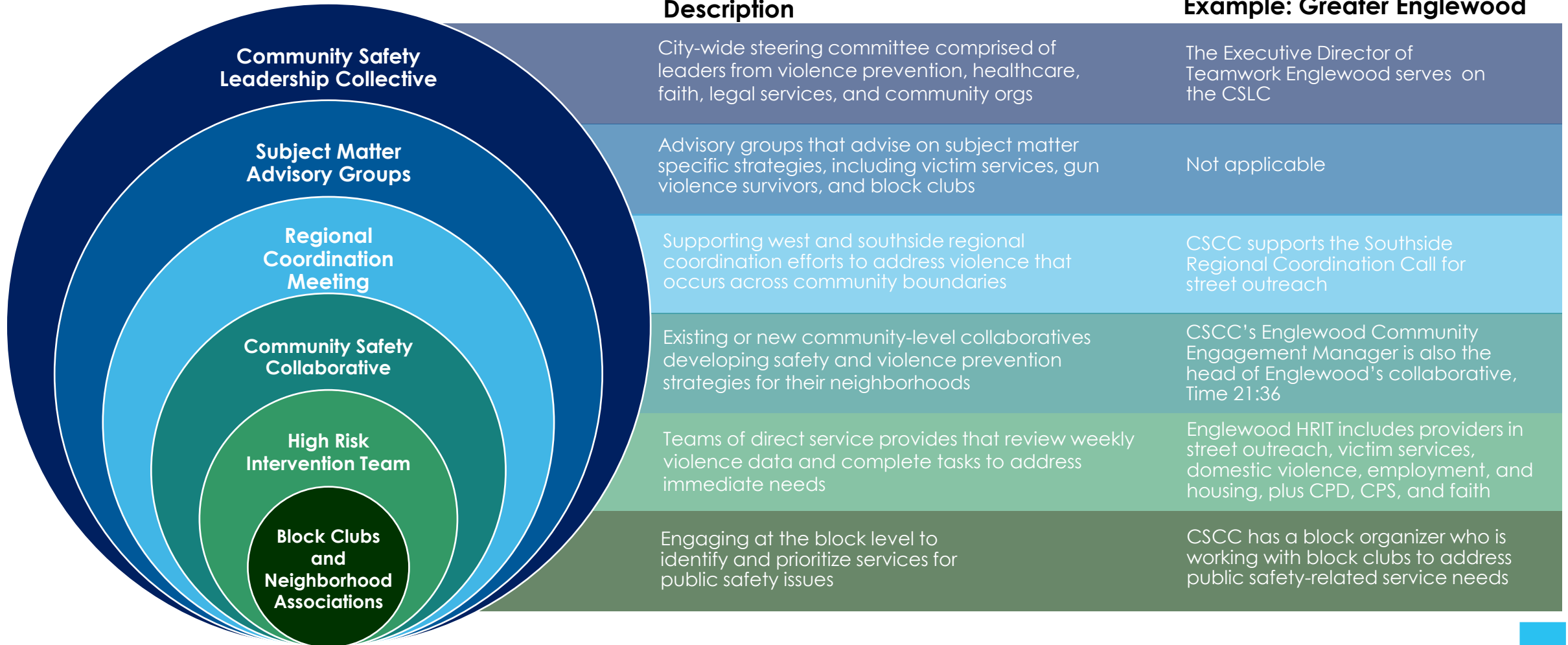


Targeting workforce opportunities to 18-29 year old's in priority communities

**City departments and agencies have used the Community Safety Framework to identify how their initiatives support safety and where gaps need to be addressed.**



# The CSCC supports coordination and engagement at multiple levels to ensure the City's approach to violence reduction is hyperlocal and comprehensive.



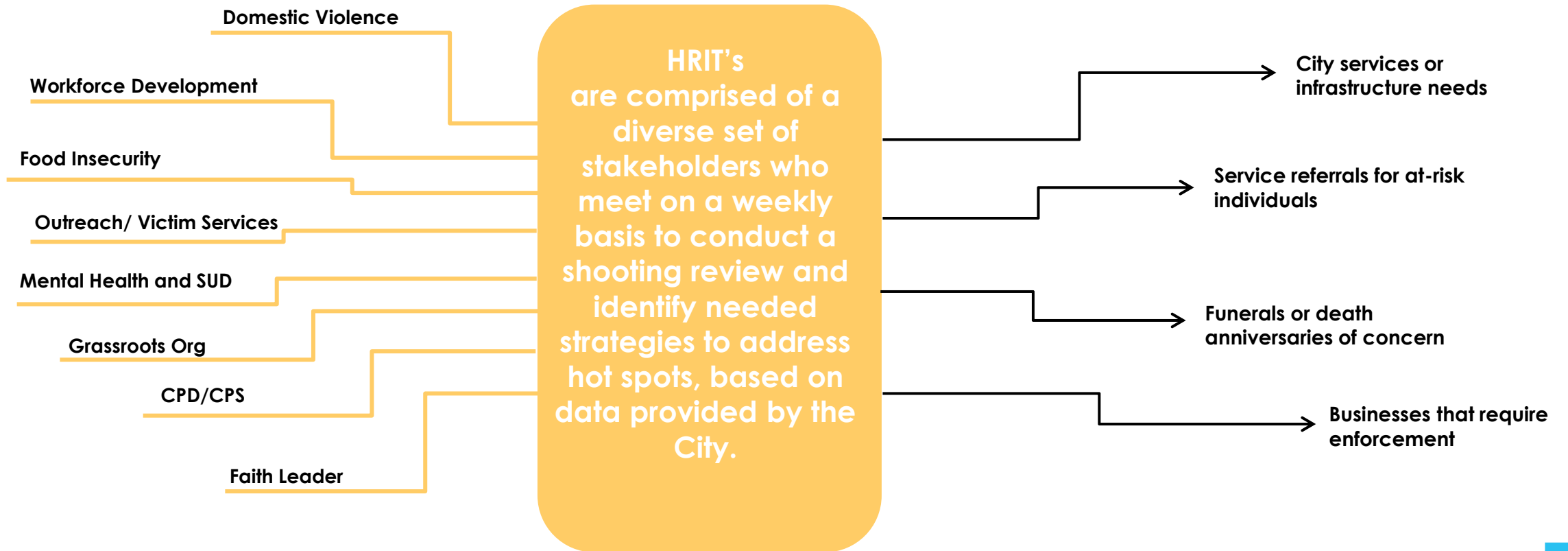


# The CSCC is active in 15 priority communities with deep engagement occurring in 9 of those communities.

Community	Englewood	Little Village	North Lawndale	Garfield Park	Auburn Gresham	South Shore	Back of The Yards
ENG ACTV							
Community Safety Table	Time 21:36	VPC	NLCCC	GPRW	AG Comm Safety Table	South Shore Works	Peace and Education
Table-Top Ex.	2021	2021	2021	2021	October 2022	October 2022	October 2022
CEM	Tiffany Liles	R. Casteneda	PENDING	T. Thompson			
CORE BO	PENDING	R. Valdez	PENDING	G. Mathews	PENDING	PENDING	PENDING
HRIT	ACTIVE			ACTIVE	ACTIVE	ACTIVE	ACTIVE



**High Risk Intervention Teams are active in eight communities, including South Shore, Back of the Yards, Auburn Gresham, Garfield Park, Englewood, and Parkway Gardens.**





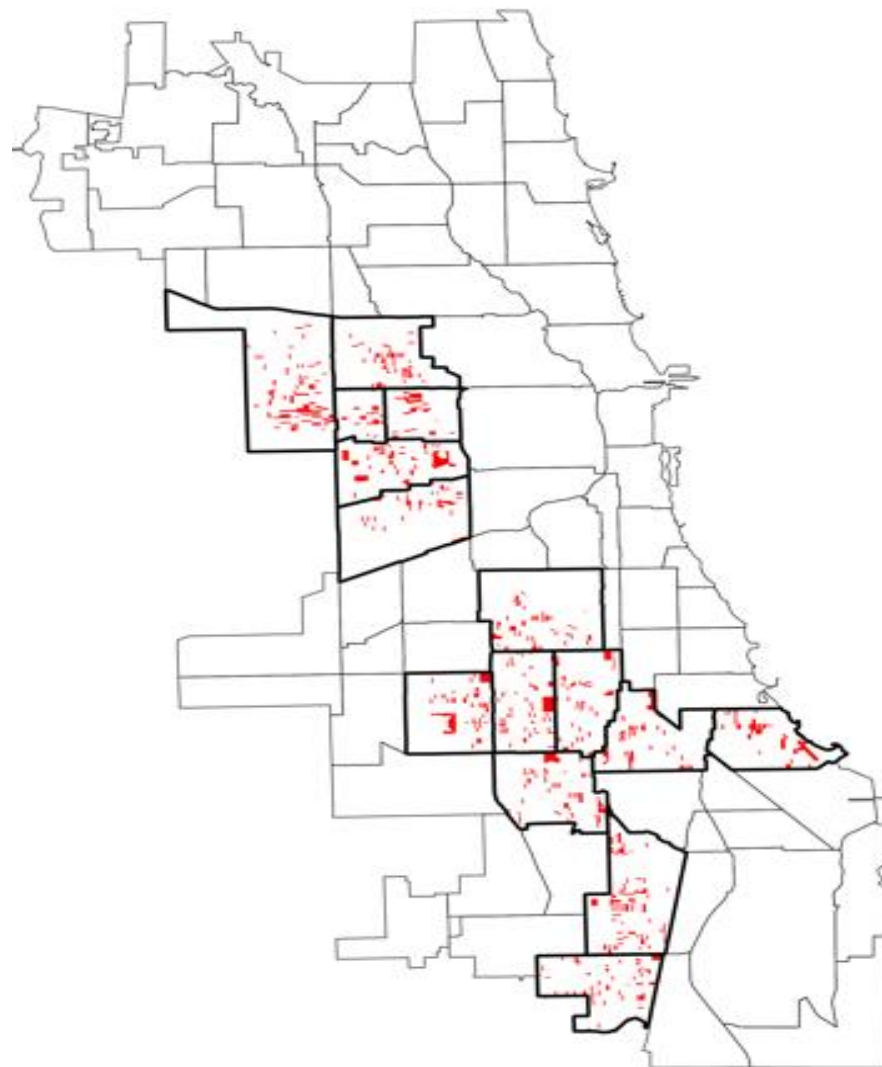


# Place-Based Strategies



**21.8% of non-fatal shootings and homicides occurred on the top 5% of blocks in the CSCC community areas between 2016-2021**

**Top 5% of blocks where non-fatal shootings and homicides occurred in each community area from 2016-2021**





# IMPROVING THE STREETScape

## FRAMEWORK LEVEL

Community Revitalization

## FOCUS AREA

Top 5% of Violent Blocks in CSCC Areas

## OVERVIEW

The City is conducting streetscape surveys on the 659 most violent census blocks in 15 communities, identifying where improvements and maintenance are needed to ensure all streets are safe to walk and drive on, have ample lighting, have trees and greenery, and that abandoned buildings and vacant lots are being maintained.

## EVIDENCE BASIS

Improvements in the physical environment are proven to decrease mental fatigue and tendencies towards psychological aggressions, as well as increases social interactions, decreasing violent behavior.

## KEY METRICS

- Number of maintenance operations completed on 659 blocks between April & October 2022: **412**
- Violent crime rates on 659 blocks between April 2022 and October 2022: **Under review**
- Perception of safety amongst block residents: **Under review**



# VACANT LOT GREENING

## FRAMEWORK LEVEL

Community Revitalization

## FOCUS AREA

Top 5% of Violent Blocks in CSCC Areas

## OVERVIEW

The City is cleaning, greening, and maintaining vacant lots that are on and around blocks that experience the most violence across our 15 communities. The goal is to green over 600 vacant lots this summer with hopes of finding a mechanism to fund local CBO's for maintenance.

## EVIDENCE BASIS

Cities that have implemented vacant lot programs have seen decreases in violent crime by up to 40% and increases in perception of safety by as much as 55%. Vacant lot greening is generally considered the most cost-effective violence reduction strategy.

## KEY METRICS

- Number of vacant lots cleaned, greened, and/or maintained (**450**)
- Perception of safety amongst residents on blocks with vacant lots **Under review**
- Violent crime rates on 659 blocks between April 2022 and October 2022 **Under review**

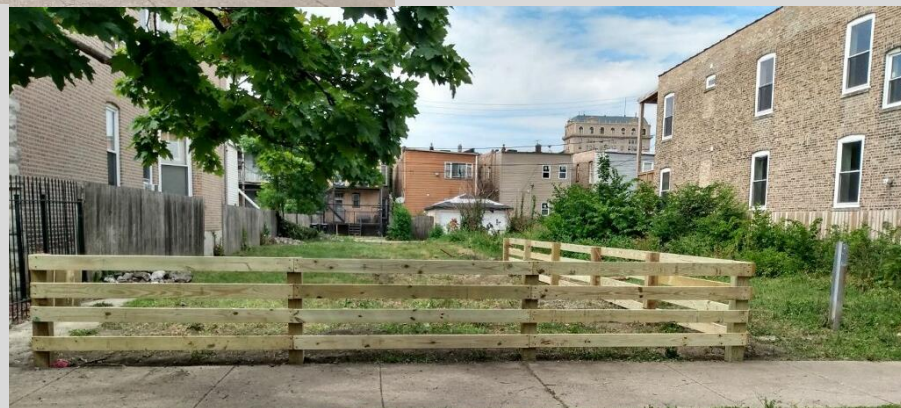


Vacant lot is cleaned by the City, removing trash, illegal items, and towing vehicles



Land is prepped by removing existing concrete or barriers and grading the land

A four-rail split fence is installed with a gate towards the alley for continued access



Through October 2022:

- **525** vacant lots cleaned at least twice
- **63** vacant lots fenced

Challenges identified during 2022 include hiring and retainment, safety, and the need for block-level community engagement.

Expansion of workforce development programming, small grants to community networks, and new fencing contracts will allow the City to clean up to 2,000 vacant lots monthly in 2023 and fence up to 1,000 lots.





# HOME & BUSINESS PROTECTION PROGRAM

## FRAMEWORK LEVEL

Systemic Transformation

## FOCUS POPULATION

Chicago Residents and Business Owners


## OVERVIEW

The City is empowering home and business owners by providing reimbursement for purchase of outdoor security cameras, outdoor lighting, and vehicular tracking devices. The City will also purchase outdoor cameras and work with community organizations to distribute them on blocks that experience the most violence, in addition to other resources such as lighting for block clubs.

## EVIDENCE BASIS

A rebate program instituted in Washington D.C. provided rebates to residents and business owners, resulting in over 22,000 cameras receiving reimbursement since 2017 and over 40 arrests made for violent crime utilizing footage from those cameras.

## KEY METRICS

- Number of cameras registered with the Chicago Police Department
  - Number of residents/business owners receiving rebate and number of items reimbursed
  - Number of items distributed through CBO's on high violence blocks
  - Number of requests for footage made by CPD and number of arrests made due to footage
- 



# To date, footage from cameras registered with the Chicago Police Department through HBPP is being used in over 60 investigations.

## Rebate: Launched June 6, 2022

- 5,331 applications received
  - 3,452 applications approved for a total of \$866,701
  - 1,705 applications denied
  - 174 currently pending
- Most denials stem from incomplete or lacking verification documentation

## Income-Based: Launched Sept. 15th

- 2,481 applications received
  - 1,158 applications automatically approved through UBR/CPR
  - 328 applications are pending review
- 38 aldermanic offices and 7 libraries volunteered to participate in distribution
- Cameras and Lights to begin distribution in the next several weeks





# People-Based Strategies





# ANTIVIOLENCE COMMUNITY AWARENESS CAMPAIGN

## FRAMEWORK LEVEL

Systemic Transformation

## FOCUS POPULATION

Residents aged 18-29 years old in CSCC areas

## OVERVIEW

The City will partner with community to create and implement an antiviolence marketing campaign implemented across the City and at the hyperlocal level that utilizes paid, earned, and social media to increase individual and collective responsibility for violence and decrease disrespectful online behavior that leads to violence.

## EVIDENCE BASIS

Generally social marketing campaigns are proven to be an effective framework for behavior change interventions, including the ability to increase the willingness of bystanders to intervene in violent situations.

## KEY METRICS

- Increases in engagement across social media platforms
- Click through rates from social media and visits to CSCC via QR codes on print media
- Impressions on social media and print content from CSCC focus communities



# The Ripple Effect - Continued

**OVER 15M** SOCIAL MEDIA & RADIO IMPRESSIONS

---

**800K** SOCIAL MEDIA VIDEO VIEWS


FROM THE RIPPLE EFFECT CAMPAIGN

---

OUR SOCIAL MEDIA ACCOUNTS HAVE REACHED

**OVER 2M** PEOPLE

SINCE MAY 31 2022




“Most of the time, when people pull the trigger, these are really cries of pain, they are cries of hurt, they are cries for help and support, they are cries that reflect the powerlessness that people feel.”

TJ Crawford,  
Executive Director of the Garfield Park Rite to Wellness Collaborative

THE RIPPLE EFFECT  
CHICAGO



“The answer for all of this is all of us. Putting our personal interest aside and working for the common good... all of us, our neighbors and people we do not even know, are part of the solution.”

Maria Pike,  
Survivor and Gun Safety Activist

THE RIPPLE EFFECT  
CHICAGO



# MENTAL HEALTH SKILLS BUILDING

## FRAMEWORK LEVEL

Support for Individuals and Families

## FOCUS AREA

CSCC Community Areas of Focus

## OVERVIEW

The CSCC will work to better equip the workforce who regularly interact with those at highest risk of violence by conducting a symposium between mental health care providers, street outreach and victim services workers, and faith leaders to provide an opportunity to better understand how to identify trauma in the field and connect those in need with mental health services. The CSCC will also launch a sports-based training initiative to provide lay workers with the skills necessary to teach those at risk cognitive behavioral techniques.

## EVIDENCE BASIS

Research since the late 1980's reveals a significant connection between exposure to community violence and psychological impacts, resulting in poor academic performance, an inability to form trusting relationships, desensitization towards violence, and an increase in aggressive behavior.

## KEY METRICS

- Number of individuals trained in trauma-informed response techniques – **200+**
- Geographic distribution of those trained in trauma-informed response techniques
- Referrals of those at highest risk of violence to mental health care providers



# Next Steps for the CSCC

# ★ Four major near-term inputs to support the long-term growth of the CSCC

