



Friends of the Chicago River

**RIVER CORRIDOR
PUBLIC LAND ASSESSMENT TOOL**



WHAT IS THE PUBLIC LAND ASSESSMENT TOOL (PLA)?

A **consolidated map** of public parcels and other relevant features **within a 1/2 mile of the Chicago River system** (all 156 miles, not just within the City of Chicago).

A catalogue of **publicly-owned, vacant, and other open space parcels** with potential to expand habitat and other beneficial green space on or near the river's edge.

A search and query tool that filters layers to **help focus advocacy efforts** to the most promising projects.

WHY WAS THE PLA TOOL CREATED?

To assess public land that can be protected or enhanced to **improve water quality, expand public access, and improve habitat.**

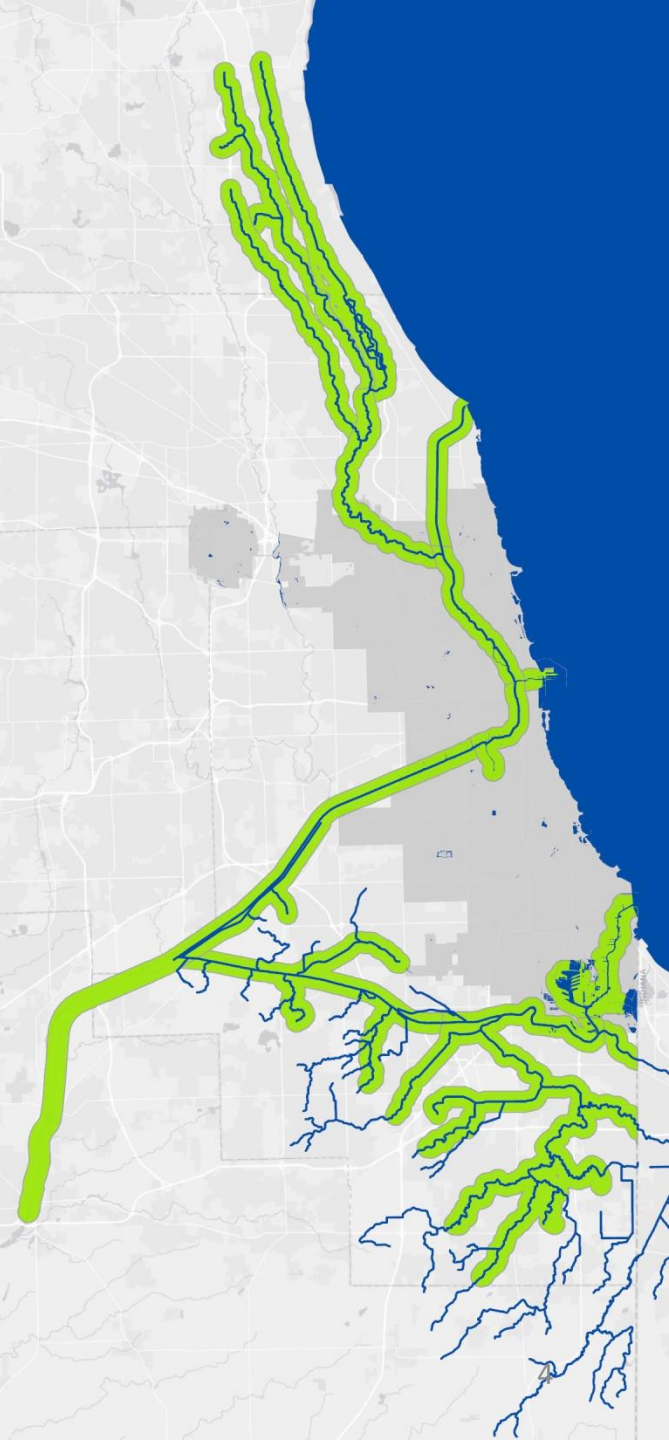
The assessment was created to provide:

1. A comprehensive assessment of river-edge, publicly owned land in the region with the potential to expand wildlife habitat.
2. Support for a continuous river-edge trail framework that includes expanding wildlife corridors as a core goal.

THE PLA SUPPORTS OUR BROADER BLUE | GREEN CORRIDOR VISION

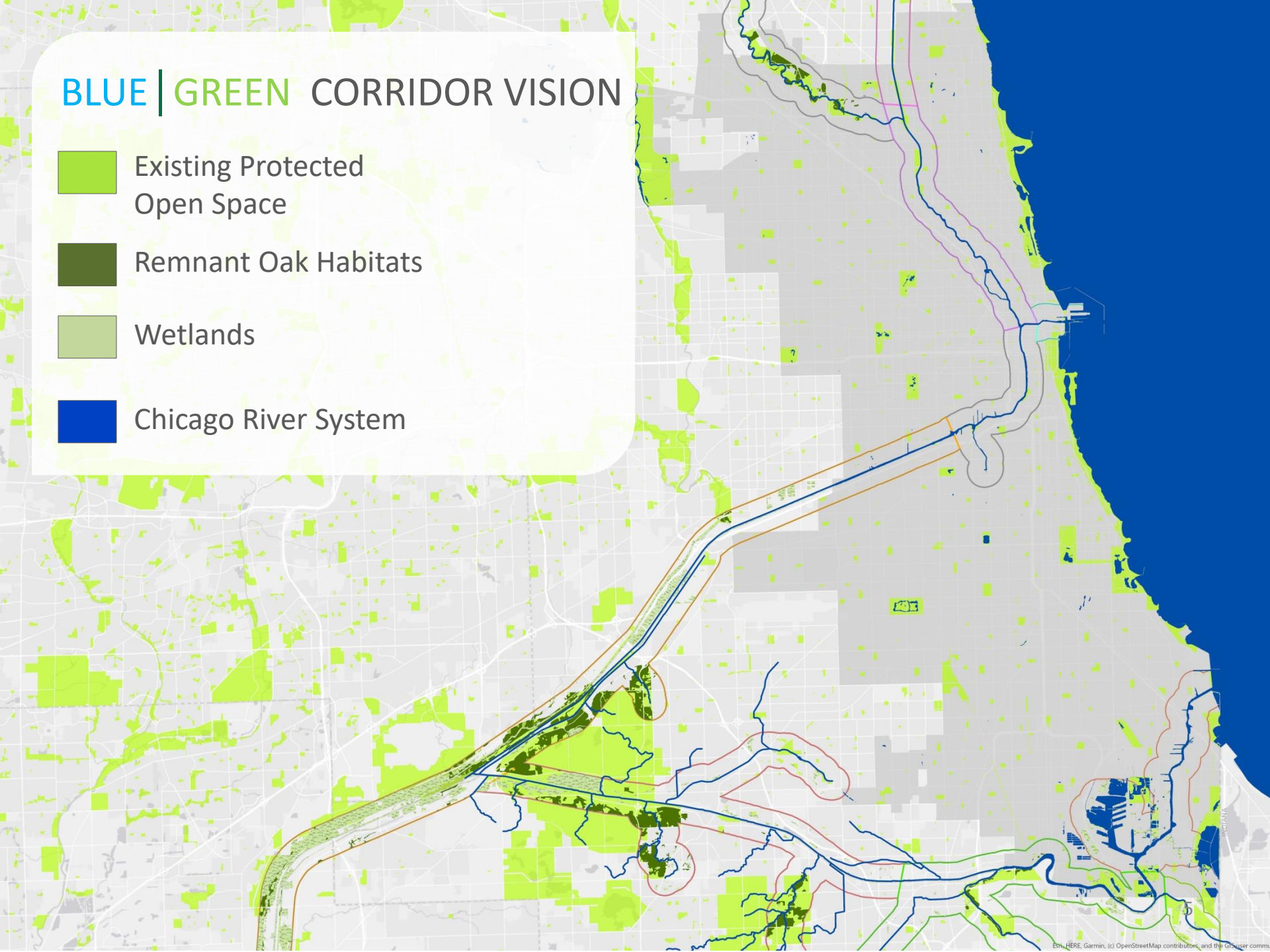
In the face of **climate change** and pressure from a **rapidly urbanizing context**, the protection and enhancement of a **blue/green corridor is essential to the future health of the region**. The core principles of the corridor are to:

1. Expand recreational access for people.
2. Improve and increase habitat for native wildlife.
3. Allow for the unobstructed movement of wildlife.



BLUE | GREEN CORRIDOR VISION

-  Existing Protected Open Space
-  Remnant Oak Habitats
-  Wetlands
-  Chicago River System



PUBLIC HEALTH + WELLNESS

**From the New York Times,
June 13th, 2019**

“... A wealth of research indicates that escaping to a neighborhood park, hiking through the woods, or spending a weekend by the lake can lower a person’s stress levels, decrease blood pressure and reduce the risk of asthma, allergies, diabetes, and cardiovascular disease, while boosting mental health and increasing life expectancy.

Doctors around the world have begun prescribing time in nature as a way of improving their patients’ health...”



WHAT DATA WAS USED TO FORM THE PLA?

LAND CHARACTER
(PARCELS, LAND USE,
PROPERTY OWNERSHIP)

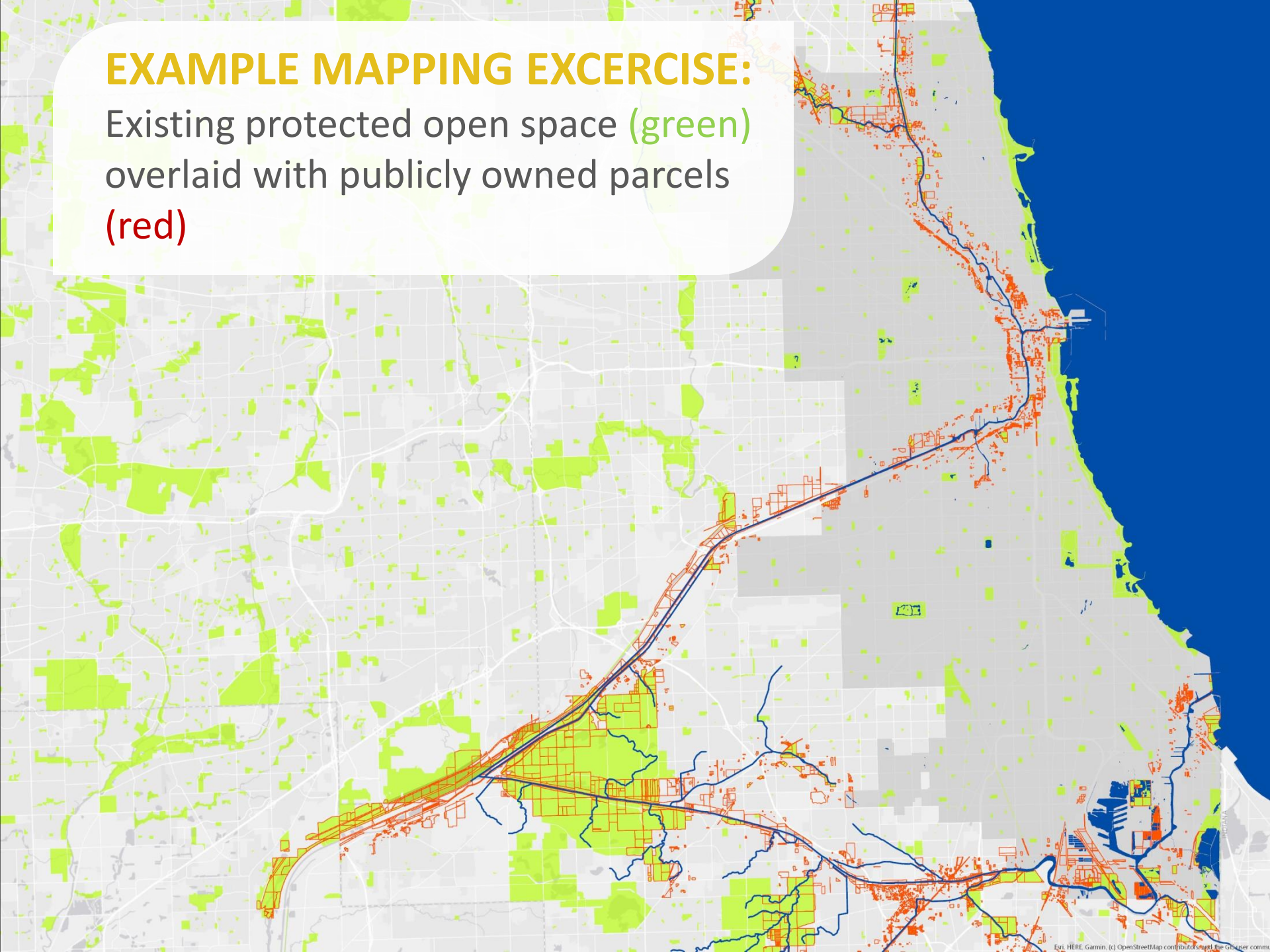
**PUBLIC LAND
ASSESSMENT MAP**

ENVIRONMENT
(FEMA, SOILS, TREE COVER,
SHORELINE TYPE, CHICAGO
WILDERNESS)

RECREATION + ACCESS
(TRAILS, WATERWAY
LAUNCHES, AMENITIES)

EXAMPLE MAPPING EXERCISE:

Existing protected open space (green)
overlaid with publicly owned parcels
(red)



PLA DASHBOARD – PROVIDES RIVER STATISTICS:

CHICAGO RIVER PROJECT

Friends of the Chicago River

ARCADIS Design & Consultancy for natural and built environments

River Branch
All

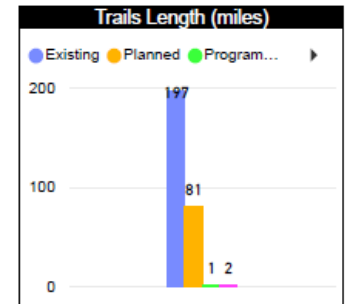
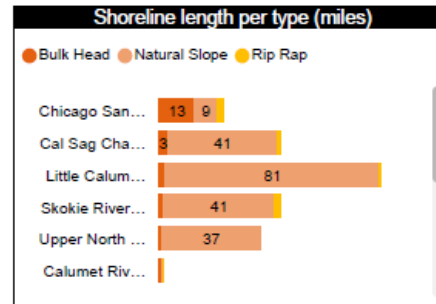
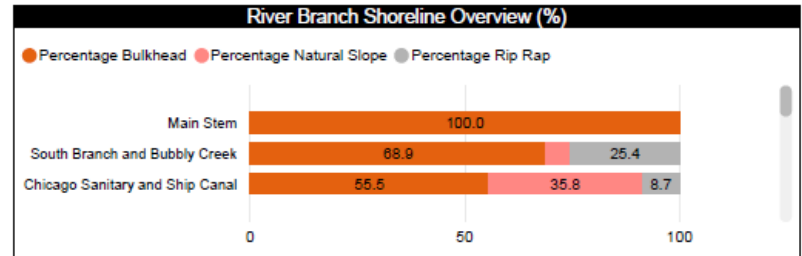
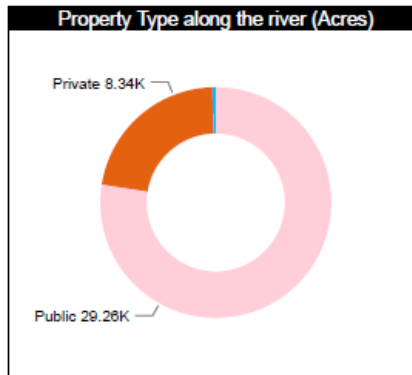
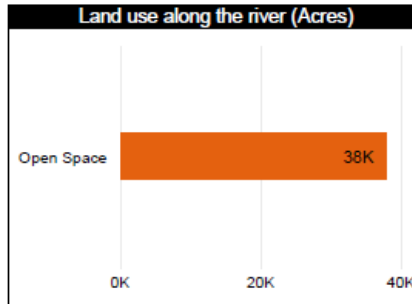
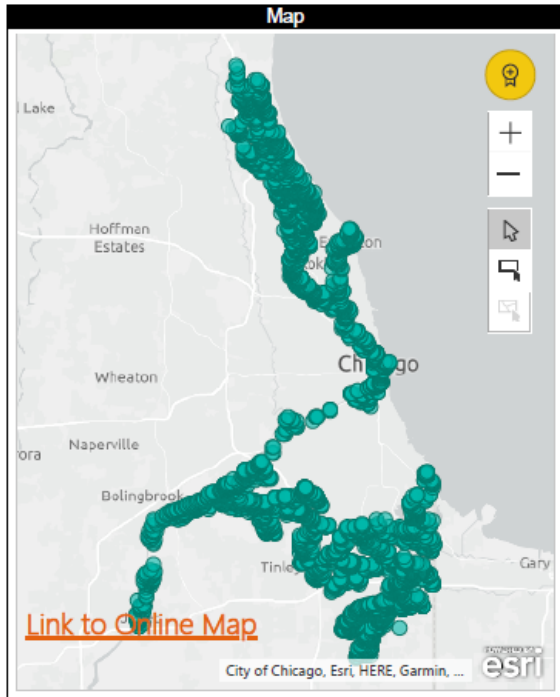
Property Type
All

Shoreline Type
All

Landuse Type
Open Space

Additional Parcel Details

Owner	Pin No.	Type of Soil	Easement	Drainage
04-05-43 LLC	1,608,100,004.00	Unclassified	N/A	N/A
ABACA WILLOW HILLS	2,305,400,003.00	Unclassified	N/A	N/A
ALESSANDRO MELZI & MIHAELA TIGU	1,627,204,005.00	Unclassified	N/A	N/A
ALLEY	2,811,214,043.00	Unclassified	N/A	N/A
ALLEY	2,811,214,044.00	Unclassified	N/A	N/A



Parcel Area (Acres)
37,778.87

Total Shoreline Length (miles)
297.74

Existing Trail Length (miles)
196.82

Planned Trail Length (miles)
80.81

Programmed Trail Length (miles)
1.35

Unknown Trail Length (miles)
1.80

PLA DASHBOARD EXAMPLE RIVER STATISTICS:

48% of the 536 miles of shoreline is publicly owned

75% of the 536 miles of shoreline has a natural edge

Over 37,000 acres of open space are located within a 1/2 mile of the Chicago River system

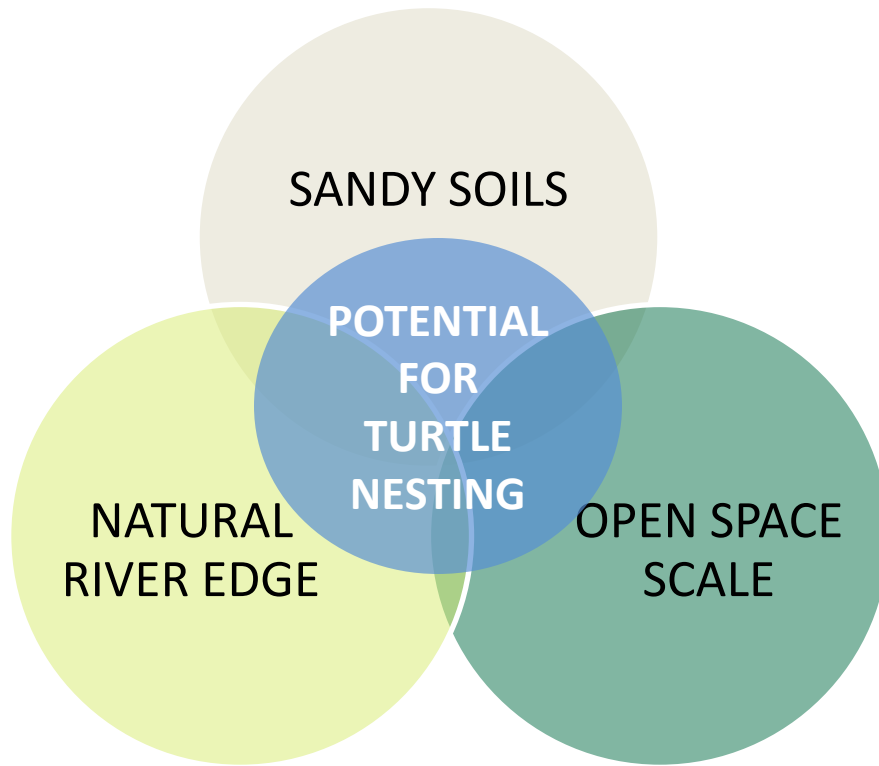
76% of which is public land

140 miles of this public property has a natural river edge



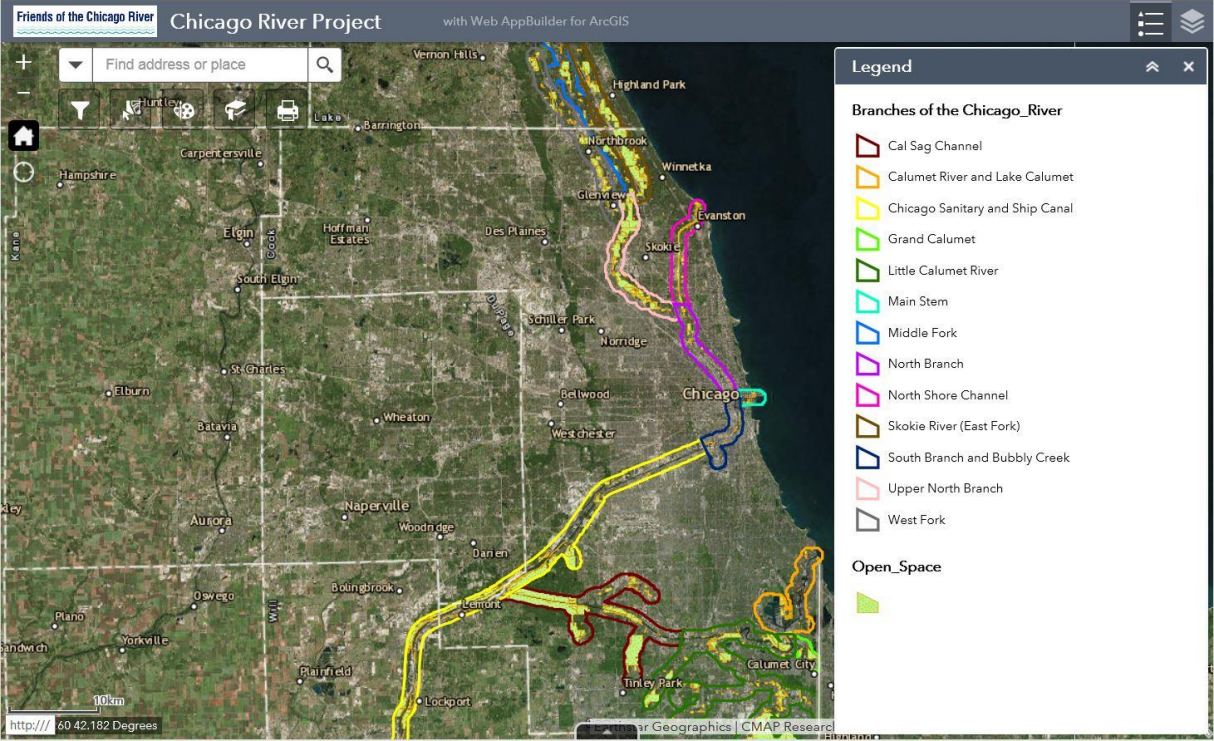
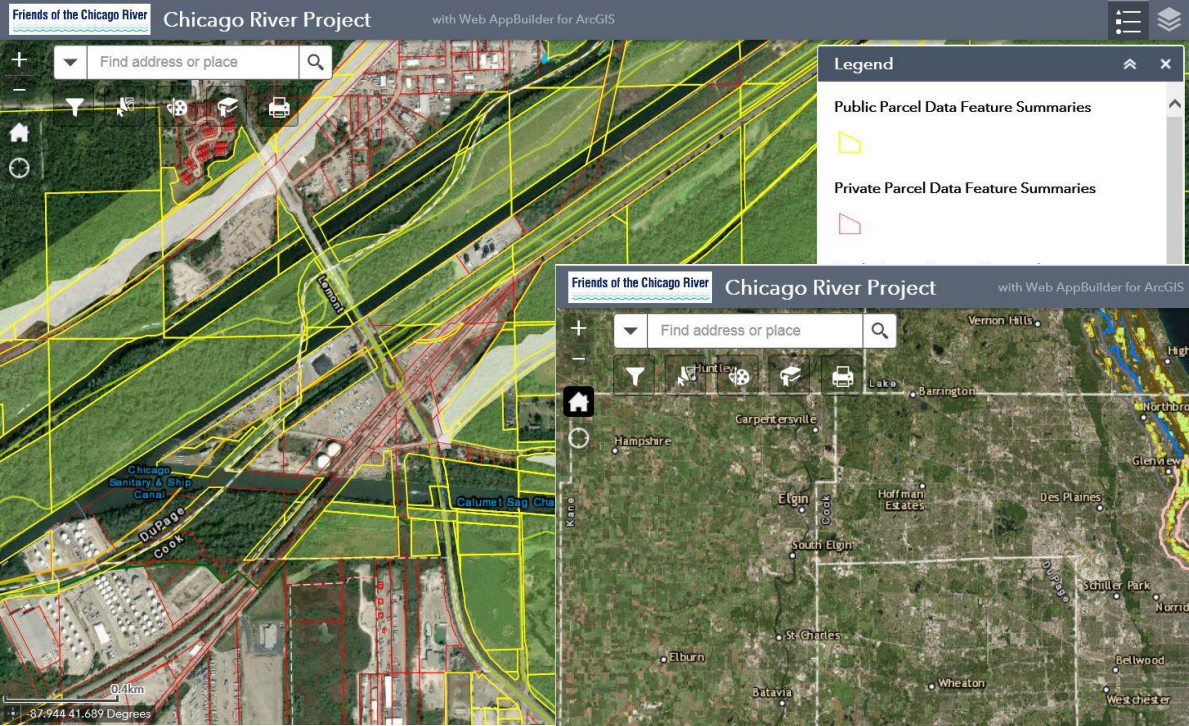
EXAMPLE ON THE GROUND PROJECT BASED ON PLA:

MAPPING CRITICAL UN- PROTECTED HABITAT



PATNERSHIPS - WE WANT TO WORK WITH YOU!

COMING SOON to *chicagoriver.org*



QUESTIONS?

Friends of the Chicago River

411 South Wells Street, Suite 800 • Chicago, Illinois 60607
tel 312.939.0490 • fax 312.939.0931 • www.chicagoriver.org