

#7 Midway

This large submarket south of the Stevenson Expressway includes Midway Airport. The major concentration of retail is along Cicero Avenue from 63rd to 87th Street and includes the 1.2-million square foot Ford City Mall. The retail developments located on the west side of Cicero Avenue are in the municipalities of Bedford Park and Burbank. Additional shopping centers are located along Archer, Kedzie, and Western Avenues and Pulaski Road.

Demographics

	2000	2010	2012*
Population	233,742	238,263	240,125
Households	72,320	68,747	68,644
Median HH Income*			\$45,680

Median Age	31.0
1 Person Households	13,845 20.1%
All Households with Children	32,891 47.8%
All Households 65+	13,112 19.1%

Square Miles	21.1
Population Density per Square Mile	11,380
SF of Land in Parcels Zoned B, C, D & BPD	39.7M
SF of Ground Floor Area Zoned B, C, D & BPD	13.1M
Total Employment	43,687

Source: US Census Bureau, Esri, Dun & Bradstreet *2012 Estimate

Submarket Inventory

Shopping Centers

3 community centers with more than 125,000 SF:
Ford City, Scottsdale Center, Steeple Center

10 neighborhood centers with 30,000 to 125,000 SF:
Pulaski Center, 5829 Archer, 7050 South Pulaski, The Annex, Midway Square, Courtesy Plaza, Ford City East, Garfield Ridge Commons, Archer-Central Plaza, Park Shops

Big Box Retailers

1 Carson's
2 Kmart
1 Lowe's

1 Sears
1 Target

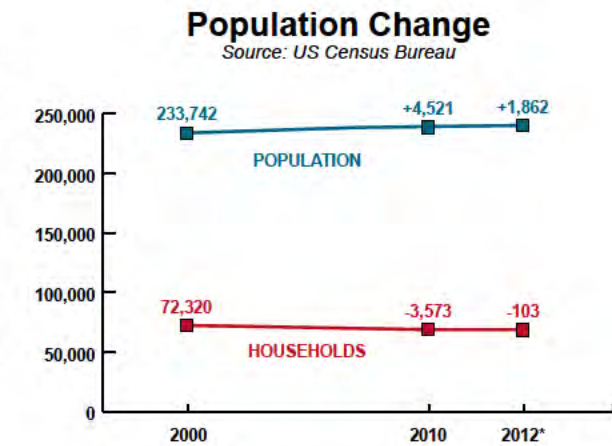
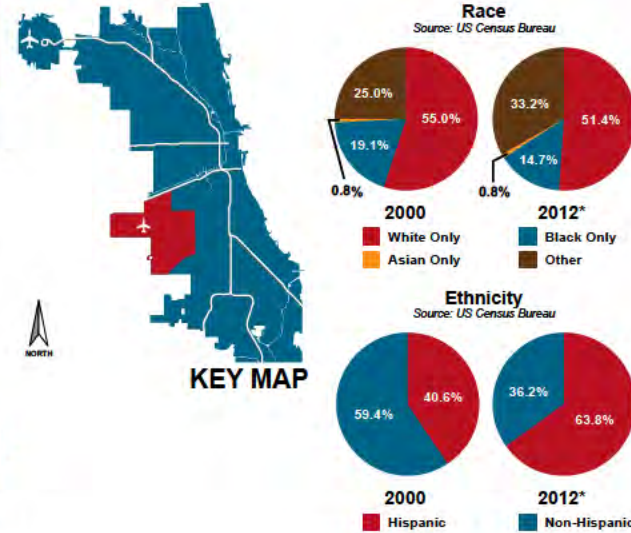
Grocery Stores

5 ALDI
1 Cermak Fresh Market
2 Jewel-Osco

3 Pete's Fresh Market
2 Save-a-Lot
1 Shop & Save

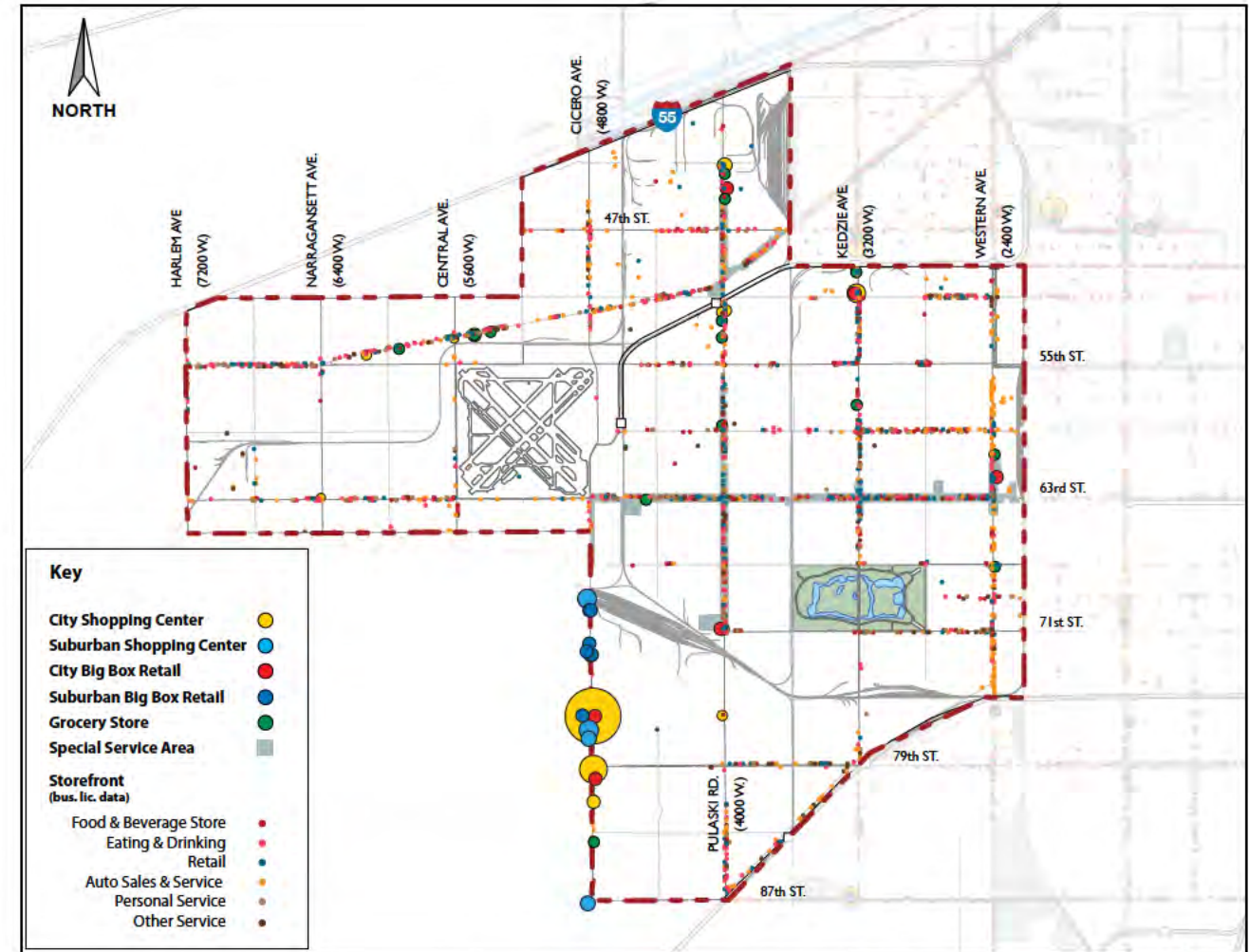
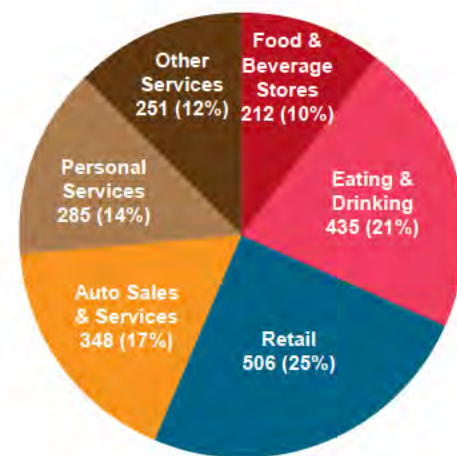
Special Service Areas

63rd Street #3
Marquette Park #14
Brighton/Archer #39



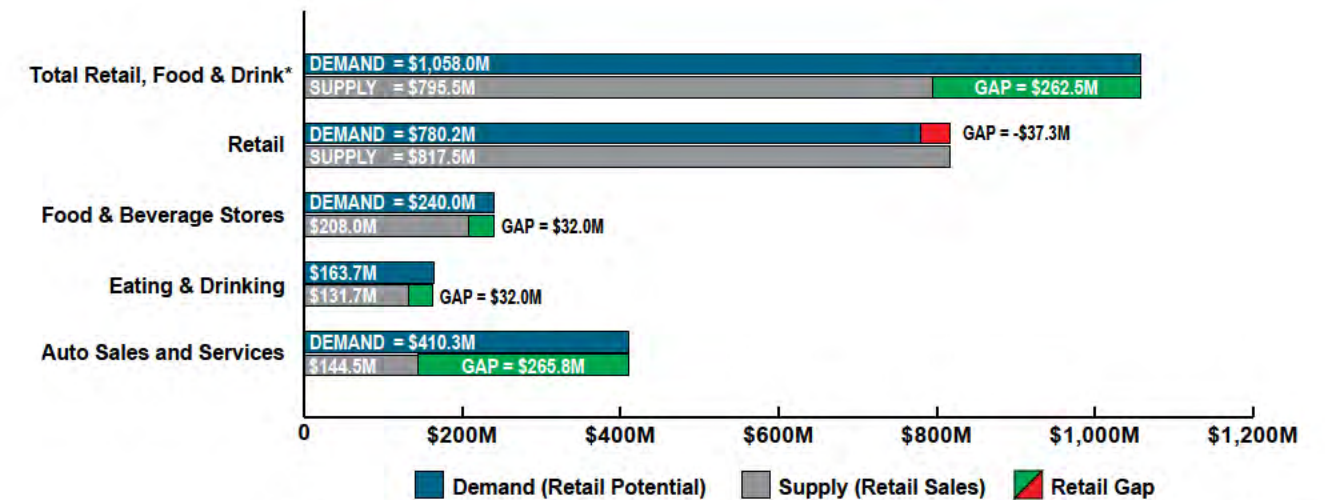
Submarket Business Licenses

Source: City of Chicago



Submarket Inventory Map

Submarket Gap Analysis



*Excludes Non-store Retailers and Auto Sales and Services

Source: Esri Business Analyst