

#16 Greater Lincoln Park

Located between Division Street and Irving Park Road, east of the Kennedy Expressway (I-94), this submarket has an abundant and growing inventory of shopping centers, free-standing retail stores, and commercial districts. In particular, the retail concentrations near North and Clybourn, and those extending along Clybourn and Elston Avenues continue to expand, drawing patrons from throughout the City's North Side. Other retail concentrations are located closer to the Lakefront along Clark Street and Broadway.

Demographics

	2000	2010	2012*
Population	179,434	177,803	180,853
Households	105,183	100,180	101,186
Median HH Income*			\$73,060

Median Age	30.9
1 Person Households	52,648 52.6%
All Households with Children	11,057 11.0%
All Households 65+	11,340 11.3%

Square Miles	7.7
Population Density per Square Mile	23,487
SF of Land in Parcels Zoned B, C, D & BPD	26.3M
SF of Ground Floor Area Zoned B, C, D & BPD	14.5M
Total Employment	66,655

Source: US Census Bureau, Esri, Dun & Bradstreet *2012 Estimate

Submarket Inventory

Shopping Centers

Community center with more than 125,000 SF:
13 centers totaling more than 2.3M SF

Neighborhood center with 30,000 to 125,000 SF:
31 centers totaling more than 1.7M SF

Big Box Retailers

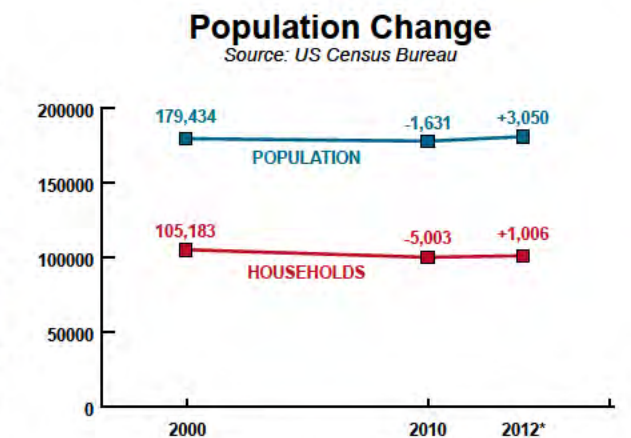
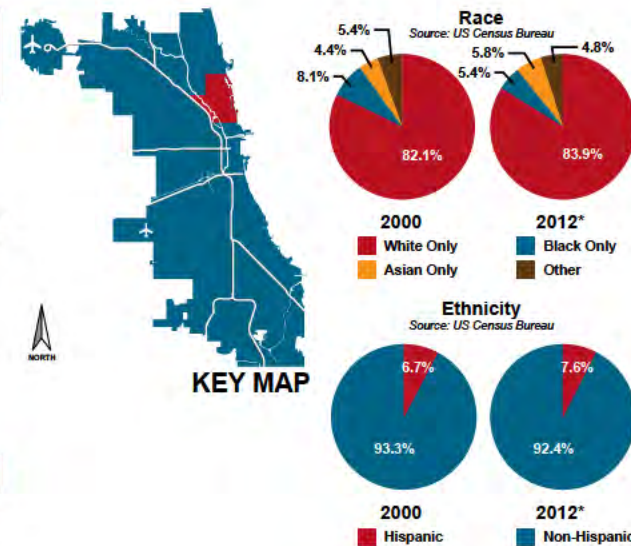
- | | |
|--------------|-----------|
| 1 Costco | 1 Menards |
| 3 Home Depot | 2 Target |
| 1 Kohl's | 2 Walmart |

Grocery Stores

- | | |
|------------------|--------------------|
| 2 ALDI | 1 Strack & Van Til |
| 3 Dominick's | 2 Trader Joe's |
| 4 Jewel-Osco | 3 Treasure Island |
| 1 Potash Markets | 3 Whole Foods |

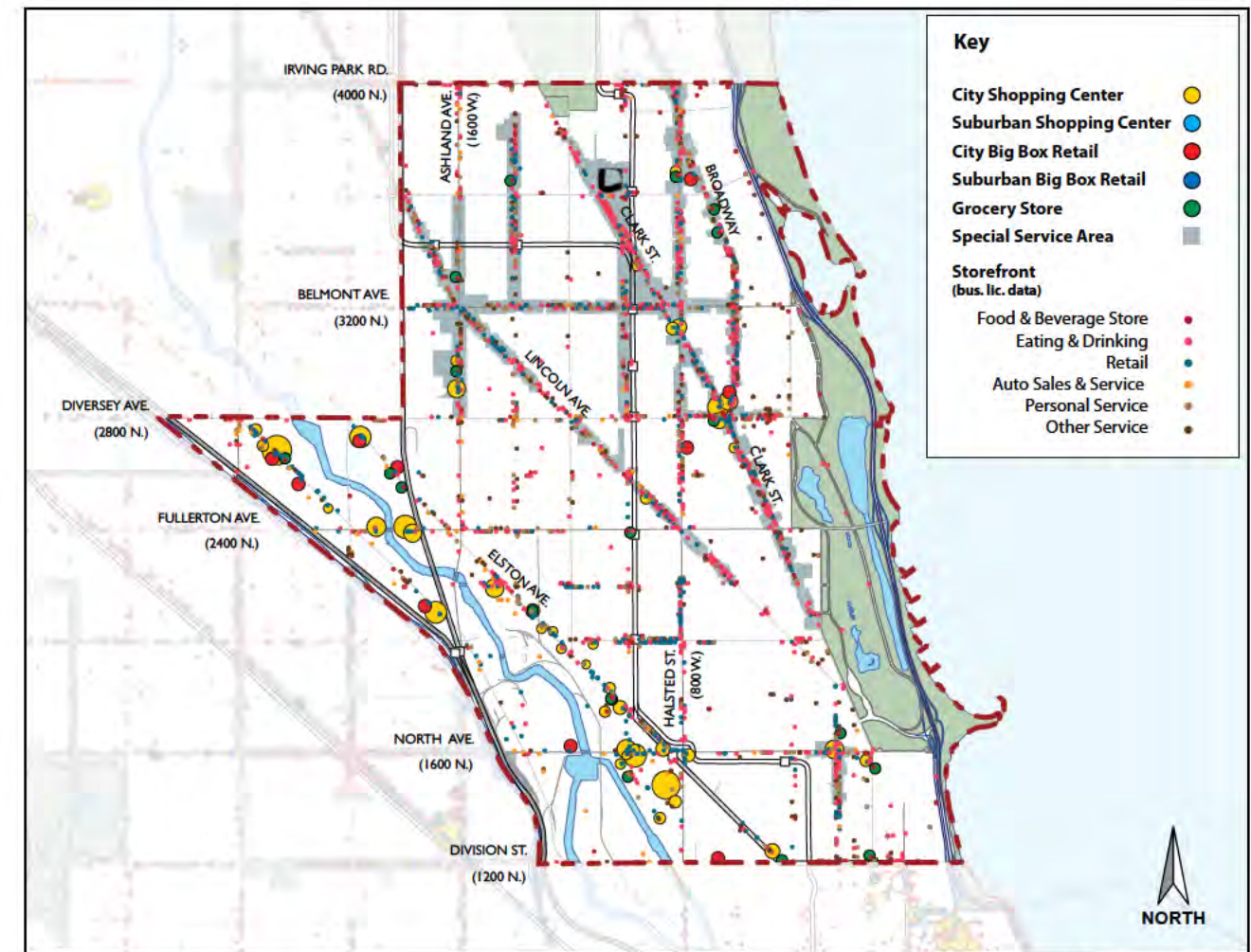
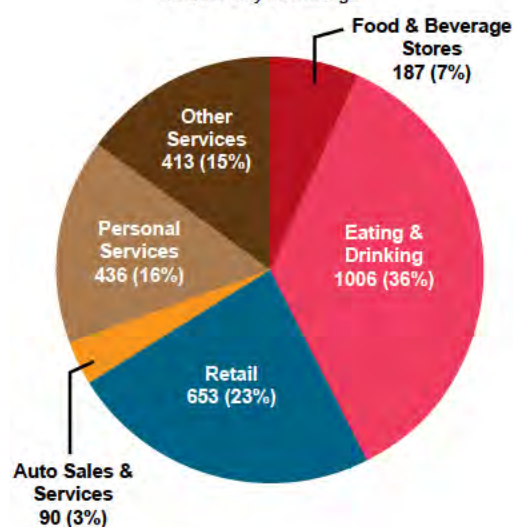
Special Service Areas

- | | |
|-------------------------------|--------------------|
| Greater Lakeview East #8 | Lakeview #27 |
| Central Lakeview #17 | Lincoln Avenue #35 |
| North Halsted #18 | Old Town #48 |
| Lincoln Park/Clark Street #23 | |



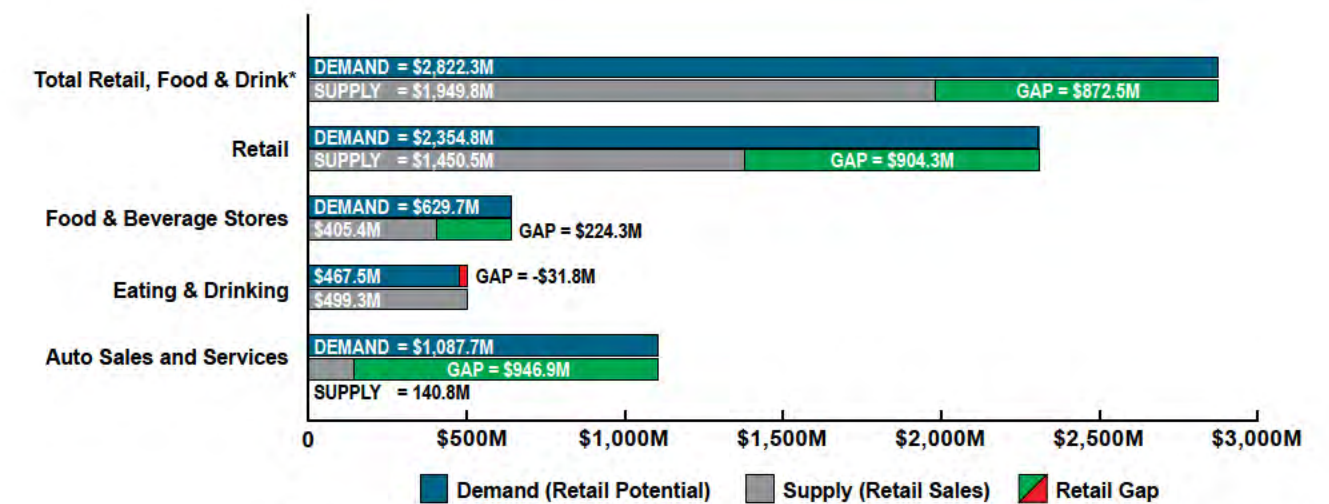
Submarket Business Licenses

Source: City of Chicago



Submarket Inventory Map

Submarket Gap Analysis



*Excludes Non-store Retailers and Auto Sales and Services

Source: Esri Business Analyst