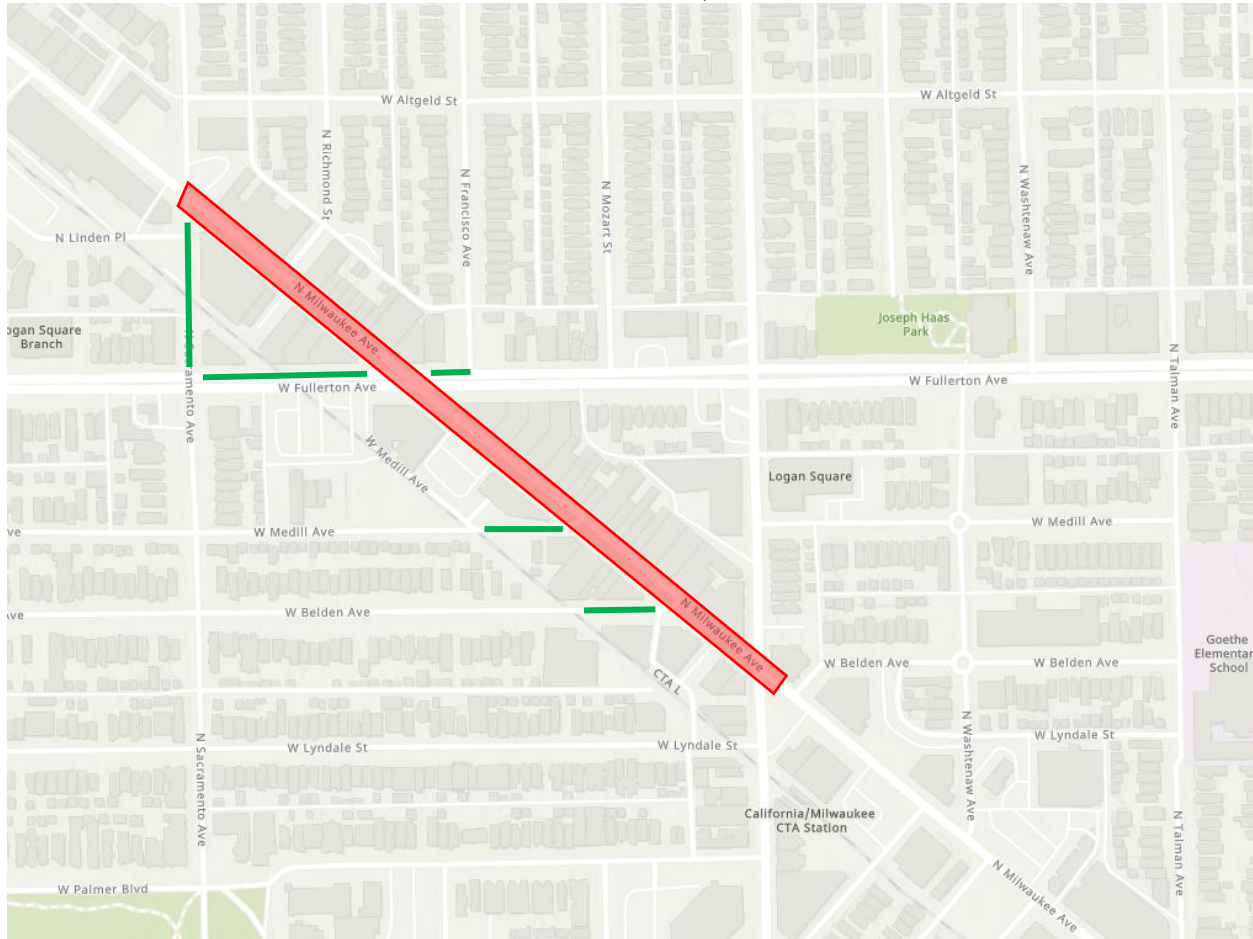




2025 1st Ward Entertainment District Transportation Restrictions
TNP, Taxi, Charter, and Livery NO Drop-off or Pick-up Zones
Fridays & Saturdays (7:00pm – 4:00am CDT)
Effective June 26, 2025



The Office of Emergency Management and Communications (OEMC), in conjunction with the Chicago Police Department (CPD), requires the following to ensure public safety on Fridays and Saturdays, 7:00pm to 4:00am:

- **Taxis, TNPs, Charters, and liveries cannot pick-up or drop-off passengers within the geofence boundaries highlighted in Red (except WAV with ADA passengers).**
 - Boundaries are N Milwaukee Ave from N California Ave to N Sacramento Ave.
- **Taxis, TNPs, and liveries must utilize the drop-off and pick-up points shown on the map in Green:**
 - N Sacramento Ave from N Milwaukee Ave to W Fullerton Ave.
 - North side of W Fullerton Ave from N Milwaukee Ave to N Francisco Ave.
 - North Side of W Fullerton Ave from N Milwaukee Ave to N Sacramento Ave.
 - W Medill Ave, west of N Milwaukee Ave.
 - W Belden Ave, west of N Milwaukee Ave.
- No vehicles stopping, standing, or parking in bus or bicycle lanes, active traffic lanes, intersections, fire lanes, sidewalk crossings, turning lanes, etc. (Strictly enforced)

OEMC traffic management directives and maps are subject to change by law enforcement authorities based on real-time conditions for the preservation of order and public safety.