

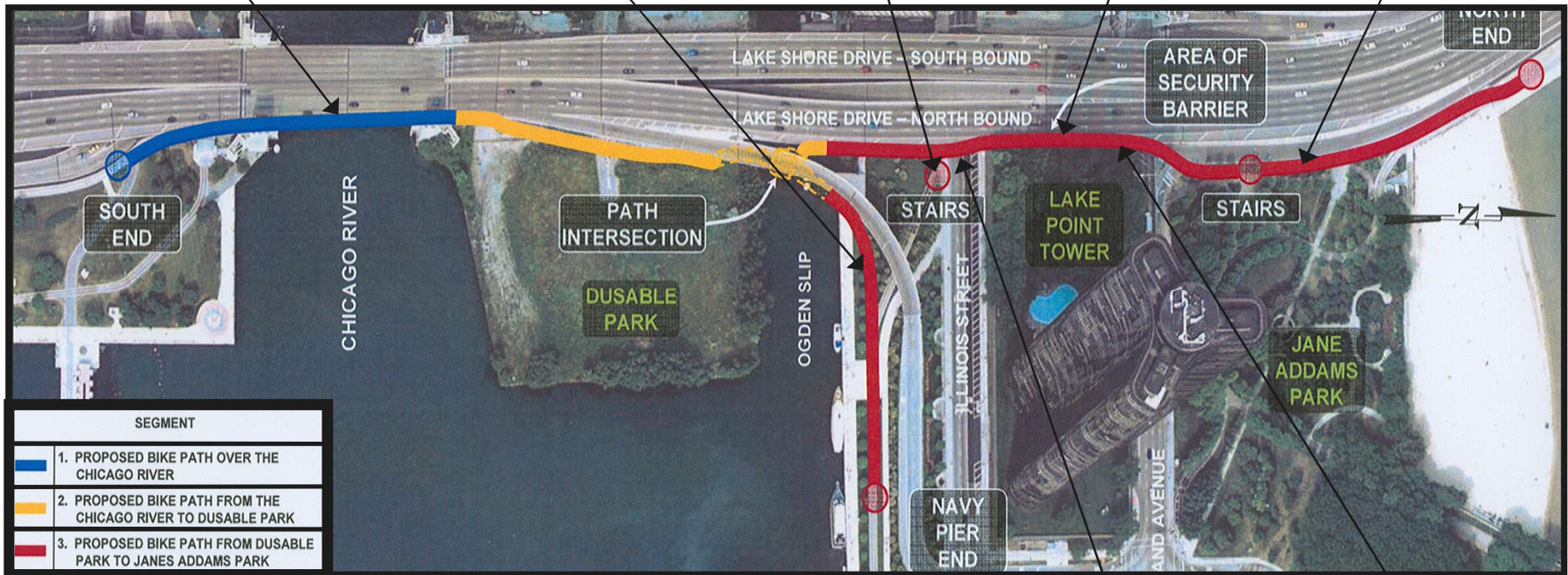
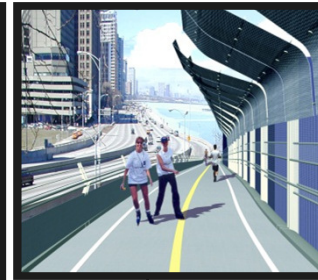


Navy Pier Flyover - Lakefront Trail Improvements

From Jane Addams Park to the Chicago River

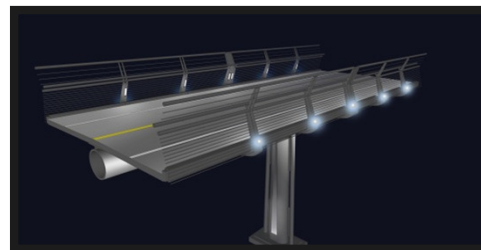
RAHM EMANUEL, MAYOR

THE CITY OF CHICAGO • DEPARTMENT OF TRANSPORTATION • DIVISION OF PROJECT DEVELOPMENT

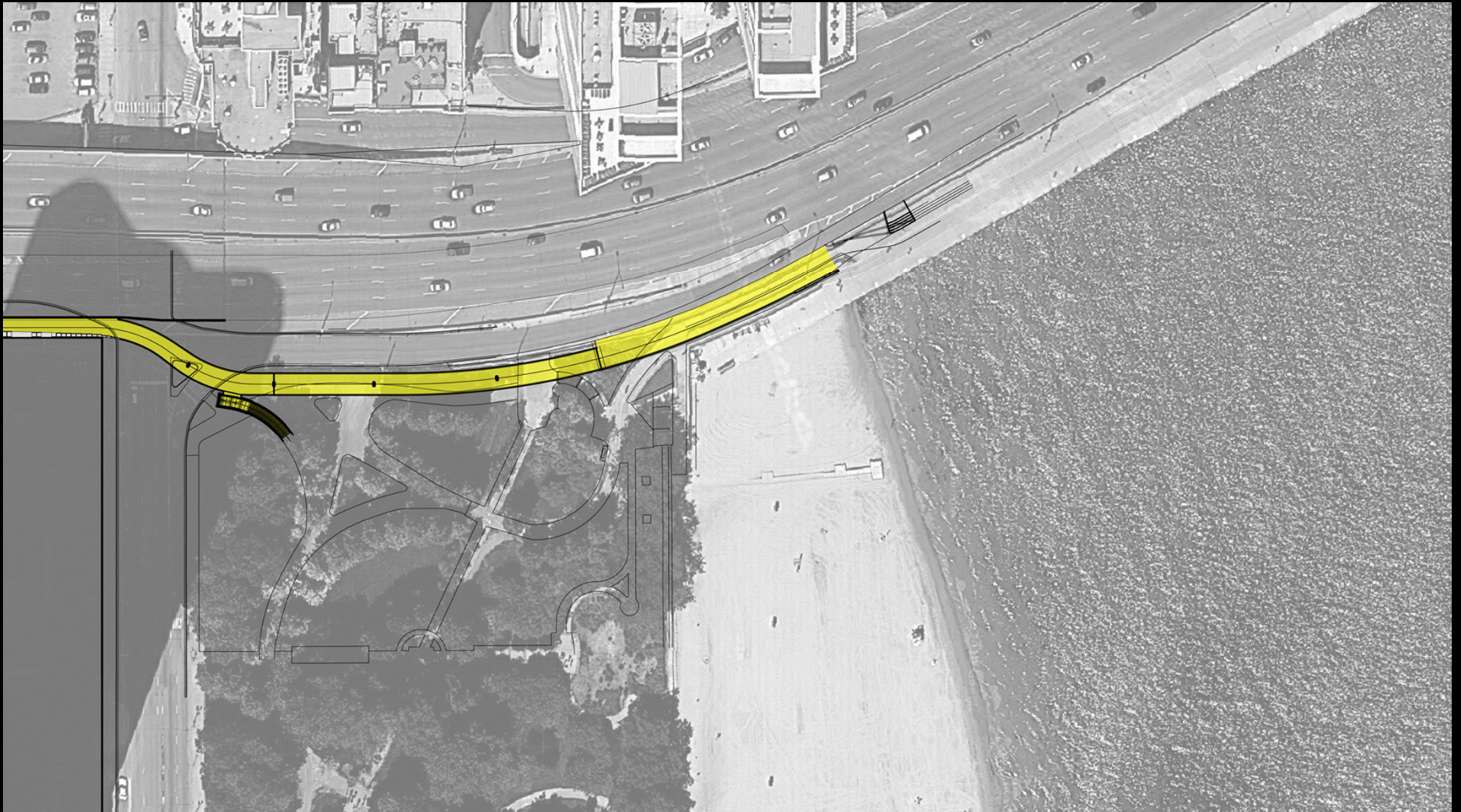


Detail of column and deck lighting

NAVY PIER FLYOVER - LAKEFRONT TRAIL IMPROVEMENT



Segment 3
Lakefront Trail from
Ogden Slip to
Jane Addams Park

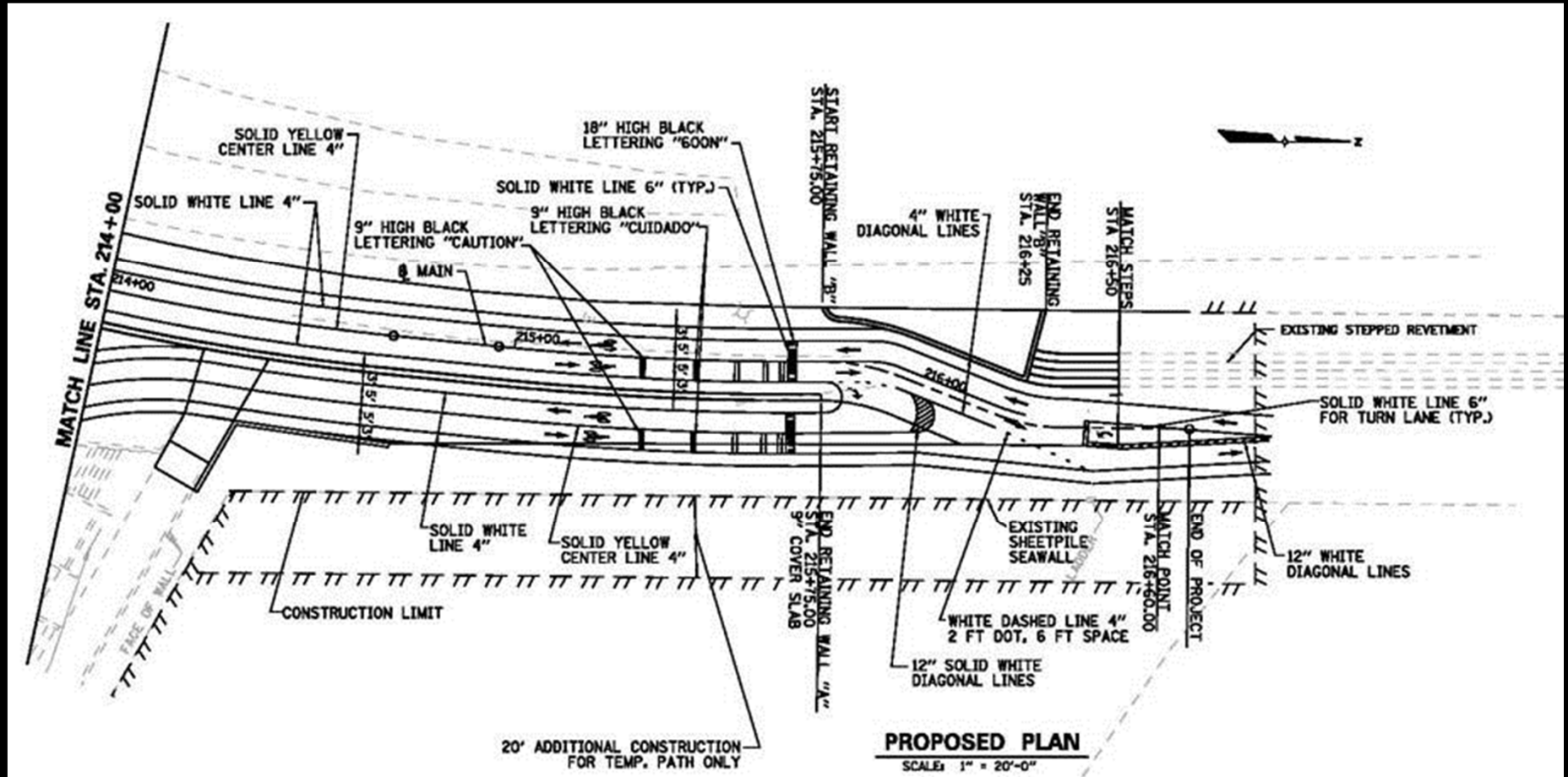


NORTH 

RAHM EMANUEL, MAYOR

THE CITY OF CHICAGO • DEPARTMENT OF TRANSPORTATION • DIVISION OF PROJECT DEVELOPMENT

North End Plan
Lakefront Trail Improvement



RAHM EMANUEL, MAYOR

THE CITY OF CHICAGO • DEPARTMENT OF TRANSPORTATION • DIVISION OF PROJECT DEVELOPMENT

Pavement Marking Plan:
Northern Touch-down
Lakefront Trail Improvement



RAHM EMANUEL, MAYOR

THE CITY OF CHICAGO • DEPARTMENT OF TRANSPORTATION • DIVISION OF PROJECT DEVELOPMENT

View in Jane Addams Park
Under Bridge
Lakefront Trail Improvement

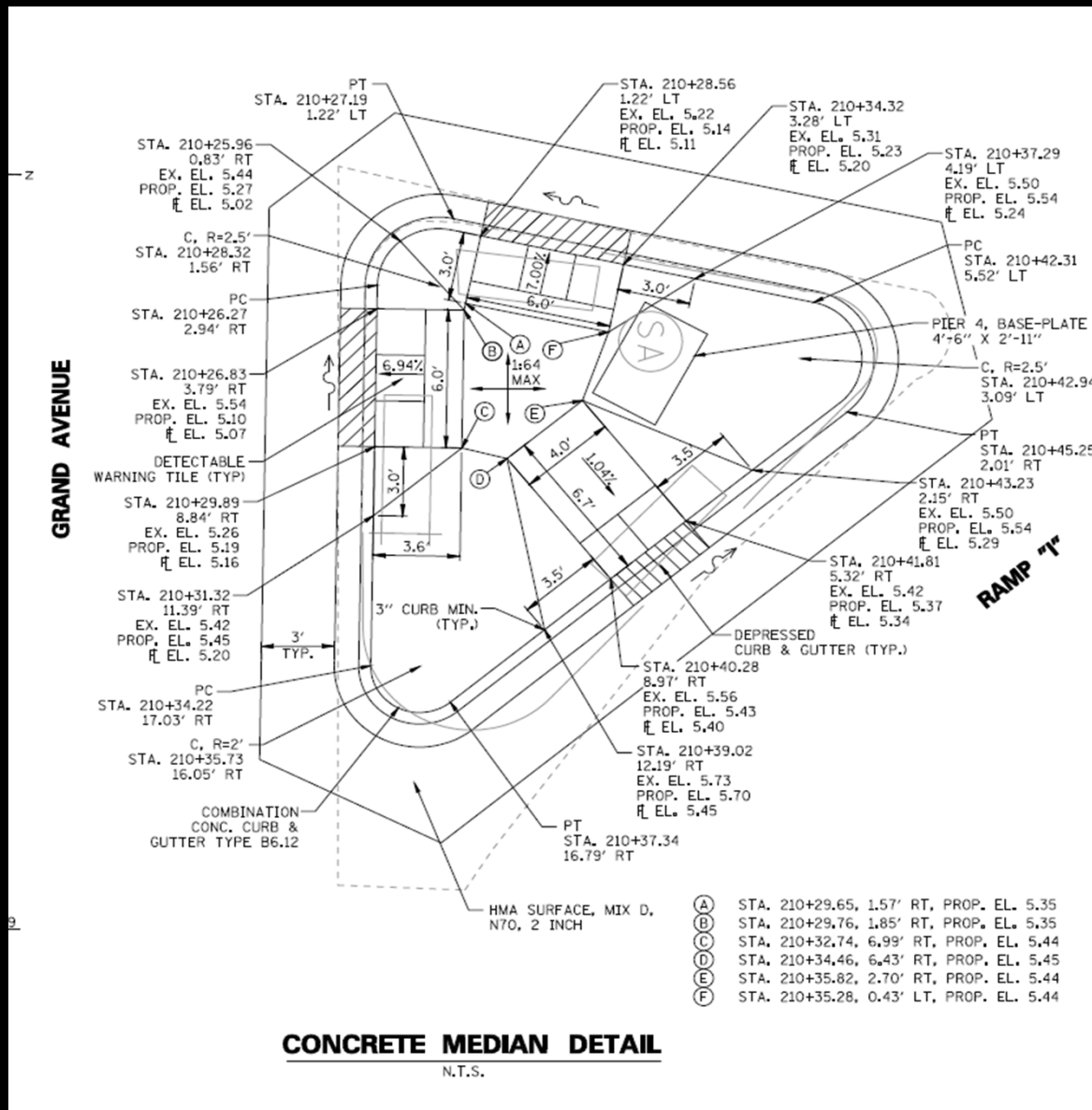


RAHM EMANUEL, MAYOR

THE CITY OF CHICAGO • DEPARTMENT OF TRANSPORTATION • DIVISION OF PROJECT DEVELOPMENT

Lakefront Trail Flyover
At Grand Ave.

Lakefront Trail Improvement



RAHM EMANUEL, MAYOR

THE CITY OF CHICAGO • DEPARTMENT OF TRANSPORTATION • DIVISION OF PROJECT DEVELOPMENT

ADA Detail At Grand Ave.

Lakefront Trail Improvement



RAHM EMANUEL, MAYOR

THE CITY OF CHICAGO • DEPARTMENT OF TRANSPORTATION • DIVISION OF PROJECT DEVELOPMENT

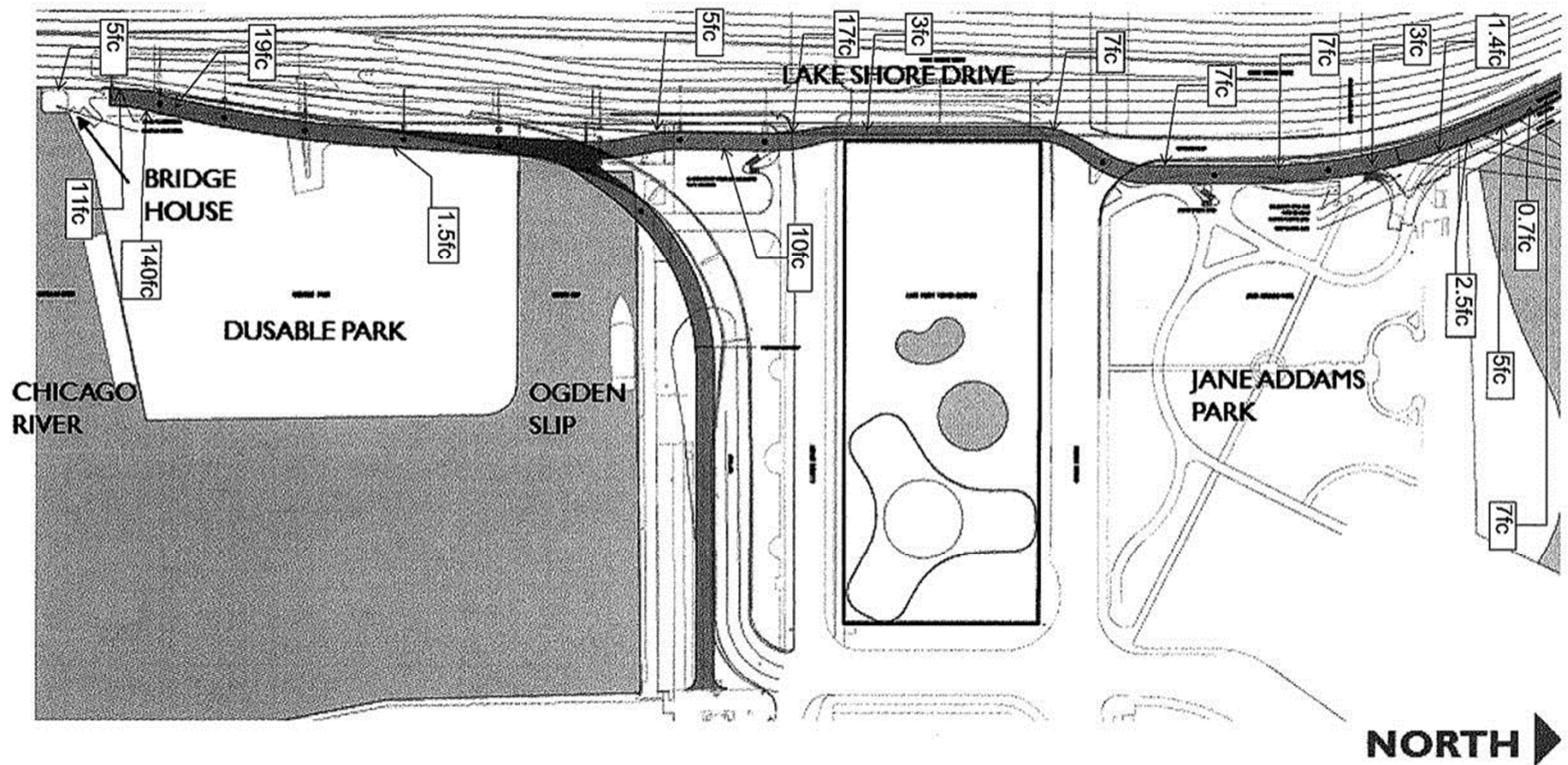
Existing Conditions
Grand Crossing
Lakefront Trail Improvement



RAHM EMANUEL, MAYOR

THE CITY OF CHICAGO • DEPARTMENT OF TRANSPORTATION • DIVISION OF PROJECT DEVELOPMENT

Typical Structure View from Below
Lakefront Trail Improvement

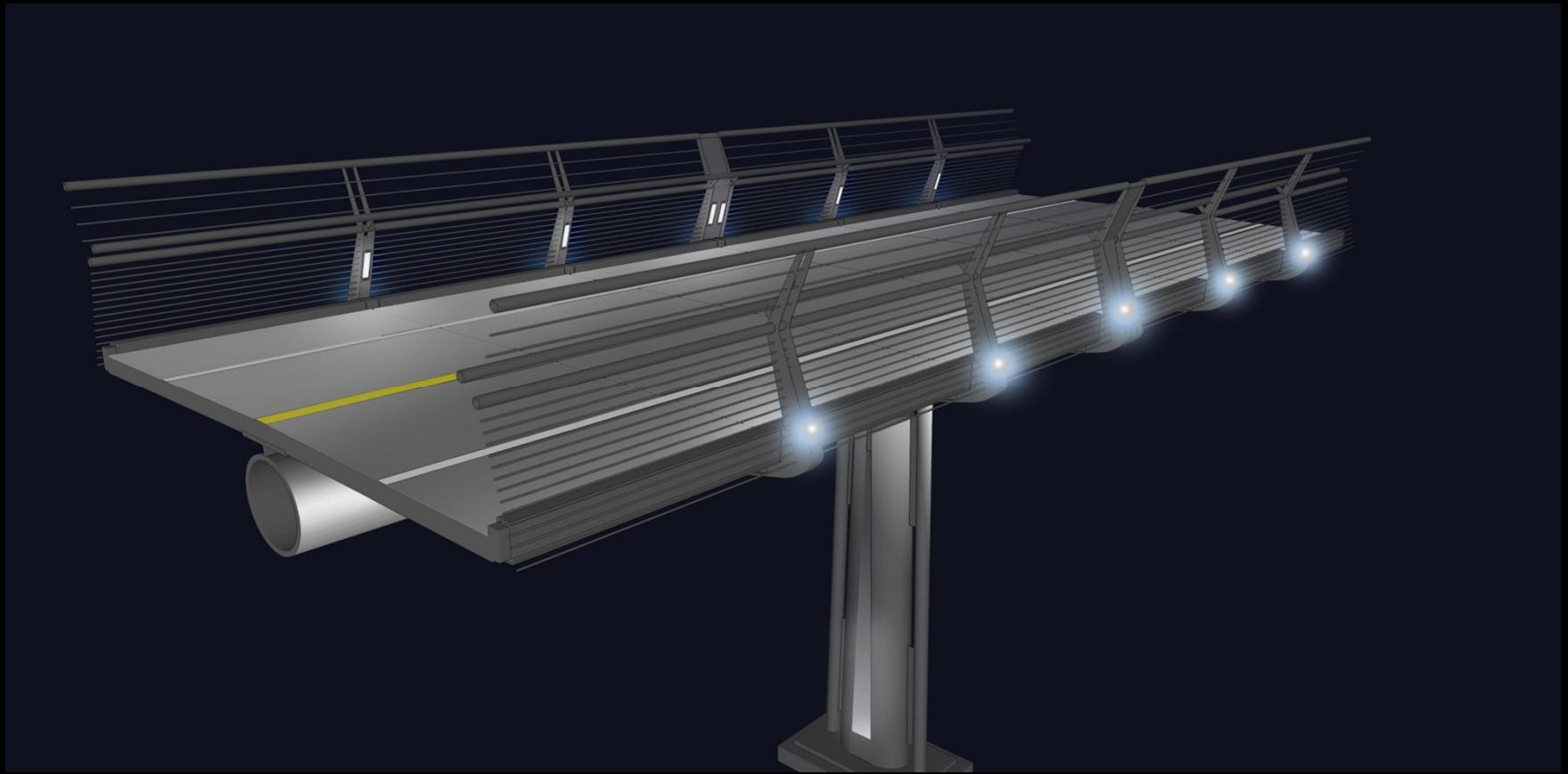


RAHM EMANUEL, MAYOR

THE CITY OF CHICAGO • DEPARTMENT OF TRANSPORTATION • DIVISION OF PROJECT DEVELOPMENT

Photometrics along the Path

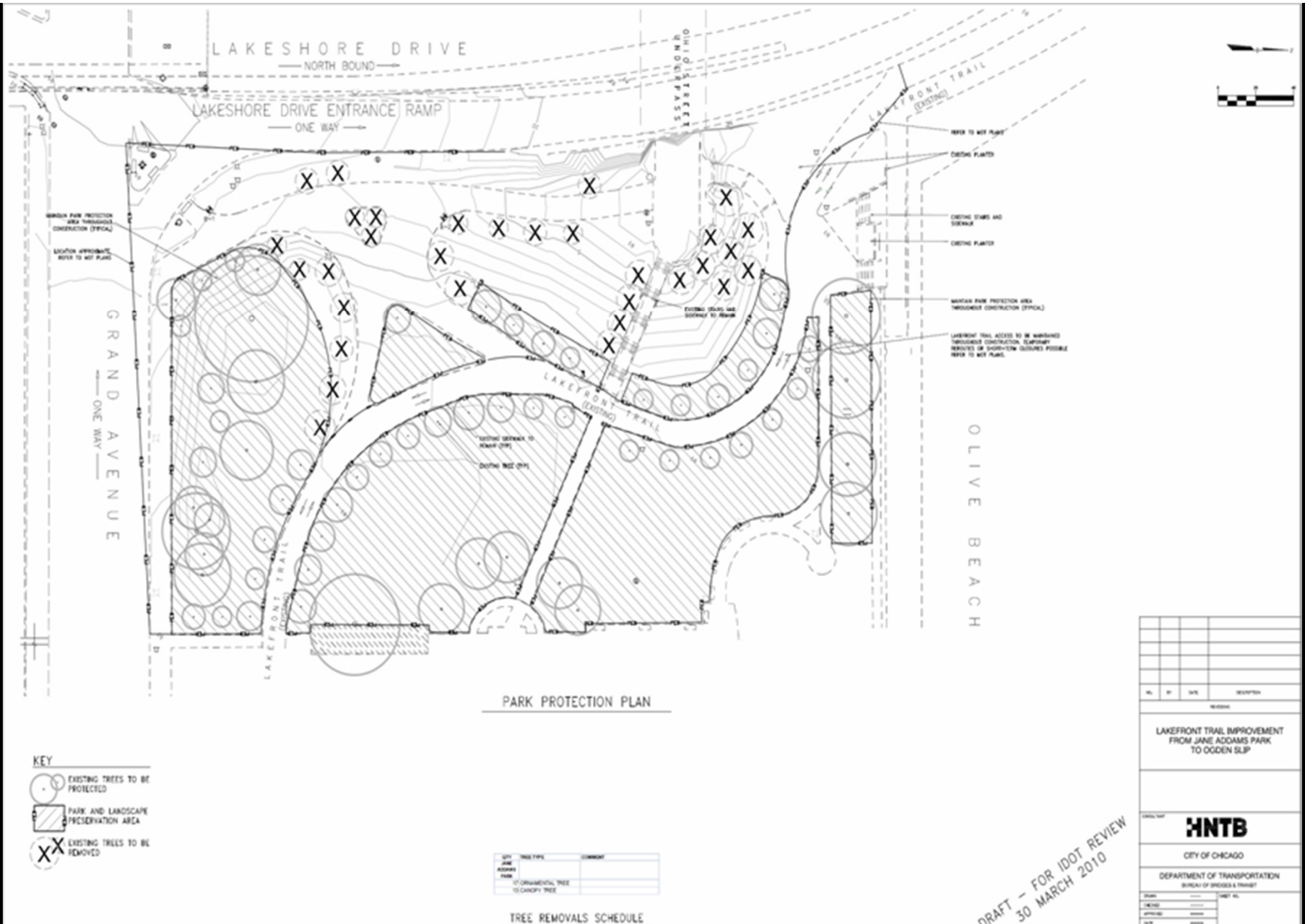
Lakefront Trail Improvement



RAHM EMANUEL, MAYOR

THE CITY OF CHICAGO • DEPARTMENT OF TRANSPORTATION • DIVISION OF PROJECT DEVELOPMENT

Typical Structure View on Deck
Lakefront Trail Improvement



RAHM EMANUEL, MAYOR

THE CITY OF CHICAGO • DEPARTMENT OF TRANSPORTATION • DIVISION OF PROJECT DEVELOPMENT

Jane Addams Park
Protection Plan
Lakefront Trail Improvement



KEY

-  PROPOSED TREES
-  PROPOSED SHRUBS
-  EXISTING TREES TO REMAIN
-  PROPOSED SIDEWALK
-  PROPOSED PERVIOUS PAVERS
-  PROPOSED PLANTER SOIL

[illegible]

PLANT SCHEDULE

NO.	ST	DATE	RECEPTION		
ADDRESS					
LAKEFRONT TRAIL IMPROVEMENT FROM JANE ADDAMS PARK TO OGDEN SLIP					
PROPOSED LANDSCAPE PLAN					
JAKE ADAMS PARK AND OUGLIS BLVD					
					
CITY OF CHICAGO					
DEPARTMENT OF TRANSPORTATION BUREAU OF BRIDGES & TUNNELS					
DRAWN	BY	CHECKED	DATE		
SCALE					

DRAFT - FOR IDOT REVIEW
30 MARCH 2010

Jane Addams Park Plan

Lakefront Trail Improvement

JUNE 17, 2010

LEGEND



GYMNOCLADUS DIOICA
'PRAIRIE TITAN'



MALUS 'DREAM PINK'



ROSA RUGOSA 'NEARLY WILD'



HYDRANGEA QUERCIFOLIA 'PEE WEE'

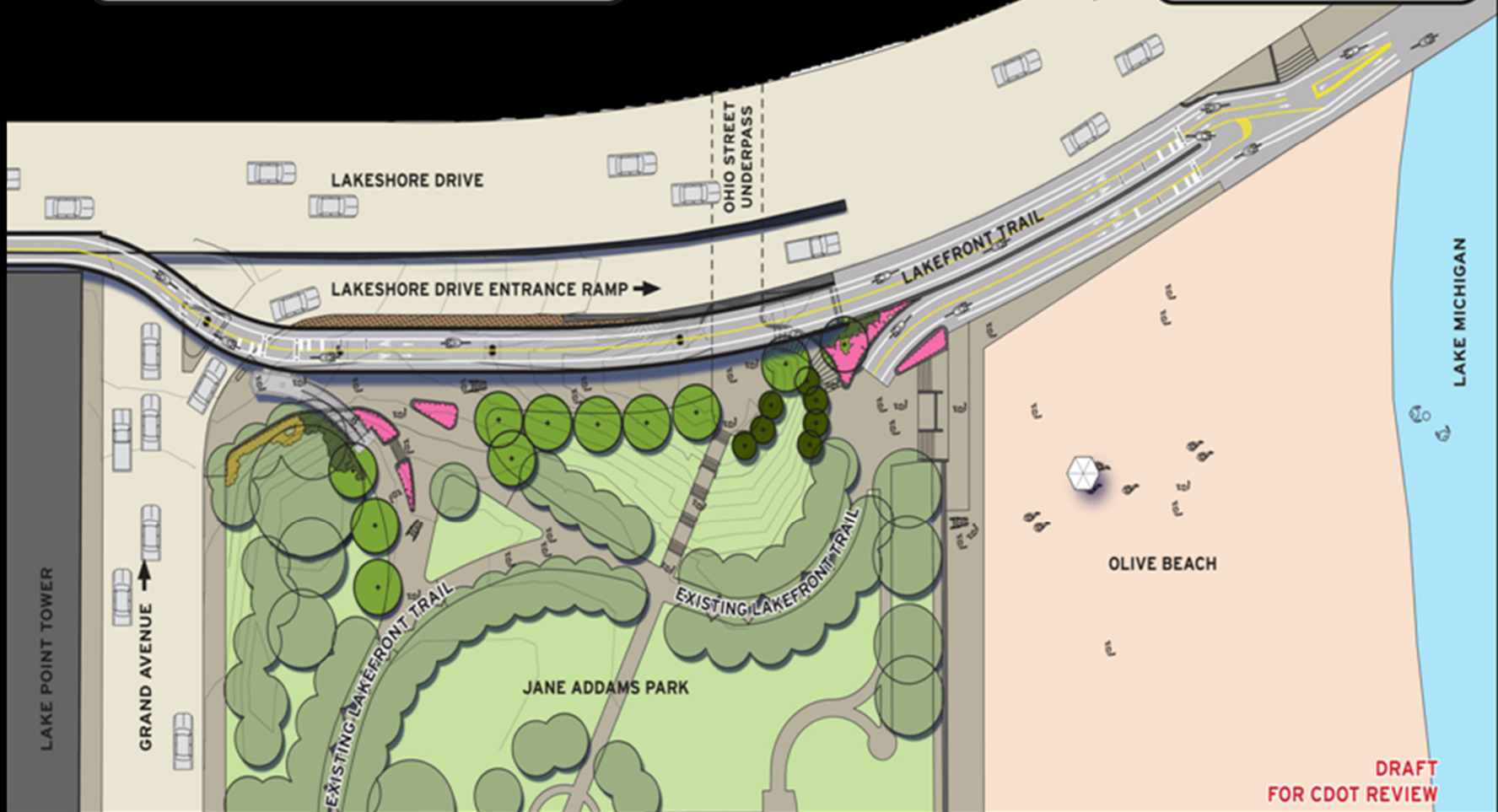


VIBURNUM CALESII X MACROCEPHALUM
'CAYUGA' & HYDRANGEA PANICULATA
'DHARUMA'

LAKEFRONT TRAIL
JANE ADDAMS PARK AND
OLIVE BEACH
OPTION 1

1"=50'

0 25 50 100



RAHM EMANUEL, MAYOR

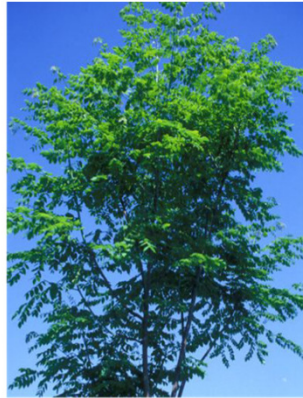
THE CITY OF CHICAGO • DEPARTMENT OF TRANSPORTATION • DIVISION OF PROJECT DEVELOPMENT

Jane Addams Park Plan
Lakefront Trail Improvement

SHADE AND ORNAMENTAL TREES



LARIX DECIDUA



GYMNOCLADUS DIOICA
'PRAIRIE TITAN'



SYRINGA PEKINENSIS
'CHINA SNOW'



MALUS 'DREAM PINK'

SHRUBS AND ORNAMENTAL GRASS



ROSA RUGOSA 'NEARLY WILD'



HYDRANGEA QUERCIFOLIA 'PEE WEE'



HYDRANGEA PANICULATA
'DHARUMA'



VIBURNUM CADESII X
MACROCEPHALUM 'CAYUGA'



SPIRAEA X CINEREA 'GREFSHEIM'



SCHIZACHYRIUM SCOPARIUM



SPOROBOLUS HETEROLEPIS

Landscape: Proposed Plants – Jane Addams Park and Olive Beach

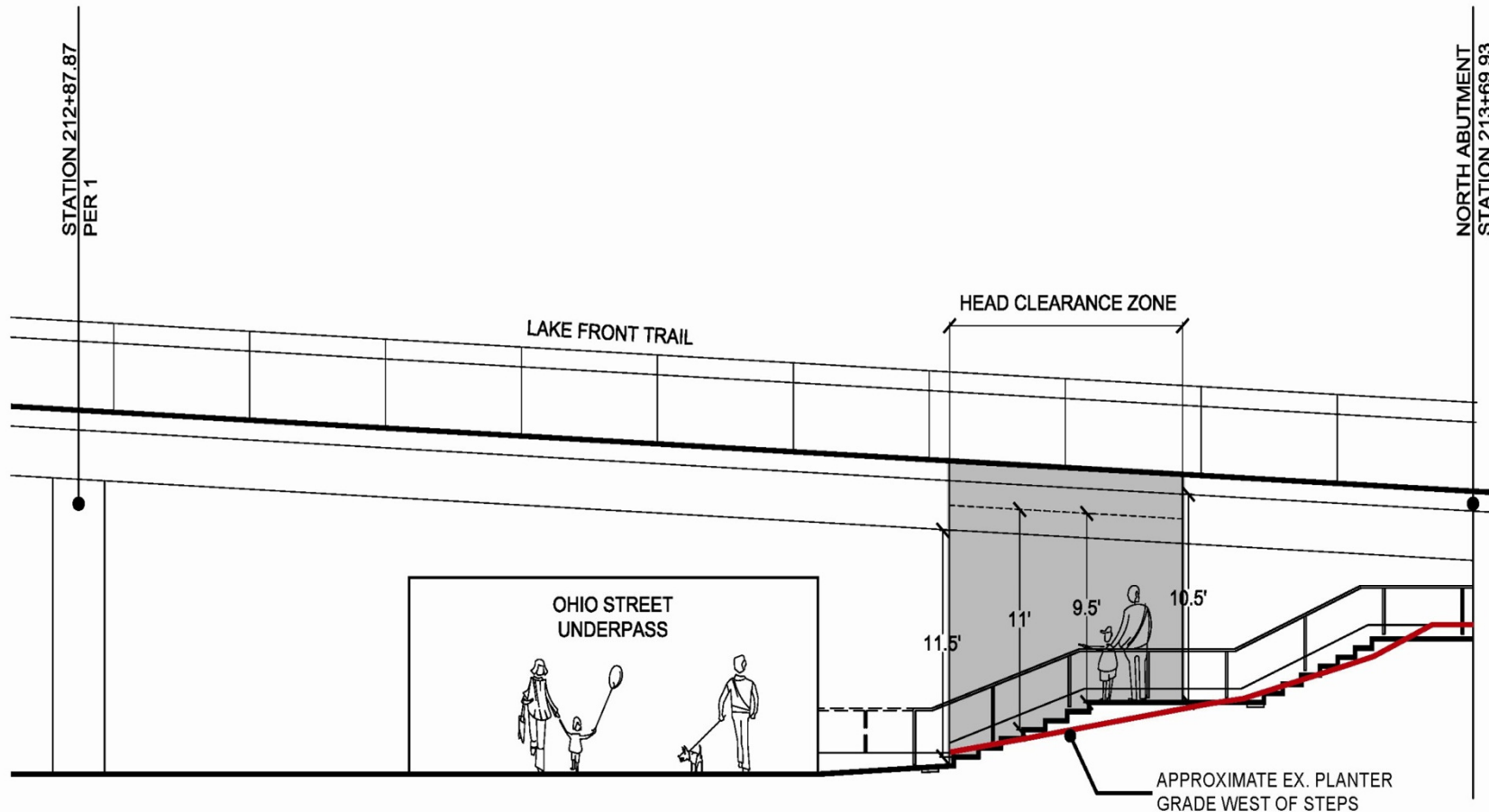


APPROXIMATE HEAD CLEARANCE HEIGHTS -
EX. STAIR IMAGERY - LSK B1 20100611

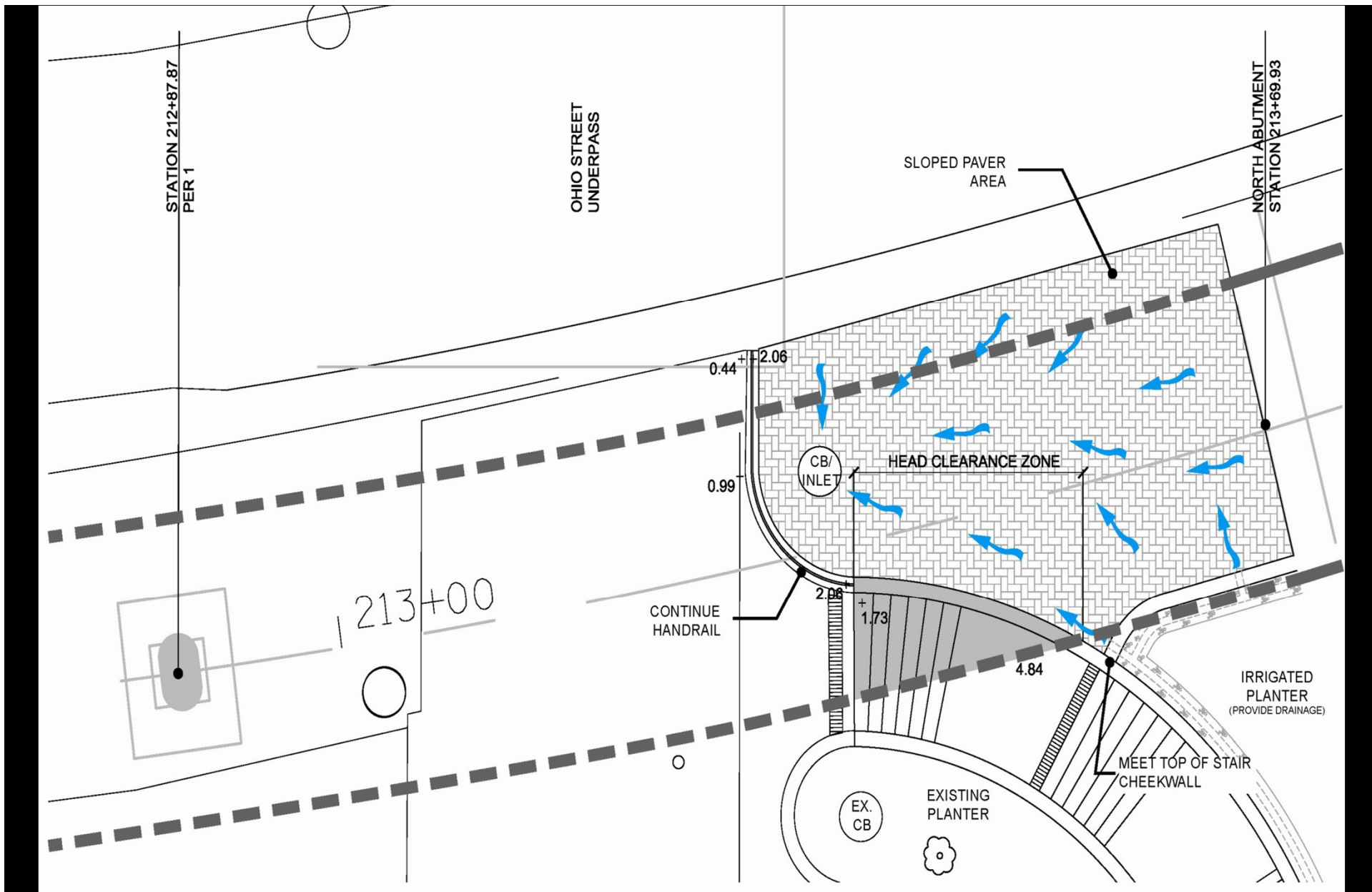
RAHM EMANUEL, MAYOR

THE CITY OF CHICAGO • DEPARTMENT OF TRANSPORTATION • DIVISION OF PROJECT DEVELOPMENT

Jane Addams Park Stairs
At Ohio Street Tunnel
Lakefront Trail Improvement



APPROXIMATE HEAD CLEARANCE HEIGHTS
LSK A 20100611



RAHM EMANUEL, MAYOR

THE CITY OF CHICAGO • DEPARTMENT OF TRANSPORTATION • DIVISION OF PROJECT DEVELOPMENT

**Head Clearance at Ohio Street
Lakefront Trail Improvement**



RAHM EMANUEL, MAYOR

THE CITY OF CHICAGO • DEPARTMENT OF TRANSPORTATION • DIVISION OF PROJECT DEVELOPMENT

Proposed View
Looking West on Grand Avenue
Lakefront Trail Improvement



RAHM EMANUEL, MAYOR

THE CITY OF CHICAGO • DEPARTMENT OF TRANSPORTATION • DIVISION OF PROJECT DEVELOPMENT

Graphic and Lighting Detail

Lakefront Trail Improvement

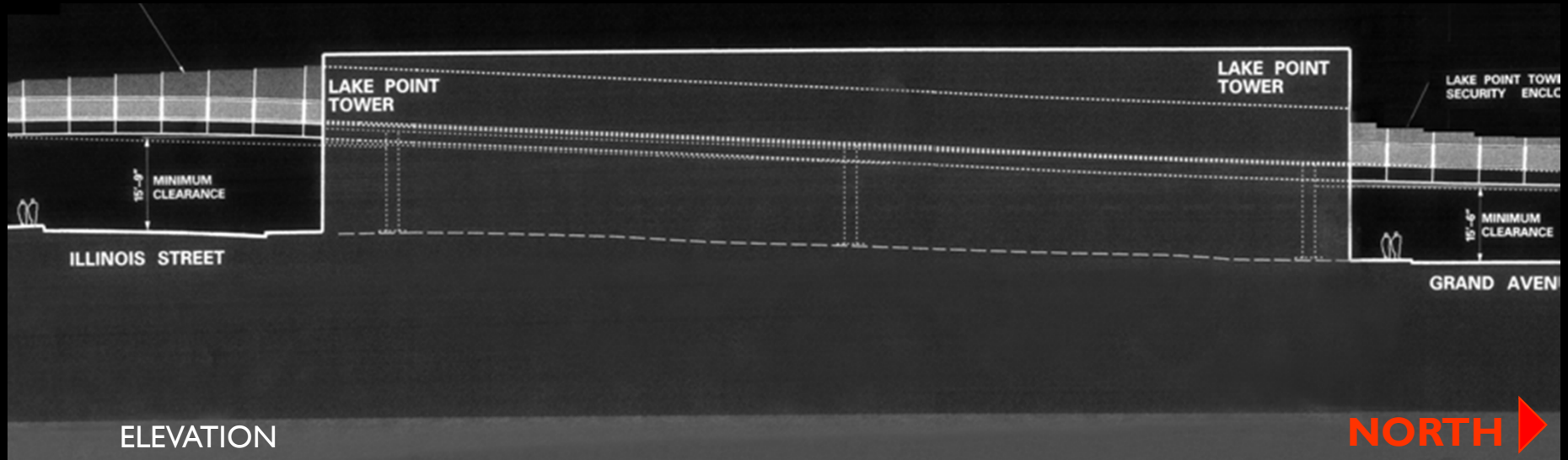
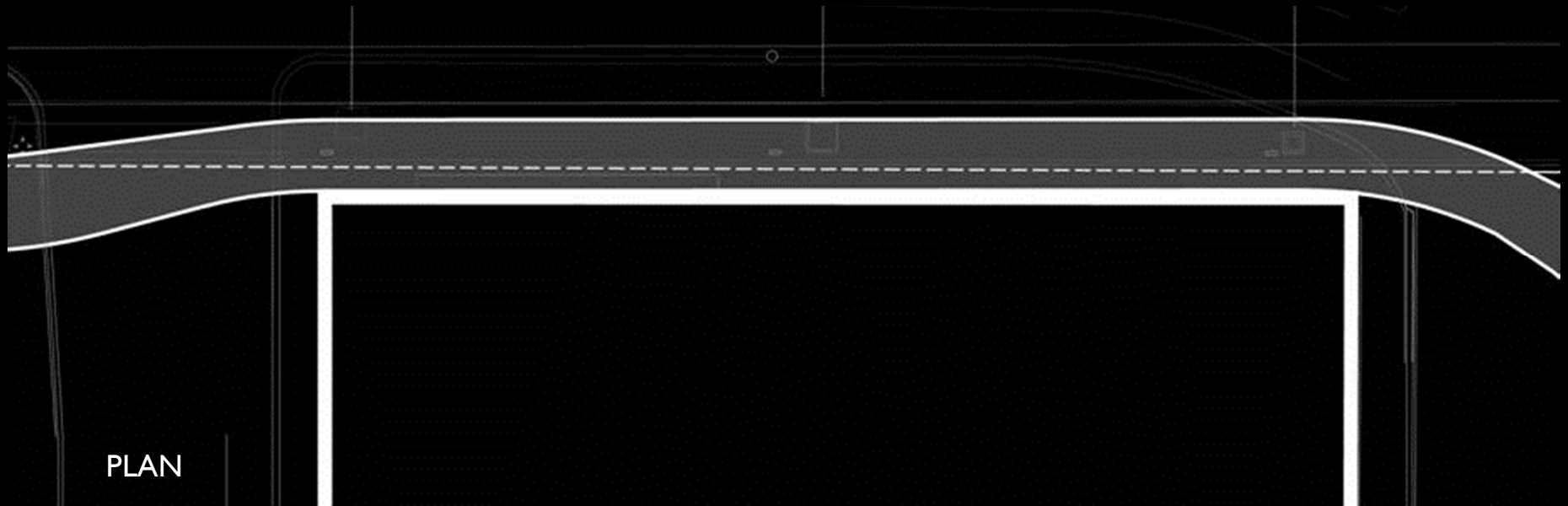


NORTH 

RAHM EMANUEL, MAYOR

THE CITY OF CHICAGO • DEPARTMENT OF TRANSPORTATION • DIVISION OF PROJECT DEVELOPMENT

Plan and Elevation
At Lake Point Tower
Lakefront Trail Improvement



RAHM EMANUEL , MAYOR

THE CITY OF CHICAGO • DEPARTMENT OF TRANSPORTATION • DIVISION OF PROJECT DEVELOPMENT

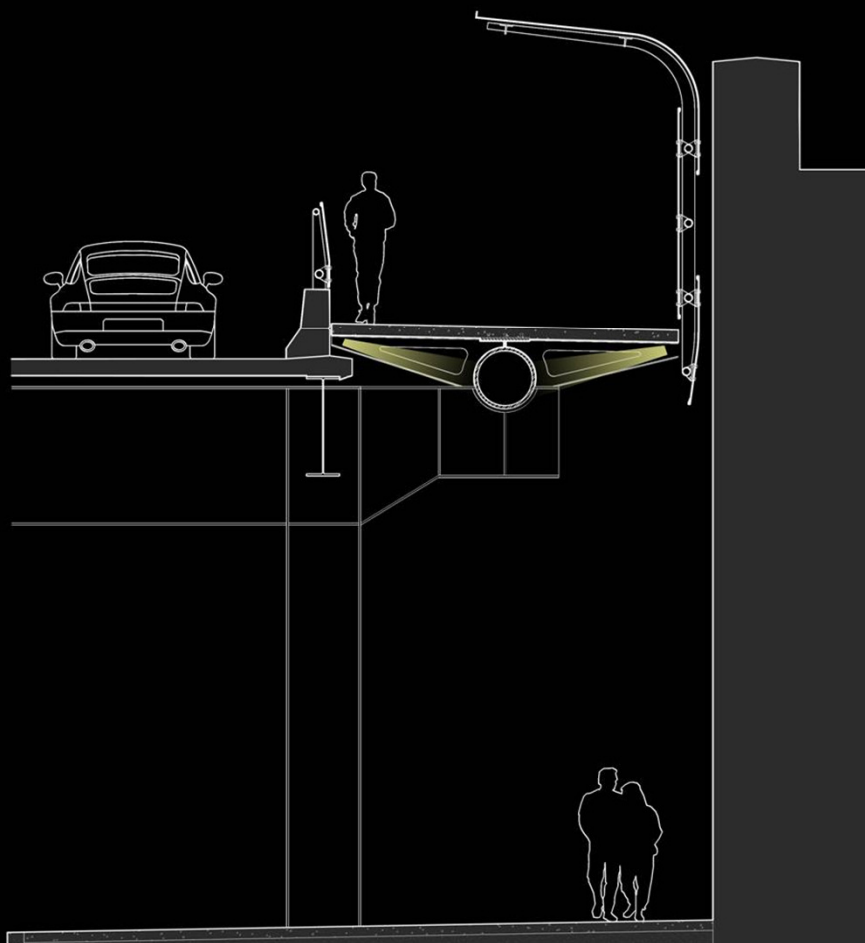
Plan and Elevation
At Lake Point Tower
Lakefront Trail Improvement



RAHM EMANUEL, MAYOR

THE CITY OF CHICAGO • DEPARTMENT OF TRANSPORTATION • DIVISION OF PROJECT DEVELOPMENT

Existing Conditions
Behind LPT Garage
Lakefront Trail Improvement



PARTIAL ENCLOSURE SECTION



RAHM EMANUEL, MAYOR

THE CITY OF CHICAGO • DEPARTMENT OF TRANSPORTATION • DIVISION OF PROJECT DEVELOPMENT

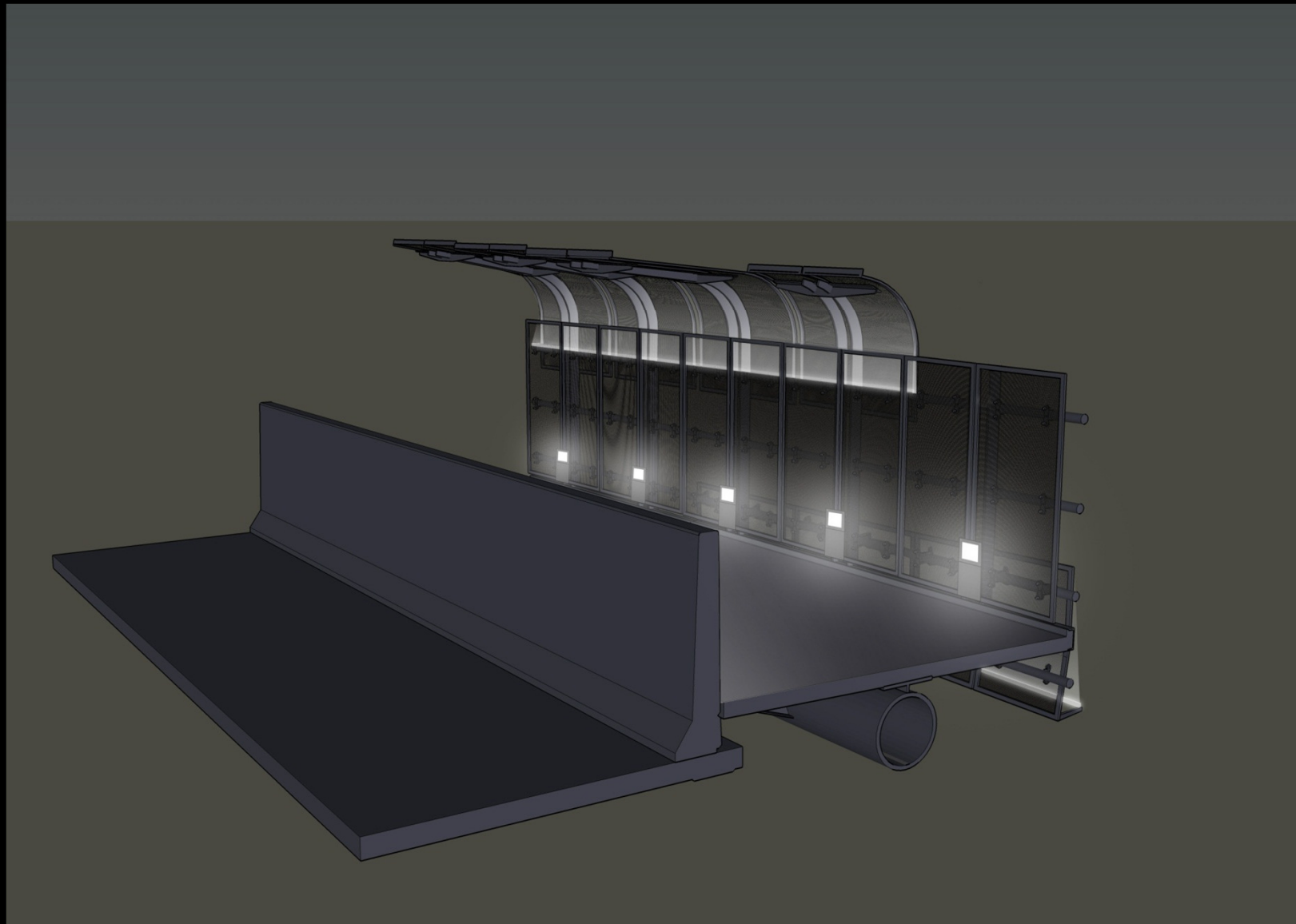
Trail Adjacent to LPT with
Security Barrier Section
Lakefront Trail Improvement



RAHM EMANUEL, MAYOR

THE CITY OF CHICAGO • DEPARTMENT OF TRANSPORTATION • DIVISION OF PROJECT DEVELOPMENT

Proposed
View North From Lake Shore Dr.
Lakefront Trail Improvement



RAHM EMANUEL, MAYOR

THE CITY OF CHICAGO • DEPARTMENT OF TRANSPORTATION • DIVISION OF PROJECT DEVELOPMENT

Proposed
View North From Lake Shore Dr.
Lakefront Trail Improvement





RAHM EMANUEL, MAYOR

THE CITY OF CHICAGO • DEPARTMENT OF TRANSPORTATION • DIVISION OF PROJECT DEVELOPMENT

Proposed
View West From Illinois St.
Lakefront Trail Improvement



RAHM EMANUEL, MAYOR

THE CITY OF CHICAGO • DEPARTMENT OF TRANSPORTATION • DIVISION OF PROJECT DEVELOPMENT

Proposed View
Looking West on Grand Avenue
Lakefront Trail Improvement



RAHM EMANUEL, MAYOR

THE CITY OF CHICAGO • DEPARTMENT OF TRANSPORTATION • DIVISION OF PROJECT DEVELOPMENT

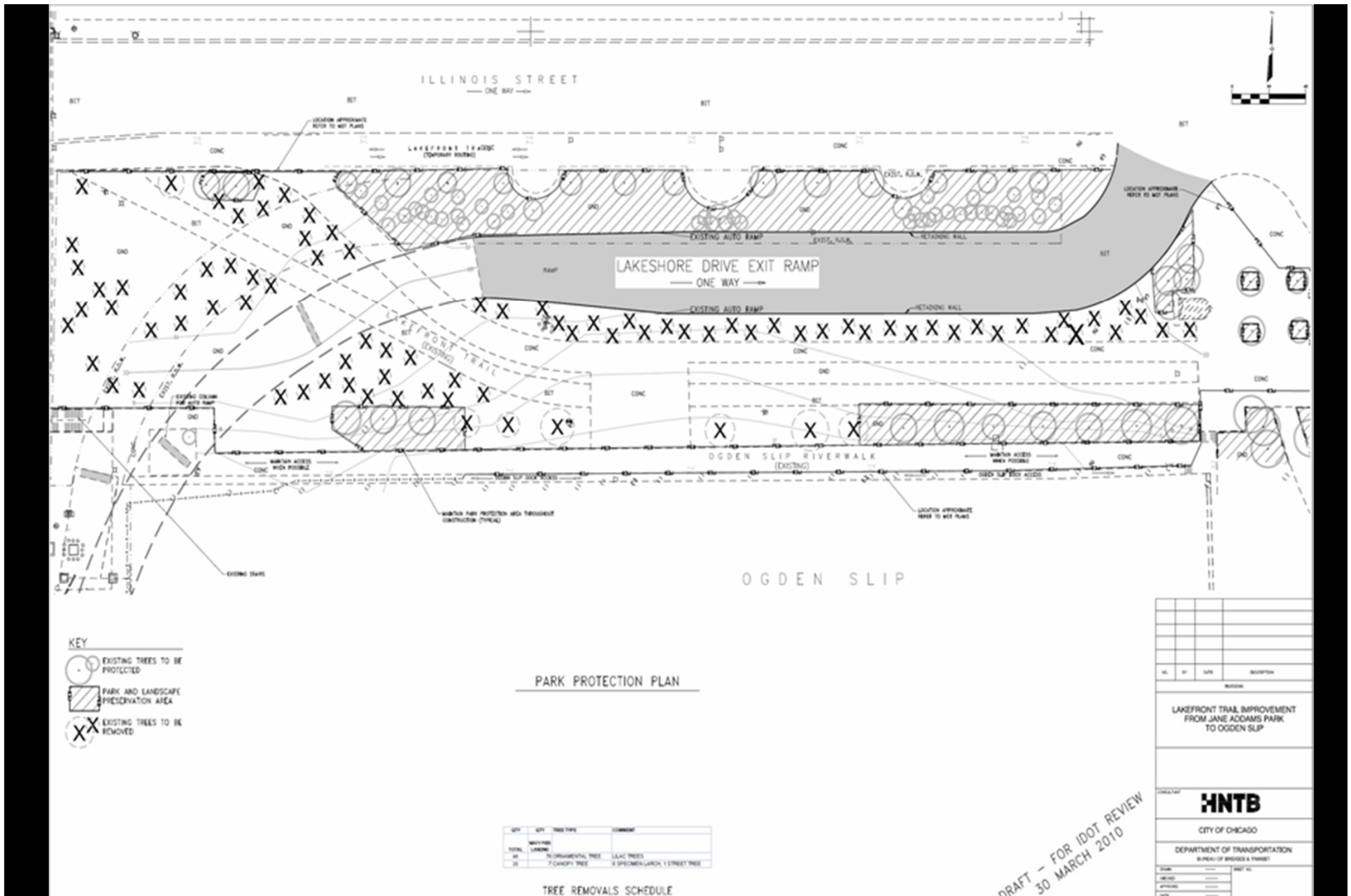
Trail Ramp at Navy Pier
Lakefront Trail Improvement



RAHM EMANUEL, MAYOR

THE CITY OF CHICAGO • DEPARTMENT OF TRANSPORTATION • DIVISION OF PROJECT DEVELOPMENT

Trail Ramp at Navy Pier
Lakefront Trail Improvement

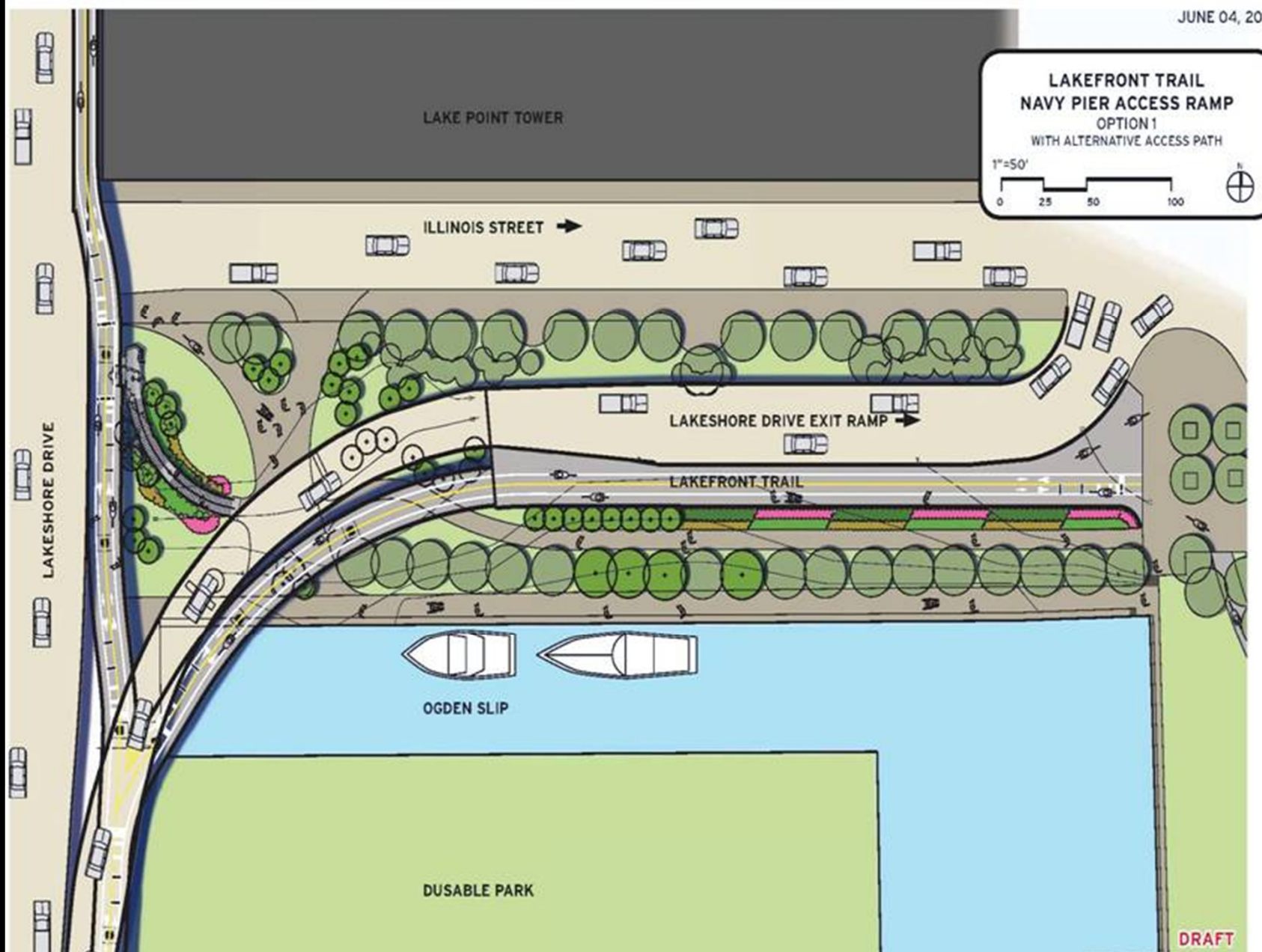


RAHM EMANUEL, MAYOR

THE CITY OF CHICAGO • DEPARTMENT OF TRANSPORTATION • DIVISION OF PROJECT DEVELOPMENT

Park Protection Plan at Ramp
Lakefront Trail Improvement

JUNE 04, 2010



RAHM EMANUEL, MAYOR

THE CITY OF CHICAGO • DEPARTMENT OF TRANSPORTATION • DIVISION OF PROJECT DEVELOPMENT

Navy Pier Landing Landscape
Option 1
Lakefront Trail Improvement

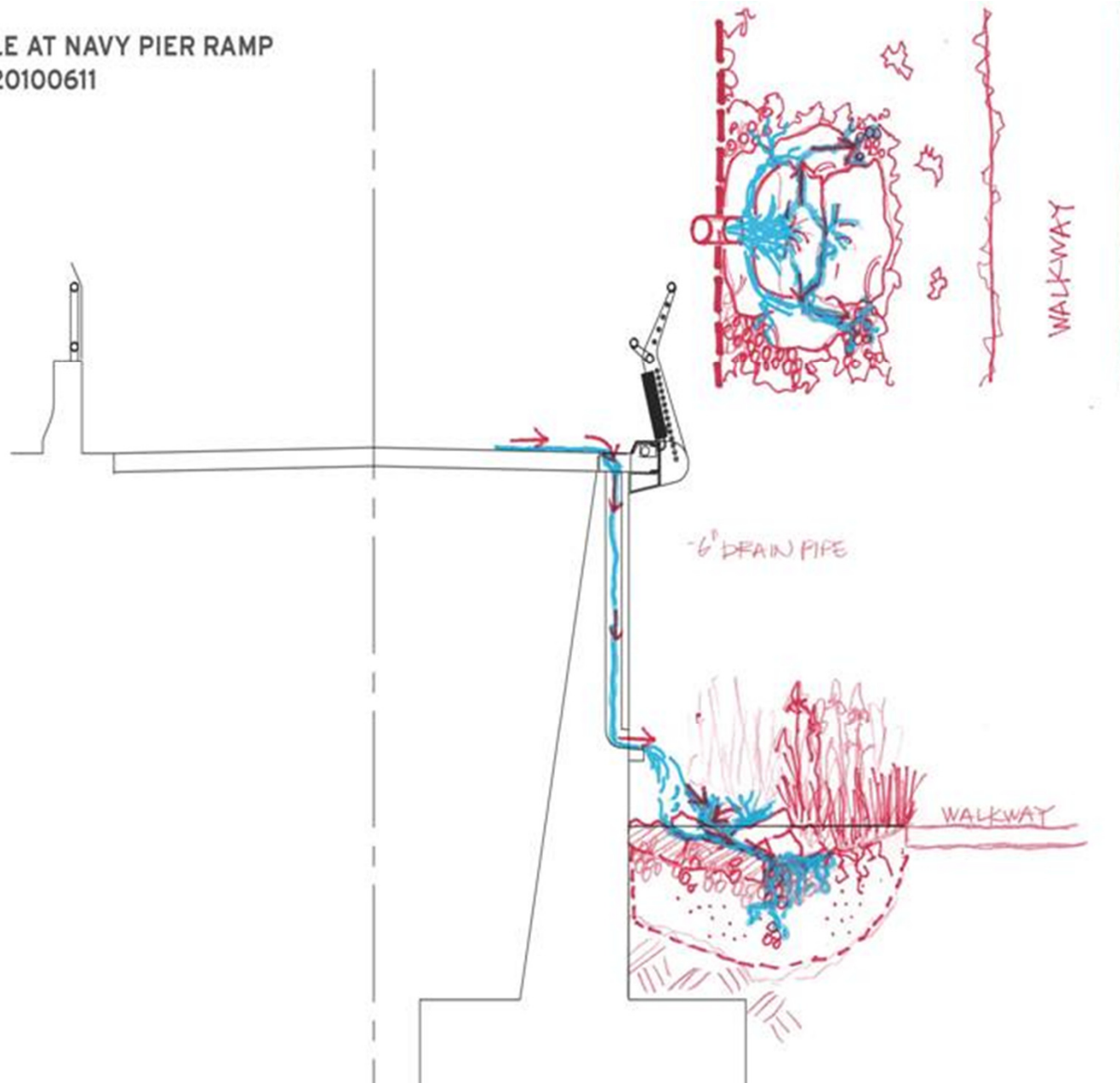


RAHM EMANUEL, MAYOR

THE CITY OF CHICAGO • DEPARTMENT OF TRANSPORTATION • DIVISION OF PROJECT DEVELOPMENT

Navy Pier Landing Landscape
Option I Rendering
Lakefront Trail Improvement

BIOSWALE AT NAVY PIER RAMP
LSK C2 20100611

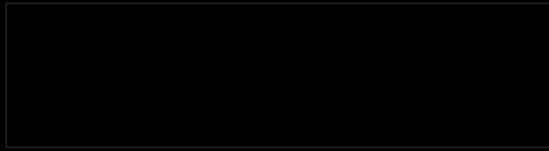


RAHM EMANUEL, MAYOR

THE CITY OF CHICAGO • DEPARTMENT OF TRANSPORTATION • DIVISION OF PROJECT DEVELOPMENT

Navy Pier Landing Bioswale
Drain Pipe with Scupper
Lakefront Trail Improvement

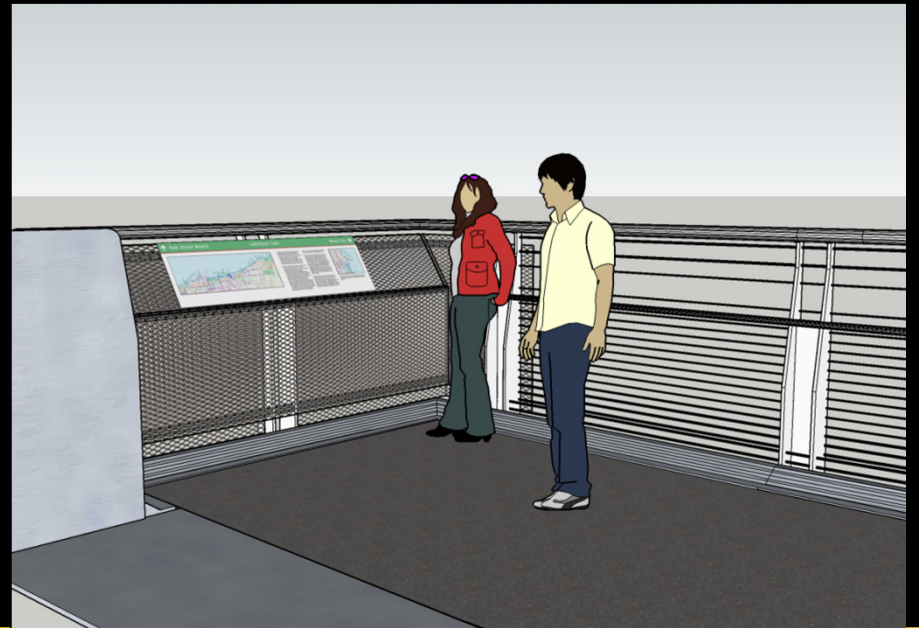
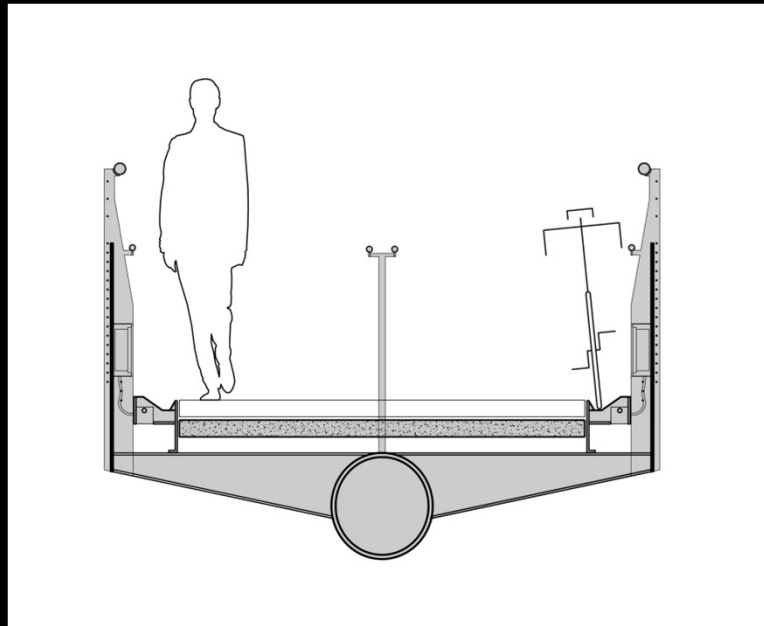




RAHM EMANUEL, MAYOR

THE CITY OF CHICAGO • DEPARTMENT OF TRANSPORTATION • DIVISION OF PROJECT DEVELOPMENT

Stair Rendering with Landscape
Lakefront Trail Improvement

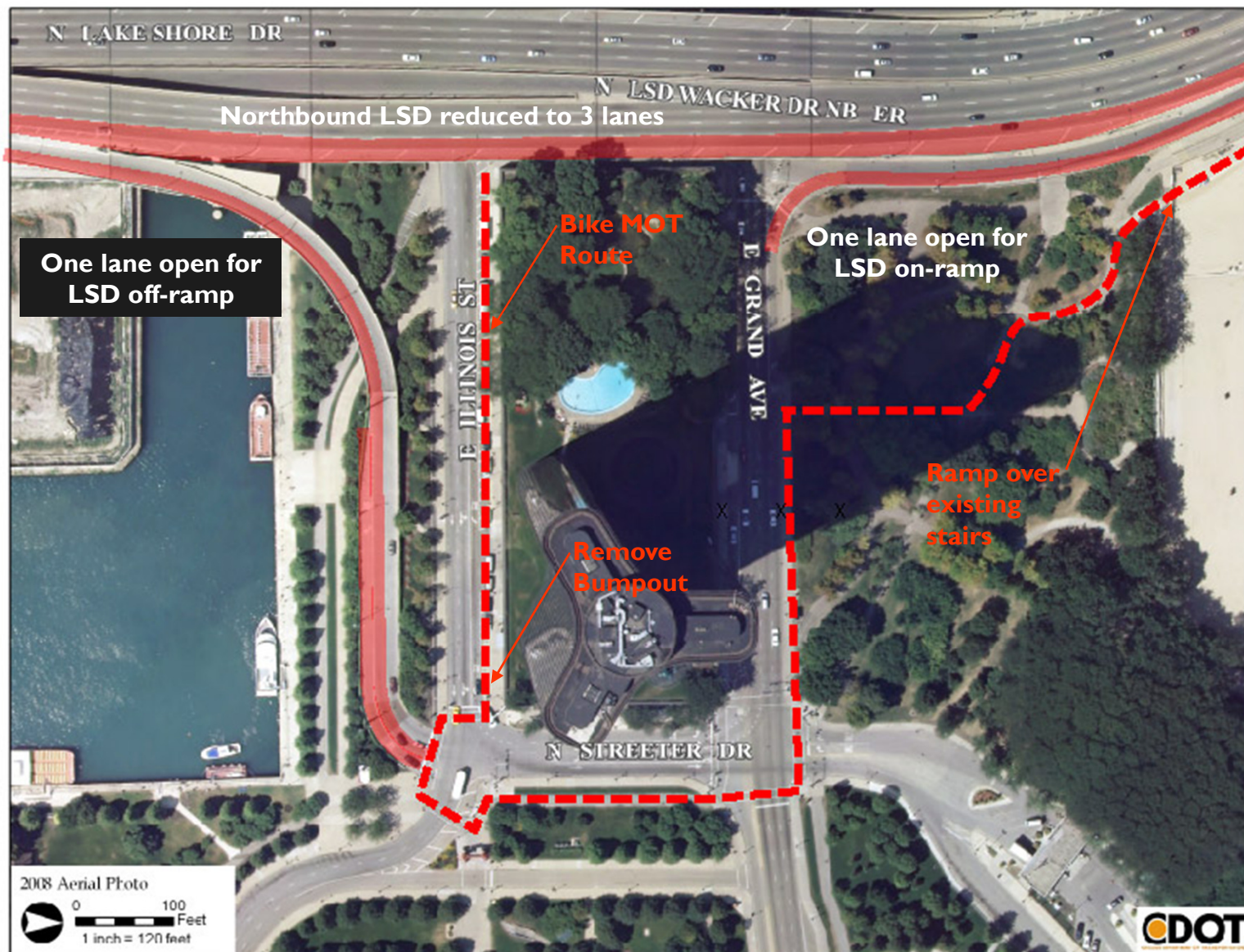


RAHM EMANUEL, MAYOR

THE CITY OF CHICAGO • DEPARTMENT OF TRANSPORTATION • DIVISION OF PROJECT DEVELOPMENT

Stair Rendering Section and
Landing
Lakefront Trail Improvement

Maintenance of Traffic



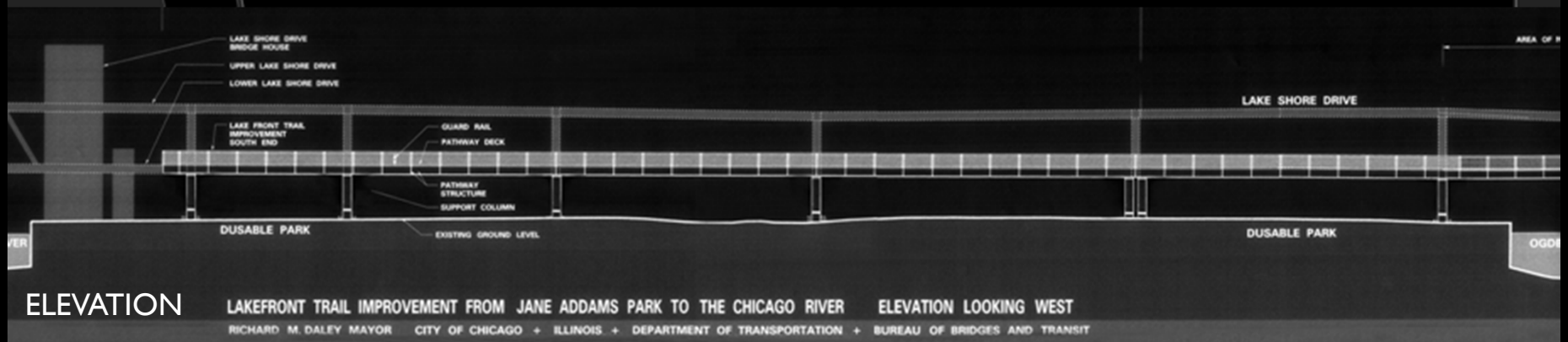
RAHM EMANUEL, MAYOR

THE CITY OF CHICAGO • DEPARTMENT OF TRANSPORTATION • DIVISION OF PROJECT DEVELOPMENT

MOT Overview

Lakefront Trail Improvement

Segment 2
Lakefront Trail through
DuSable Park



RAHM EMANUEL , MAYOR

THE CITY OF CHICAGO • DEPARTMENT OF TRANSPORTATION • DIVISION OF PROJECT DEVELOPMENT

Plan and Elevation
at DuSable Park
Lakefront Trail Improvement



RAHM EMANUEL, MAYOR

THE CITY OF CHICAGO • DEPARTMENT OF TRANSPORTATION • DIVISION OF PROJECT DEVELOPMENT

Existing Conditions
Along DuSable Park
Lakefront Trail Improvement



RAHM EMANUEL, MAYOR

THE CITY OF CHICAGO • DEPARTMENT OF TRANSPORTATION • DIVISION OF PROJECT DEVELOPMENT

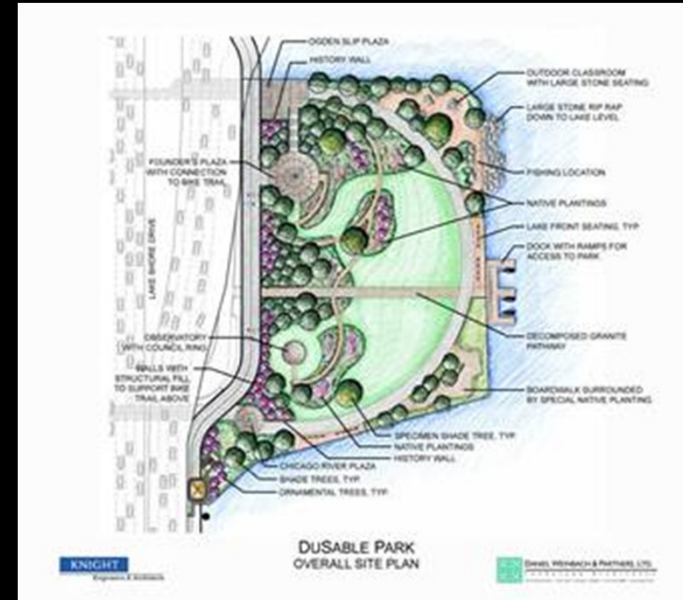
Trail through DuSable Park
Lakefront Trail Improvement



RAHM EMANUEL, MAYOR

THE CITY OF CHICAGO • DEPARTMENT OF TRANSPORTATION • DIVISION OF PROJECT DEVELOPMENT

Spire Ramps and Lakefront Trail
Realignment in DuSable Park
Lakefront Trail Improvement



RAHM EMANUEL, MAYOR

THE CITY OF CHICAGO • DEPARTMENT OF TRANSPORTATION • DIVISION OF PROJECT DEVELOPMENT

Spire Ramps and Lakefront Trail
Realignment in DuSable Park
Lakefront Trail Improvement

Segment 1
Lakefront Trail over the
Chicago River



RAHM EMANUEL, MAYOR

THE CITY OF CHICAGO • DEPARTMENT OF TRANSPORTATION • DIVISION OF PROJECT DEVELOPMENT

Existing Conditions South End
Lakefront Trail Improvement



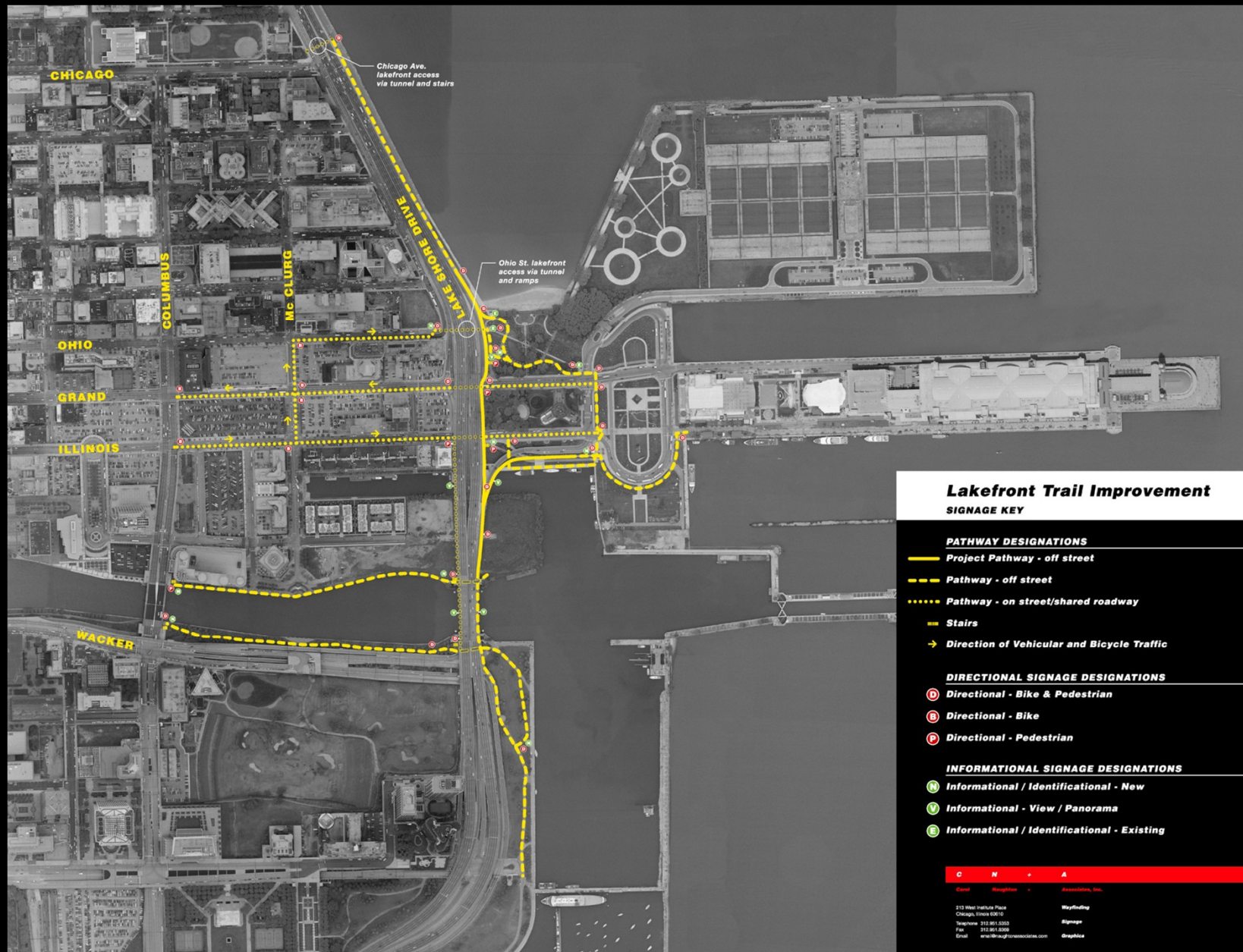
RAHM EMANUEL, MAYOR

THE CITY OF CHICAGO • DEPARTMENT OF TRANSPORTATION • DIVISION OF PROJECT DEVELOPMENT

SW Stair Tower Connection
Chicago River Bridge Phase I
Lakefront Trail Improvement

WAYFINDING

- Wayfinding encompasses all of the ways in which people orient themselves in physical space and navigate from place to place on the Lakefront Trail through:
 - Strategic design to help people understand the trail and to help them identify destinations that can be accessed via the trail, such as the Museum Campus, beaches, and Navy Pier;
 - Assisting people in understanding how to safely use the trail through the use of signage and pavement markings; and finally
 - Including signs, maps, and landmarks as necessary.



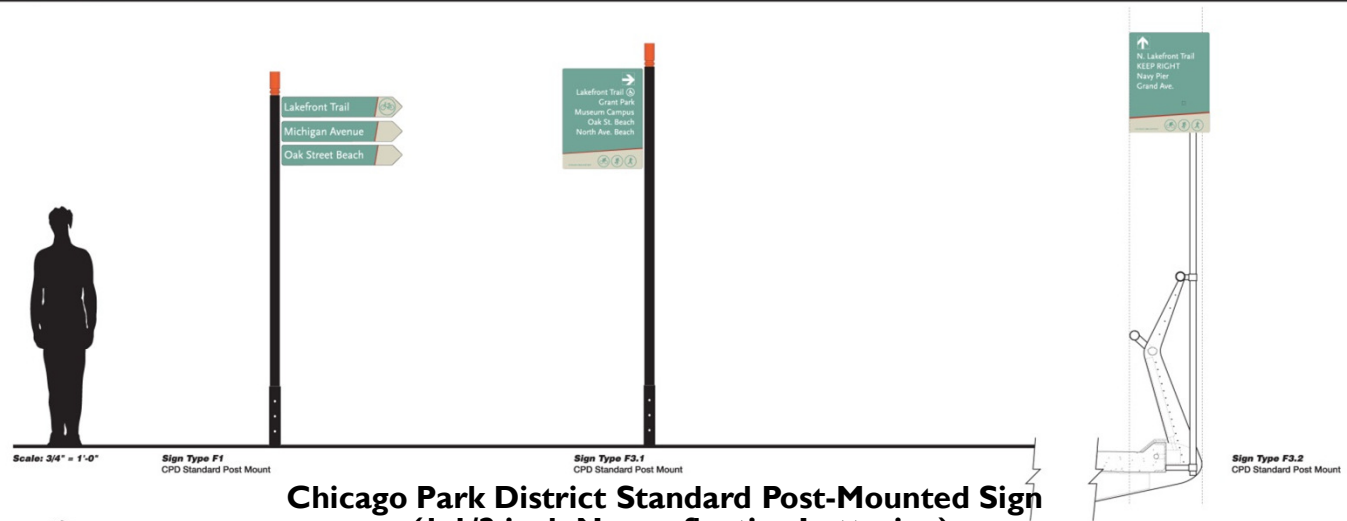
RAHM EMANUEL, MAYOR

THE CITY OF CHICAGO • DEPARTMENT OF TRANSPORTATION • DIVISION OF PROJECT DEVELOPMENT

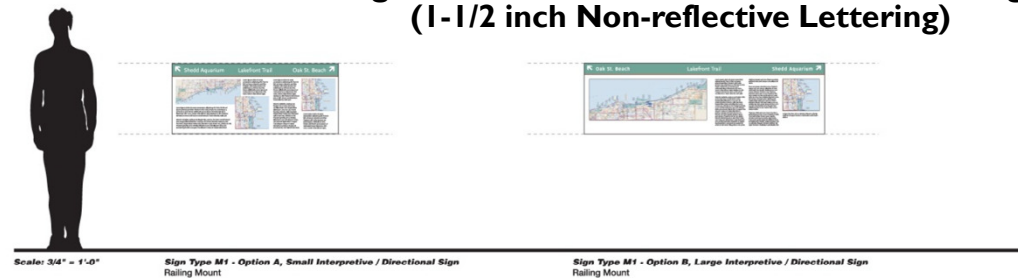
Wayfinding Overview

Lakefront Trail Improvement

Sign Type Overview



Chicago Park District Standard Post-Mounted Sign (1-1/2 inch Non-reflective Lettering)



Interpretive/Directional Rail-Mounted Sign



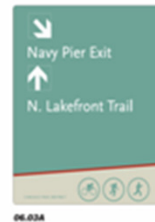
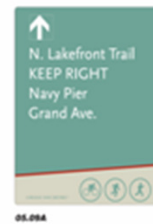
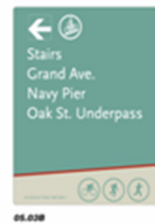
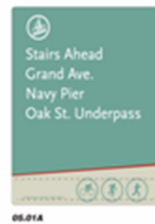
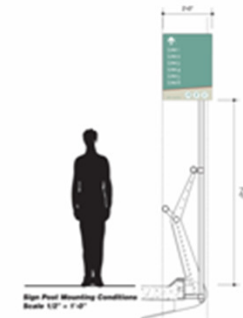
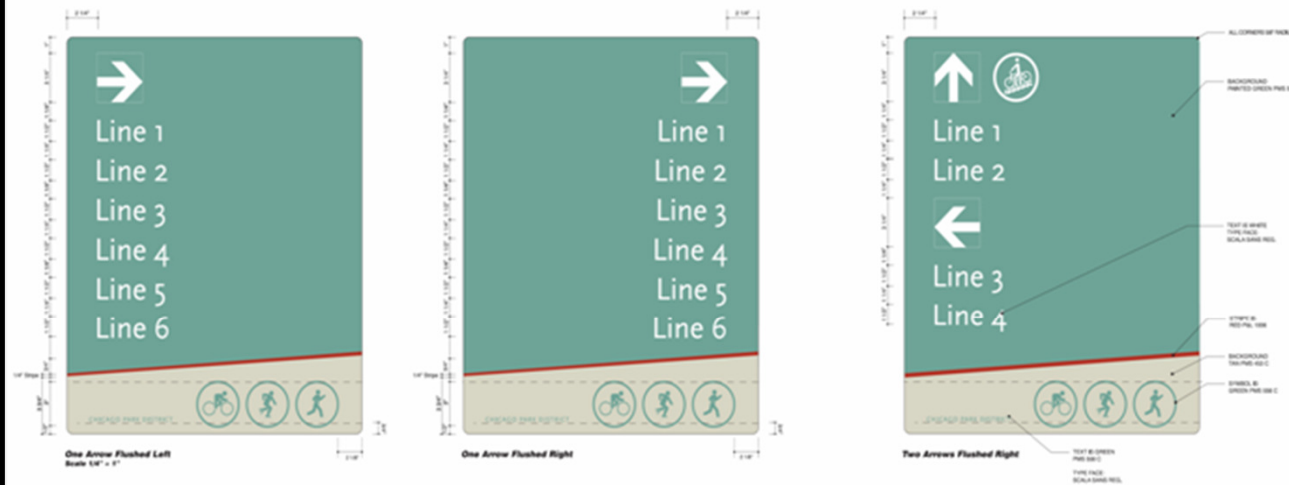
Interpretive/Directional Ground-Mounted Sign

RAHM EMANUEL, MAYOR

THE CITY OF CHICAGO • DEPARTMENT OF TRANSPORTATION • DIVISION OF PROJECT DEVELOPMENT

Sign Type Overview

Lakefront Trail Improvement



NO.	BY	DATE	DESCRIPTION		
RECEIVED					
 LAKFERONT TRAIL IMPROVEMENT FROM JANE ADDAMS PARK TO THE CANYON RIVER					
SIGN TYPE F3.2					
CITY OF CHICAGO					
DEPARTMENT OF TRANSPORTATION BUREAU OF BRIDGES & TUNNELS					
APPROVED	CNL	MAINT NO.			
DESIGNED					
DRAWN	ST-108				
SCALE					
CONTRACT NO.		PROJECT NO.	REVISED		
			3/7/76		

IN PROGRESS



RAHM EMANUEL, MAYOR

THE CITY OF CHICAGO • DEPARTMENT OF TRANSPORTATION • DIVISION OF PROJECT DEVELOPMENT

Post-Mounted Sign Perspective

Lakefront Trail Improvement

Sign Type F1



Sign Face Elevations
Scale: 3" = 1'-0"

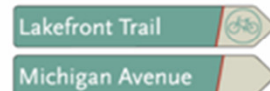


F1
Mounting Condition:
1. CPD standard post

Sign Post Mounting Condition
Scale: 1/8" = 1'-0"



01.01A/B



02.03A/B



03.05A/B



04.06A/B



05.07A/B



06.13A/B



07.08A/B



08.16A/B

Material and Fabrication:
• All materials and fabrication to be consistent with approved existing Chicago Park District Sign Standards

Sign Panel
• Panel is 1/8" thick painted steel surface with message (supported structure, p. 5.4/32), Chicago Park District Sign Standards

• All corners to be reduced 5/8" before painting

Support Structure

• Welded flat stock construction

• All members 1/2" thick steel

• Cut plate when necessary

• Grind smooth all welds

• Oversize all holes, fabricator to verify all hole locations and diameters

Colors

• Paint all edges black

IN PROGRESS

RAHM EMANUEL, MAYOR

THE CITY OF CHICAGO • DEPARTMENT OF TRANSPORTATION • DIVISION OF PROJECT DEVELOPMENT

Standard Post-Mounted Sign
Sign Type F1
Lakefront Trail Improvement

Sign Type F1

Lakefront Trail



Michigan Avenue

Navy Pier

Jane Addams Park

Oak Street Beach



06.07A/B

Lakefront Trail

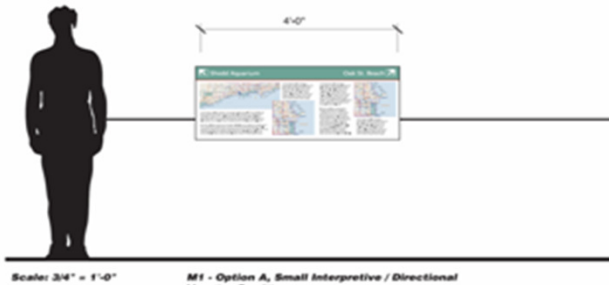


Navy Pier

Illinois Street

06.10A/B

Sign Type M1 - Interpretive / Directional Sign, Railing Mount



Scale: 3/4" = 1'-0"

M1 - Option A, Small Interpretive / Directional
Mounting Conditions:
1. To the rail at the top of the stairs
(to be determined)



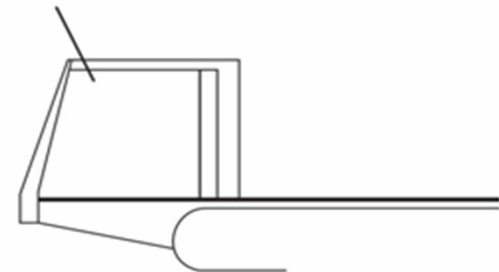
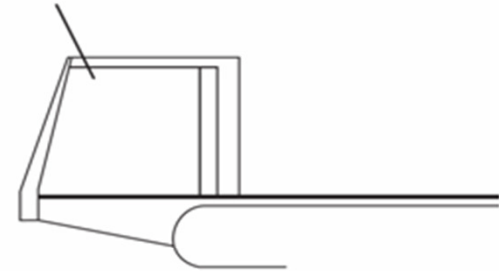
Scale: 3/4" = 1'-0"

M1 - Option B, Large Interpretive / Directional
Mounting Conditions:
1. To the rail at the top of the stairs
(to be determined)



Scale: N.T.S.

M1 - Option A, Small Interpretive



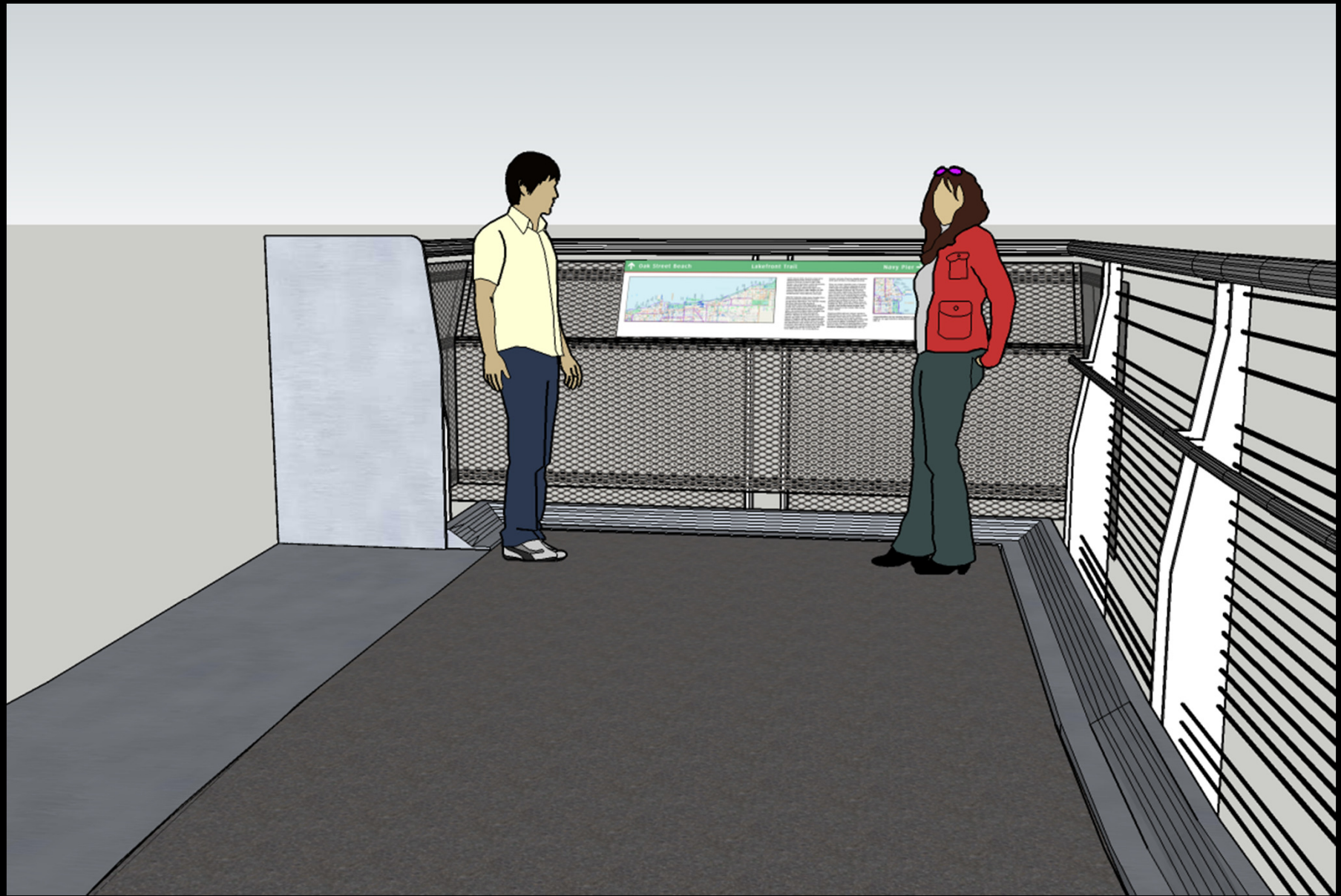
Scale: N.T.S.

M1 - Option B, Large Interpretive

RAHM EMANUEL, MAYOR

THE CITY OF CHICAGO • DEPARTMENT OF TRANSPORTATION • DIVISION OF PROJECT DEVELOPMENT

Interpretive / Directional Sign,
Railing Mount (Sign Type M1)
Lakefront Trail Improvement



RAHM EMANUEL, MAYOR

THE CITY OF CHICAGO • DEPARTMENT OF TRANSPORTATION • DIVISION OF PROJECT DEVELOPMENT

Rail-Mounted Sign Perspective
at Stair Landing
Lakefront Trail Improvement

Sign Type M2 - Directional Sign, Ground Mount

Plan View

Graphic Elevation
Scale: 3/4" = 1'-0"

Section View

M2 - Option A, Small Interpretive / Directional
Mounting Conditions:
1. Freestanding ground mount

Scale: N.T.S.

M2 - Option A, Small Interpretive

Plan View

Graphic Elevation
Scale: 3/4" = 1'-0"

Section View

M2 - Option B, Large Interpretive / Directional
Mounting Conditions:
1. Freestanding ground mount

Scale: N.T.S.

M2 - Option B, Large Interpretive

PROJECT INFORMATION			
NO.	DT	DATE	DESCRIPTION
LAKFERONT TRAIL IMPROVEMENT FROM JANE ADDAMS PARK TO THE CHICAGO RIVER			
SIGN TYPE M2			
CITY OF CHICAGO			
DEPARTMENT OF TRANSPORTATION BUREAU OF STREET & TRAVEL			
DESIGNER	CNA	DATE	WAY.17
APPROVED			
DATE	08/01/17		
SCALE	1/8" = 1'-0"		
PROJECT NO.	17-00000		

IN PROGRESS

THE CITY OF CHICAGO • DEPARTMENT OF TRANSPORTATION • DIVISION OF PROJECT DEVELOPMENT

Interpretive/Directional Ground-Mount Sign (Sign Type M2) **Lakefront Trail Improvement**

Questions

