

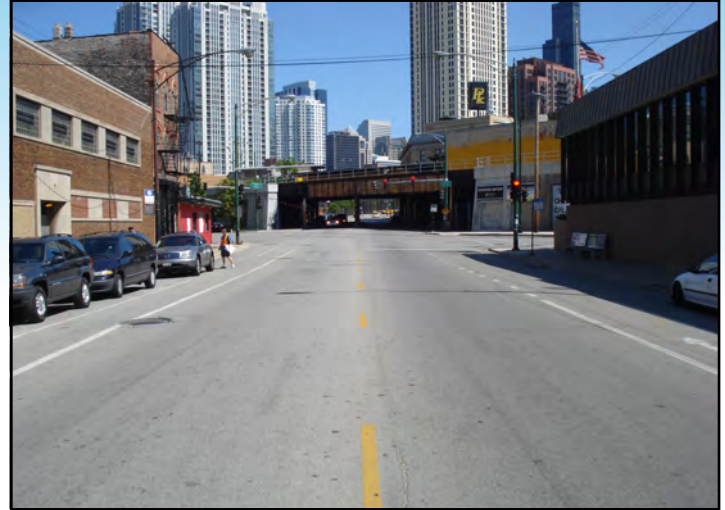
Milwaukee Avenue Spoke Route Project



Project Overview

Limits: Milwaukee Avenue - Kinzie Street to Elston Avenue • Length: 0.85 Miles

CDOT will begin work in 2013 on the Milwaukee Avenue Spoke Route Project. This project will feature barrier/buffer protected bike lanes, increased bike parking and improved pedestrian crossings. The new Milwaukee Avenue design will complement Chicago's future Bike Share System and highlight the corridor as a complete street by improving transportation options for all roadway users.



470 N. Milwaukee Ave - Existing Conditions

Project Data

- 638 reported crashes (2006 - 2011)
 - 15 serious injury crashes
 - 1 fatal crash
- 12,000 vehicles per day
 - 30% exceeding the speed limit
- Bicyclists represent over 40% of traffic during peak hours

Highlights

- Barrier/Buffer protected bike lanes
- High-visibility pedestrian crosswalks
- On-street bike parking
- Roadway resurfaced

Bicyclist Improvements

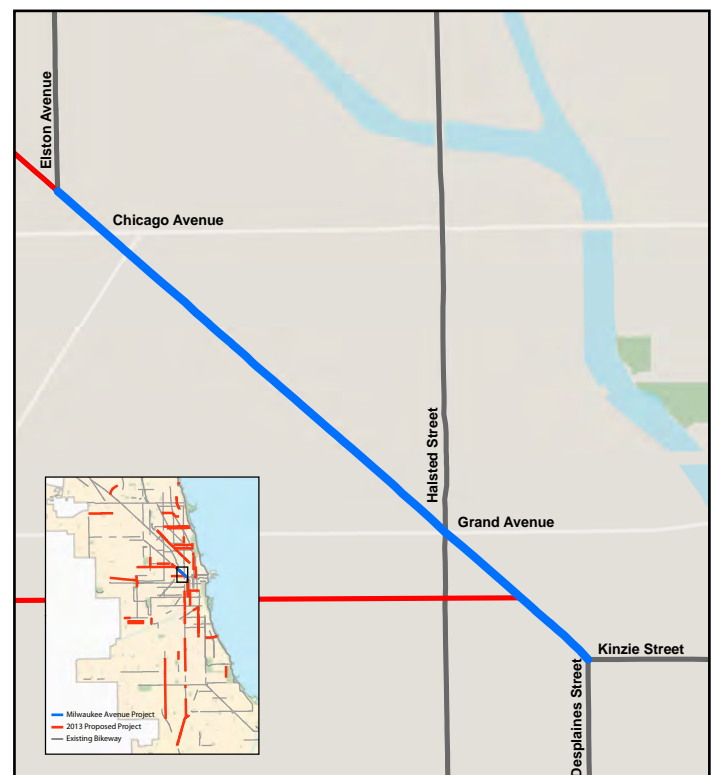
- Barrier/Buffer protected bike lane in both directions on Chicago's busiest street for bicycling
- Improved bike facilities to complement Chicago Bike Share
- Increased bike parking throughout the corridor

Pedestrian Improvements

- High-visibility continental crosswalks at all intersections
- Shortened pedestrian crossing distances

Motorist Improvements

- Milwaukee Ave to be resurfaced
- Increased separation from bicyclists
- Safer travel lane widths
- Improved traffic signal design



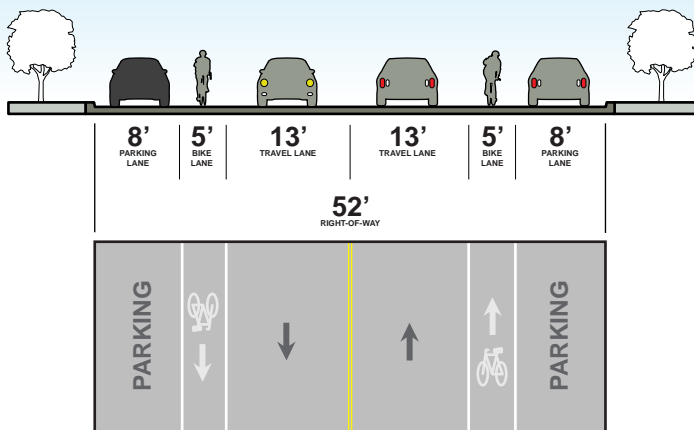
Milwaukee Avenue Spoke Route Project



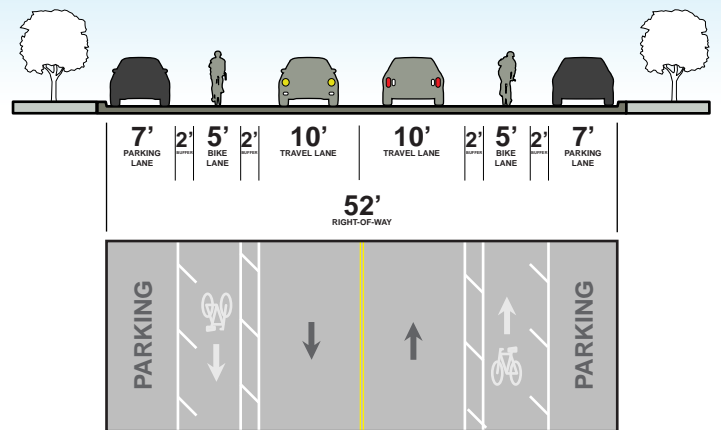
Project Overview

Limits: Milwaukee Avenue - Kinzie Street to Elston Avenue • Length: 0.85 Miles

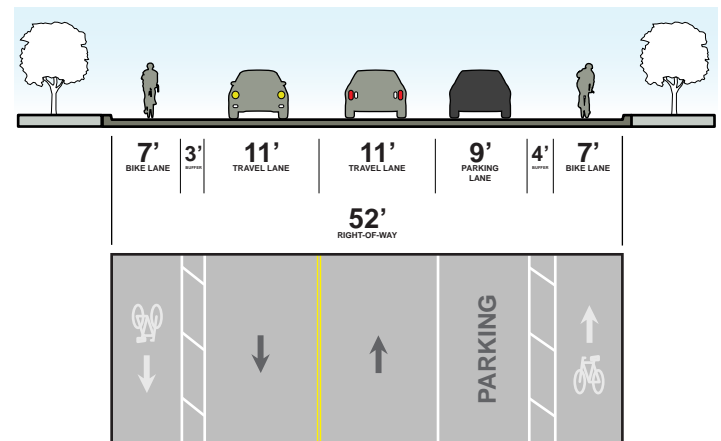
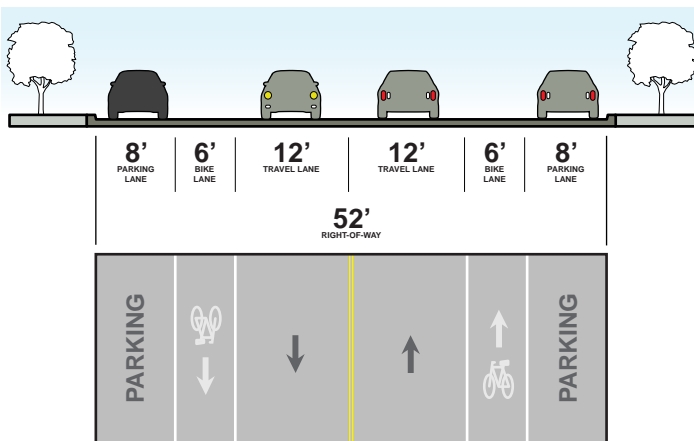
EXISTING CONDITIONS



PROPOSED CONDITIONS



Hubbard Street to Ohio Street



Erie Street to Morgan Street

For additional information, please email the Department of Transportation at cdotnews@cityofchicago.org, or visit www.cityofchicago.org/transportation

