



Chicago Flu Update



City of Chicago

Richard M. Daley, Mayor

May 13, 2011

Chicago Department of Public Health

Bechara Choucair, MD, Commissioner

The 16th Annual CDPH Infection Control Conference will be held on Thursday, June 2, 2011 at Malcolm X College. The agenda and registration information is available on the HAN home page at www.chicagohan.org

What is the risk?

The risk of influenza infection in Chicago is low. Locally, the percentage of specimens testing positive for influenza is at its lowest level seen since November and among the small number of specimens testing positive for influenza during the past surveillance week, all were influenza A (H1N1). This is the first week since December that no influenza B viruses were detected. The influenza vaccine protects against both influenza A and B. Vaccine is available in doctor's offices, retail pharmacies, CDPH Neighborhood Health Centers, and immunization walk-in clinics. A list of CDPH clinics is available on the [City of Chicago website](http://www.cityofchicago.org)¹ and by calling 311.

Are severe cases of influenza occurring?

No influenza-associated ICU admissions was reported for surveillance week 18 (May 1-7, 2011). This is the second consecutive week where no ICU admissions were reported. Since October, a total of 98 influenza-associated ICU admissions of Chicago residents have been reported to CDPH.² No deaths were reported for surveillance week 18. A total of fifteen deaths have been reported so far this season (both ICU and non-ICU) including two in pediatric patients.

How much influenza-like illness is occurring?

For the week of May 1-7, 2011, with 17 hospitals reporting, 3.8% of emergency room visits were due to ILI (i.e., fever of 100°F or greater, with cough or sore throat). This is similar to levels seen during the same surveillance week in 2010 and is the third consecutive week that a decrease has been noted (Figure 1). With 3 Chicago doctor's offices reporting, <1% of visits were due to ILI.

Which influenza strains are circulating?

With 7 laboratories reporting, 3 (1.4%) of 221 specimens tested were positive for influenza in week 18. All three positive specimens were subtyped as influenza A (H1N1). No specimens tested positive for influenza B (Figure 2).

Where can I get more information?

The Centers for Disease Control and Prevention's [FluView](http://www.cdc.gov/flu/view/)³ report provides national updates and trends related to the intensity of influenza activity across the United States, as well as detailed information on antiviral resistance, severity of illness, and other topics. Updates specific to [Illinois](http://www.idph.state.il.us/flu/fluupdate10-11.htm)⁴ and [Suburban Cook County](http://www.cookcountypublichealth.org/flu_current_situation)⁵ are also available online.

Figure 1. Weekly reported percent of emergency department visits attributed to influenza-like illness, Chicago, by week, for current season (2010-2011) and previous season, October-May.

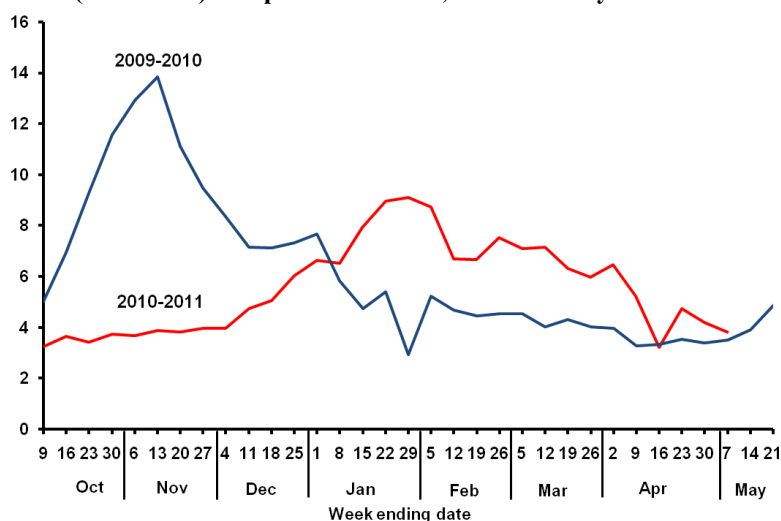
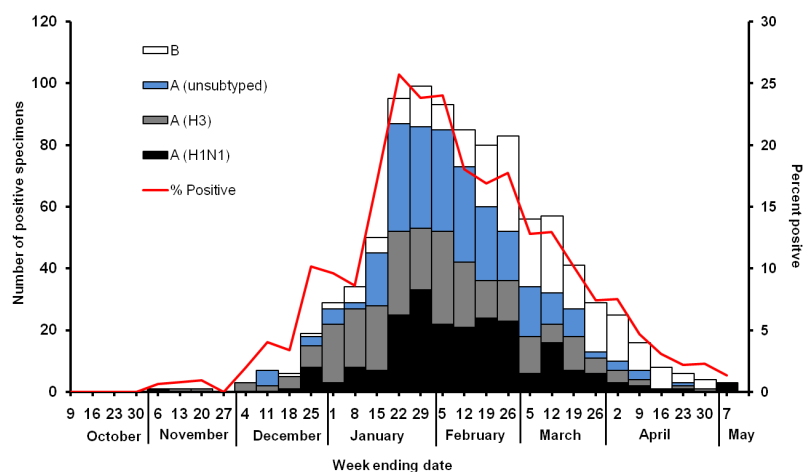


Figure 2. Influenza-positive tests reported by local laboratories serving Chicago hospitals that are equipped to identify influenza by types, by week, October 9, 2010-May 7, 2011



¹http://www.cityofchicago.org/city/en/depts/cdph/provdrs/clinic/svcs/find_a_clinic.html

²https://www.chicagohan.org/c/document_library/get_file?p_l_id=28960&folderId=24344&name=DLFE-144.pdf

³<http://www.cdc.gov/flu/weekly/>; ⁴<http://www.idph.state.il.us/flu/fluupdate10-11.htm>

⁵http://www.cookcountypublichealth.org/flu_current_situation