



Chicago Flu Update



City of Chicago

Rahm Emanuel, Mayor

Chicago Department of Public Health

Bechara Choucair, MD, Commissioner

May 20, 2011

The 16th Annual CDPH Infection Control Conference will be held on June 2, 2011 at Malcolm X College. Register now at www.cdphlms.com

What is the risk?

The risk of influenza infection in Chicago is low. Locally, the percentage of specimens testing positive for influenza is less than one percent, one of the lowest levels seen all season with only one specimen testing positive for influenza A. This is the second consecutive week since December that no influenza B viruses were detected. The influenza vaccine protects against both influenza A and B. Vaccine is available in doctor's offices, retail pharmacies, CDPH Neighborhood Health Centers, and immunization walk-in clinics. A list of CDPH clinics is available on the [City of Chicago website](http://www.cityofchicago.org)¹ and by calling 311. The last *Chicago Flu Update* of the 2010-2011 influenza surveillance season will be issued on 5/27/2011. CDPH will continue to conduct influenza surveillance throughout the summer. Updates will resume in October 2011 for the 2011-2012 season.

Are severe cases of influenza occurring?

No influenza-associated ICU admissions was reported for surveillance week 19 (May 8-14, 2011). This is the third consecutive week where no ICU admissions were reported. Since October, a total of 98 influenza-associated ICU admissions of Chicago residents have been reported to CDPH.² No deaths were reported for surveillance week 19. A total of fifteen deaths have been reported so far this season (both ICU and non-ICU) including two in pediatric patients.

How much influenza-like illness is occurring?

For the week of May 8-14, 2011, with 17 hospitals reporting, 3.6% of emergency room visits were due to ILI (i.e., fever of 100°F or greater, with cough or sore throat). This is similar to levels reported during the same surveillance week in 2010 and the third consecutive week that a decrease has been noted (Figure 1).

Which influenza strains are circulating?

With 7 laboratories reporting, 1 (<1%) of 207 specimens tested was positive for influenza in week 19, subtyped as influenza A (H1N1). No specimens tested positive for influenza B (Figure 2).

Where can I get more information?

The Centers for Disease Control and Prevention's [FluView](http://www.cdc.gov/flu/weekly/)³ report provides national updates and trends related to the intensity of influenza activity across the United States, as well as detailed information on antiviral resistance, severity of illness, and other topics. Updates specific to [Illinois](http://www.idph.state.il.us/flu/fluupdate10-11.htm)⁴ and [Suburban Cook County](http://www.cookcountypublichealth.org/flu_current_situation)⁵ are also available online.

Figure 1. Weekly reported percent of emergency department visits attributed to influenza-like illness, Chicago, by week, for current season (2010-2011) and previous season, October-May.

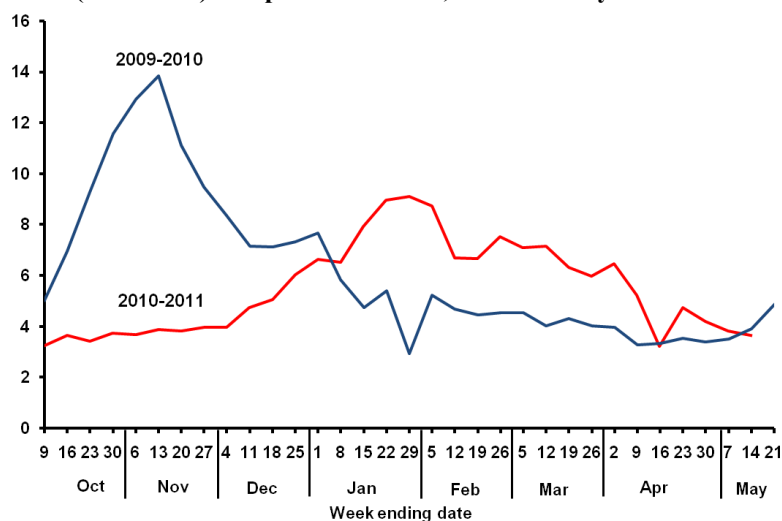
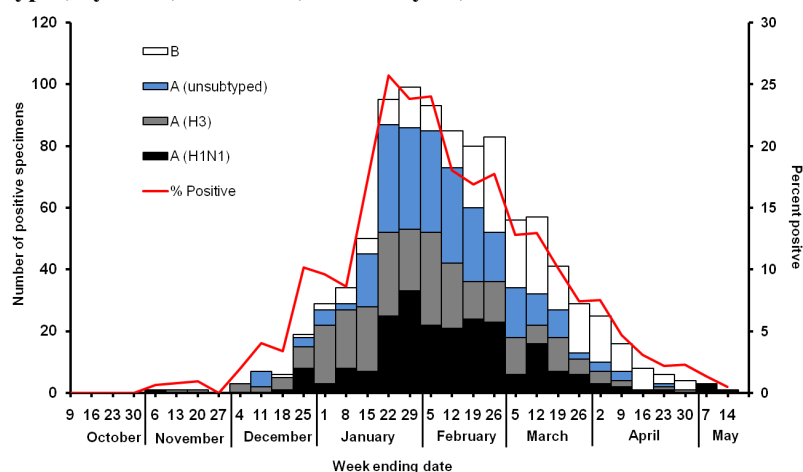


Figure 2. Influenza-positive tests reported by local laboratories serving Chicago hospitals that are equipped to identify influenza by types, by week, October 9, 2010-May 14, 2011



¹http://www.cityofchicago.org/city/en/depts/cdph/provdrs/clinic/svcs/find_a_clinic.html

²https://www.chicagohan.org/c/document_library/get_file?p_l_id=28960&folderId=24344&name=DLFE-144.pdf

³<http://www.cdc.gov/flu/weekly/>; ⁴<http://www.idph.state.il.us/flu/fluupdate10-11.htm>

⁵http://www.cookcountypublichealth.org/flu_current_situation