



Chicago Flu Update



City of Chicago
Richard M. Daley, Mayor

May 21, 2010

Chicago Department of Public Health
Bechara Choucair, MD, Commissioner

What is the risk?

As of May 21, 2010, the risk of pandemic influenza A (H1N1) infection in Chicago remains low. Despite several months of minimal influenza activity, the [Board of Health's Emergency Reporting Requirement](#)¹ is still in effect for Chicago hospitals, as well as for Chicago laboratories performing influenza subtyping tests. All Chicagoans aged six months and older are encouraged to protect themselves from infection by getting vaccinated with the pandemic influenza vaccine. Chicagoans should ask their healthcare provider or pharmacist about vaccine availability. For those without healthcare providers or whose healthcare providers do not have vaccine, vaccines are available at City of Chicago Fast Track Immunization clinics and neighborhood health centers; hours and locations are available by calling 311.

Are severe cases of influenza occurring?

Two hospitalizations associated with pandemic influenza A (H1N1) have been reported in Chicago residents for surveillance week 19 (May 9 – May 15, 2010) (figure 1).

How much influenza-like illness is occurring?

With 11 Chicago hospitals reporting, 3.7% of emergency department visits were due to influenza-like illness (i.e. fever of 100°F or greater, with cough or sore throat). Among five outpatient clinics reporting for the week of May 9 – May 15, 2010, less than 1% of doctor's office visits were due to influenza-like illness. This level of activity is in contrast to that of week 19 of 2009, when a higher rate of influenza-like illnesses was noted in association with the initial wave of the pandemic (figure 2).

Which influenza strains are circulating?

For the week May 9 – May 15, 2010, with seven local laboratories reporting, 1 influenza A-positive specimen for which subtyping was performed was reported as presumptive pandemic influenza A (H1N1). No seasonal influenza A or influenza B strains were reported. The influenza positivity rate is below 1% for the third consecutive week.

Where can I get more information?

[The February and April editions of the CD Info newsletter](#)² provide supplemental information about CDPH's pandemic surveillance, investigation, and vaccine response. The Centers for Disease Control and Prevention's [Flu-View](#)³ report provides national updates and trends related to the intensity of influenza activity across the United States, as well as detailed information on antiviral resistance, severity of illness, and other topics. Updates specific to [Illinois](#)⁴ and [Suburban Cook County](#)⁵ are also available online.

Figure 1. Reported number of hospitalizations associated with confirmed or presumptive pandemic influenza A (H1N1), Chicago, by week of specimen collection, April 2009—May 2010

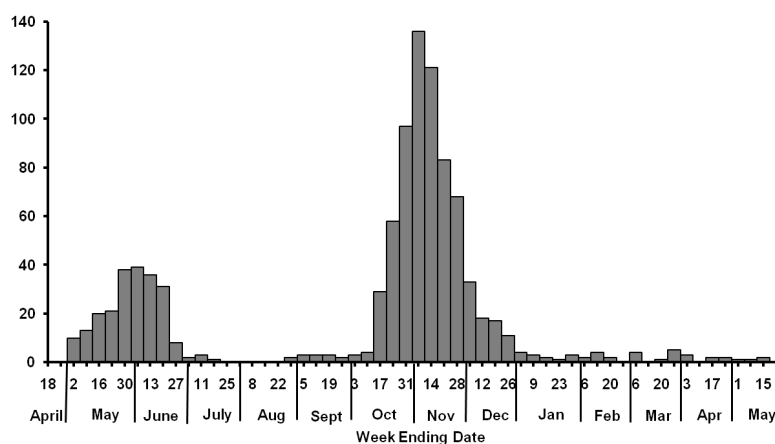
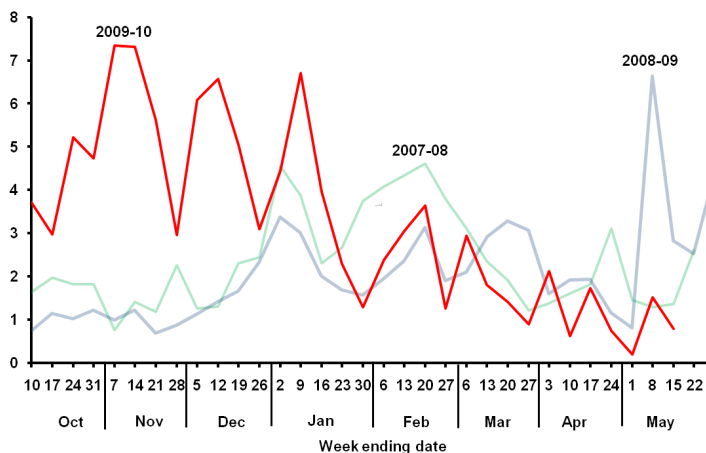


Figure 2. Percent of visits to enrolled doctor's offices attributed to influenza-like illness, Chicago, by week, for current season (2009-10) and previous two seasons, October—May



¹ https://www.chicagohan.org/c/document_library/get_file?p_l_id=28960&folderId=24345&name=DLEFE-95.pdf

² http://www.cityofchicago.org/city/en/depts/cdph/supp_info/cd_info/2010_cd_info_newsletters.html

³ <http://www.cdc.gov/flu/weekly/>; ⁴ <http://www.idph.state.il.us/flu/fluupdate09-10.htm>; ⁵ http://www.cookcountypublichealth.org/flu_current_situation