



# Chicago Flu Update



City of Chicago

Richard M. Daley, Mayor

Chicago Department of Public Health

Bechara Choucair, MD, Commissioner

April 23, 2010

## What is the risk?

As of April 23, 2010, the risk of pandemic influenza A (H1N1) infection in Chicago remains low. Despite several months of minimal influenza activity, the [Board of Health's Emergency Reporting Requirement](#)<sup>1</sup> is still in effect for Chicago hospitals, as well as for Chicago laboratories performing influenza subtyping tests. All Chicagoans aged six months and older are encouraged to protect themselves from infection by getting vaccinated with the pandemic influenza vaccine. Chicagoans should ask their healthcare provider or pharmacist about vaccine availability. For those without healthcare providers or whose healthcare providers do not have vaccine, vaccines are available at City of Chicago Fast Track Immunization clinics and neighborhood health centers; hours and locations are available by calling 311.

## Are severe cases of influenza occurring?

Two hospitalizations associated with pandemic influenza A (H1N1) have been reported in Chicago residents for surveillance week 15 (April 11 – April 17, 2010) (figure 1).

## How much influenza-like illness is occurring?

With 15 Chicago hospitals reporting, 2.9% of emergency department visits were due to influenza-like illness (i.e. fever of 100°F or greater, with cough or sore throat). In both pediatric hospitals and hospitals serving adults, rates have decreased to the levels that were reported in September 2009 (figure 2). Among seven outpatient clinics reporting for the week of April 11 – April 17, 2010, 1.7% of doctor's office visits were due to influenza-like illness. This level of activity is similar to levels seen during the same surveillance week during previous influenza seasons.

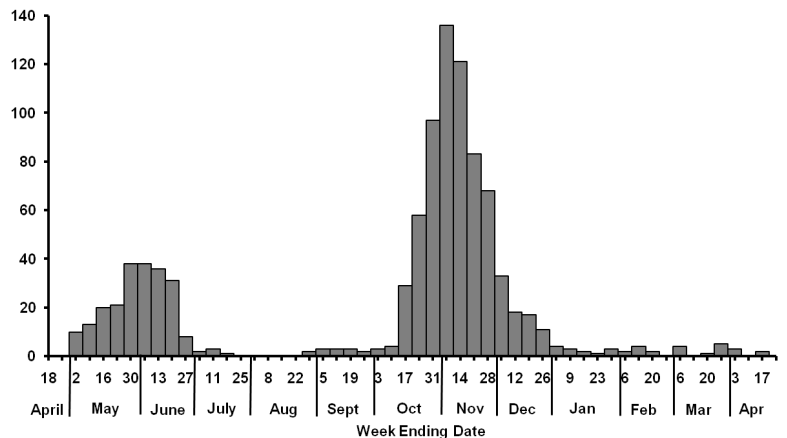
## Which influenza strains are circulating?

For the week of April 11 – April 17, 2010, with seven local laboratories reporting, five influenza A-positive specimens for which subtyping was performed were reported as presumptive pandemic influenza A (H1N1). No seasonal influenza A or influenza B strains were reported.

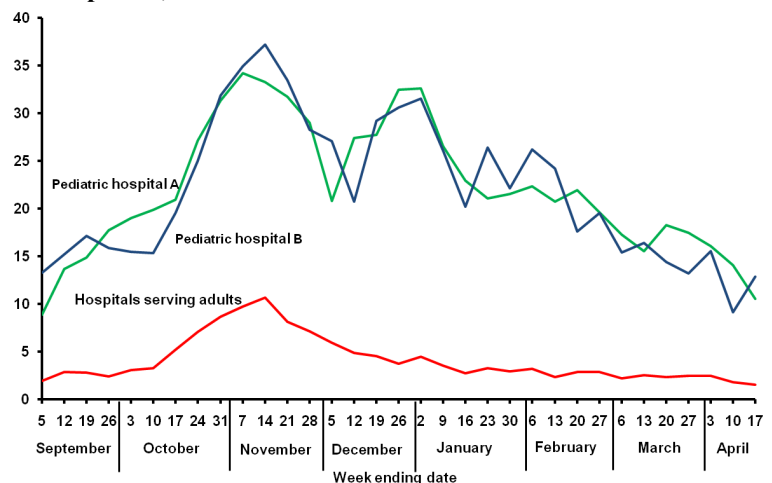
## Where can I get more information?

[The February and April editions of the CD Info newsletter](#)<sup>2</sup> provide supplemental information about CDPH's pandemic surveillance, investigation, and vaccine response. The Centers for Disease Control and Prevention's [Flu-View](#)<sup>3</sup> report provides national updates and trends related to the intensity of influenza activity across the United States, as well as detailed information on antiviral resistance, severity of illness, and other topics. Updates specific to [Illinois](#)<sup>4</sup> and [Suburban Cook County](#)<sup>5</sup> are also available online.

**Figure 1. Reported number of hospitalizations associated with confirmed or presumptive pandemic influenza A (H1N1), Chicago, by week of specimen collection, April 2009—April 2010**



**Figure 2. Weekly reported percent of emergency department visits attributed to influenza-like illness in two Chicago pediatric hospitals, and all Chicago hospitals serving adults (combined), August 30, 2009—April 17, 2010.**



<sup>1</sup> [https://www.chicagohan.org/c/document\\_library/get\\_file?p\\_l\\_id=28960&folderId=24345&name=DLE-95.pdf](https://www.chicagohan.org/c/document_library/get_file?p_l_id=28960&folderId=24345&name=DLE-95.pdf)

<sup>2</sup> [http://www.cityofchicago.org/city/en/depts/cdph/supp\\_info/cd\\_info/2010\\_cd\\_info\\_newsletters.html](http://www.cityofchicago.org/city/en/depts/cdph/supp_info/cd_info/2010_cd_info_newsletters.html)

<sup>3</sup> <http://www.cdc.gov/flu/weekly/>; <sup>4</sup> <http://www.idph.state.il.us/flu/fluupdate09-10.htm>; <sup>5</sup> [http://www.cookcountypublichealth.org/flu\\_current\\_situation](http://www.cookcountypublichealth.org/flu_current_situation)