



Chicago Flu Update



City of Chicago

Richard M. Daley, Mayor

March 26, 2010

Chicago Department of Public Health

Bechara Choucair, MD, Commissioner

What is the risk?

As of March 26, 2010, the risk of pandemic influenza A (H1N1) influenza infection in Chicago is low. Despite several weeks of minimal influenza activity, the [Board of Health's Emergency Reporting Requirement](#)¹ is still in effect for Chicago hospitals, as well as Chicago laboratories performing influenza subtyping tests. All Chicagoans aged six months and older are encouraged to protect themselves from infection by getting vaccinated with the pandemic influenza vaccine. Chicagoans should ask their healthcare provider or pharmacist about vaccine availability. Vaccines are available at City of Chicago Fast Track Immunization clinics and neighborhood health centers; hours and locations are available by calling 311.

Are severe cases of influenza occurring?

One hospitalization associated with pandemic influenza A (H1N1) has been reported in a Chicago resident for surveillance week 11 (March 14 – March 20, 2010) (figure 1).

How much influenza-like illness is occurring?

With 16 Chicago hospitals reporting, 4.2% of emergency department visits were due to influenza-like illness (i.e. fever of 100°F or greater, with cough or sore throat). Among nine outpatient clinics reporting for the week of March 14 – March 20, 2010, 1.4% of doctor's office visits were due to influenza-like illness. This level of activity is similar to levels seen during the same surveillance week during previous influenza seasons (figure 2).

Which influenza strains are circulating?

For the week of March 14– March 20, 2010, with seven laboratories reporting, the eight influenza A-positive specimens for which subtyping was performed were reported as presumptive pandemic influenza A (H1N1). No seasonal influenza A or influenza B strains were reported.

Where can I get more information?

[The February edition of CDPH's CD Info newsletter](#)² provides supplemental information about the surveillance and investigation of the 2009 pandemic in Chicago. The Centers for Disease Control and Prevention's [FluView](#)³ report provides national updates and trends related to the intensity of influenza activity across the United States, as well as detailed information on antiviral resistance, severity of illness, and other topics. Updates specific to [Illinois](#)⁴ and [Suburban Cook County](#)⁵ are also available online.

Figure 1. Reported number of hospitalizations associated with confirmed or presumptive pandemic influenza A (H1N1), Chicago, by week of specimen collection, April 2009—March 20, 2010

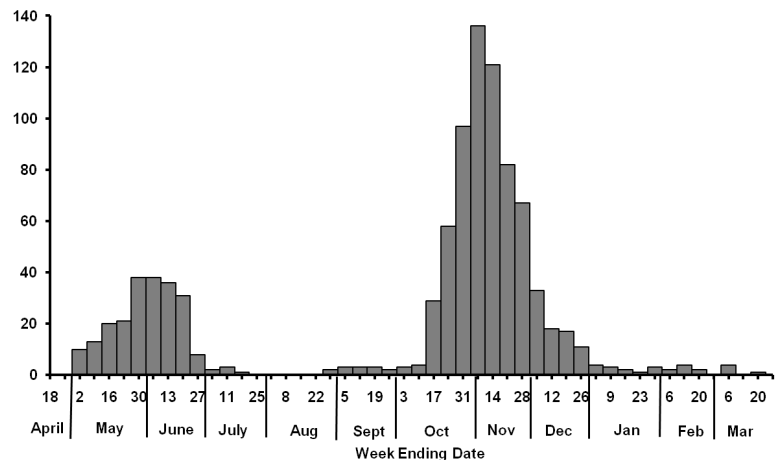
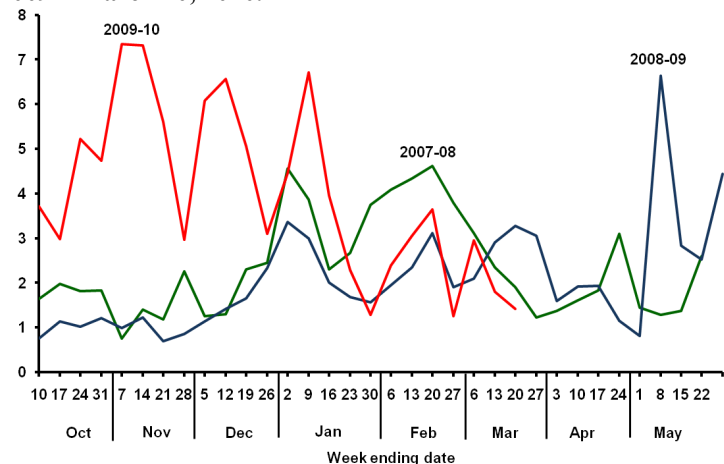


Figure 2. Weekly reported percent of emergency department visits attributed to influenza-like illness in two Chicago pediatric hospitals, and all Chicago hospitals serving adults (combined), August 30, 2009—March 20, 2010.



¹ https://www.chicagohan.org/c/document_library/get_file?p_l_id=28960&folderId=24345&name=DLEF-95.pdf

² http://www.cityofchicago.org/content/dam/city/depts/cdp/infectedious_disease/Communicable_Disease/IP_CDInfo_FEB2010_PandemicFlu.pdf

³ <http://www.cdc.gov/flu/weekly/>; ⁴ <http://www.idph.state.il.us/flu/fluupdate09-10.htm>; ⁵ http://www.cookcountypublichealth.org/flu_current_situation