



Protecting Chicago: Metrics Update

June 4, 2020

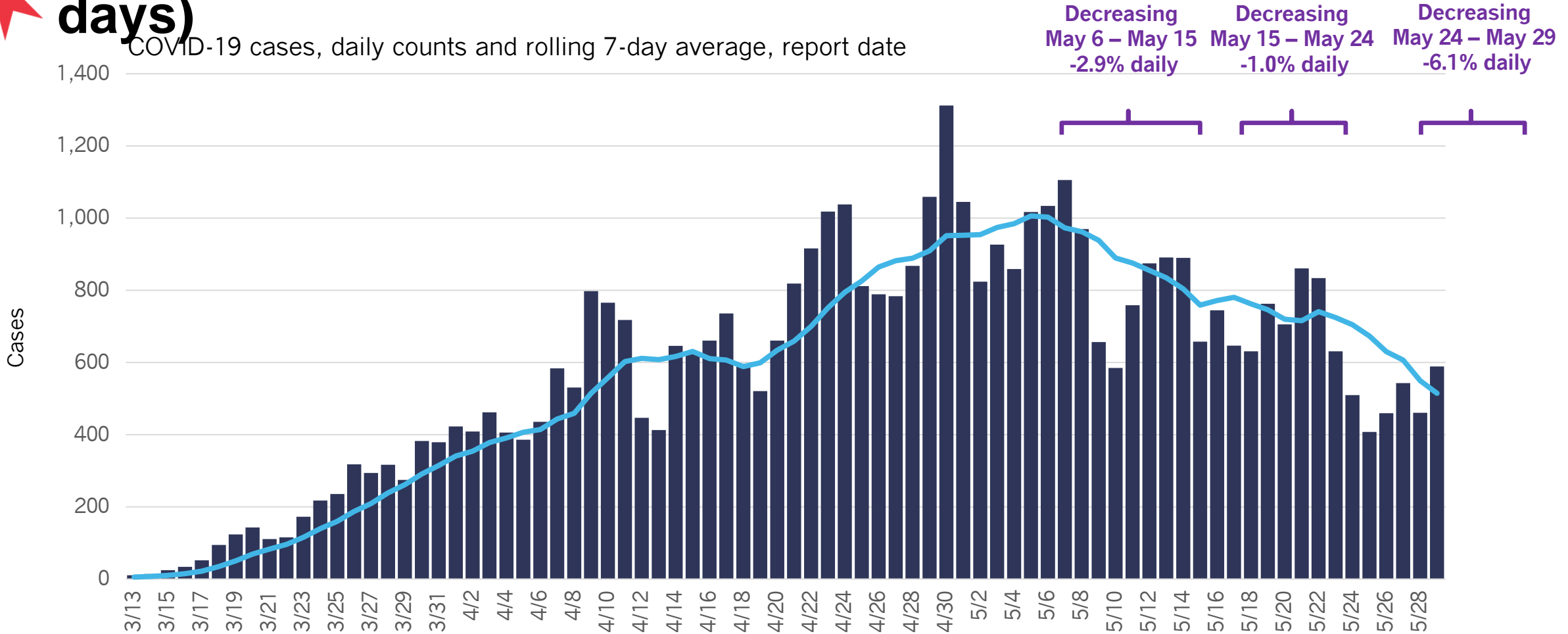


COVID-19 Cases

CAUTIOUS OPTIMISM



New daily COVID-19 cases still high but decreasing (23 days)



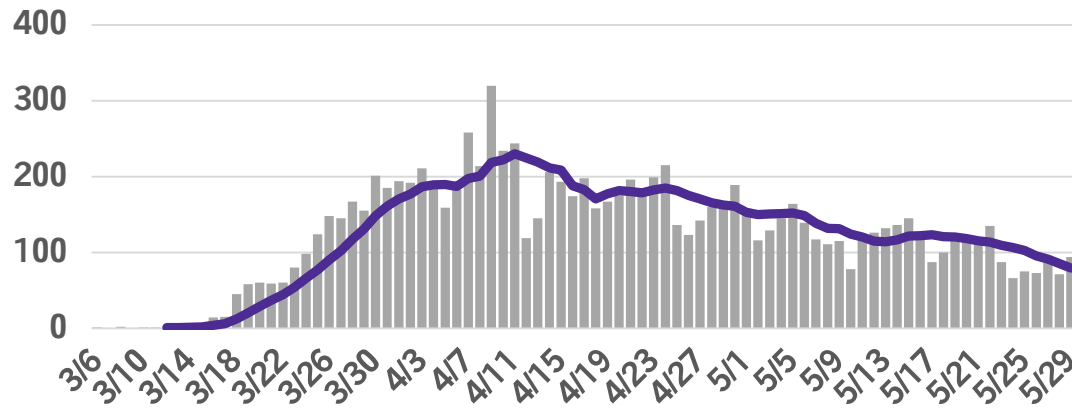
Daily COVID-19 cases in Chicago residents using date case reported by laboratory: Illinois National Electronic Disease Surveillance System

CAUTIOUS OPTIMISM

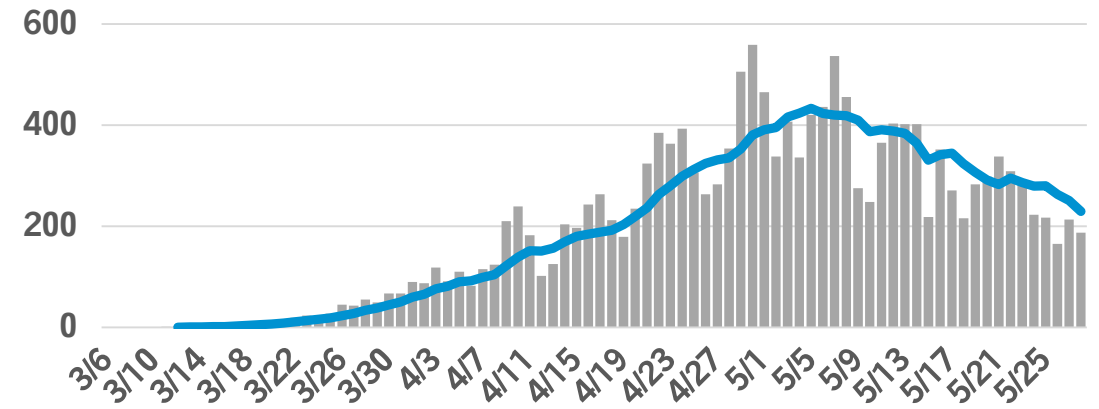
New cases decreasing across all race-ethnicity groups



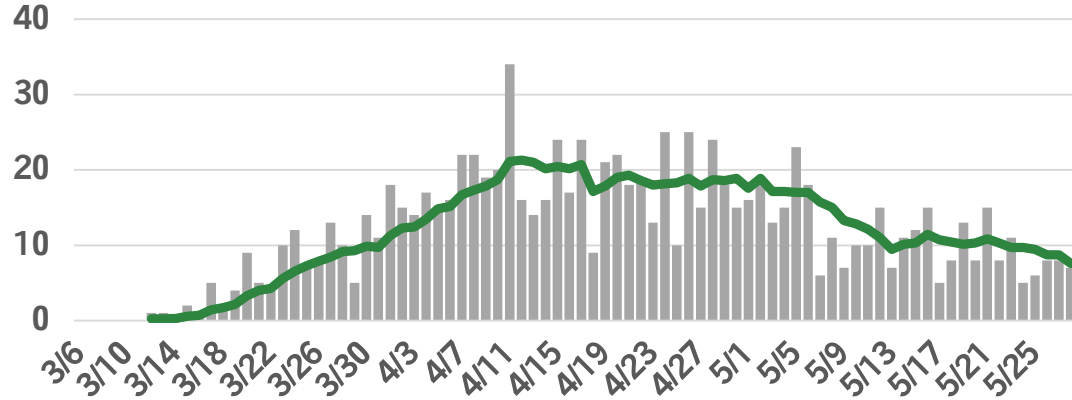
Black, non-Latinx



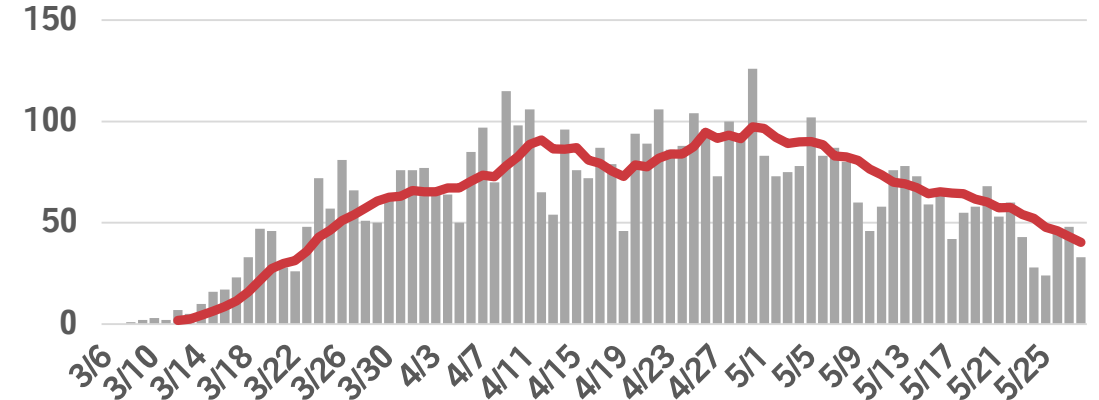
Latinx



Asian, non-Latinx



White, non-Latinx

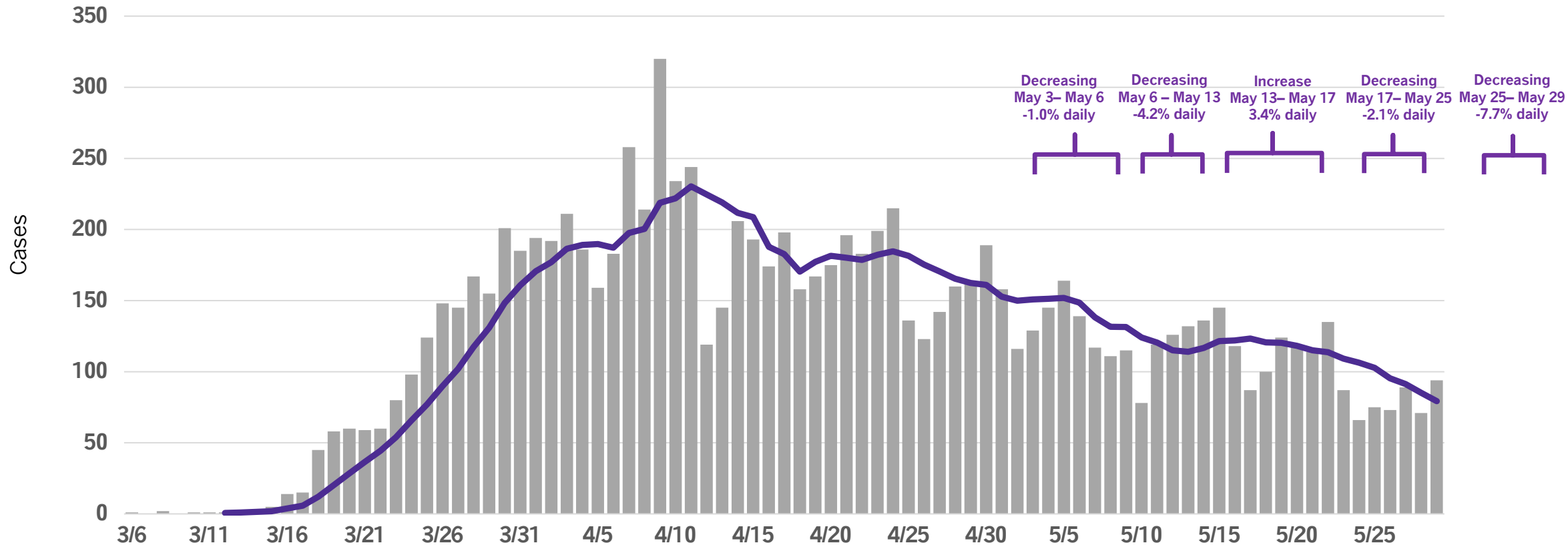


Daily coronavirus 2019 (COVID-19) cases reported for Chicago residents with known laboratory report date. Note, there was one case of COVID-19 reported in January 2020 that is not included in the daily counts. As of 05/29/2020 there are 10,771 cases with unknown race/ethnicity out of 44,637 total cases.

CAUTIOUS OPTIMISM

New Black, non-Latinx cases decreasing (34 days)

COVID-19 cases among Black, non-Latinx residents, daily counts and rolling 7-day average,

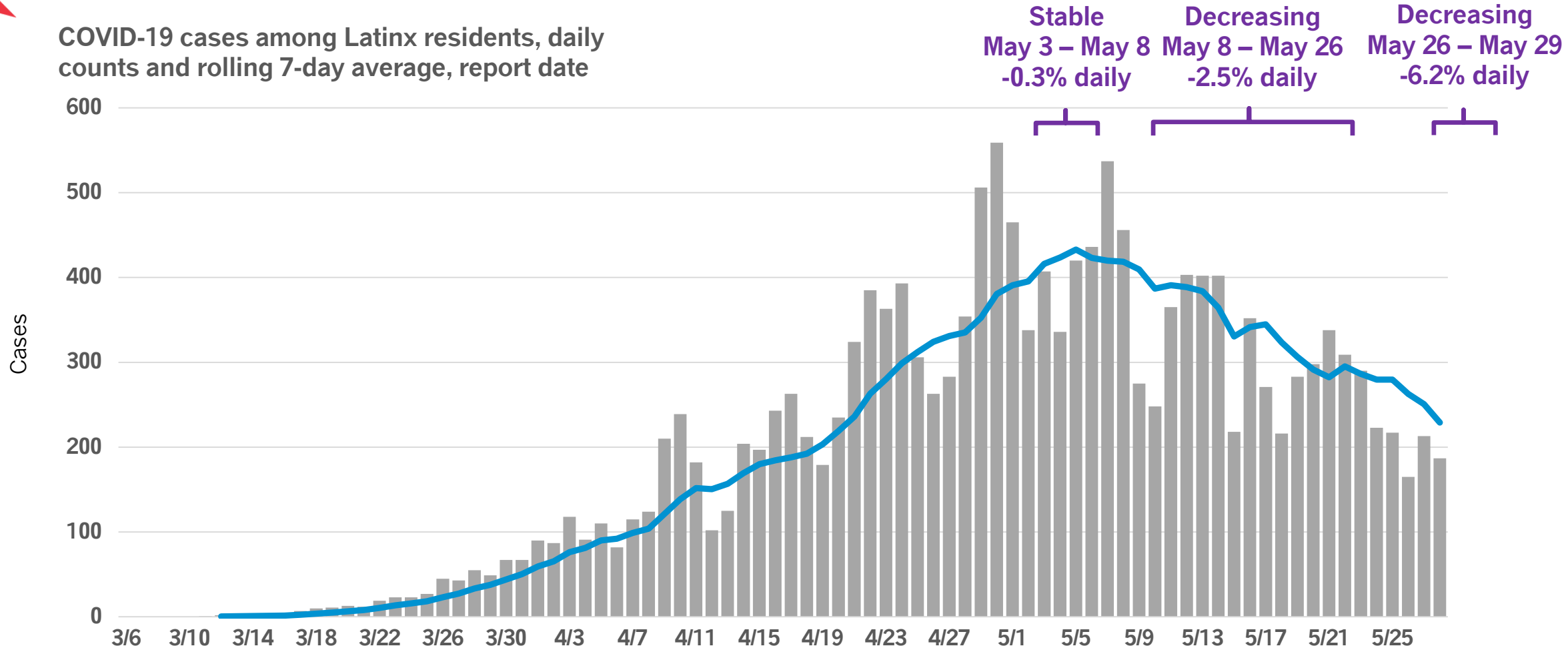


Daily coronavirus 2019 (COVID-19) cases reported for Chicago residents with known laboratory report date. Note, there was one case of COVID-19 reported in January 2020 that is not included in the daily counts. As of 05/29/2020 there are 10,771 cases with unknown race/ethnicity out of 44,637 total cases.

CAUTIOUS OPTIMISM

New Latinx cases high but decreasing (24 days)

COVID-19 cases among Latinx residents, daily counts and rolling 7-day average, report date

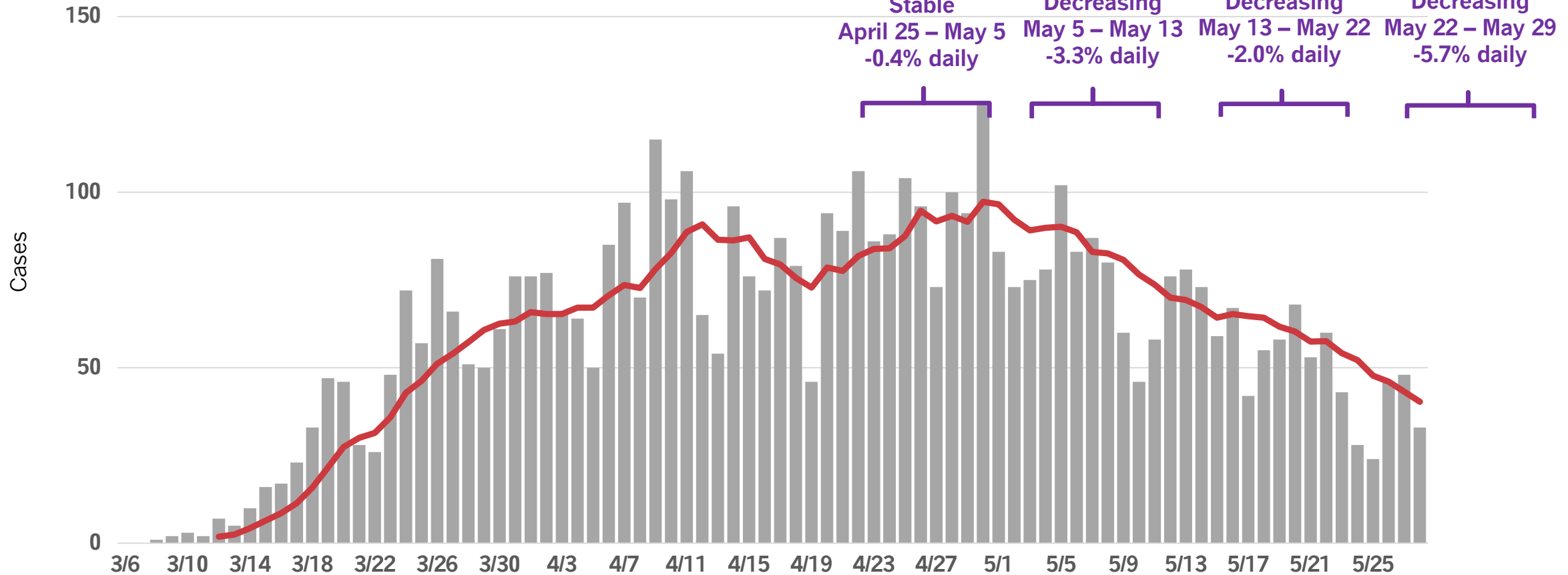


Daily coronavirus 2019 (COVID-19) cases reported for Chicago residents with known laboratory report date. Note, there was one case of COVID-19 reported in January 2020 that is not included in the daily counts. As of 05/29/2020 there are 10,771 cases with unknown race/ethnicity out of 44,637 total cases.

CAUTIOUS OPTIMISM

New White, non-Latinx cases decreasing (33 days)

COVID-19 cases among white, non-Latinx residents, daily counts and rolling 7-day average, report date

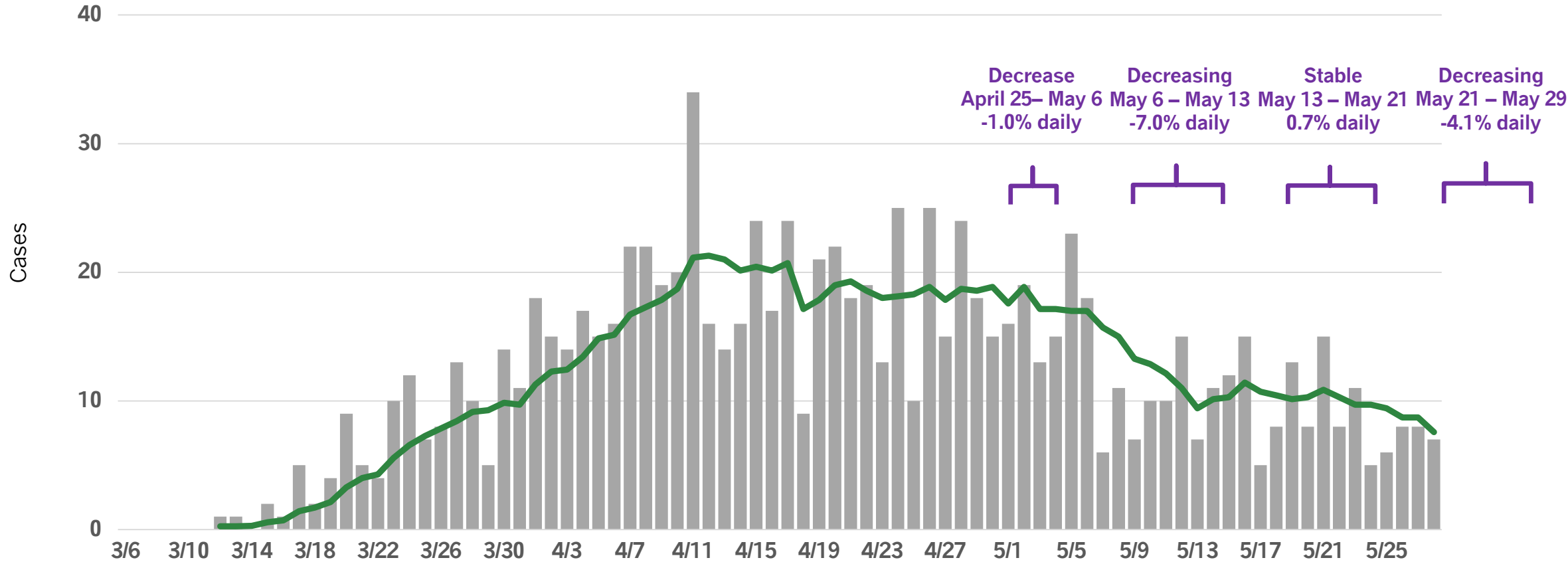


Daily coronavirus 2019 (COVID-19) cases reported for Chicago residents with known laboratory report date. Note, there was one case of COVID-19 reported in January 2020 that is not included in the daily counts. As of 05/29/2020 there are 10,771 cases with unknown race/ethnicity out of 44,637 total cases.

CAUTIOUS OPTIMISM

New Asian, non-Latinx cases stable or decreasing (34 days)

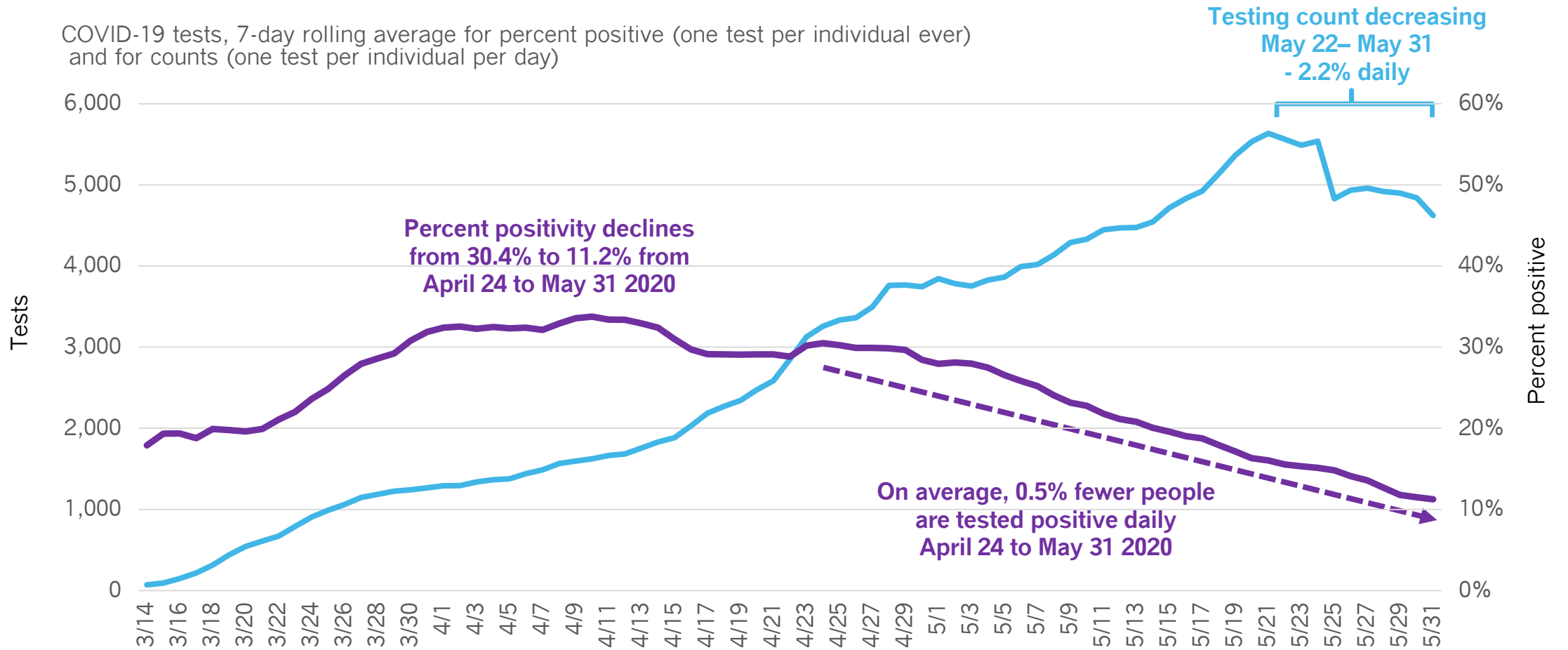
COVID-19 cases among Asian, non-Latinx residents, daily counts and rolling 7-day average, report date



Daily coronavirus 2019 (COVID-19) cases reported for Chicago residents with known laboratory report date. Note, there was one case of COVID-19 reported in January 2020 that is not included in the daily counts. As of 05/29/2020 there are 10,771 cases with unknown race/ethnicity out of 44,637 total cases.

CAUTIOUS OPTIMISM

Percent positivity now 11.2% and decreasing, with testing high but recent decreases seen



For percent positivity: Every individual tested is counted once. The first positive test is the date used for the test result. If the individual has only negative tests, the date of the first negative test is used. (INEDSS) For 7-day rolling average of counts: All tests performed on Chicago residents as reported by electronic lab reporting (IDPH).

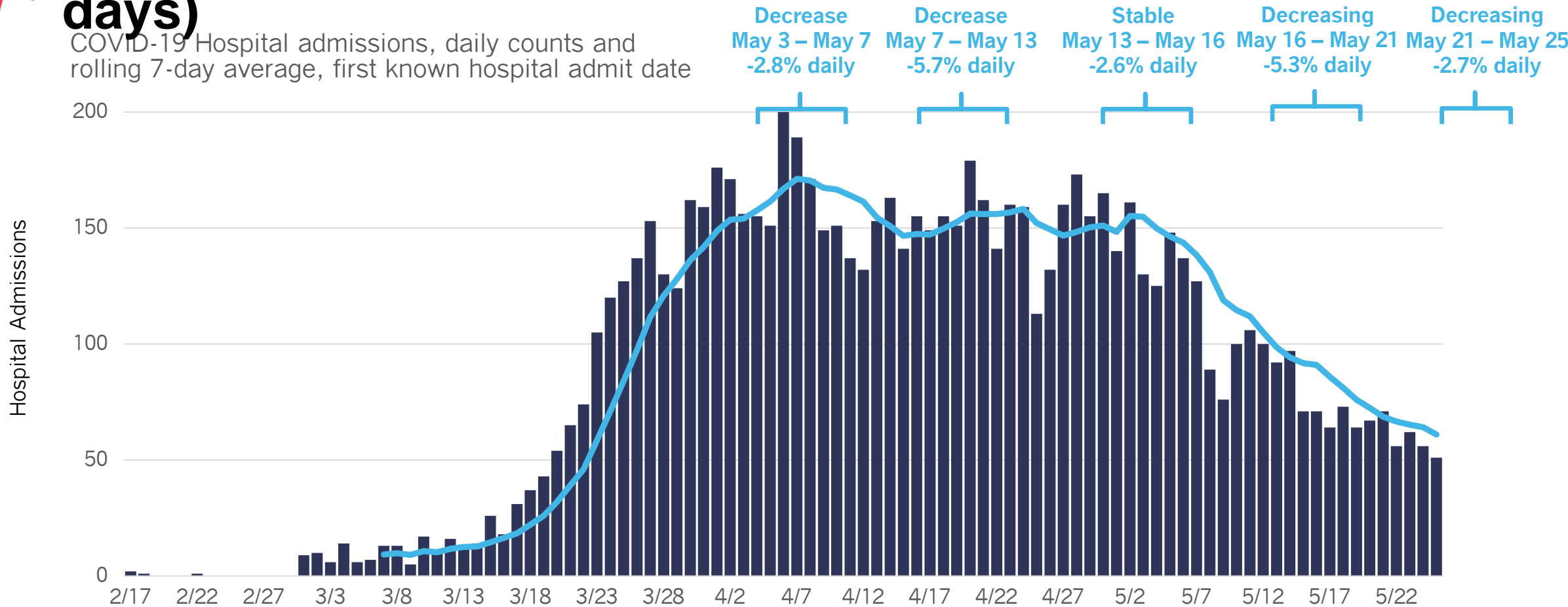


COVID-19 Severe Outcomes

CAUTIOUS OPTIMISM

COVID-19 hospital admissions stable or decreasing (22 days)

COVID-19 Hospital admissions, daily counts and rolling 7-day average, first known hospital admit date

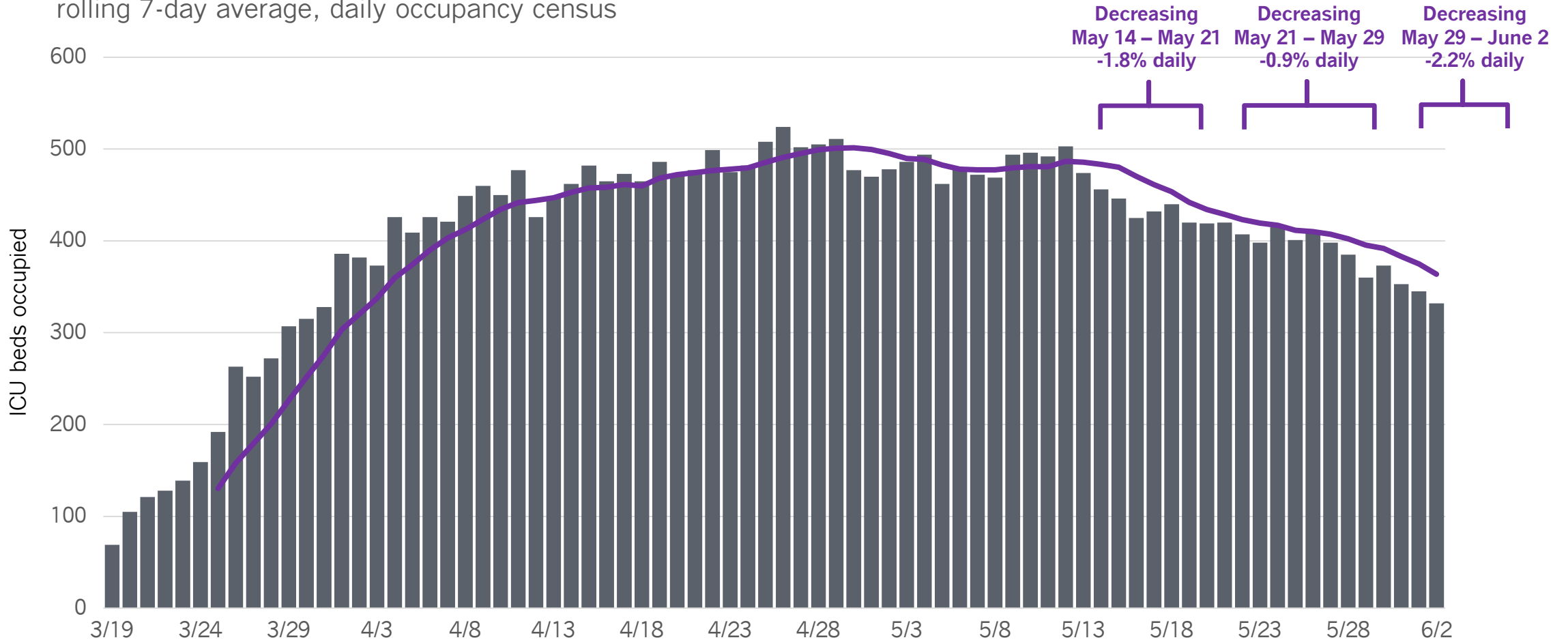


Hospitalizations are reported to CDPH by hospitals into I-NEDSS and ESSENCE and self-reported by patients via an online survey. Cases who are not indicated to have been hospitalized across any of the three data sources are assumed to not have been hospitalized. Out of 9,204 total hospital admissions, 193 are missing a hospital admit date. One record with a hospital admit date from January 2020 is excluded from this chart.

CAUTIOUS OPTIMISM

COVID-19 ICU occupancy decreasing (19 days)

COVID-19 ICU beds occupied, daily counts and rolling 7-day average, daily occupancy census



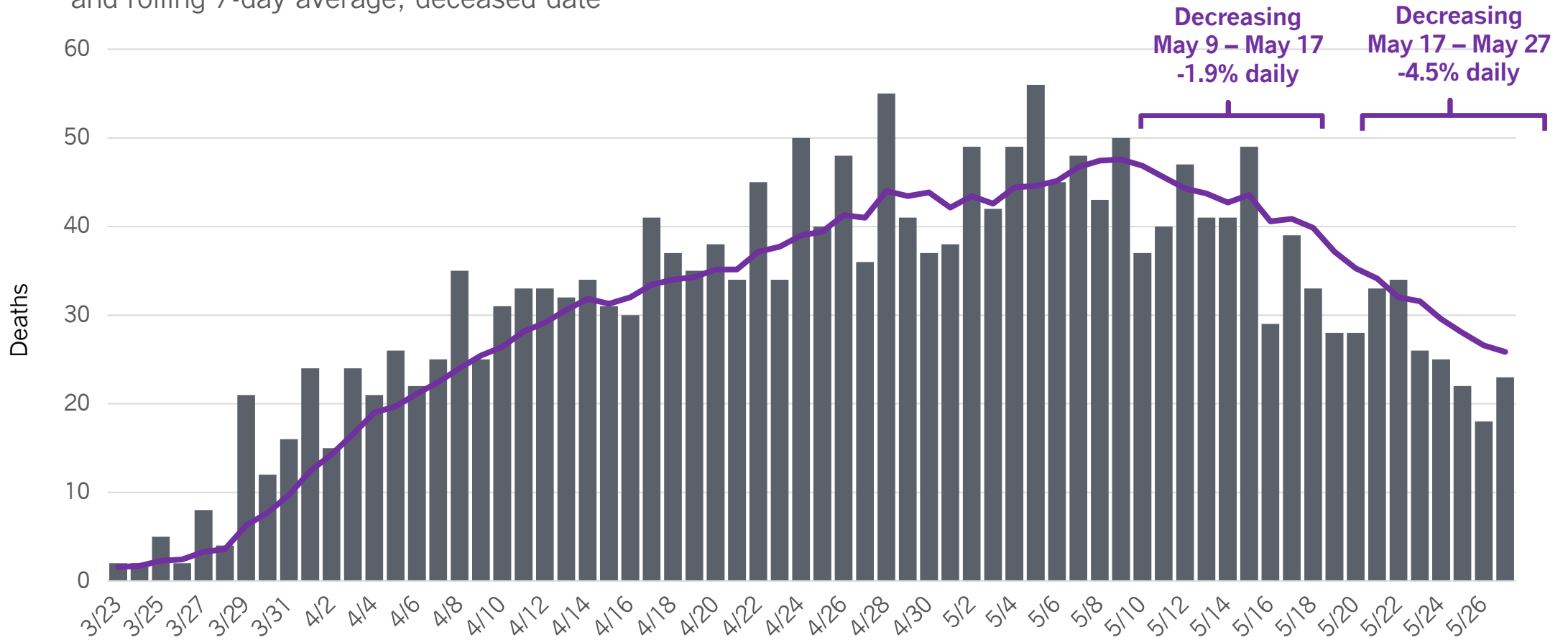
Includes COVID19 confirmed and suspected cases occupying adult or pediatric ICU beds. Includes all Chicago hospitals. Hospitals report ICU occupancy daily to CDPH via EMResource, beginning March 19. Includes Chicago and non-Chicago residents.

CAUTIOUS OPTIMISM

COVID-19 deaths decreasing (18 days)



COVID-19 deaths, daily counts
and rolling 7-day average, deceased date



Daily COVID-19 deaths reported for Chicago residents with known death date. Data source: INEDSS.



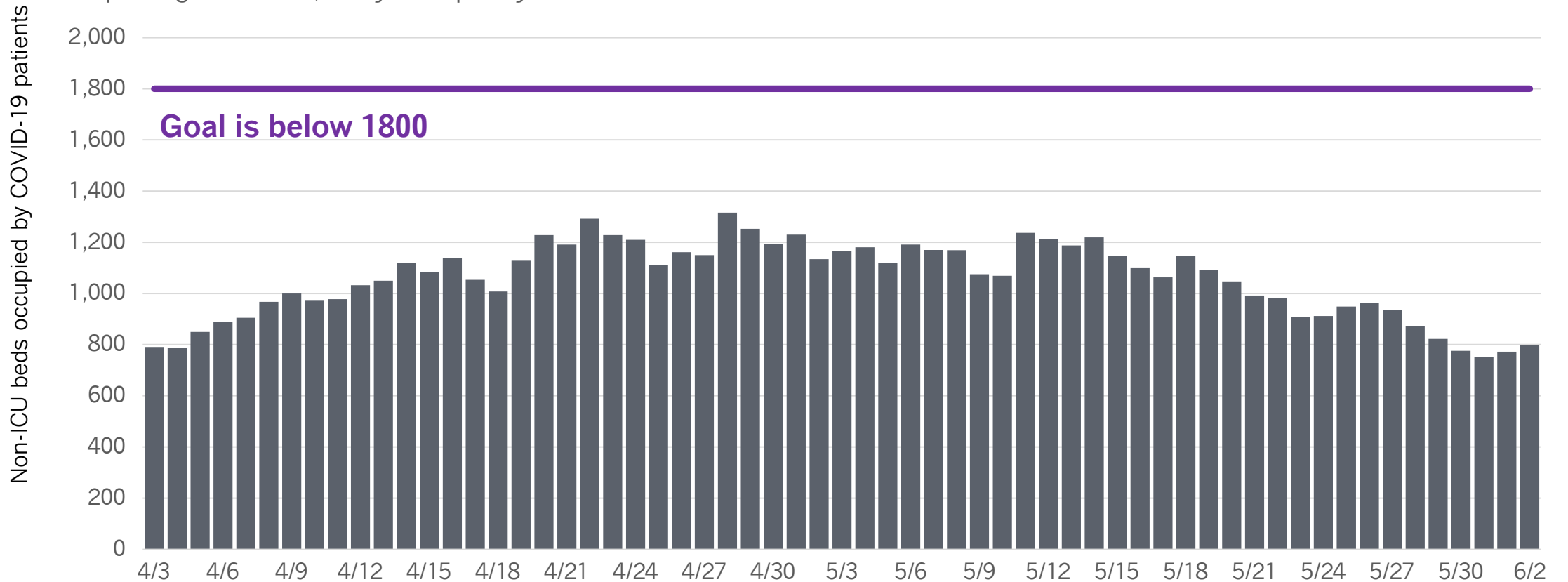
Hospital Capacity

CAUTIOUS OPTIMISM



Hospital capacity adequate: <1,800 non-ICU beds occupied by patients with COVID-19

COVID-19 acute/non-ICU beds occupied, daily counts and reopening threshold, daily occupancy census



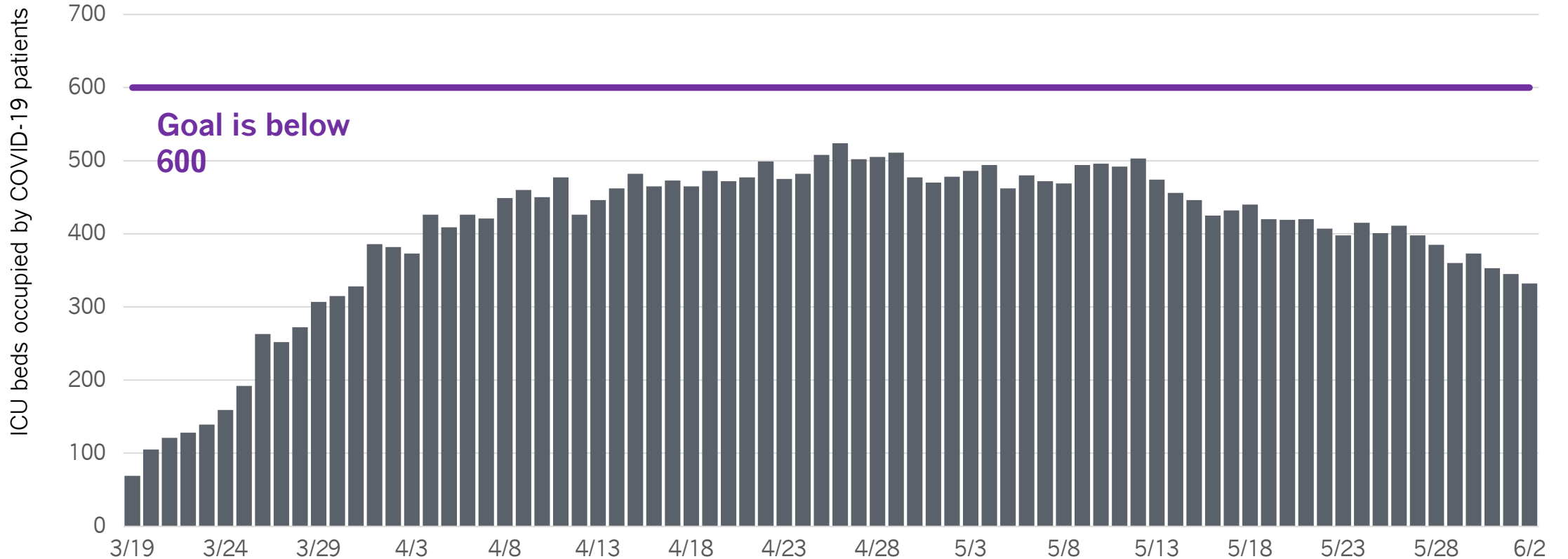
Includes all Chicago hospitals. Hospitals report daily to CDPH via EMResource, beginning April 3 (acute non-ICU occupancy). Acute non-ICU bed counts include burn, emergency department, med/surg, other, pediatrics and psychiatry beds in Chicago hospitals. Includes Chicago and non-Chicago residents. Includes confirmed and suspected COVID-19 cases.

CAUTIOUS OPTIMISM



Hospital capacity adequate: <600 ICU beds occupied by patients with COVID-19

COVID-19 ICU beds occupied, daily counts and reopening threshold, daily occupancy census



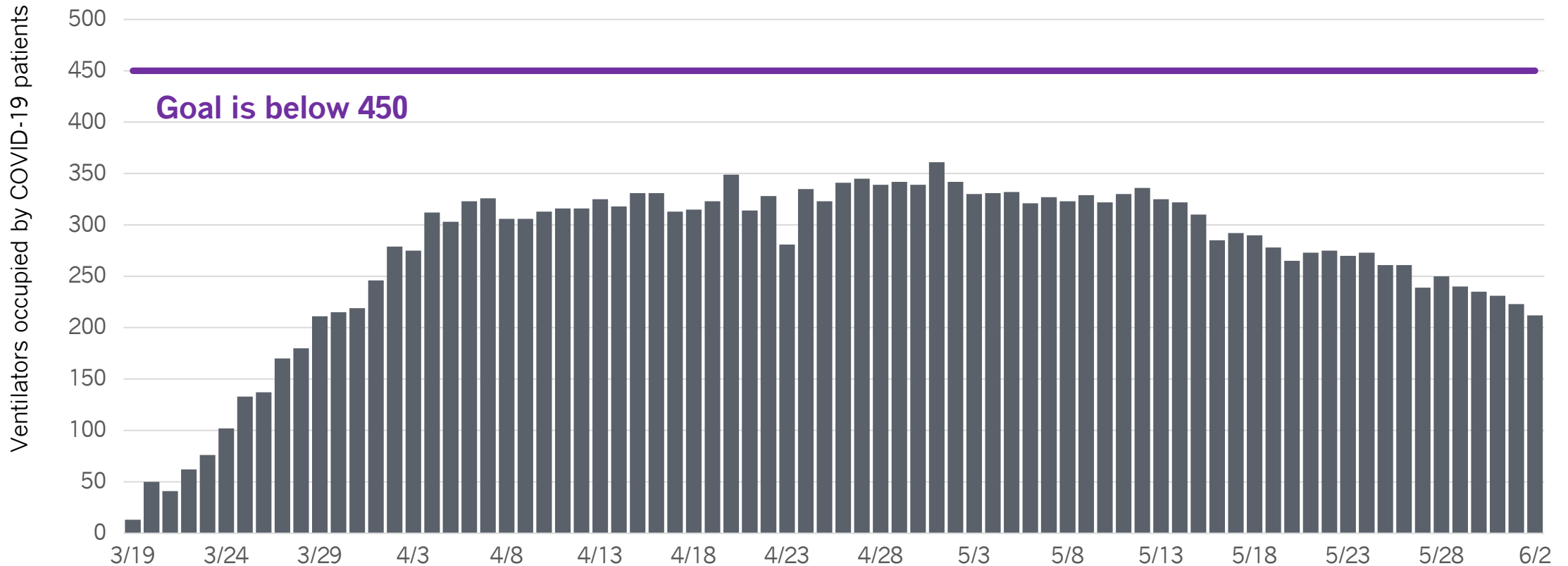
Includes all Chicago hospitals. Hospitals report daily to CDPH via EMResource, beginning March 19. ICU bed count includes all adult and pediatric ICU beds in Chicago hospitals. Includes Chicago and non-Chicago residents. Includes confirmed and suspected COVID-19 cases. **Note:** Beginning 4/24/2020, the definition of ICU status changed as requested by HHS.

CAUTIOUS OPTIMISM

Hospital capacity adequate: <450 patients with COVID-19 on ventilators



COVID-19 ventilators in use, daily counts and reopening threshold, daily utilization census



Includes all Chicago hospitals. Hospitals report daily to CDPH via EMResource, beginning March 19. Includes Chicago and non-Chicago residents. Includes confirmed and suspected COVID-19 cases. Beginning 4/24/2020, ventilator counts include all full-functioning mechanical ventilators, BIPAP, anesthesia machines and portable/transport ventilators.



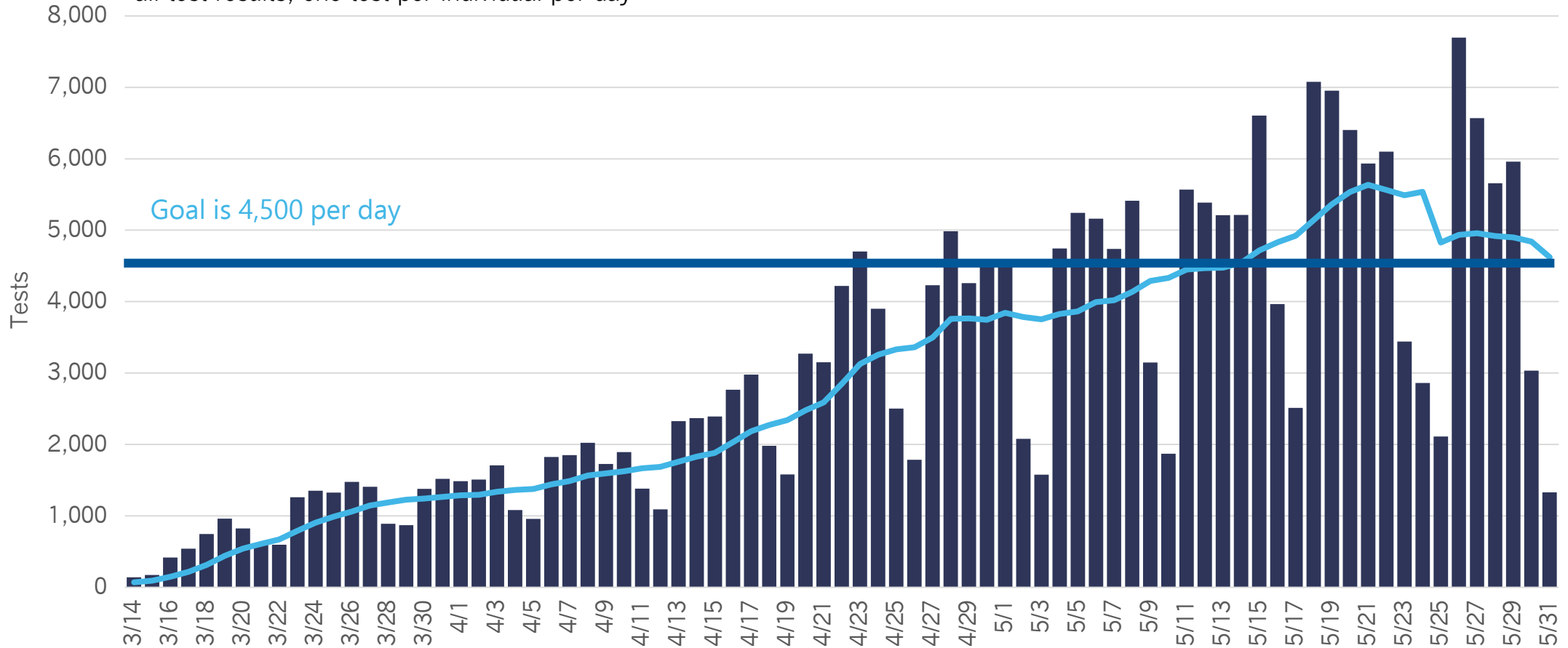
Testing Capacity and Positivity

CAUTIOUS OPTIMISM

Testing capacity high: now conducting 4,722 tests per day



COVID-19 tests, daily count and 7-day moving average, all test results, one test per individual per day



All COVID-19 tests performed on Chicago residents per day as reported by electronic lab reporting from IDPH. 4,500 tests per day represents the capacity to test 5% of Chicago residents per month.

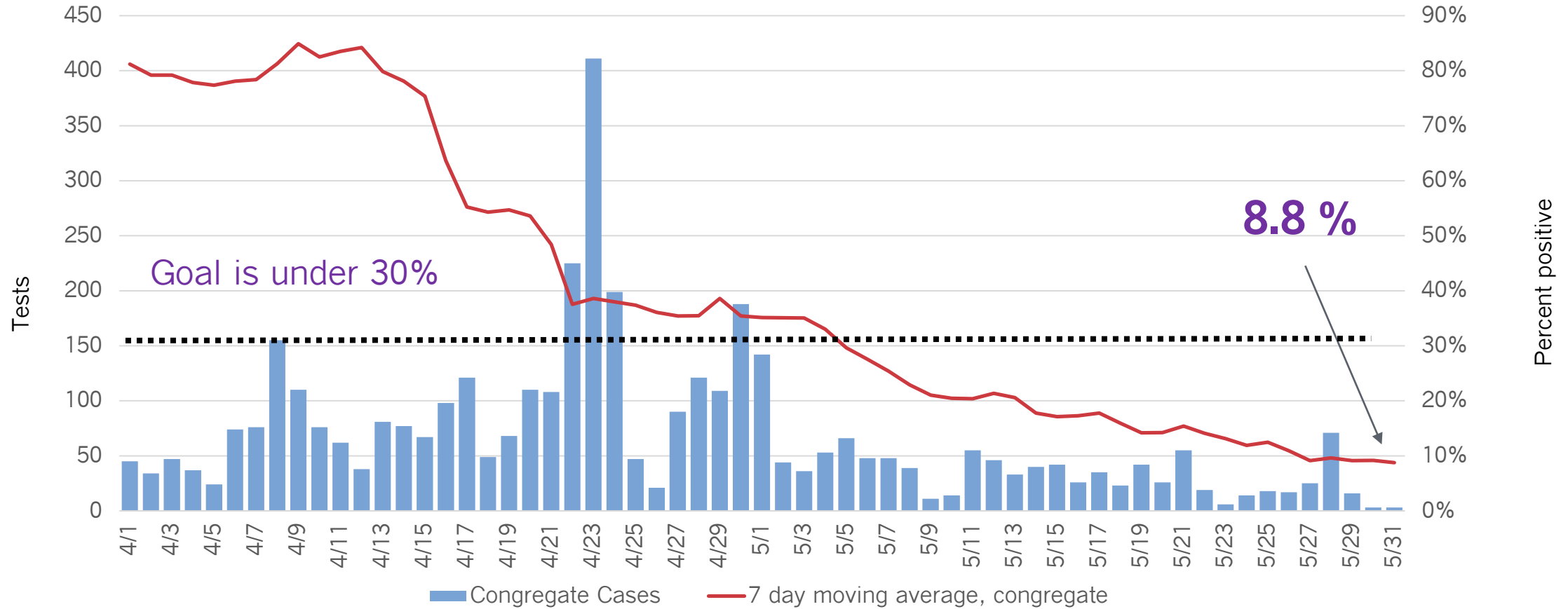
CAUTIOUS OPTIMISM

Percent positivity: 8.8% positive in congregate settings



settings

Percent positivity in congregate settings, daily count positive and percent positive, 7-day moving average, first positive test (or first negative test if never-positive)

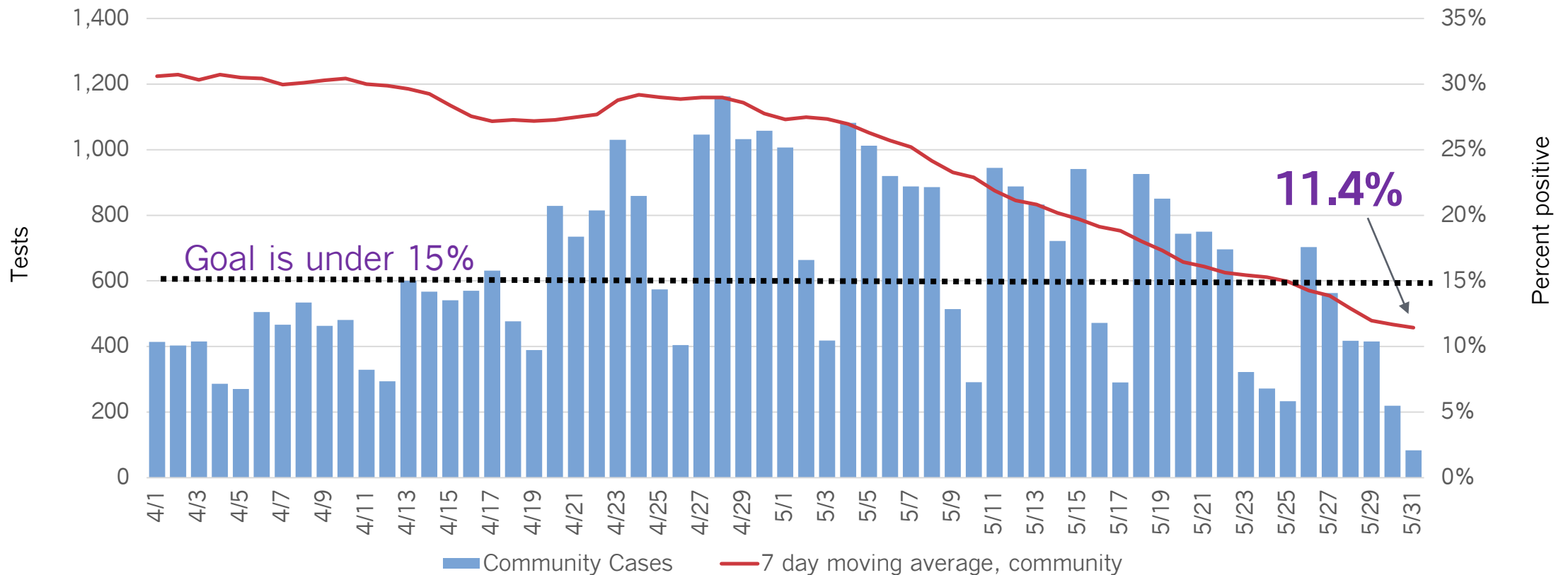


Congregate settings include skilled nursing facilities (nursing homes); correctional facilities (but not MCC Chicago); and homeless shelters in Chicago. Every individual tested is counted once. The first positive test is the date used for the test result. If the individual has only negative tests, the date of the first negative test is used.

CAUTIOUS OPTIMISM

Percent positivity decreasing: now 11.4% positive in community settings

COVID-19 tests in community settings, daily count positive and percent positive, 7-day moving average, first positive test (or first negative test if never-positive)



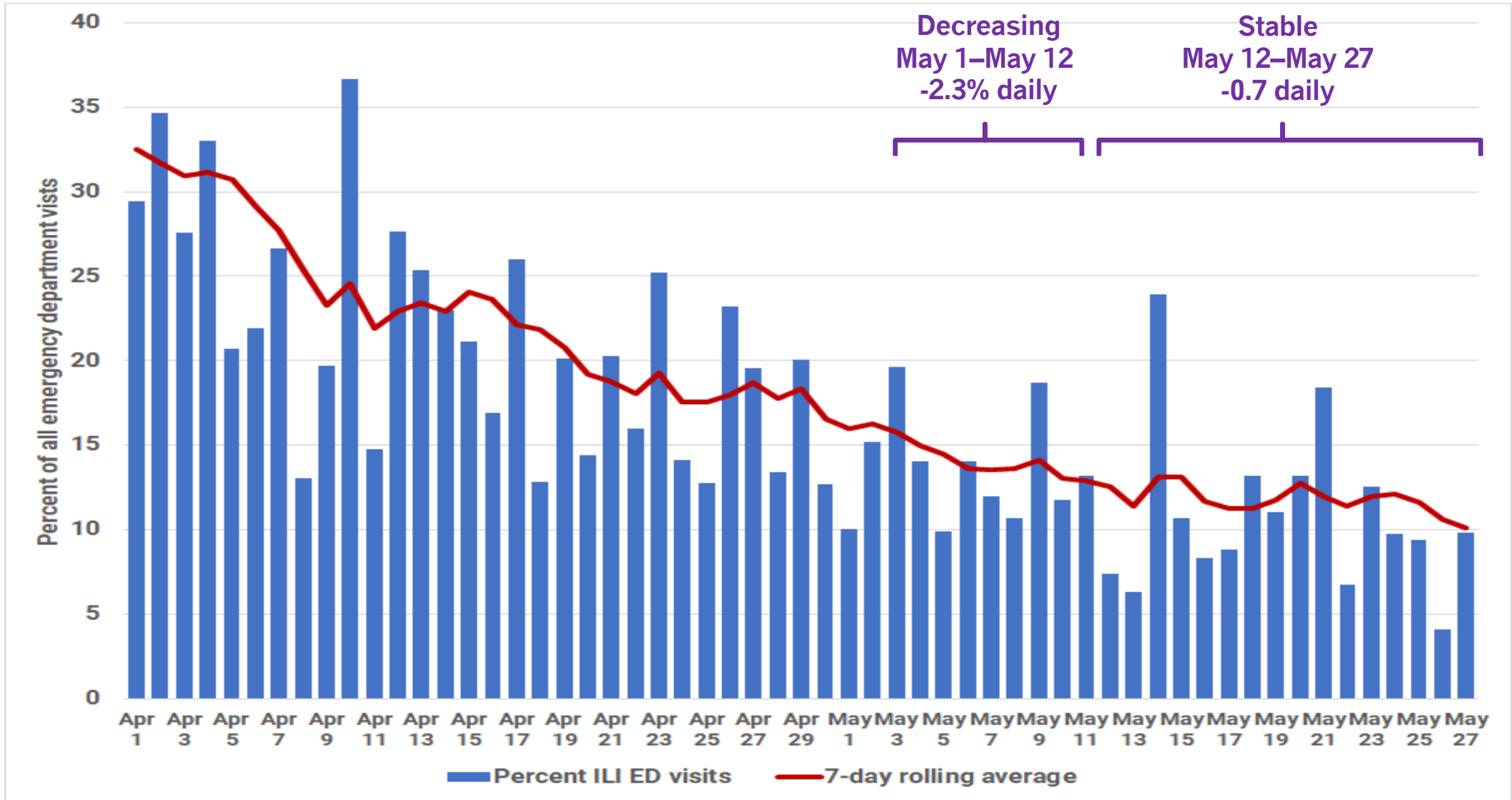
Community settings include all tests in non-congregate settings. Every individual tested is counted once. The first positive test is the date used for the test result. If the individual has only negative tests, the date of the first negative test is used.



Emergency Department Visits

CAUTIOUS OPTIMISM

ED visits for influenza-like illnesses stable/decreasing (34 days)

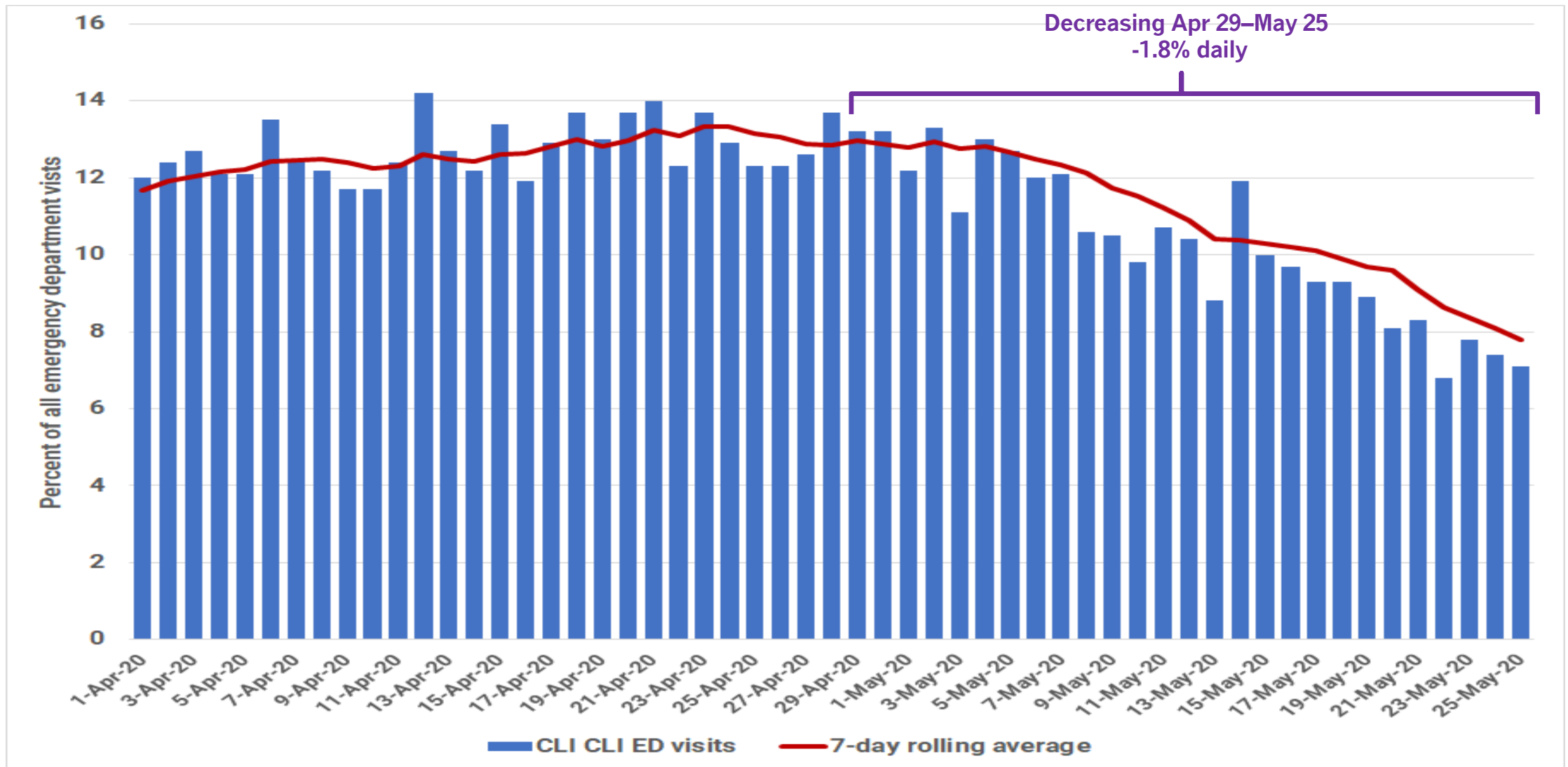


ILI: Influenza-like illness. Percentage of all emergency department visits reported with influenza-like illness symptoms among Chicago residents.

Data Source: Illinois Hospital Emergency Departments reporting to CDPH through the National Syndromic Surveillance Project.

CAUTIOUS OPTIMISM

ED visits for COVID-like illness decreasing (26 days)



Percentage of all emergency department visits reported with COVID-like symptoms among Chicago residents. Trend analysis only assess the last 27 days. Data Source: Illinois Hospital Emergency Departments reporting to CDPH through the National Syndromic Surveillance Project.