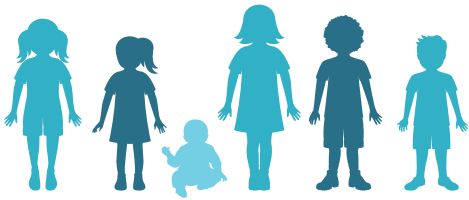


# MEASLES

## IT ISN'T JUST A LITTLE RASH



Measles can be dangerous, especially for babies and young children.

Measles symptoms typically include:



**High fever**  
(may spike to more than 104°F)



**Cough**



**Runny nose**



**Red and/or watery eyes**



**Rash**  
(breaks out 3-5 days after symptoms begin)

## Measles can be serious.

Measles can cause severe health complications, including pneumonia, swelling of the brain (encephalitis) and death.



**1 out of 5** people who get measles will be hospitalized.



**1 out of every 20** children with measles will get pneumonia, the most common cause of death from measles in young children.



**1 out of every 1,000** people with measles will develop brain swelling, which may lead to brain damage.



**1 to 3 out of 1,000** people with measles will die.

### Long-term complications

A very rare, but deadly disease called subacute sclerosing panencephalitis can develop 7 to 10 years after a person has recovered from measles.



## You have the power to protect your child.

Provide your children with safe and long-lasting protection against measles by making sure they get the measles-mumps-rubella (MMR) vaccine. Talk to your healthcare provider.



[www.cdc.gov/measles](http://www.cdc.gov/measles)