



Protecting Chicago: Phase III Re-Opening Metrics Update

June 12, 2020



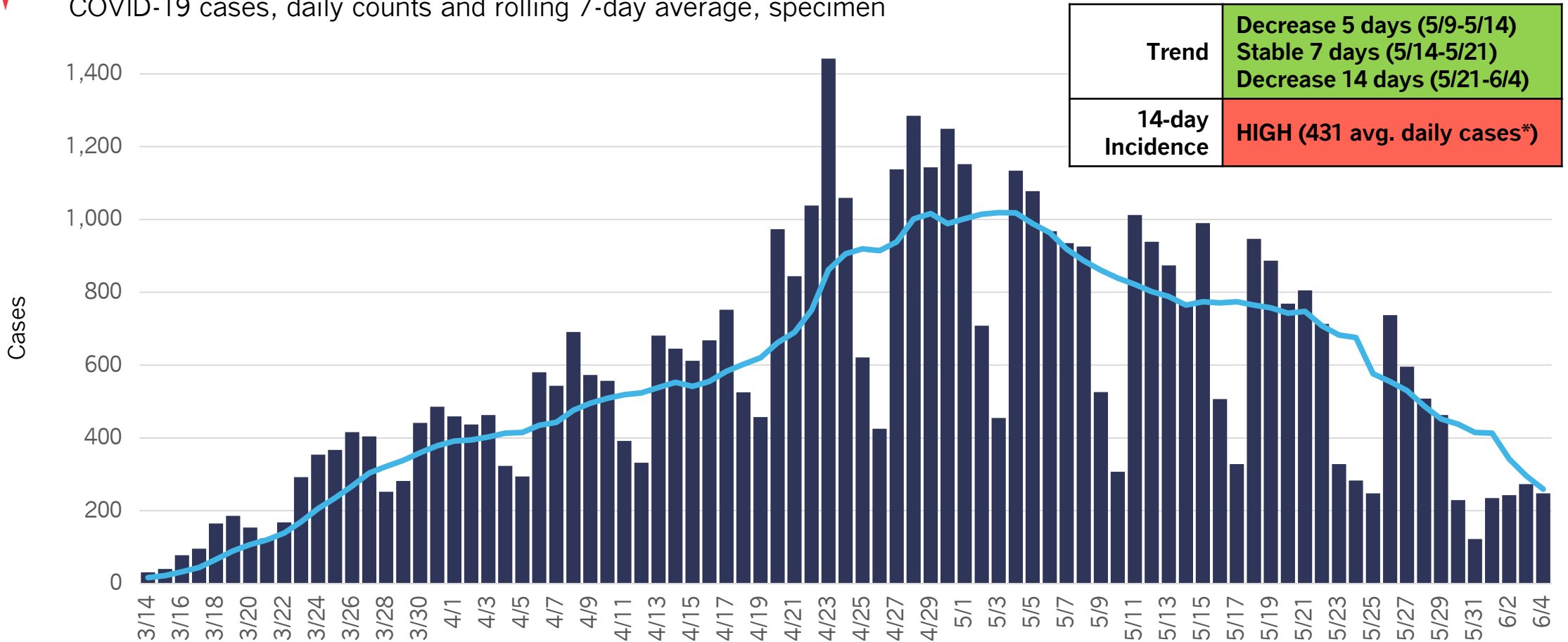
COVID-19 Confirmed Cases

GO: CAUTIOUS PROGRESS

New COVID-19 cases high but stable or decreasing >28 days



COVID-19 cases, daily counts and rolling 7-day average, specimen



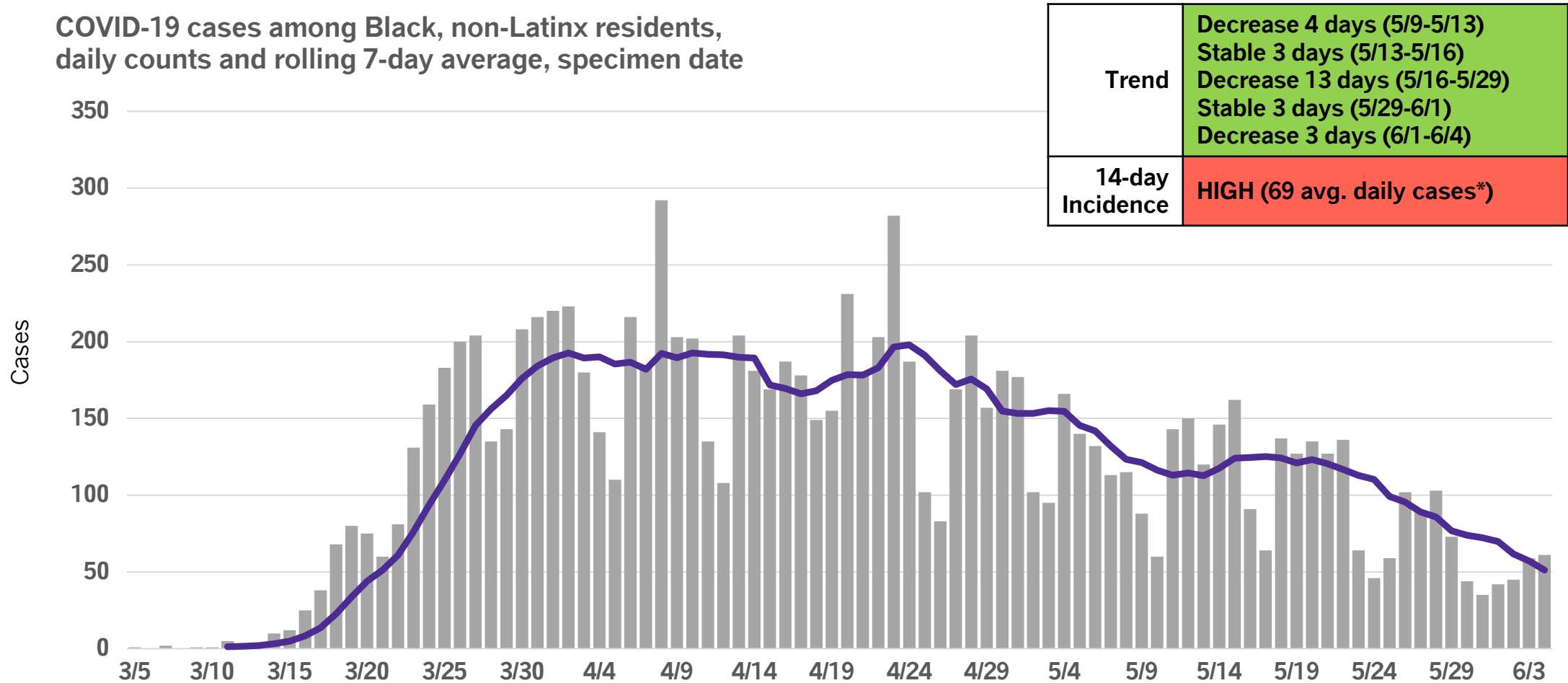
Daily COVID-19 cases with known specimen report date. *14-day incidence is calculated by summing all new cases in the most recent 14 day period and dividing by 14 days to find an average. Incidence gating rank is determined using 14-day average incidence/100,000 population. The gating rank categories are defined as follows. LOW (1-10); MODERATE (11-50); MODERATELY HIGH (51-99); HIGH (100+).

GO: CAUTIOUS PROGRESS

New Black, non-Latinx cases stable or decreasing >28 days



COVID-19 cases among Black, non-Latinx residents, daily counts and rolling 7-day average, specimen date



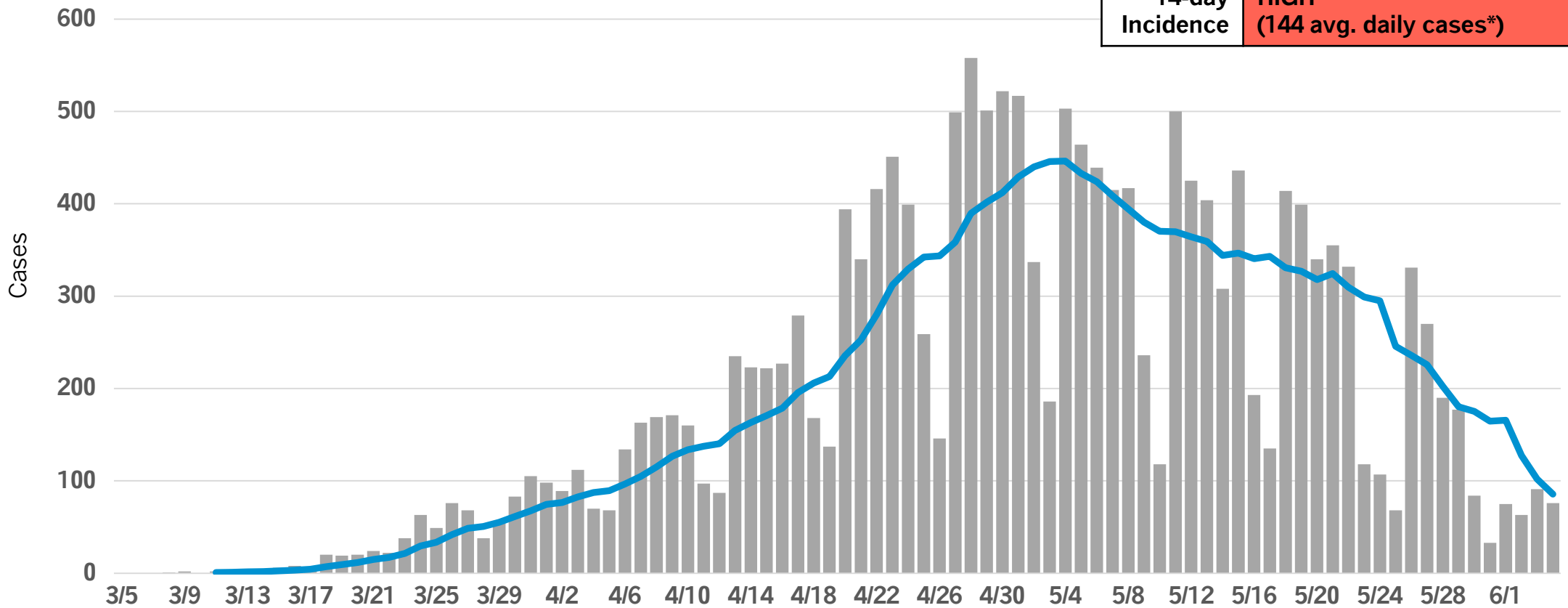
Daily COVID-19 cases with known specimen report date and race/ethnicity information. *14-day incidence is calculated by summing all new cases in the most recent 14 day period and dividing by 14 days to find an average. Incidence gating rank is determined using 14-day average incidence/100,000 population. The gating rank categories are defined as follows. LOW (1-10); MODERATE (11-50); MODERATELY HIGH (51-99); HIGH (100+).

GO: CAUTIOUS PROGRESS

New Latinx cases high but decreasing > 28 days



COVID-19 cases among Latinx residents, daily counts and rolling 7-day average, specimen date



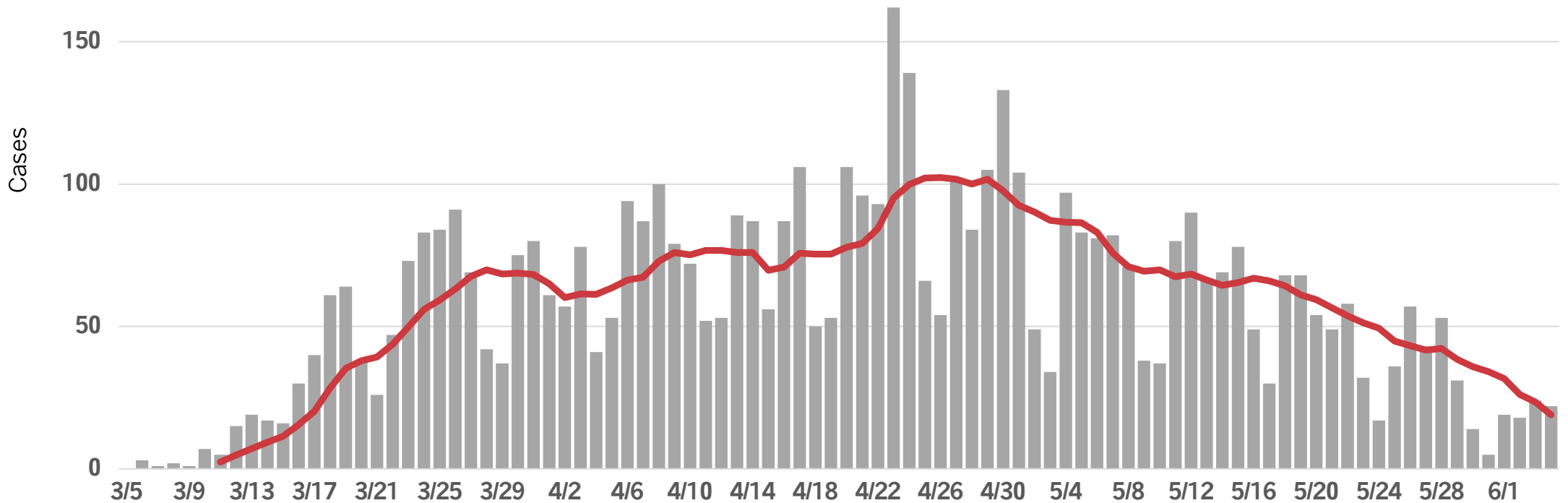
Daily COVID-19 cases with known specimen report date and race/ethnicity information. *14-day incidence is calculated by summing all new cases in the most recent 14 day period and dividing by 14 days to find an average. Incidence gating rank is determined using 14-day average incidence/100,000 population. The gating rank categories are defined as follows. LOW (1-10); MODERATE (11-50); MODERATELY HIGH (51-99); HIGH (100+).

GO: CAUTIOUS PROGRESS

New White, non-Latinx cases decreasing 26 days

COVID-19 cases among white, non-Latinx residents, daily counts and rolling 7-day average, specimen date

200



Daily COVID-19 cases with known specimen report date and race/ethnicity information. *14-day incidence is calculated by summing all new cases in the most recent 14 day period and dividing by 14 days to find an average. Incidence gating rank is determined using 14-day average incidence/100,000 population. The gating rank categories are defined as follows. LOW (1-10); MODERATE (11-50); MODERATELY HIGH (51-99); HIGH (100+).

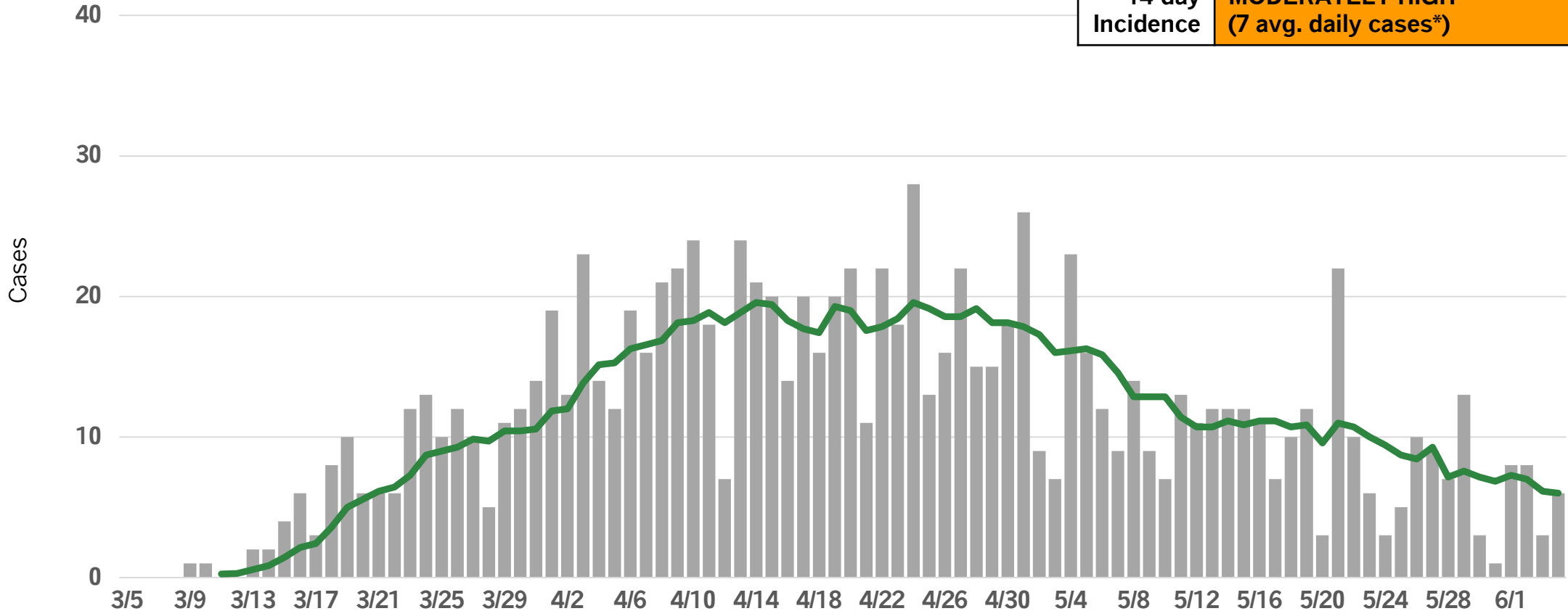
GO: CAUTIOUS PROGRESS

New Asian, non-Latinx cases decreasing 26 days



COVID-19 cases among Asian, non-Latinx residents, daily counts and rolling 7-day average, specimen date

Trend	Decrease 26 days (5/9-6/4)
14-day Incidence	MODERATELY HIGH (7 avg. daily cases*)



Daily COVID-19 cases with known specimen report date and race/ethnicity information. *14-day incidence is calculated by summing all new cases in the most recent 14 day period and dividing by 14 days to find an average. Incidence gating rank is determined using 14-day average incidence/100,000 population. The gating rank categories are defined as follows. LOW (1-10); MODERATE (11-50); MODERATELY HIGH (51-99); HIGH (100+).



COVID-19 Severe Outcomes

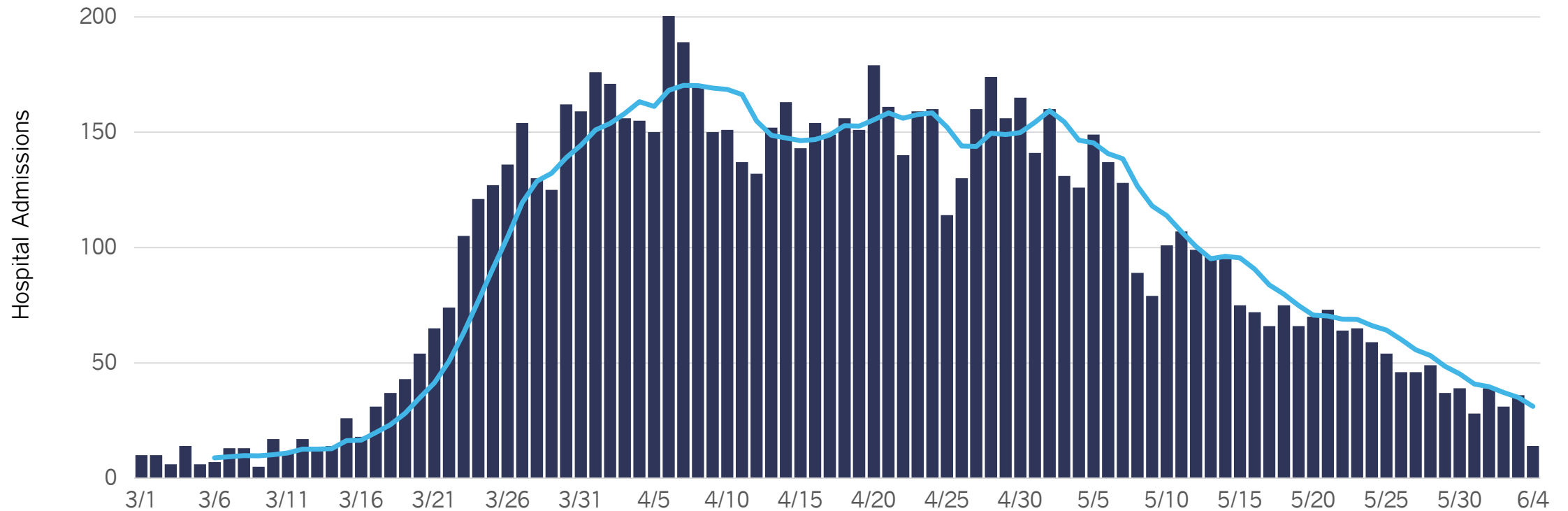
GO: CAUTIOUS PROGRESS

Daily COVID-19 hospital admissions decreasing > 28 days



COVID-19 Hospital admissions, daily counts and rolling 7-day average, first known hospital admit date

Trend	Decrease 26 days (5/9-6/4)
-------	----------------------------



Hospitalizations are reported to CDPH by hospitals into I-NEDSS and ESSENCE and self-reported by patients via an online survey. Cases who are not indicated to have been hospitalized across any of the three data sources are assumed to not have been hospitalized. Six records with hospital admit dates from January and February 2020 are excluded from this chart.

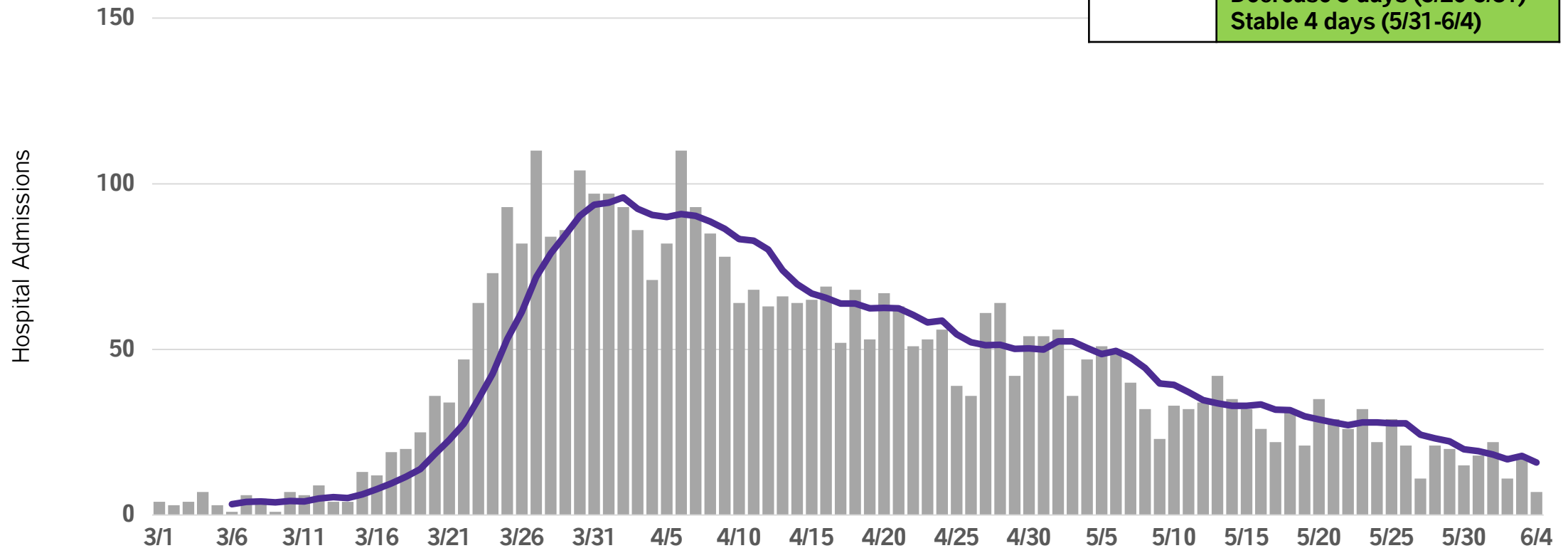
GO: CAUTIOUS PROGRESS

Black, non-Latinx hospital admissions stable/decreasing >28 days



COVID-19 hospital admissions among Black, non-Latinx residents, daily counts and rolling 7-day average, first known hospital admit date

Trend	Decrease 13 days (5/9-5/22)
	Stable 4 days (5/22-5/26)
	Decrease 5 days (5/26-5/31)
	Stable 4 days (5/31-6/4)



Hospitalizations are reported to CDPH by hospitals into I-NEDSS and ESSENCE and self-reported by patients via an online survey. Cases who are not indicated to have been hospitalized across any of the three data sources are assumed to not have been hospitalized. Six records with hospital admit dates from January and February 2020 are excluded from this chart.

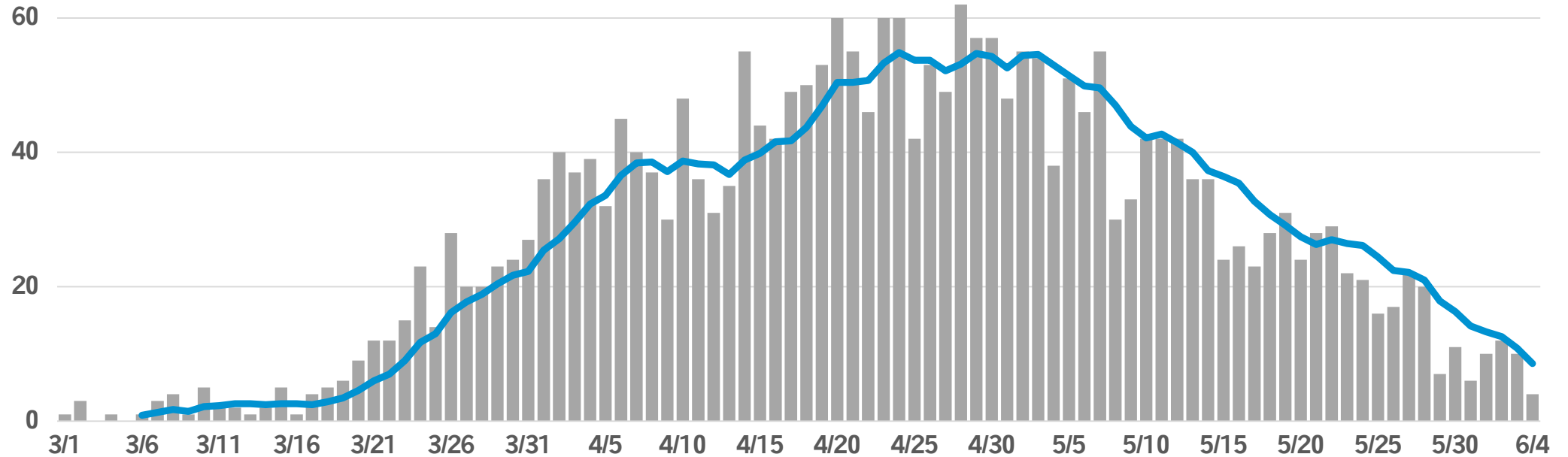
GO: CAUTIOUS PROGRESS

Latinx hospital admissions stable or decreasing >28 days

COVID-19 hospital admissions among Latinx residents, daily counts and rolling 7-day average, first known hospital admit date

Trend	
	Decrease 11 days (5/9-5/20)
	Stable 4 days (5/20-5/24)
	Decrease 11 days (5/24-6/4)

Hospital Admissions



Hospitalizations are reported to CDPH by hospitals into I-NEDSS and ESSENCE and self-reported by patients via an online survey. Cases who are not indicated to have been hospitalized across any of the three data sources are assumed to not have been hospitalized. Six records with hospital admit dates from January and February 2020 are excluded from this chart.

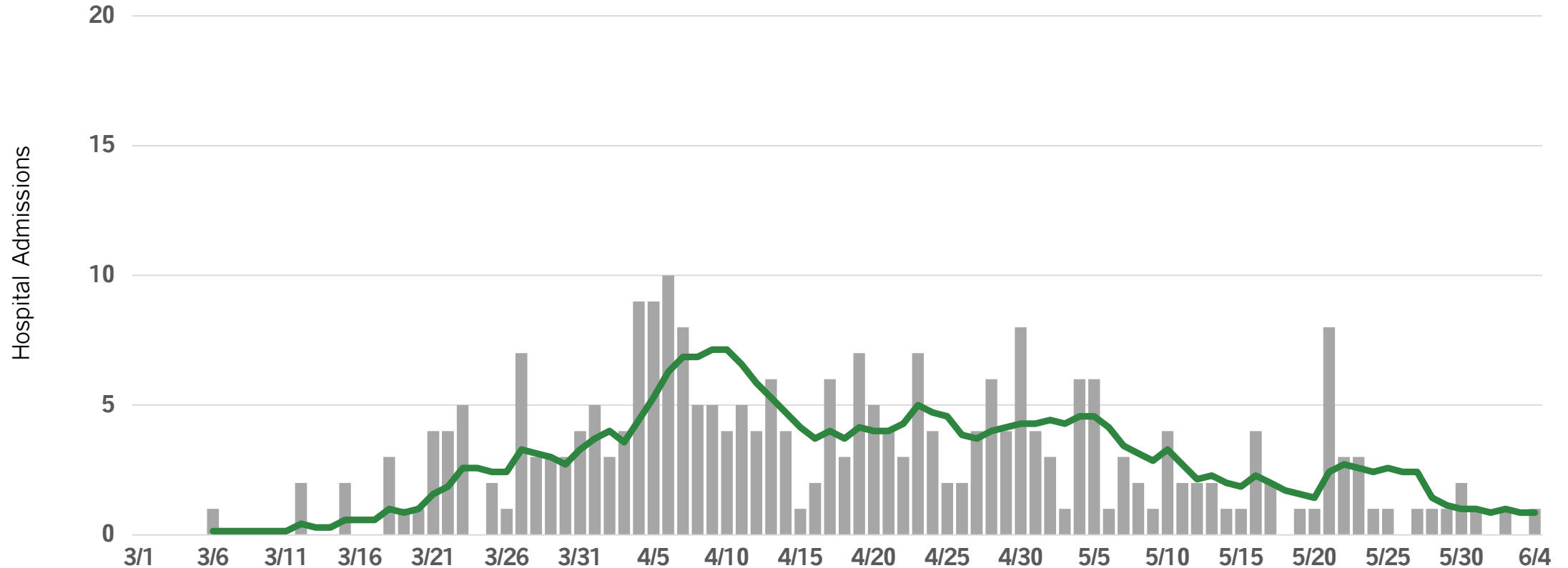
GO: CAUTIOUS PROGRESS

Asian non-Latinx hospital admissions stable/decreasing >28 days



COVID-19 hospital admissions among Asian, non-Latinx residents, daily counts and rolling 7-day average, first known hospital admit date

Trend	Decrease 5 days (5/9-5/14) Stable 21 days (5/14-6/4)
-------	---



Hospitalizations are reported to CDPH by hospitals into I-NEDSS and ESSENCE and self-reported by patients via an online survey. Cases who are not indicated to have been hospitalized across any of the three data sources are assumed to not have been hospitalized. Six records with hospital admit dates from January and February 2020 are excluded from this chart.

CAUTION: PAUSE AND MONITOR

White, non-Latinx hospital admissions decreasing 3 days

COVID-19 hospital admissions among white, non-Latinx residents, daily counts and rolling 7-day average, first known hospital admit date

50

Trend	Decrease 17 days (5/9-5/26)
	Increase 6 days (5/26-6/1)
	Decrease 3 days (6/1-6/4)

Hospital Admissions

40

30

20

10

0

3/1 3/6 3/11 3/16 3/21 3/26 3/31 4/5 4/10 4/15 4/20 4/25 4/30 5/5 5/10 5/15 5/20 5/25 5/30 6/4

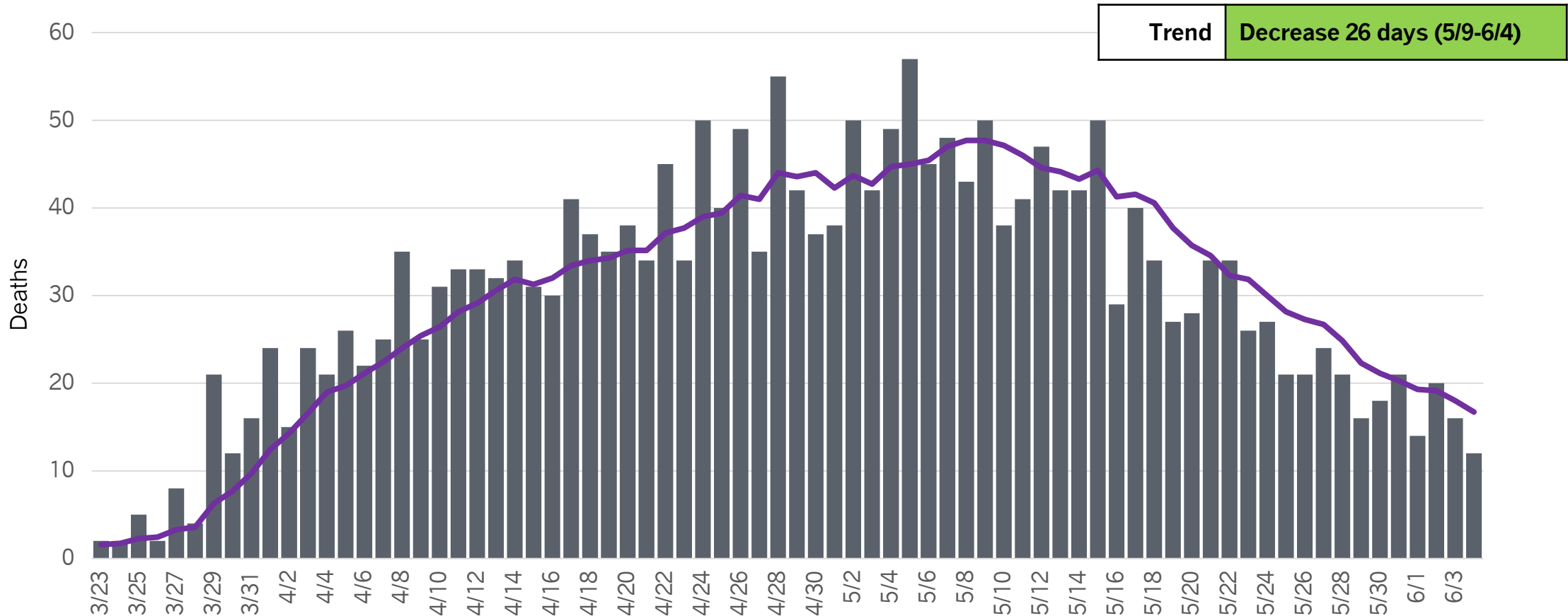
Hospitalizations are reported to CDPH by hospitals into I-NEDSS and ESSENCE and self-reported by patients via an online survey. Cases who are not indicated to have been hospitalized across any of the three data sources are assumed to not have been hospitalized. Six records with hospital admit dates from January and February 2020 are excluded from this chart.

GO: CAUTIOUS PROGRESS

COVID-19 deaths decreasing 26 days



COVID-19 deaths, daily counts
and rolling 7-day average, deceased date



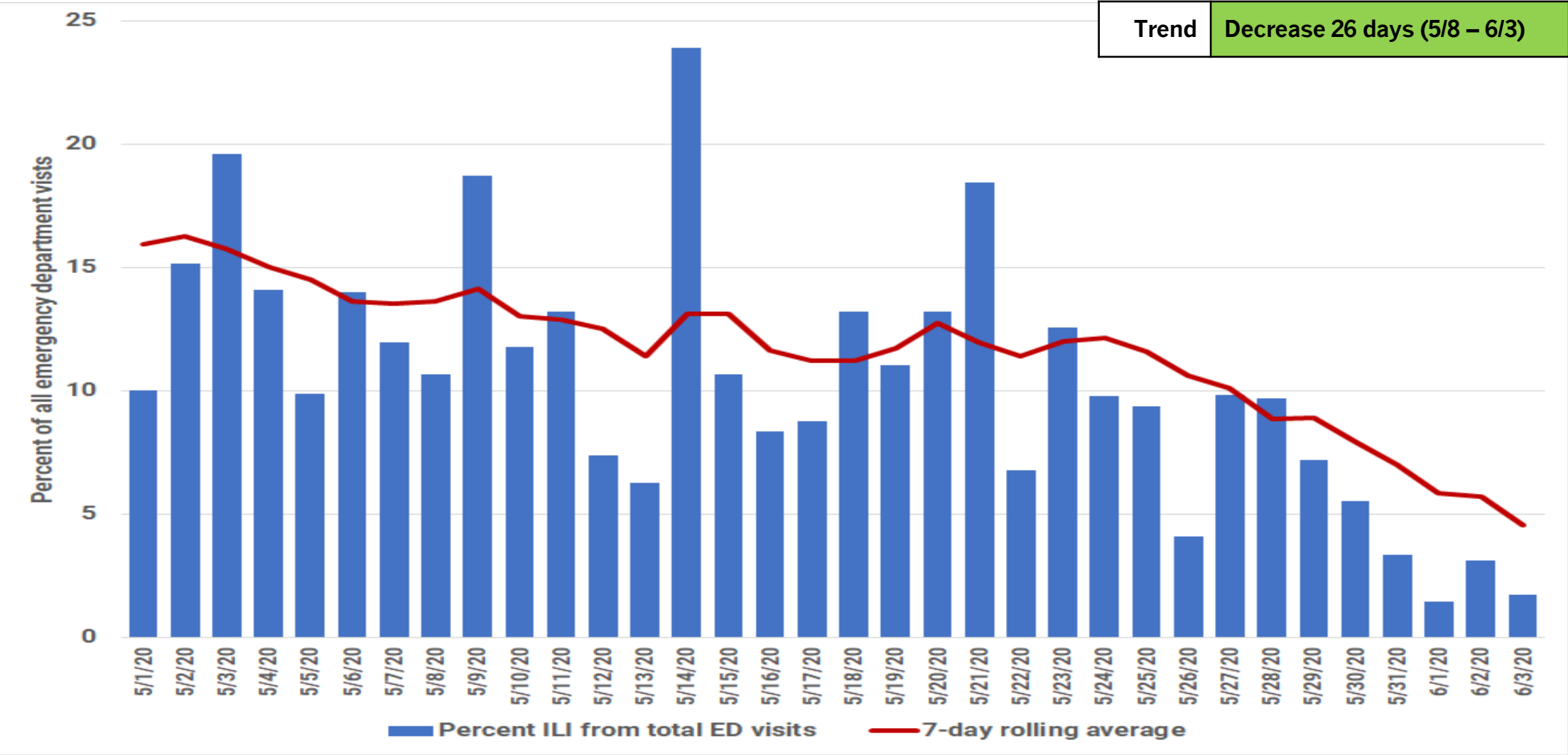
Daily COVID-19 deaths reported for Chicago residents with known death date. Data source: INEDSS.



Emergency Department Visits

GO: CAUTIOUS PROGRESS

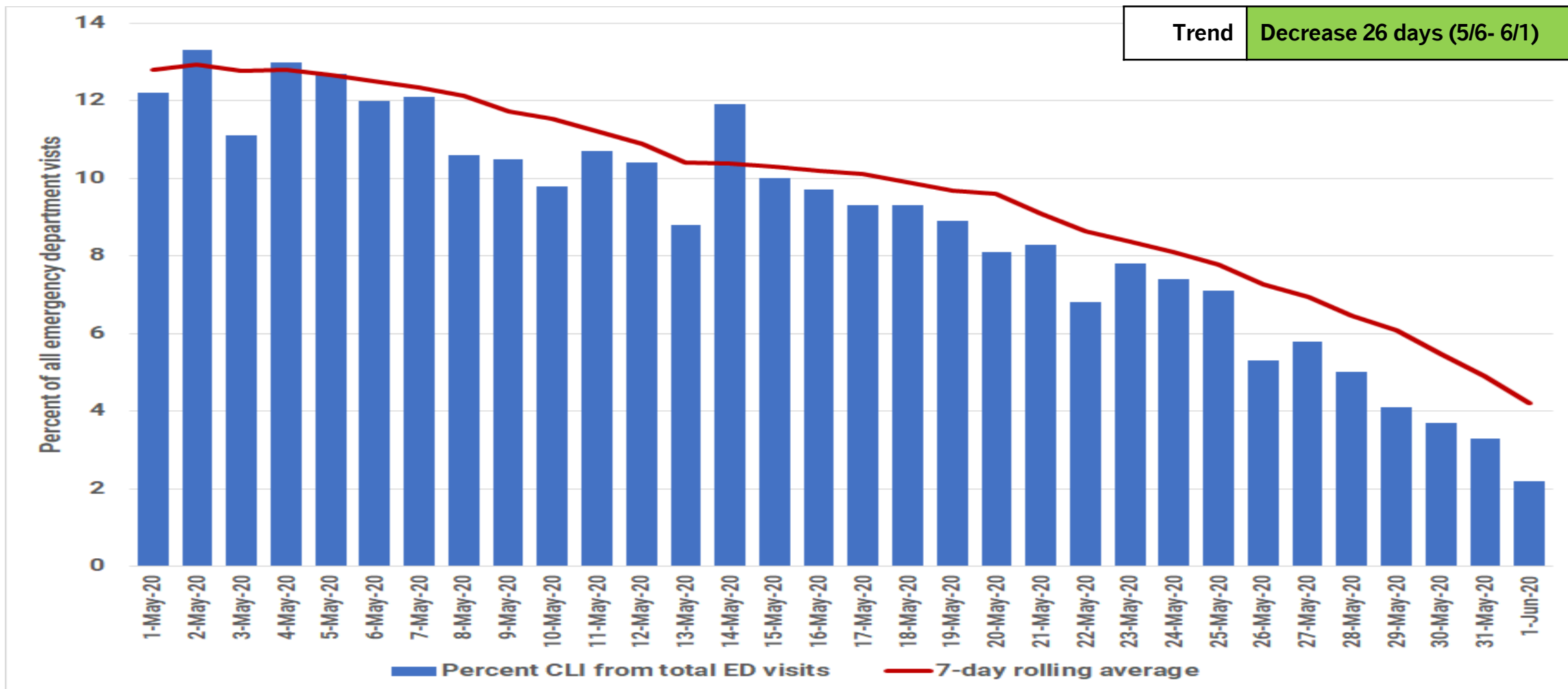
ED visits for influenza-like illnesses decreasing 26 days



ILI: Influenza-like illness. Percentage of all emergency department visits reported with influenza-like illness symptoms among Chicago residents.
Data Source: Illinois Hospital Emergency Departments reporting to CDPH through the National Syndromic Surveillance Project.

GO: CAUTIOUS PROGRESS

ED visits for COVID-like illness decreasing 26 days



Percentage of all emergency department visits reported with COVID-like symptoms among Chicago residents. Trend analysis only assess the last 27 days. Data Source: Illinois Hospital Emergency Departments reporting to CDPH through the National Syndromic Surveillance Project.



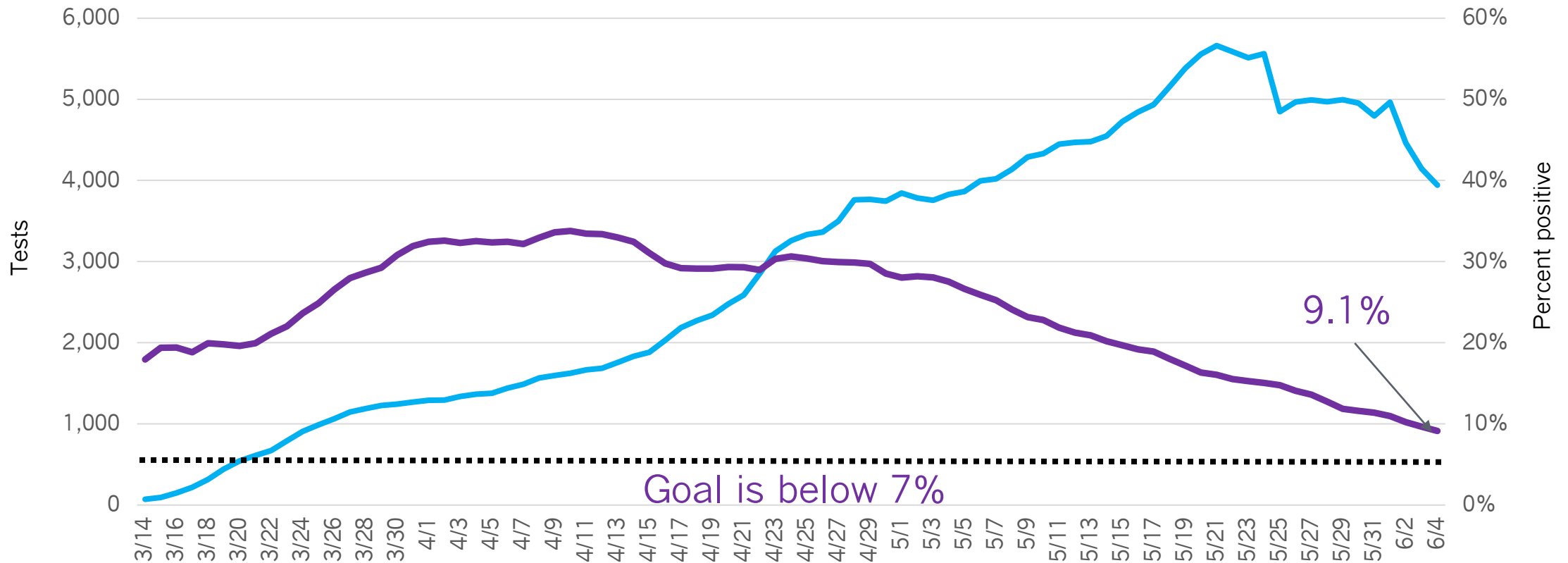
Percent Positivity

GO: CAUTIOUS PROGRESS

Percent positivity less than 10% citywide; recent declines in testing



COVID-19 tests, 7-day rolling average for percent positive (one test per individual ever) and for counts (one test per individual per day)



For percent positivity: Every individual tested is counted once. The first positive test is the date used for the test result. If the individual has only negative tests, the date of the first negative test is used. (INEDSS) For 7-day rolling average of counts: All tests performed on Chicago residents as reported by electronic lab reporting (IDPH).



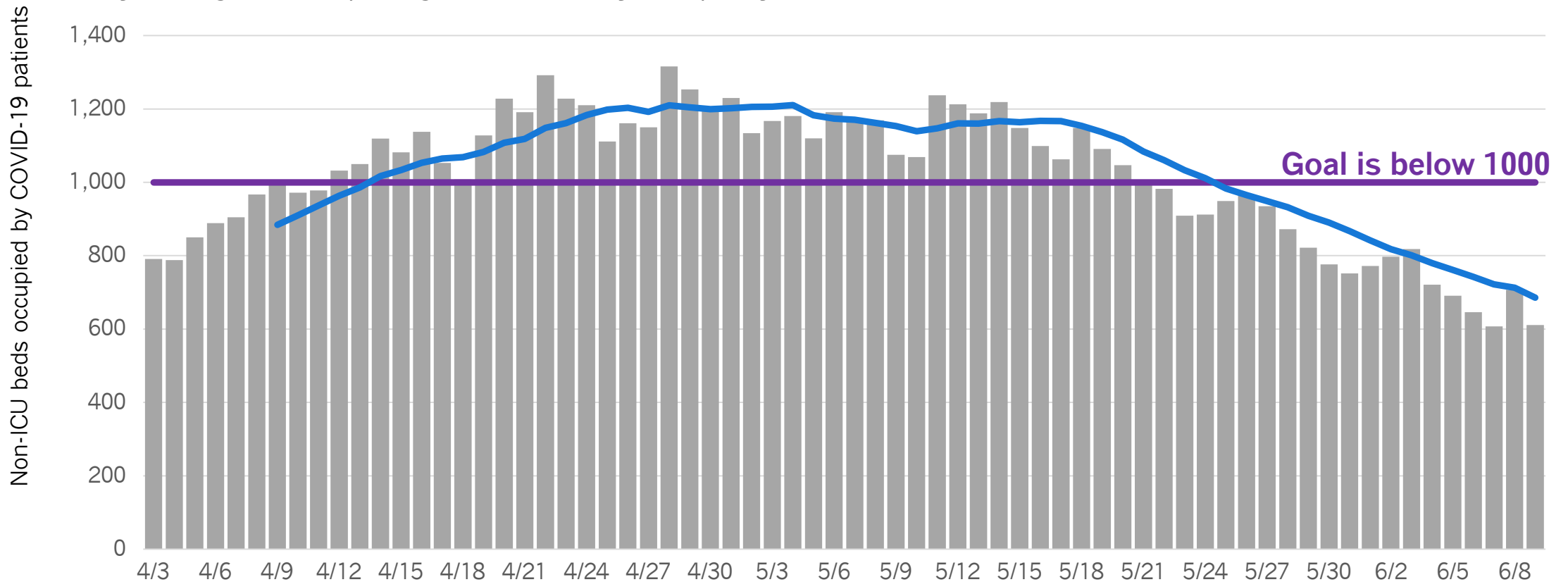
Hospital System Capacity

GO: CAUTIOUS PROGRESS



Non-ICU capacity adequate: <1,000 non-ICU beds occupied by patients with COVID-19

COVID-19 acute/non-ICU beds occupied, daily counts, 7 day average and reopening threshold, daily occupancy census



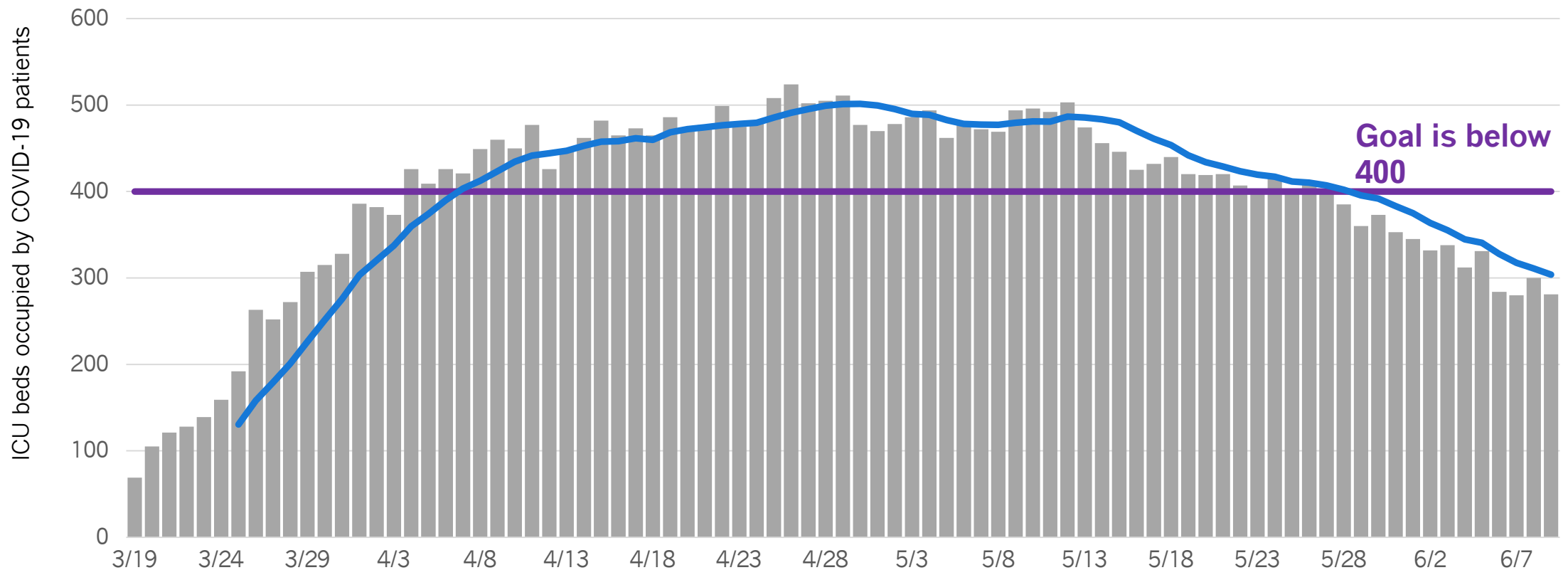
Includes all Chicago hospitals. Hospitals report daily to CDPH via EMResource, beginning April 3 (acute non-ICU occupancy). Acute non-ICU bed counts include burn, emergency department, med/surg, other, pediatrics and psychiatry beds in Chicago hospitals. Includes Chicago and non-Chicago residents. Includes confirmed and suspected COVID-19 cases.

GO: CAUTIOUS PROGRESS

ICU capacity adequate: <400 ICU beds occupied by patients with COVID-19



COVID-19 ICU beds occupied, daily counts, 7 day average and progress threshold, daily occupancy census

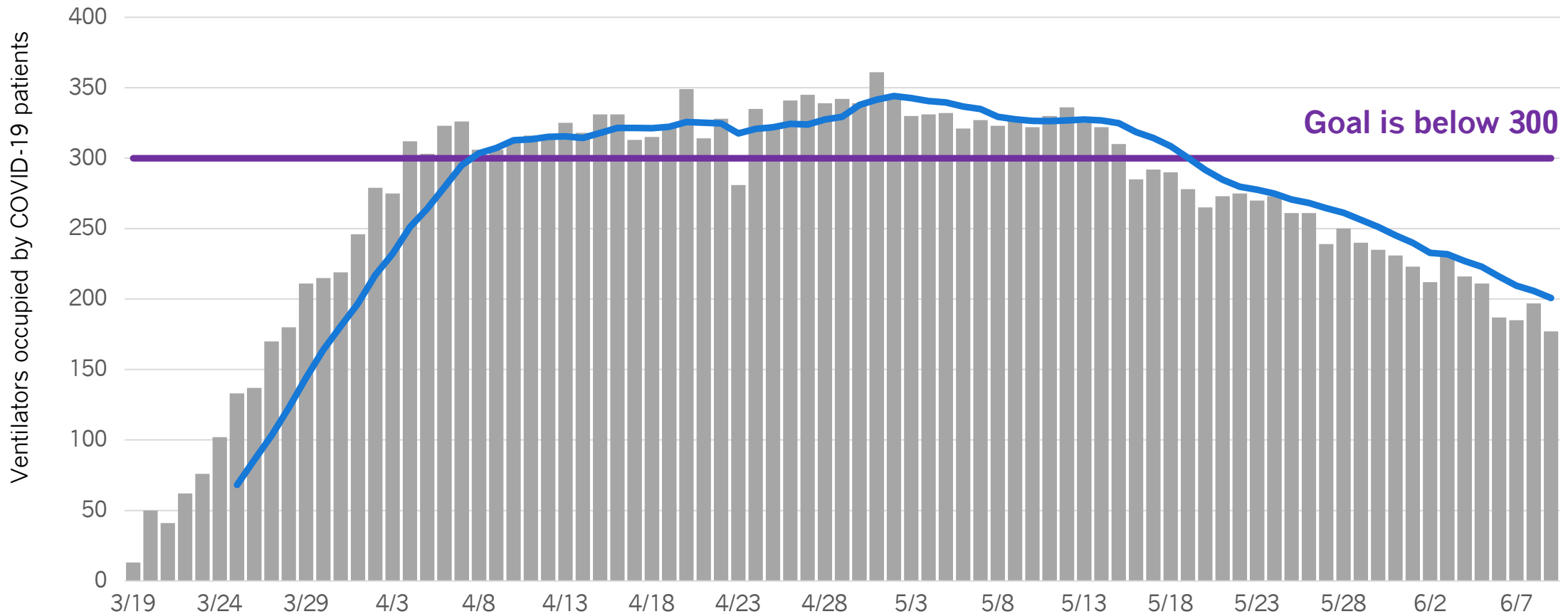


Includes all Chicago hospitals. Hospitals report daily to CDPH via EMResource, beginning March 19. ICU bed count includes all adult and pediatric ICU beds in Chicago hospitals. Includes Chicago and non-Chicago residents. Includes confirmed and suspected COVID-19 cases. Beginning 4/24/2020, the definition of ICU status changed as requested by HHS.

GO: CAUTIOUS PROGRESS

Ventilator capacity adequate: <300 patients with COVID-19 on ventilators

COVID-19 ventilators in use, daily counts, 7 day average and reopening threshold, daily utilization census



Includes all Chicago hospitals. Hospitals report daily to CDPH via EMResource, beginning March 19. Includes Chicago and non-Chicago residents. Includes confirmed and suspected COVID-19 cases. Beginning 4/24/2020, ventilator counts include all full-functioning mechanical ventilators, BiPAP, anesthesia machines and portable/transport ventilators.



Diagnostic Testing Capacity

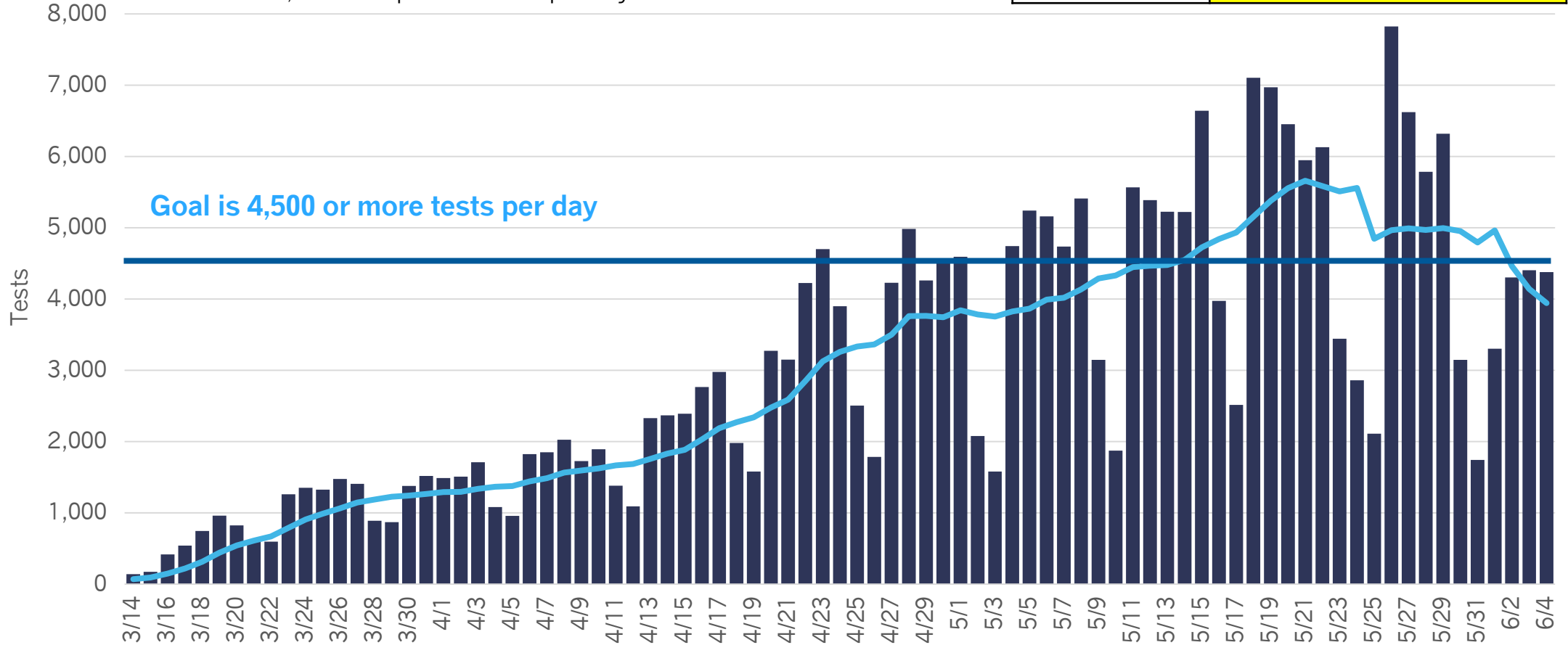
CAUTION: PAUSE AND MONITORING

Explained decline in testing <4,500 tests per day



COVID-19 tests, daily count and 7-day moving average, all test results, one test per individual per day

Trend	3,944 tests per day (6/4) 3 days below target
-------	--



All COVID-19 tests performed on Chicago residents per day as reported by electronic lab reporting from IDPH. 4,500 tests per day represents the capacity to test 5% of Chicago residents per month.