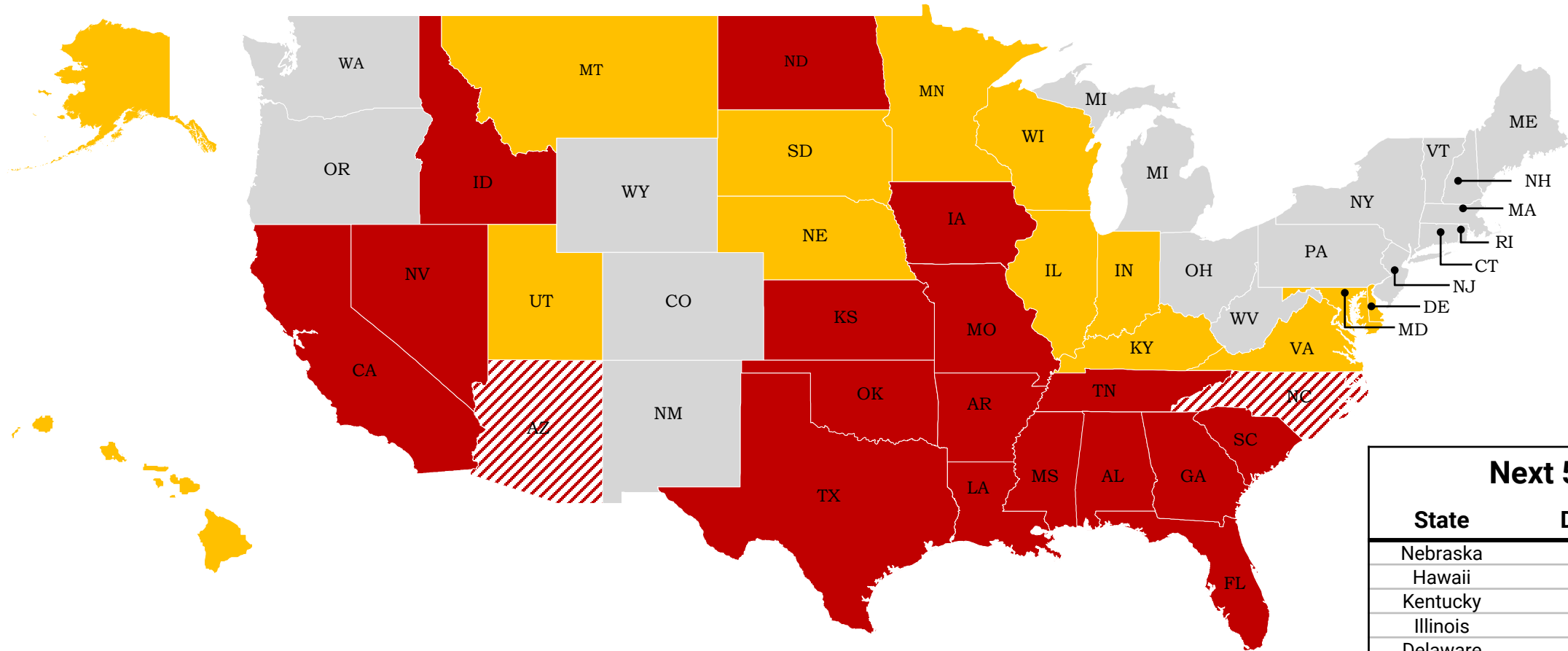


COVID-19 Update

August 18, 2020



Travel Order: Removing Nebraska and Wisconsin; adding back Iowa and Kansas



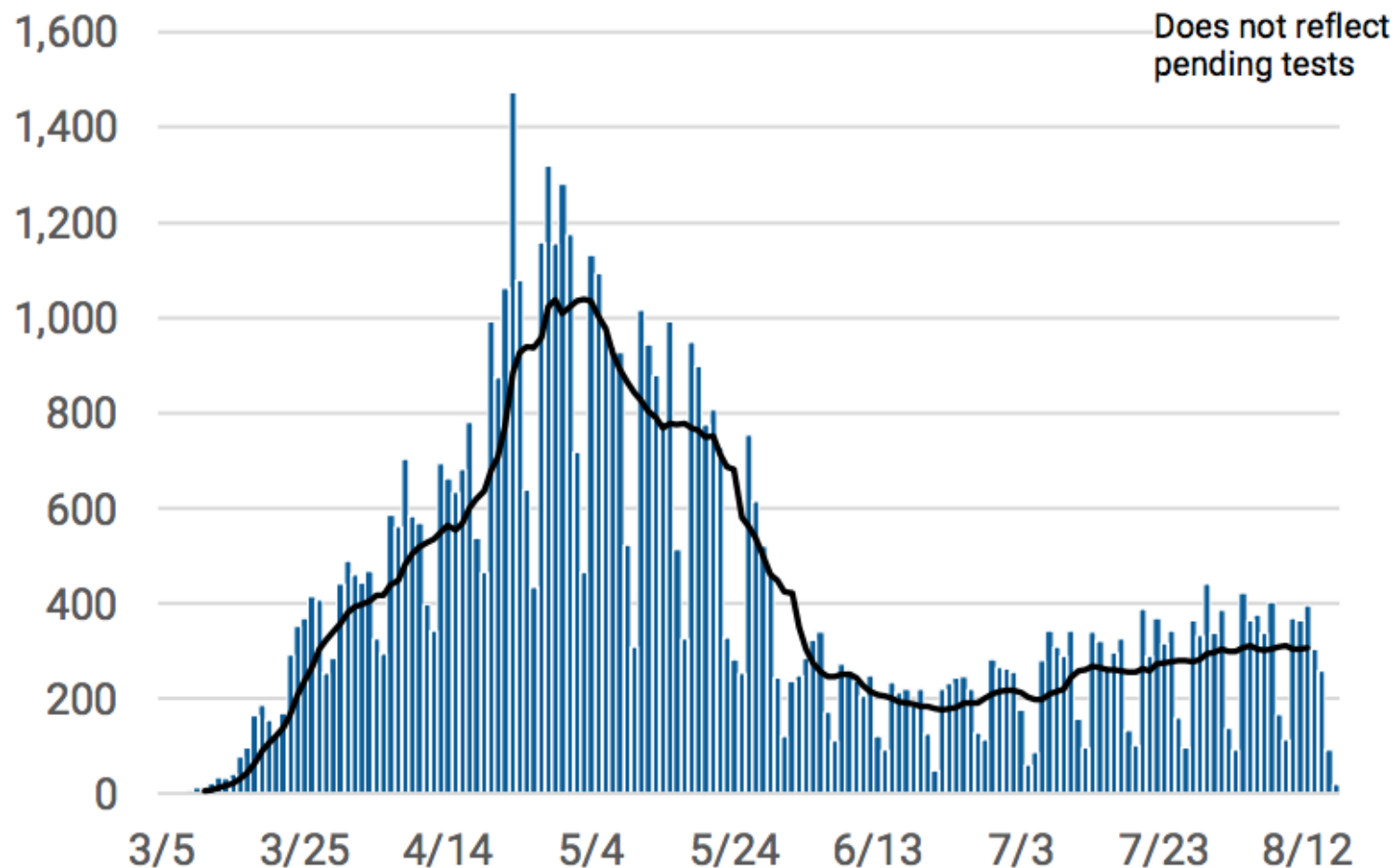
Next 5 states	
State	Daily Cases /100k
Nebraska	14.4
Hawaii	14.4
Kentucky	13.9
Illinois	13.5
Delaware	13.3

 Designated States  < 15 daily cases for one week while designated  Between 10 -15 daily cases per 100k  Less than 10 daily cases per 100k

Note: *This State was on the designated list and is now under 15 daily cases per 100k residents, if they stay below for another week, it will be taken off the list
Source: CDC Data Tracker

★ New Daily COVID-19 Cases, Chicago

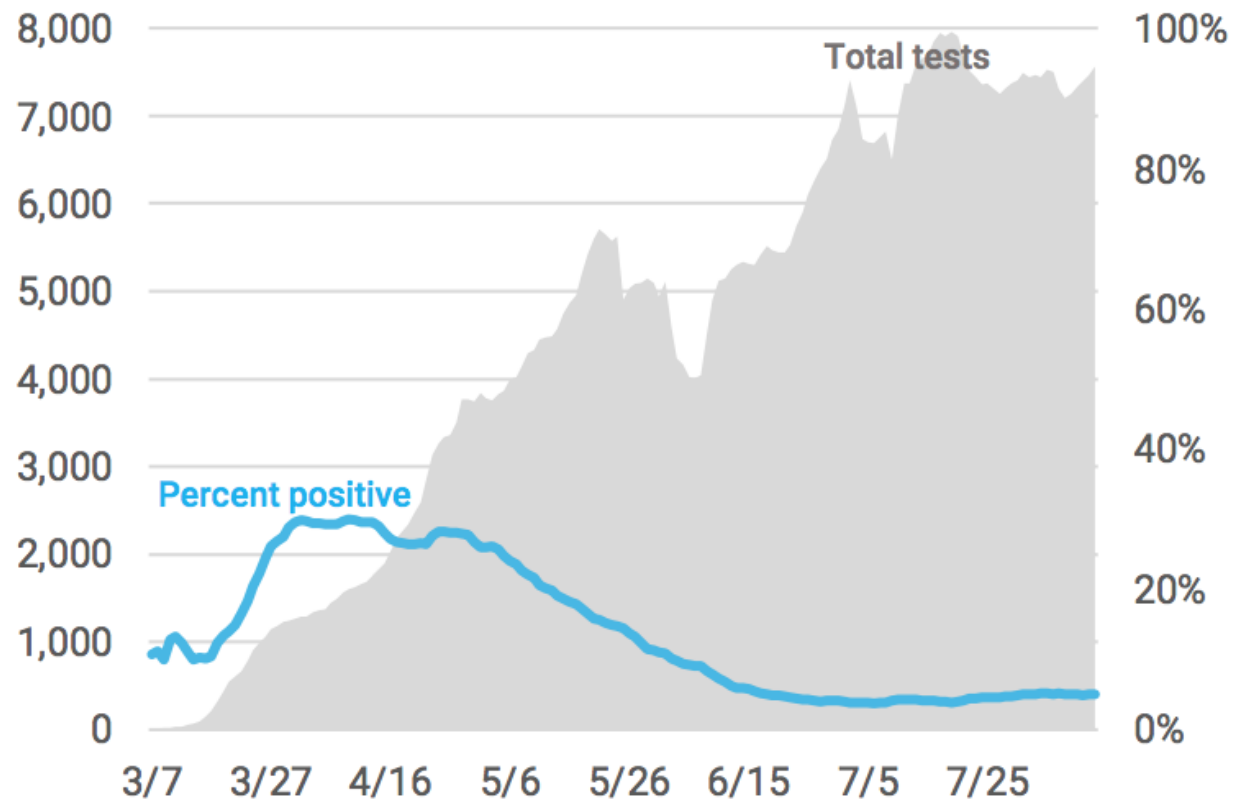
Confirmed daily COVID-19 cases and 7-day rolling average



Current
307
new cases/day

★ Testing and Percent Positivity, Chicago

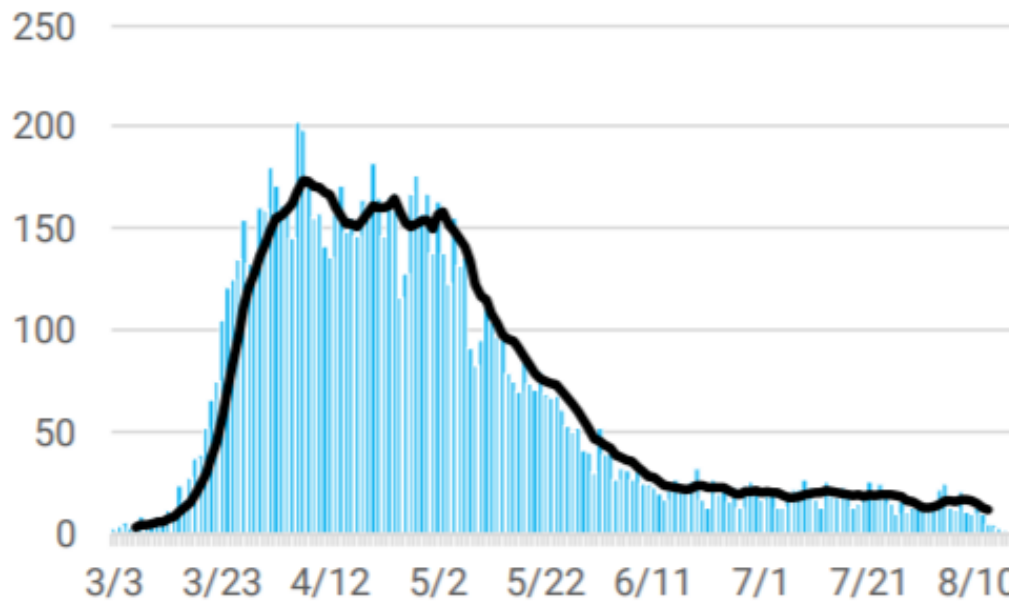
COVID-19 testing and percent positivity, 7-day rolling average



Current Test Positivity
5.0%

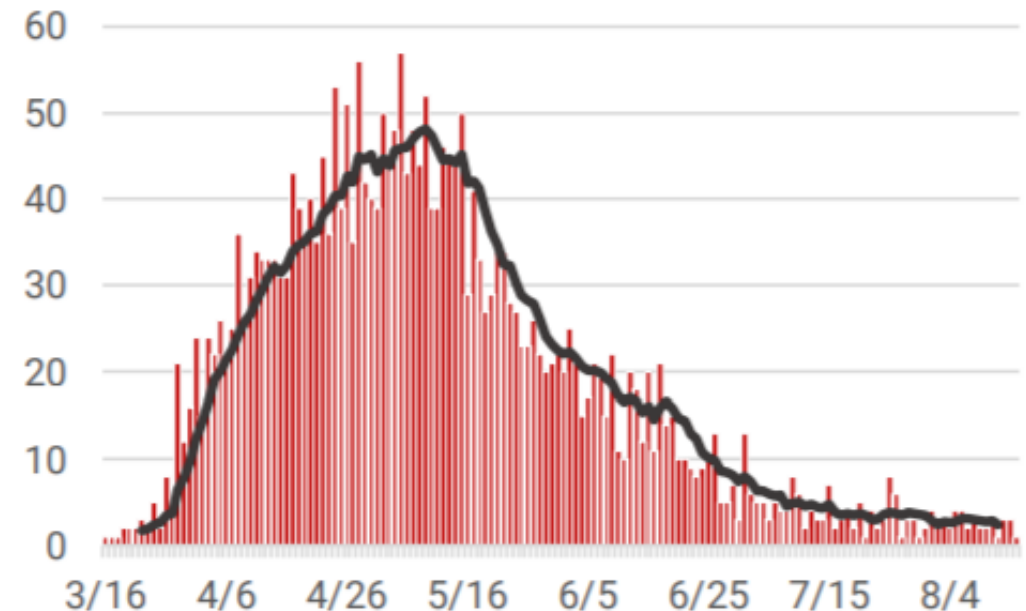
★ Hospitalizations and Deaths, Chicago

Daily COVID-19 hospitalizations and 7-day rolling average



Chicago resident COVID-19 cases who have been hospitalized, by date of first hospitalization. Results for several previous days are updated each day.

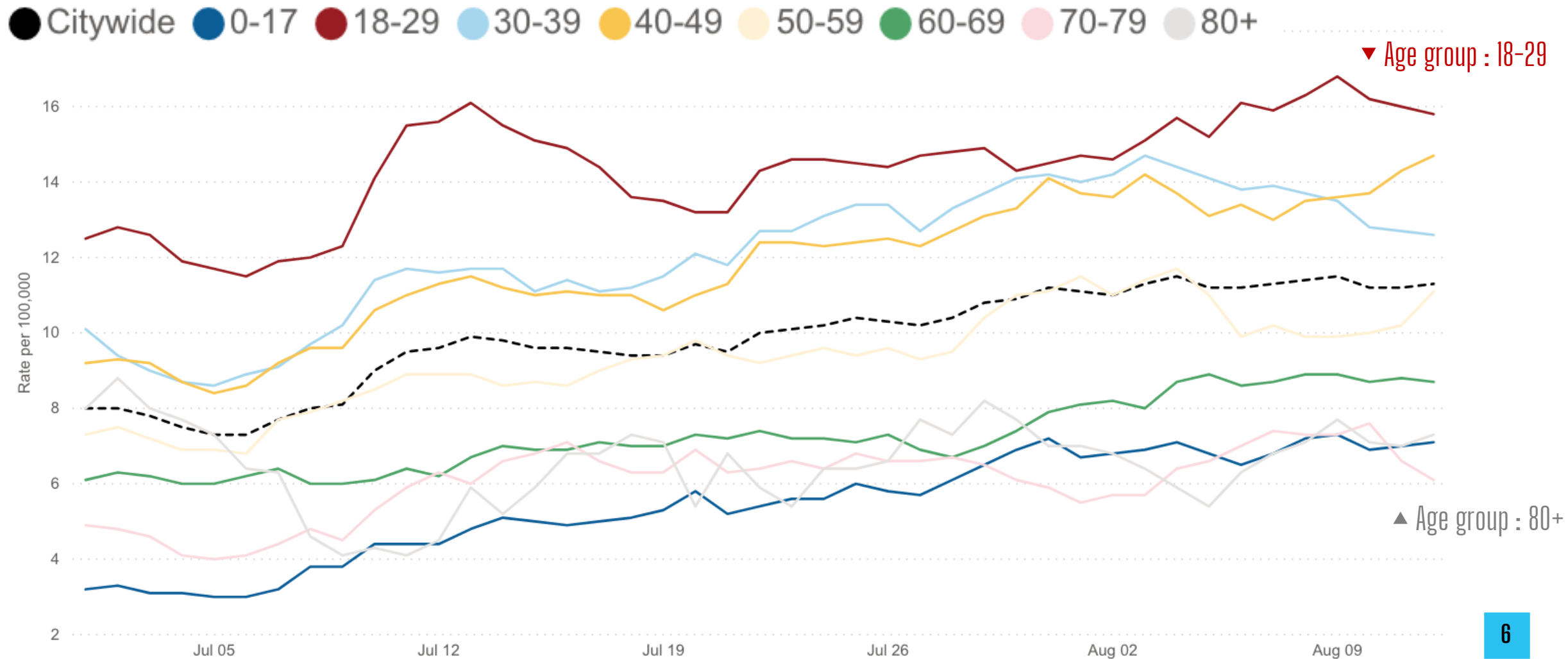
Daily COVID-19 deaths and 7-day rolling average



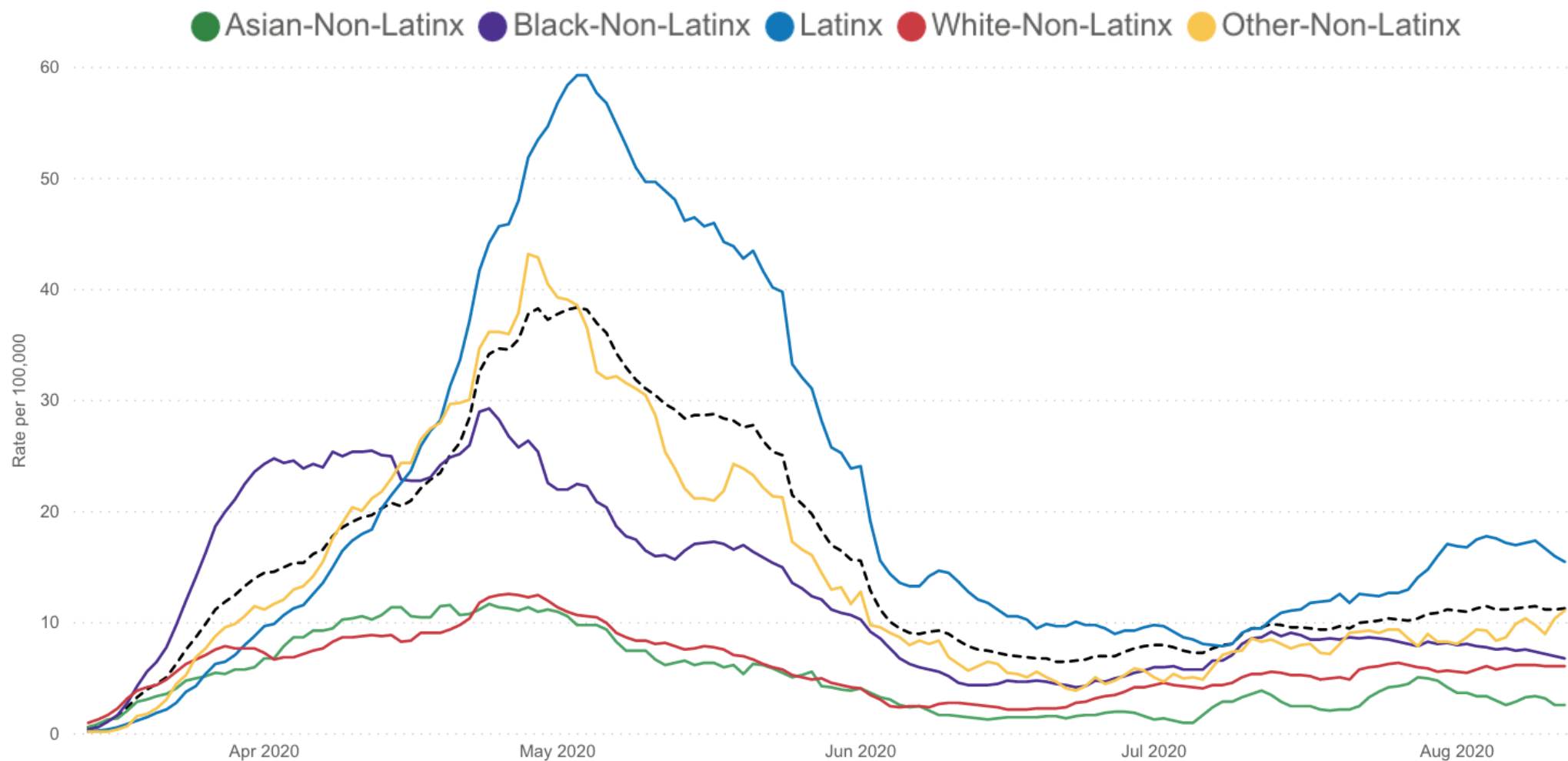
Chicago resident COVID-19 cases who have died, by date of death. Results for several previous days are updated each day.



Daily case rate by age group—July-August



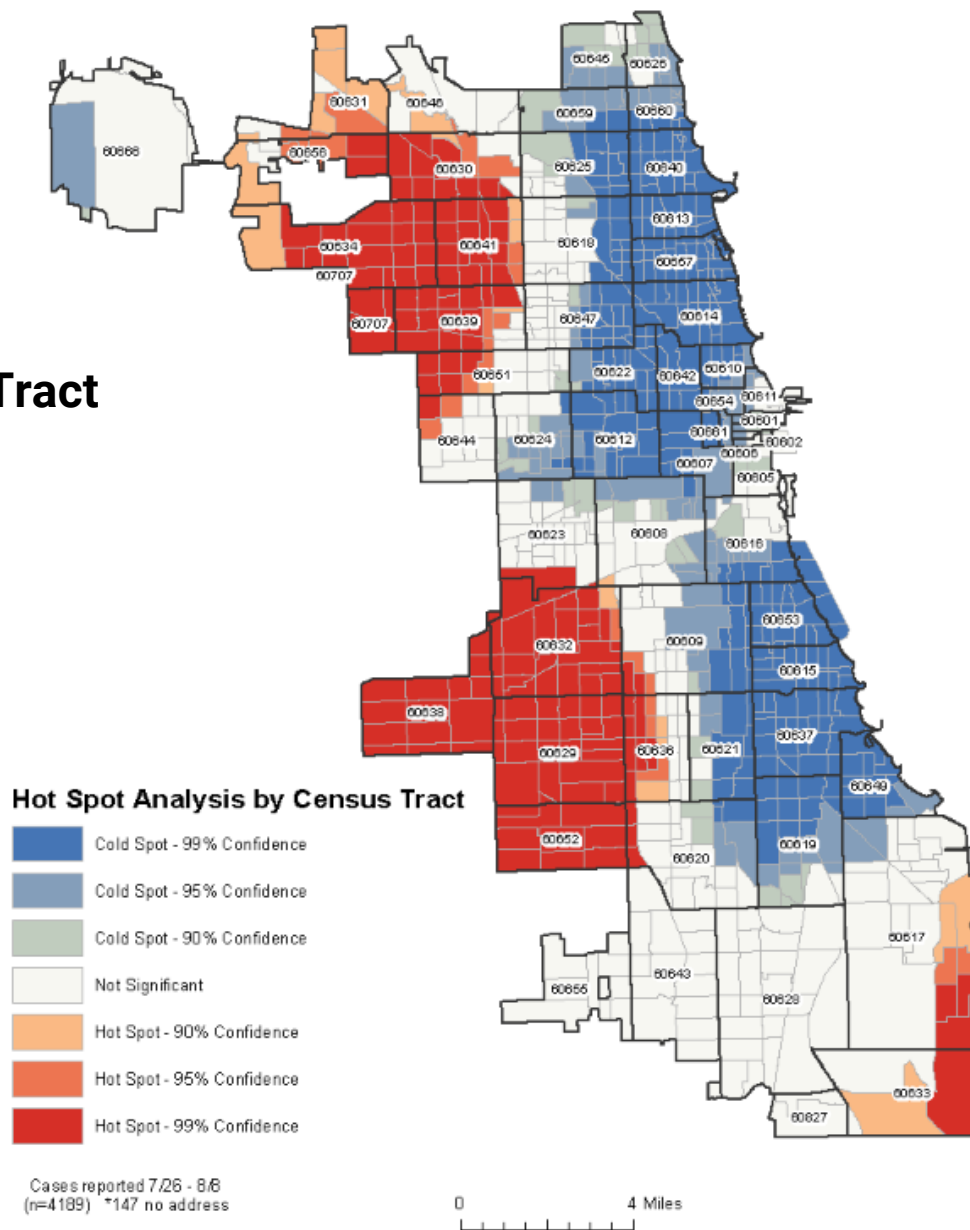
★ Daily case rate by rate/ethnicity—March–August



COVID-19 Case Hot Spot Analysis

COVID-19 Case Hot and Cold Spots, by Census Tract
July 26, 2020 – August 8, 2020

Only 5-6% of cases are associated
with **place-based or congregate setting**
outbreaks



★ Characteristics and Reported Exposures in Hot Spot Zip Codes

Transmission appears to be community driven and not tied to travel, known outbreaks or an increase in large events/gatherings

	Far South	Southwest	Northwest	All Others
Travel outside IL	9.1	10.5	6.6	16.8
Attended event/gathering	8.5	7.8	10.4	9.3
Close contact with a known COVID case	62.7	59.5	58.0	56.8
Relationship to known COVID case				
Any Family	71.4	75.4	81.1	58.7
Family, household	61.9	60.1	56.1	45.2
Friend	9.5	4.9	3.1	15.1
Coworker	7.6	9.3	5.9	9.1
Live in single family home, detached	67.5	60.4	55.0	42.1

★ Characteristics and Reported Exposures in Hot Spot Zip Codes

Transmission appears to be community driven and not tied to travel, known outbreaks or an increase in large events/gatherings

	Far South	Southwest	Northwest	All Others
Travel outside IL	9.1	10.5	6.6	16.8
Attended event/gathering	8.5	7.8	10.4	9.3
Close contact with a known COVID case	62.7	59.5	58.0	56.8
Relationship to known COVID case				
Any Family	71.4	75.4	81.1	58.7
Family, household	61.9	60.1	56.1	45.2
Friend	9.5	4.9	3.1	15.1
Coworker	7.6	9.3	5.9	9.1
Live in single family home, detached	67.5	60.4	55.0	42.1

★ Characteristics and Reported Exposures in Hot Spot Zip Codes

Contact among household and family members are important factors that appear to be driving transmission in these areas

	Far South	Southwest	Northwest	All Others
Travel outside IL	9.1	10.5	6.6	16.8
Attended event/gathering	8.5	7.8	10.4	9.3
Close contact with a known COVID case	62.7	59.5	58.0	56.8
Relationship to known COVID case				
Any Family	71.4	75.4	81.1	58.7
Family, household	61.9	60.1	56.1	45.2
Friend	9.5	4.9	3.1	15.1
Coworker	7.6	9.3	5.9	9.1
Live in single family home, detached	67.5	60.4	55.0	42.1

Identifying Community Risk Factors

HOT SPOT Census Tracts

Average Population: ~4,400

% with dependents: ~38%

% crowded housing: ~5.5%

COLD SPOT Census Tracts

Average Population: ~2,700

% with dependents: ~29%

% crowded housing: ~2.5%

★ Chicago Youth Service Corps: Social Distancing Ambassadors



Marketing Campaign



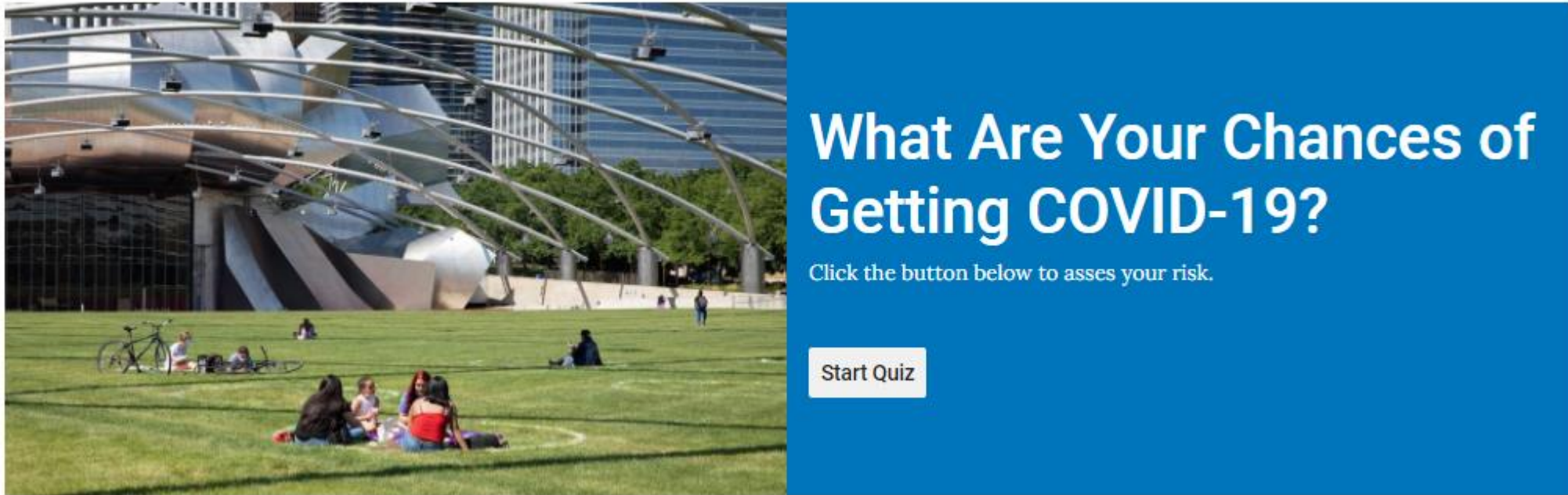
Community Outreach



Community Outreach



★ My COVID-19 Risk: THINK TWICE



The image is a composite. On the left is a photograph of the Apple Park 'Spaceship' building, a large, metallic, spherical structure with a complex network of silver, curved support beams. In the foreground, a green lawn is visible with several people sitting on the grass, some with bicycles. On the right is a solid blue rectangular overlay containing white text and a button.

What Are Your Chances of Getting COVID-19?

Click the button below to asses your risk.

[Start Quiz](#)

STEP ONE: Think about yourself and all the people with whom you have close contact

STEP TWO: Think about the public activity



Think Twice

STEP ONE

- Think about yourself and all the people whom you have close contact:
 - Is everyone under age 60?
 - Is everyone healthy, without underlying medical conditions?

STEP TWO

- Think about the public activity:
 - Can you avoid crowds or close interaction with people you do not know?
 - Can you always keep 6-foot distance from others?
 - Can you always wear a mask? (And can everyone else?)
 - Is the activity outdoors?



Thank You!



[Chicago.gov/Health](https://chicago.gov/Health)



HealthyChicago@cityofchicago.org



[@ChicagoPublicHealth](https://www.facebook.com/ChicagoPublicHealth)



[@ChiPublicHealth](https://twitter.com/ChiPublicHealth)