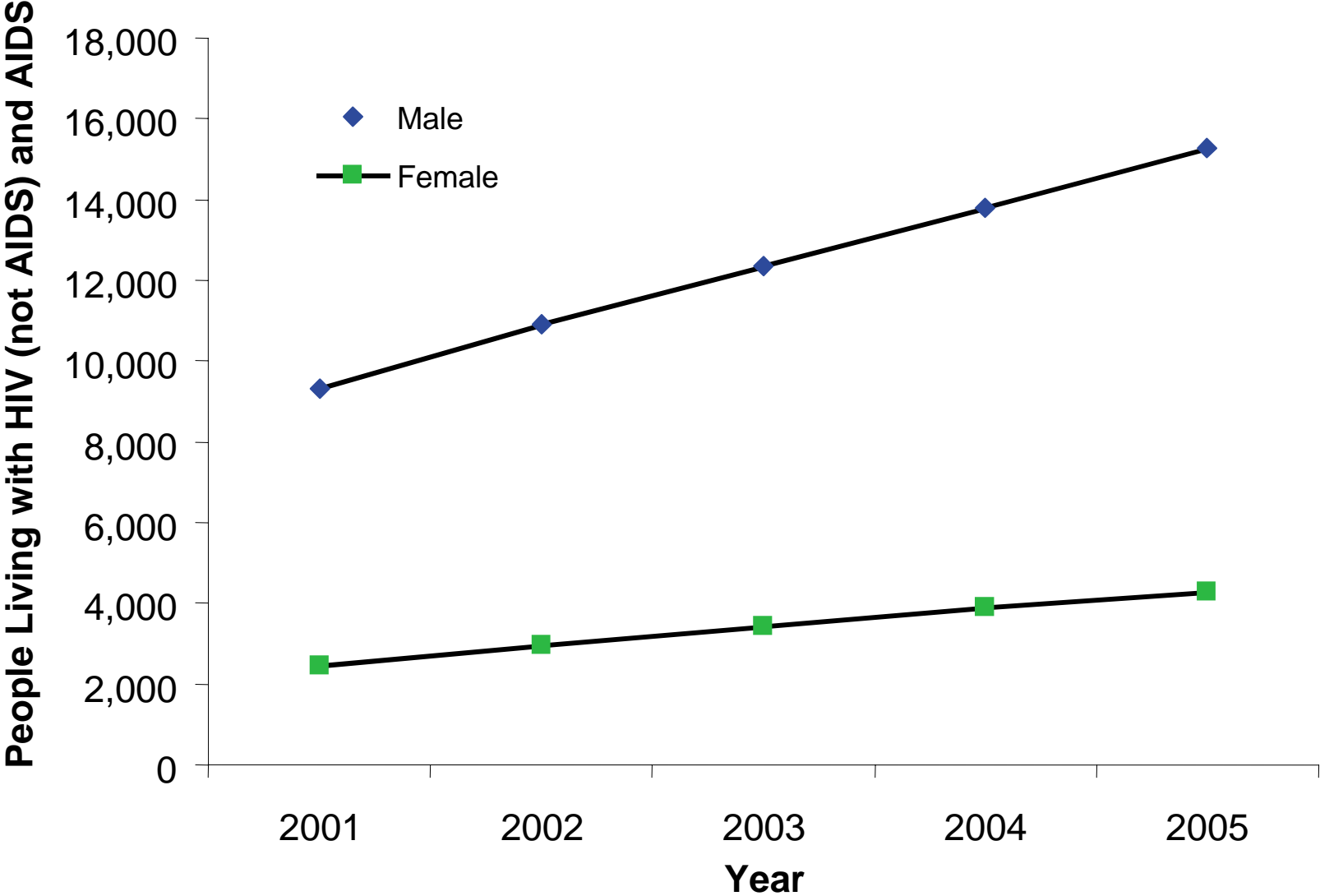




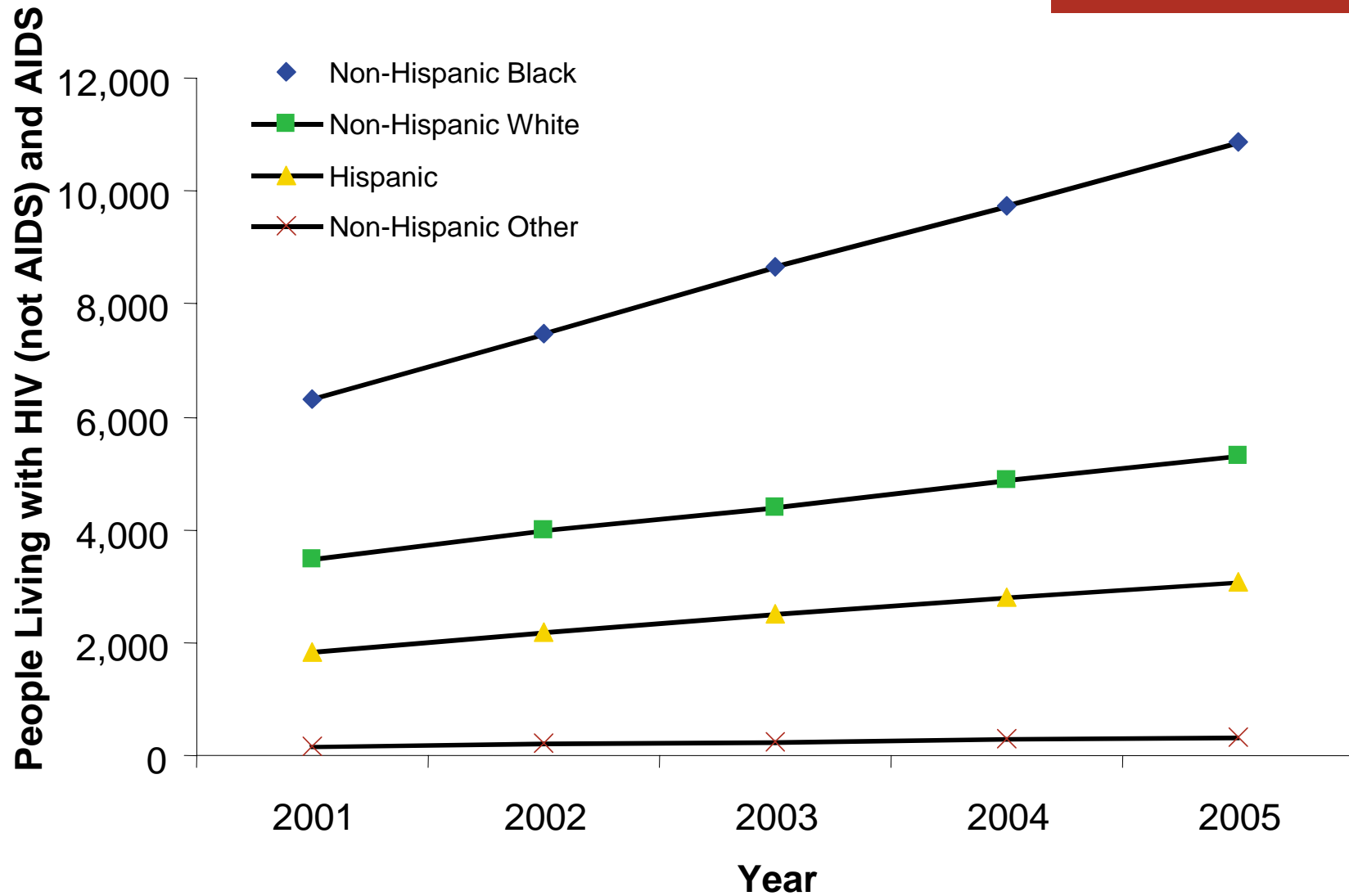
HIV/AIDS in Chicago: General Epidemiology

City of Chicago, through 2005
(as of 9/30/2006)

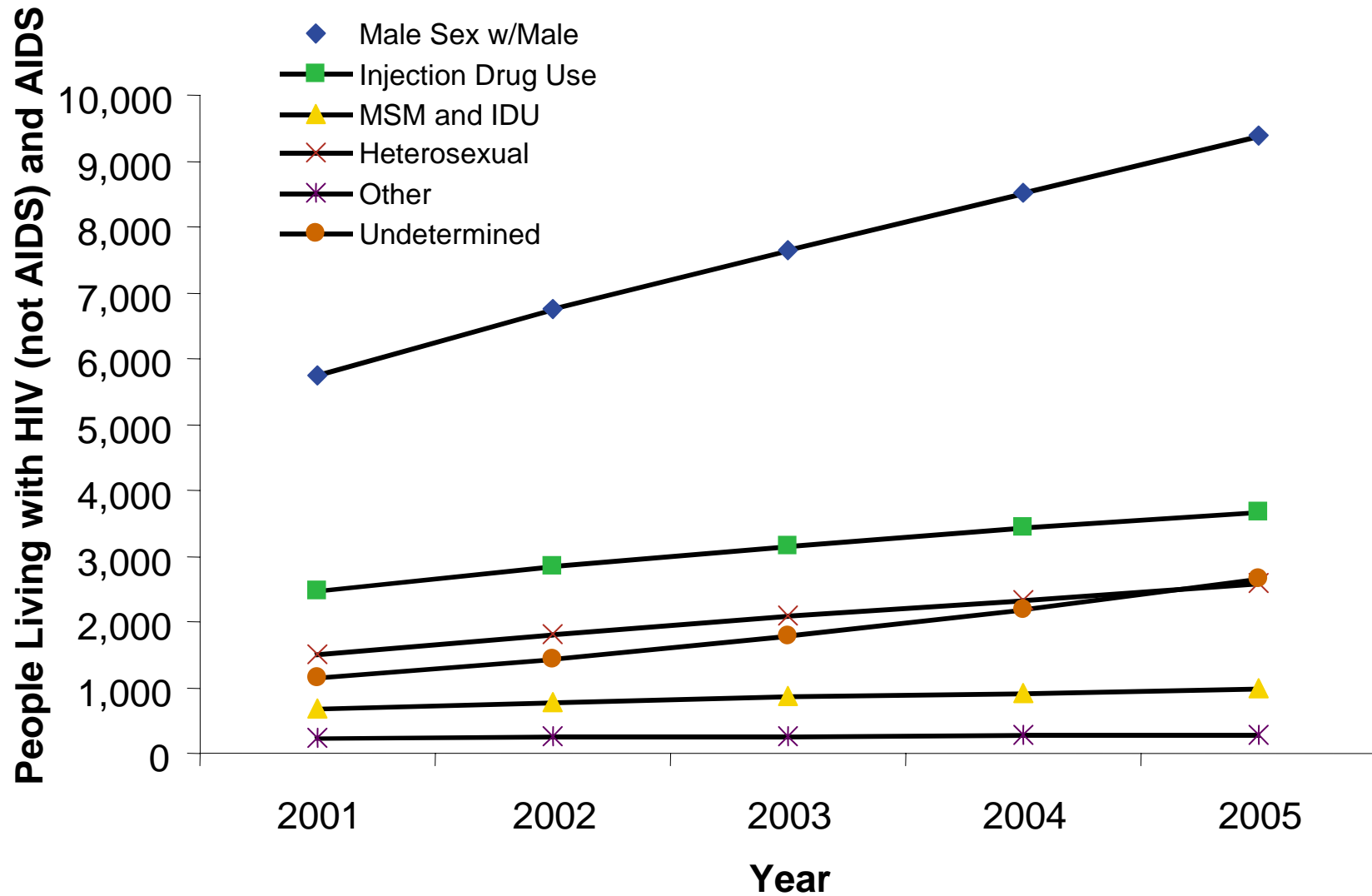
Number of Adults and Adolescents Living with HIV/AIDS by Sex, 2001-2005, Chicago as of (9/30/2006)



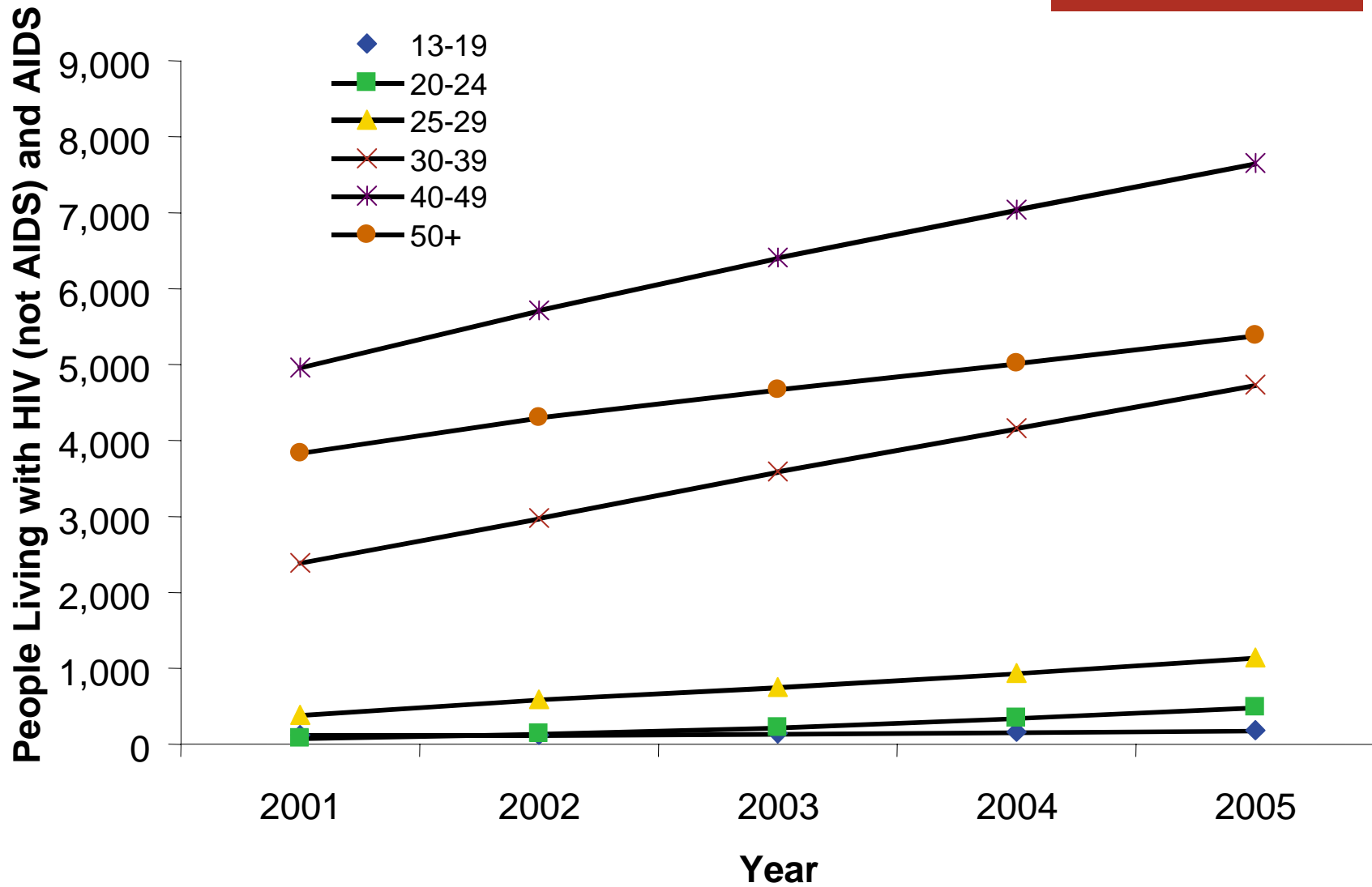
Number of Adults and Adolescents Living with HIV/AIDS by Race/Ethnicity, 2001-2005, Chicago (as of 9/30/2006)



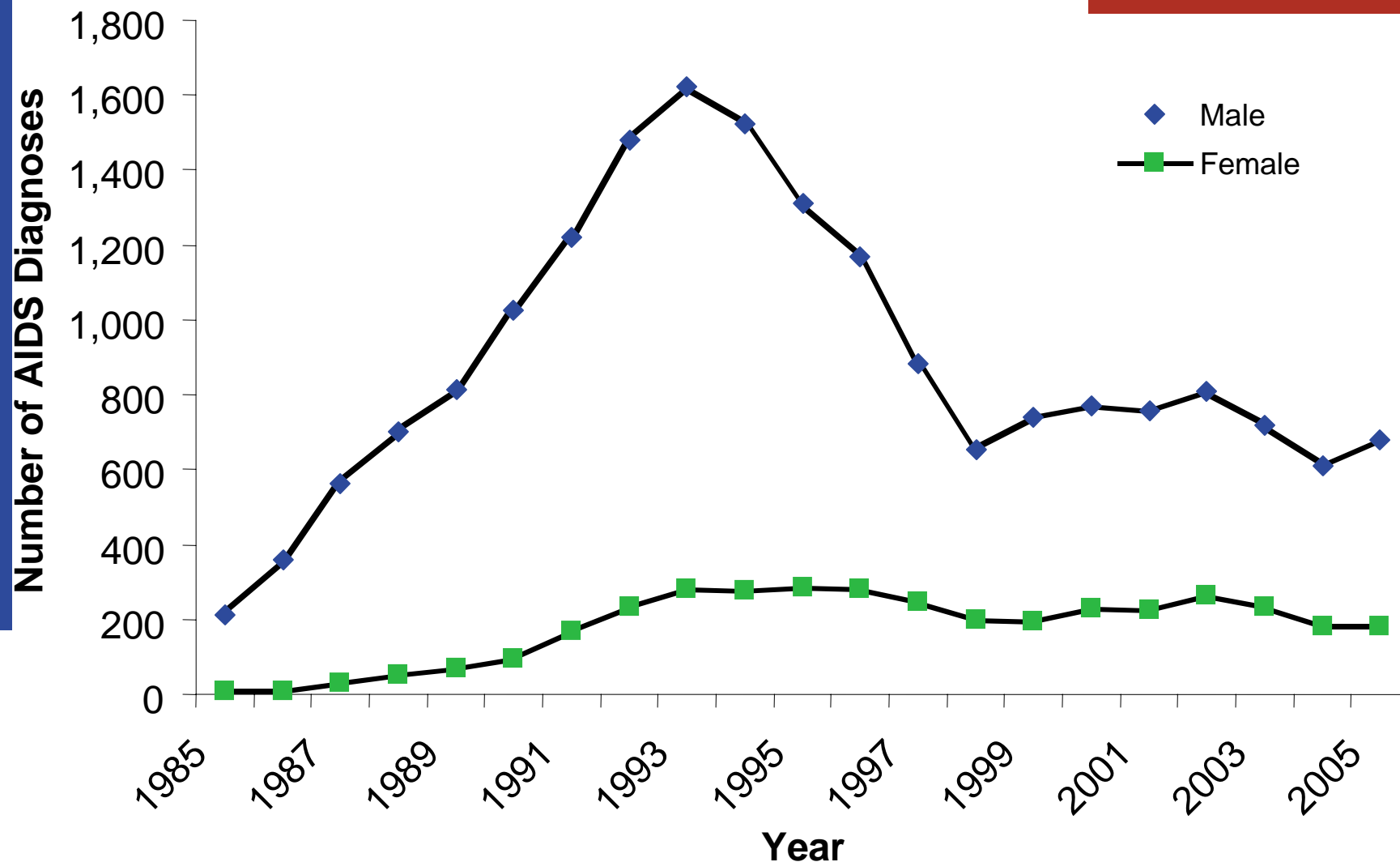
Number of Adults and Adolescents Living with HIV/AIDS, 2001-2005, Chicago (as of 9/30/2006)



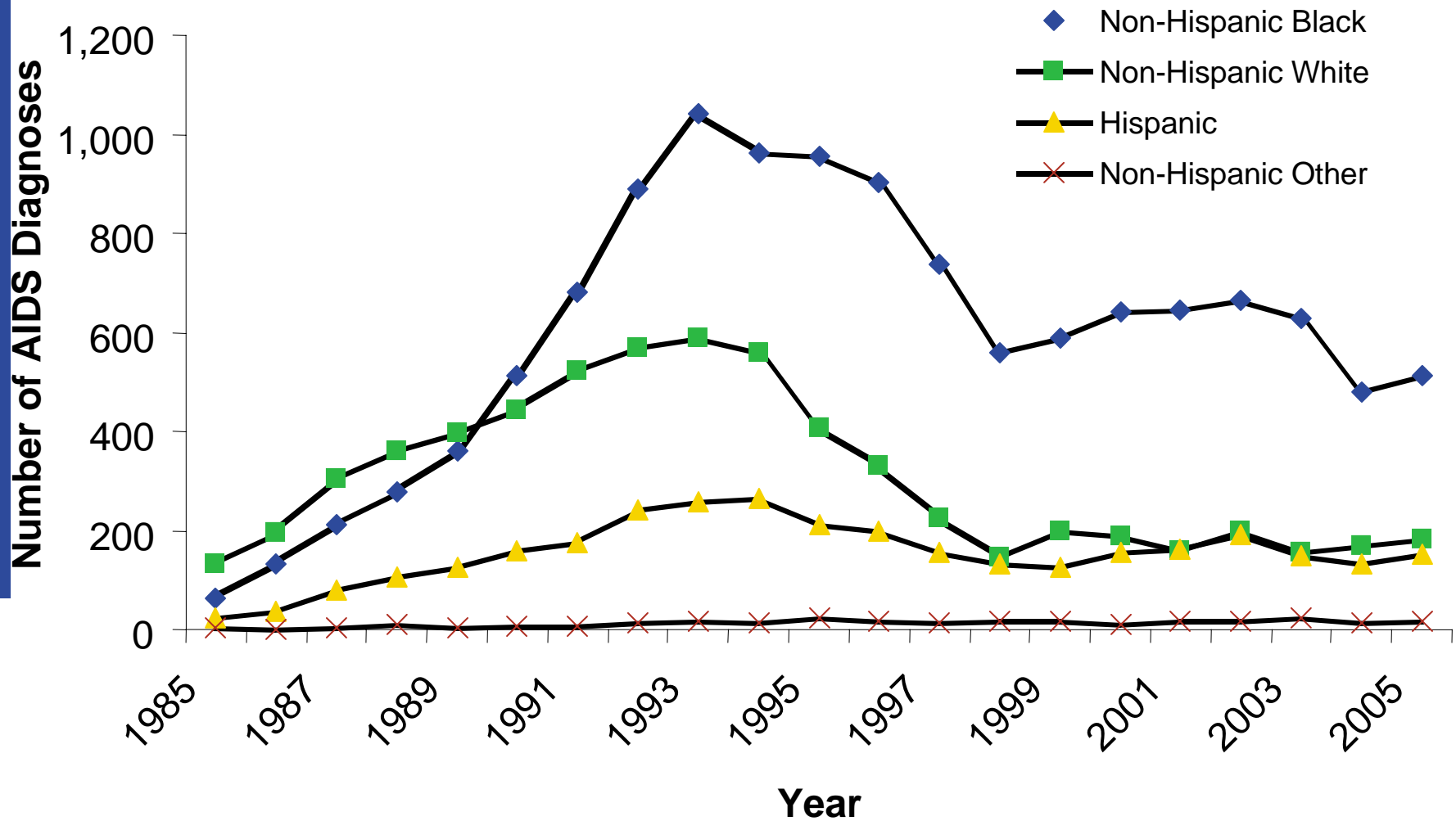
Number of Adults and Adolescents Living with HIV/AIDS by Age Group, 2001-2005, Chicago (as of 9/30/2006)



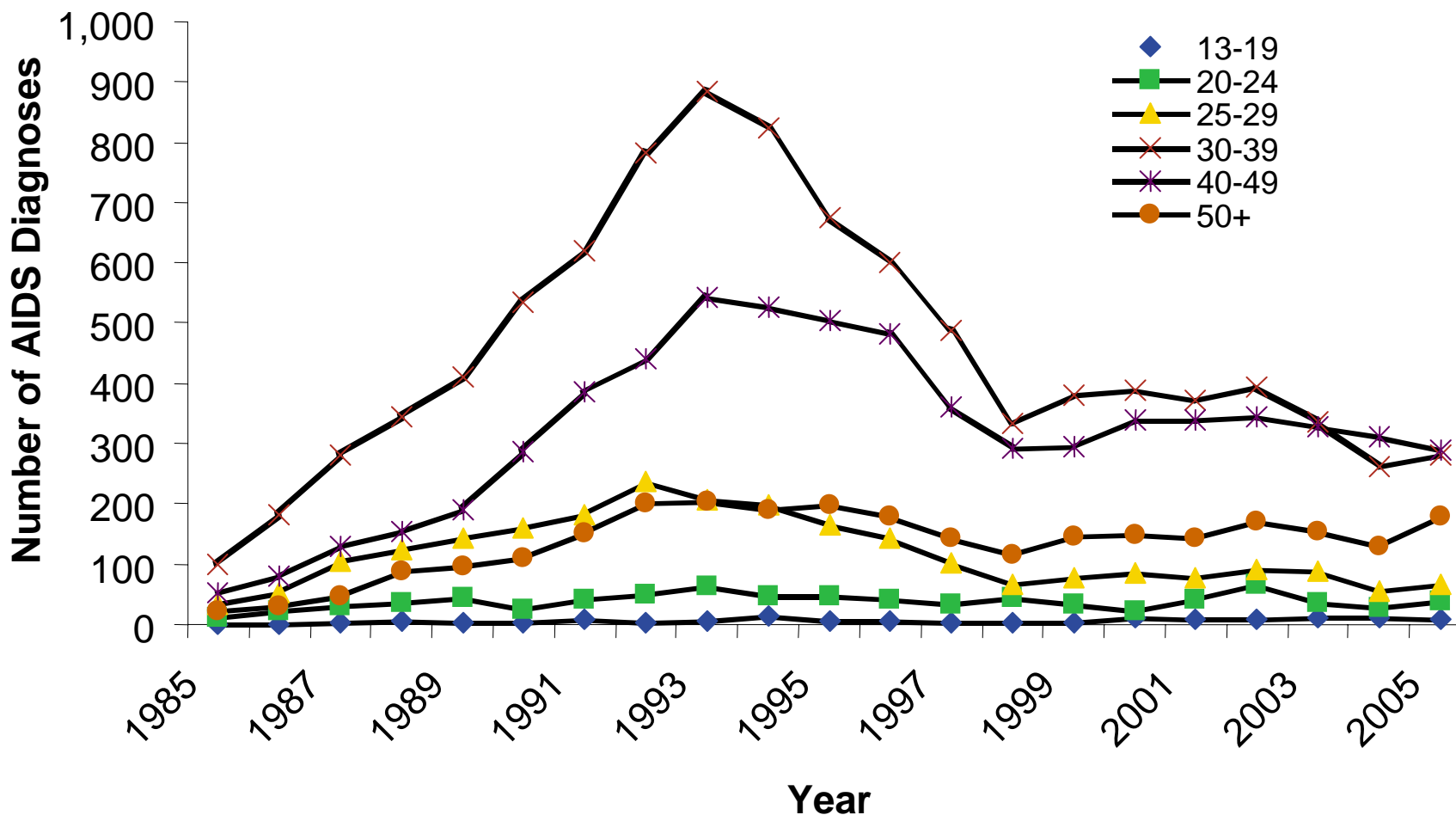
Number of Adult and Adolescent AIDS Diagnoses by Sex, 1985-2005, Chicago (as of 9/30/2006)



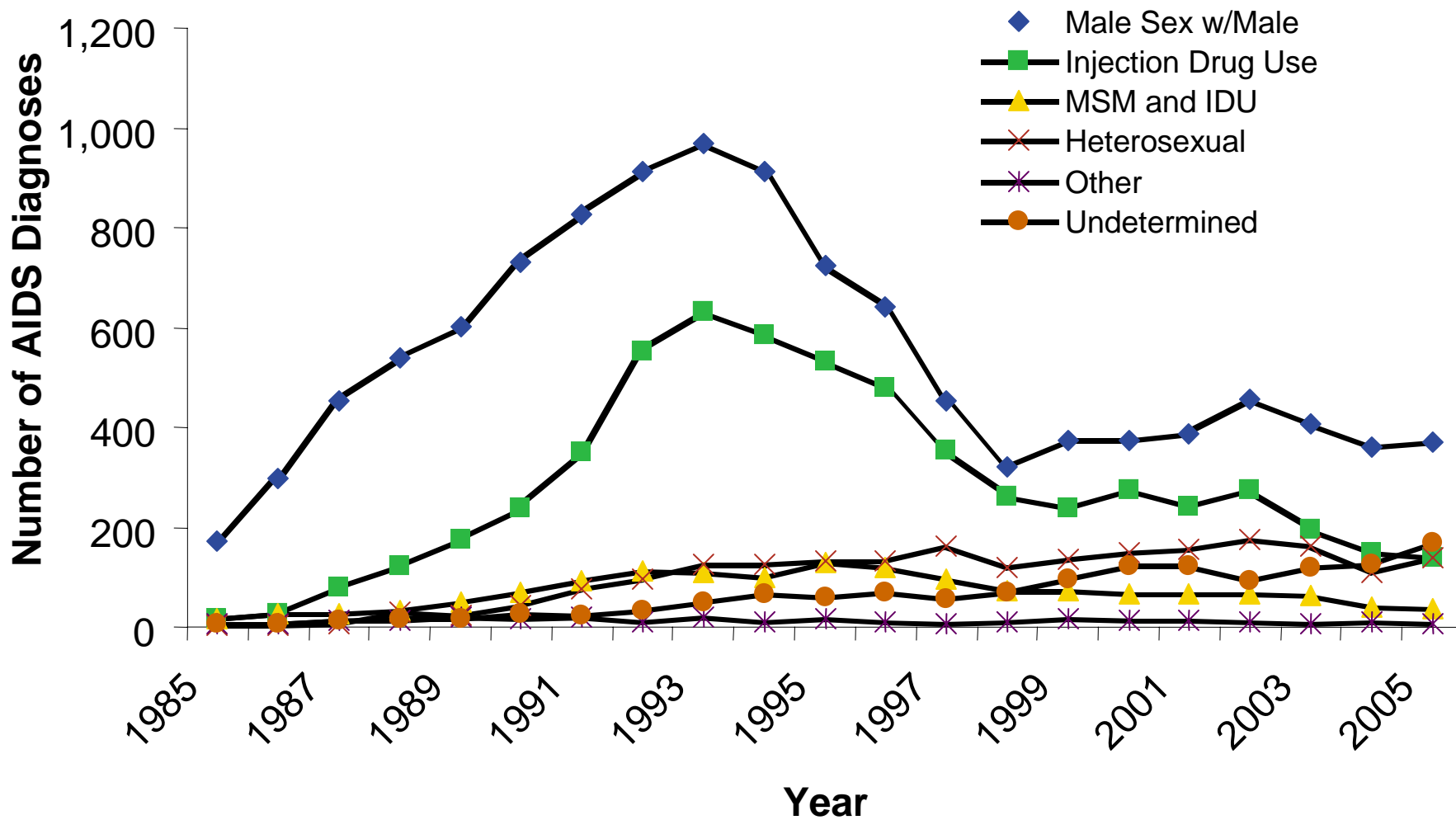
Number of Adult and Adolescent AIDS Diagnoses by Race/Ethnicity, 1985-2005, Chicago (as of 9/30/2006)



Number of Adult and Adolescent AIDS Diagnoses by Age Group, 1985-2005, Chicago (as of 9/30/2006)



Number of Adult and Adolescent AIDS Diagnoses by Mode of Transmission, 1985-2005, Chicago (as of 9/30/2006)



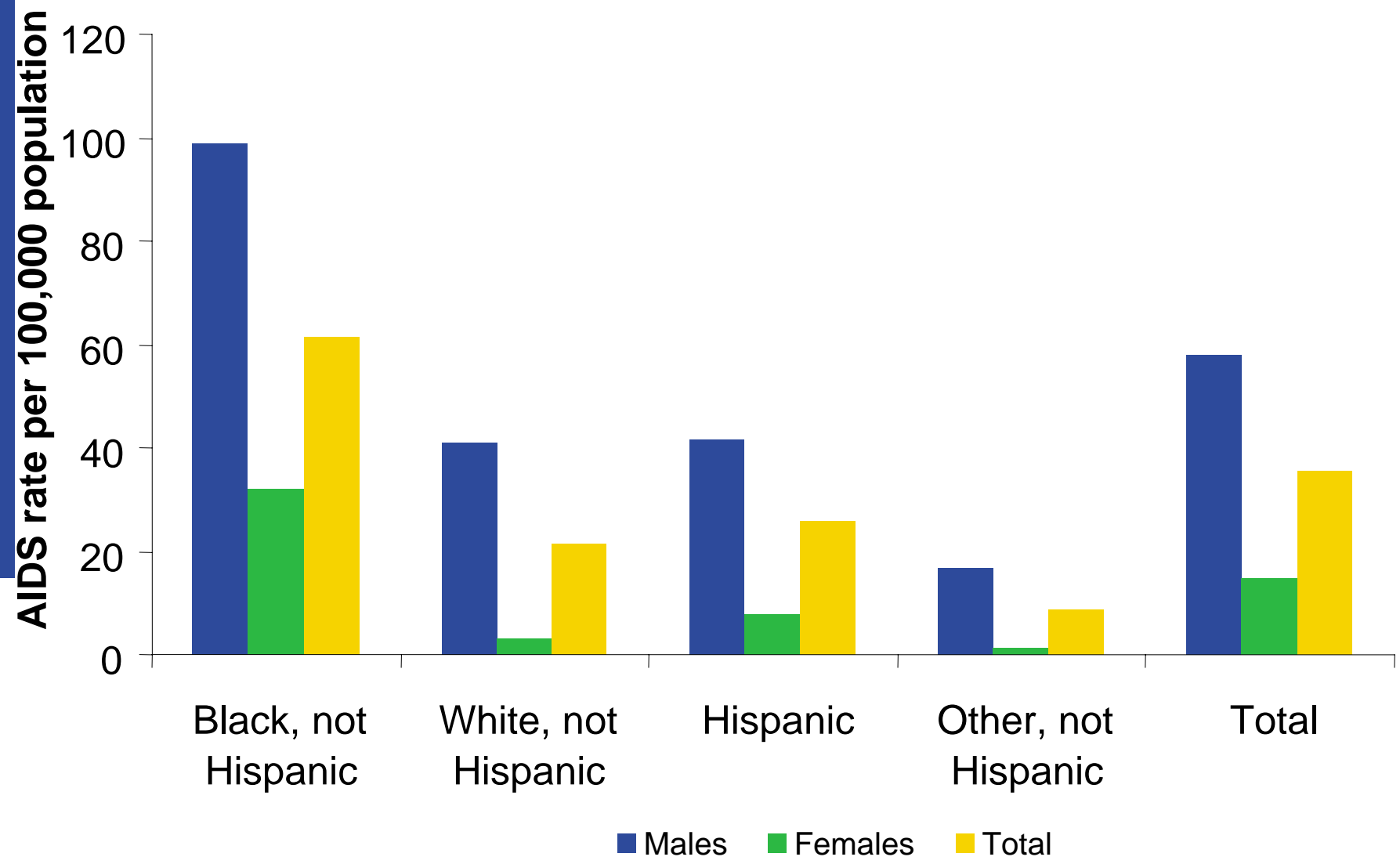
Proportion of Adult and Adolescent Male AIDS Diagnoses by Race/Ethnicity and Mode of Transmission, 2004-2005, Chicago

Mode of Transmission	Race/Ethnicity			
	NH Black	NH White	Hispanic	NH Other
Male Sex w/Male	43%	84%	58%	48%
Injection Drug Use	20%	4%	11%	8%
MSM and IDU	6%	5%	6%	12%
Heterosexual	8%	2%	10%	8%
Other	<1%	<1%	<1%	4%
Undetermined	21%	5%	14%	20%

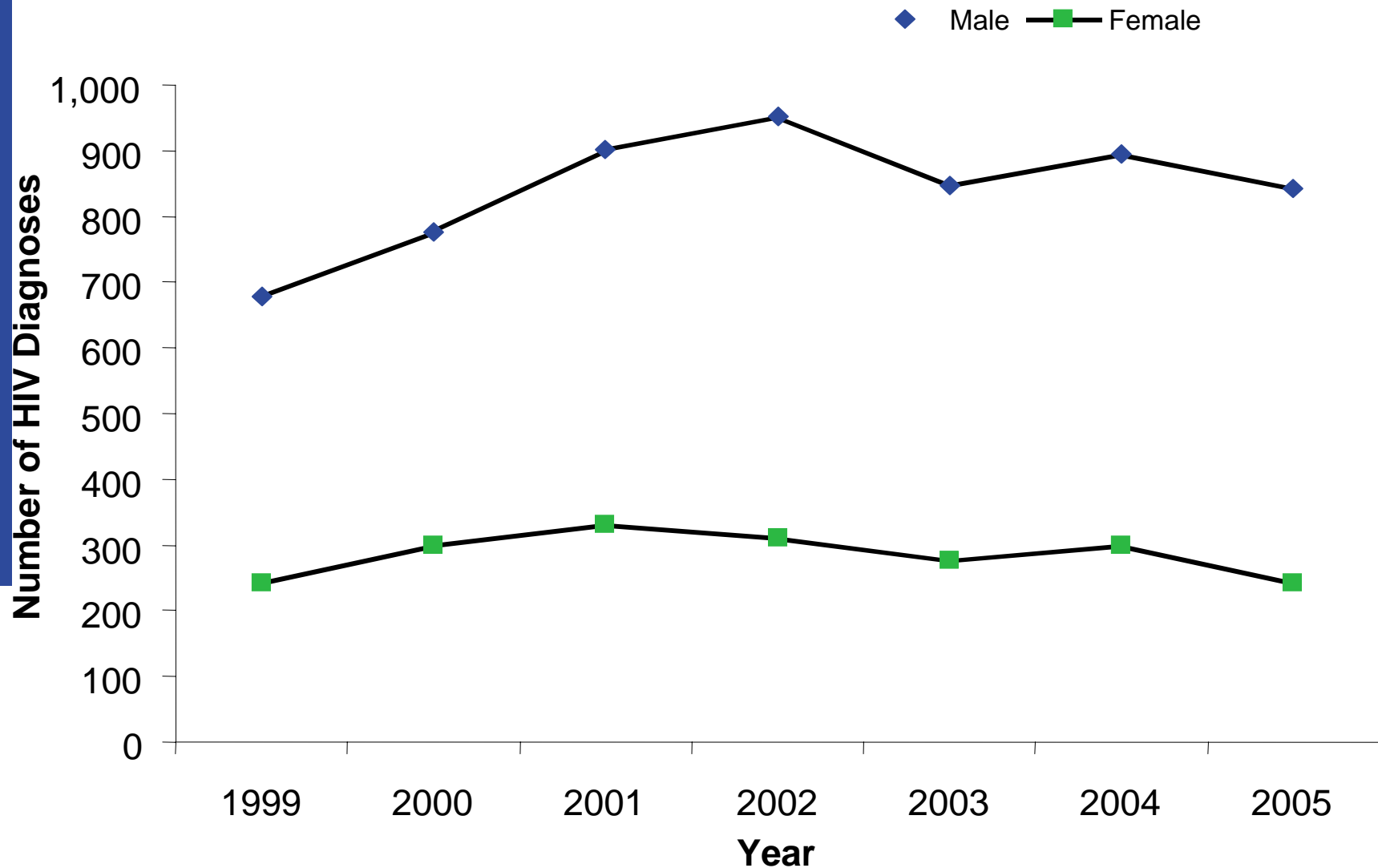
Proportion of Adult and Adolescent Female AIDS Diagnoses by Race/Ethnicity and Mode of Transmission, 2004-2005, Chicago (as of 9/30/2006)

Mode of Transmission	Race/Ethnicity			
	NH Black	NH White	Hispanic	NH Other
Injection Drug Use	29%	42%	26%	0%
Heterosexual	44%	38%	52%	50%
Other	2%	8%	0%	0%
Undetermined	25%	12%	21%	50%

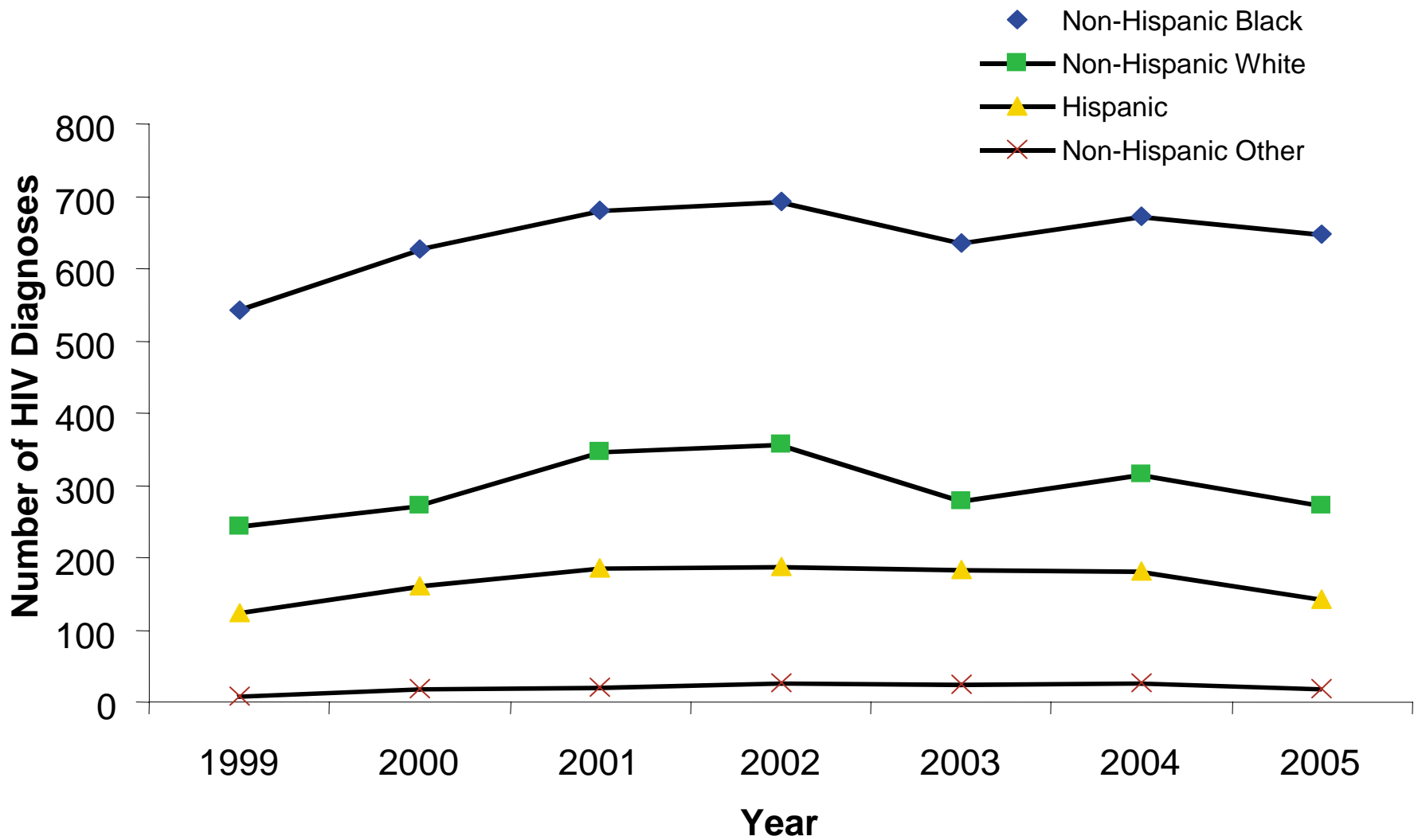
Average Annual Adult and Adolescent AIDS Rate by Sex and Race/Ethnicity Groups, 2004-2005, Chicago (as of 9/30/2006)



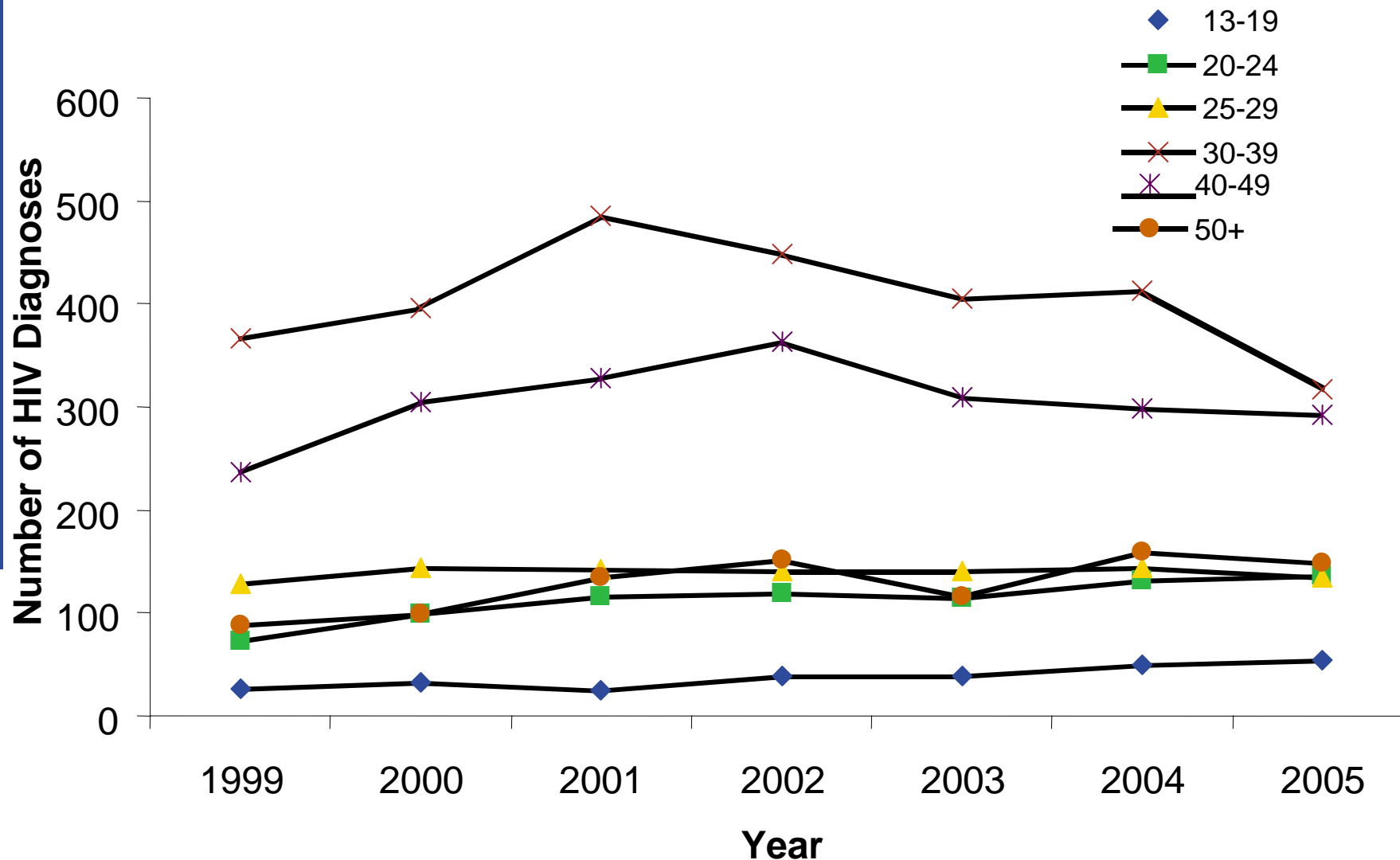
Number of Adult and Adolescent HIV Diagnoses by Sex, 1999-2005, Chicago (as of 9/30/2006)



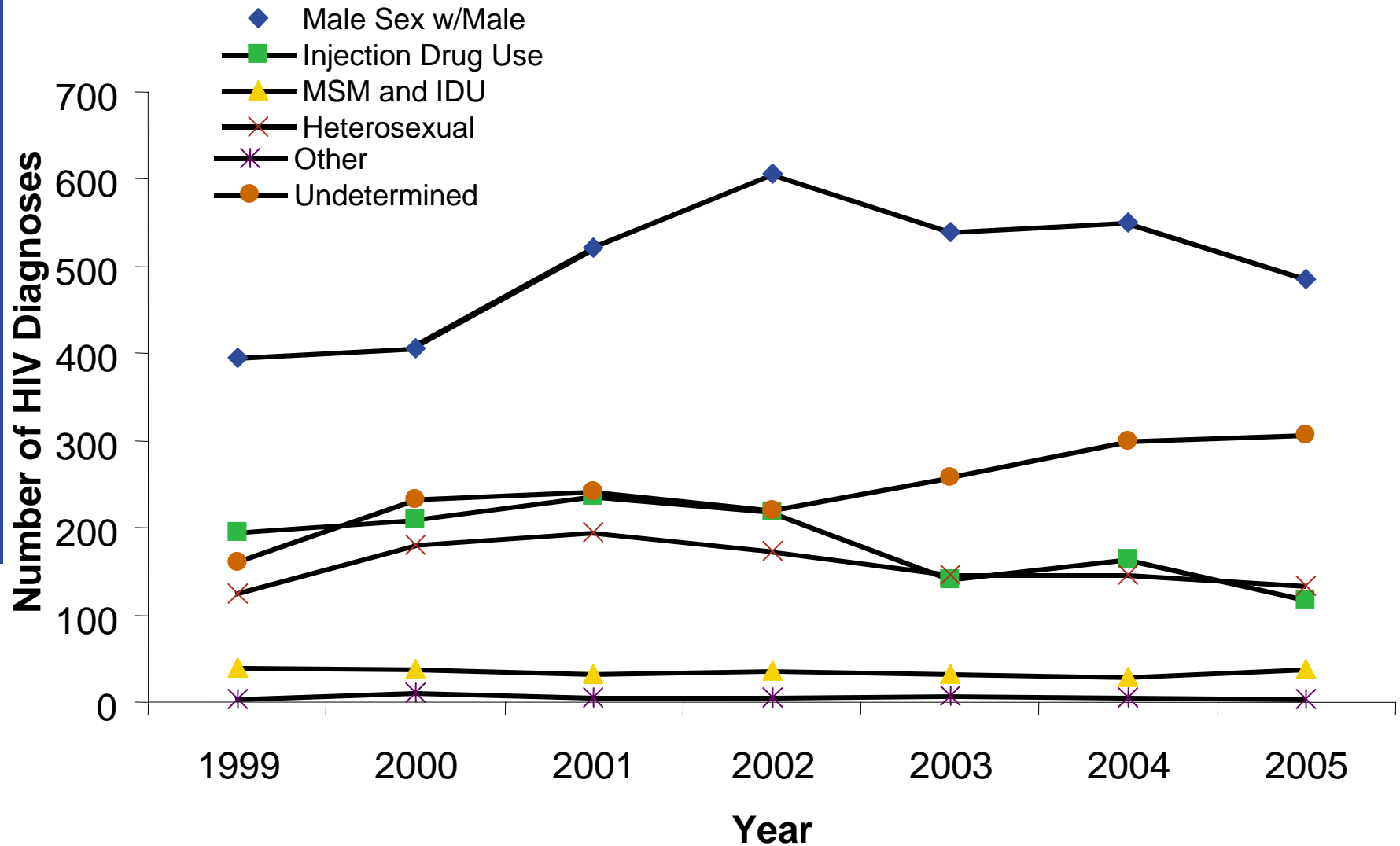
Number of Adult and Adolescent HIV Diagnoses by Race/Ethnicity, 1999-2005, Chicago (as of 9/30/2006)



Number of Adult and Adolescent HIV Diagnoses by Age Group, 1999-2005, Chicago (as of 9/30/2006)



Number of Adult and Adolescent HIV Diagnoses by Mode of Transmission, 1999-2005, Chicago (as of 9/30/2006)



Proportion of Adult and Adolescent Male HIV Diagnoses by Race/Ethnicity and Mode of Transmission, 2004-2005, Chicago (as of 9/30/2006)

Mode of Transmission	Race/Ethnicity			
	NH Black	NH White	Hispanic	NH Other
Male Sex w/Male	46%	79%	64%	60%
Injection Drug Use	14%	4%	8%	3%
MSM and IDU	2%	5%	4%	8%
Heterosexual	8%	2%	3%	3%
Other	<1%	<1%	<1%	0%
Undetermined	29%	10%	20%	27%

Proportion of Adult and Adolescent Female HIV Diagnoses by Race/Ethnicity and Mode of Transmission, 2004-2005, Chicago (as of 9/30/2006)

Mode of Transmission	Race/Ethnicity			
	NH Black	NH White	Hispanic	NH Other
Injection Drug Use	20%	32%	17%	22%
Heterosexual	35%	30%	48%	22%
Other	<1%	5%	0%	11%
Undetermined	45%	32%	36%	44%

Average Annual Adult and Adolescent HIV Rate by Sex and Race/Ethnicity Groups, 2004-2005, Chicago (as of 9/30/2006)

