



35th Ward Logan Square Blue Line Station Public Art Project

Request for Qualifications - DRAWING APPENDIX

Project Budget: \$195,000

Deadline: July 21, 2025, 11:59PM CST



Escalator Entry
God's Eye Motif, Zapotec (Mexico)

Public Art Base
Lenca Weaving (Honduras)

Family Friendly Seating Area 1
Butterfly Motif, Zapotec (Mexico)

Family Friendly Seating Area 2
Mundillo Motif (Puerto Rico)

Family Friendly Seating Area 3
Waves Motif, Quechua (Peru)

La Placita – with new CTA Canopy





CTA LOGAN SQUARE STATION

CTA LOGAN SQUARE STATION

202 KINGSWAY TO
St. Albert



CTA

5' LENGTH MAX.

5' WIDTH MAX.

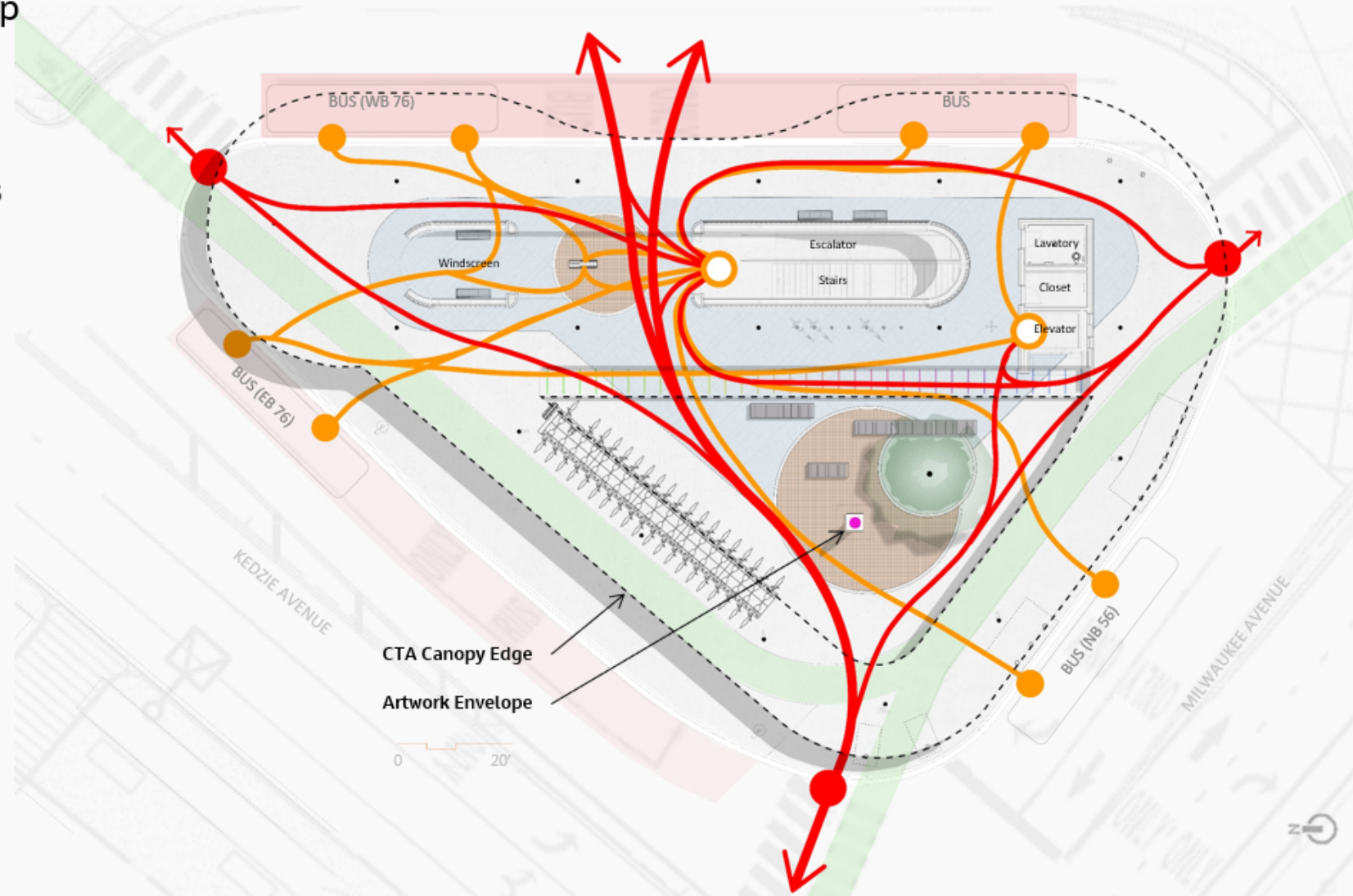
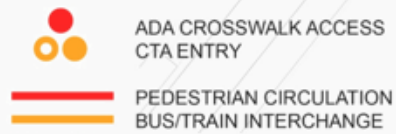
15' HEIGHT MAX.

CTA LOGAN SQ

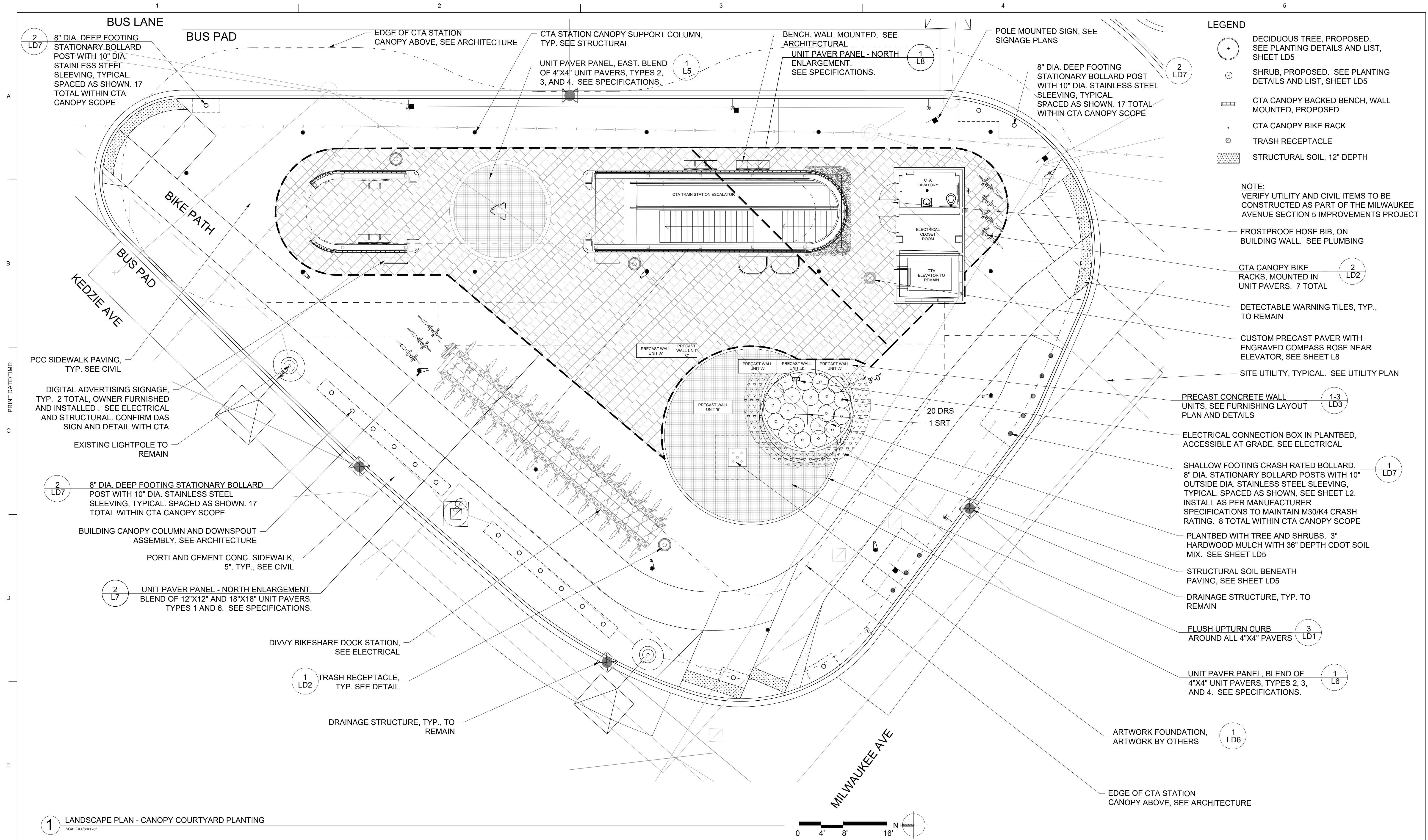
CONCRETE FOUNDATION, FLUSH WITH
SURROUNDING PLAZA PAVERS.
ARTWORK TO OBSCURE FOOTING
FROM VIEW (40"X40")

- Bollards positioned for bus stop operation
- ADA compliant routes between bus stops and CTA station entries

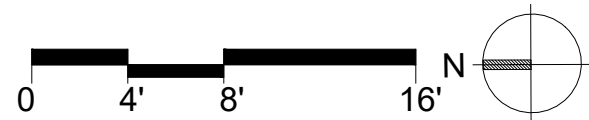
View to La Placita Sign



Site Plan – Pedestrian Circulation



1 LANDSCAPE PLAN - CANOPY COURTYARD PLANTING
SCALE=1/8"=1'-0"



	DRAWN	NDM					
	CHECKED	RS					
			4	NDM	05/16/2025	ISSUED FOR BID	
			3	NDM	02/14/2025	95% FINAL	
			2	NDM	10/11/2024	95% DESIGN DEVELOPMENT	
	DATE	05/16/2025	1	NDM	05/10/2024	60% DESIGN DEVELOPMENT	
			NO.	ISSUED BY	DATE	REVISION	
REVISION SCHEDULE							

CITY OF CHICAGO
DEPARTMENT OF TRANSPORTATION
DIVISION OF PROJECT DEVELOPMENT

Project Title:
LOGAN SQUARE BLUE LINE STATION
HEADHOUSE RECONSTRUCTION

Jacobs

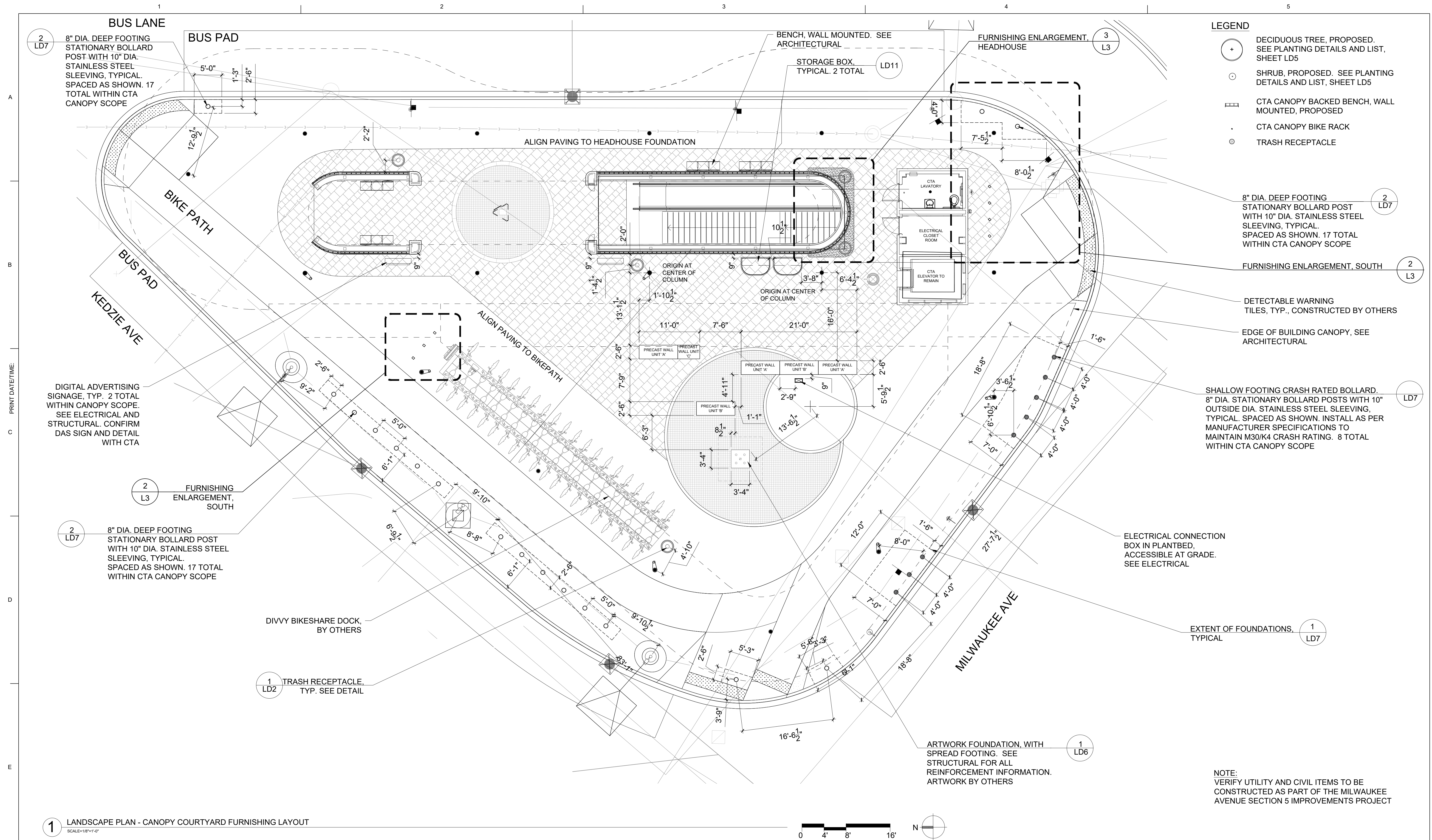
525 W. Monroe Suite 200
Chicago, Illinois 60661
Telephone: 312.251.3000
Fax: 312.251.3015

Drawing Title:
LANDSCAPE PLAN -
CANOPY SITE PLANTING

DWG. 19 of 185

Drawing No.:

L1



DRAWN	NDM				
CHECKED	RS				
		4	NDM	05/16/2025	ISSUED FOR BID
		3	NDM	02/14/2025	95% FINAL
DATE	05/16/2025	2	NDM	10/11/2024	95% DESIGN DEVELOPMENT
		1	NDM	05/10/2024	60% DESIGN DEVELOPMENT
		NO.	ISSUED BY	DATE	REVISION
		REVISION SCHEDULE			

CITY OF CHICAGO
DEPARTMENT OF TRANSPORTATION
DIVISION OF PROJECT DEVELOPMENT

Project Title:

LOGAN SQUARE BLUE LINE STATION
HEADHOUSE RECONSTRUCTION

Jacobs

525 W. Monroe Suite 200
Chicago, Illinois 60661
Telephone: 312.251.3000
Fax: 312.251.3015

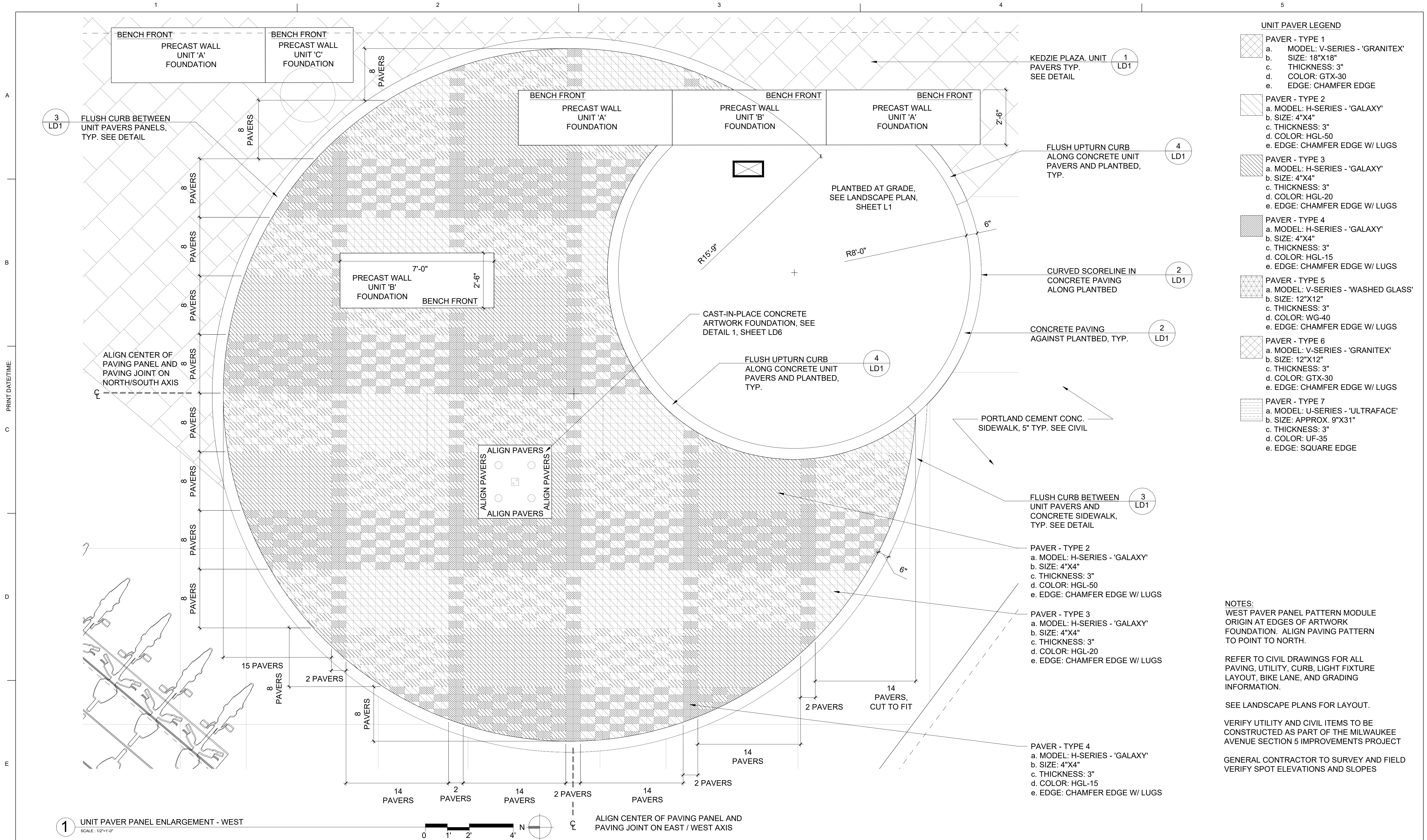
Drawing Title:

LANDSCAPE PLAN -
FURNISHING LAYOUT - SITE

DWG. 20 of 185

Drawing No.:

2



- UNIT PAVER LEGEND**
- PAVER - TYPE 1
 - a. MODEL: V-SERIES - 'GRANITEX'
 - b. SIZE: 18"X18"
 - c. THICKNESS: 3"
 - d. COLOR: GTX-30
 - e. EDGE: CHAMFER EDGE
 - PAVER - TYPE 2
 - a. MODEL: H-SERIES - 'GALAXY'
 - b. SIZE: 4"X4"
 - c. THICKNESS: 3"
 - d. COLOR: HGL-50
 - e. EDGE: CHAMFER EDGE W/ LUGS
 - PAVER - TYPE 3
 - a. MODEL: H-SERIES - 'GALAXY'
 - b. SIZE: 4"X4"
 - c. THICKNESS: 3"
 - d. COLOR: HGL-20
 - e. EDGE: CHAMFER EDGE W/ LUGS
 - PAVER - TYPE 4
 - a. MODEL: H-SERIES - 'GALAXY'
 - b. SIZE: 4"X4"
 - c. THICKNESS: 3"
 - d. COLOR: HGL-15
 - e. EDGE: CHAMFER EDGE W/ LUGS
 - PAVER - TYPE 5
 - a. MODEL: V-SERIES - 'WASHED GLASS'
 - b. SIZE: 12"X12"
 - c. THICKNESS: 3"
 - d. COLOR: WG-40
 - e. EDGE: CHAMFER EDGE W/ LUGS
 - PAVER - TYPE 6
 - a. MODEL: V-SERIES - 'GRANITEX'
 - b. SIZE: 12"X12"
 - c. THICKNESS: 3"
 - d. COLOR: GTX-30
 - e. EDGE: CHAMFER EDGE W/ LUGS
 - PAVER - TYPE 7
 - a. MODEL: U-SERIES - 'ULTRAFACE'
 - b. SIZE: APPROX. 9"X31"
 - c. THICKNESS: 3"
 - d. COLOR: UF-35
 - e. EDGE: SQUARE EDGE

NOTES:
WEST PAVER PANEL PATTERN MODULE ORIGIN AT EDGES OF ARTWORK FOUNDATION. ALIGN PAVING PATTERN TO POINT TO NORTH.

REFER TO CIVIL DRAWINGS FOR ALL PAVING, UTILITY, CURB, LIGHT FIXTURE LAYOUT, BIKE LANE, AND GRADING INFORMATION.

SEE LANDSCAPE PLANS FOR LAYOUT.

VERIFY UTILITY AND CIVIL ITEMS TO BE CONSTRUCTED AS PART OF THE MILWAUKEE AVENUE SECTION 5 IMPROVEMENTS PROJECT

GENERAL CONTRACTOR TO SURVEY AND FIELD VERIFY SPOT ELEVATIONS AND SLOPES

1 UNIT PAVER PANEL ENLARGEMENT - WEST		SCALE : 1/2"=1'-0"	
DRAWN	NDM		
CHECKED	RS		
DATE	05/16/2025		
		4	NDM 05/16/2025 ISSUED FOR BID
		3	NDM 02/14/2025 95% FINAL
		2	NDM 10/11/2024 95% DESIGN DEVELOPMENT
		1	NDM 05/10/2024 60% DESIGN DEVELOPMENT
NO.	ISSUED BY	DATE	REVISION
REVISION SCHEDULE			

CITY OF CHICAGO
DEPARTMENT OF TRANSPORTATION
DIVISION OF PROJECT DEVELOPMENT

Project Title:
LOGAN SQUARE BLUE LINE STATION
HEADHOUSE RECONSTRUCTION

Jacobs

525 W. Monroe Suite 200
Chicago, Illinois 60661
Telephone: 312.251.3000
Fax: 312.251.3015

Drawing Title:
LANDSCAPE PLAN -
PAVING LAYOUT – DETAIL

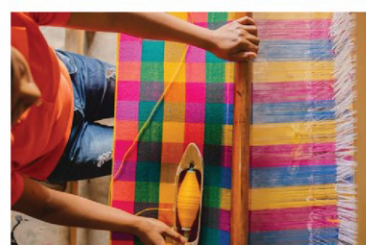
DWG. 24 of 185

Drawing No.:
L6

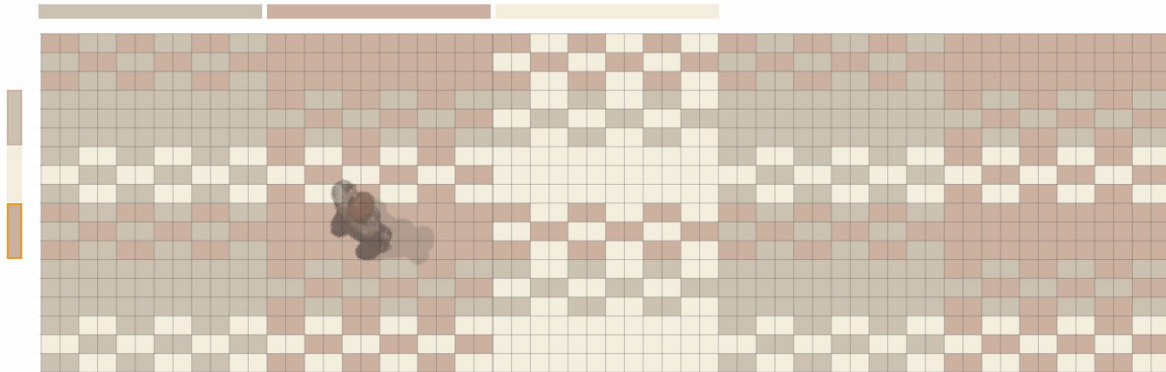
4" x 4" pavers in
all Family-friendly
seating areas



La Placita Family-Friendly Seating Areas



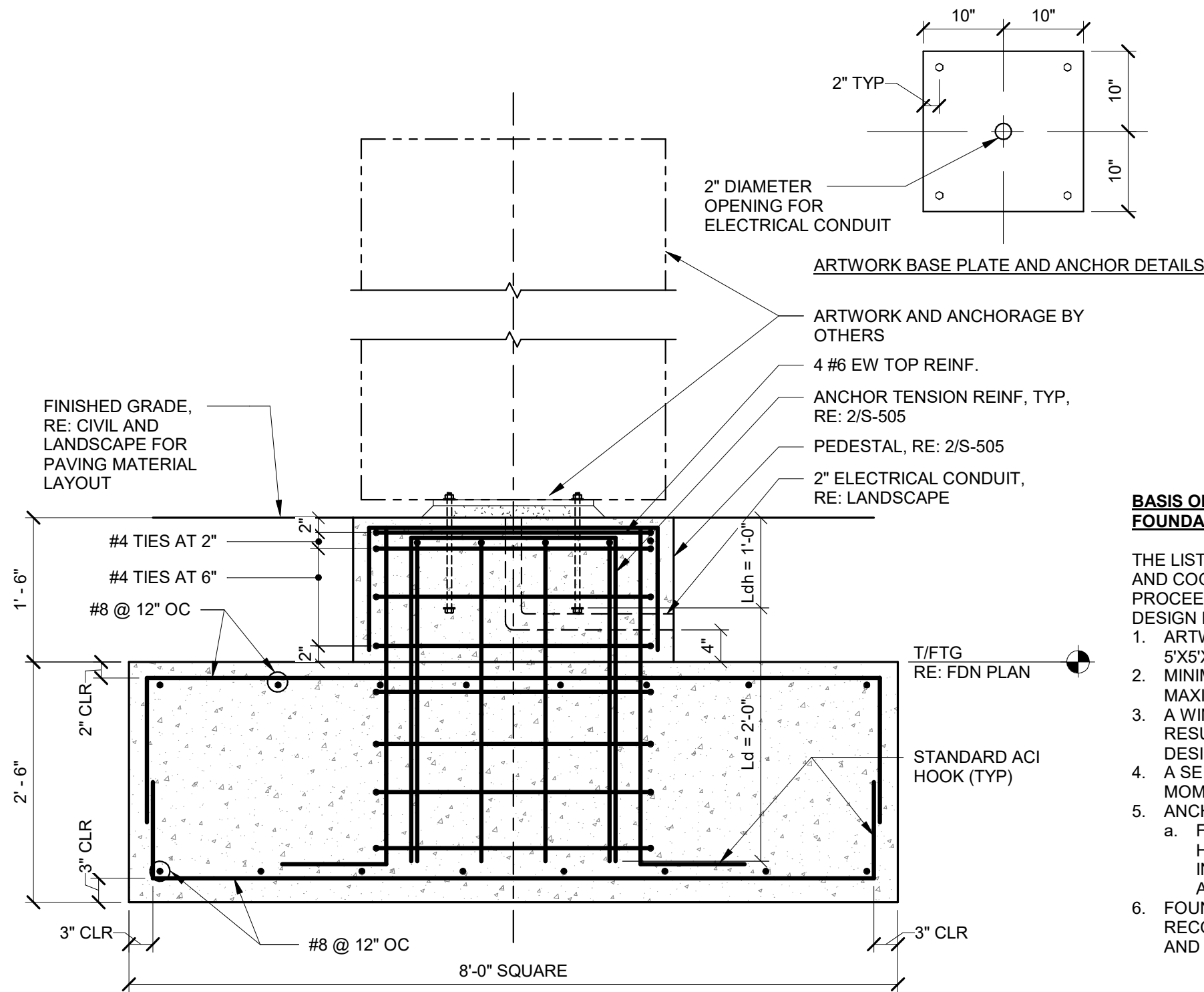
Lenca Weaving, Honduras



Paving Modules

Lenca Paving Motif

A
5/16/2025 3:25:51 PM
PRINT DATE/TIME:
C
Autodesk Docs://US_IL_C0926000_CTA_Logan Square Bus Canopy/0926000 - CTA Logan Square Bus Canopy_STR.rvt

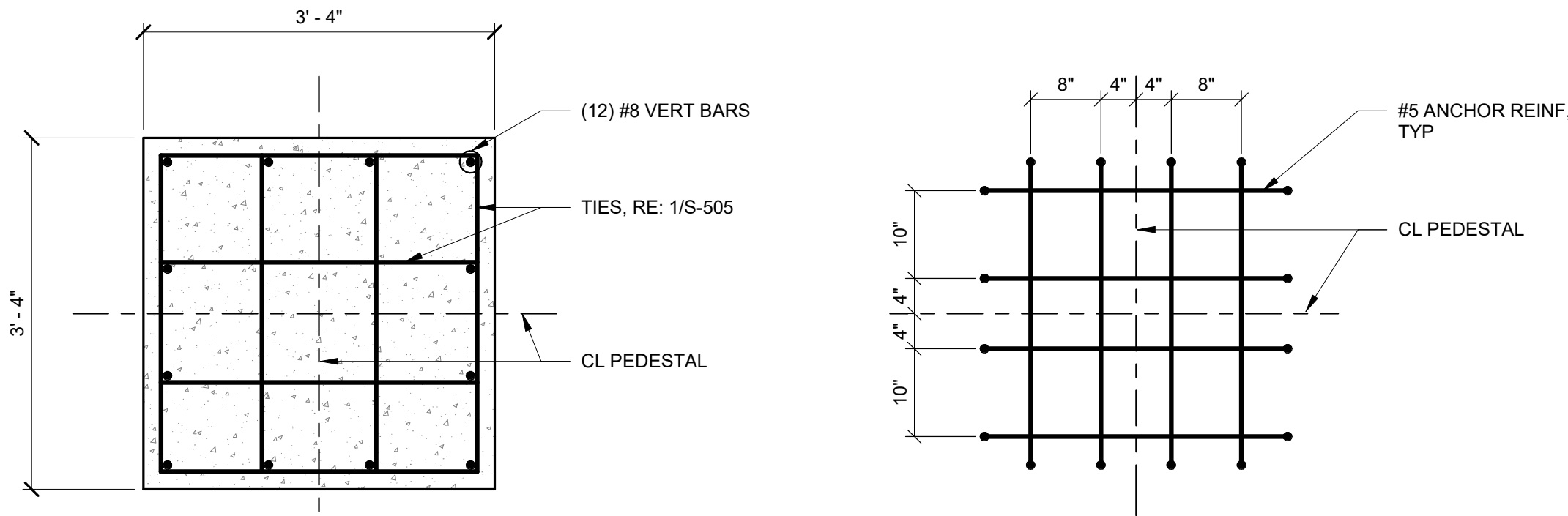


1 ARTWORK FOUNDATION
3/4" = 1'-0"

BASIS OF DESIGN FOR ARTWORK ANCHORAGE DESIGN AND FOUNDATION DESIGN

THE LISTED BASIS OF DESIGN ASSUMPTIONS NEEDS TO BE CONFIRMED AND COORDINATED WITH THE ARTWORK PROVIDED BEFORE PROCEEDING WITH PROCUREMENT AND CONSTRUCTION. BASIS OF DESIGN LOADS ARE UNFACTORED LOADS.

- ARTWORK DESIGN IS IN PROGRESS, ARTWORK WILL FIT INSIDE THE 5'X5'X15' ENVELOPE ABOVE-THE-GROUND.
- MINIMUM WEIGHT OF THE ARTWORK IS ASSUMED TO BE 5000 LB. AND MAXIMUM WEIGHT IS 8000 LB.
- A WIND LOAD OF 26PSF ON THE ARTWORK IS CONSIDERED WHICH RESULTED IN 2.1K MAX SHEAR AND 20.8 K-FT MAX MOMENT TO DESIGN THE ANCHORAGE AND FOUNDATION.
- A SEISMIC REACTION OF 0.55K MAX SHEAR AND 5.5 K-FT MAX MOMENT TO DESIGN THE ANCHORAGE AND FOUNDATION.
- ANCHORAGE DESIGN
 - FOR THE ABOVE LOADS AND ANCHOR SPACING, 1" DIAMETER HILTI HAS V-36 ANCHOR RODS MIN WITH 9" MINIMUM EMBEDMENT INTO HILTI HIT-RE 500 V3 ADHESIVE WITH 9" MIN EMBEDMENT (OR APPROVED EQUAL) IS ASSUMED
- FOUNDATION DESIGN IS BASED ON GEOTECHNICAL RECOMMENDATIONS ARE BASED ON 1 KSF NET BEARING PRESSURE AND 1" TOTAL SETTLEMENT AND 1/2" DIFFERENTIAL SETTLEMENT.



2 ARTWORK CONCRETE PEDESTAL REINFORCEMENT DETAIL
3/4" = 1'-0"

DRAWN	NDT				
CHECKED	AHS				
DATE	05/16/2025				
		NO.	ISSUED BY	DATE	REVISION
REVISION SCHEDULE					

CITY OF CHICAGO
DEPARTMENT OF TRANSPORTATION
DIVISION OF PROJECT DEVELOPMENT

Project Title:
LOGAN SQUARE BLUE LINE STATION
HEADHOUSE RECONSTRUCTION

Jacobs
525 W. Monroe Suite 200
Chicago, Illinois 60661
Telephone: 312.251.3000
Fax: 312.251.3015

Drawing Title:
FOUNDATION DETAILS

DWG. 67 of 185

Drawing No.:
S-505

1

2

3

4

5

A

B

C

D

E

SW1

SW2

ILLUMINATED SIGNAGE

Milwaukee Avenue

A.F.G.
13'-0"

BOTTOM LOWER CANOPY
11'-9"

1

COURTYARD EXTERIOR ELEVATION - SOUTH

1/8" = 1' 0"

NW5

NW4

ILLUMINATED SIGNAGE

Kedzie Avenue

A.F.G.
13'-0"

BOTTOM LOWER CANOPY
11'-9"

2

COURTYARD EXTERIOR ELEVATION - WEST

1/8" = 1' 0"

3

4

5

ILLUMINATED SIGNAGE

cta Logan Square station

A.F.G.
13'-0"

BOTTOM LOWER CANOPY
11'-9"

3

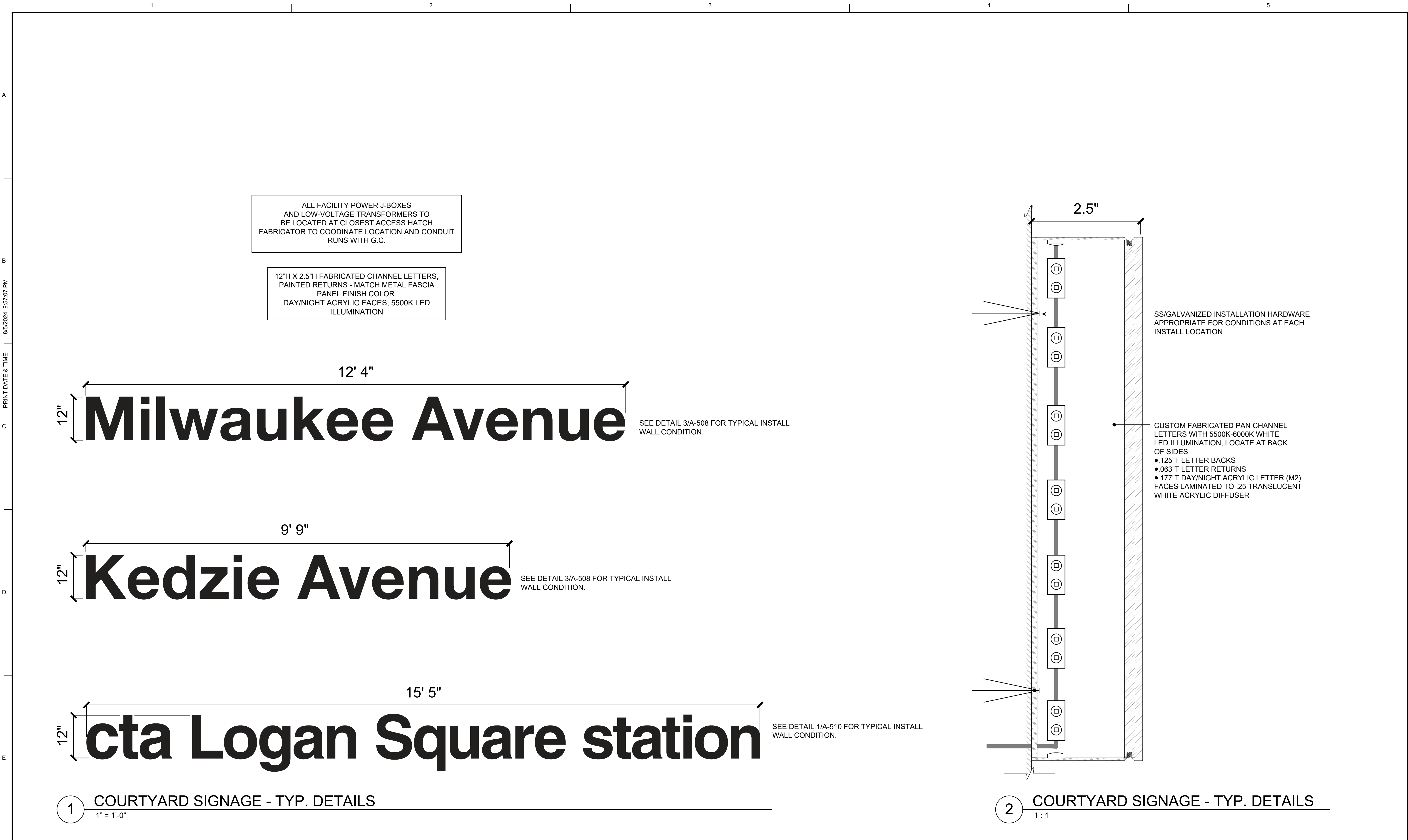
COURTYARD EXTERIOR ELEVATION - EAST

1/8" = 1' 0"

ALL FACILITY POWER J-BOXES
AND LOW-VOLTAGE TRANSFORMERS TO
BE LOCATED AT CLOSEST ACCESS HATCH
FABRICATOR TO COODINATE LOCATION AND CONDUIT
RUNS WITH G.C.

12"H X 2.5"H FABRICATED CHANNEL LETTERS,
PAINTED RETURNS - MATCH METAL FASCIA
PANEL FINISH COLOR.
DAY/NIGHT ACRYLIC FACES, 5500K LED
ILLUMINATION
SEE AG-016 FOR TYPICAL DETAILS

File Path	DRAWN DDK					CITY OF CHICAGO DEPARTMENT OF TRANSPORTATION DIVISION OF PROJECT DEVELOPMENT	Project Title: LOGAN SQUARE BLUE LINE STATION HEADHOUSE RECONSTRUCTION		Drawing Title: COURTYARD SIGNAGE - ELEVATIONS		Drawing No.: AG-016
	CHECKED BJ										
			4	DDK	05/16/2025		ISSUED FOR BID				
			3	DDK	02/14/2025		95% FINAL				
			2	DDK	10/11/2024		95% DESIGN DEVELOPMENT				
	DATE 05/16/2025		1	DDK	05/10/2024		60% DESIGN DEVELOPMENT				
			NO.	ISSUED BY	DATE		REVISION				
			REVISION SCHEDULE								
							Jacobs		525 W. Monroe Suite 200 Chicago, Illinois 60661 Telephone: 312.251.3000 Fax: 312.251.3015		
									DWG. 132 of 185		



File Path	DRAWN	DDK				CITY OF CHICAGO DEPARTMENT OF TRANSPORTATION DIVISION OF PROJECT DEVELOPMENT	Project Title: LOGAN SQUARE BLUE LINE STATION HEADHOUSE RECONSTRUCTION	Drawing Title: COURTYARD SIGNAGE - 2		Drawing No.: AG-017
	CHECKED	BJ								
			4	DDK	05/16/2025		ISSUED FOR BID			
			3	DDK	02/14/2025		95% FINAL			
			2	DDK	10/11/2024		95% DESIGN DEVELOPMENT			
	DATE	05/16/2025	1	DDK	05/10/2024		60% DESIGN DEVELOPMENT			
			NO.	ISSUED BY	DATE		REVISION			
			REVISION SCHEDULE							
							Jacobs	525 W. Monroe Suite 200 Chicago, Illinois 60661 Telephone: 312.251.3000 Fax: 312.251.3015		DWG. 133 of 185

Autodesk Docs/US_IL_C9X26000_CTA_Logan Square Bus Canopy/C9X26000 - CTA Logan Square Bus Canopy_ELC.rvt D

5/14/2025 2:34:39 PM

PRINT DATE/TIME:

C

1

2

3

4

5

GENERAL SHEET NOTES

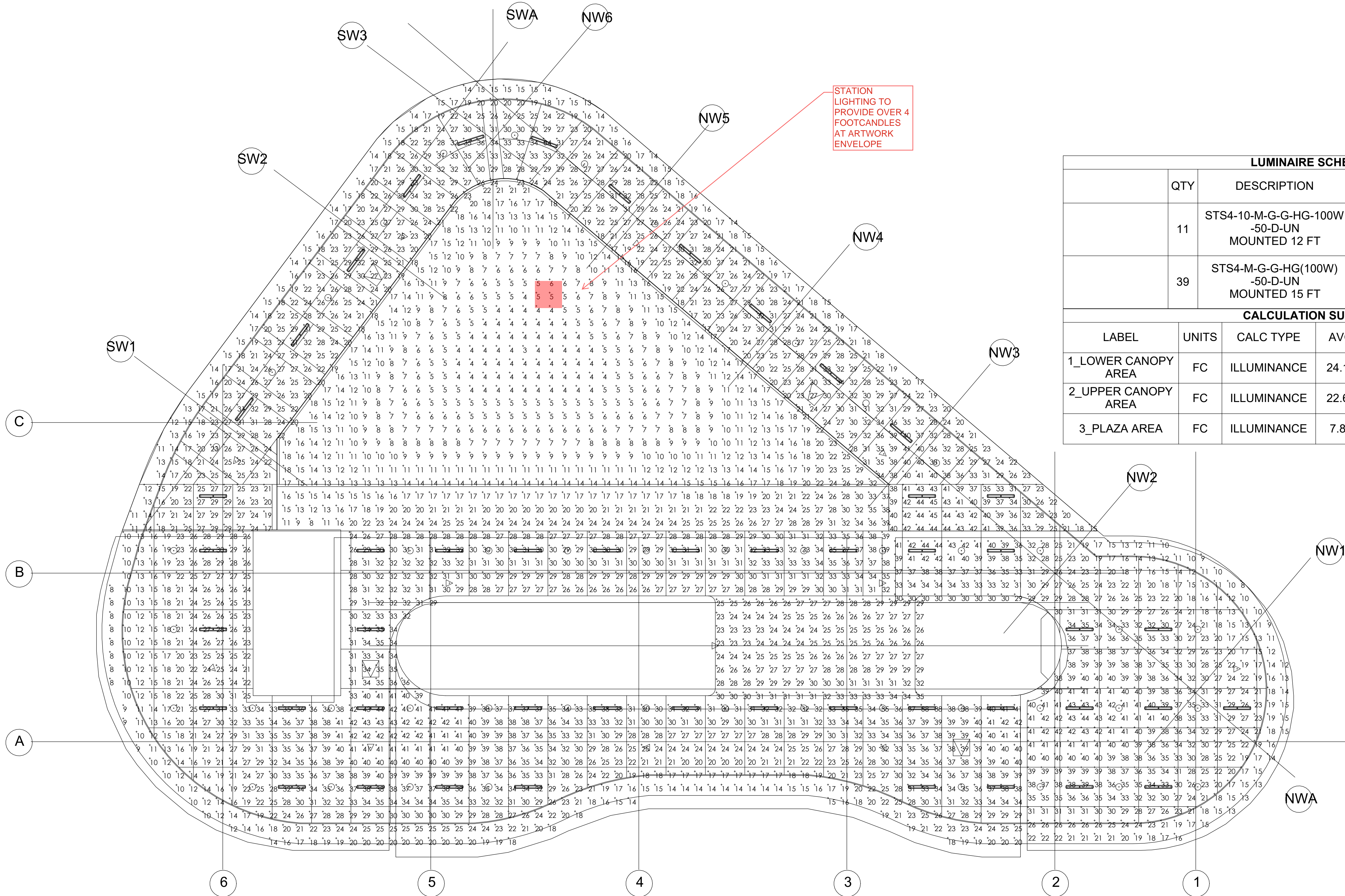
- REFER TO E-001 AND E-002 FOR GENERAL NOTES, ABBREVIATIONS, AND SYMBOLS.
- REFER TO E-601 FOR WIRING DIAGRAMS.
- REFER TO E-701 AND E-702 FOR LIGHTING AND PANEL SCHEDULES.

LUMINAIRE SCHEDULE

	QTY	DESCRIPTION	TAG	LLF	LUMINAIRE LUMENS	LUMINAIRE WATTS
	11	STS4-10-M-G-G-HG-100W -50-D-UN MOUNTED 12 FT	L	0.8	9000	100
	39	STS4-M-G-G-HG(100W) -50-D-UN MOUNTED 15 FT	L	0.8	9000	100

CALCULATION SUMMARY

LABEL	UNITS	CALC TYPE	AVG	MAX	MIN	AVG/ MIN	MAX/ MIN
1_LOWER CANOPY AREA	FC	ILLUMINANCE	24.11	34.70	14.70	1.94	2.36
2_UPPER CANOPY AREA	FC	ILLUMINANCE	22.60	34.90	6.60	3.42	5.29
3_PLAZA AREA	FC	ILLUMINANCE	7.82	21.70	3.00	2.61	7.23



1

PHOTOMETRIC CALCULATION - CANOPY

NTS

DRAWN	HMT				
CHECKED	AFR				
DATE	05/16/2025	4	AAA	05/16/2025	ISSUED FOR BID
		3	AAA	02/14/2025	95% FINAL
		2	AAA	10/11/2024	95% DESIGN DEVELOPMENT
		1	AAA	05/10/2024	60% DESIGN DEVELOPMENT
		NO.	ISSUED BY	DATE	REVISION

CITY OF CHICAGO

DEPARTMENT OF TRANSPORTATION

DIVISION OF PROJECT DEVELOPMENT

Project Title:

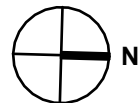
LOGAN SQUARE BLUE LINE STATION
HEADHOUSE RECONSTRUCTION



4323 W. Irving Park Road
Chicago, Illinois 60641
Telephone: 773.657.3300
Fax: 773.657.3330

Drawing Title:

LIGHTING PHOTOMETRIC 1 OF 2



Drawing No.:

E-901

DWG. 174 of 185