

DEADLINE: MARCH 5, 2023, 11:59PM CST

INTRODUCTION

The Chicago Department of Cultural Affairs and Special Events (DCASE), the Chicago Department of Transportation (CDOT) and the Chicago Transit Authority (CTA) invite professional artists and artist teams with a demonstrated history of completing complex, permanent, outdoor public art projects to submit their qualifications for a **\$750,000** public art commission for the new CTA State and Lake Station to be built on the Loop elevated tracks at the intersection of State and Lake Street in downtown Chicago. Construction is scheduled to begin in Summer 2023.

PERCENT FOR ART & CAPITAL PLAN

This project is funded by CDOT under the Percent for Art Ordinance and the City of Chicago's Capital Plan. In 1978, Chicago's City Council unanimously approved an ordinance that requires municipal construction projects to include the commissioning or purchase of on-site artworks that then become part of the citywide public art collection. DCASE through the Public Art Program administers the Chicago Public Art Collection and implements the City's Percent for Art Ordinance. The Collection provides the citizens of Chicago with an improved public environment and enhances city buildings and spaces with quality works of art by professional artists. The Chicago Public Art Collection includes more than 500 works of art exhibited in over 150 municipal facilities around the city, such as police stations, libraries, and CTA stations.

Mayor Lori E. Lightfoot announced a Five-Year Capital Plan to improve the quality of life for all Chicago residents by investing in infrastructure and City facilities in all 77 communities. The Five-Year Capital Plan promotes equity, public safety and year-to-year project continuity by funding improvements in every neighborhood. In conjunction with the Five-Year Capital Plan, the City will announce a Public Art and Infrastructure Program that will integrate public art into capital and infrastructure projects. Much like the transformative work of the W.P.A federal art programs, this project will employ artists and cultural workers and contribute to the economic vitality of neighborhoods.

SUMMARY OF THE OPPORTUNITY AND SITE

The City is building a completely new State/Lake Station for the CTA to provide a fully accessible facility that services five train lines. The new State/Lake CTA station will replace the more than 100-year-old existing structure with a modern, fully accessible rail hub with wider platforms and a host of customer amenities built to 21st Century design standards. It includes wide balconies open to the public, facing north and south, creating scenic overlooks of State Street.

The current State/Lake station was built in 1895, as part of the original Loop elevated, and in 2019 was the second-busiest station on the Loop 'L', with more than 3.7 million annual entries. The station serves five of the CTA's eight rail lines. The new design features a blend of old and new, retaining original design elements such as salvaged posts and railings that frame the vending and Customer Assistance kiosks.

The station's design and construction process are being led by CDOT on behalf of the CTA. The station design, by TranSystems / Skidmore, Owings & Merrill (SOM), features platforms that are double the current width, to better accommodate customers. It also includes a full-coverage, glass canopy to protect customers from rain and snow, as well as a walkway connecting the inner and outer platforms.

The project will add elevators — there are currently none — to make the station fully accessible. The new station will also improve connectivity between the elevated lines of the downtown Loop and the underground Red Line on State Street.

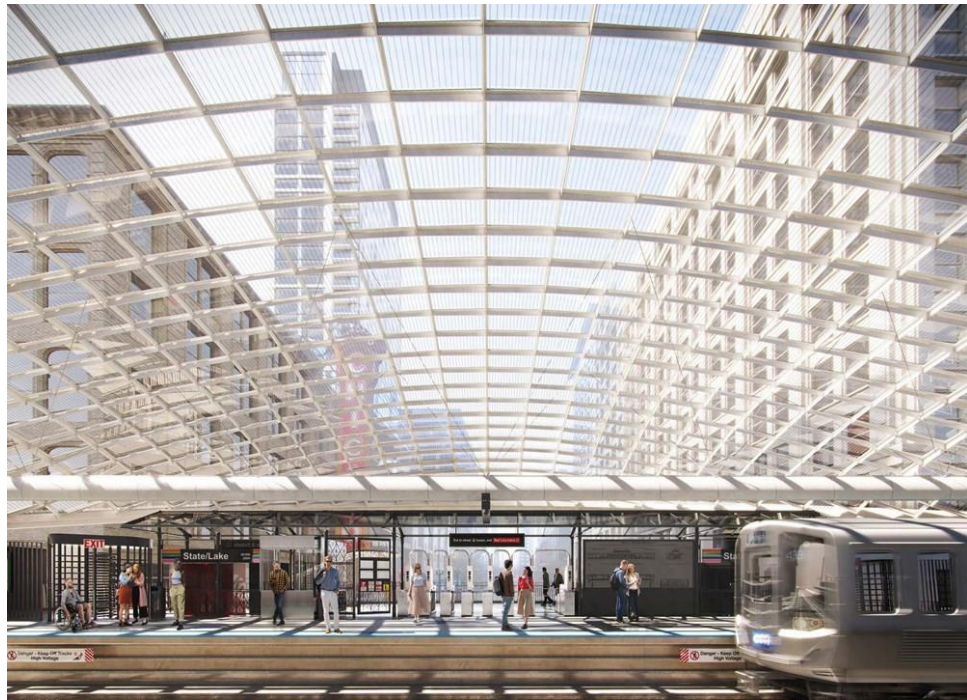
This public art opportunity is for a suite of objects to be located at specified sites on the passenger platforms and crossover.

Successful public art proposals will approach the artwork's setting with a bold and creative vision that is sensitive to its context which includes the new station architecture, the vistas up and down State Street and, importantly, the people on the platform and their relationship to the artwork in a space which many will be using daily. Designs will be informed by a robust community engagement process that interacts with project area neighborhood residents, interested members of the public from across the city, and commuters who will use the facility. Designs should include elements of an appropriate size, scale and orientation to engage viewing from multiple potential vantage points. The artwork must be engineered to withstand the demands of its environment and require minimal to no annual maintenance.

Acceptable media for the artwork are stainless steel, galvanized steel, bronze, laminated art glass panels, ceramic or other durable materials pending review and approval. Artworks must be fabricated and finished to allow routine power washing and withstand damage from general public interaction.

RENDERINGS OF THE NEW STATE/LAKE STATION





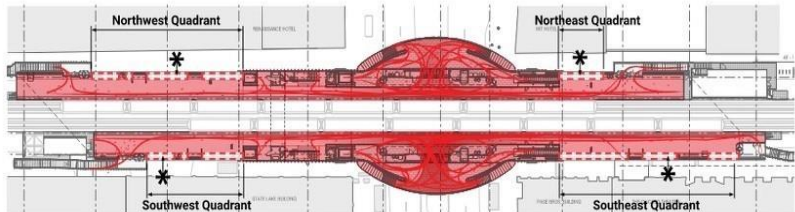
PROPOSED ART LOCATIONS

Sculpture Placement

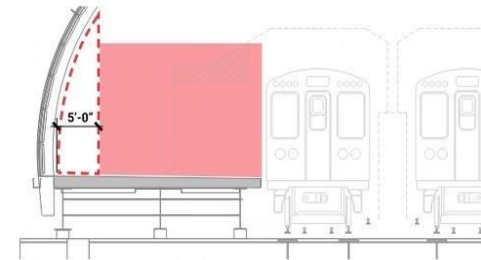
Objects are to be placed along the outer perimeter of the platform to provide a clear path of travel for all passengers.

The sculptures shall provide a minimum of 18' of clearance from the perimeter structure and rely upon the approved anchorage to the platform for its own stability.

The footprint of each sculpture should fit within a 5'-0" x 5'-0" bounding box.

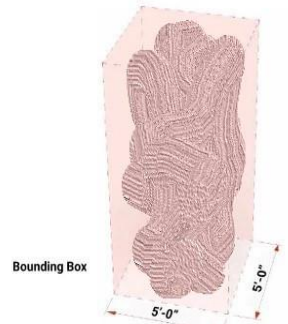


Plan Diagram



Section Diagram

- Areas of Primary Passenger Flows
- ✱ Open Areas
- ✱ Proposed Sculpture Location



Bounding Box

COMMUNITY

The State/Lake Station is located in the Chicago Loop. This dynamic neighborhood is the second largest business district in North America and also home to many museums, theatres and colleges. The residential population of the Loop has been growing consistently in recent decades and is now over 42,000 people with a high concentration of college students. The community of the station consists of both the residents of the Loop and the daily commuters from across the city and region who use the station.

SELECTION PROCESS

Following the RFQ application deadline, DCASE will convene an advisory panel of community representatives, arts professionals, and relevant agencies staff to review the applications. The committee will select 3-4 finalists, who will be commissioned to develop public art proposals. Finalists will present their design proposals to the selection panel and a final artist or artist team will be selected.

SCHEDULE*

* All dates are approximate and subject to change.

STAGE	START	END	WEEKS
RFQ open via CAFÉ online application system	1/20/23	3/5/23	7
Artist Information Session, Virtual, 6-7 PM CST (email publicart@cityofchicago.org for link)	2/1/23	2/1/23	
Review of qualifications	3/6/23	3/17/23	2
Committee selects 3-4 finalists	Week of 3/20/23		1
Notification of finalists	3/27/23		1
Finalists’ design development	4/3/23	5/28/23	8
Finalists’ midpoint review	Week of 5/1/23	5/5/23	1
Finalists’ presentations	5/29/23		1

DESIGN PROPOSAL FEE

Finalists will be paid a **\$2,500** honorarium to develop proposals.

COMMISSION BUDGET

The artwork commission will be **\$750,000**, inclusive of all costs and fees for the artist to execute the project from design through structural engineering, fabrication, site preparation, and transportation/delivery to site. Installation will be coordinated with project construction team.

ELIGIBILITY

This opportunity is open nationally to all professional artists and artist teams.

SELECTION CRITERIA

Applicants will be shortlisted based on a competitive review of the following:

- **Artistic excellence:** demonstrated skill and quality craftsmanship in examples of past work; examples provided should be relevant to how the artist will approach this public art opportunity
- **Creative process:** examples of past work should illustrate how artist has used community engagement in their design process; examples provided should be relevant to how the artist will approach this public art opportunity
- **Ability:** demonstrated experience in public art project management and executing large scale outdoor artwork, coordinating engineering and fabricating teams, delivering contractual milestones and managing large budgets in a timely fashion
- **Meaningful relationship** of the creative and conceptual aspects of their artistic process with the purpose of the CTA State and Lake Station Public Art project as expressed in the Letter of Interest (LOI).

HOW TO APPLY

Application is available via CaFÉ (www.callforentry.org) at this link:

https://artist.callforentry.org/festivals_unique_info.php?ID=10982

Interested applicants should register with CaFÉ in order to view the application. Deadline for submissions is **3/5/23, 11:59pm, CST.**

WHAT TO SUBMIT

Each artist or artist team must submit an entirely digital application.

Incomplete applications will not be considered.

Applications should include:

- a) Six (6) to ten (10) total images of past large-scale public art and infrastructure projects by the artist or the artist team's lead artist(s).
- b) Optional: One (1) video, edited to no more than two (2) minutes in length, may also be submitted but is not required.
- c) Annotated Image List: An annotated image list that includes the title, media, year completed, dimensions, location, project budget, timeline, and client or commissioning entity for each corresponding image.
 - i. The annotated image list may include thumbnails of submitted images but does not replace the need to upload individual image files in fulfillment of a) above.
 - ii. Image annotations may include very brief descriptions of how the image illustrates one or more of the selection criteria
 - iii. If a video is submitted, please include two to three (2-3) sentences to describe its context.
- d) A one (1) page Letter of Interest (LOI) stating why the State/Lake Station opportunity is meaningful and appropriate for the applicant's work, as well as potential approach to this project.
- e) If applying as an artist team, a list of key team members and their roles/affiliations in one PDF.
- f) A two (2) page resume or curriculum vitae (CV).
 - i. If applying as an artist team, provide a resume or CV for each team member combined in one PDF.
- g) Three professional references

QUESTIONS

No phone calls.

Contact: Nathan Mason, Curator of Collections and Public Art

publicart@cityofchicago.org

ARTIST INFORMATION SESSION – VIRTUAL

Time: Feb 1, 2023 06:00 PM Central Time (US and Canada)

Email for publicart@cityofchicago.org for link