



OUR WORK TODAY HONORS THE LEGACY OF

MILDRED ILES LAVIZZO

1916-1996

Mrs. Lavizzo was born in New Orleans, Louisiana. She was the wife of the late Robert Lavizzo. She received a diploma in Nursing Education from Grady Hospital at Emory University in Atlanta, Georgia.

She served as 1st Lieutenant in the United States Army Corps during World War II. After the war, she continued her education at the University of Michigan where she earned a Bachelor's Degree in Nursing. In 1947, she relocated to Chicago where she became a public health nurse for the Chicago Board of Health and earned her Master's Degree.

As the FIRST AFRICAN-AMERICAN SUPERVISOR OF TEACHER NURSES for the Chicago Board of Education, her efforts were primarily focused on the health of school-age children. Her legacy includes the initiation of the Head Start Programs in Chicago Public Schools.

**THANK YOU
LAVIZZO ELEMENTARY
AND PRINCIPAL
TRACEY STELLY**



ROSELAND COMMUNITY MEDICAL DISTRICT MASTER PLAN

COMMUNITY VISION DISCUSSION | NOV 2021



ADRIAN SMITH+GORDON GILL
ARCHITECTURE



CHICAGO
NEIGHBORHOOD
INITIATIVES



FARSOUTH
COMMUNITY DEVELOPMENT CORPORATION



Johnson & Lee, Ltd

AGENDA

10:00-10:30 Check-In; Food and Beverage

10:30-11:25 SESSION ONE: LARGE GROUP DISCUSSION

11:25-11:30 Move to Breakout Rooms

11:30-12:15 SESSION TWO: SMALL GROUP DISCUSSION

12:15-12:20 Move back to Gymnasium

12:20-1:00 SESSION THREE: REPORT-OUT AND NEXT STEPS

1:00-2:00 Open House Discussion

TODAY'S DISCUSSION THEME

WHAT IS THE COMMUNITY VISION FOR THE MEDICAL DISTRICT?





RICHARD



ABRAHAM



KATANYA



ANDREA



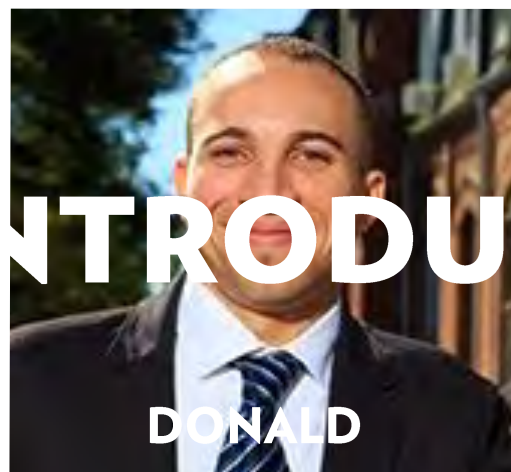
MAURICE



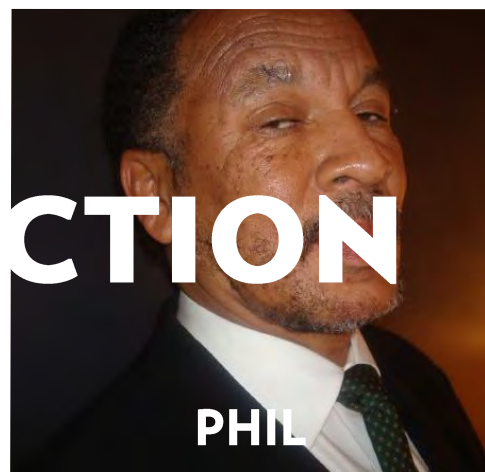
DAVE



KIMBERLY



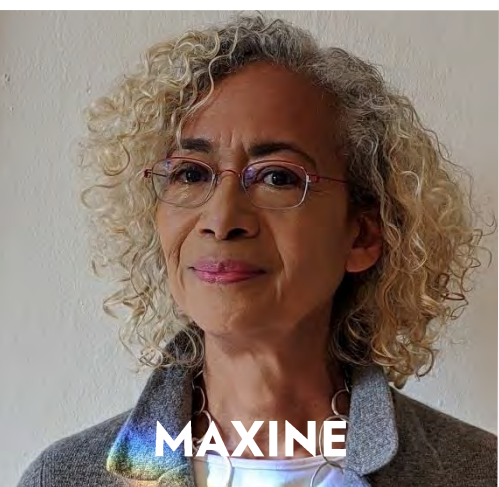
DONALD



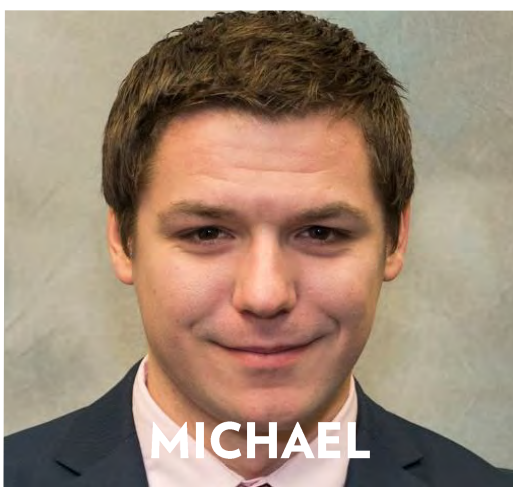
PHIL



GORDON



MAXINE



MICHAEL



LUIS



ERIKA



VINCENT

TEAM INTRODUCTION

TEAM INTRODUCTION

ADRIAN SMITH + GORDON GILL ARCHITECTURE

MASTER PLANNING | ARCHITECTURE | SUSTAINABILITY | PROJECT MANAGEMENT

- RICHARD WILSON, GORDON GILL, LUIS PALACIO, VINCENT ZHENG

FAR SOUTH CDC

NEW ROSELAND COMMUNITY HOSPITAL & MEDICAL DISTRICT ENGAGEMENT | BUSINESS & WORKFORCE DEVELOPMENT

- ABRAHAM LACY, KATANYA RABY

GREATER ROSELAND CHAMBER OF COMMERCE

NEIGHBORHOOD & COMMUNITY ENGAGEMENT | BUSINESS & WORKFORCE DEVELOPMENT

- ANDREA REED

CHICAGO NEIGHBORHOOD INITIATIVES

ECONOMIC DEVELOPMENT & IMPLEMENTATION STRATEGIST

- DAVE DOIG, DONALD HIGGINS, JOSHUA WATSON, KIMBERLY MORRIS

APPLIED REAL ESTATE ANALYSIS

REAL ESTATE MARKET POSITIONING

- MAXINE MITCHELL & ROBERT MILLER

JOHNSON & LEE

ARCHITECTURAL PLANNING & DESIGN GUIDELINES

- PHIL JOHNSON, IOANNIS DAVIS, NATALIE ZEPEDA



NEW YORK



CHICAGO



CHICAGO



DUBAI

Adrian Smith at SOM



WUHAN



JEDDAH

COMMUNITY VISION DISCUSSION
NOV 2021



CHICAGO



SHENZHEN



MASTER PLANS

9

RIVERWALK



EXPO 2017



EXPO 2020



MILLENNIUM PARK



CHENGDU

ROSELAND COMMUNITY MEDICAL DISTRICT
MASTER PLAN



RIYADH



ISTANBUL

COMMUNITY VISION DISCUSSION
NOV 2021



WASHINGTON PARK



NORTH LAWNDALE



PULLMAN



NEIGHBORHOOD PLANS

10

RIVERDALE



HUMBOLDT PARK



BLUES DISTRICT



LITTLE VILLAGE



LAKE CALUMET



BRONZEVILLE

ROSELAND COMMUNITY MEDICAL DISTRICT
MASTER PLAN



LAKEVIEW WRIGLEYVILLE



MILWAUKEE CORRIDOR



GARFIELD PARK

COMMUNITY VISION DISCUSSION
NOV 2021



More than half of the projects in Positioning Pullman have been completed or are underway.

More than **\$56 million** of public and private funding has been invested within Pullman National Monument.

This community-driven plan has been recognized with **eight national, regional and local awards** for excellence.

PULLMAN NATIONAL MONUMENT

America's Stories Live Here

PULLMAN FACTORY ¹²

DECADES OF DECAY AND DIVISION

PULLMAN VISITOR CENTER ¹³

PARK AND MEETING SPACE FOR THE COMMUNITY



PULLMAN VISITOR CENTER ¹⁴

PARK AND MEETING SPACE FOR THE COMMUNITY



WORKER'S GATE 15

RESTORING PEDESTRIAN ACCESS TO THE FACTORY GROUNDS



WORKER'S GATE 16

RESTORING PEDESTRIAN ACCESS TO THE FACTORY GROUNDS



TRANSFER PIT 17

TEACHING VISITORS ABOUT FACTORY OPERATIONS





TRANSFER PIT 18

TEACHING VISITORS ABOUT FACTORY OPERATIONS

RIVERDALE | LITTLE CALUMET VISION



BEAUBIEN WOODS & LITTLE CALUMET RIVER COLLABORATIVE IDEAS WORKSHOP RECOMMENDATIONS





FREEDOM SEEKERS GARDEN



LITTLE CALUMET MARITIME ARTS



LITTLE CALUMET CLEARING

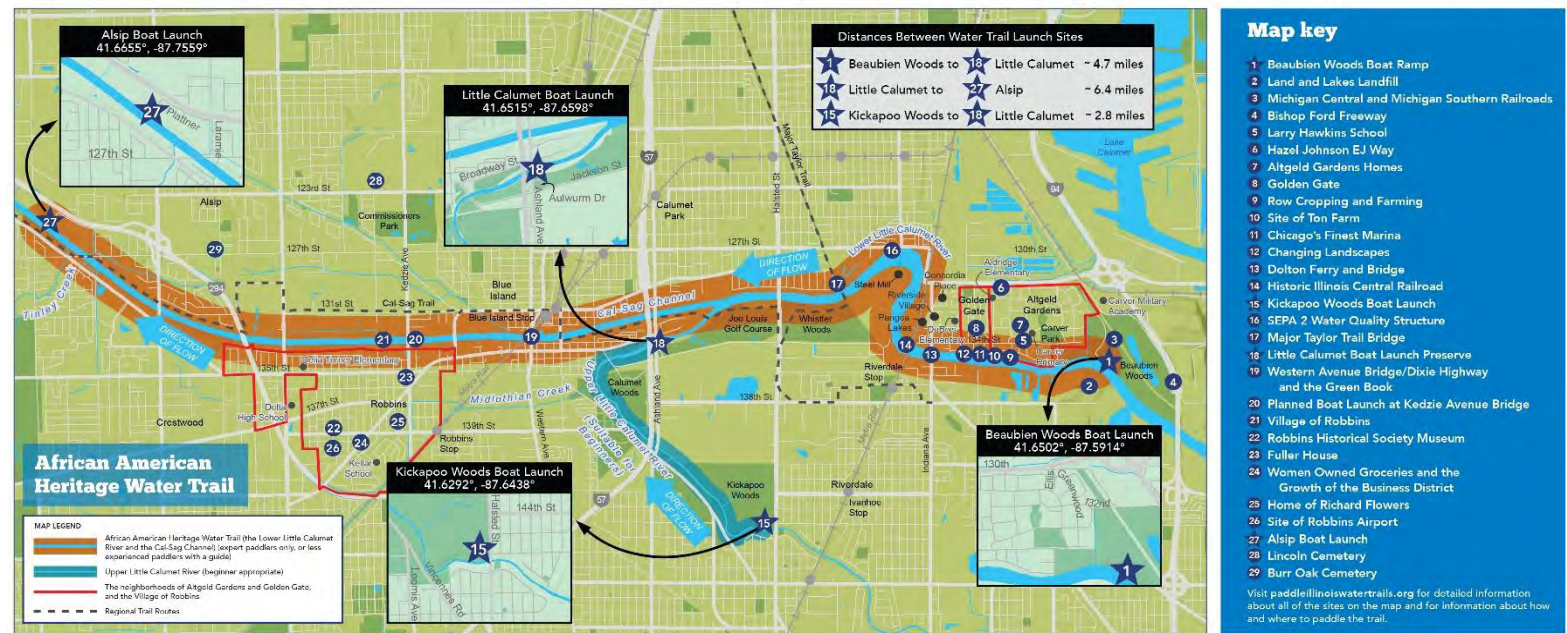
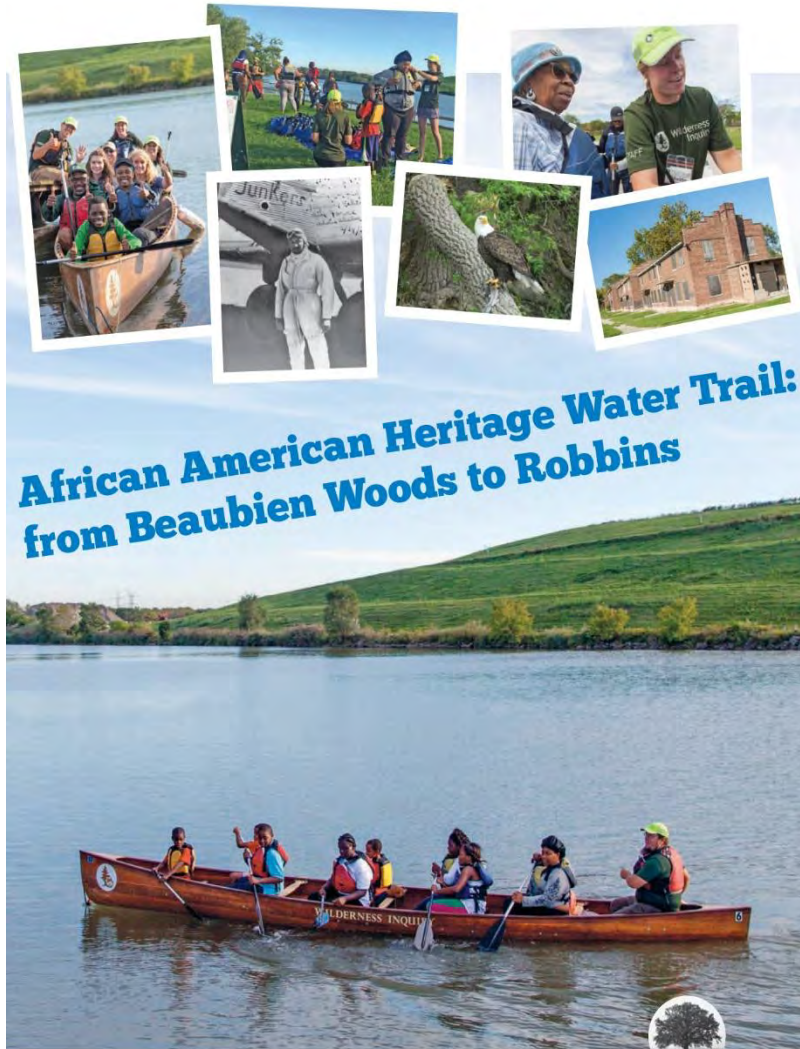


ACME BEND

AFRICAN AMERICAN HERITAGE WATER TRAIL

FROM BEAUBIEN WOODS TO ROBBINS

21



SOUTHWEST PARTNERSHIP BALTIMORE

MEDICAL DISTRICT BIOPARK

OVERVIEW

Through the interview process with the working groups, the Urban Design team discovered key projects and areas of interest. Five focal areas emerged that specifically address physical design outcomes.

Additional focal areas (such as education, workforce, and housing) provide strategies and recommendations that apply across the seven neighborhoods.



W. BALTIMORE STREET

A major commercial corridor, W. Baltimore St. presents an incredible opportunity for economic development, new businesses and jobs.

HOLLINS MARKET DISTRICT

A neighborhood gem, Hollins Market is poised to be a destination amenity at the heart of the Southwest neighborhoods.

B&O HERITAGE CORRIDOR

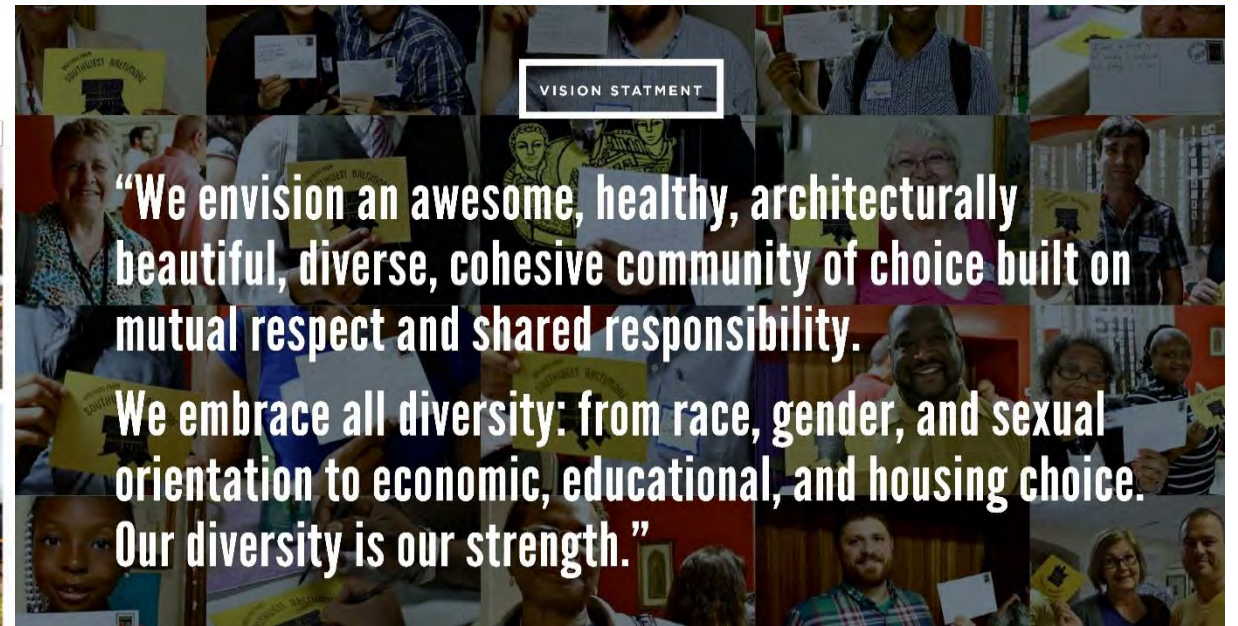
The B&O is the historic backbone of the neighborhoods. Bridging between Carroll Park, ingtown and downtown Baltimore, it is a regional destination that helps grow Southwest.

GROWING THE SQUARES

West Baltimore is home to attractive public squares, defining public spaces that foster a special identity and amenity for surrounding residential communities.

STREETS & PUBLIC SPACES

An overlay across all of the Southwest Neighborhoods, Streets and Public Space looks at major connectors and how they can bring the neighborhoods together.



Roseland Medical District Existing Conditions Report & Market Analysis

November 2019



Acknowledgements

Special thanks to:

Far South Community Development Corporation
Roseland Medical District Commission
Roseland Community Hospital

Additional thanks to:

9th Ward Alderman Anthony Beale
34th Ward Alderman Carrie Austin
Congresswoman Robin Kelly
Senator Emil Jones Jr III
Representative Justin Slaughter
Benefit Chicago
Calumet Area Industrial Commission
City of Chicago
Chicago Department of Planning and Development
Chicago Family Health Center
Chicago Neighborhood Initiatives
Chicago Transportation Authority
DL3 Realty
Endeavor Institute
Genesis Housing Development Corporation
Habitat for Humanity
Illinois Housing Development Authority
Illinois Medical District
JGMA Architects
Neighborhood Housing Services (NHS) of Chicago
PACE Pulse
Perkins+Will
Phalanx Family Services
Special Service Area #45
Special Service Area #71

Funding Acknowledgment

This project was supported through the Chicago Metropolitan Agency for Planning's (CMAP) Local Technical Assistance (LTA) program, which is funded by the Federal Highway Administration (FHWA), Federal Transit Administration (FTA), U.S. Department of Housing and Urban Development (HUD), Illinois Department of Transportation (IDOT), and the Chicago Community Trust. The Metropolitan Mayors Caucus (MMC) and CMAP would like to thank these funders for their support for this project.

Unless otherwise specified, all photos are by CMAP staff.



23



Table of Contents

Section 1: Introduction	5	Primary market area - 5- minute drive time	36
The planning process	5	Secondary market area - 10-minute drive time	37
Location	6	Economic development incentives	38
Far South Community Development Corporation (CDC)	6	Tax Increment Financing	38
History of Roseland	6	Neighborhood Opportunity Fund	38
Section 2: Existing conditions	8	Opportunity Zones	38
Community context	9	Section 4: Community engagement	40
Community wellness	14	Stakeholder interviews	41
Housing	16	Key challenges	42
Mobility	22	Visions for the future	43
Section 3: Economic development	30	Section 5: Recommendations	44
Employment trends	32	Health District Planning Framework	46
Commercial development	34	Population health	46
Shopping center locations	35	Place	46
Recent development	35	Partnerships	47
Retail gap analysis	36	Performance	48



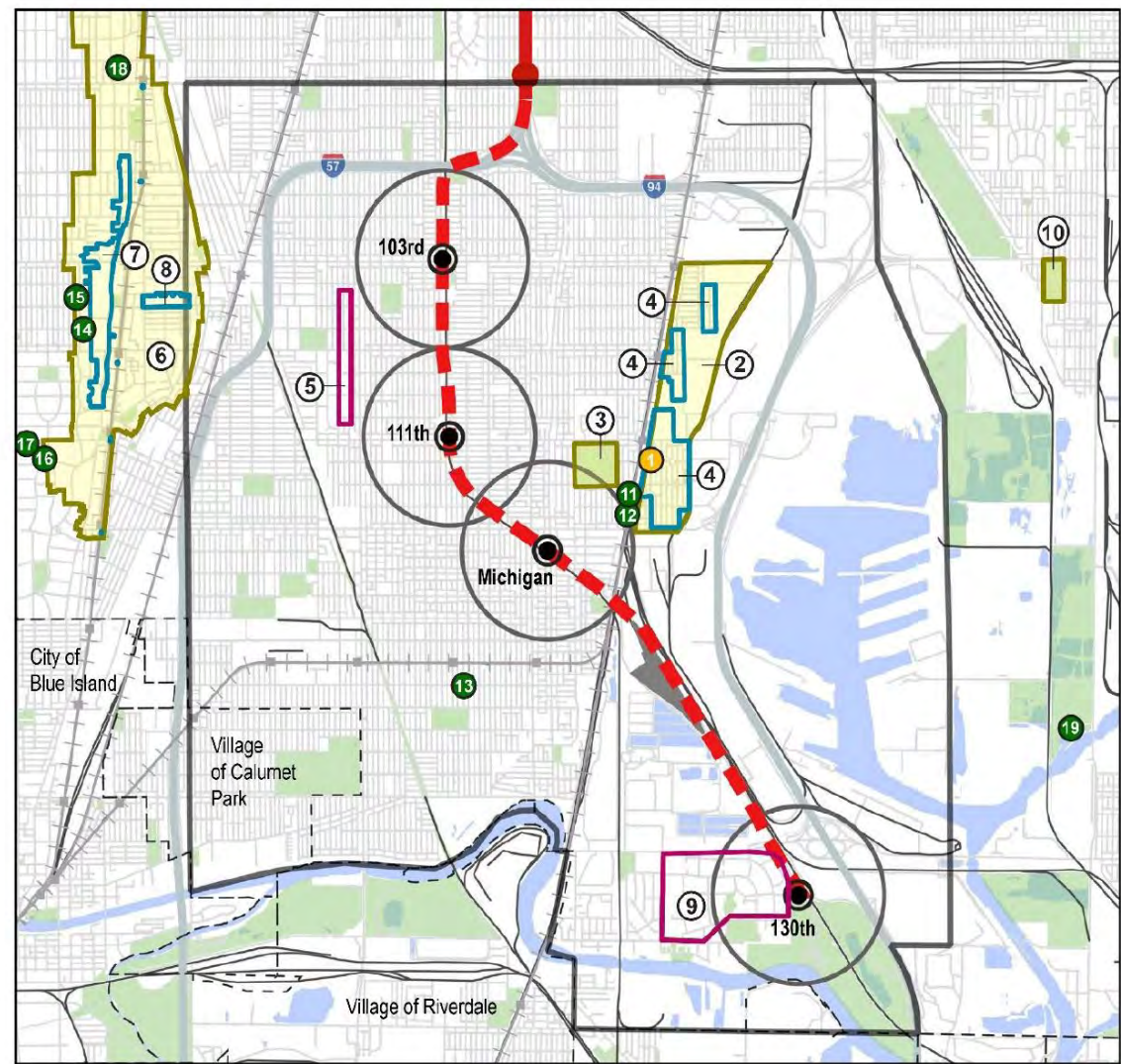
NORTH KOSTNER HEALTH CENTER

JOHNSON & LEE ARCHITECTS



RED LINE EXTENSION MARKET ANALYSIS

AREA – APPLIED REAL ESTATE ANALYSES



ILLINOIS MEDICAL DISTRICT

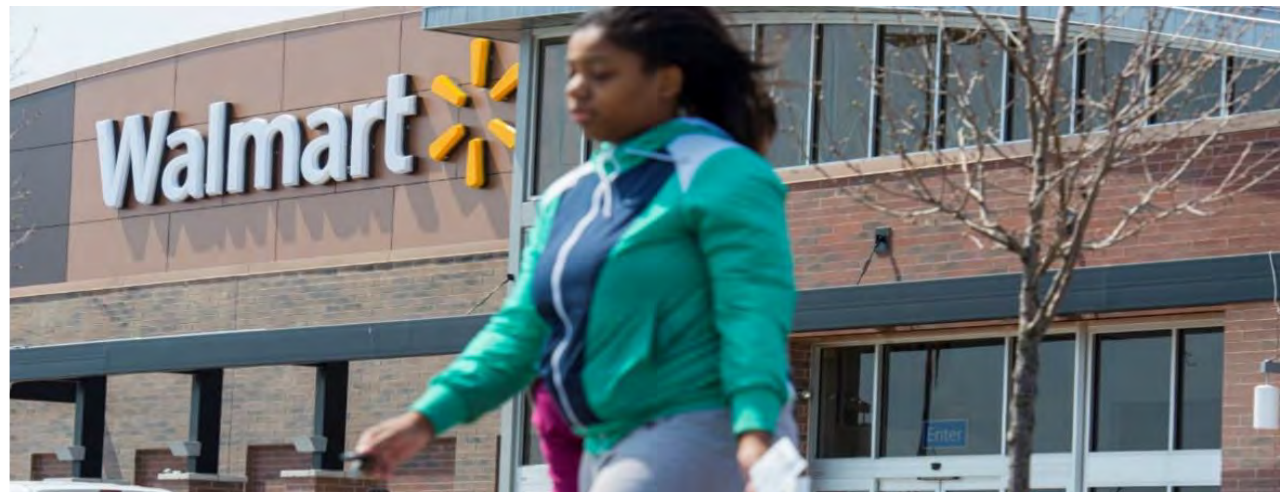
AREA – APPLIED REAL ESTATE ANALYSES



CHICAGO NEIGHBORHOOD INITIATIVES

PULLMAN PARK & ARTSPACE LOFTS

27



CHICAGO NEIGHBORHOOD INITIATIVES

BRONZEVILLE LAKEFRONT & ARC INNOVATION CENTER

28



WORKPLAN & SCHEDULE

2021

OCTOBER: MEDICAL INDUSTRY FOCUS GROUPS; COMMISSION ENGAGEMENT

NOVEMBER: PUBLIC WORKSHOP ONE (NOV 6); COMMUNITY VISION DISCUSSION

DECEMBER: PUBLIC WORKSHOP TWO (DEC 11); DESIGN WORKSHOP; GOALS-ORIENTED EVALUATION; COMMISSION ENGAGEMENT

2022

JANUARY: DRAFT PLAN; DRAFT GUIDELINES; DRAFT IMPLEMENTATION STRATEGY; COMMISSION ENGAGEMENT

FEBRUARY: PUBLIC MEETING THREE (FEB 8); FINAL PLAN; FINAL GUIDELINES; FINAL IMPLEMENTATION STRATEGY

MARCH: ADOPT PLAN

WORKING TOGETHER

RESIDENTS • ELECTED OFFICIALS • MEDICAL DISTRICT COMMISSION
QUALITY-OF-LIFE PLAN • RED LINE EXTENSION
INVEST SOUTH/WEST • PULLMAN NATIONAL MONUMENT
ROSELAND HOSPITAL • MEDICAL INDUSTRY LEADERS

MEETINGS, INTERVIEWS, FOCUS GROUPS

- **MEDICAL DISTRICT COMMISSION**
- **ROSELAND HOSPITAL**
- **LISC QUALITY OF LIFE STEERING COMMITTEE**
- **INVEST SOUTH/WEST**
- **ALDERMAN BEALE**
- **ALDERMAN AUSTIN OUTREACH**
- **REPRESENTATIVE SLAUGHTER**
- **LAWNDALE CHRISTIAN**
- **RED LINE PLANNING TEAM**
- **CHICAGO TRANSIT AUTHORITY**
- **CHICAGO DEPARTMENT OF PLANNING & DEVELOPMENT**
- **DEVELOPMENT EXPERTS**
- **NATIONAL PARK SERVICE**
- **HISTORIC PULLMAN FOUNDATION**

FEEDBACK

- **PRIORITIZE COMMUNITY NEEDS**
- **ENVISION NEW NATIONAL MODEL**
- **FOCUS ON PREVENTIVE CARE**
- **CREATE CULTURE OF HEALTHY LIFESTYLE, EATING & EXERCISE**
- **MAKE NEIGHBORHOOD SAFE SO PEOPLE CAN GO OUTSIDE**
- **ECONOMIC DEVELOPMENT AND JOB CREATION**
- **INVEST IN PEOPLE ALREADY IN THE NEIGHBORHOOD**
- **ATTRACT NEW RESIDENTS**
- **MEDICAL DISTRICT MUST DELIVER TRANSFORMATIVE CHANGE**
- **ADDRESS SYSTEMIC RACISM**
- **ALIGN FEDERAL, STATE & LOCAL RESOURCES**
- **DELIVER THE RED LINE**
- **RESTORE & ENERGIZE MICHIGAN AVENUE**
- **LEVERAGE PULLMAN NATIONAL MONUMENT VISITATION**
- **CONNECT TO LOCAL RIVERS, LAKES, PARKS & PRESERVES**
- **GROW TALENT PIPELINE**

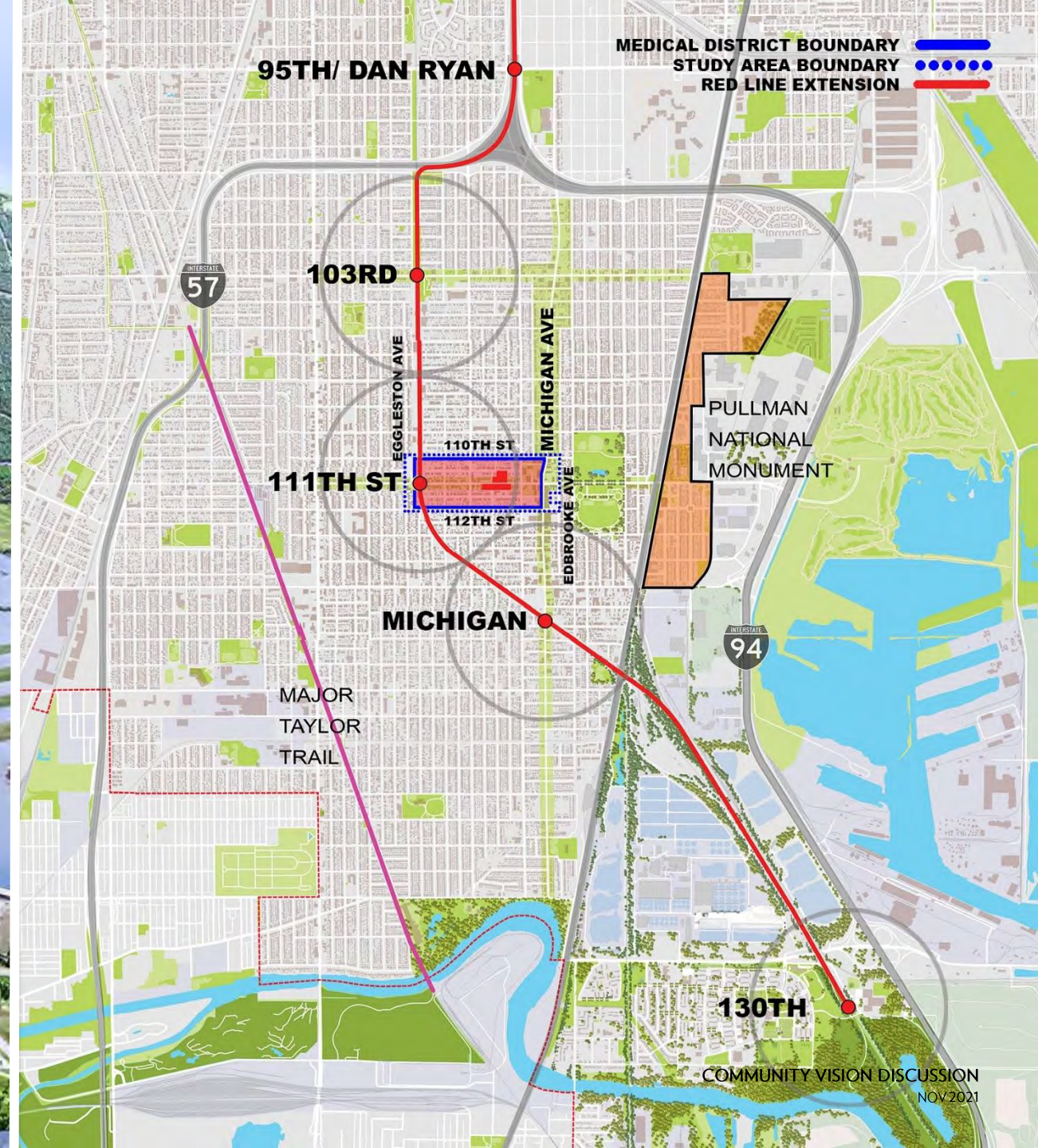
L T M A

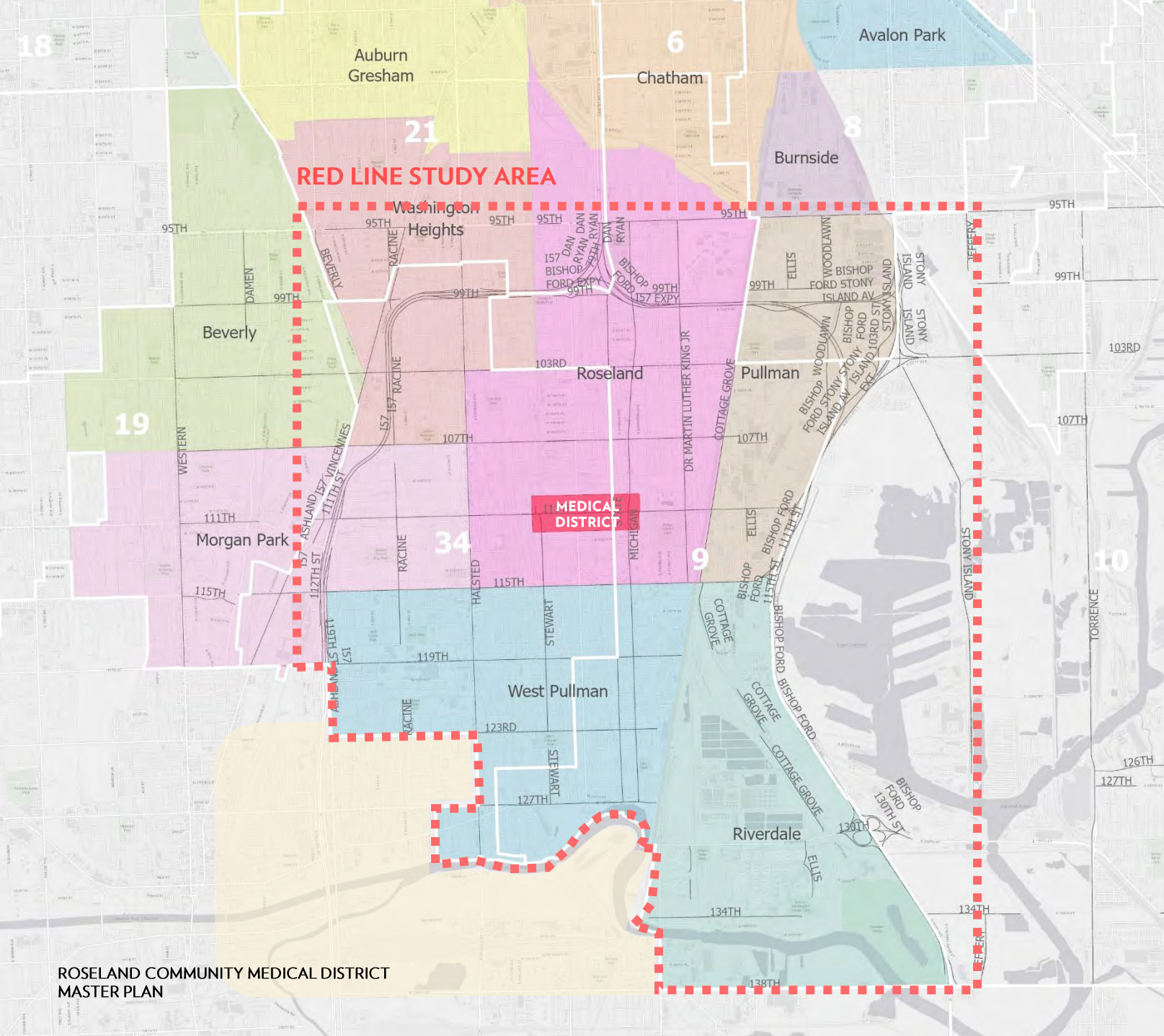
LESS TALK – MORE ACTION

PHYSICAL EXAM

MEDICAL DISTRICT CONDITIONS

DISTRICT LOCATION & BOUNDARIES





SERVICE AREA

ROSELAND MEDICAL DISTRICT

300,000 PEOPLE
12 COMMUNITY AREAS
6 ZIP CODES

- Twelve community areas depicted in colors.
- Ward boundaries depicted in white.
- Red Line study area depicted in red dashed lines that encompass 20 square miles.
- Medical District is located at the center of the Hospital and Red Line service areas.
- Master Plan will address the regional scale broadly and the Medical District in detail.

ILLINOIS MEDICAL DISTRICTS

MID-ILLINOIS MEDICAL DISTRICT

Springfield

2003 Established
13,500 Employees
400,000 Residents
4.7 M Square Feet
Two Hospitals
Medical University
Clinics

640
Acres

ILLINOIS MEDICAL DISTRICT

Chicago

1941 Established
29,000 Employees
80,000 People Per Day
\$220 M Research/Yr
\$3.4 B Economic Activity/Yr
Four Health Systems, 40 Health Care
Facilities, Labs, Universities, Incubator

560
Acres

ROSELAND MEDICAL DISTRICT

Chicago

2011 Established
95 Acres
490 Employees
300,000 Residents
Roseland Hospital,
Clinics

95
Acres

*“Housing, restaurants and retail are important to recruiting talent and attracting investors to a bustling innovation district.”
- Kate Schellinger, Interim Executive Director, Illinois Medical District, October 2021*

ROSELAND MEDICAL DISTRICT AUTHORITY

Roseland Medical District

Established in 2011 by the State of Illinois to attract and retain:



- Viable Health Care Facilities
- Medical Research Facilities
- Academic Centers of Excellence
- Emerging High-Tech Enterprises
- Supportive Facilities and Uses

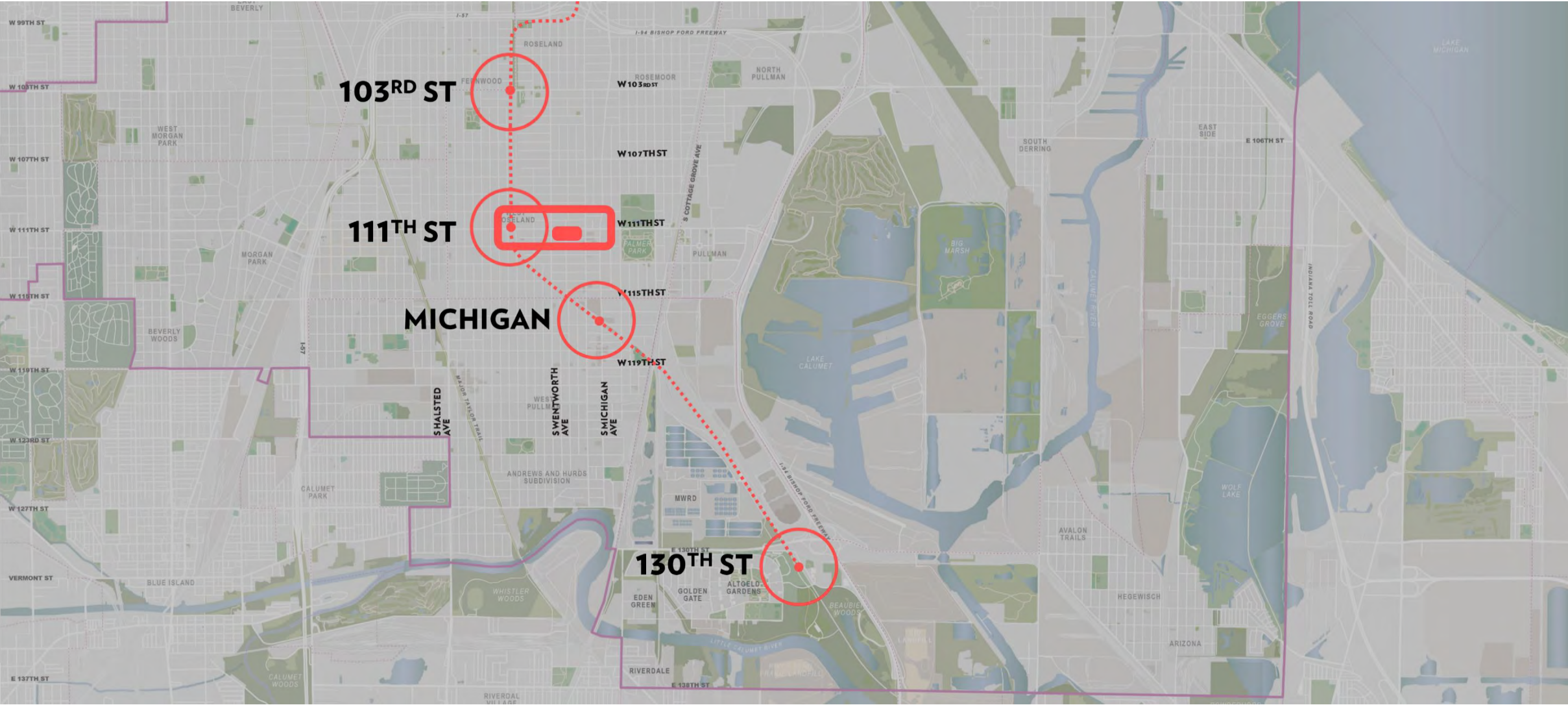
Roseland Medical District Commission

Established to create, maintain and expand health care facilities and services by:

- Acquiring, Selling and Leasing Property
- Constructing Facilities
- Holding and Managing Contracts
- Applying for Loans, Grants and Appropriations
- Collecting Assessments and Fees
- Making Grants to Neighborhood Organizations

REGIONAL CONTEXT

-  Medical District Boundary
-  Roseland Hospital
-  Future Red Line



LOCAL CONTEXT

Medical District Boundary

Roseland Hospital

Future Red Line

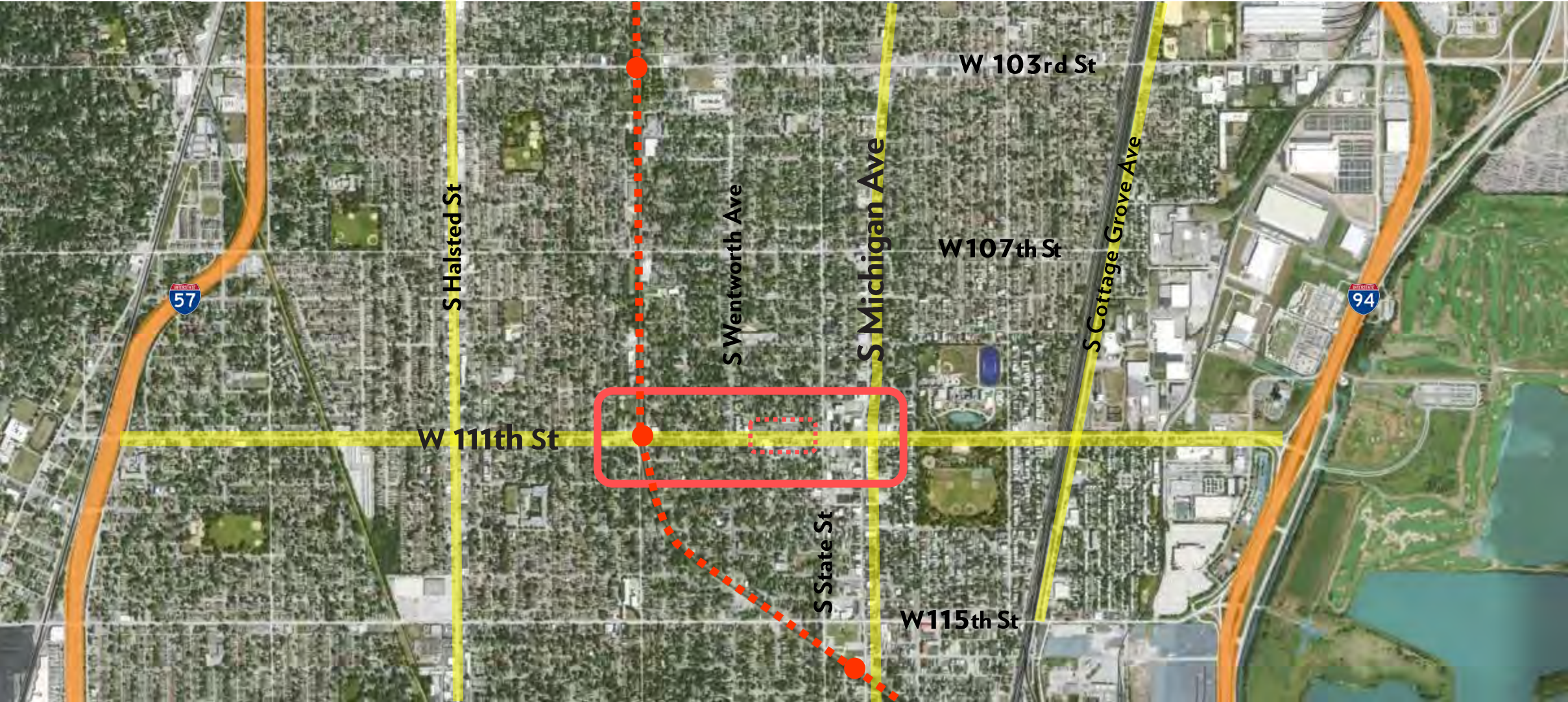
N

0

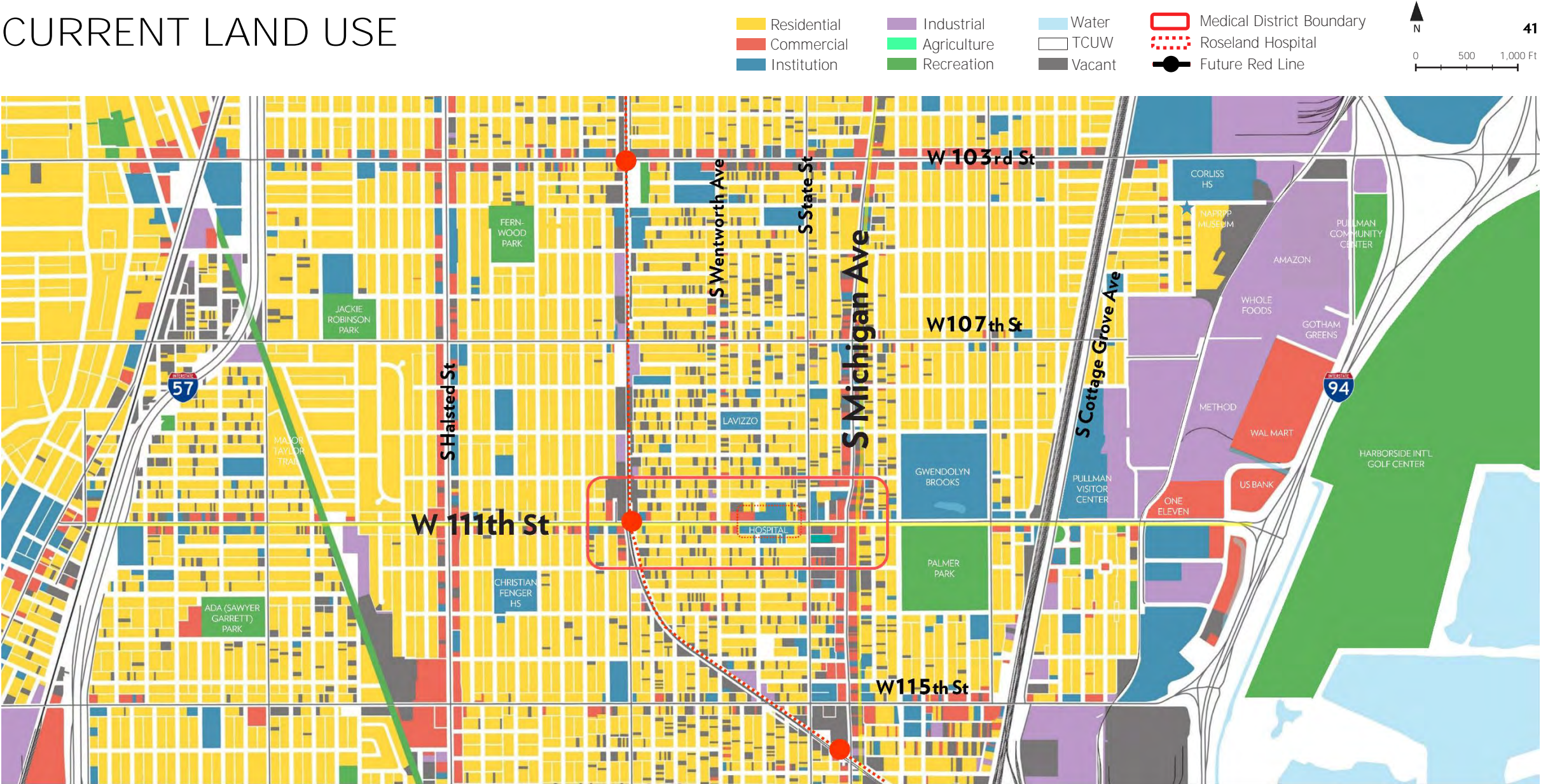
500

1,000 Ft

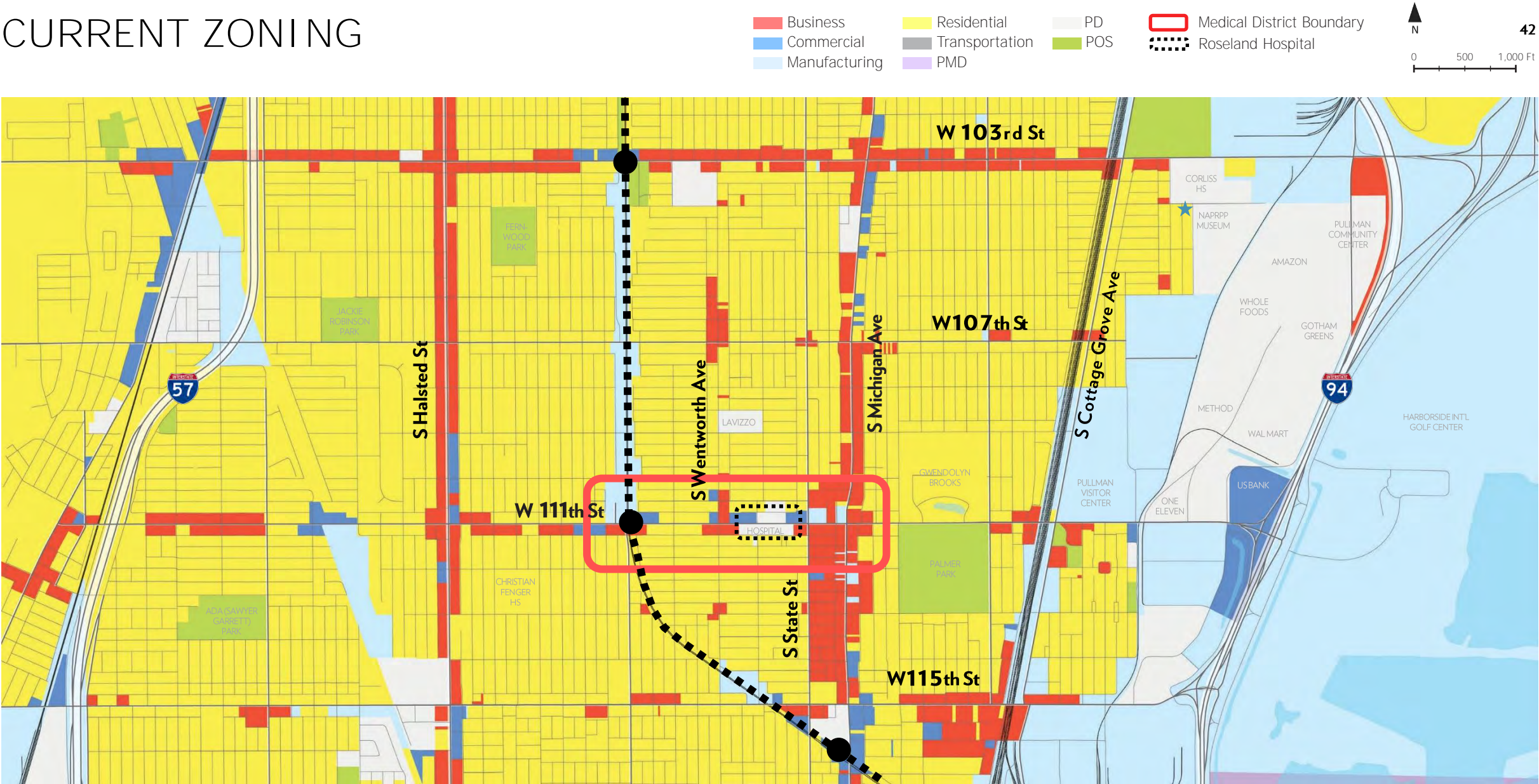
40



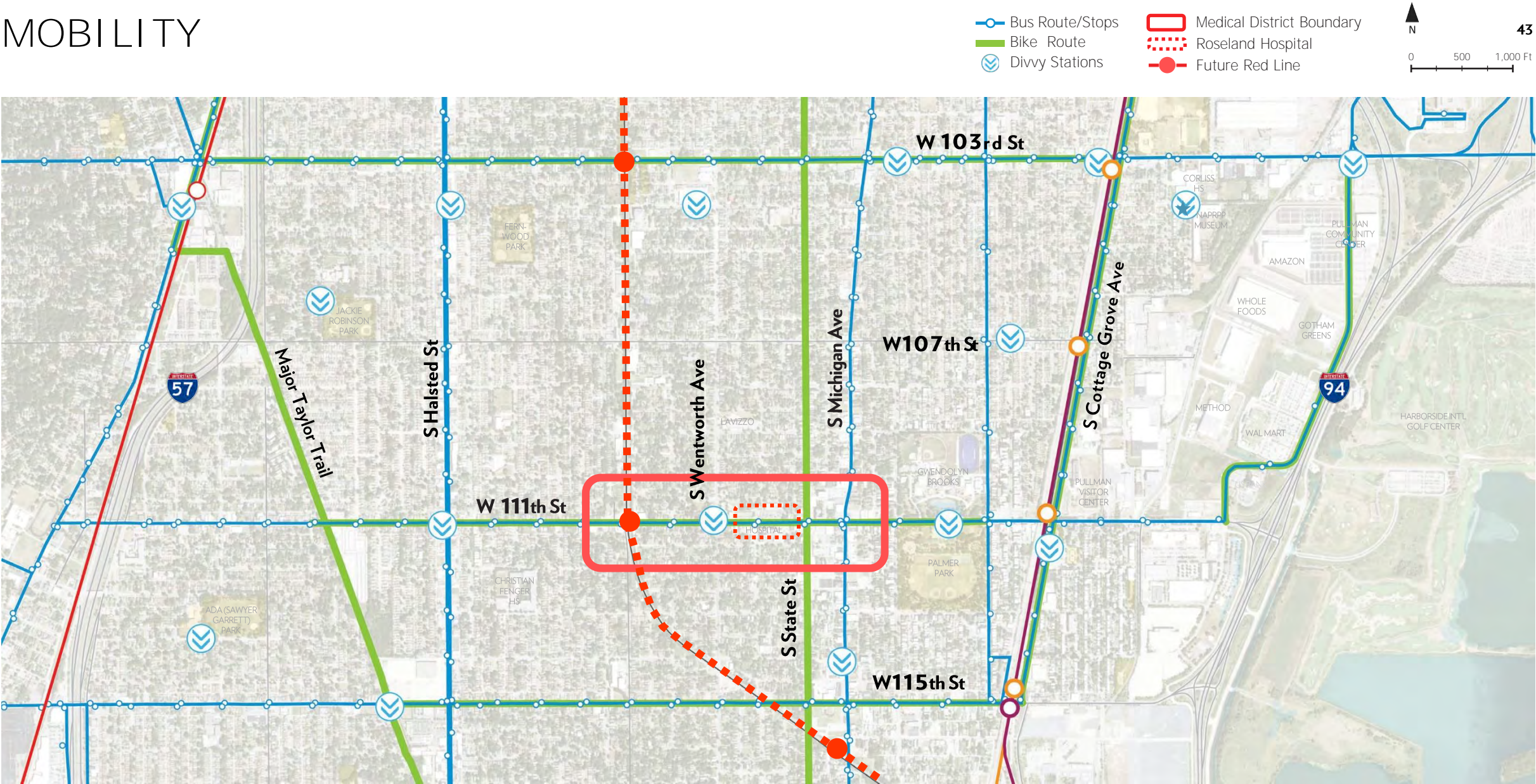
CURRENT LAND USE



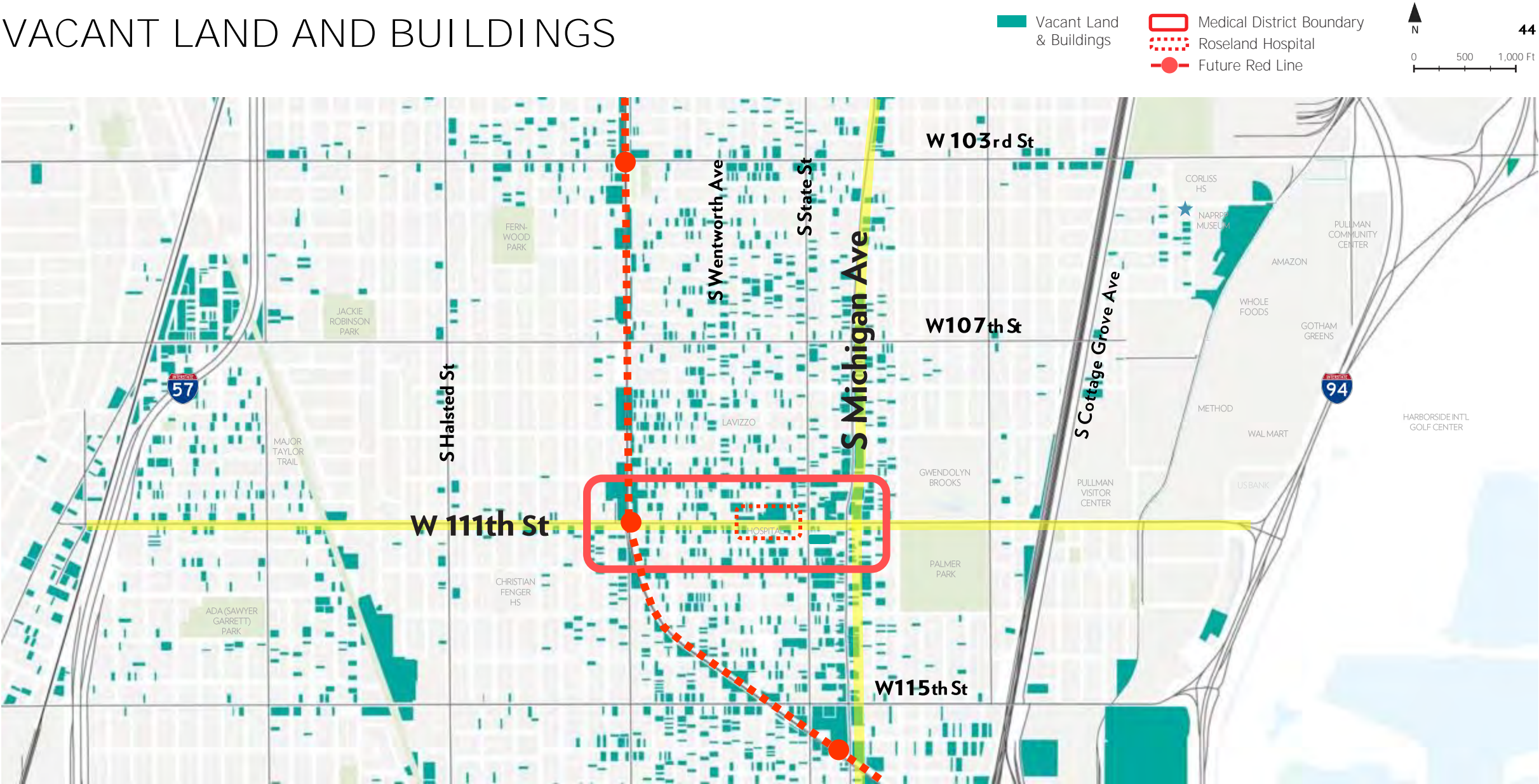
CURRENT ZONING



MOBILITY



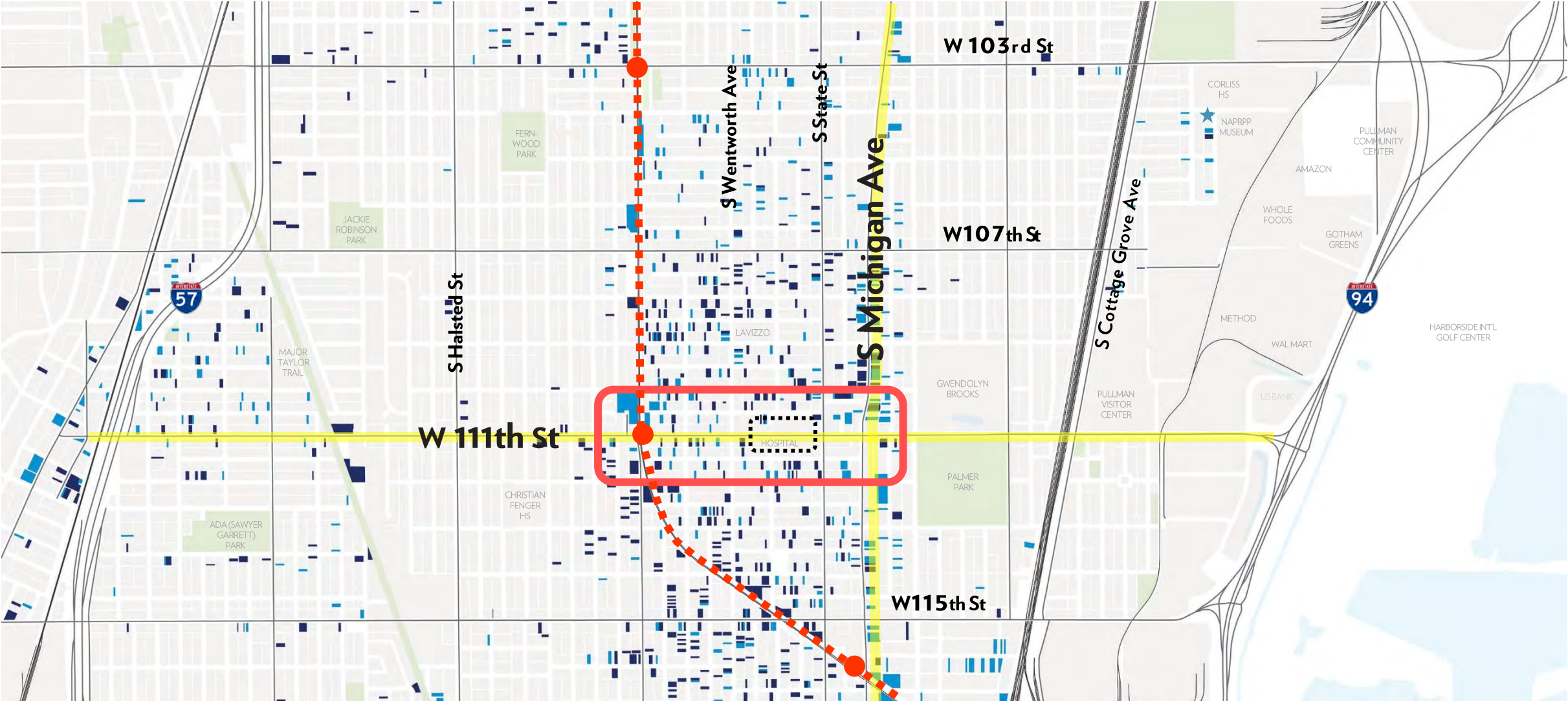
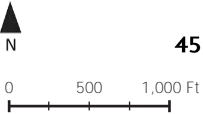
VACANT LAND AND BUILDINGS



CITY/COUNTY-OWNED VACANT LAND

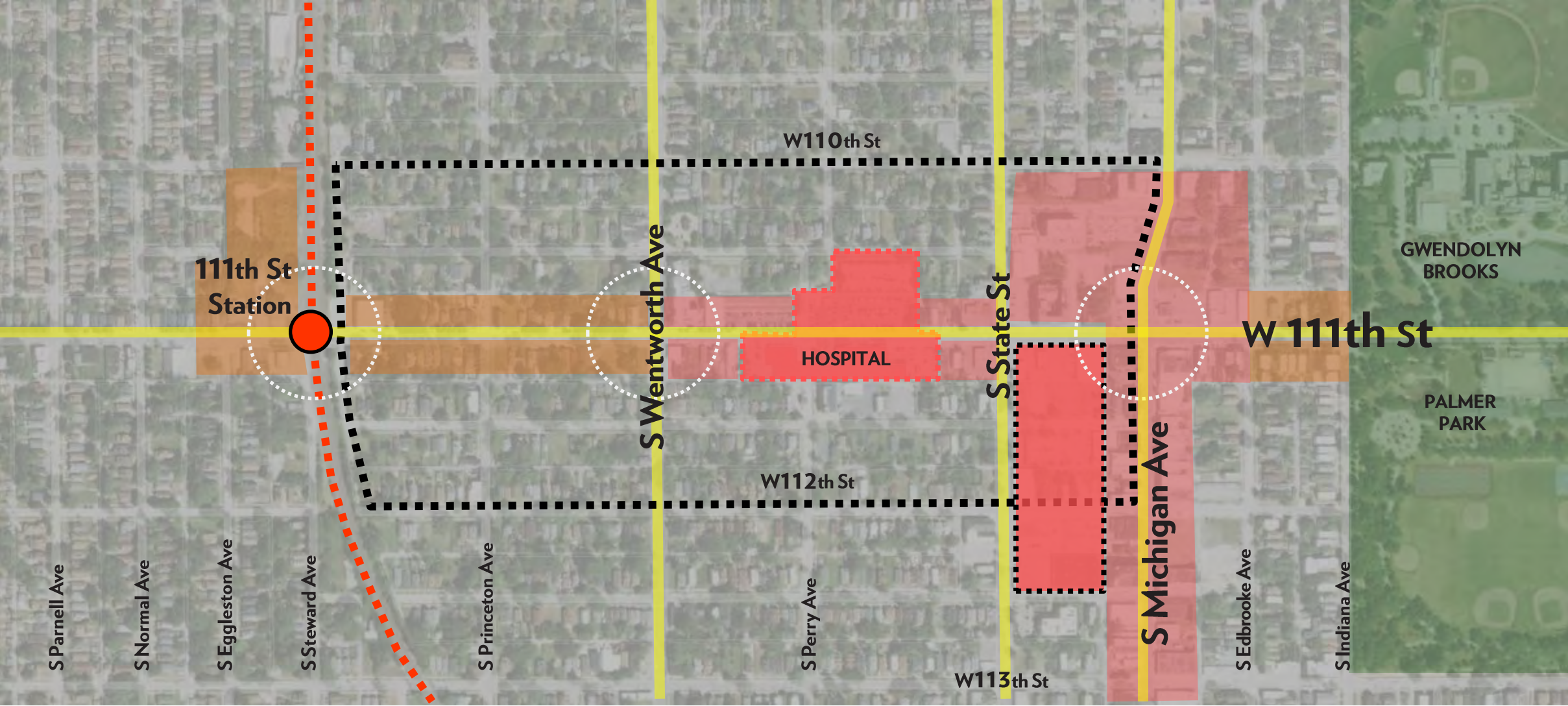
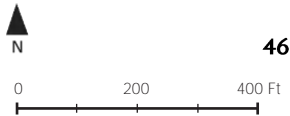
City Owned Land
Cook County Land Bank

Medical District Boundary
Roseland Hospital



MEDICAL DISTRICT

- Medical Concentration Sites
- Commercial Mixed-Use Revitalization
- Residential Mixed-Use Revitalization
- Medical District Boundary
- Roseland Hospital
- Future Red Line



HEALTH CARE DYNAMICS

HEALTH CARE TRENDS

The Health Care Industry is undergoing major shifts in the approach to patient care and financial models.....

- **FINANCIAL MODELS FOCUS ON TRYING TO KEEP PEOPLE OUT OF HOSPITALS**
- **FOCUS ON REDUCING NUMBER OF HOSPITAL BEDS**
- **OUTPATIENT FACILITIES ARE GENERATING A GREATER PORTION OF REVENUE**
- **CARE IS TRANSITIONING TO CHEAPER AND MORE CONVENIENT SETTINGS**
- **FLEXIBILITY NEEDED FOR CONSTANTLY CHANGING CARE DELIVERY MODELS**
- **SMALLER HOSPITALS ARE SCALING DOWN AND STRIPPING SERVICES**
- **LARGER SYSTEMS ARE STRATEGICALLY INCREASING OUTPATIENT FACILITIES**
- **IMPERATIVE TO ADDRESS SOCIETAL DETERMINANTS OF POOR HEALTH**

BENCHMARKS & SCALE COMPARISONS

THE NEW ROSELAND COMMUNITY HOSPITAL

50

Roseland Community Hospital has provided comprehensive healthcare services to residents of Chicago's far South Side neighborhoods since 1924.

2024 will mark its 100-year anniversary.

GFA: 140,000 SF

Land Area: 4 Acres

Number Beds: 134

Beds per Acre: 33



ROSELAND HOSPITAL



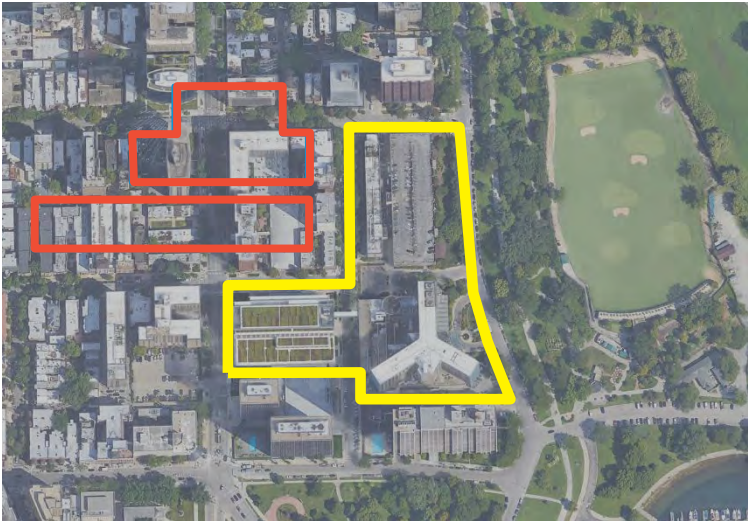
HOSPITAL SCALE COMPARISONS

Benchmark Hospital Outline 

Roseland Hospital Site Outline 

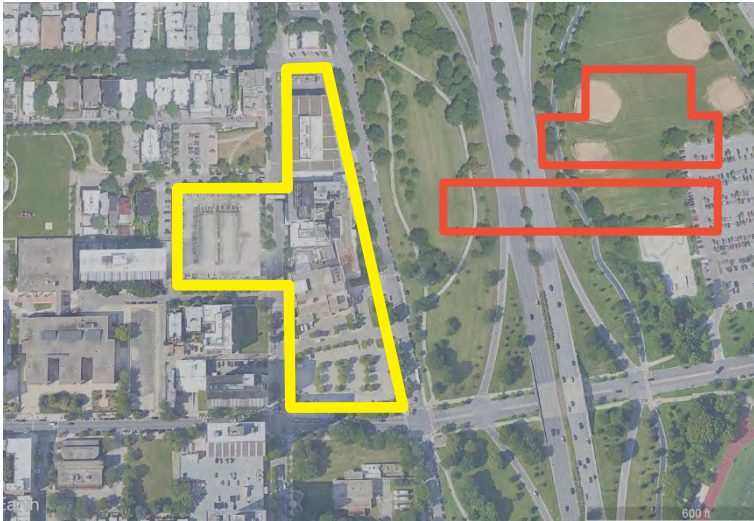
Amita Health Saint Joseph Hospital

Land Area: 7 Acres
Number Beds: 327
Beds per Acre: 46



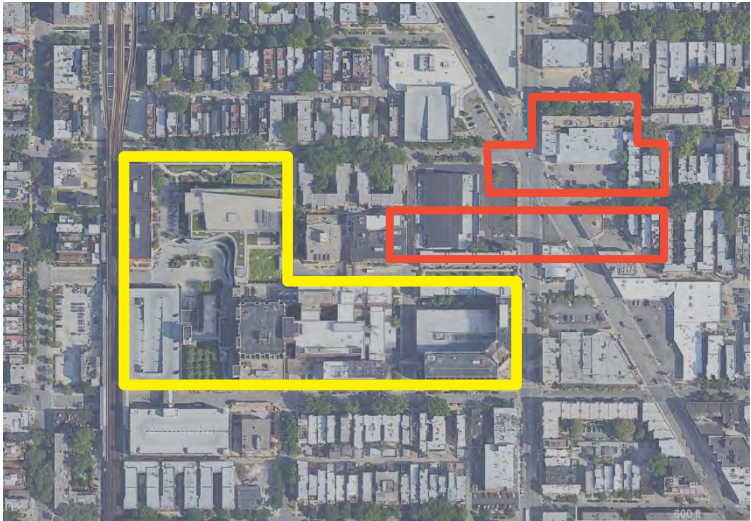
Weiss Memorial Hospital

Land Area: 7 Acres
Number Beds: 236
Beds per Acre: 33



Advocate Masonic Hospital

Land Area: 11 Acres
Number Beds: 551
Beds per Acre: 50



SWEDISH HOSPITAL

Swedish Hospital has been serving Chicago’s diverse north and northwest sides for 133 years, providing the full range of comprehensive health and wellness services including an acute care hospital, primary care and specialists in the medical group, strong community outreach programs and Chicago’s only certified medical fitness center, Galter LifeCenter.

Swedish Hospital offers more than 50 academic-level medical specialties and represents our many established and distinctive organization including:

- Swedish Medical Group
- Physician group of more than 150 board-certified employed physicians and advanced practice providers
- Galter LifeCenter
- Certified medical fitness center
- Swedish Hospital Foundation
- Fundraising arm that supports many key programs that benefit our community.
- Swedish Physician Partners
- Clinically integrated managed care organization

HEALTH SERVICES:

Back Health	Internal Medicine	Pulmonary Services
Cancer Care	Laboratory and Pathology	Radiology Services
Cardiac Heart Services	Mental Health Services	Rehabilitation Therapy
Childbirth	Midwifery	Sleep Disorders
Dental Diabetes	Nutrition Counseling	Sports Medicine
Dermatology	Neurosurgery	Stroke Services
Ears, Nose and Throat	Obstetrics and Gynecology	Surgical Services
Emergency Services	Orthopedic Services	Urogynecology
Eye Care	Pain Management	Varicose Veins
Family Medicine	Pediatric Services	Vascular Services
Gastroenterology	Physical Therapy	Women’s Health Services
Geriatrics	Post-Acute Services	Wound Care and
Hospice	Post Hospital Services	Limb Preservation
Immediate Care	Primary Care Services	

TEST FIT OF SWEDISH HOSPITAL OVER ROSELAND HOSPITAL SITE



LAWNDALE CHRISTIAN MEDICAL CORRIDOR

- A

Resource Center: 7,200 sqft
IDHS: 12,000 sqft
Immediate Care / Pharmacy: 12,000 sqft
Total GFA: 31,200 sqft
Parking Area (44 Cars): 14,100 sqft
- B

Health Center: 9,500 sqft
Gym: 8,000 sqft
Administrative Offices: 16,000 sqft
Total GFA: 33,500 sqft
Parking Area (25 Cars): 11,300 sqft
- C

The Gallery
Total GFA: 3,700 sqft
- D

Operation Brotherhood, WIC, Meier Clinic
Total GFA: 5,500 sqft
Parking Area: (16 Cars): 6,100 sqft
- E

Receiving & Storage, Purchase Office
Total GFA: 3,100 sqft
Parking Area (26 Cars): 11,300 sqft
- F

Health Center: 24,000 sqft
Fitness Center: 20,000 sqft
Cafe: 5,000 sqft
Dental: 11,000 sqft
Conference Center: 4,000 sqft
Total GFA: 64,000 sqft
Parking Area (29 Cars): 12,000 sqft
- G

Parking Area (73 Cars): 30,000 sqft
- H

Parking Area (71 Cars): 31,000 sqft
- I

Vacant: 35,500 sqft
- J

Eye Clinic, Marketing Office, HIM, IT
Total GFA: 5,300 sqft
- K

Senior Center
Total GFA: 16,500 sqft
- L

Vacant: 26,500 sqft
- M

Farm on Ogden
Total GFA: 17,500 sqft
Parking Area 9 (Cars): 4,000 sqft



LAWNDALE CHRISTIAN MIXED-USE PROGRAM

55

± 200,000 SF

MEDICAL, FITNESS, FOOD, CULTURE, RETAIL

HEALTH CENTER = 75,000 sf (39%)

IMMEDIATE CARE | SENIOR CENTER | EYE CLINIC | DENTIST

OFFICE = 38,000 sf (20%)

FITNESS CENTER = 28,000 sf (14%)

GYM | INDOOR TRACK

RESOURCE CENTER = 15,000 sf (8%)

GALLERY | MEETING ROOMS | CONFERENCE ROOMS

RETAIL = 15,000 sf (8%)

FOOD | BEVERAGE

CULTURE/EDUCATION = 18,000 sf (9%)

IT/STORAGE = 5,000 sf (2%)

LAWNDALE CHRISTIAN

Lawndale Christian Health Center has its roots in the efforts of a group of community residents, largely high school students, who formed a sports-based youth group which eventually grew into Lawndale Community Church – a community that is still growing and serving in North Lawndale today.

Members of the church and neighborhood began to hold meetings to discuss ways they could meet the needs of their own community. At the top of their list was a desire to address the lack of affordable, quality healthcare services in North Lawndale and on the West Side of Chicago.

A dream turned into reality when the church was able to buy a building on Ogden Avenue which would house the church offices, a small clinic, and a full-size basketball court for the community to enjoy. The Chicago Community Trust gave a \$150,000 grant – the Health Center’s first – for the building renovations to be completed.

With renovations completed, the Health Center officially opened in September 1984 with a community health fair. People were invited in for free health screenings and could book their first appointments.

In the beginning, there were just four exam rooms, one physician, and a staff of five. Three decades later, there are **+100 medical providers across 6 clinic locations**.

HEALTH SERVICES:

- Adult Health

Behavioral Health

Children’s Health

Dental

HIV Care

Immediate Care

Optometry

Pharmacy
- Senior Services

Specialty Care

Substance Use Treatment

Women’s & Prenatal Health

TEST FIT OF LAWNDALE PROGRAM OVER ROSELAND HOSPITAL SITE



HOW DO YOU ENVISION THE MEDICAL DISTRICT?

57




PIECES OF THE VISION

SMALL GROUP BREAKOUT DISCUSSION


PLEASE DISCUSS AND SHARE YOUR THOUGHTS ON THESE QUESTIONS.....

59

- 
- 1. WHAT DOES A MEDICAL DISTRICT MEAN TO YOU?**
 - 2. HOW SHOULD THE MEDICAL DISTRICT BENEFIT PEOPLE IN THE COMMUNITY?**
 - 3. WHAT ARE THE BIGGEST CHALLENGES OR OBSTACLES THAT MUST BE ADDRESSED?**
 - 4. WHAT DO YOU WANT PEOPLE OUTSIDE OF THE COMMUNITY TO KNOW ABOUT THE COMMUNITY?**

WHAT DID YOUR GROUP SAY?

WHAT DID YOUR GROUP SAY?

- 1. WHAT DOES A MEDICAL DISTRICT MEAN TO YOU?**
 - 2. HOW SHOULD THE MEDICAL DISTRICT BENEFIT PEOPLE IN THE COMMUNITY?**
 - 3. WHAT ARE THE BIGGEST CHALLENGES OR OBSTACLES THAT MUST BE ADDRESSED?**
 - 4. WHAT DO YOU WANT PEOPLE OUTSIDE OF THE COMMUNITY TO KNOW ABOUT THE COMMUNITY?**
- 

INVITATION | PUBLIC MEETING NOTICE

ROSELAND COMMUNITY MEDICAL DISTRICT MASTER PLAN

“WHAT DOES A MEDICAL DISTRICT MEAN TO YOU?”

“WHAT CAN YOU DO TO HELP?”

“WHAT ABOUT THE OTHER PLANS BEING DONE NOW?”

“WHAT KIND OF THINGS HAPPEN IN A MEDICAL DISTRICT?”

“HOW CAN THE MEDICAL DISTRICT HELP WITH COMMUNITY NEEDS?”

“HOW CAN THE MEDICAL DISTRICT CREATE JOBS?”

“WHO WILL BENEFIT FROM THE MEDICAL DISTRICT?”

info@greaterroselandchamber.org
katanya@farsouthcdc.org

YOU ARE INVITED and encouraged to participate in planning for the **Roseland Community Medical District Master Plan**.

YOUR VOICE IS ESSENTIAL if the needs of **residents** and **community stakeholders** are to be heard and addressed.

MAKE PLANS TO ATTEND two public meetings this year. The first is a **community conversation** about the issues and opportunities associated with the Medical District. The second is an interactive **community design workshop**.

SAVE THE DATES and make plans to attend. Both meetings will include **group discussion**, **small-group work sessions** and **food**.

MEETING ONE: COMMUNITY VISION DISCUSSION
SAT, NOV 6; 10 AM – 2 PM
Doors Open 10:00 am
Workshop 10:30 am-1:00 pm
Open House 1:00-2:00 pm

MEETING TWO: COMMUNITY DESIGN WORKSHOP
SAT, DEC 11; 10 AM – 2 PM
Doors Open 10:00 am
Workshop 10:30 am-1:00 pm
Open House 1:00-2:00 pm

WHERE: LAVIZZO ELEMENTARY
138 W 109th St, Chicago (Both Meetings)

* ID required for Check-In by CPS

Live Stream Option: <https://us06web.zoom.us/j/85902408511>

★ DPD ADRIAN SMITH | GORDON GILL ARCHITECTURE GFI CHICAGO ARCHITECTURAL PARTNERSHIP FARSOUTH B&B 100 RE Johnson & Lee, Ltd

NEXT MEETING.....

DECEMBER 11

COMMUNITY DESIGN WORKSHOP

ANDREA REED

info@greaterroselandchamber.org

773.785.4000

KATANYA RABY

katanya@farsouthcdc.org

773.830.2975