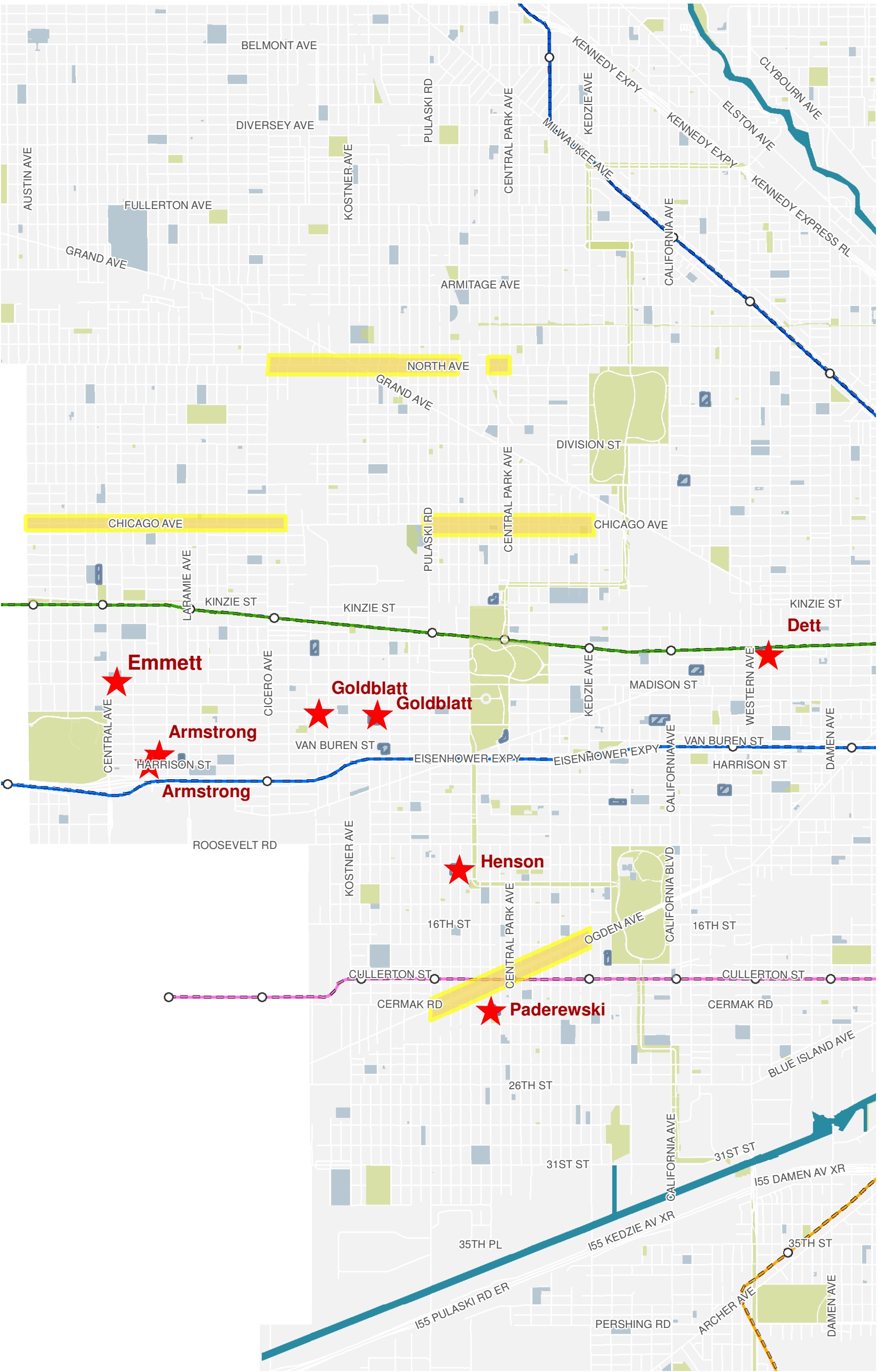


Chicago Public School Buildings



- CPS Buildings No Longer in Use
- Invest South & West Corridor
- CTA
- Parks and Boulevards
- School Grounds
- Closed CPS Schools

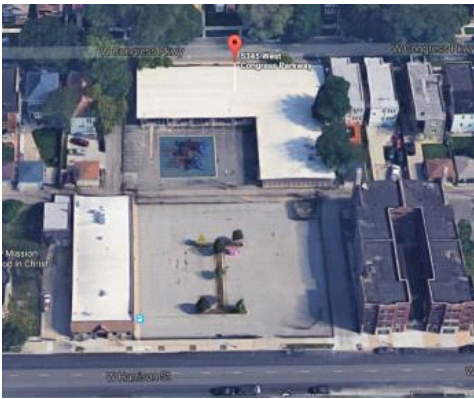
Louis Armstrong School and

5345 W Congress (Main)

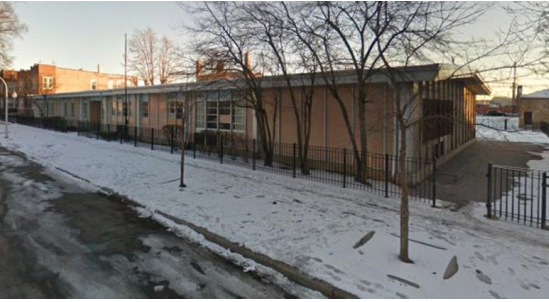
And

5400 W Harrison (Annex – left of parking lot)

Modernist one story building



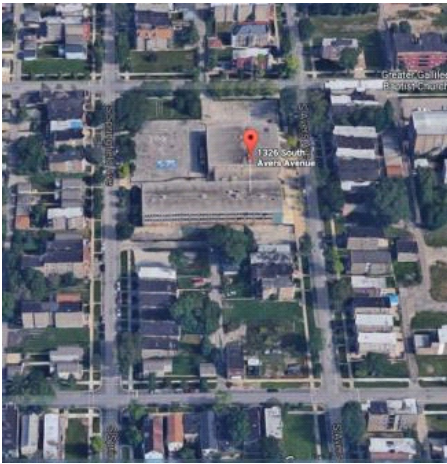
Annex



Henson School

1326 S Avers.

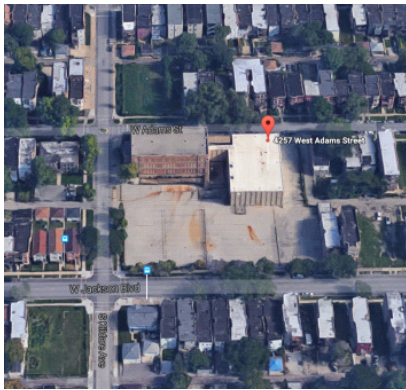
Three and one story elements,



Goldblatt School

4257 W Adams St.

Includes vacant lot at ne corner of Kildare with modernist 3 story addition to the east.



Emmett School

5500 W Madison

3 Story Pre WW II



Dett School

2306 W Maypole Avenue

Three stories 1970s, right next to Lake Street L

Recommendation:

Demolish and expand Gates Park



Paderewski School

Three story structural modernist building

