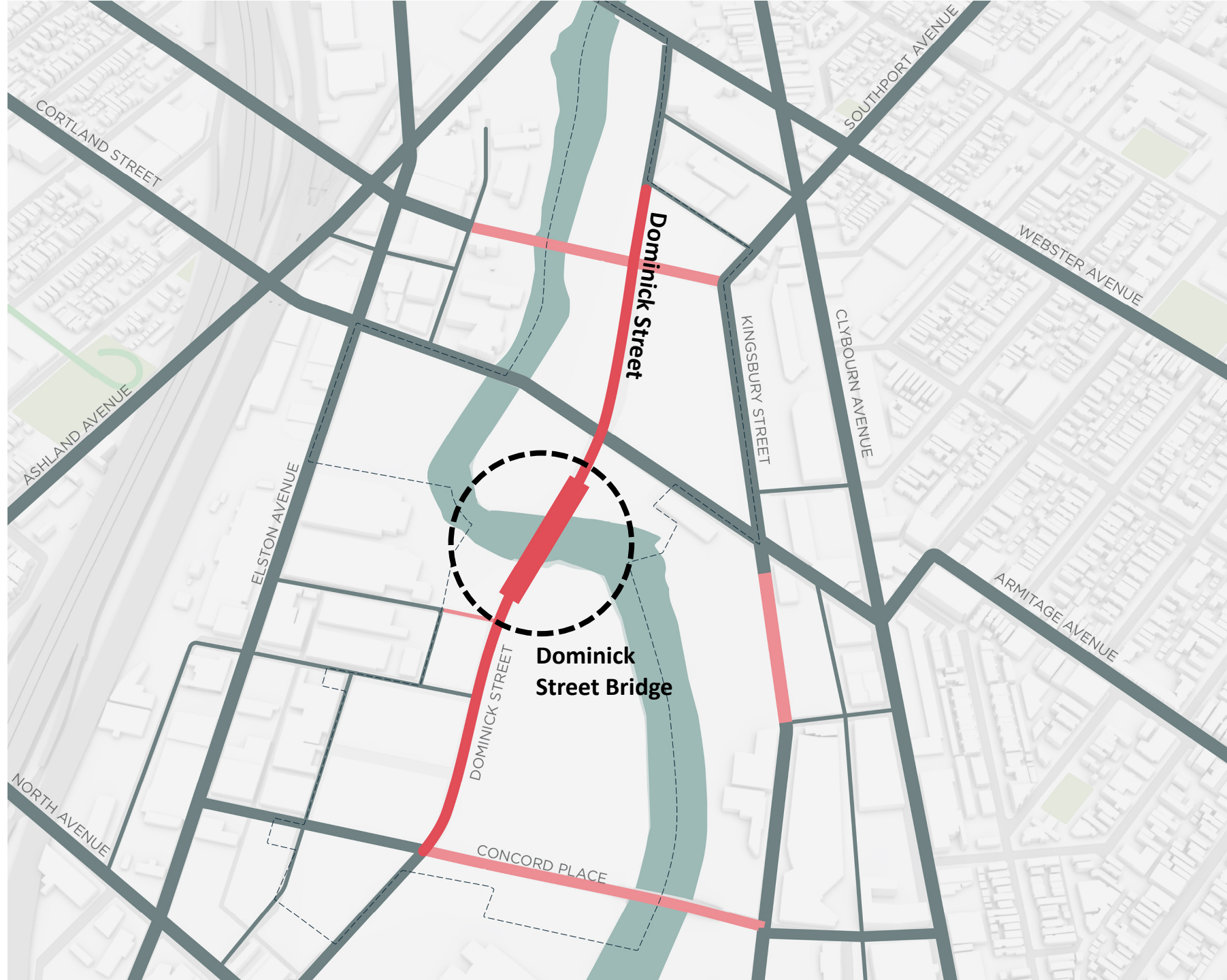


Dominick Bridge at Lincoln Yards



Dominick Street and Bridge



Dominick Street

Design Features:

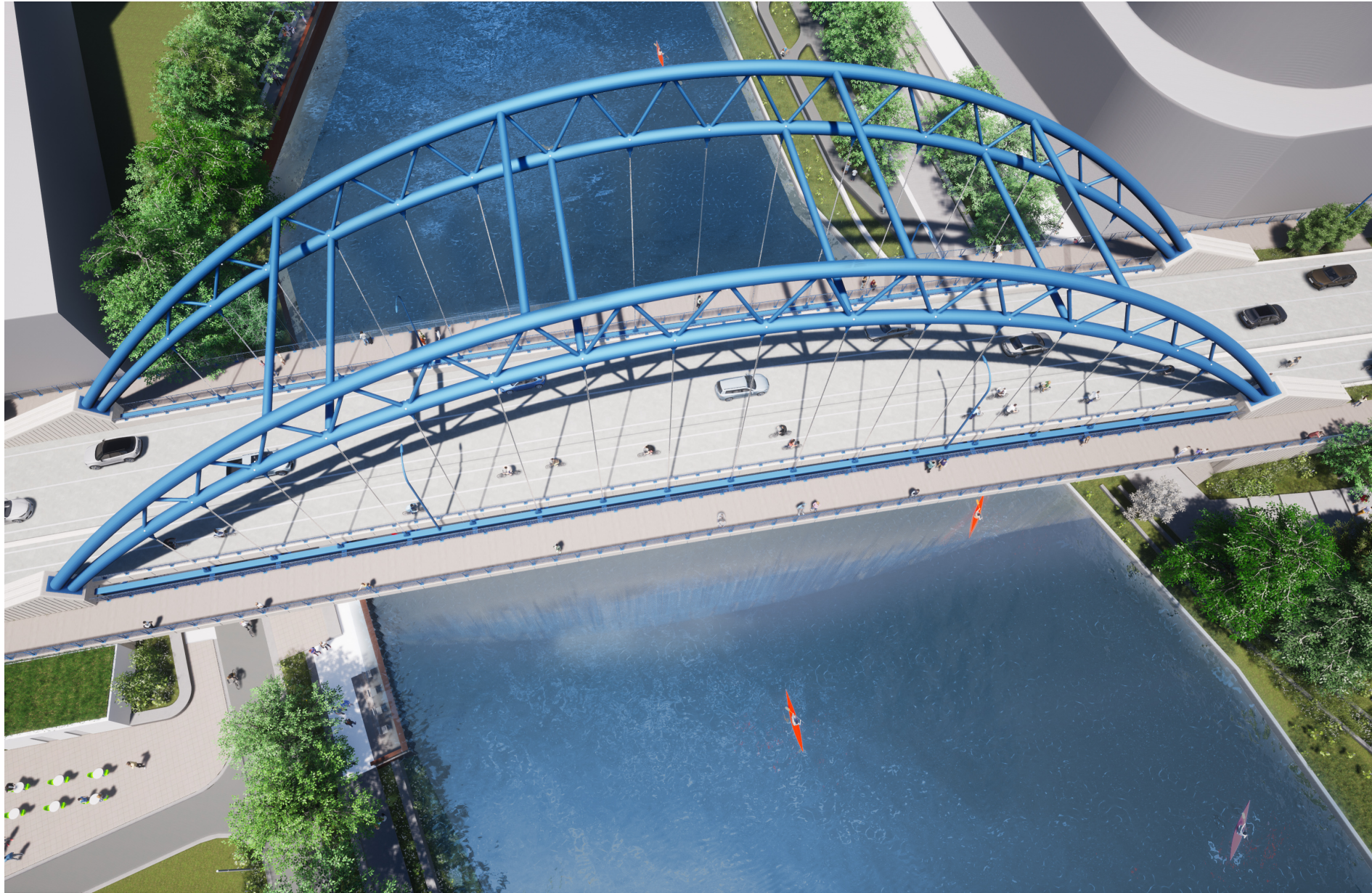
- Emphasize the pedestrian and slower moving vehicles
- Special paving from Armitage to Cortland
- Integration with park
- Increased landscape with double row of trees along park edge
- Increased sidewalks
- Active ground floor uses
- Café zones – expanded setback zone recommended (+6')
- Integrated drop-off zones

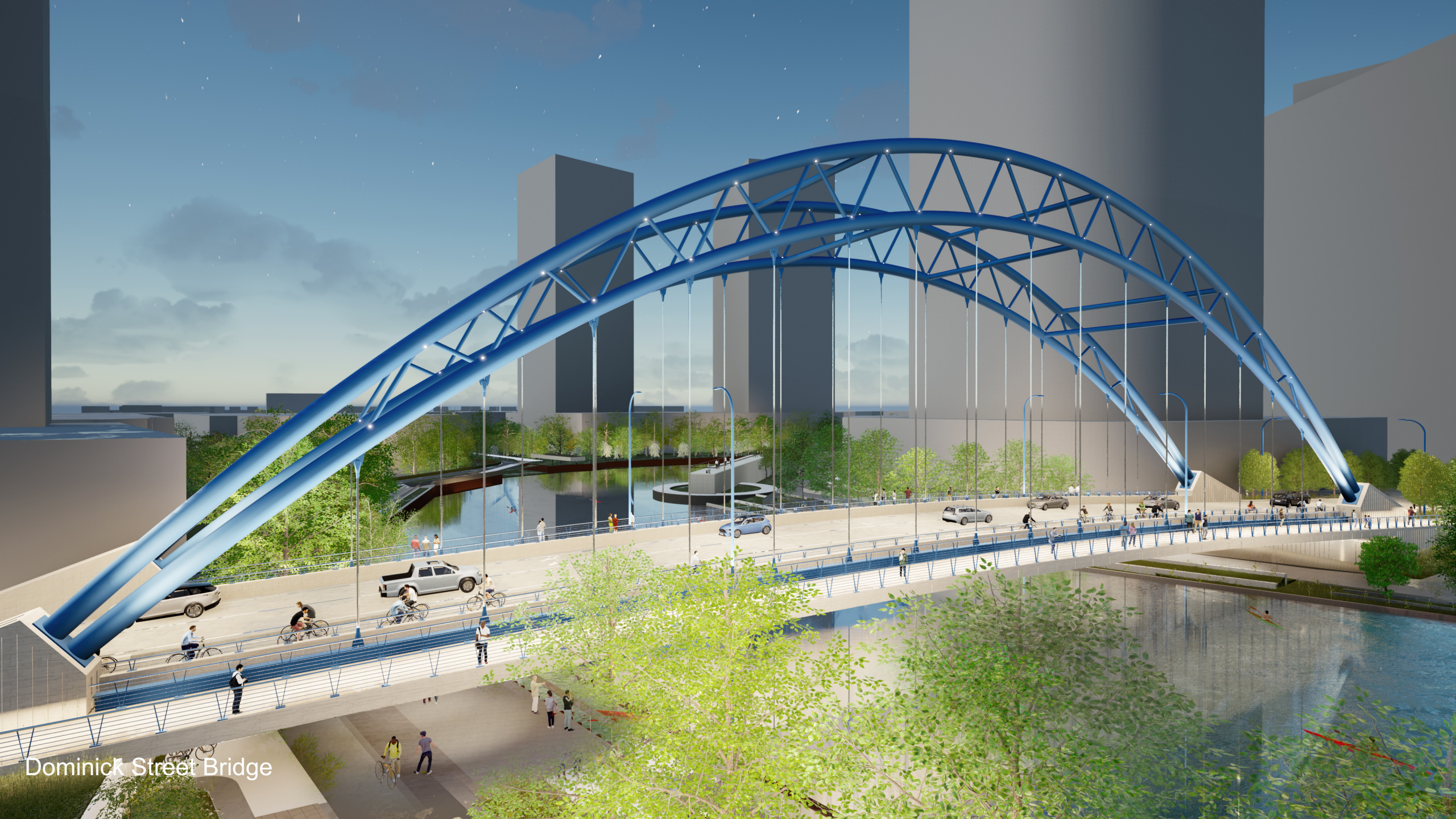


Dominick Street Bridge

A steel truss arch signature bridge

- Links Lincoln Yards across the river
- Accommodates multiple users:
 - Vehicles
 - Pedestrians
 - Bikes

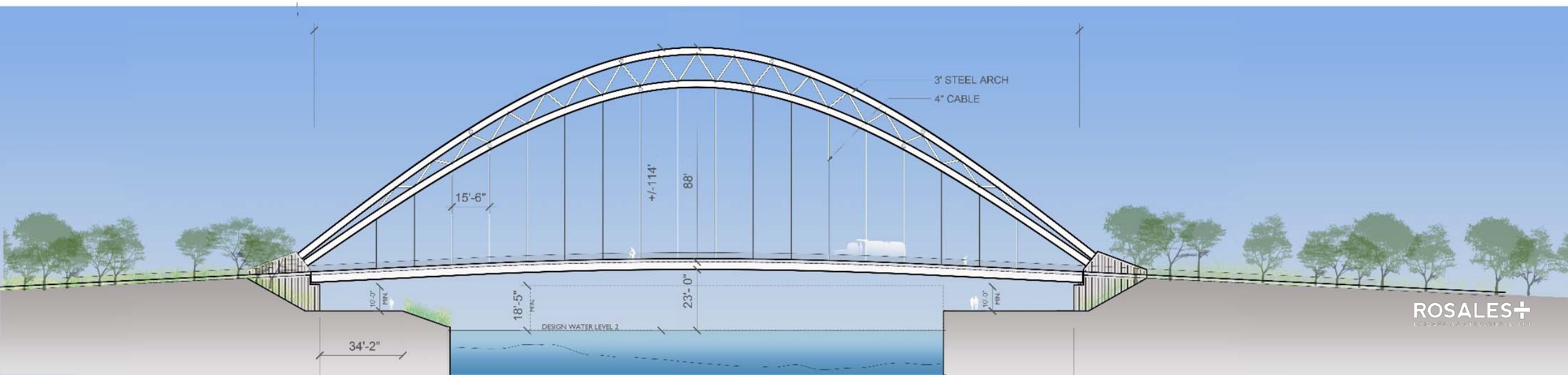
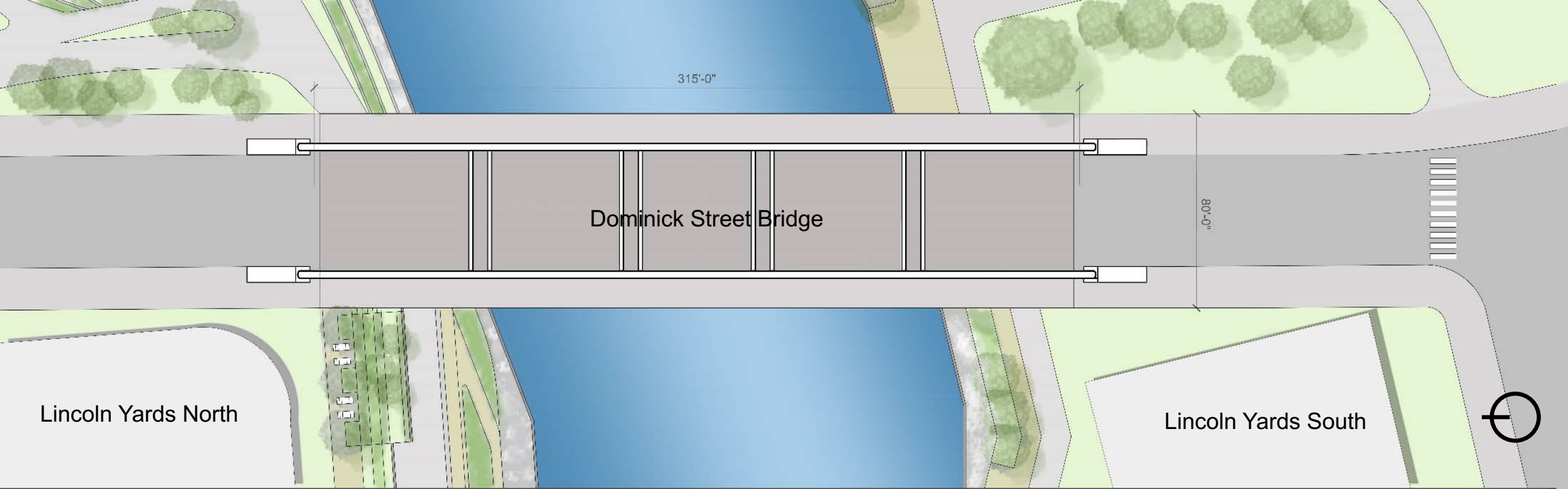




Dominick Street Bridge



Dominick Street Bridge



Dominick Street Bridge Section

80' ROW

- 10' Pedestrian Sidewalk
- 12' Driving Lanes
- 14' Dual Direction Bike Path

