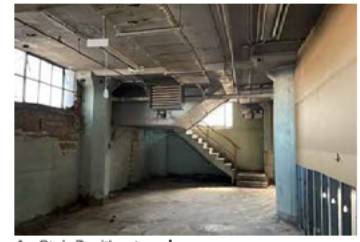
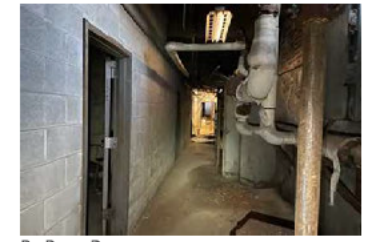


Basement Floor Plan



A - Stair B without enclosure



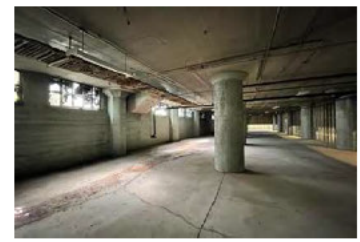
B - Pump Room



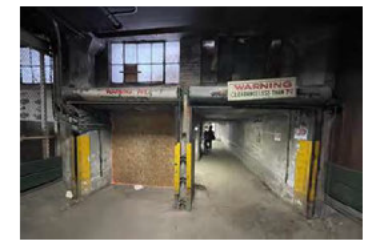
C - Utility Tunnel



D - Utility Tunnel

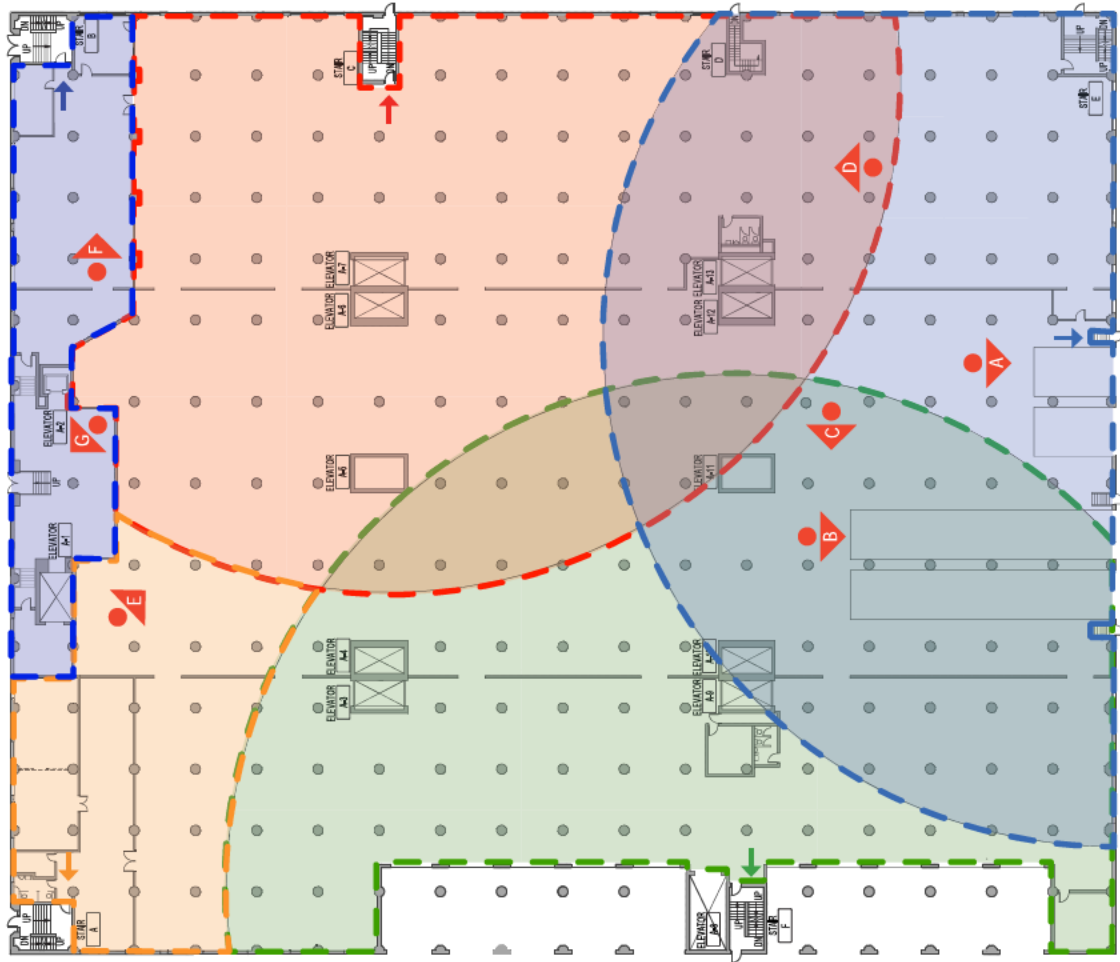


E - East of Basement



F - Tunnel to Central Building





First Floor Plan

EXIT ZONES
150' TRAVEL DISTANCE PER SECTION 14X-12-1202.6.6

First Floor Existing Diagram: Section 14X-12-1202.6.6 Requires maximum 150' travel distance to an exit from any point on the ground floor. The diagram on the attached floor plan indicates that a total of 5 exits (Stair A, Stair B, Stair C, east exit at south elevation and Stair F) would need to be maintained for exiting from the building. The main entrance, center and east exits at the north side may be eliminated by modifying interior partitions. One exit would need to be maintained at building 'entrance'.



B - Rubbish at loading dock



D - Stored materials and rubbish at east side



F - Office bulbout with damaged finishes at the north of floor



B - Loading dock to south



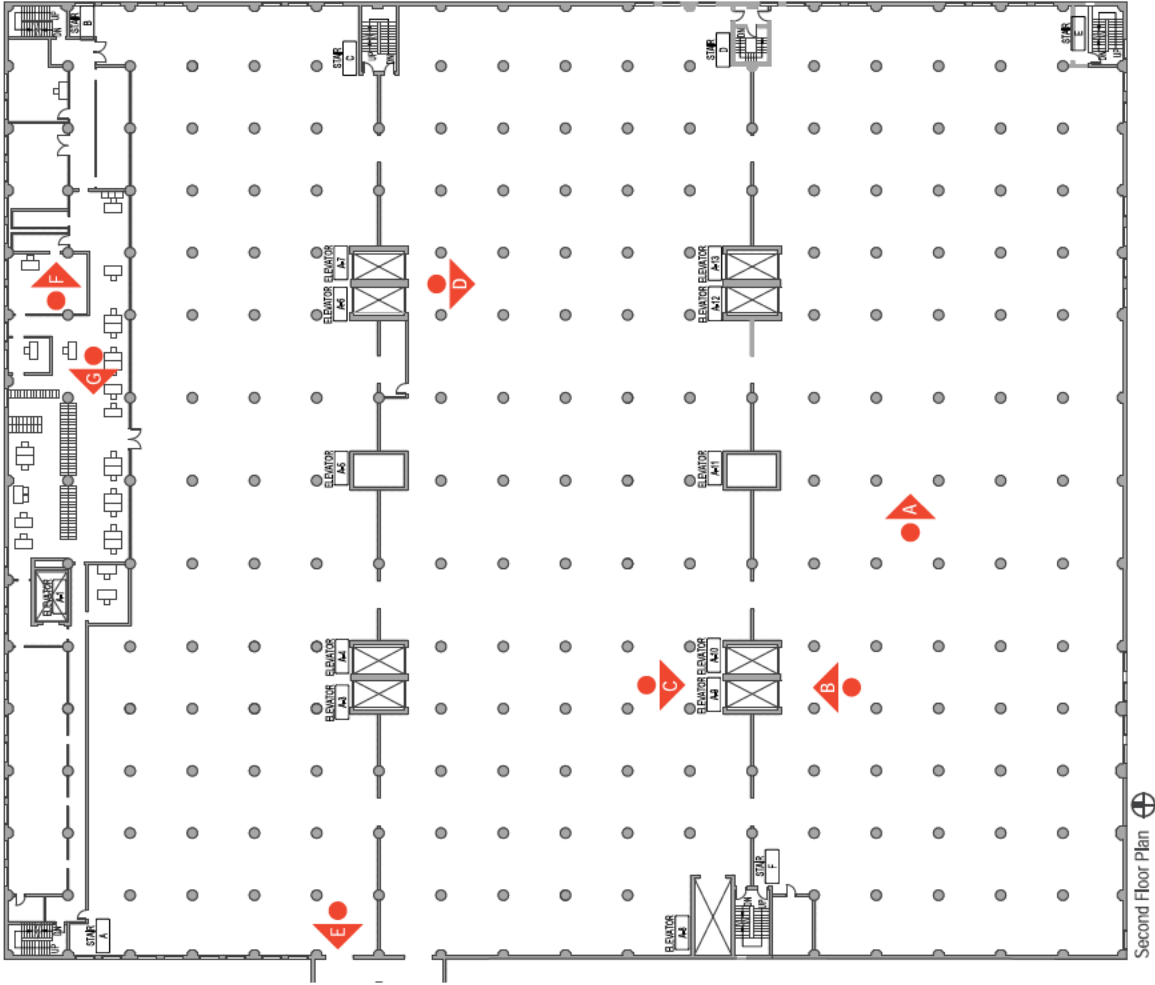
C - Some bulbouts along at the center portion of the floor



E - Stored materials at the north of the floor



G - Center entrance to Pershing Road obstructed with plywood



Second Floor Plan



A - South side of floor



B - Deteriorated Lintel Elevator 9



D - Chain Link Fenced Area and rubbish



F - Buildout at north of floor and rubbish



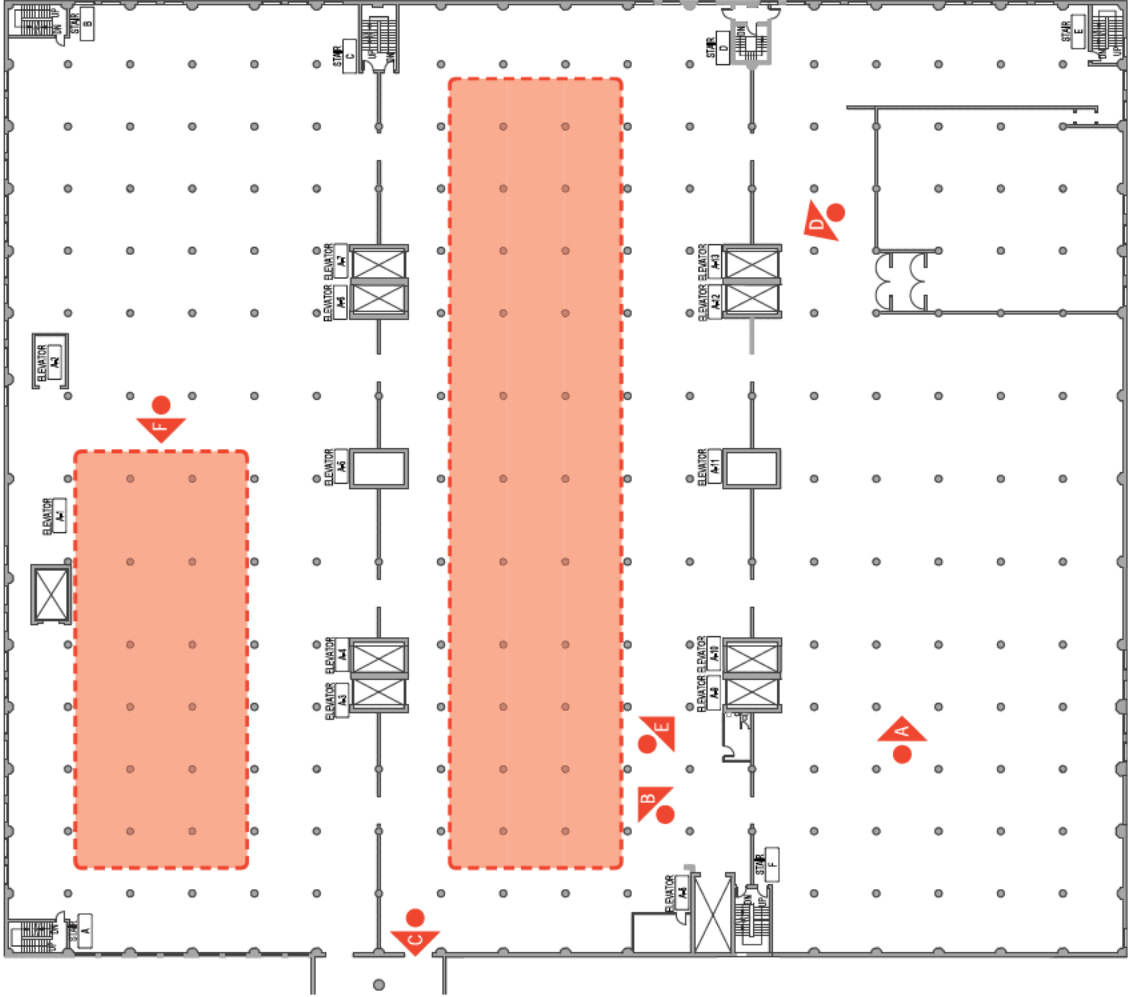
C - Deteriorated Lintel Elevator 9



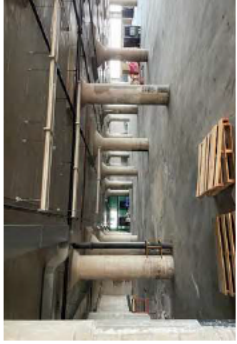
E - Bridge to Central Building



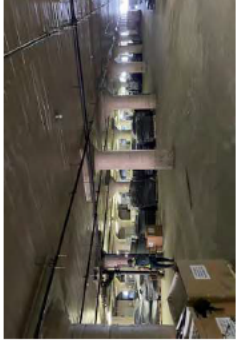
E - Buildout at north of floor and rubbish



Third Floor Plan BOE Storage



A - South area of floor



B - BOE Storage center of building



C - BOE storage on the bridge to Central Building



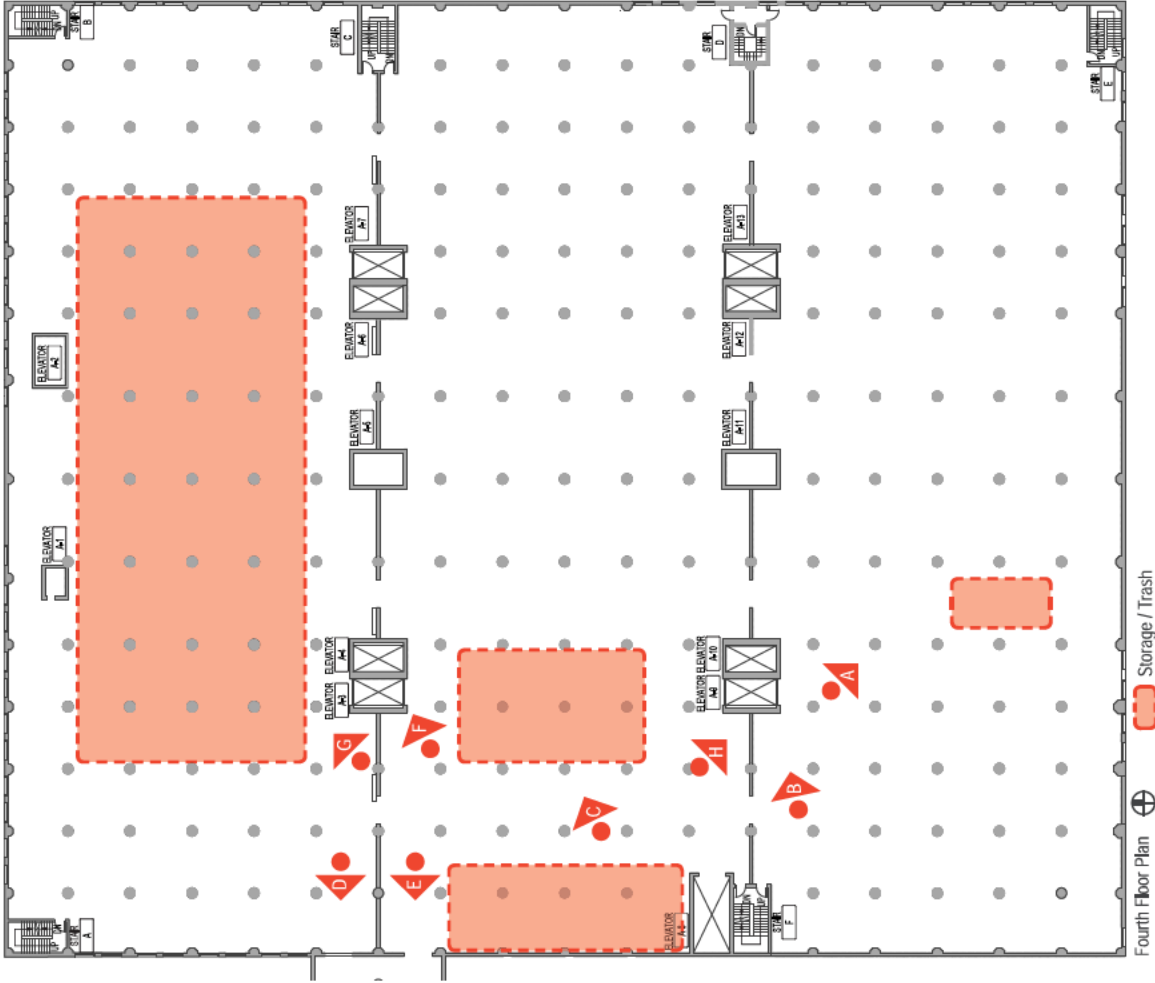
D - Elevator Lintel Deterioration



E - Elevator Lintel Deterioration



F - BOE storage at north side of floor



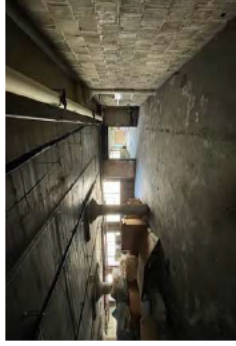
Fourth Floor Plan  Storage / Trash



A - Rubbish at south of floor



C - Trash at center portion of floor



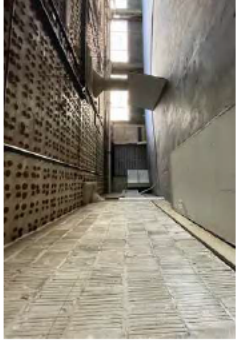
E - Boarded up opening at the 1819 side of the bridge



G - Abandoned materials at north side of floor



B - Damaged elevator



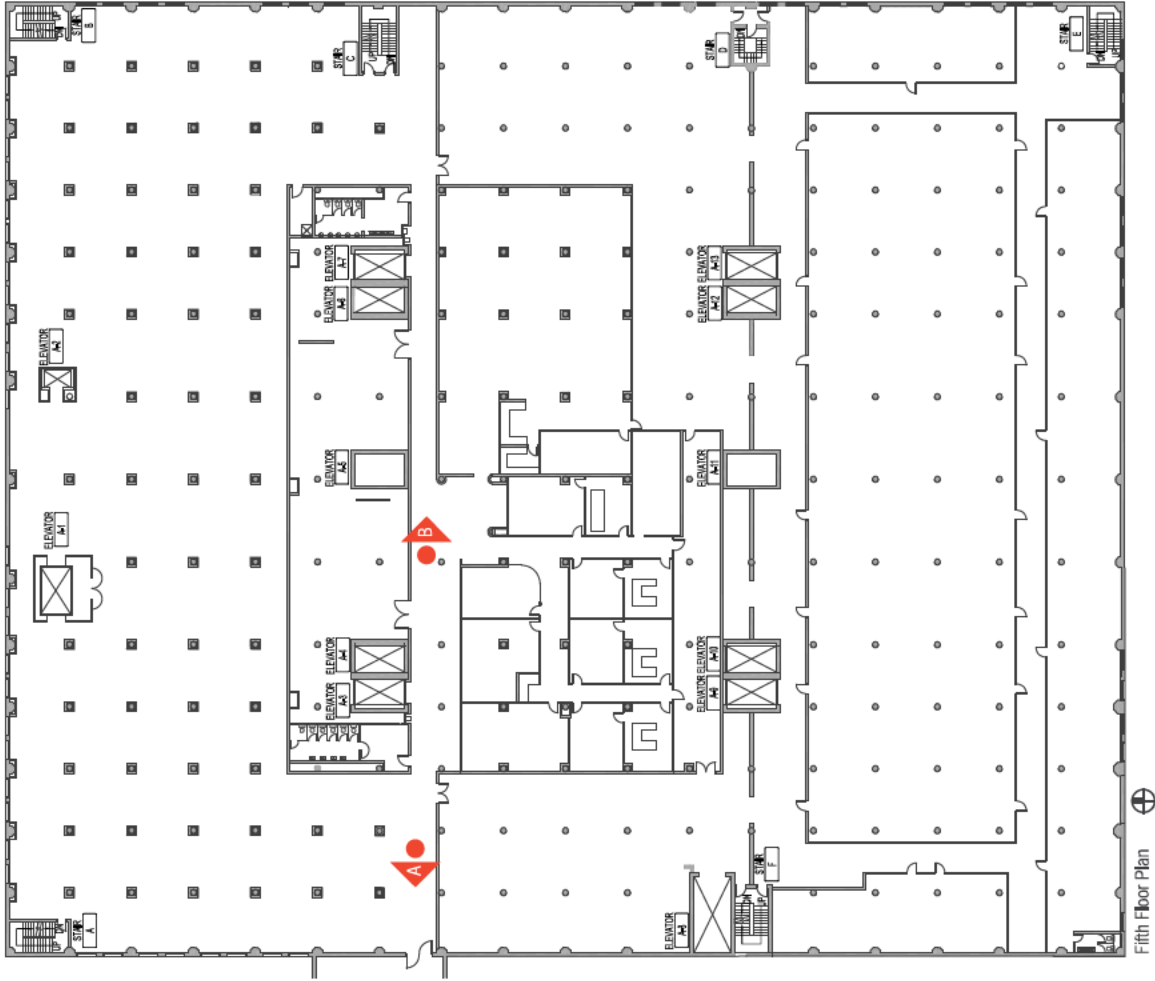
D - Masonry fill at existing bridge



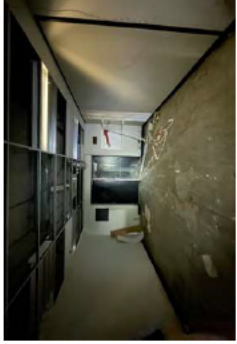
F - Abandoned freight elevator



H - Existing piping and plumbing fixtures



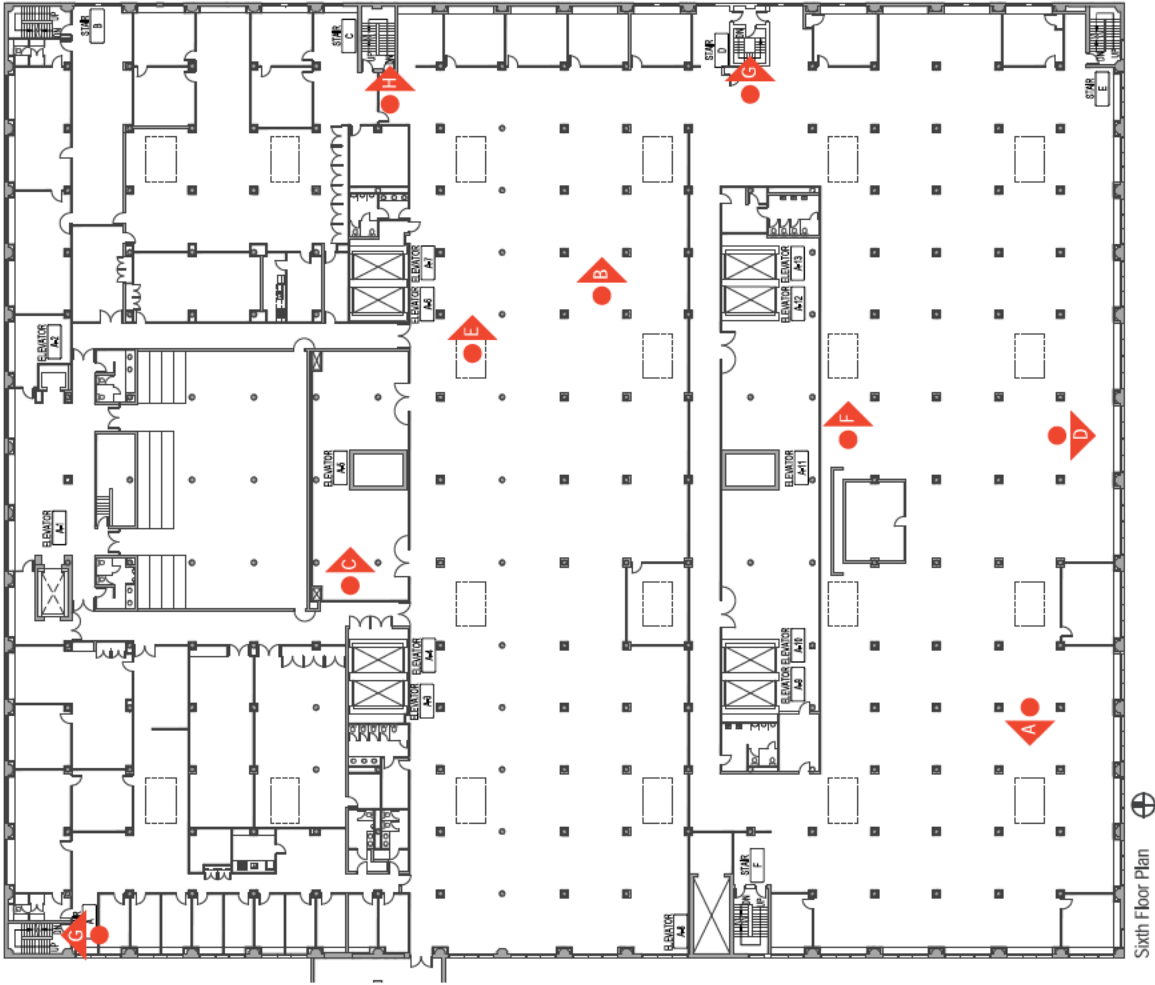
Fifth Floor Plan



A - Door to bridge connecting the East and Central Building



B - Interior Bulkheads and abandoned furnishings



Sixth Floor Plan



A - Moss growing at floor areas below skylights



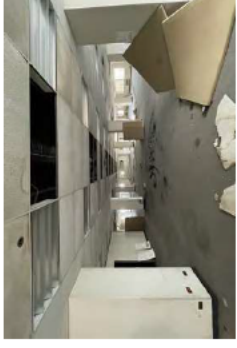
C - Abandoned mechanical units



E - Partition and bulkhead, abandoned equipment



G - Stair A with cage extended from the intermediate landing of 5th to 6th Floor



B - Interior built-outs and damaged materials



D - Deteriorated wall assembly



F - Concrete core built around freight elevator



H - Guardrail at Stair C

