

#9 Pilsen/Little Village

This submarket includes the heart of Chicago's Mexican-American community, with concentrations of independently owned shops lining 18th Street in Pilsen and 26th Street in Little Village. Four shopping centers anchored by grocery stores are located along Cermak (22nd Street).

Demographics

	2000	2010	2012*
Population	133,752	113,967	114,930
Households	31,609	29,880	30,054
Median HH Income*			\$29,318

Median Age	28.7
1 Person Households	5,413 18.1%
All Households with Children	14,885 49.8%
All Households 65+	3,711 12.4%

Square Miles	7.0
Population Density per Square Mile	16,419
SF of Land in Parcels Zoned B, C, D & BPD	14.8M
SF of Ground Floor Area Zoned B, C, D & BPD	7.7M
Total Employment	26,023

Source: US Census Bureau, Esri, Dun & Bradstreet *2012 Estimate

Submarket Inventory

Shopping Centers

5 neighborhood centers with 30,000 to 125,000 SF:
Cermak Center, Cermak Plaza, Little Village Plaza, Fairplay Plaza, Plaza del Portal

Big Box Retailers

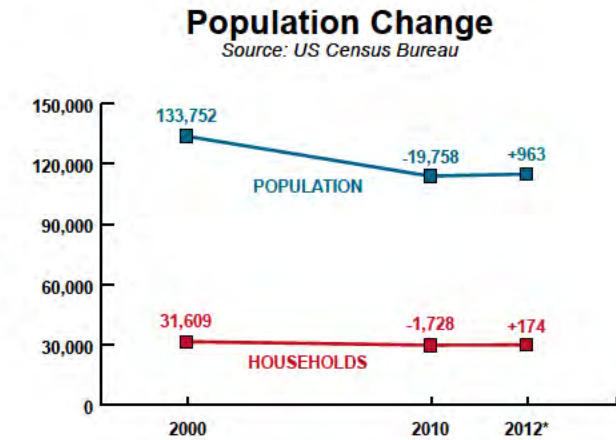
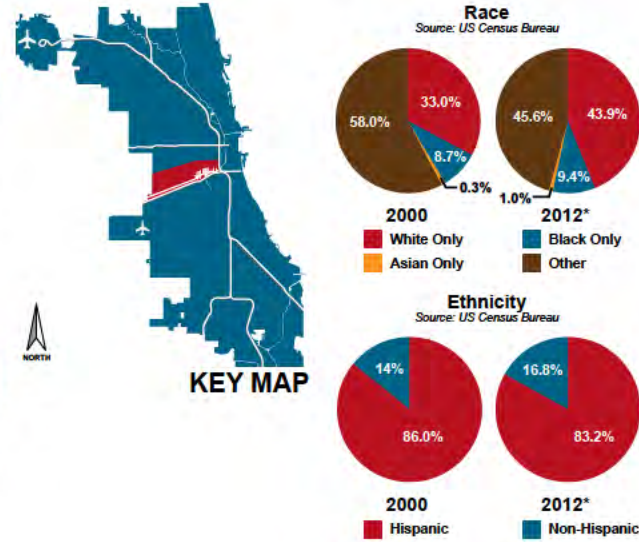
1 Walmart

Grocery Stores

2 ALDI
2 Cermak Fresh Market
1 Fairplay Foods
1 Pete's Fresh Market

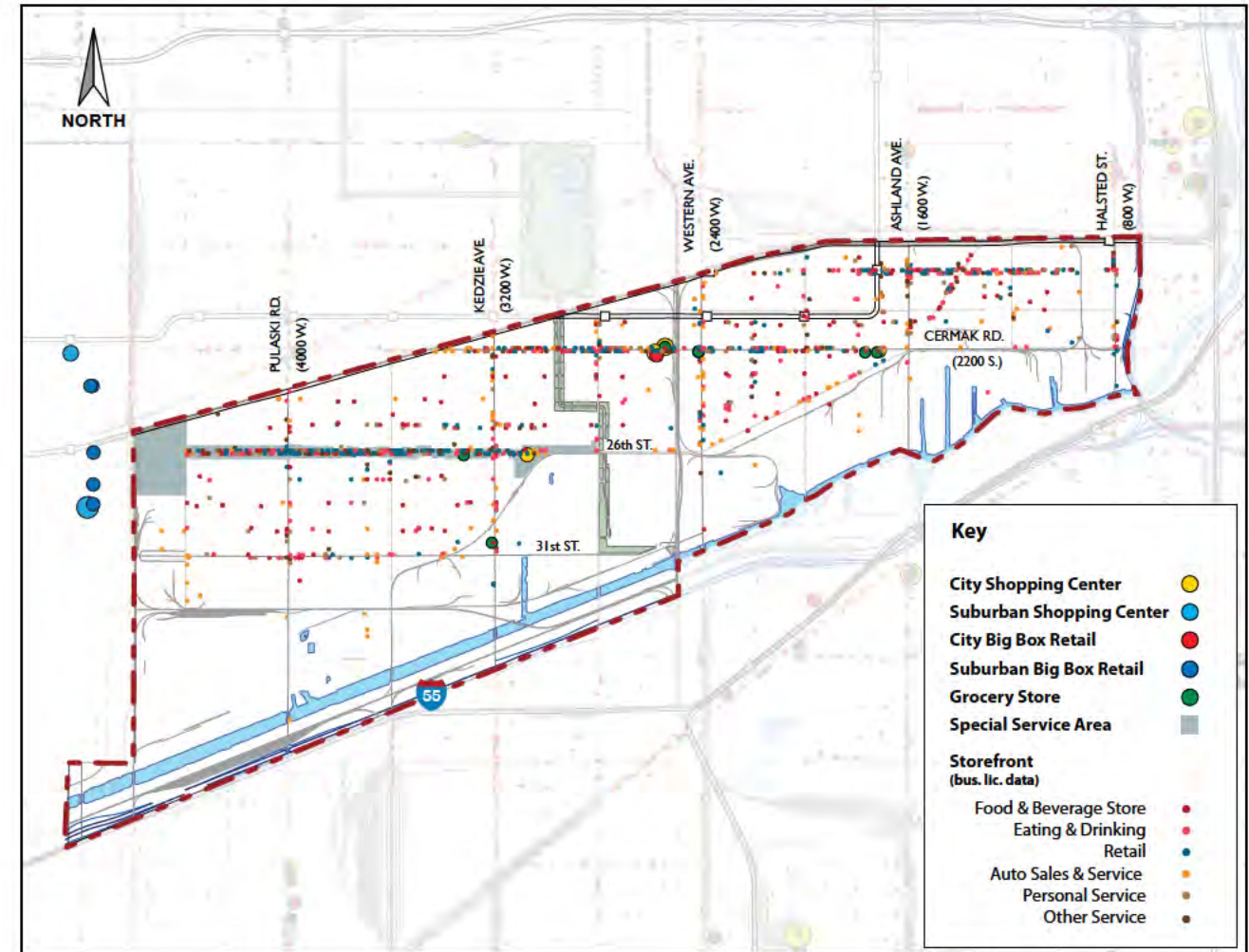
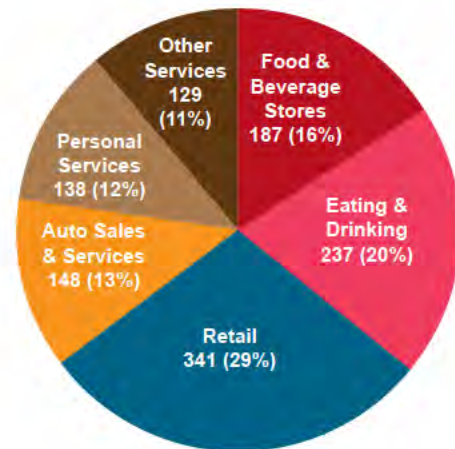
Special Service Areas

Little Village #25



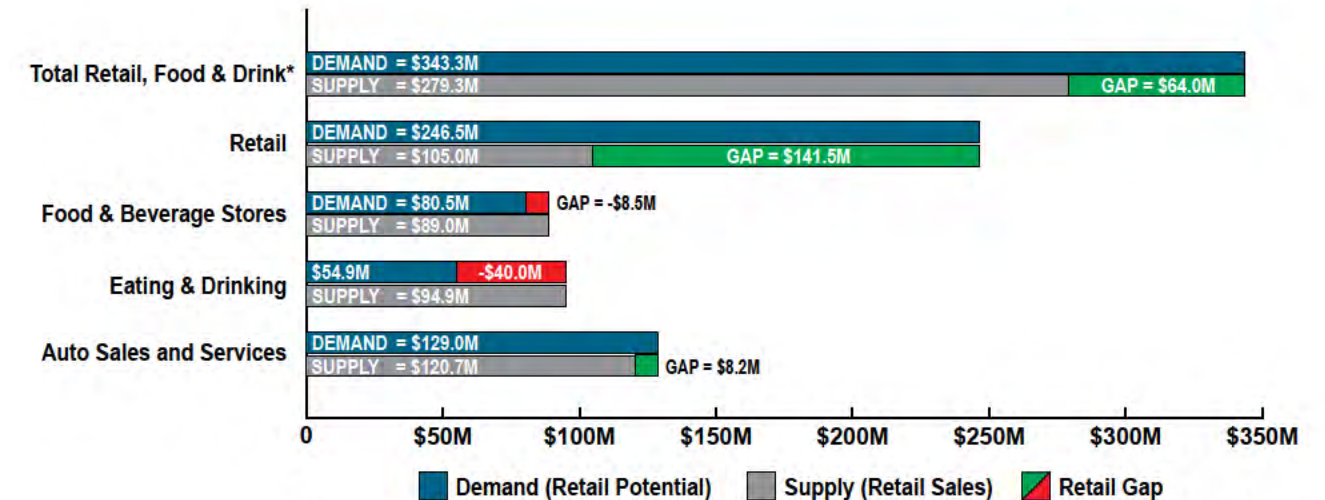
Submarket Business Licenses

Source: City of Chicago



Submarket Inventory Map

Submarket Gap Analysis



*Excludes Non-store Retailers and Auto Sales and Services

Source: Esri Business Analyst