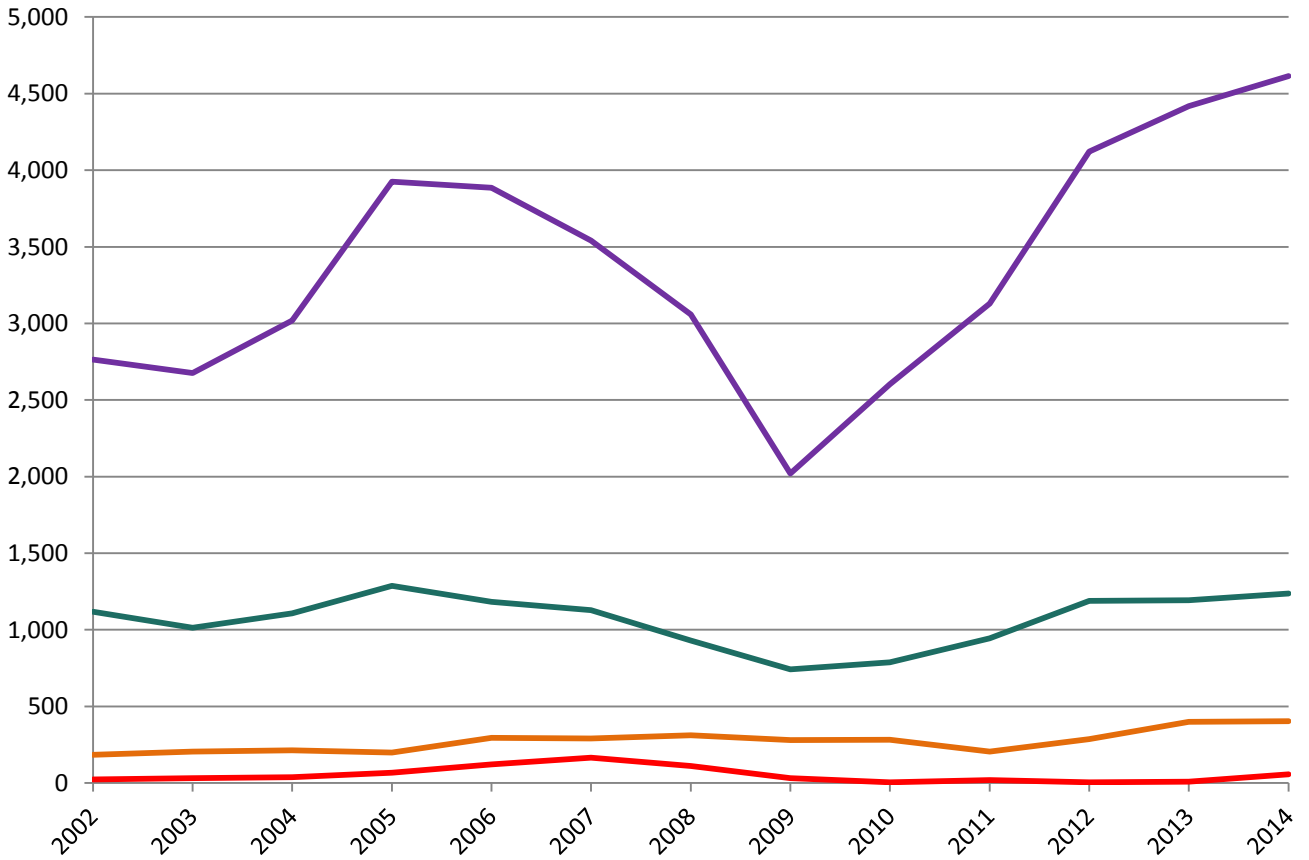


Calumet Industrial Corridor

Core Jobs – 2002-2014

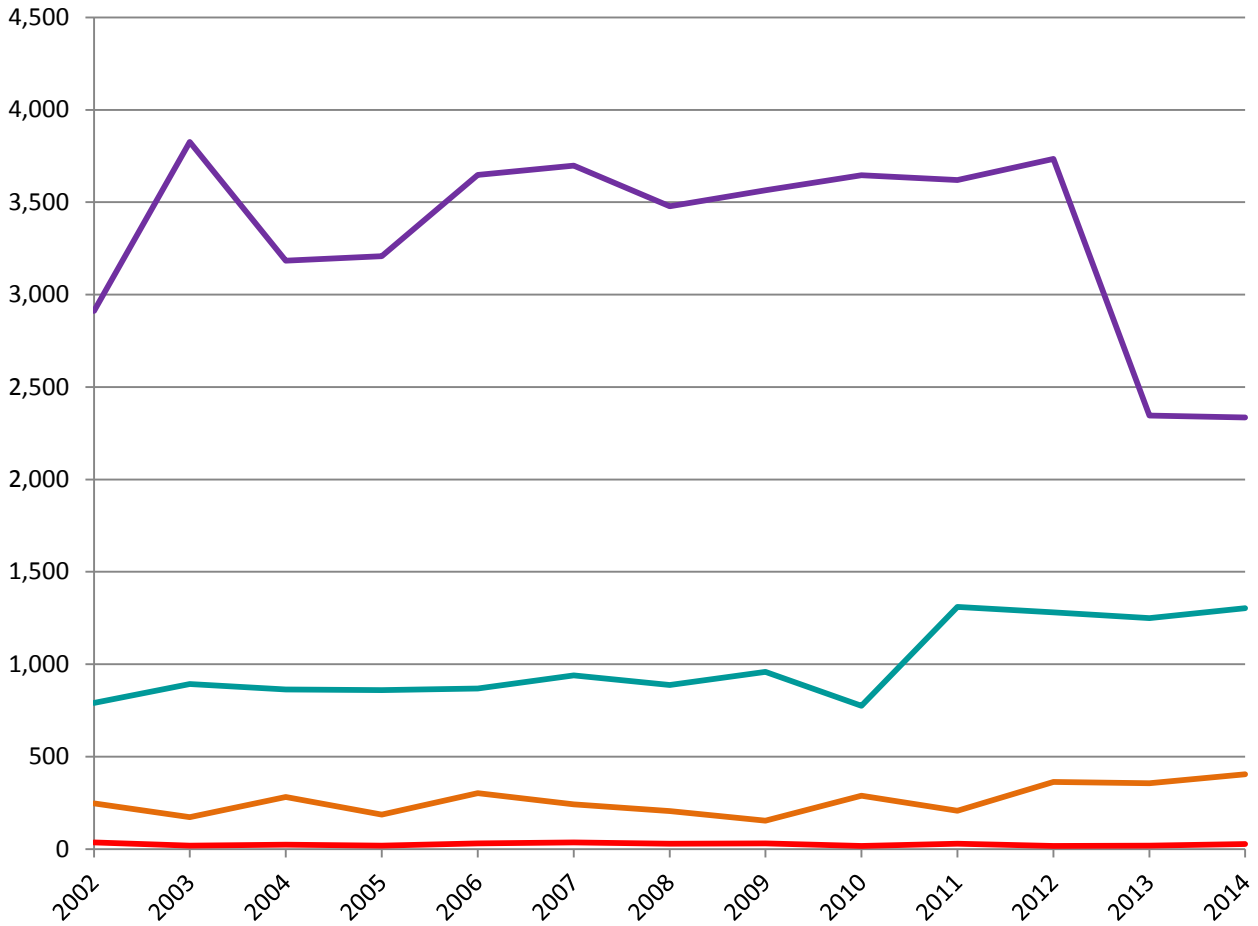


Year	Manufacturing	Moving, storing goods & materials; construction	Information, technology & mangement	Business Support Services
2002	2,764	1118	23	185
2003	2,677	1013	31	206
2004	3,018	1108	38	213
2005	3,925	1288	68	198
2006	3,886	1183	121	295
2007	3,540	1128	166	291
2008	3,058	931	111	312
2009	2,020	741	31	280
2010	2,603	788	5	283
2011	3,130	944	19	206
2012	4,121	1190	5	286
2013	4,419	1194	8	399
2014	4,614	1236	56	403

- Manufacturing
- Moving & Storing of Goods & Materials and Construction
- Information, Technology and Management
- Business to Business

Greater Southwest Industrial Corridor

Core Jobs – 2002-2014



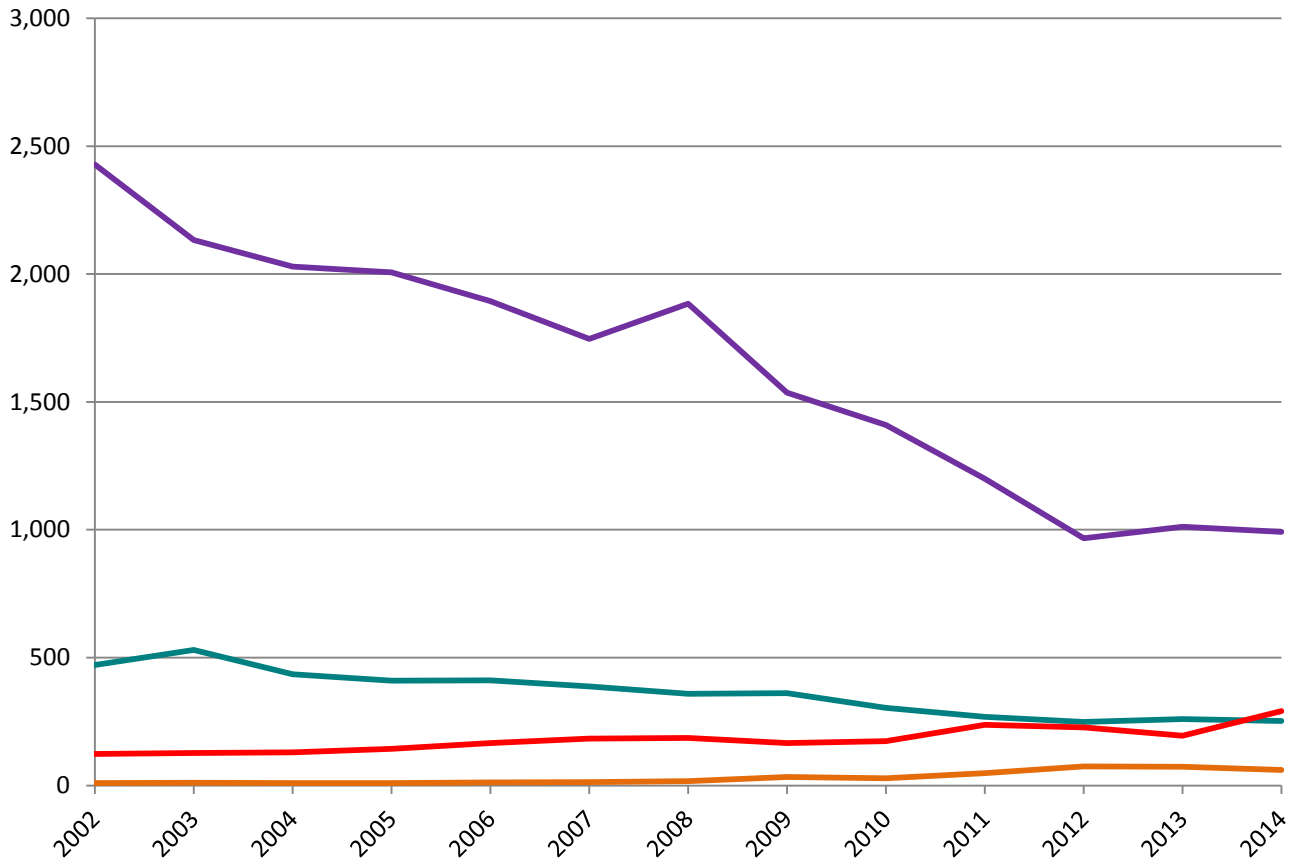
Year	Manufacturing	Moving, storing goods & materials; construction	Information, technology & management	Business Support Services
2002	2,912	790	36	247
2003	3,826	893	18	172
2004	3,184	863	24	281
2005	3,208	860	19	186
2006	3,648	868	30	302
2007	3,698	939	36	241
2008	3,478	887	28	206
2009	3,564	958	31	154
2010	3,646	775	17	289
2011	3,621	1,311	28	208
2012	3,734	1,281	17	363
2013	2,345	1,249	19	356
2014	2,335	1,304	27	405

- Manufacturing
- Moving & Storing of Goods & Materials and Construction
- Information, Technology and Management
- Business to Business

Armitage Industrial Corridor

Core Jobs – 2002-2014

Trend: Predominately Manufacturing

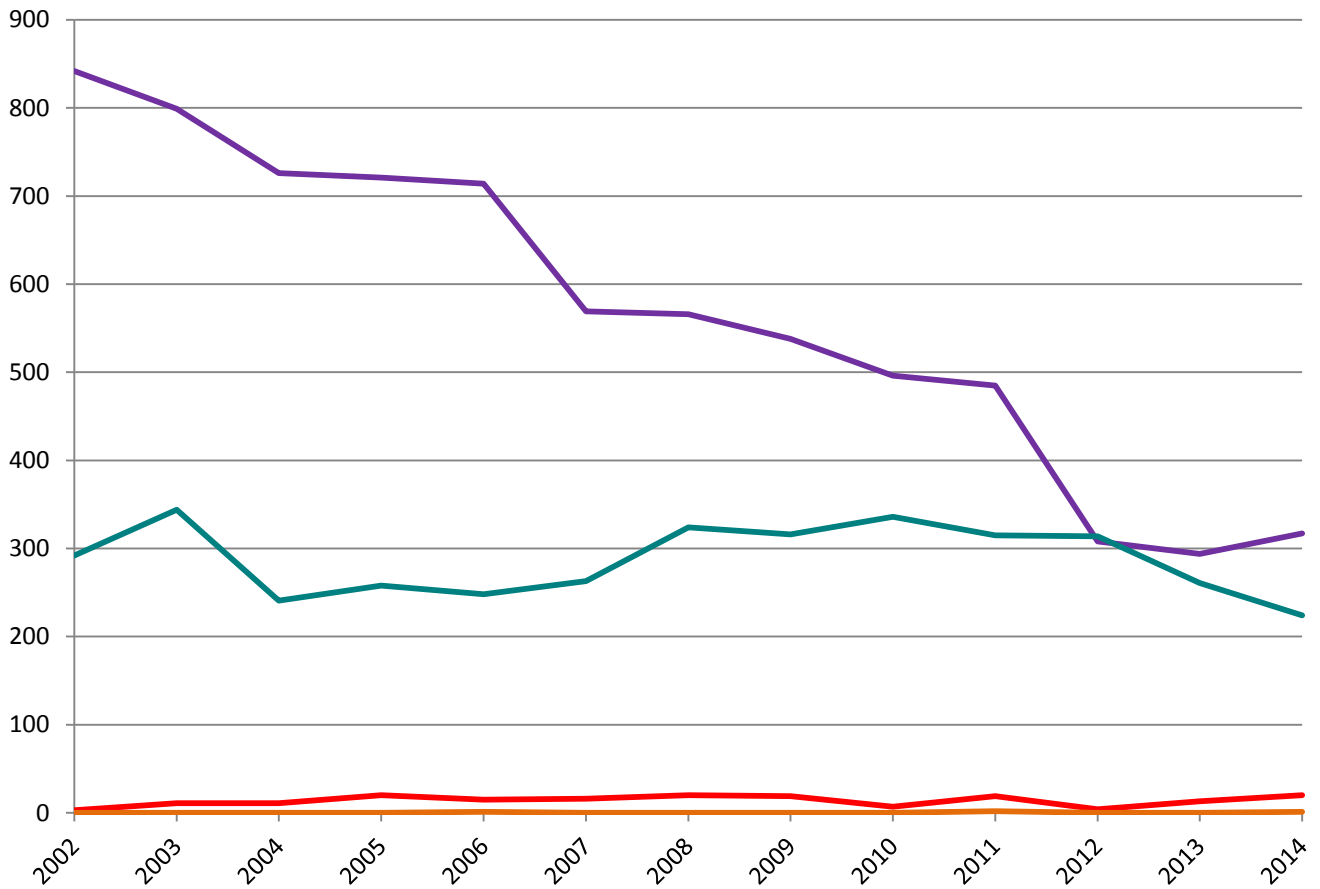


Year	Manufacturing	Moving, storing goods & materials; construction	Information, technology & management	Business Support Services
2002	2,428	471	123	10
2003	2,133	530	127	11
2004	2,029	435	130	10
2005	2,007	410	143	10
2006	1,894	411	166	12
2007	1,746	387	183	14
2008	1,884	359	186	17
2009	1,536	361	166	33
2010	1,410	304	173	28
2011	1,200	269	238	49
2012	967	249	227	75
2013	1,012	260	195	74
2014	992	252	291	61

- Manufacturing
- Moving & Storing of Goods & Materials and Construction
- Information, Technology and Management
- Business to Business

Kennedy Industrial Corridor

Core Jobs – 2002-2014

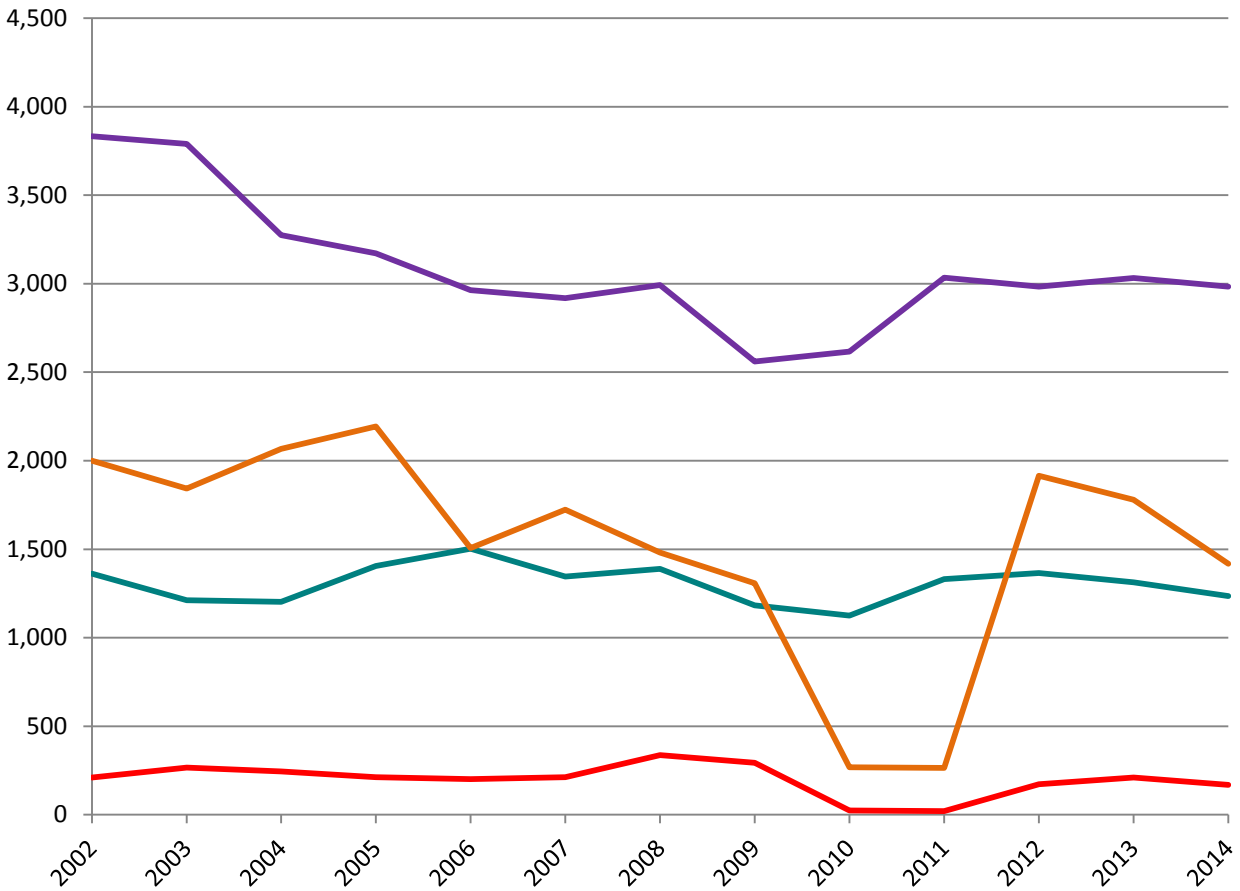


Year	Manufacturing	Moving, storing goods & materials; construction	Information, technology & magement	Business Support Services
2002	842	292	3	0
2003	799	344	11	0
2004	726	241	11	0
2005	721	258	20	0
2006	714	248	15	1
2007	569	263	16	0
2008	566	324	20	0
2009	538	316	19	0
2010	496	336	7	0
2011	485	315	19	2
2012	308	314	4	0
2013	294	261	13	0
2014	317	224	20	1

- Manufacturing
- Moving & Storing of Goods & Materials and Construction
- Information, Technology and Management
- Business to Business

Northwest Industrial Corridor

Core Jobs – 2002-2014

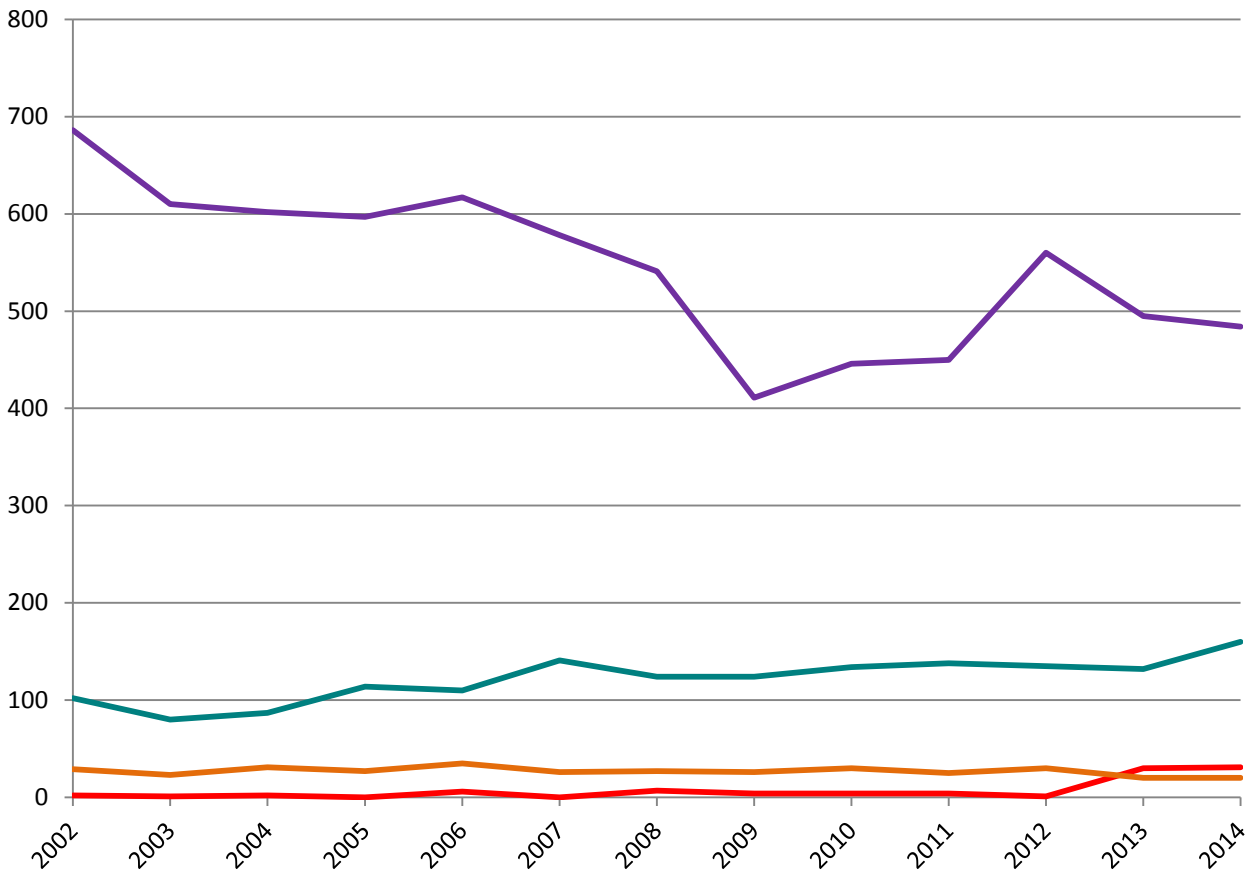


Year	Manufacturing	Moving, storing goods & materials; construction	Information, technology & mangement	Business Support Services
2002	3,833	1,362	210	2,000
2003	3,790	1,212	267	1,842
2004	3,274	1,202	244	2,067
2005	3,171	1,405	212	2,194
2006	2,964	1,503	202	1,507
2007	2,919	1,346	212	1,724
2008	2,992	1,389	337	1,482
2009	2,560	1,183	294	1,308
2010	2,616	1,125	25	268
2011	3,034	1,332	20	265
2012	2,983	1,366	173	1,915
2013	3,032	1,314	211	1,779
2014	2,984	1,235	169	1,418

- Manufacturing
- Moving & Storing of Goods & Materials and Construction
- Information, Technology and Management
- Business to Business

Peterson Industrial Corridor

Core Jobs – 2002-2014

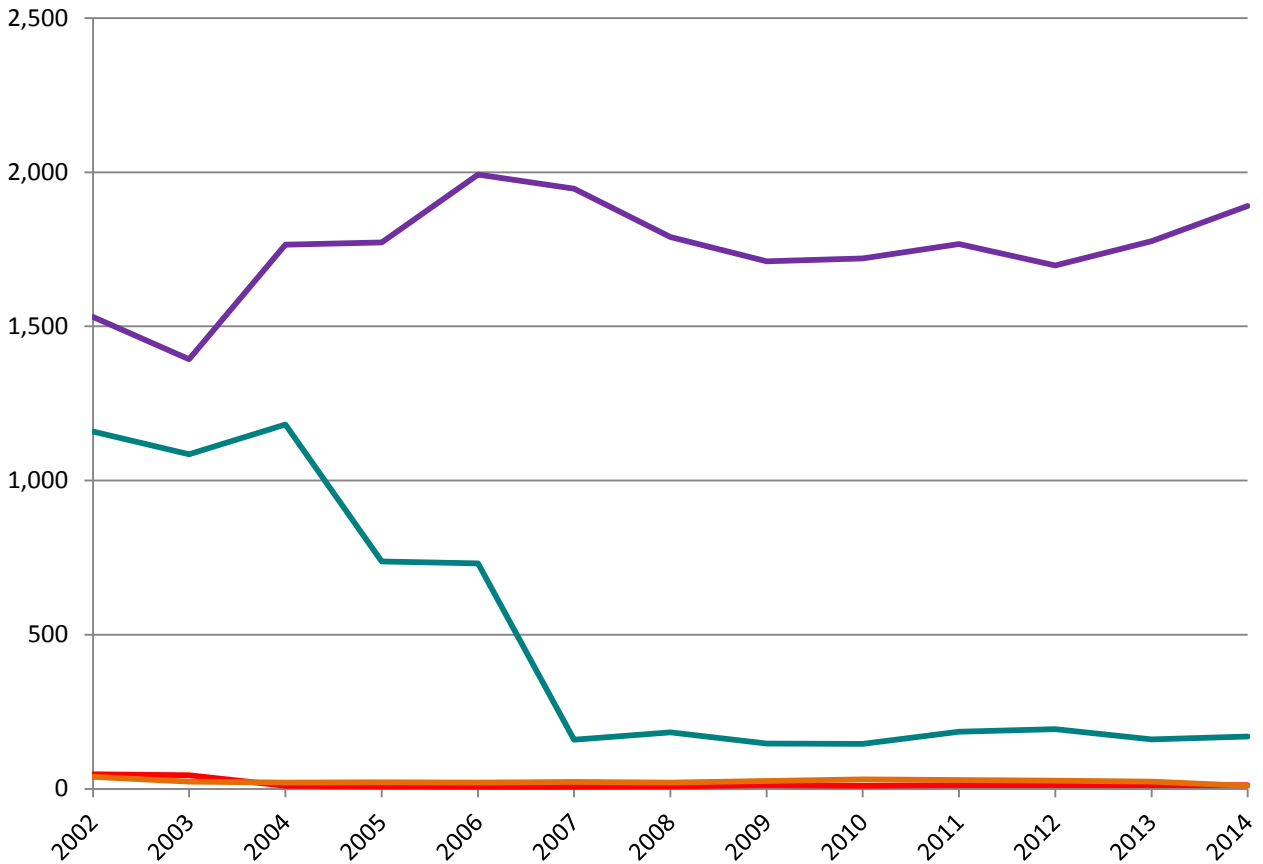


Year	Manufacturing	Moving, storing goods & materials; construction	Information, technology & magement	Business Support Services
2002	686	102	2	29
2003	610	80	1	23
2004	602	87	2	31
2005	597	114	0	27
2006	617	110	6	35
2007	578	141	0	26
2008	541	124	7	27
2009	411	124	4	26
2010	446	134	4	30
2011	450	138	4	25
2012	560	135	1	30
2013	495	132	30	20
2014	484	160	31	20

- Manufacturing
- Moving & Storing of Goods & Materials and Construction
- Information, Technology and Management
- Business to Business

Pulaski Industrial Corridor

Core Jobs – 2002-2014

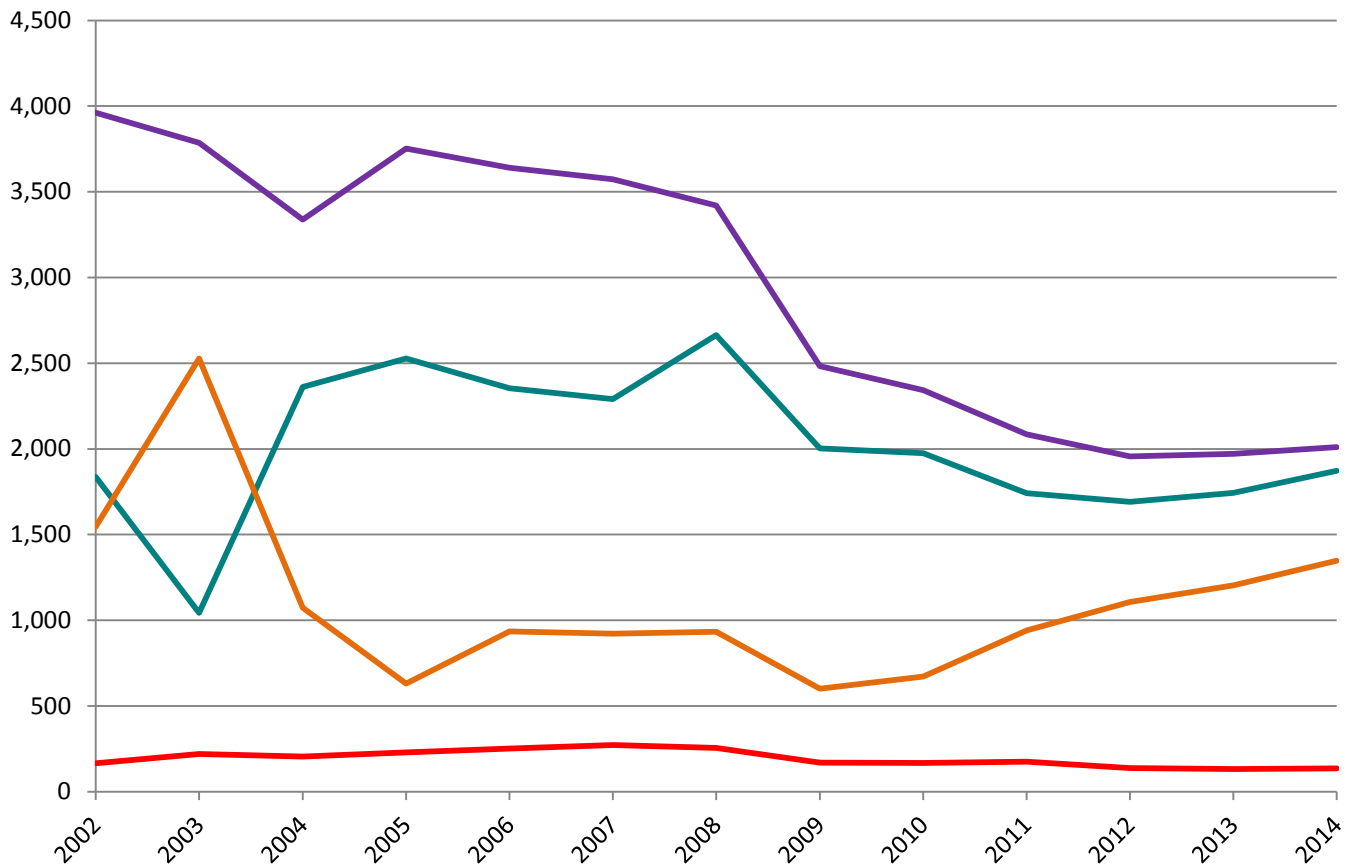


Year	Manufacturing	Moving, storing goods & materials; construction	Information, technology & mangement	Business Support Services
2002	1,531	1,159	48	39
2003	1,394	1,085	44	24
2004	1,765	1,182	10	21
2005	1,772	738	8	22
2006	1,992	731	7	21
2007	1,947	160	7	23
2008	1,790	184	8	21
2009	1,711	147	12	26
2010	1,720	146	10	31
2011	1,767	186	12	29
2012	1,698	194	12	27
2013	1,776	161	12	24
2014	1,891	170	12	10

- Manufacturing
- Moving & Storing of Goods & Materials and Construction
- Information, Technology and Management
- Business to Business

Roosevelt/Cicero Industrial Corridor

Core Jobs – 2002-2014

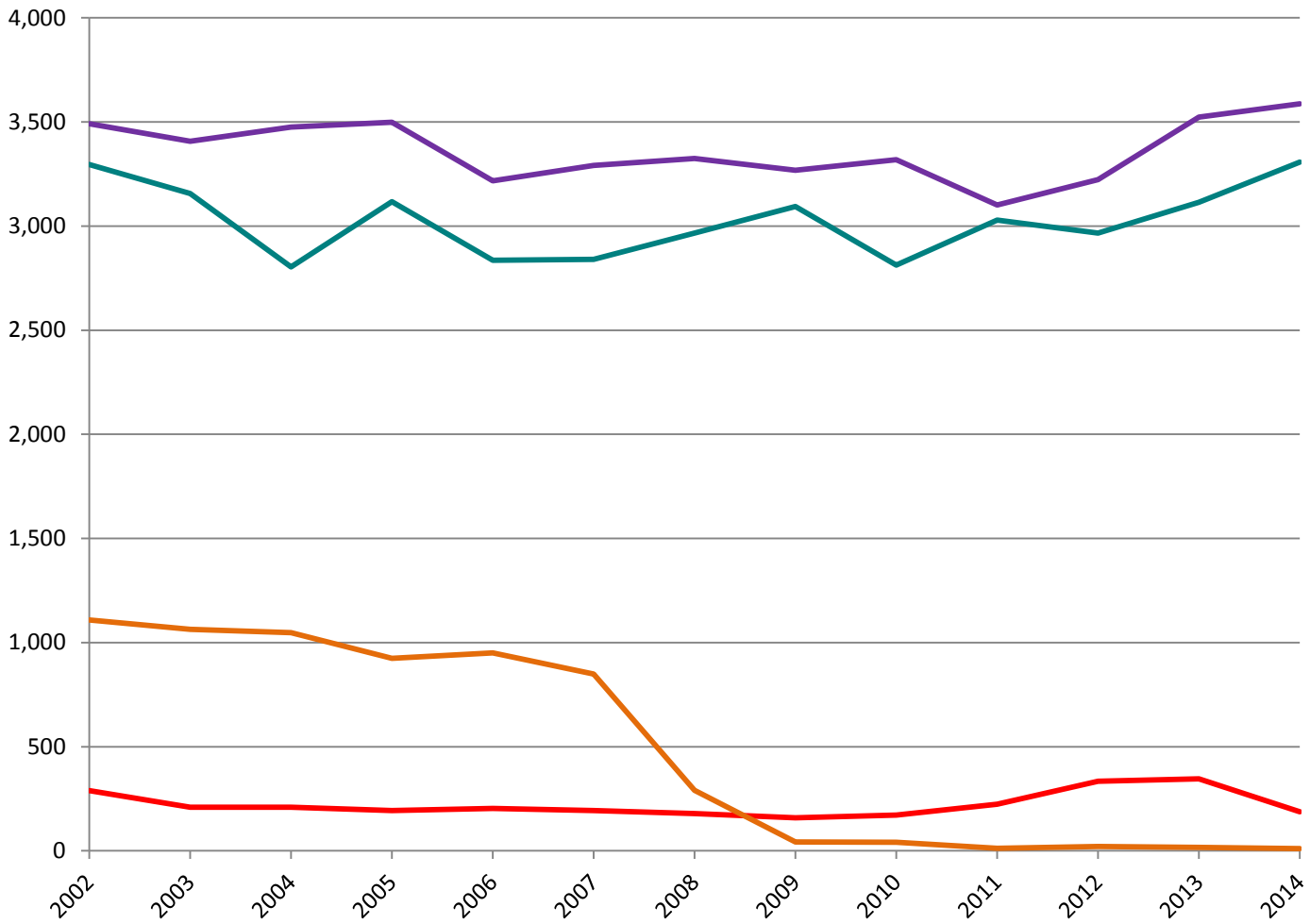


Year	Manufacturing	Moving, storing goods & materials; construction	Information, technology & magement	Business Support Services
2002	3,962	1,836	165	1,546
2003	3,786	1,043	220	2,528
2004	3,338	2,361	205	1,073
2005	3,752	2,527	229	630
2006	3,641	2,354	252	935
2007	3,573	2,290	272	922
2008	3,420	2,664	256	934
2009	2,483	2,003	169	601
2010	2,343	1,975	167	672
2011	2,086	1,741	175	940
2012	1,957	1,692	138	1,107
2013	1,972	1,743	132	1,203
2014	2,010	1,873	135	1,347

- Manufacturing
- Moving & Storing of Goods & Materials and Construction
- Information, Technology and Management
- Business to Business

Stevenson Industrial Corridor

Core Jobs – 2002-2014

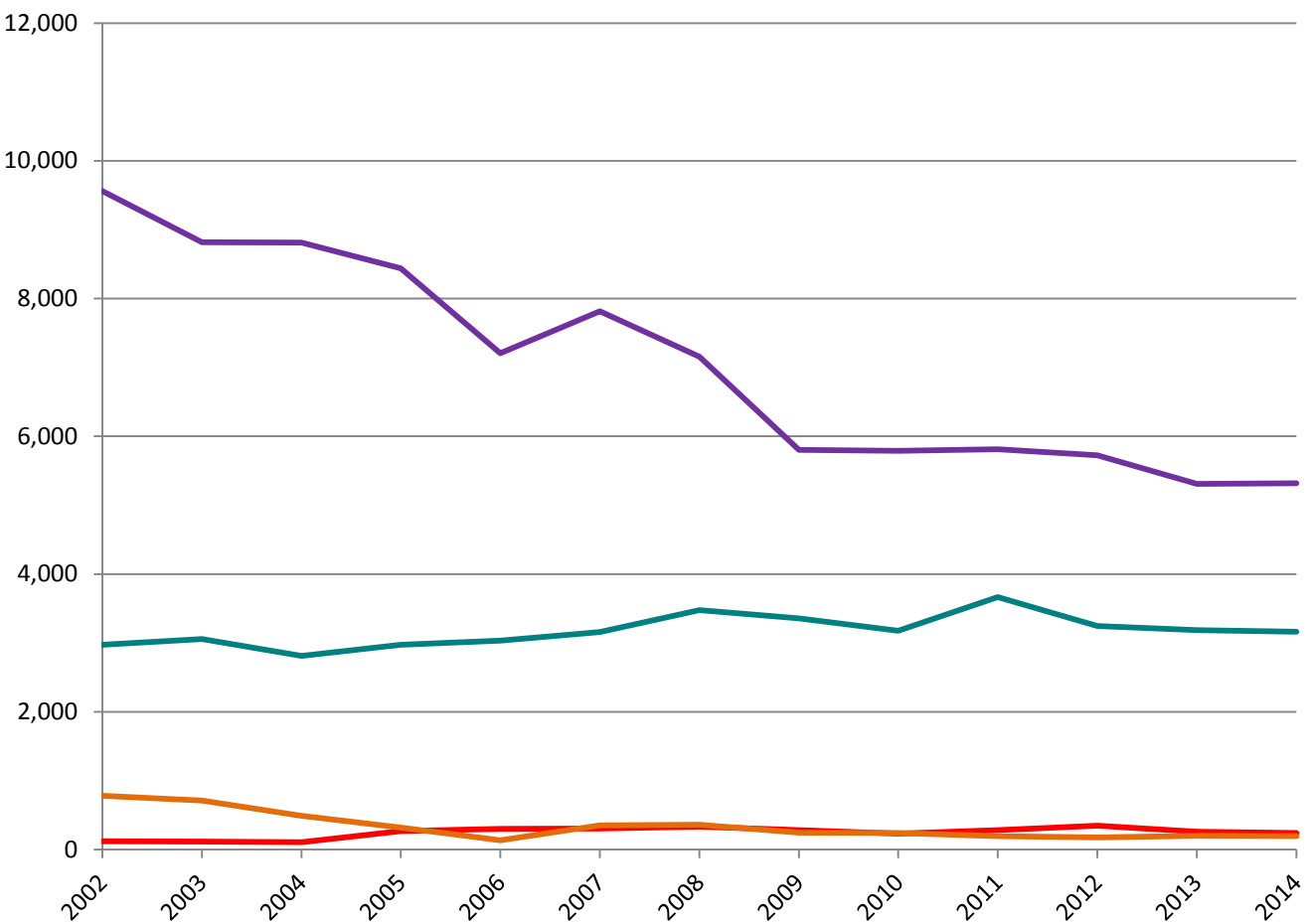


Year	Manufacturing	Moving, storing goods & materials; construction	Information, technology & management	Business Support Services
2002	3,492	3,296	289	1,109
2003	3,407	3,157	209	1,064
2004	3,476	2,804	209	1,048
2005	3,499	3,118	194	925
2006	3,217	2,836	204	950
2007	3,291	2,841	193	849
2008	3,324	2,967	179	290
2009	3,268	3,094	159	43
2010	3,319	2,813	172	41
2011	3,102	3,029	224	12
2012	3,223	2,967	334	20
2013	3,523	3,114	345	16
2014	3,587	3,308	188	10

- Manufacturing
- Moving & Storing of Goods & Materials and Construction
- Information, Technology and Management
- Business to Business

Stockyards Industrial Corridor

Core Jobs – 2002-2014

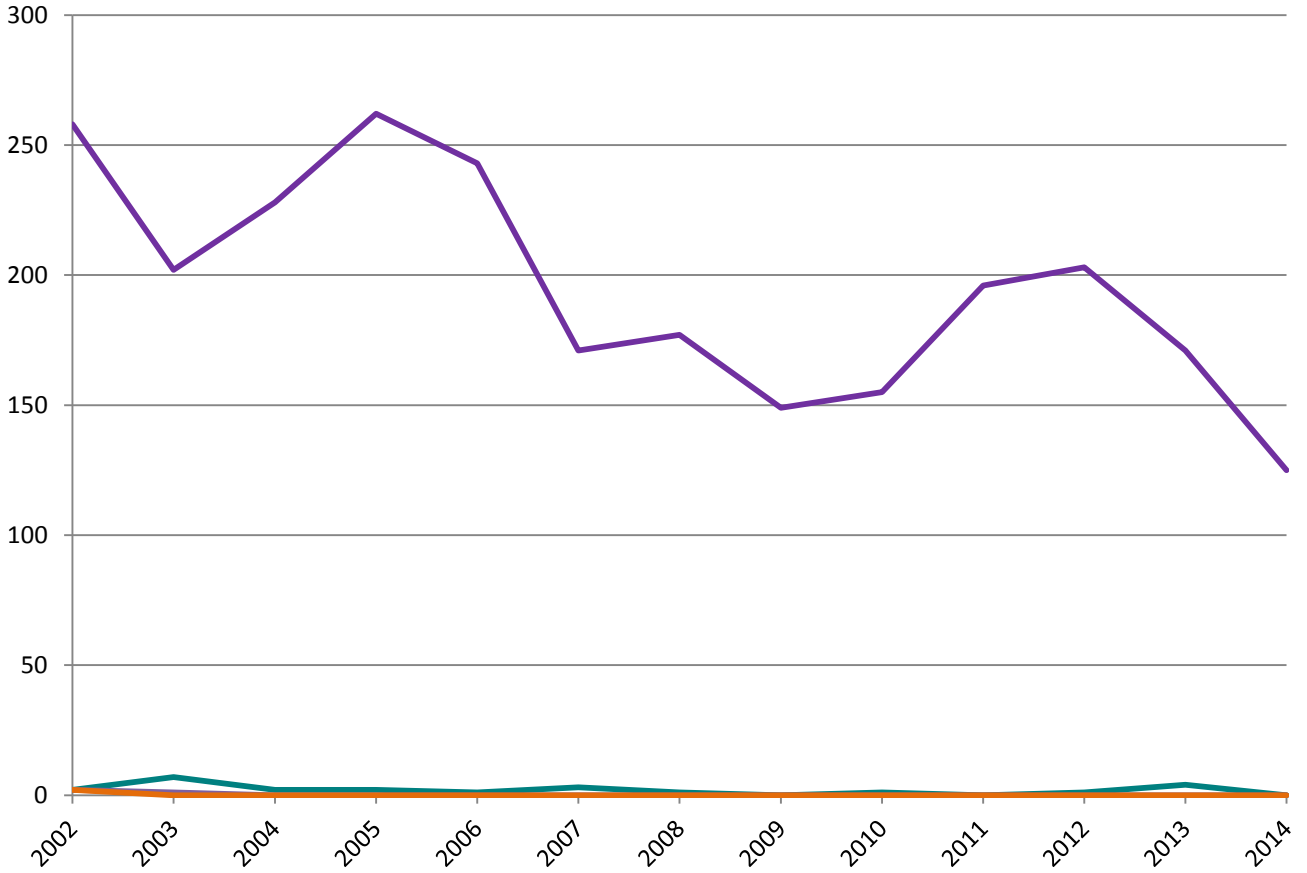


Year	Manufacturing	Moving, storing goods & materials; construction	Information, technology & management	Business Support Services
2002	9,560	2,974	122	779
2003	8,819	3,059	117	713
2004	8,815	2,812	106	488
2005	8,438	2,973	269	319
2006	7,206	3,035	299	135
2007	7,818	3,160	306	352
2008	7,156	3,478	334	363
2009	5,804	3,358	284	245
2010	5,789	3,177	230	239
2011	5,811	3,665	284	196
2012	5,723	3,245	347	174
2013	5,312	3,187	260	201
2014	5,321	3,165	243	193

- Manufacturing
- Moving & Storing of Goods & Materials and Construction
- Information, Technology and Management
- Business to Business

West Pullman Industrial Corridor

Core Jobs – 2002-2014



Year	Manufacturing	Moving, storing goods & materials; construction	Information, technology & mangement	Business Support Services
2002	258	2	2	2
2003	202	7	1	0
2004	228	2	0	0
2005	262	2	0	0
2006	243	1	0	0
2007	171	3	0	0
2008	177	1	0	0
2009	149	0	0	0
2010	155	1	0	0
2011	196	0	0	0
2012	203	1	0	0
2013	171	4	0	0
2014	125	0	0	0

- Manufacturing
- Moving & Storing of Goods & Materials and Construction
- Information, Technology and Management
- Business to Business