

# WELCOME

# We Will Team

*we will begin shortly*



*closed captioning is available*



# TECH TROUBLESHOOTING & ZOOM ETIQUETTE

## IF YOU'RE HAVING TROUBLE:

- Send a message to Lilliane Webb via chat
- Email Briana at [wewill@ruddresources.net](mailto:wewill@ruddresources.net) with the Subject Email: Zoom Troubleshooting
- If you experience lagging or skipping, use your computer to access video, while simultaneously dialing in by phone for the audio

---

## ZOOM ETIQUETTE

- **RENAME YOURSELF:**  
Right click on your face and rename yourself with your first and last name, the organization you represent (if applicable), and pronouns
- **USE YOUR VIDEO:**  
We want to see your beautiful faces! And notice if you're yawning
- **MUTE YOUR MICROPHONE:**  
To reduce background noise, make sure you're muted when you're not speaking
- **LIMIT DISTRACTIONS & AVOID MULTI-TASKING:**  
Turn off notifications, close or minimize apps, and mute your smartphone

---

# WAIVER + ICEBREAKER

*Use the Zoom Chat to tell us about  
your favorite “hidden gem” in Chicago*

---

# ★ TOOLS WE WILL BE USING TODAY

## ZOOM CHAT:

- Found at the bottom of your Zoom window, or press Alt + H. Use to share links, ask a question, add a comment, or request troubleshooting help.

## RAISE HAND:

- If you have a question throughout the presentation that can't be answered via Chat, use Zoom's Raise Hand feature at the bottom of the Participant window.

## BREAKOUT ROOMS:

- We will breakout twice throughout the meeting into our individual pillar groups. You will see a notification that says "Join Breakout Room"



---

# OVERVIEW OF PLANNING PROCESS

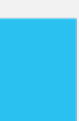
---

# ★ WHY PLAN?

## THE VALUE OF GOOD

## PLANNING





# IMPORTANCE OF CREATING A CITYWIDE PLAN

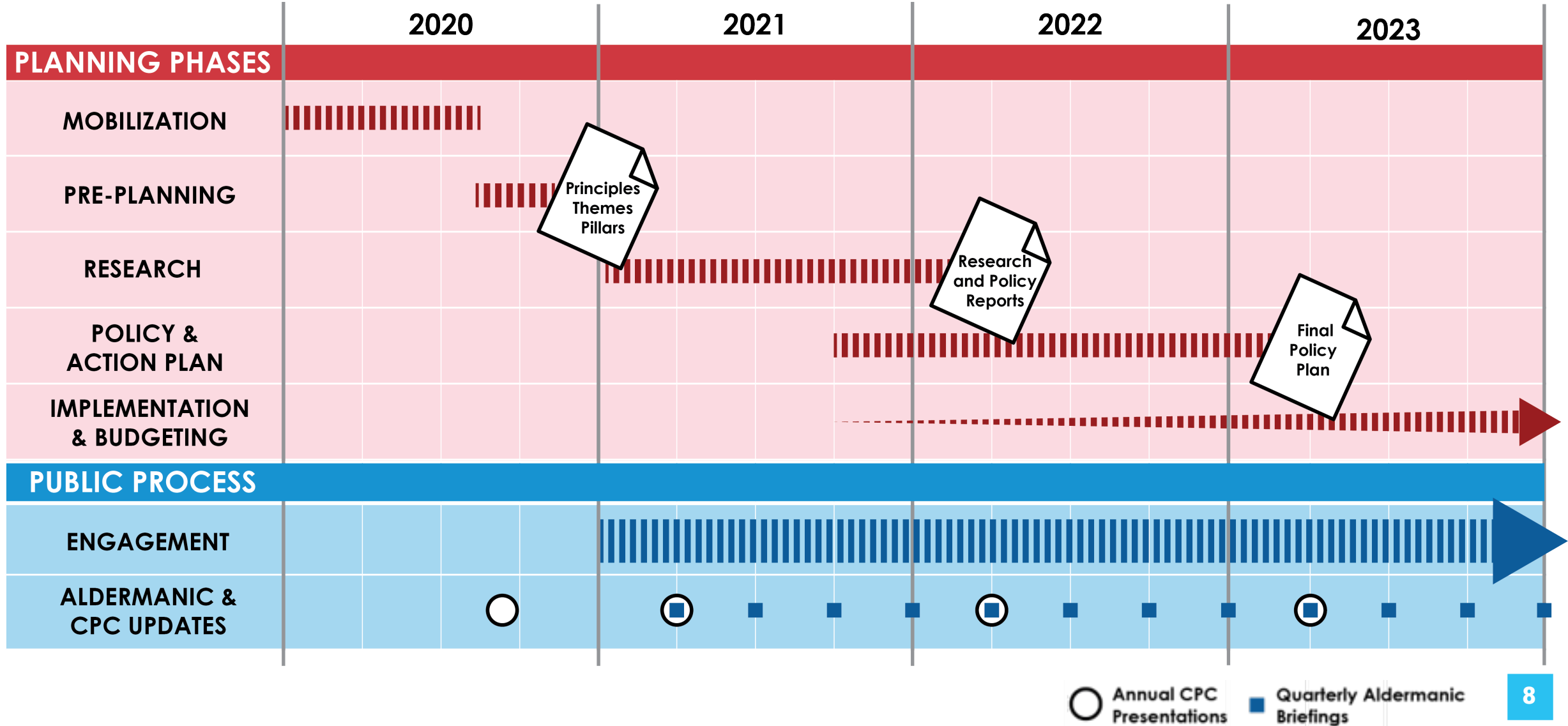


---

## STRATEGIC INVESTMENTS



# WHERE ARE WE IN THE PLANNING PROCESS







## WHAT WE'VE LEARNED

2

### PRINCIPLES

The north star of the plan

5

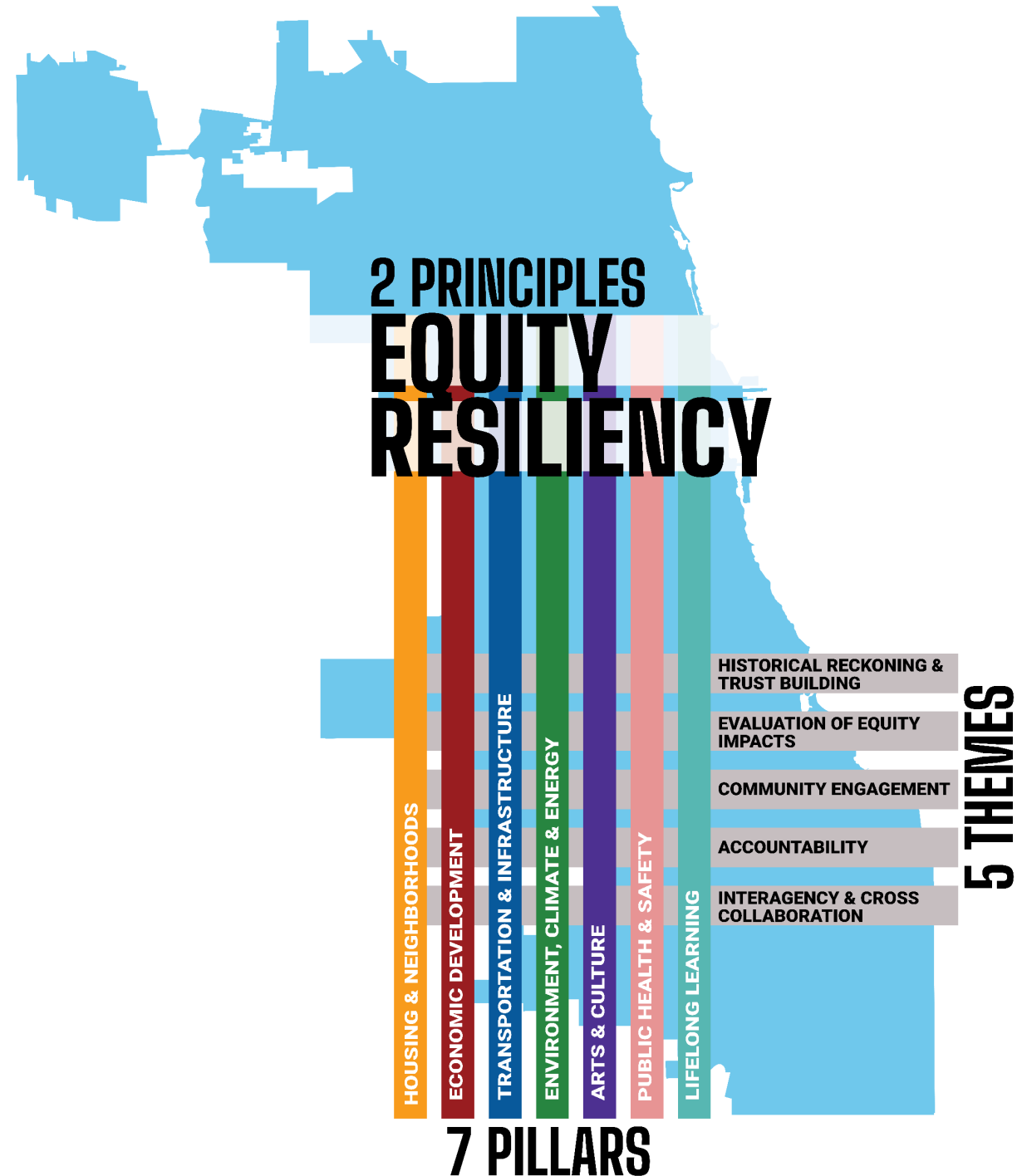
### THEMES

A roadmap for our process

7

### PILLARS

Key quality of life drivers to be addressed



# 5 THEMES OF WE WILL CHICAGO



HISTORICAL RECKONING & TRUST BUILDING



SYSTEMATIC EVALUATION OF EQUITY IMPACTS



ACCESSIBLE & MEANINGFUL COMMUNITY ENGAGEMENT



ACCOUNTABILITY THROUGH SHARED METRICS & TRANSPARENCY



SUSTAINED INTERAGENCY & CROSS COLLABORATION



# ★ 7 PILLARS



**ARTS &  
CULTURE**



**ECONOMIC  
DEVELOPMENT**



**ENVIRONMENT,  
CLIMATE & ENERGY**



**HOUSING &  
NEIGHBORHOODS**



**LIFELONG  
LEARNING**



**PUBLIC HEALTH  
& SAFETY**



**TRANSPORTATION &  
INFRASTRUCTURE**

ADVISORY COMMITTEE

PILLAR RESEARCH TEAMS

HOUSING  
&  
NEIGHBORHOODS

ECONOMIC  
DEVELOPMENT

TRANSPORTATION  
&  
INFRASTRUCTURE

ENVIRONMENT,  
CLIMATE &  
ENERGY

ARTS  
&  
CULTURE

PUBLIC  
HEALTH &  
SAFETY

LIFELONG  
LEARNING

EACH TEAM IS  
COMPRISED OF:

Volunteers • Community Partners • Co-Chairs • City & Sister Agencies

EACH TEAM IS  
SUPPORTED BY:

Research Lead • Facilitation Lead • Documenter • Artist-Organizer Team





# ROLES: PROJECT MANAGEMENT

## CITY OF CHICAGO

Department of Planning  
and Development (DPD)

Mayor's Office

Department of Cultural  
Affairs and Special  
Events (DCASE)

Interagency  
Committee

## FACILITATION

Muse  
Community + Design

Rudd  
Resources

All Together

LaVant  
Consulting

## RESEARCH

SB Friedman  
Development Advisors

Ginkgo Planning  
& Design

Lamar Johnson  
Collaborative (LJC)

Blue Daring

Health & Medicine Policy  
Research Group (HMPRG)

Chico Consulting Group

Office of Modern  
Composition (OMC)

City Bureau

Cortico

## ARTISTS

### Honey Pot Performance

Parrish Brown

Michelle E.L. Merritt

Yaritza Guillen

Jordan Evangelista

Dorain Sylvain

Aaliyah Christina

Alexandria Willis

Gloria Rivera

Vanessa Stokes

Reesie Davis

Cat Mahari

Pearl Ramsay

Jacob Watson

Quenna Barrett

# PUBLIC ENGAGEMENT CHANNELS



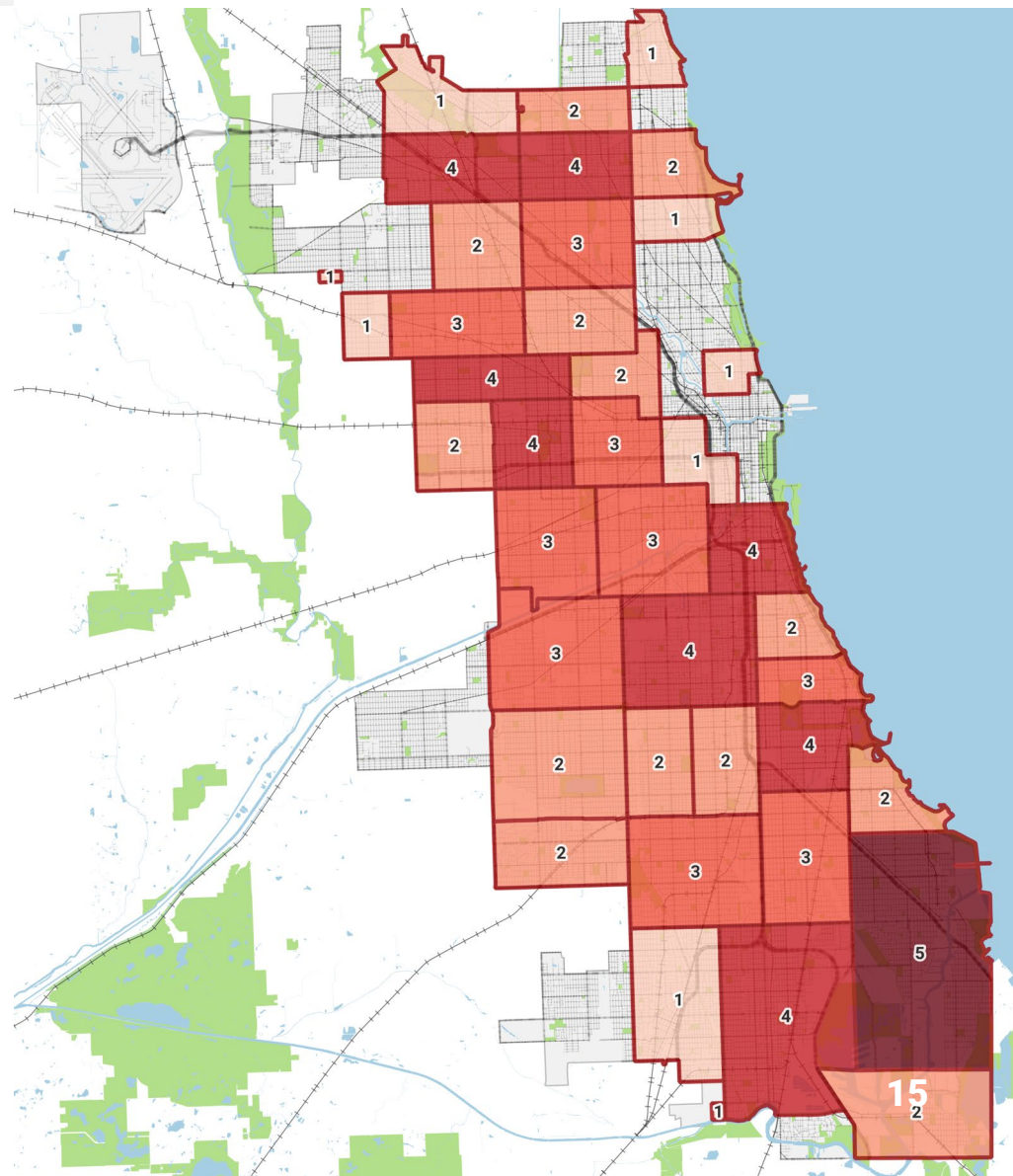


# SELECTED COMMUNITY PARTNERS + ARTISTS

- **25 Community Partners** (178 Applicants)  
*15 City Stipends*  
*10 Chicago Community Trust Stipends*
- **7 Artist – Organizer Pairs** (One per pillar)

## COMMUNITY PARTNER / ARTIST-ORGANIZER PAIR AREA

*Self report by zip code + Community Areas*  
*8 Community Partners reported "Citywide" Service Areas*







# SELECTED VOLUNTEERS (Research Teams + Advisory)

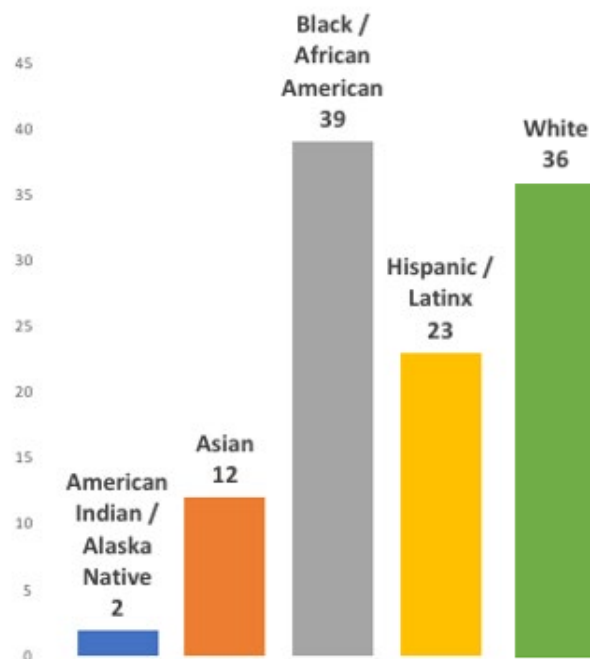
## VOLUNTEER LOCATION

Self report by zip code

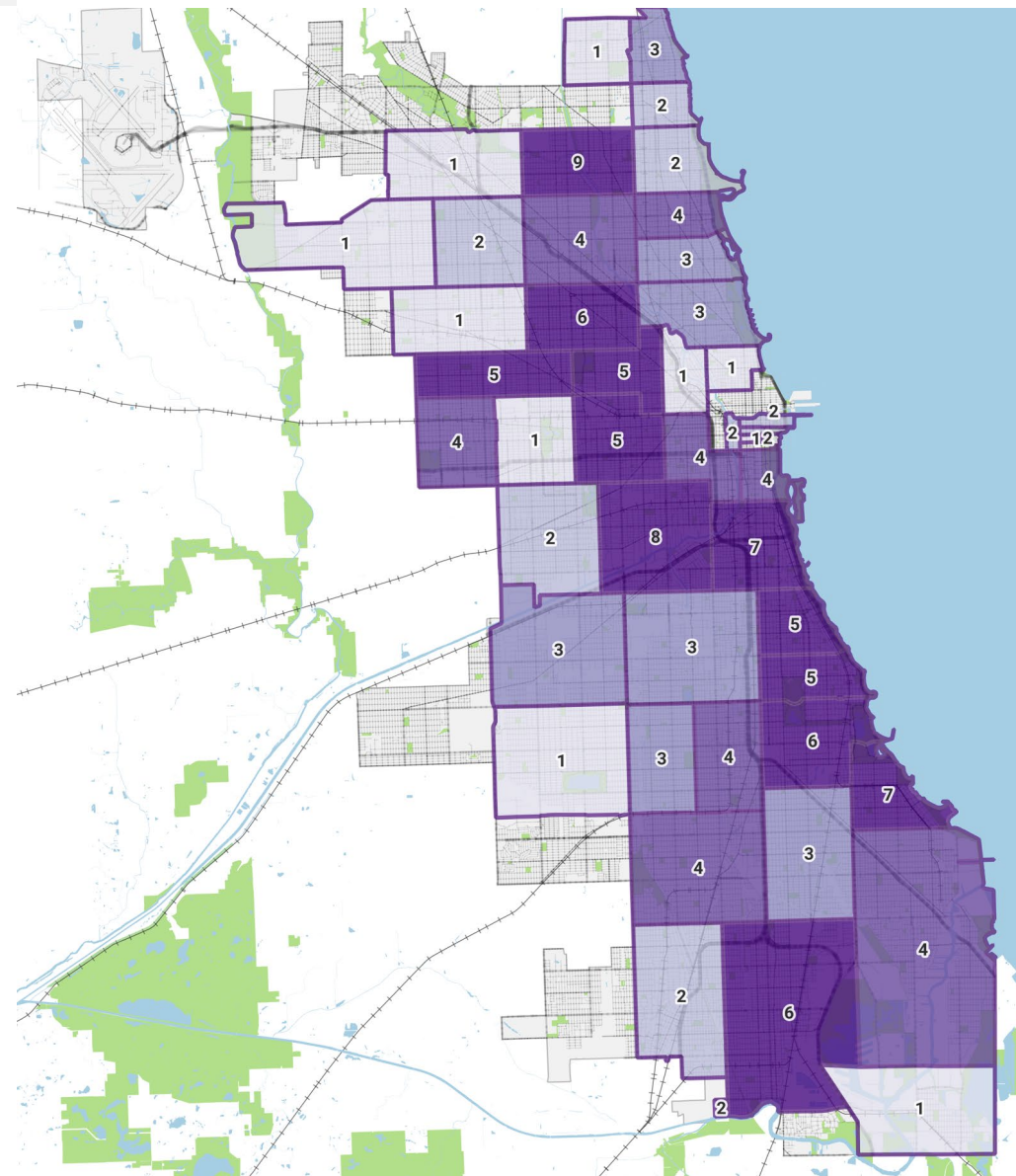
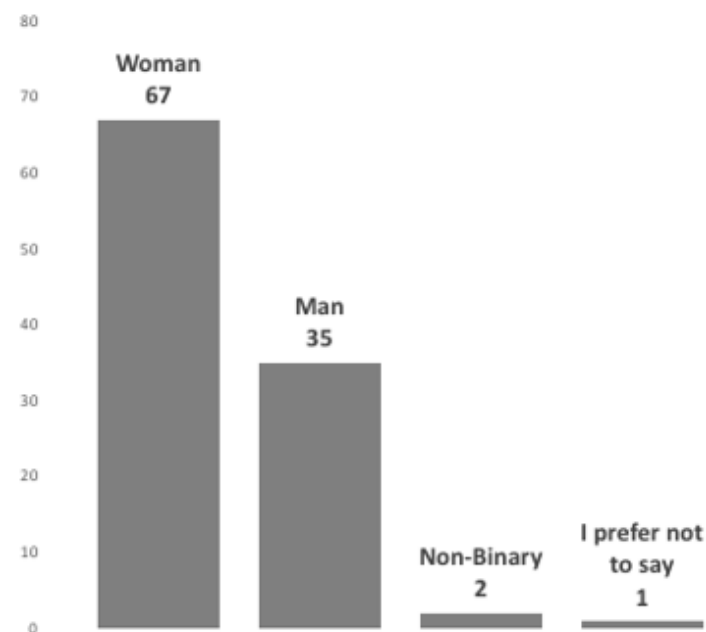
5 volunteers reported "Citywide" Service Areas

- 115 Volunteers (323 Applicants)

### VOLUNTEER ETHNICITY / RACE



### VOLUNTEER GENDER







# PAST PLANS IN CHICAGO: EXAMPLES

- 1 Calumet Area Land Use Plan 2004
- 2 Calumet Design Guidelines 2004
- 3 Calumet Open Space Reserve Plan 2005
- 4 Chatham Commercial Design Guidelines
- 5 Chicago Area Action Plan 2009
- 6 Chicago Central Area Plan 2003
- 7 Chicago Lakeside Master Plan 2015
- 8 Chicago River Design Guidelines 2019
- 9 Chicago Riverwalk Main Branch Framework Plan 2009
- 10 City of Chicago & Metra Station Typology Study
- 11 Corridors of Industrial Opportunity: A Plan for Industry in Chicago (DRAFT) 2014
- 12 Fulton Market Innovation District 2014
- 13 Great Rivers Chicago - A Vision for the Chicago, Calumet, and Des Plaines Rivers 2016
- 14 Green Healthy Neighborhoods 2014
- 15 Halsted Triangle Plan 2010
- 16 Jefferson Park Station Area Master Plan 2018
- 17 Kinzie Industrial Corridor Framework Plan 2019
- 18 Logan Square Open Space Plan 2004
- 19 METRA Milwaukee West Line TFD Plan 2011
- 20 Milwaukee/Lawrence Corridor Study 2008
- 21 Near Northwest Side Plan 2002
- 22 Near South Community Plan 2003
- 23 Near West Side Plan 2000
- 24 North Branch Industrial Corridor Framework Plan 2017
- 25 North Milwaukee Avenue Corridor Plan 2008
- 26 North Park Commercial Corridors Study
- 27 Ravenswood Industrial Corridor Framework Plan 2019
- 28 Reconnecting Neighborhoods -Mid South Area 2009
- 29 Reconnecting Neighborhoods -Near North Area 2009
- 30 Reconnecting Neighborhoods -Near West Area 2009
- 31 Red and Purple Modernization (RPM) Phase One Project TIF 2016
- 32 Six Corners Economic Development Plan 2013
- 33 South Cottage Grove Assessment Plan Pershing Rd to 51st St 2003
- 34 South Lakefront Corridor Transit Study 2011
- 35 State Wabash & Michigan Plan 2000
- 36 The Lakefront Plan of Chicago 1973
- 37 Transit Friendly Development Guide 2009
- 38 West Loop Design Guidelines 2017

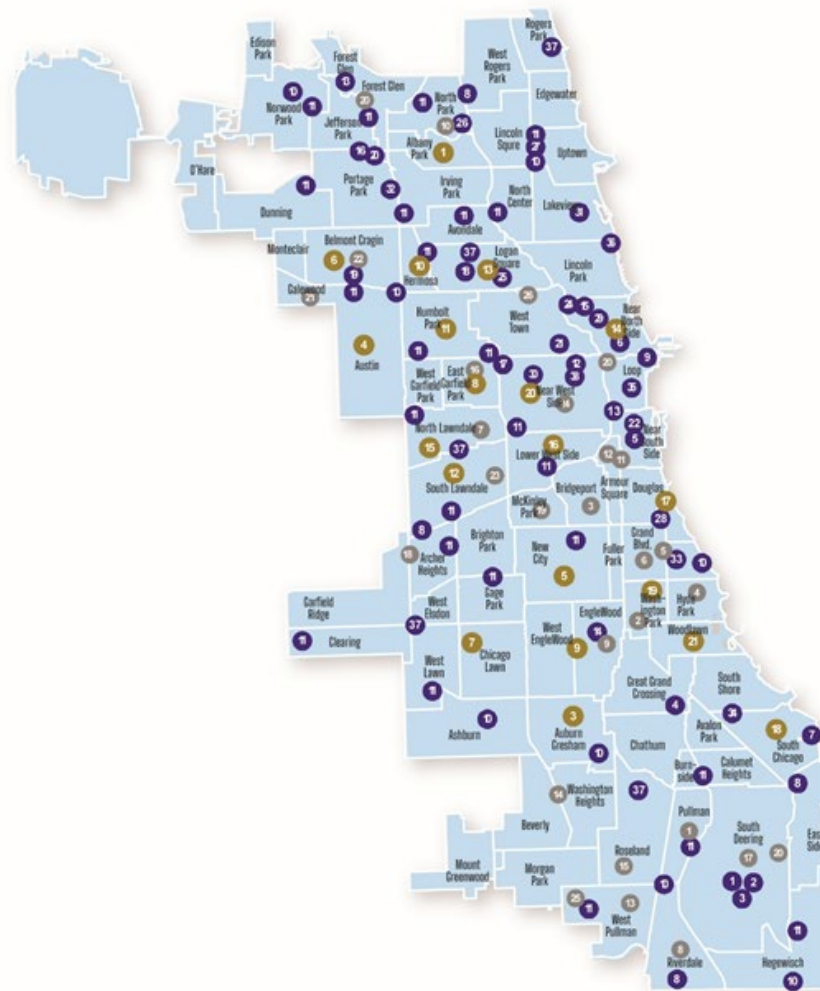
Planning Regions

## LISC Plans

- 1 Albany Park 2014
- 2 Auburn Gresham 2005
- 3 Auburn Gresham 2018
- 4 Austin 2018
- 5 Back of the Yards 2014
- 6 Belmont Cragin 2018
- 7 Chicago Southwest 2018
- 8 East Garfield Park 2005
- 9 Englewood/West Englewood 2018
- 10 Hermosa/Logan Square West 2018
- 11 Humboldt Park 2005
- 12 Little Village (South Lawndale) 2005
- 13 Logan Square 2005
- 14 Near North 2015
- 15 North Lawndale 2018
- 16 Pilsen (Lower West Side) 2005
- 17 Quad Communities 2005
- 18 South Chicago 2007
- 19 Washington Park 2009
- 20 West Haven 2007
- 21 Woodlawn 2005

## CMAQ LTA Projects

- 1 A Transportation Access Plan for Pullman National Monument
- 2 Black Metropolis National Heritage Area Feasibility Study
- 3 Bridgeport/Canaryville Planning Priorities Report
- 4 Bronzeville Food Access Study
- 5 Bronzeville Retail Land Use Plan
- 6 Bronzeville Retail Strategic Plan
- 7 Chicago - North Lawndale Community Comprehensive Plan
- 8 Chicago - Riverdale Community Area Transportation Plan
- 9 Chicago Green Healthy Neighborhoods Plan
- 10 Chicago North River Communities Plan
- 11 Chinatown Parking Study
- 12 Chinatown Plan
- 13 CTA Red Line South Extension Report
- 14 Endeavor Institute 95th Street Planning Priorities Report
- 15 Far South Community Existing Conditions Report and Market Analysis
- 16 Garfield Park Corridor Study
- 17 Illinois International Port District Planning Priorities Report
- 18 LeClair Courts Transportation And Access Study
- 19 McKinley Park Neighborhood Plan
- 20 Metropolitan Planning Council Great Rivers Chicago
- 21 North Ave Corridor Plan
- 22 Northwest Side Belmont Cragin Business and Economic Development Plan
- 23 Pilsen/Little Village Neighborhood Plan
- 24 UIC Multimodal Transportation Plan
- 25 West Pullman Neighborhood Plan
- 26 Wicker Park Bucktown Parking Solutions Study



# PARALLEL INITIATIVES





# TIMELINE

| JULY   | AUGUST        | SEPTEMBER                      | OCTOBER  | NOVEMBER                      | DECEMBER  | JANUARY                      | FEBRUARY                             | MARCH                        |
|--|---------------|--------------------------------|--|-------------------------------|---|------------------------------|--------------------------------------|------------------------------|
| STEP 1: SETTING THE STAGE<br>Goal: Guiding Questions |               |                                | STEP 2: DEVELOP A POLICY TOOLKIT<br>Goal: Objectives |                               | STEP 3: SET POLICY FRAMEWORK<br>Goal: Recommendations |                              |                                      |                              |
| RESEARCH MTGS  | RESEARCH MTGS | RESEARCH MTGS<br>RESEARCH MTGS | RESEARCH MTGS  | RESEARCH MTGS                 | RESEARCH MTGS   | RESEARCH MTGS                | RESEARCH MTGS                        |                              |
| ADVISORY<br>COMMITTEE MTG                            |               | ADVISORY<br>COMMITTEE MTG      | ADVISORY<br>COMMITTEE MTG                            | ADVISORY<br>COMMITTEE MTG     | ADVISORY<br>COMMITTEE MTG                             | ADVISORY<br>COMMITTEE MTG    | ADVISORY<br>COMMITTEE MTG            | ADVISORY<br>COMMITTEE MTG    |
|  |               | INTERAGENCY<br>COMMITTEE MTG   |  | INTERAGENCY COM<br>MITTEE MTG |   | INTERAGENCY<br>COMMITTEE MTG |                                      | INTERAGENCY<br>COMMITTEE MTG |
| ARTIST-ORGANIZER PROGRAMMING                         |               |                                |  |                               |   |                              |                                      |                              |
| COMMUNITY PARTNER ENGAGEMENT PROCESS                 |               |                                |  |                               |   |                              |                                      |                              |
|  |               | PIO MTG                        |  |                               | PIO MTG / PLAN<br>COMMISSION MTG                      |                              |                                      |                              |
|  |               |                                |  |                               |   |                              | DRAFT & FINALIZE<br>RESEARCH REPORTS |                              |

# PILLAR MEETING PROCESS



ARTS &  
CULTURE



ECONOMIC  
DEVELOPMENT



ENVIRONMENT,  
CLIMATE & ENERGY



HOUSING &  
NEIGHBORHOODS



LIFELONG  
LEARNING



PUBLIC HEALTH  
& SAFETY



TRANSPORTATION &  
INFRASTRUCTURE

## STEP 1: SET THE STAGE

Goal: Guiding Questions

**Meetings 1-3**

**Build on Phase I & Historical Reckoning to Identify Guiding Questions**

- Connect to past plans
- Embed reckoning, equity, and resiliency
- Identify guiding questions that will serve as framework for process

## STEP 2: DEVELOP A POLICY TOOLKIT

Goal: Objectives

**Meetings 4-6**

**Identify Objectives and Initial Policy Recommendations**

- Assess trends & assets
- Explore best practices
- Define goals
- Explore cross-cutting themes
- Incorporate input from Artist/Organizer teams

## STEP 3: SET POLICY FRAMEWORK

Goal: Recommendations

**Meetings 7-9**

**Develop Final Policy Framework**

- Outline policy recommendations
- Highlight potential partners, resources and metrics
- Synthesize cross-cutting themes



---

# BREAKOUT 1

---



---

# HISTORICAL RECKONING & PAST PLANNING EFFORTS

---



# HISTORICAL RECKONING

- **Reflect on our Past**  
What can we learn from our collective history?
- **Reclaim our Present**  
How are we seeking to heal from moments of historical reckoning?
- **Reimagine our Future**  
What do we want our city to look like?



# ★ CHICAGO'S PLANNING HISTORY

## FIRST, WE MUST REVISIT OUR HISTORY: 1909 PLAN OF CHICAGO

### 1909 PLAN OF CHICAGO

- Legacy - 24 miles of public lakefront





# ★ CHICAGO'S PLANNING HISTORY

## PRE 1950 TO 1956: URBAN RENEWAL

### INTENT

- Address declining office development and white flight by rebuilding downtown
- Expansion of UIC Campus
- Construction of a major highway network

### IMPACT

- Emergence of urban renewal on the south side that cleared 101 acres
- Widespread removal of immigrant communities from near west side
- Public housing selected for slum clearance



# ★ CHICAGO'S PLANNING HISTORY

## LATE 1950S TO EARLY 1960S: PRIVATE ACTORS + DOWNTOWN

### INTENT

- Continued focus on redeveloping downtown and growth in central area
- Floor Area Ratio (FAR) and a planned unit development process to help downtown-focused initiatives

### IMPACT

- Developers and private actors played a significant role in planning and policy
- Pocket clearances in communities to make room downtown for middle-class families
- Mixed-use development within the old railroad yards and along the Chicago River
- Significant office development within the Loop



# ★ CHICAGO'S PLANNING HISTORY

## 1964 TO 1966: THE COMPREHENSIVE PLAN OF CHICAGO

### INTENT

- Continued focus on redeveloping downtown and growth in central area
- Floor Area Ratio (FAR) and a planned unit development process to help downtown-focused initiatives

### IMPACT

- Developers and private actors played a significant role in planning and policy
- Pocket clearances in communities to make room downtown for middle-class families
- Mixed-use development within the old railroad yards and along the Chicago River
- Significant office development within the Loop



### The Comprehensive Plan of CHICAGO

Summary Report

# ★ CHICAGO'S PLANNING HISTORY

## 1970S: REGULATORY PLANNING

### INTENT

- Focus shifts to site-specific projects as federal dollars dry up
- Regulatory planning to protect natural assets
- Crosstown Expressway proposal

### IMPACT

- Lakefront protection and river viewed as a public space
- Crosstown Expressway cancelled with community frustration over lack of neighborhood-focused planning
- Independent community development organizations formed; shift toward a more bottom-up approach





# ★ CHICAGO'S PLANNING HISTORY

## 1980S TO EARLY 1990S: BROADER FOCUS & BLOCK GRANTS

### INTENT

- Shift to economic/equity-based planning and Chicago Central Area Plan
- Chicago Works Together Plan focuses on Chicago as a whole
- Leveraging downtown development for neighborhood development through linkage fees

### IMPACT

- 1992 World's Fair Plan scrapped due to neighborhood and political opposition
- Community Development Block Grant Reforms shifted from planning to economic development
- Linkage fees blocked with opposition from developers, city officials, and courts



# ★ CHICAGO'S PLANNING HISTORY

## LATE 1990S – 2000S: MIDDLE-RANGE PLANS & NEIGHBORHOOD PLANNING

### INTENT

- Neighborhood & community-focused planning initiatives to gain the trust of community groups
- First rewrite of the Zoning Code since the 1950s with community education

### IMPACT

- Efforts included community input in planning with a structured process, which broadens ownership of plans of this period
- Zoning changes increased density bonuses and revised planned developments process
- Neighborhood plans had mixed implementation results



# ★ CHICAGO'S PLANNING HISTORY

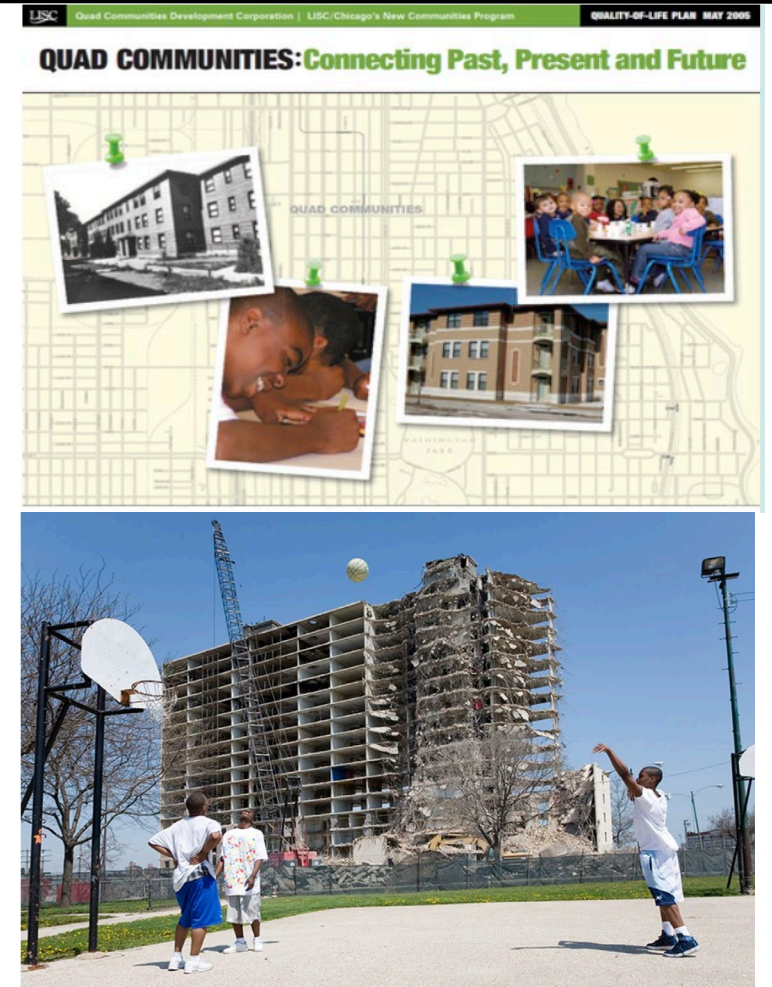
## 2000s-2021: QUALITY OF LIFE PLANNING

### INTENT

- LISC's New Communities Program focuses on building capacity in existing community organizations
- CHA's Plan for Transformation is approved by HUD
- Chicago Metropolis 2020's Chicago Plan for the Twenty-First Century imagines the next century

### IMPACT

- A new era of public housing emerges with demolition, redevelopment, and a focus on mixed-income communities
- Neighborhood plans are largely led by communities and the nonprofit sector
- Questions emerge about balancing downtown development vs. neighborhood development



---

# GROUNDING + DEFINITIONS

---



# ★ GROUNDING + DEFINITIONS

# Healing

**Healing** recognizes the need to acknowledge and tell the truth about past wrongs created by individual and systemic racism and address the present consequences. Before transforming systems and structures, we must first transform ourselves. To heal is to restore to wholeness; to repair damage; and to set right.

[Truth, Racial Healing, and Transformation \[TRHT\]](#)



# ★ GROUNDING + DEFINITIONS

# Resiliency



**Resiliency** is the ability of individuals, institutions, businesses, and systems within the community to survive, adapt, and grow despite the chronic stresses or acute shocks it experiences. A truly resilient city is not only expected to perform well in good times but also recover expediently after challenges.

*Resilient Chicago, 2019*



# ★ GROUNDING + DEFINITIONS



- **Equity** is both an **outcome** and a **process** that results in fair and just access to opportunity and resources that provide everyone the ability to thrive.
- As an **outcome** equity results in fair and just **access to opportunity and resources** that provide everyone the ability to **thrive**. Acknowledging the **present and historical inequality** that persist in our society, equity is a **future state we strive to create** where identity and social status no longer predestine life outcomes.



# ★ GROUNDING + DEFINITIONS



- **Equity** is both an **outcome** and a **process** that results in fair and just access to opportunity and resources that provide everyone the ability to thrive.
- As a **process**, equity requires a new way of doing business: one that (1) **prioritizes** access and opportunities for **groups who have the greatest need**; (2) methodically **evaluates benefits and burdens** produced by seemingly neutral systems and practices; and (3) **engages those most impacted** by the problems we seek to address as experts in their own experiences, strategists in **co-creating solutions**, and evaluators of success.



# ★ GROUNDING + DEFINITIONS



- **Racial equity** focuses on the **social construction** of race and how it has been used (historically and presently) to **unjustly distribute opportunity and resources** based on a person's skin color, heritage, ethnicity, and/or national origin. Advancing racial equity requires an **analysis of systemic racism** inclusive of the ways harm is created at the **individual, interpersonal, institutional, and structural levels**. It also requires a commitment to **dismantling systems** that perpetuate racialized outcomes and **rebuild systems** that produce systemic inclusion.

# **GROUNDING + DEFINITIONS**

## GUIDING PRINCIPLES: HOW DO WE GET THERE?

- **Build a culture of inclusion and diversity.**  
We must unlearn narratives and practices that promote exclusion, division, and oppression. Instead, we must nurture narratives and practices that embrace belonging, mutuality, and unity. We must build the capacity to execute in ways that maximize the wealth of talent and collective genius our city has to offer.
- **Deepen our spectrum of engagement.**  
We must shift power at “decision-making tables” and learn how to co-create solutions with those most impacted by the problems

# **GROUNDING + DEFINITIONS**

## GUIDING PRINCIPLES: HOW DO WE GET THERE?

- **Routinize equity impact analyses in our process and practice.**  
We must interrogate systems that seem neutral for unintended impacts and work to mitigate harmful outputs. We must ensure that the benefits and burdens of the decisions we make flow in a fair and just manner.
- **Invest in our healing.**  
We must acknowledge harms that have been created intentionally and unintentionally, whether by individuals, events, or systems. We must commit to repairing harm where we have agency and authority to create impact. We must learn from our past mistakes and adopt restorative practices and mindsets into our strategies and work environments.
- **Be accountable for equitable progress.**  
We must use data and metrics to have honest and transparent conversations about the impact of our work.



# HOW WE MOVE FORWARD

---

WHAT IS ONE COMMITMENT  
YOU CAN MAKE TO LIVE OUT THE  
EQUITY STATEMENT OF PRINCIPLES?

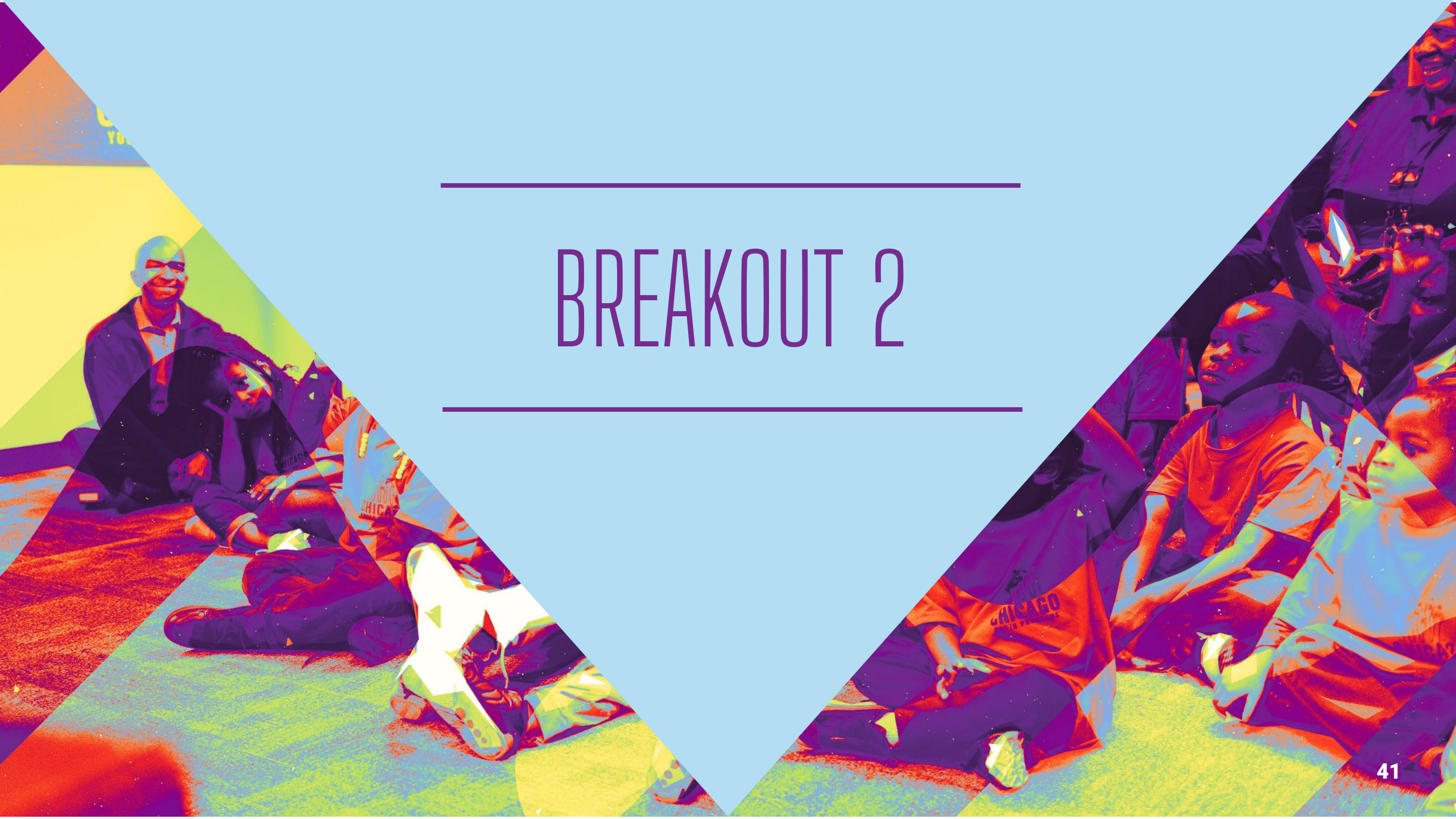
---



---

# BREAKOUT 2

---





# NEXT STEPS

## For Upcoming Pillar Meetings

- Complete survey in follow up emails to let us know how we are doing
- Look for reminder emails from [wewill@ruddresources.net](mailto:wewill@ruddresources.net) one week in advance
- Let us know in advance when you cannot make meetings
- Join early or stay late (up to 30 minutes) to chat informally with your team
- Meeting #2 is week of August 9!
- Preview norms discussion
- Homework: Check out the We Will Chicago website!

Thank you!

