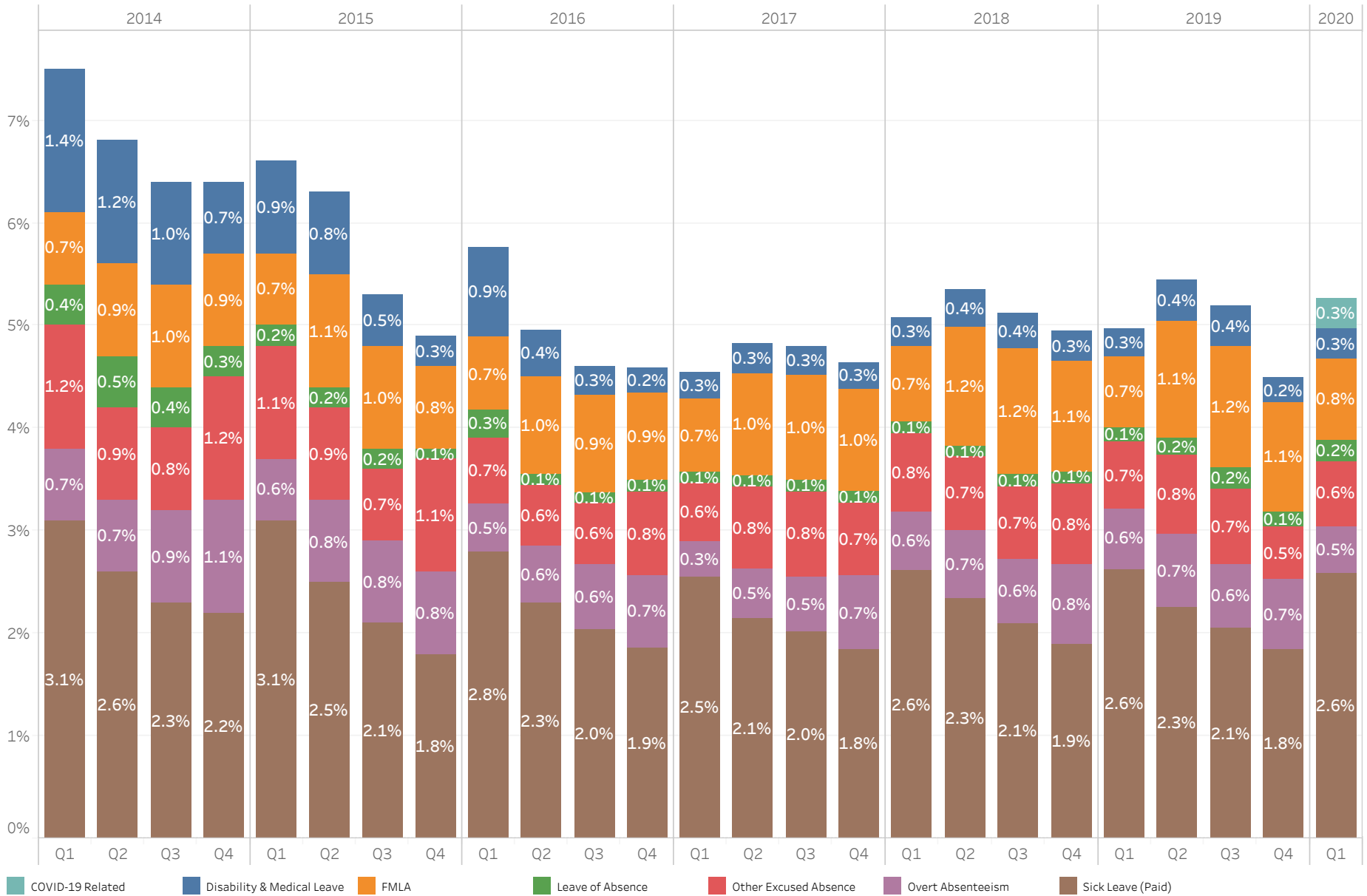


Citywide Quarterly Lost Time Rate

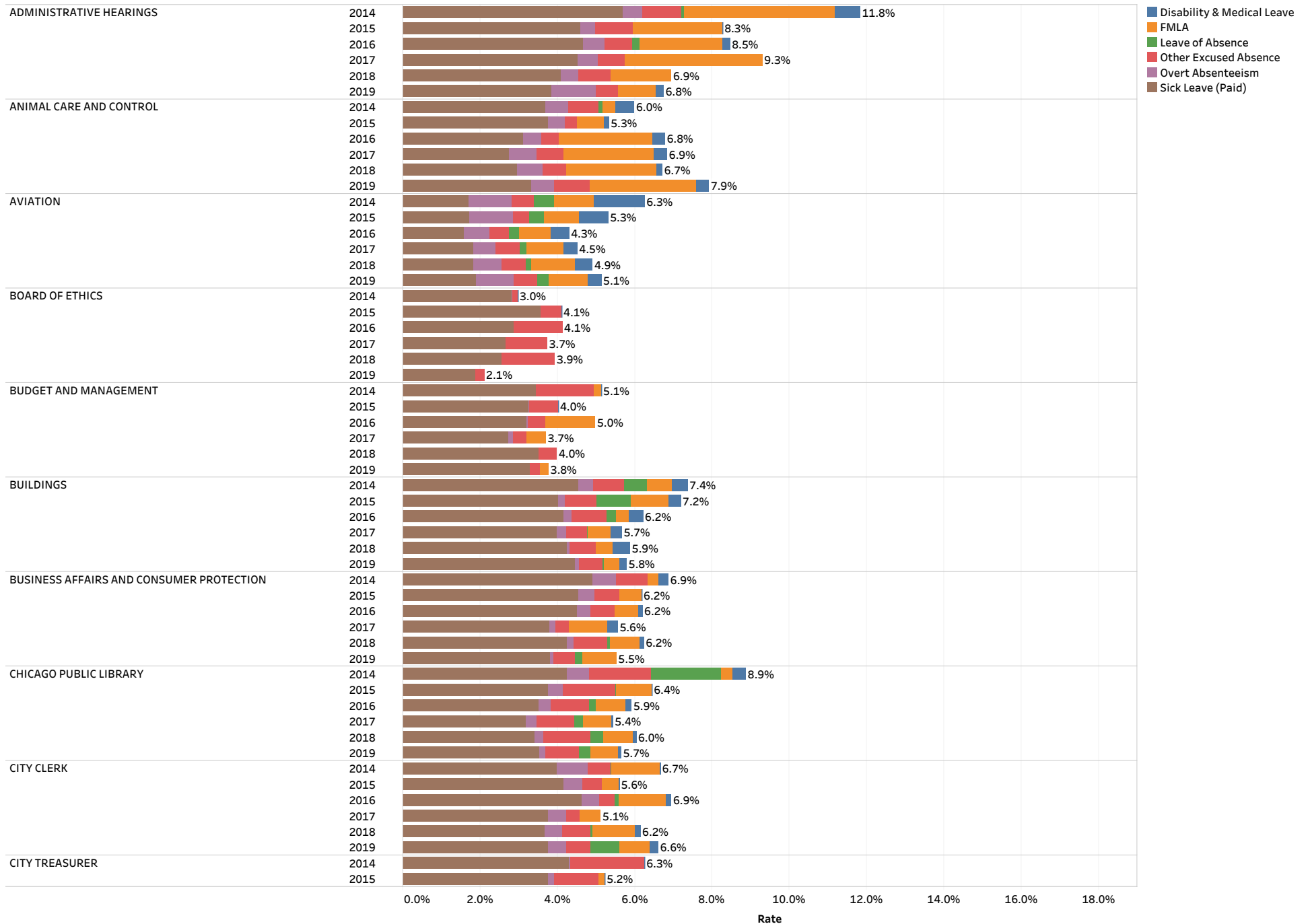


Notes:

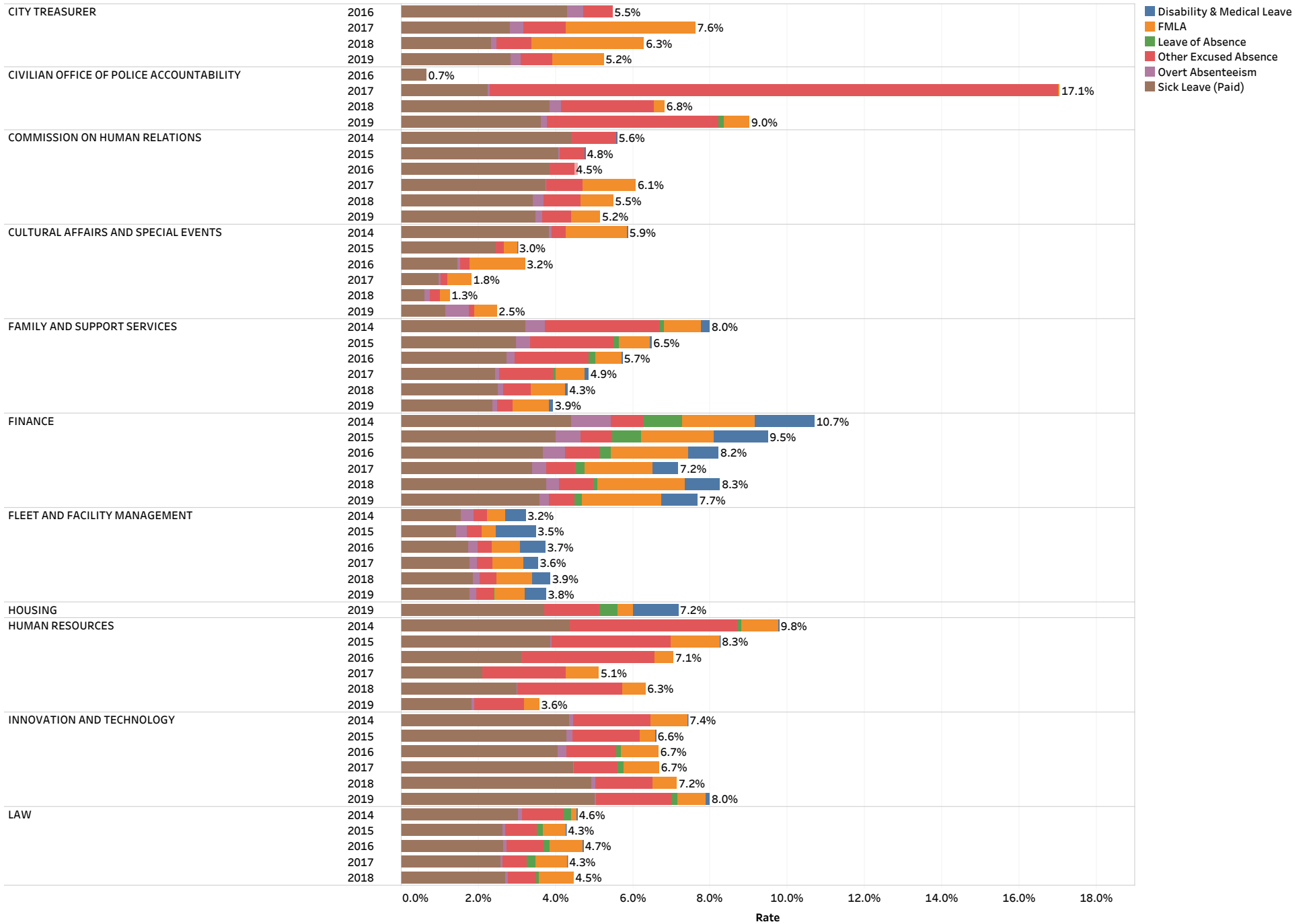
1. Does not include the Chicago Fire Department, Chicago Police Department, Office of the Inspector General or the Board of Elections.
2. Excludes vacation, personal days, and holidays.
3. As of June 2018, the calculation for department historical rates was modified to more accurately reflect each category of lost time.



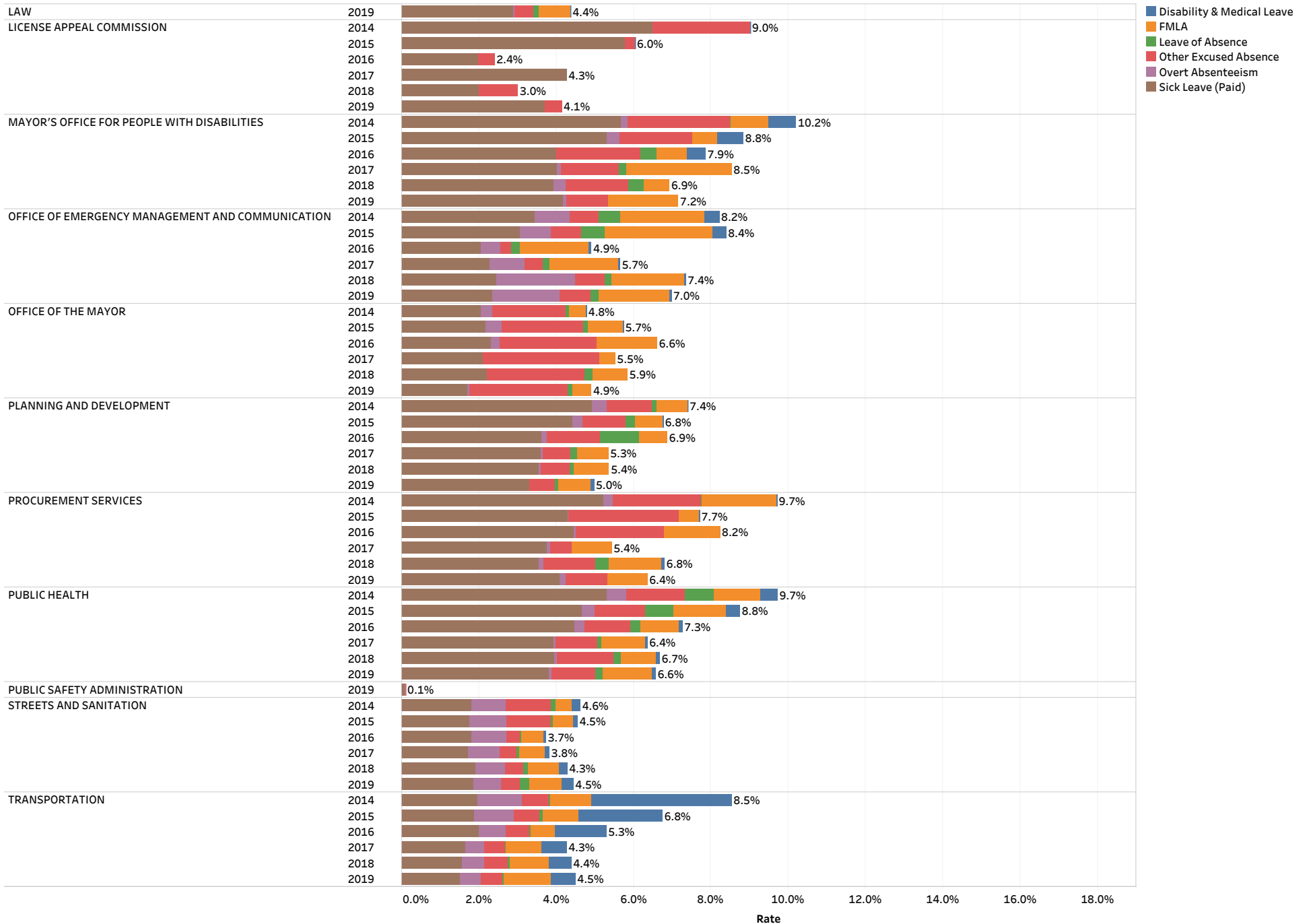
Historical - Department Lost Time Rates by Year



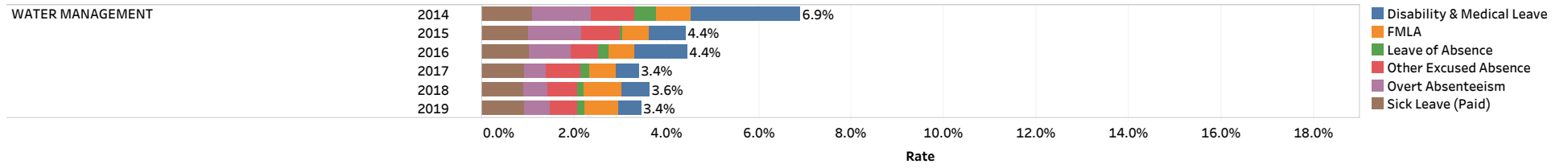
Historical - Department Lost Time Rates by Year



Historical - Department Lost Time Rates by Year



Historical - Department Lost Time Rates by Year



2020 - Department Lost Time Rates by Quarter

