

NOVEMBER 5, 2020 | 1:00 PM – 2:00PM



LET'S TALK CERTIFICATION! CERTIFICATION ROUNDTABLE

City of Chicago, Cook County, State of Illinois, and LGBT Chamber Commerce

Business Enterprise Program For Minorities, Women, and Persons with Disabilities



SPECIAL PROGRAMS

1. Business Enterprise Program – For minorities, Females, and Persons with Disabilities.
2. Veteran Business Program – For Services Disabled Veteran & Veteran Owned Small Businesses.

**VETERAN
OWNED**



BUSINESS ENTERPRISE PROGRAM

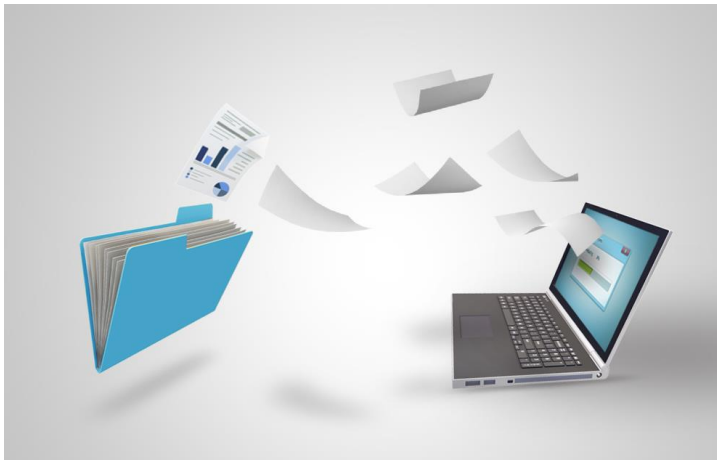
- Promotes the economic development of businesses owned by minorities, women, and people with disabilities and supports their participation in the State's overall procurement process as both prime and subcontractors.
- State agencies and universities have a goal to buy at least 20% of goods and services from BEP certified businesses.

VENDOR REQUIREMENTS

- The business is at least 51% owned and controlled by a minority, woman, or person with disabilities.
 - Control of day to day functions of the business, decision making, knowledge, etc.
- The owner is a citizen of the United States or resident alien.
- The annual gross sales of the business is under \$75 million.



BEP & VBP CERTIFICATION IS FREE OF CHARGE AND PAPERLESS





DID YOU KNOW?

- There are over \$4 billion dollars available for spending with BEP certified vendors.
- Of that, we aspire to spend \$939 million with BEP certified vendors, and meet our goal.

BUSINESS VERTICLES

- Health Industry
- Professional Services
- Construction Industry
- Information and Technology
- Equipment & Commodities
- Food Industry



INFORMATION TECHNOLOGY



Food Industry

BUSINESS ENTERPRISE PROGRAM CERTIFICATION FORMS



Full Certification - 7 years

Annual No Change Affidavit

Recognition Affidavit

FastTrack Certification

FastTrack Application Process

Proof of Certification with City of Chicago or Cook County



Sign and Notarize BEP Affidavit

**Affidavit is automatically generated by BEP Portal.
We can also provide the affidavit upon request**



**Scan documents and e-mail to:
BEP.CMS@Illinois.gov**



State of Illinois

CMS
Illinois Department of
Central Management Services

Quick FastTrack Facts

- 2,800 BEP certified vendors and growing
- FastTrack Certifications can be approved in 7 days or less
- No cost to you the business owner
- Only cost is time
- Requires two documents
- We have a 98% Approval Rate

FINDING OPPORTUNITIES WITH THE STATE OF ILLINOIS

Illinois Procurement Bulletin Boards



www.bidbuy.illinois.gov/bsa



www.procure.state.il.us



www.illinoistollway.com



www.dot.il.us



www.illinois.gov/cdb/

You do not have to be BEP certified to bid on contract opportunities!



NIGP CODES

- The **NIGP Commodity/Services Code** is an acronym for the National Institute of Governmental Purchasing Commodity/Services Code. The NIGP Code is a coding taxonomy used primarily to classify products and services procured by state and local governments in North America.
- **Having the all the correct and NIGP codes will ensure you receive notifications on contracts that include the NIGP codes you listed in the procurement bulletin registrations and in your certification.**

CERTIFICATIONS RECOGNIZED BY CENTRAL MANAGEMENT SERVICES



AGENCIES THAT RECOGNIZE BEP CERTIFICATION

ILLINOIS COMMUNITY COLLEGES

FEDERAL RESERVE BANK *of* CHICAGO

chicago park district



CITY COLLEGES OF CHICAGO



Additional Resources



www.asbdc-us.org



www.aptac-us.org



www.sba.gov

SOI Certification for Procurement Purposes

Illinois Secretary of State (SOS):

- http://www.cyberdriveillinois.com/departments/business_services/home.html

Illinois Board of Elections (BOE):

- <https://www.elections.il.gov/DocDisplay.aspx?Doc=/Downloads/CampaignDisclosure/PDF/BEREPHowToRegister.pdf&MID=178>

Illinois Department of Human Rights (IDHR):

- <https://www2.illinois.gov/dhr/PublicContracts/Pages/default.aspx>

Illinois Procurement Gateway (IPG):

- <https://ipg.vendorreg.com/>

BidBuy:

- <https://www2.illinois.gov/cpo/pathwaytoprocurement/pages/bidbuy.aspx>

For additional assistance please contact us

via phone or email

BEP help desk 312-814-4190 / 1-800-356-9206

e-mail carlos.gutierrez@Illinois.gov



COOK COUNTY OFFICE OF CONTRACT COMPLIANCE

MBE/WBE/VBE/SDVBE/PDBE

CERTIFICATION PRESENTATION

OVERVIEW OF COOK COUNTY GOVERNMENT

Cook County is the second largest County in the United States with over 5 million residents

The County procures a wide variety of goods and services for Cook County Agencies, including:

- Construction, both Vertical (buildings) and Horizontal (roads and bridges)
- Technology products like software and services like IT consulting
- Professional Services such as legal, accounting and consulting services
- Commodities such as office and janitorial supplies
- Healthcare products and services like pharmaceuticals, medical devices and insurance products

OFFICE OF CONTRACT COMPLIANCE

- The Office of Contract Compliance (OCC) certifies Minority, Women, Veteran, Service-Disabled Veteran, and Persons with Disabilities-owned Business Enterprises (MBE/WBE/VBE/SDVBE/PDBEs)
- OCC sets MBE, WBE and DBE goals on contracts and reviews utilization plans to ensure that all County contracts meet the goals, or evaluates when a waiver of the goals is appropriate
- OCC engages with the business community to increase awareness of the program and encourages businesses to participate
- OCC works with County user departments to promote the program and to help M/WBE firms connect with contracting opportunities

MBE/WBE/VBE/SDVBE/PDBE CERTIFICATION

Certification Criteria

- Small Business in County Marketplace [Cook, DuPage, Will, Lake, McHenry, Kane Counties] (Illinois for VBE/SDVBE/PDBE)
- 51% Majority Ownership and control by Qualified Owner
- Viable Business
- Economic and Professional Independence
- Expertise in Area(s) of Specialty
- Qualified Owner(s) have legal and actual control
- Provide a Commercially Useful Function

MBE/WBE/VBE/SDVBE/PDBE CERTIFICATION (Part 2)

- The MBE/WBE/VBE/SDVBE/PDBE applicant firm must be a Small Business as defined by the U.S. Small Business Administration as related to the nature of the work the Applicant seeks to be certified.
 - Business Size Standards are found in 13 CFR Part 121
 - A Business is not an eligible small business enterprise in any calendar fiscal year (1) in which its gross receipts, averaged over five fiscal years; or (2) the number of employees exceed the size standards related to the nature of work the Applicant seek to perform
 - * gross receipts cap or number of employees cap depends on nature of work. See 13 CFR Part 121 for which standard applies to your business

MBE/WBE/VBE/SDVBE/PDBE CERTIFICATION (Part 3)

- The MBE/WBE applicant firm must be an Economically Disadvantaged firm which is determined by the 51+% qualifying owner's personal net worth.
 - Personal Net Worth Statement is required of the 51% qualifying applicant owner.
 - The 51% qualifying applicant owner(s)' personal net worth must be less than the current personal net worth net value size standard of approx. \$2.3M (as indexed annually by the Consumer Price Index) for all MBE WBE and PDBE applicants.

CERTIFICATION APPLICATION

- The certification starts with the submission of a fully-executed and notarized Schedule A Application including the required supporting documentation as required on the application checklist.
- The Schedule A Application must be submitted via our on-line Diversity Management System with the attachments electronically uploaded. (Original Signature page required).
- Currently, all VBE/SDVBE/PDBE Applications are FREE. However, all firms seeking the status of just MBE and/or WBE are required to pay a \$250.00 fee when applying for certification. Only one fee required for multiple certifications.
- The Office of Contract Compliance reviews Schedule A Applications on a first-come, first-served basis. Our goal to review and finalize an application within 90 days of receipt of the complete application and required supporting documentation.
- All new applicants, except for those offering only professional services (consulting, legal, financial services, etc.), must submit to an in-person site visit.
- ****During the COVID-19 pandemic, all site visits are being conducted virtually****

MOST COMMON CAUSES FOR DELAYS

- Failure to properly organize the business and observe legal formalities
(examples: no corporate minutes, no stock ledger, no stock certificates)
- Missing Documentation
 - Incomplete items
 - Missing Signatures
 - Missing Notary Stamps
- Failure to respond to OCC inquiries

MAINTAINING CERTIFICATION

- **Schedule A Certification** – original term of 5 Years, with an annual revalidation prior to 60 business days of the original expiration date – in the form of a **No-Change Affidavit**;
- **Recertification Affidavit** every 5 Years prior to 60 business days of the original expiration date;
- Applicant firm has the duty to notify OCC within fifteen (15) business days of any changes in ownership, control or any other matters or facts affecting the firm's eligibility for certification

COOK COUNTY AND CITY OF CHICAGO CERTIFICATION RECIPROCITY

- The reciprocal Minority and Women Business Enterprise initiative allows your business to be certified by either the County or City and have either certification apply to both agencies.
- This combined effort for the County and City lessens the financial burden and streamlines the certification process by providing a “one stop shop” for M/WBEs interested in participating in County and City (including Sister Agencies) procurement opportunities

HOW TO UTILIZE YOUR CERTIFICATION

Market! Market! Market!

- Introduce your firm to County agencies (OCC can help!)
- Solicit Prime Vendors
- Solicit MBE/WBEs as partners
- Participate in vendor fairs, business expos & workshops
- Join Chambers of Commerce
- Research past government contract bids/proposals
- Engage with the Assist Agencies (OCC can help connect you!)

CONTACT US

OFFICE OF CONTRACT COMPLIANCE

118 NORTH CLARK

ROOM 1020

CHICAGO, IL 60602

312-603-5502

CONTRACT.COMPLIANCE@COOKCOUNTYIL.GOV



City of Chicago Construction Summit

November 5, 2020

Supplier Diversity Resources



Founded in 1996 as the Chicago Area Gay & Lesbian Chamber of Commerce. Today, as the LGBT Chamber of Commerce of Illinois, we serve nearly 300 members throughout Illinois.

As one of the oldest dedicated LGBT chambers in the country, we are older than The National LGBT Chamber of Commerce, founded in 2002.

We established The LGBT Business Foundation of Illinois in 2016 to expand fair access to economic opportunities for the LGBT Community.

CHAMBER MEMBERS

BUSINESS PROFESSIONALS & SERVICES

FINANCE & INSURANCE

HEALTHCARE

REAL ESTATE

PERSONAL CARE



Resources

- Networking
 - 70+ Events
 - Affinity Network Groups: Young Professionals, **LatinX**, **Women**, and Black
- Marketing
 - Public Directory Listing
 - Chicago PRIDE Business Expo
- Professional Development
 - LGBTQ+ Biz Bootcamp
- Advocacy
 - LGBT Business Enterprise Certification



LGBT Business Enterprise Certification

- 51% LGBT Owned
- Headquarters in the United States
- Formed as legal entity in the United States
- Independent from non-LGBT business enterprise
- www.nglcc.com/org-certified



JOIN US!

04|2021 LGBTBE: Now What

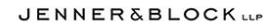
05|2021 Spring Roundtable

09|2021 Supplier Diversity Summit

10|2021 LGBTBE: Now What



2020 CORPORATE PARTNERS



CONTACT

JEROME' (JEREMY) HOLSTON

DIRECTOR

JHOLSTON@LGBTCC.COM

773 303 0167

WWW.LGBTCC.COM

FOLLOW US ON SOCIAL MEDIA!



[FACEBOOK.COM/CHICAGODPS](https://www.facebook.com/CHICAGODPS)



[TWITTER.COM/CHICAGODPS](https://twitter.com/CHICAGODPS)



[YOUTUBE.COM/CHICAGODPS](https://www.youtube.com/CHICAGODPS)



[LINKEDIN.COM/COMPANY/CHICAGODPS](https://www.linkedin.com/company/CHICAGODPS)

