



DPS DEPARTMENT OF
PROCUREMENT
SERVICES

On behalf of

**Mayor
Lori E. Lightfoot**

And

**Chief Procurement Officer
Shannon E. Andrews**

Welcome to
The City of Chicago

Department of Procurement Services

Informational Workshop





O'HARE & MIDWAY

INTERNATIONAL AIRPORTS

Propelling Your Business Through Aviation Opportunities

CDA Design & Construction

ALEX LEON
DEPUTY COMMISSIONER



Chicago Department of Aviation 



AGENDA

- CDA CONTRACTING
- COMMITMENT TO CAPACITY BUILDING
- WHAT IS O'HARE 21
- KEY O'HARE 21 PROCUREMENTS
- O'HARE CIP
- MIDWAY CIP
- CDA TERM CONTRACTS

CDA CONTRACTING

CDA CONTRACTING

- The Chicago Department of Aviation (CDA) is in the midst of major modernization efforts for both O'Hare and Midway—presenting thousands of opportunities for local firms and job seekers to participate in the economic success of our airports.
- CDA administers contracts by working in close partnership with the Chicago Department of Procurement Services (DPS) the authority for all City contracting and compliance with local and federal minority participation requirements.
- CDA and DPS work together to promote the inclusion of businesses of all sizes and types, and residents throughout the City's 77 community areas in airport project. Throughout the year, CDA and DPS facilitate workshops, certification, and other community events designed to build capacity by involving local talent and partners.

COMMITMENT TO CAPACITY BUILDING

WORKFORCE DEVELOPMENT AND OUTREACH IN 2018

- CDA hosts community engagement opportunities throughout the year to connect residents with thousands of airport opportunities set to come online.
- CDA 2018 Outreach Events:
 - 51 Outreach Events including Community Workshops, Hiring Events, CPS Partnership Events, etc.
 - 7 Career Fairs led by CDA
 - 1,300+ Residents Attended
- 30 Student Interns
 - Includes CPS, City Colleges, One Summer Chicago
- Work with various community agency partners to hire residents at the airport:
 - Skills for Chicagoland's Future
 - Chicago Women in Trades (CWIT)
 - North Lawndale Employment Network
 - Safer Foundation



WORKFORCE DEVELOPMENT - LOOKING AHEAD 2019

- Airport capital programs will support tens of thousands of jobs; opportunities that will evolve into long-term aviation careers. Economic inclusion plan to drive maximum for diversity and inclusion
- Engaging and empowering youth:
 - CPS career and technical programs and capstone classes provide training to mirror permanent airport careers
 - CCC on college-to-careers training
- Continued collaboration with the City Council Diversity Working Group



INCREASING MBE, WBE AND DBE PARTICIPATION

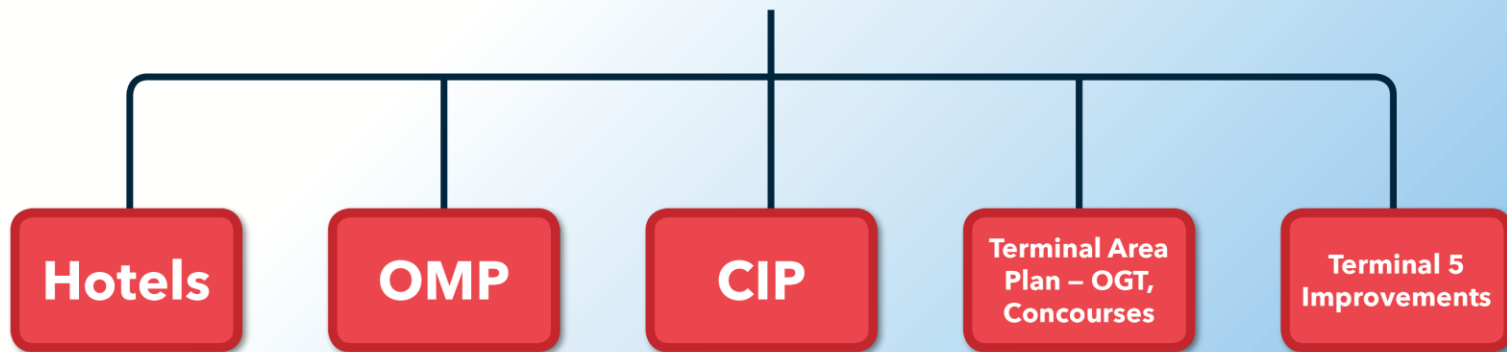
- Over the next decade an estimated **\$2 billion** in contracts will be awarded to M/W/DBE firms for design and construction services on O'Hare 21.
- Increased collaboration with assist agencies, unions, and CMARs to drive all workforce and economic inclusion efforts
- Increase opportunities for small, diverse, local firms to participate:
 - Bid incentives: 29 contracts already earmarked via SBI/MBI initiatives
 - **(WHAT CAN WE SAY ABOUT HELPING THEM BECOME PRIMES?)**



WHAT IS O'HARE 21

WHAT IS O'HARE 21?

O'HARE 21



O'HARE 21 – KEY PROJECTS

- Key projects that are completed, under construction, or planned:
 - The Terminal Area Plan (TAP)
 - Completion of the O'Hare Modernization Program major airfield projects:
 - Runway 9C-27C
 - Runway 9R-27L Extension
 - Terminal 5 Concourse M gate expansion
 - Terminal 3 Concourse L gate expansion
 - Multimodal Facility
 - Central Deicing Pad
 - On-Airport Hotel Developments
 - Northeast Cargo Development
 - 15-Year O'Hare Capital Improvement Plan



O*HARE 21

O'HARE 21'S CENTERPIECE PROJECT – TAP

- Terminal Area Plan (TAP) is the vision for modern and best in class O'Hare passenger terminal facilities
 - Replaces 56-year-old Terminal 2 with the O'Hare Global Terminal
 - Provides 25% additional gate capacity vs. existing facilities to serve modern aircraft fleet
 - Increases passenger terminal area by more than 60% vs. existing facilities to 8.9 million square feet
 - Expands terminal and landside capacity to accommodate anticipated demand
 - Fully integrates domestic and international terminal operations to enhance passenger journey:
 - New and expanded immigration and customs facilities
 - Co-location of domestic and international arrival gates
 - Potential for alliance airline groups to consolidate operations within a single terminal facility
 - New and expanded baggage handling infrastructure

- Reduce airfield congestion and ground delay resulting from lack of aircraft parking positions
- Modernize the oldest terminal facilities at O'Hare

- Enhance revenue opportunities while reducing airline and airport operating costs
- Enhance competition among all airlines

O'HARE GLOBAL TERMINAL

- The O'Hare Global Terminal is key to integrating international passenger processing with both hub carriers' domestic operations
 - A natural light filled upper level arrivals hall will welcome international passengers to Chicago
 - A world-class international arrivals facility will speed immigration and customs processing using advanced technologies
 - Hassle-free connections for international arriving passengers transferring to onward domestic flights in Terminals 1 or 3
- Spacious concourse will provide the ultimate in concessions, departure lounges, and public amenities

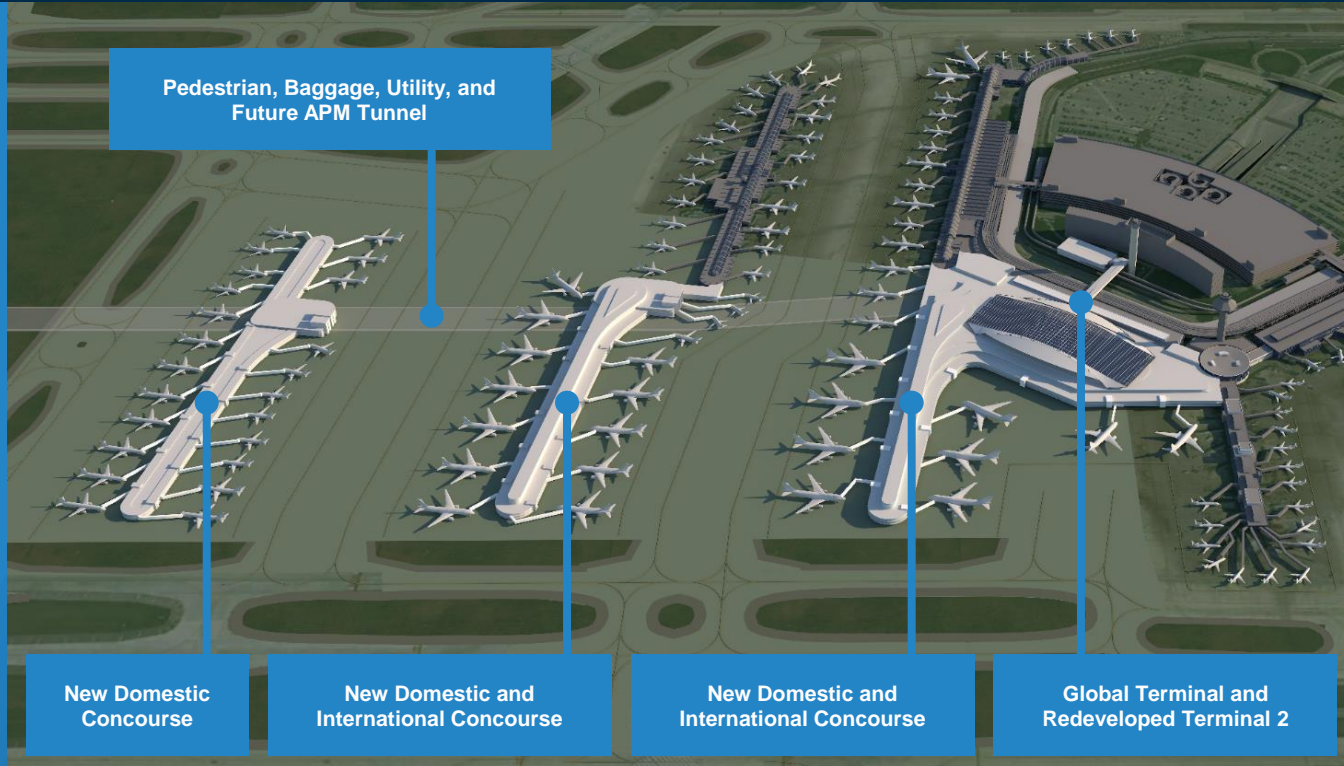
EXISTING



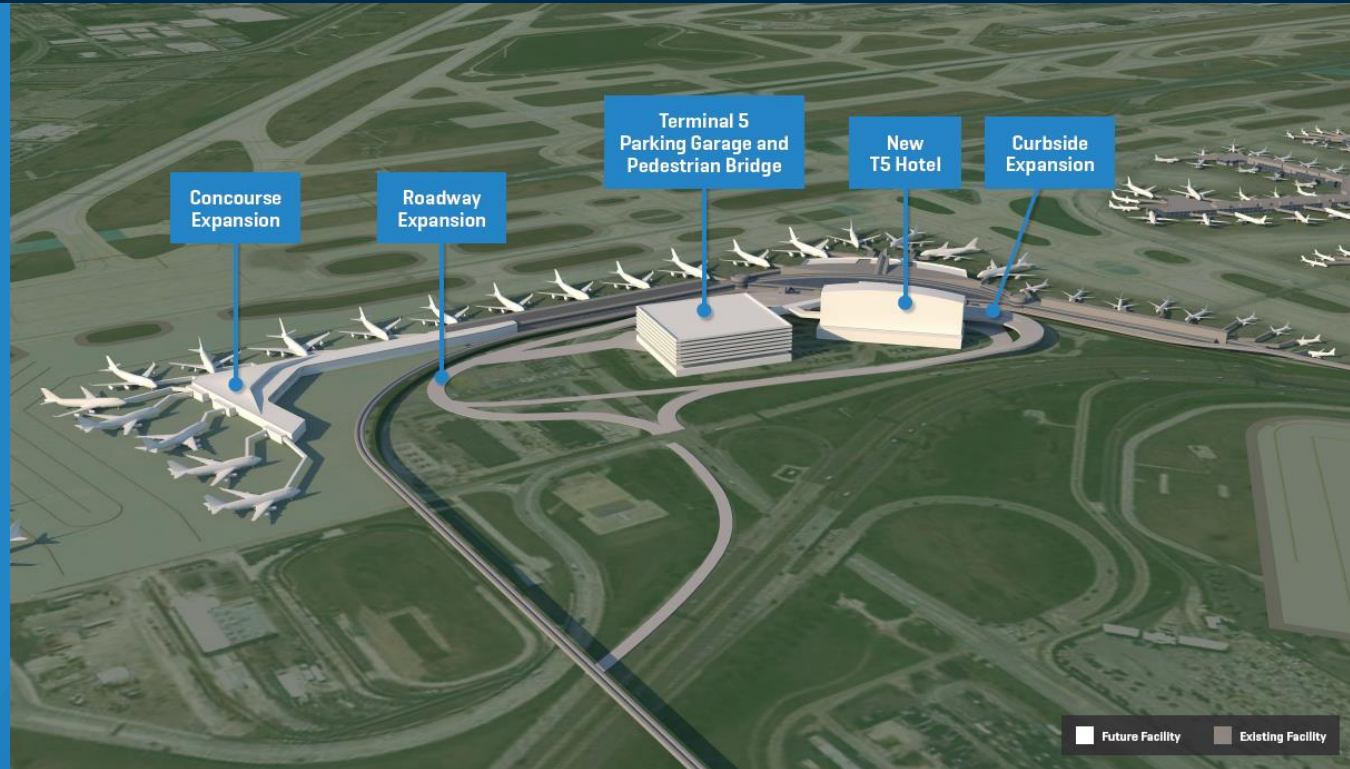
PROPOSED



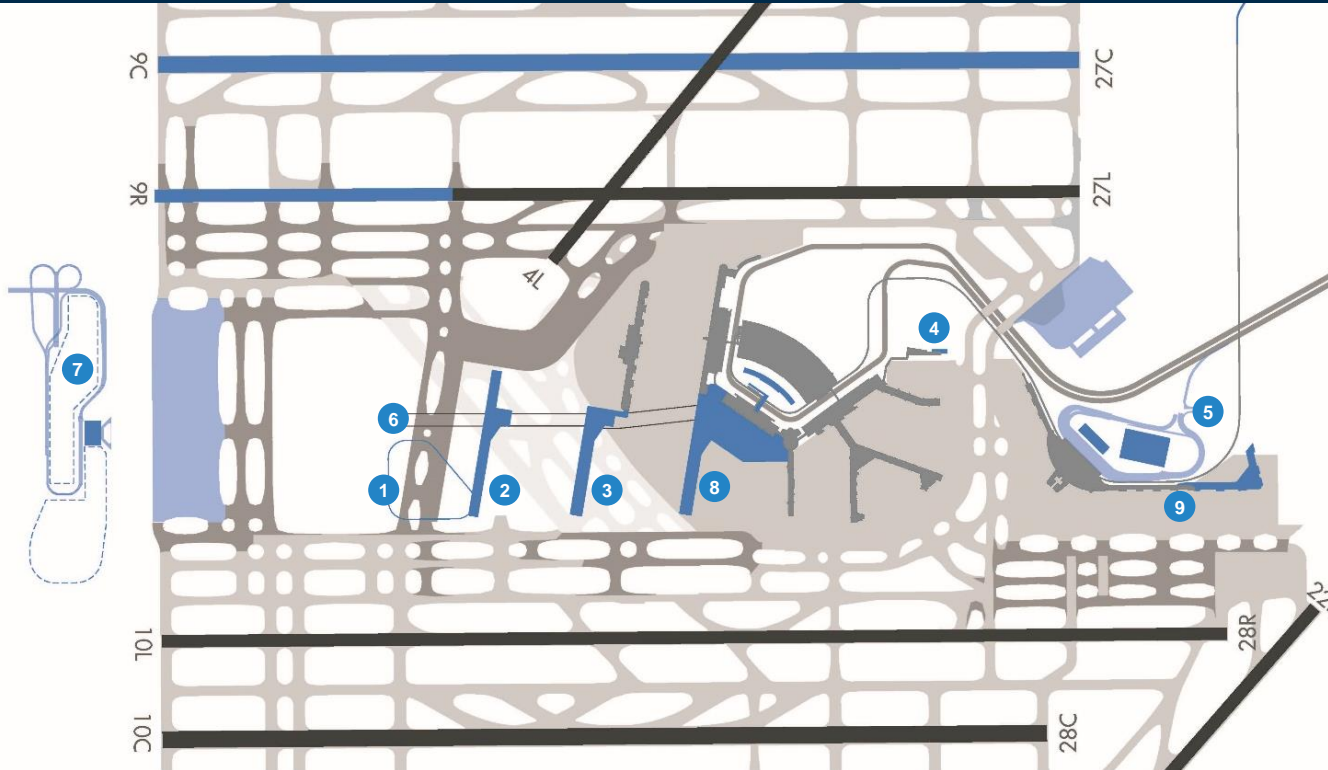
O'HARE GLOBAL TERMINAL AND SATELLITE CONCOURSES



TERMINAL 5 INVESTMENTS – NEARLY ONE BILLION DOLLARS OVER THE NEXT FIVE YEARS



TERMINAL AREA PLAN – PHASE I



Phase I Terminal Area Plan

Passenger Terminals

- 1 Central Basin Elimination
- 2 Satellite 1 Concourse
- 3 Satellite 2 Concourse
- 4 Concourse L 3-Gate Expansion
- 5 Terminal 5 Curbside, Roadway, and Parking Improvements (Phase 1)
- 6 Consolidated APM, Pedestrian, and Utility Tunnel
- 7 Western Parking Facility
- 8 Terminal 2 Expansion and Redevelopment
- 9 Terminal 5 Repurposing

SUSTAINABLE AIRPORT MANUAL (SAM)

- 1st airport sustainability guidelines
- 1st rating system for an airport – 239 ratings issued to date
- Serves as “LEED for Airports”
- Endorsed by USGBC, FAA, EPA
- Created with input from 200+ stakeholders
- Contractually required
- SAM will continue to be incorporated into airport development projects and operations/maintenance activities



KEY O'HARE PROCUREMENTS

CITY UNVEILS 5 POTENTIAL DESIGN CONCEPTS

- Shortlist of 5 firms in November
- Public comments on designs – January 17th - 23rd, 2019
- As part of the RFP, the City has asked teams for commitment to at least 2 mentor protégés



Fentress-EXP-Brook-Garza



Foster Epstein Moreno JV



Studio ORD



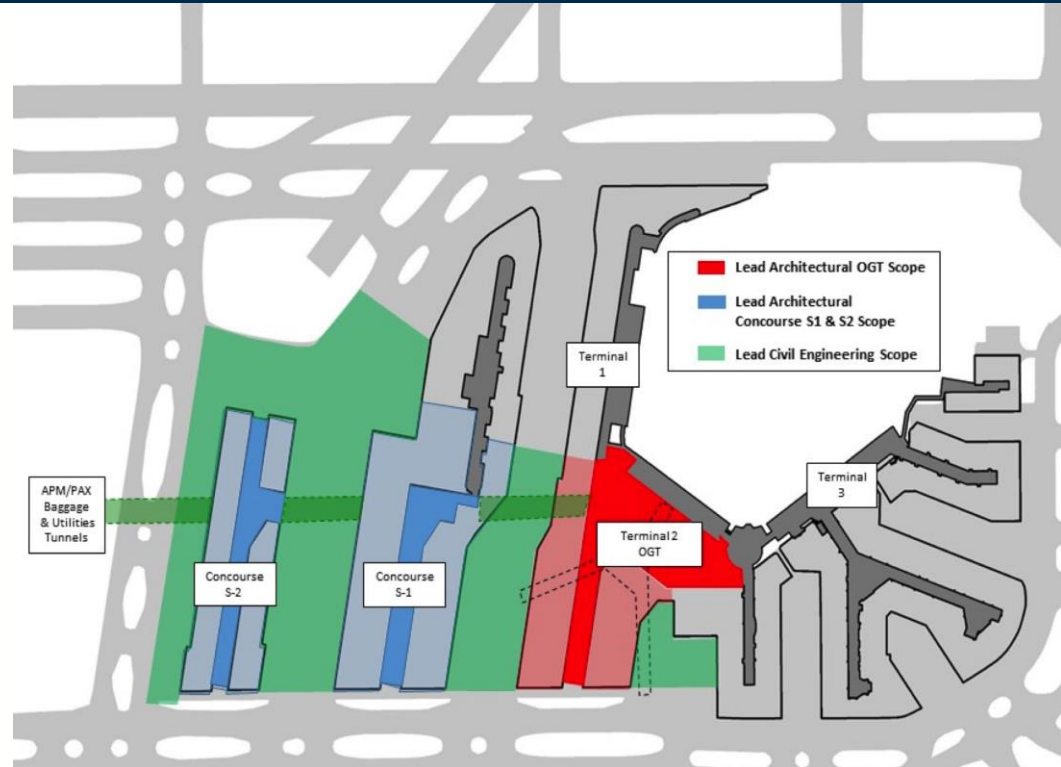
Skidmore, Owings & Merrill



Santiago Calatrava, LLC

TAP LEAD TUNNEL DESIGN AND ENGINEERING SERVICES

- RFQ advertised January 18, 2019
- Statement of Qualifications due March 6, 2019
- Increased in M/WBE subcontracting opportunities, 30% MBE, 8% WBE
- Inclusion of mentor-protégé



CONSTRUCTION MANAGEMENT SERVICES



ANTICIPATED ADVERTISEMENT DATE: **2ND QUARTER 2019**

ANTICIPATED AWARD DATE: **3RD QUARTER 2019**

ANTICIPATED DURATION: **5 YEARS**

CONSTRUCTION MANAGEMENT

Multiple Construction Manager contracts will be awarded to oversee various segments of O'Hare 21 Terminal Area Plan, the Capital Improvement Program (CIP) and the TAP enabling projects including target market contracts.

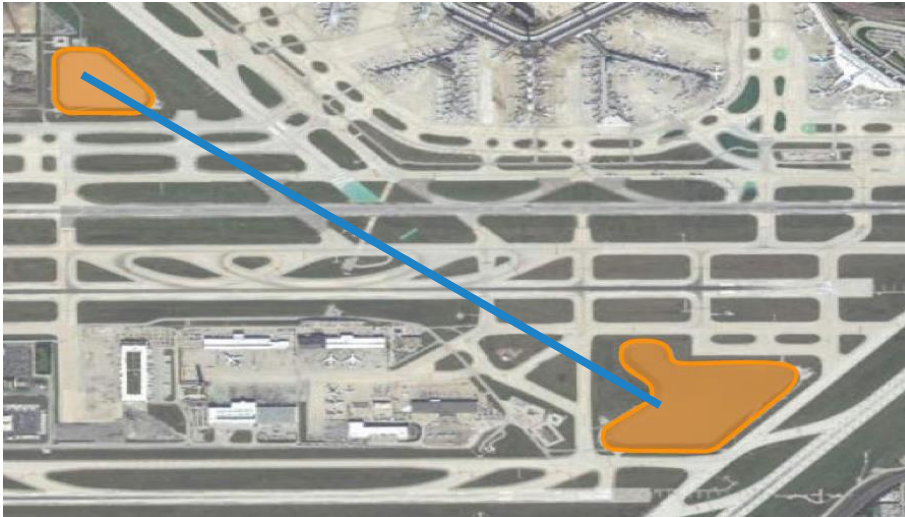
Projects will include airside projects, landside projects, terminal projects, site preparation and security packages.

- 2 categories, up to 5 in each category
- Target Market and Non-Target Market (M/WBE)

A wide-angle photograph of the Chicago skyline, featuring prominent skyscrapers like the Willis Tower. The image is slightly hazy and has a blue gradient overlay on the right side. The text 'O'HARE CIP' is superimposed in large, bold, black letters on the right side of the skyline.

O'HARE CIP

SOUTH AIRFIELD DETENTION CONSOLIDATION



DESIGN / BUILD

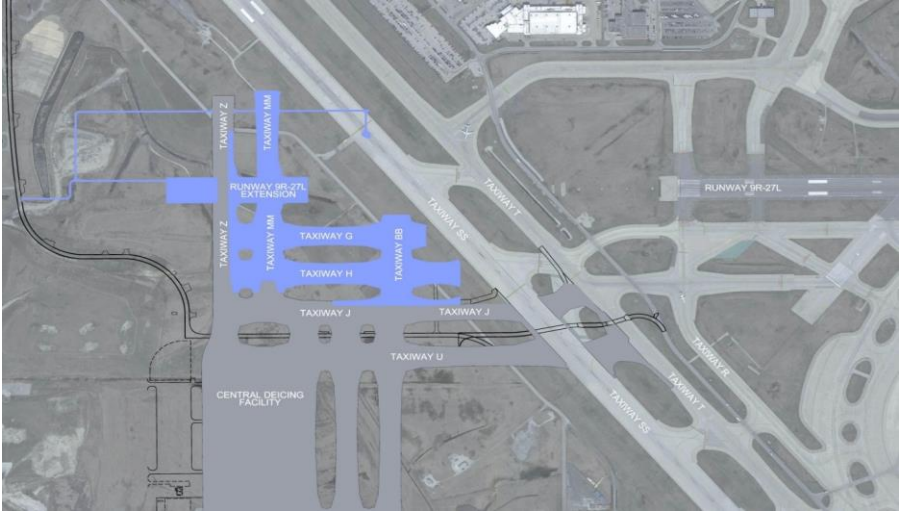
Modifications to the Central and South Basins to accommodate the future terminal developments. Work includes earthwork, large diameter deep tunnel construction, modifications to mechanical equipment, including an existing pump station. Project will be delivered as design-build. M/WBE

DESIGN/BUILD (RFQ) ADVERTISEMENT DATE: **JANUARY 22, 2019**

QUALIFICATIONS DUE **MARCH 8, 2019**

ESTIMATED CONTRACT VALUE: **\$140 - \$180 MILLION**

RUNWAY 9R-27L EXTENSION – WEST PACKAGE



CONSTRUCTION

Phased construction of airfield pavements, PCC and AC, airfield lighting and signage, site preparation, grading and drainage, site restoration, utilities and other appurtenances and incidental work. Project site is located in the Air Operations Area (AOA) - Airside. M/WBE 26%/6%.

ANTICIPATED CONSTRUCTION
ADVERTISEMENT:

1ST QUARTER 2019

ESTIMATED CONSTRUCTION VALUE:

\$40 - \$60 MILLION

PEDESTRIAN TUNNEL REPAIRS



ANTICIPATED CONSTRUCTION ADVERTISEMENT: 1ST QUARTER 2019

ANTICIPATED CONSTRUCTION VALUE: \$25 - \$30 MILLION

CONSTRUCTION

Remediation of water infiltration throughout the pedestrian tunnels below the concourses and roadways. Scope also includes interior remodeling and updating of pedestrian tunnels. New finishes will allow for a back-up drainage system as a second line of defense to any possible water migration through the tunnel structure. New energy efficient lighting and mechanical distribution is included. Project area extends into the area of the tunnels under the Hilton for finishes continuity. M/WBE

LEAK REPAIRS TO B&C TUNNEL



CONSTRUCTION

Investigation of the sources of leaking in the pedestrian tunnel that connects Terminal 1 Concourses B & C and the development of solutions that will remediate this problem.
M/WBE

ANTICIPATED CONSTRUCTION
ADVERTISEMENT:

1ST QUARTER 2019

ESTIMATED CONSTRUCTION VALUE:

\$20 - \$25 MILLION

REPLACEMENT OF ROTUNDA AIR HANDLING UNITS



ANTICIPATED CONSTRUCTION ADVERTISEMENT: 2ND QUARTER 2019

ESTIMATED CONSTRUCTION VALUE: \$12 - \$14 MILLION

CONSTRUCTION

Replacement of 11 Rotunda Air Handling Units. Recondition of the existing ductwork. The new, efficient, code complying units will serve the environments that require different temperature controls, air movement, cooling capacities, heating capacities, with separate multi-zone controls to reconnect to existing ducting. M/WBE

ELEVATED PARKING STRUCTURE REPAIRS



CONSTRUCTION

Repairs to the main Elevated Parking Structure (EPS) including floor slab and wall panel repairs, miscellaneous exterior repairs, expansion joints, spiral ramps, spandrels, drainage improvements, and waterproofing of the structure. M/WBE

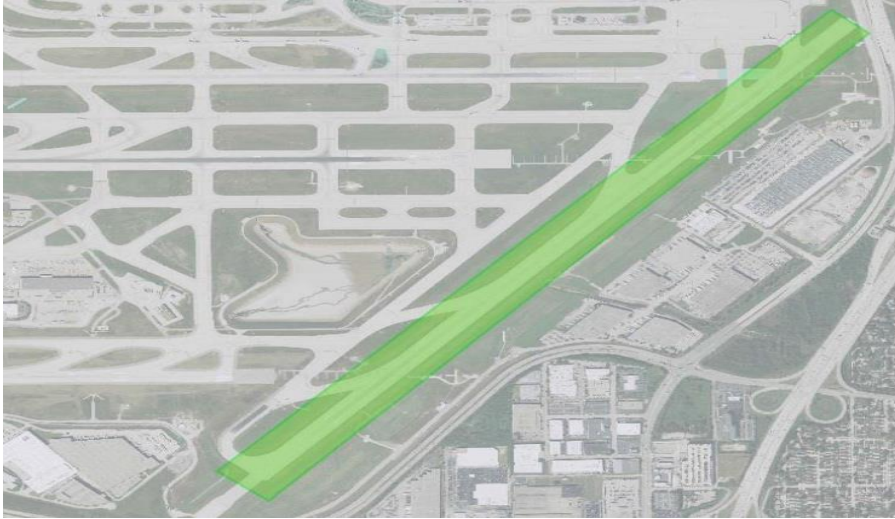
ANTICIPATED CONSTRUCTION
ADVERTISEMENT:

2ND QUARTER 2019

ESTIMATED CONSTRUCTION VALUE:

\$20 - \$25 MILLION

RUNWAY 4R-22L REHABILITATION



CONSTRUCTION

This project consists of the design and construction of the rehabilitation of Runway 4R-22L and adjacent taxiways. The construction scope will include pavement removal and replacement of the existing runway surface as well as the necessary striping, grooving and LED lighting installation. MBI-1

ANTICIPATED CONSTRUCTION
ADVERTISEMENT:

4TH QUARTER 2019

ESTIMATED CONSTRUCTION VALUE:

\$15 - \$20 MILLION



MIDWAY CIP

TERMINAL RAMP IMPROVEMENTS



CONSTRUCTION

Removal and replacement of the existing Concourse C 17" Portland Cement Concrete apron. Removal and replacement of the 6" Concrete Treated Permeable Base Course as well as adjustments and repairs to existing drainage, grounding tie-downs and the new pavement markings. Also included is the selective removal and replacement of concrete panels outside of the C Concourse area. DBE/MBE/SBE/WBE Goals TBD

ANTICIPATED CONSTRUCTION ADVERTISEMENT: 1ST QUARTER 2019

ESTIMATED CONTRACT VALUE: \$11 - \$12 MILLION



TERM CONTRACTS

AIRSIDE RAMP REPLACEMENT & CONCRETE CRUSHING TERM CONTRACT



ADVERTISEMENT DATE: January 10, 2019

BID OPENING DATE: February 21, 2019*

ESTIMATED CONTRACT VALUE: \$90 - \$100 MILLION

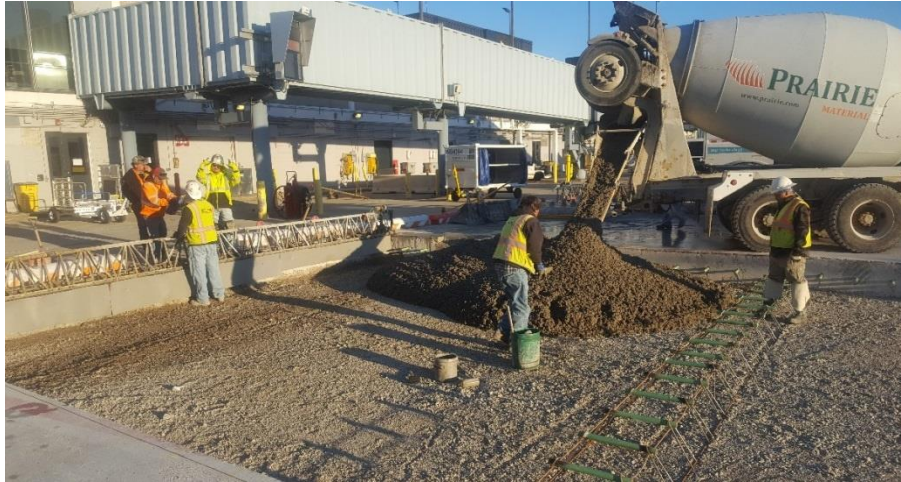
CONSTRUCTION

5-year Term contract to remove and replace failed concrete pavement inside the terminal gate area at O'Hare. Includes crushing excavated concrete.

Work areas for each year are determined and scheduled in consultation with CDA and Airlines. Most work is done during nighttime hours when airlines operate gate area at low traffic volumes.

M, W, F

AIRSIDE CONCRETE REPAIR & REPLACEMENT TERM CONTRACT



CONSTRUCTION

5-year Term contract to remove and replace failed Airside concrete pavement at O’Hare and Midway.

Work areas for each year are determined and scheduled in consultation with CDA in response to FAA Airfield Certification Inspection.

Most work is done during nighttime hours when aircraft traffic volumes are low.

M/A/B/E

ADVERTISEMENT DATE:	January 10, 2019
BID OPPENING DATE:	February 21, 2019
ESTIMATED CONTRACT VALUE:	\$5 - \$10 MILLION

PAVEMENT JOINT SEALING TERM CONTRACT



ADVERTISEMENT DATE: January 10, 2019

BID OPENING DATE: March 14, 2019

ESTIMATED CONTRACT VALUE: \$5 - \$10 MILLION

CONSTRUCTION

5-year Term contract to joint seal, saw cut, core and kerf surface pavement at O'Hare and Midway.

Work for each year is determined and scheduled in consultation with CDA in response to FAA Airfield Certification Inspection. Most work is done during nighttime hours when aircraft traffic volumes are low.

M/WBE

AIRPORT MAINTENANCE AND REPAIR TERM CONTRACT



ANTICIPATED ADVERTISEMENT DATE: 2nd QUARTER 2019

ESTIMATED CONTRACT VALUE: \$4 - \$5 MILLION / YEAR

CONSTRUCTION

Rental of equipment for repair work for FAA certification reimbursement.

Rental of equipment for water main repairs.

Rental of equipment for staging areas, construction, and maintenance.

Rental of equipment for regrading of soils and drainage ditches.

Rental of equipment for on-call services or other projects as required.

M/WBE

RUBBER REMOVAL TERM CONTRACT



ANTICIPATED ADVERTISEMENT DATE: 2nd QUARTER 2019

ESTIMATED CONTRACT VALUE: \$2 - \$3 MILLION

CONSTRUCTION

5-year Term contract to periodically remove rubber and other contaminants from Runways and other pavement surfaces at O'Hare and Midway.

Contractor on call to perform duties as directed by CDA Operations in response to surface friction reports. Runways usually done every 3-months.

Most work is done during nighttime hours when aircraft traffic volumes are low.

M/WBE

ASPHALT PATCHING & OVERLAY TERM CONTRACT



ANTICIPATED ADVERTISEMENT DATE: 2nd QUARTER 2019

ESTIMATED CONTRACT VALUE: TBD

CONSTRUCTION

5-year Term contract to perform cold patch and hot mix asphalt pavement overlay and repairs, pavement grooving and grinding, pavement coring, and related work at O'Hare and Midway.

Work for each year is determined and scheduled in consultation with CDA in response to FAA Airfield Certification Inspection. Most work is done during nighttime hours when aircraft traffic volumes are low.

M/WBE

VISIT WWW.FLYCHICAGO.COM

Welcome to the Chicago Department of Aviation
Connecting You Everywhere

O'HARE
INTERNATIONAL
AIRPORT



MIDWAY
INTERNATIONAL
AIRPORT



cda

CHICAGO
DEPARTMENT
OF AVIATION

Rahm Emanuel, Mayor

© 2016 Chicago Department of Aviation



AWARENESS &
ASSISTANCE



AIRPORTS
GOING GREEN



SIGN UP FOR
WEB ALERTS

CDA

Chicago Department of Aviation ****

O'HARE & MIDWAY
INTERNATIONAL AIRPORTS



Chicago Department of Aviation 

JAMIE L. RHEE, COMMISSIONER

WWW.FLYCHICAGO.COM



Want More Information? Check out....



www.facebook.com/ChicagoDPS



[@ChicagoDPS](https://twitter.com/ChicagoDPS)



www.youtube.com/ChicagoDPS



www.cityofchicago.org/dps

Note: All bid advertisements, addenda, upcoming workshops, events, new policies, and procedures that affect vendor community.





Questions?





Thank You For Attending

For more information visit: www.cityofchicago.org/procurement

City of Chicago
Department of Procurement Services
121 North LaSalle Room 806
312-744-4900

