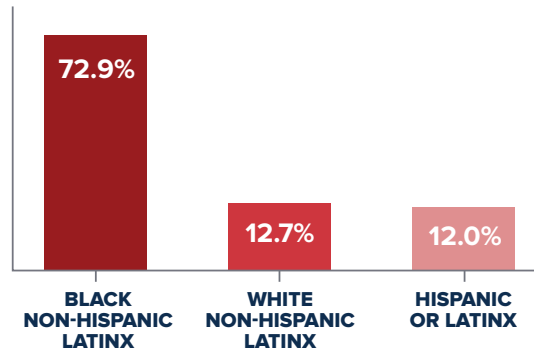
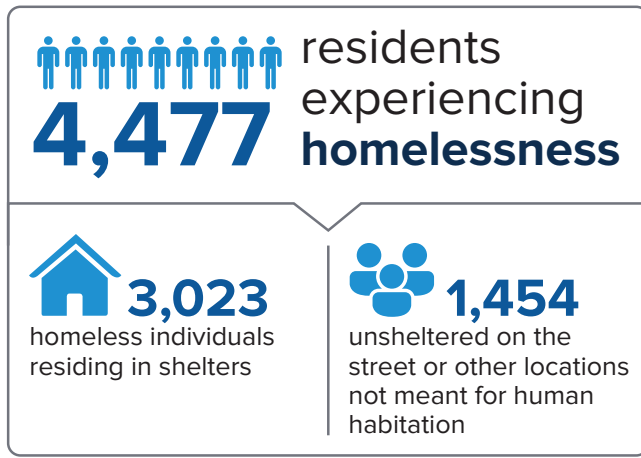


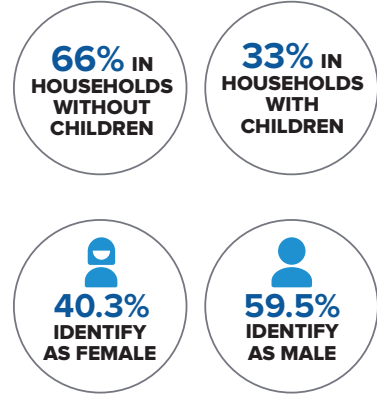
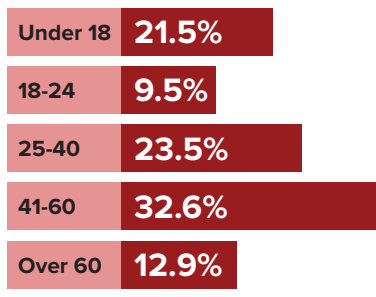
★ SNAPSHOT OF HOMELESSNESS IN CHICAGO

Every year, the Chicago Department of Family and Support Services tallies the number of residents experiencing homelessness in homeless shelters, encampments and other unsheltered areas not meant for human habitation. The annual data helps guide federal funding, services and resource planning to homeless services and provides a snapshot of homelessness in the city.



Racial and Ethnic Makeup of Residents Experiencing Homelessness

+ Ages of Residents Experiencing Homelessness



Household Composition Among Residents Experiencing Homelessness

Gender Identity Among Residents Experiencing Homelessness

The 2021 PIT Count looked different than previous years given the need to protect the health and safety of all involved during the COVID-19 pandemic. The results of the 2021 PIT Count are not comparable to past years due to methodology changes and unique circumstances of COVID-19. More detail on the components of the PIT Count are below:

Sheltered Count 2021

The shelter count was held on January 26, 2021. Due to the pandemic, shelters with shared sleeping spaces were operating fewer beds to allow for safe distancing in line with public health guidance. The City was operating several alternate shelter facilities to restore beds, but not to full pre-COVID capacity. Shelter bed utilization was also lower than previous years, particularly in shelters serving families, due to potential factors such as the eviction moratorium, economic stimulus payments, increased housing and homeless prevention resources, and client reluctance to access shared spaces.

Unsheltered Count 2021

The unsheltered count was held from January 26, 2021 to January 29, 2021. Chicago implemented major changes in methodology this year to protect health and safety of all involved, including:

- Reliance on existing outreach staff, rather than convening hundreds of staff and volunteers
- Counting in a sample of areas of the city, rather than a complete canvas
- Counting over the course of several days, including during daytime hours
- Counting based on a brief survey, rather than a typical mix of surveys and observation

The PIT Count was organized and led by the Chicago Department of Family and Support Services in collaboration with All Chicago and in consultation with the Nathalie P. Voorhees Center for Neighborhood and Community Improvement of the University of Illinois at Chicago. A full summary of the 2021 results will be released soon and made available at

www.cityofchicago.org/fss.