



# Are Your **Pets** Protected?

Download the Smart911 App or Sign Up Online Today







# Are Your **Pets** Protected?

Download the Smart911 App or Sign Up Online Today



# How to Prevent your Pets from Starting Fires:



Never leave pets alone around an open flame. If your pet is rowdy, it's best to avoid candles.



Pet-proof your house. Keep hazards out of paw's reach, like flammables or electrical wires.



Have an emergency plan with a safe location to take your pet after a house fire.



Make sure your pet is microchipped or wearing ID in case you get separated during a fire.



Make sure smoke alarms are functioning properly, and educate your family on fire safety.



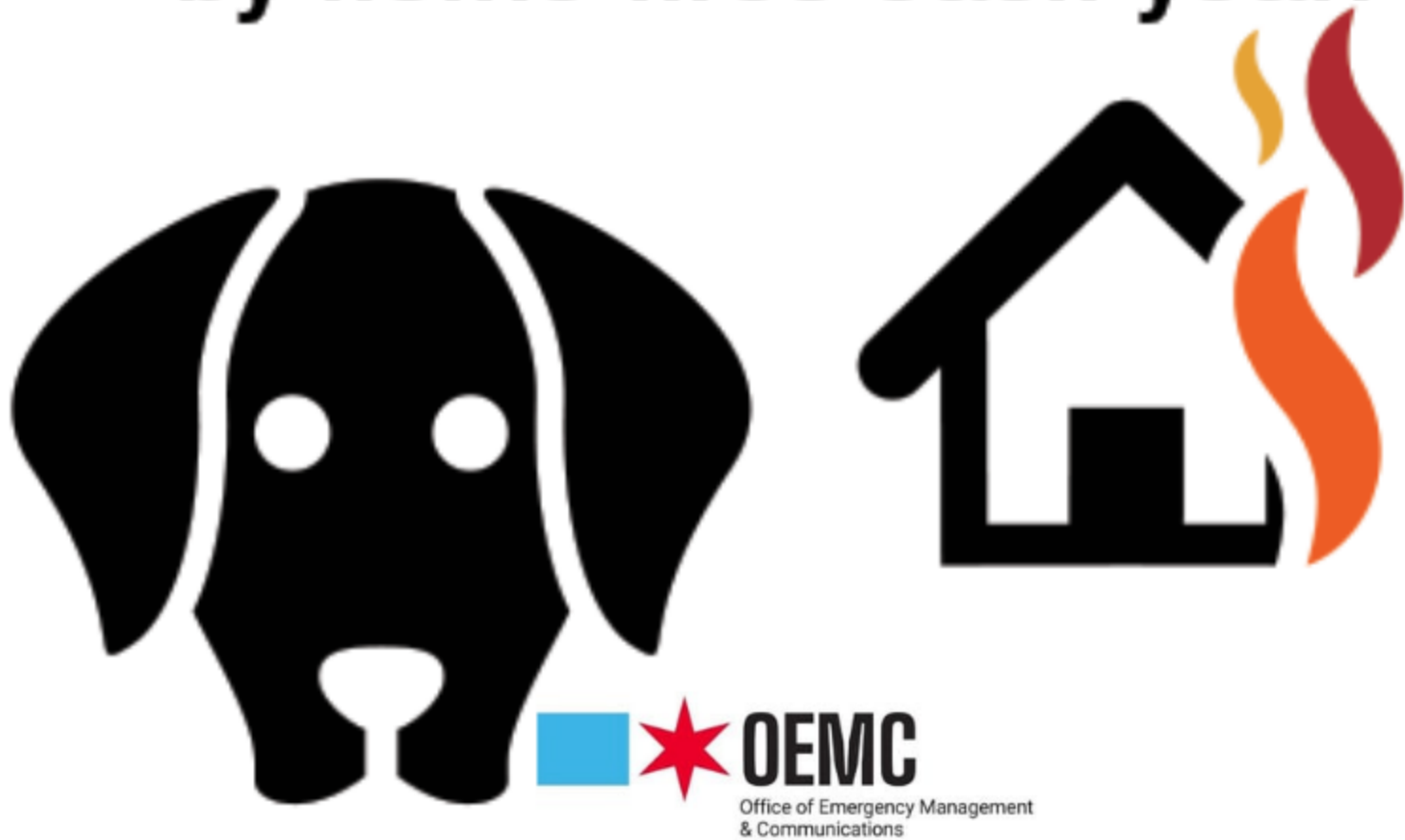
Prevent pets from touching stovetop controls, and be mindful of pets while in the kitchen.



**Smart911.com™**

*Because we want your pets to be safe.*

**500,000 pets are affected  
by home fires each year.**



**Protect your pets in an  
emergency with Smart911.**

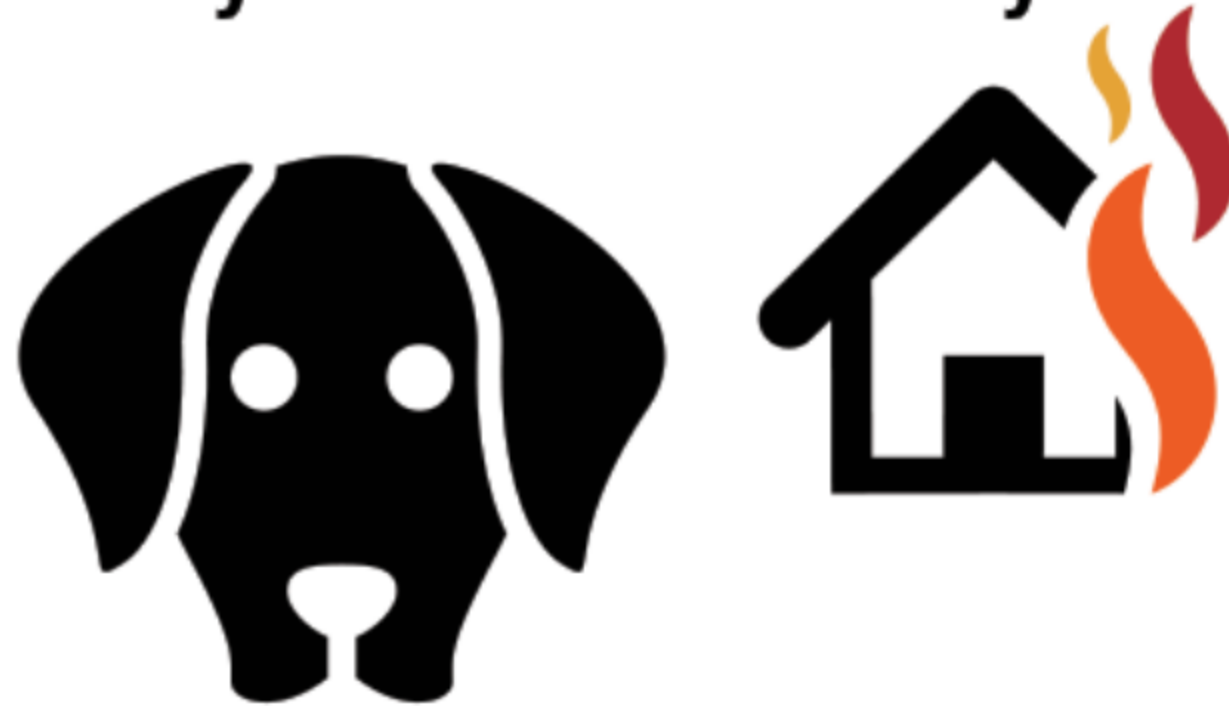


**Smart911.com™**

*Because we want your pets to be safe.*



**500,000 pets are affected  
by home fires each year.**



**Protect your pets in an  
emergency with Smart911.**



 **Smart911.com**<sup>TM</sup>  
*Because we want your pets to be safe.*



### Family

Include all members of your household, including their photos. You can also add all landlines and mobile numbers and who they belong to.



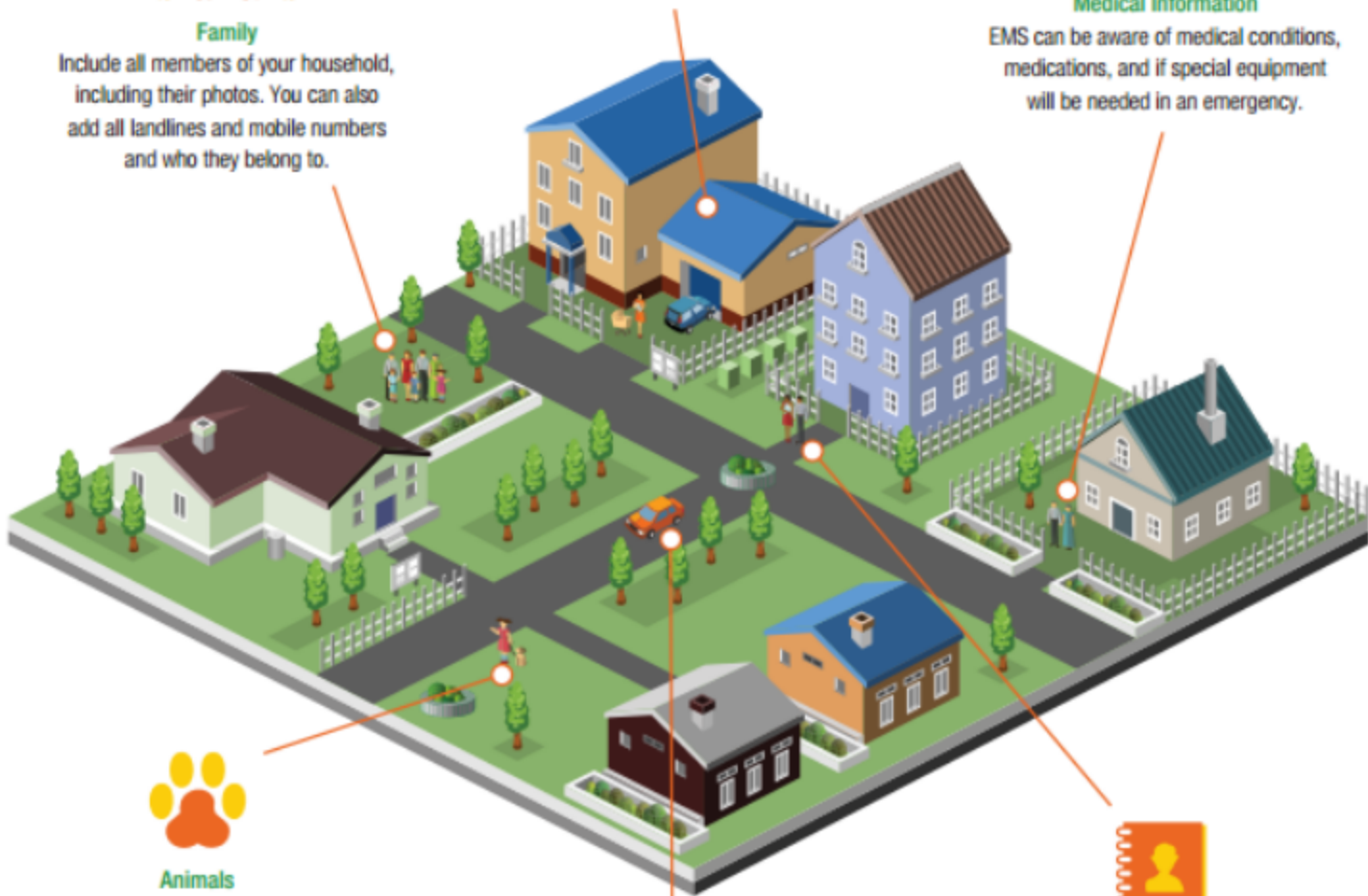
### Address Details

Let responders know how to access your home, bedrooms, utility shut offs, and if you live in a multi-unit building.



### Medical Information

EMS can be aware of medical conditions, medications, and if special equipment will be needed in an emergency.



### Animals

Add your pets, service animals, and livestock, including their names and vet information so responders are aware of them if they need to enter your home.



### Vehicles

Add details such as make, model, and license plate number in the event of an accident.



### Emergency Contacts

Include family members, friends, or neighbors who should be contacted in the event of an emergency.



### Family

Include all members of your household, including their photos. You can also add all landlines and mobile numbers and who they belong to.



### Address Details

Let responders know how to access your home, bedrooms, utility shut offs, and if you live in a multi-unit building.



### Medical Information

EMS can be aware of medical conditions, medications, and if special equipment will be needed in an emergency.



### Animals

Add your pets, service animals, and livestock, including their names and vet information so responders are aware of them if they need to enter your home.



### Vehicles

Add details such as make, model, and license plate number in the event of an accident.



### Emergency Contacts

Include family members, friends, or neighbors who should be contacted in the event of an emergency.





# PROTECT THE ONES YOU LOVE WITH SMART911®



Download the Smart911 App Today



**Smart911.com®**



# PROTECT THE ONES YOU LOVE

WITH SMART911<sup>®</sup>



 **Smart911.com<sup>®</sup>**