

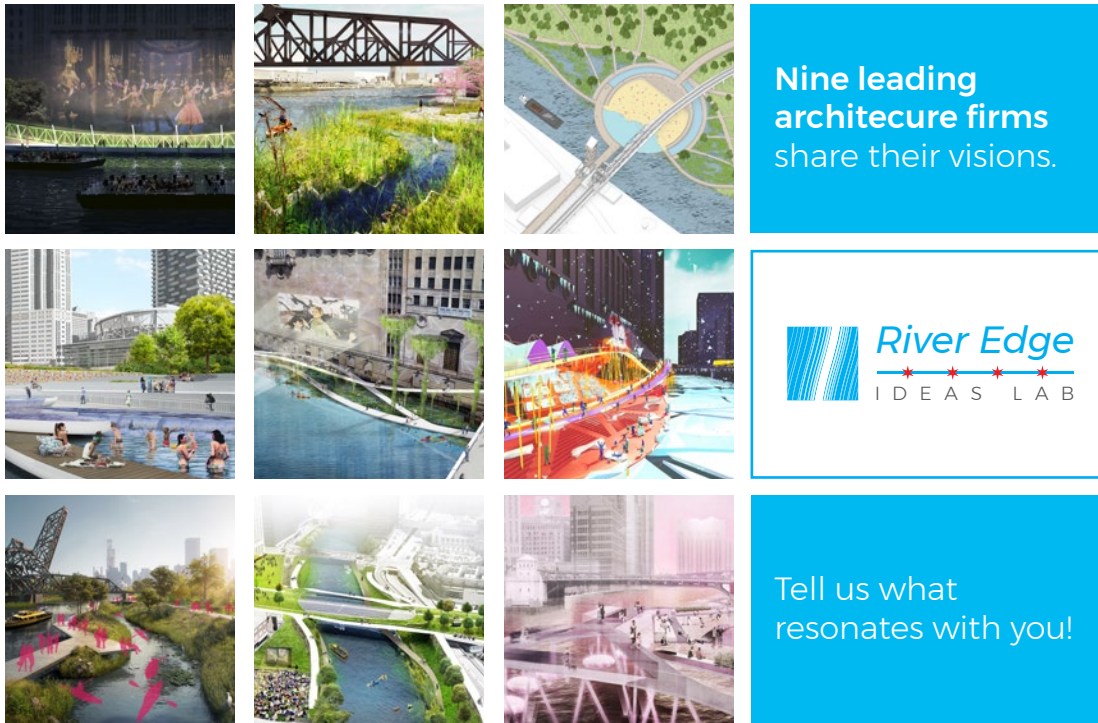
CHICAGO RIVER DESIGN GUIDELINES



STAKEHOLDER FEEDBACK SUMMARY

December 21, 2018





The Chicago River Design Guidelines is an update to the 2005 Chicago River Corridor Design Guidelines and Standards. The updates have been informed by the visions and public input received from the River Edge Ideas Lab exhibit which can be viewed at www.chiriverlab.com. An initiative of the Department of Planning and Development and Metropolitan Planning Council, the River Edge Ideas Lab engaged nine world-renowned architects and landscape architects to reimagine the city’s riverfront. The exhibit was displayed as part of the 2017-2018 Chicago Architecture Biennial, and was visited by over 11,500 people, with over 500 people providing feedback via an online survey and vision cards.

During the months of September to November in 2018, the City of Chicago’s Department of Planning and Development (DPD) met with several stakeholder group representatives to review the draft updates to the Chicago River Design Guidelines. Stakeholder representatives included multiple property owners, Metropolitan Planning Council, The Driehaus Foundation, Friends of the River, Active Transportation Alliance, Trust for Public Land, Sierra Club, Coalition for a Better Chinese American Community, Little Village Environmental Justice Organization, Chicago Community Trust, Chicago Park District, Forest Preserves of Cook County, U.S. Coast Guard, Metropolitan Water Reclamation District and city officials at CDOT and 2FM.

STAY INFORMED

This report summarizes the feedback received from stakeholders and how this feedback has been incorporated in the updated design guidelines document which has been posted online [here](#) for public review and comment prior to proceeding to the Chicago Plan Commission for plan adoption (https://www.cityofchicago.org/city/en/depts/dcd/supp_info/chicago-river-design-guidelines-update.html).

Please email DPD with any questions or comments, or if you would like to be added to our contact database: DPD@cityofchicago.org.

STAKEHOLDER FEEDBACK SUMMARY

Stakeholder feedback was collected over several meetings via group discussion, one-on-one conversations, and e-mail. Below are highlights of the feedback received and how the feedback was incorporated into the draft design guidelines document.

CHICAGO RIVER DESIGN GUIDELINES - OVERVIEW

Feedback	Design Guidelines Document
Allow more flexibility in material palette for place-making opportunities, and encourage sustainable products for materials	This comment has been incorporated in Chapter 3
Lighting should be sustainable and considerate of impact to wildlife. Include decorative lighting rather than just light pole fixtures, such as bollard or step lighting	This comment has been incorporated in Chapter 3
Are there limits on building height or FAR (Floor Area Ratio) along the riverfront?	Building height and FAR regulations are identified in the Zoning Ordinance
Require separated trails throughout the entire length of the river	The trail widths and standards incorporated into the updated Chicago River Design Guidelines (Chapter 3) vary per zone and are consistent with the widths of trails found within riverfront parks, the Forest Preserve, and the recently adopted North Branch Framework Plan.
Trail signage should be required	This comment has been incorporated in Chapter 3
The Chicago River signage should evoke multi-use trail	The Chicago River brand sign guidelines and standards will be published as a separate document from the Chicago River Design Guidelines.
Industrial uses should be held to higher standards	Additional requirements have been incorporated for both river-dependent and critical service uses in Chapter 2. DPD and CDPH are also continuing to coordinate regarding additional health-related regulations as part of a future update to the municipal code.
Provide incentives for riverfront improvements	For information on DPD's financial incentives, please go to: https://www.cityofchicago.org/city/en/depts/dcd/provdrs/ec_dev.html
Existing naturalized river edges should be retained	This comment has been incorporated in Chapter 3
Revise minimum zoning setback requirement from 30' to 60'	No zoning changes are proposed as part of the update to the Chicago River Design Guidelines
Require rehabilitation projects to be held to same standard as new riverfront developments	See above comment. Rehabilitation projects that trigger the Planned Development process, per Section 17-8-0509-A of the Zoning Ordinance, will need to meet the Chicago River Design Guidelines

STAKEHOLDER FEEDBACK SUMMARY (CONTINUED)

MENU OF IMPROVEMENTS

Feedback	Design Guidelines Document
Prioritize select nature menu options and river ecology in design guidelines	This comment has been incorporated in Chapter 4
Consider density of PDs when establishing number of menu items to be incorporated into project	This comment has been incorporated in Chapter 4
Do not focus Loop Zone projects for just connectivity theme menu items	This comment has been incorporated in Chapter 4
Change “Connectivity” theme to “Connectivity & Transportation”	The term “connectivity” includes the transportation network
Provide more minimum required menu items for medium sized projects rather than range of 5-10	The guidelines define medium sized PD projects as ranging from 1-3 blocks long, so the menu options also incorporates a range of expectations
Provide more information on each of the menu items, such as acreage for park, examples of stormwater management, increased accessibility, supportive multi-nodal connectivity infrastructure such as bicycle racks, docking facilities	This comment has been incorporated - each menu option includes an explanation of design goals and criteria, best practice strategies, and case study examples
Provide more transportation-related menu options such as access to and from the street, and bike-supported infrastructure	This comment has been incorporated in Chapter 4
Interpretative signage is an important element for visitors of a riverfront development	This comment has been incorporated in Chapter 4



This page intentionally left blank