

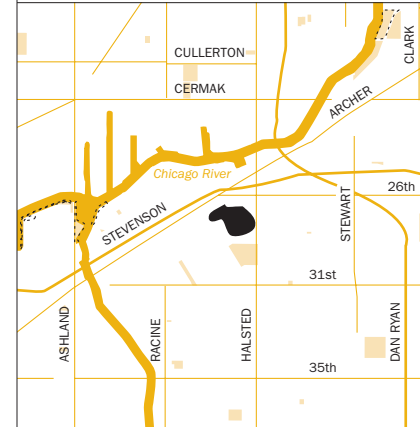
Stearns Quarry was created by a quarry operation that functioned here for the first half of the 20th century. Lime from the quarry was used to make cement which was used for construction throughout Chicago.

In the 1970s, Stearns Quarry was sold to the City of Chicago to use as a landfill for construction waste. It was never used as a sanitary landfill, but contains the waste from street improvements and other projects. By the end of the 20th century it was time to figure out a plan for closing the landfill, and the idea for creating a park emerged. Stearns Quarry is located adjacent to McGuane Park, and is considered an expansion of that site.

Work on the new park is underway. An innovative landscape design for the site calls for keeping the pond **1** in the northeast corner of the site intact, and providing access to the quarry walls, where fossils can be found and interesting geological history can be interpreted. Natural habitat improvements will also include native grasses and wildflower plantings on the mound left from the landfill. The southwestern portion of the site will be a combination of passive and active recreational uses.

STEARNS QUARRY

Site No 78

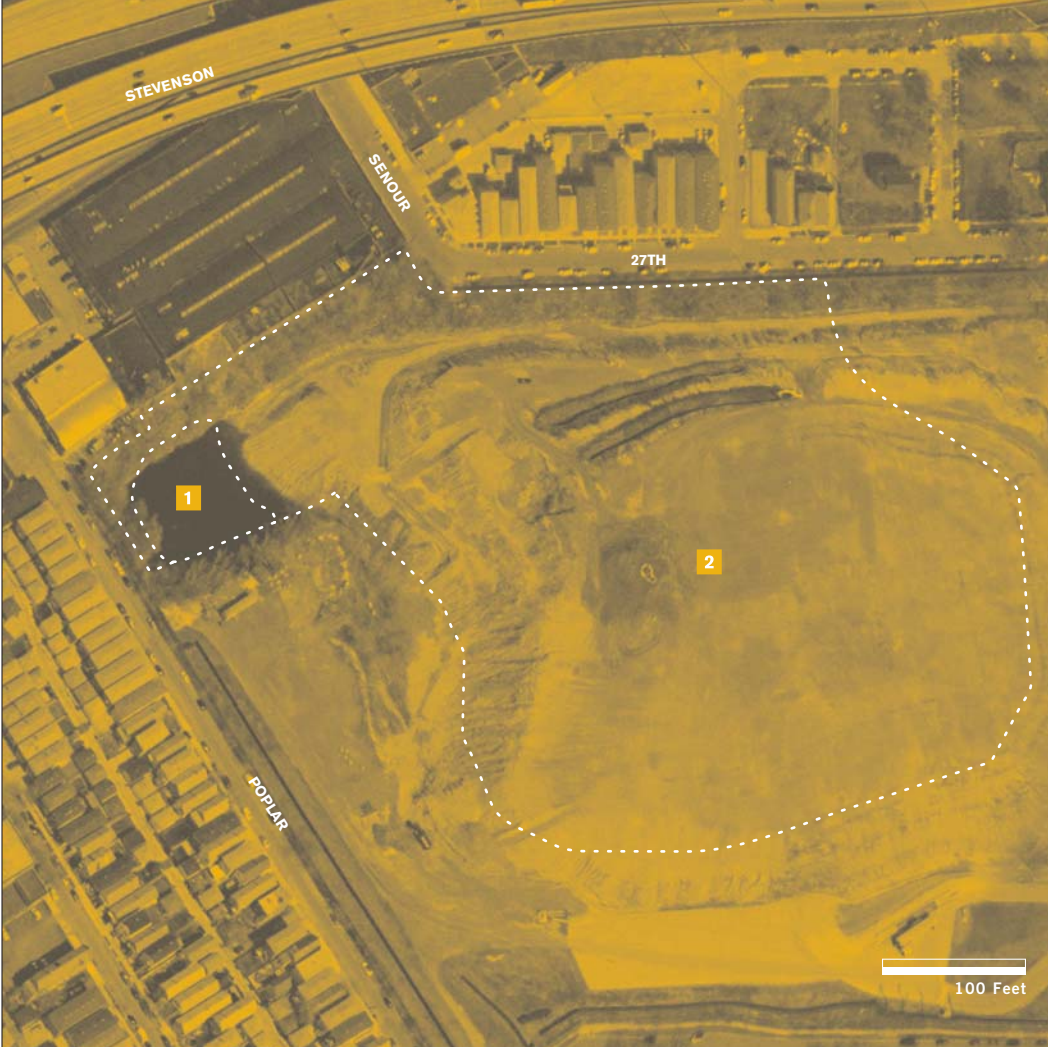


2800 SOUTH / 900 WEST



Stearns Quarry

N: 78



ADDRESS 2800 S Halsted St
 OWNER City of Chicago
 ACREAGE 14.16

HABITATS
1 Wetland
2 Potential Habitat

DIRECTIONS Currently the site can not be visited, and fences block the view from the street.

Stearns Quarry

Chicago Habitat Directory 2005

Page 119