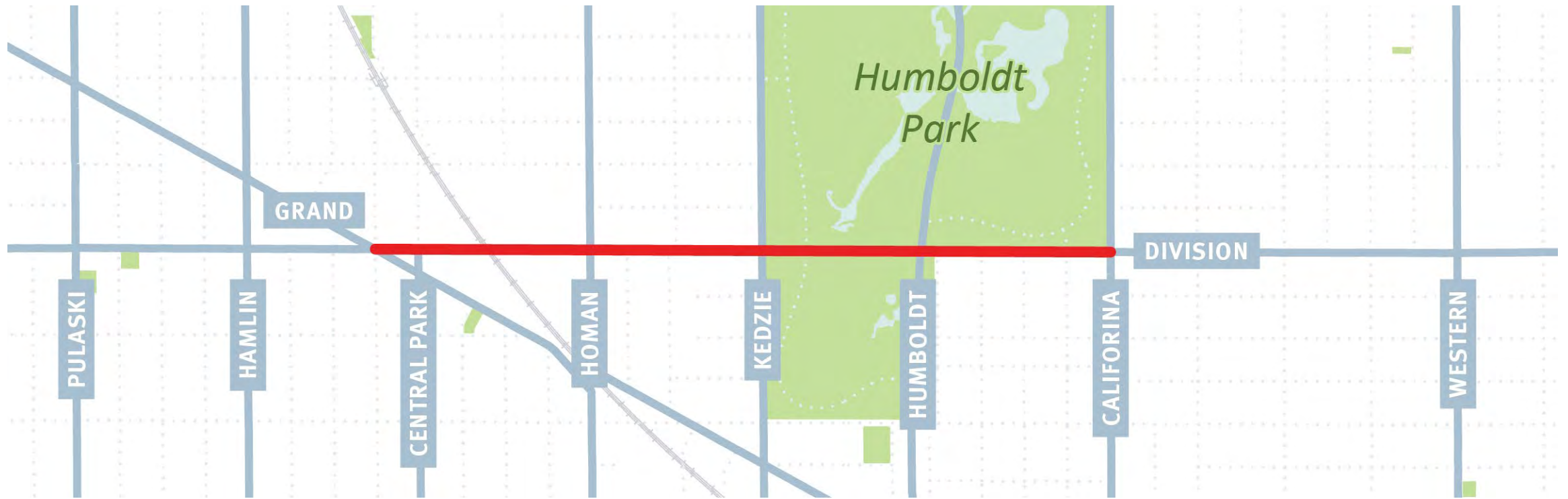


# Division Street

Complete Street Improvements  
Grand to California



# Complete Streets Improvements Coming to Division between Grand and California



# Complete Streets Improvements Coming to Division between Grand and California

- ▶ Division Street has a history of dangerous vehicle speeds, crashes, and safety concerns from the neighborhood
- ▶ Division Street provides a critical connection that spans the city, and many people travel Division each day by bus, bike, and foot
- ▶ Changes are being implemented to address safety concerns, better organize the street, and improve neighborhood access for all modes of transportation

# What's Coming to Division

## Right-Sized Travel Lanes



Encourage safer and more appropriate travel speeds

## Shorter Pedestrian Crossings



To reduce exposure to cars and make crossing the street safer

## New Crosswalks through the Park



Providing better access to Humboldt Park

# What's Coming to Division

## Protected Bike Lanes



To separate people biking from people driving

## Improved Bus Stops



To improve operations and provide more space for transit users

## Better Organization of the Street



Clearly delineated space for all users of the street

# Changes to On-Street Parking

Parking will remain on both sides of the street between Humboldt and California

Parking will be consolidated to one side of the street between Homan and Kedzie

Parking will be restricted west of Homan

- ▶ No changes will be made to parking on sides streets in the neighborhood

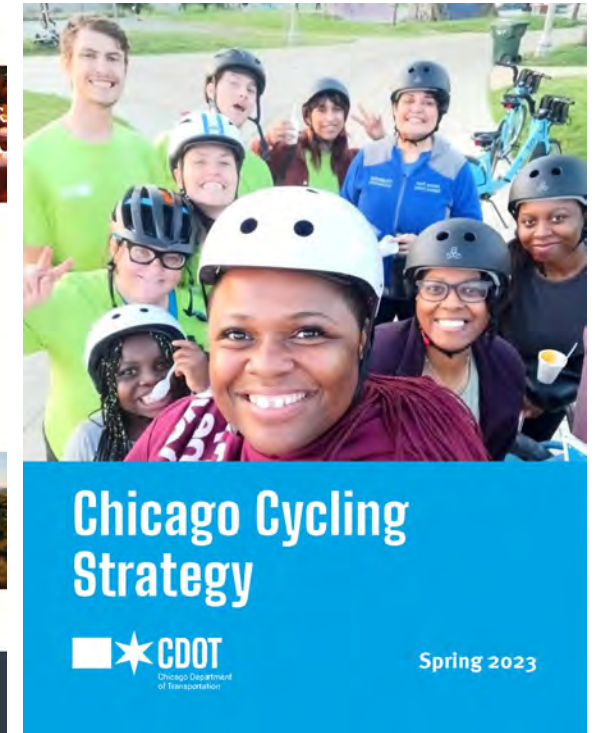
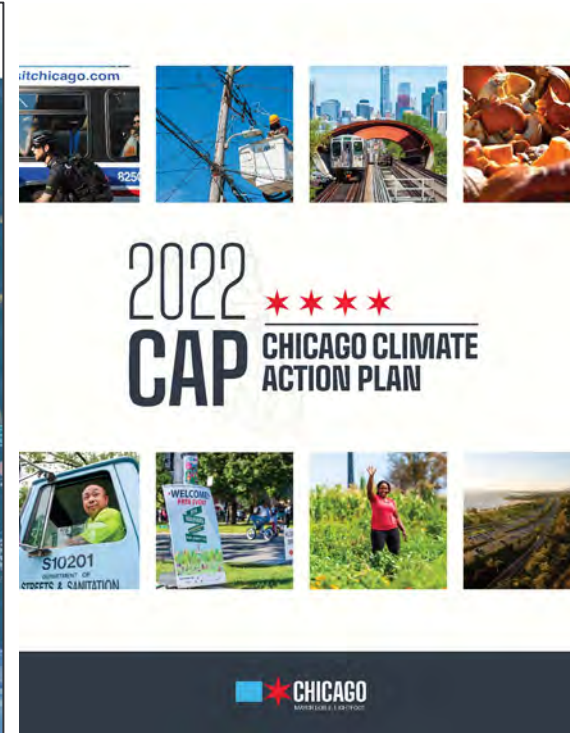
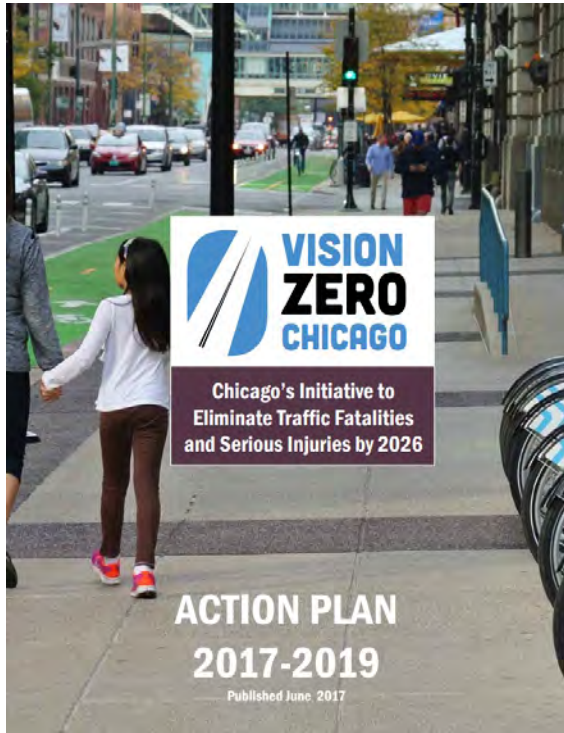
# Complete Streets Improve the Safety for Everyone, Especially Pedestrians

## Milwaukee Avenue Safety Project

- ▶ Crashes decreased for all modes
- ▶ Injury crashes cut in half
- ▶ Lower vehicle speeds



# Recent City Policies and Plans Prioritize Traffic Safety and Multimodal Transportation





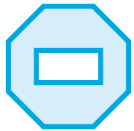
# Why Are Changes Happening? Making Division Safer and More Comfortable for Everyone.



Humboldt Park is one of eight High Crash Community Areas in Chicago



People are driving at deadly speeds every day



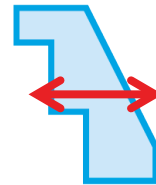
History of crashes, including those resulting in fatalities & serious injuries



Challenges crossing the street for people walking



People walking and biking are disproportionately harmed in crashes



Division is an important route connecting people from one end of Chicago to the other

# Humboldt Park is One of Eight High Crash Community Areas in Chicago

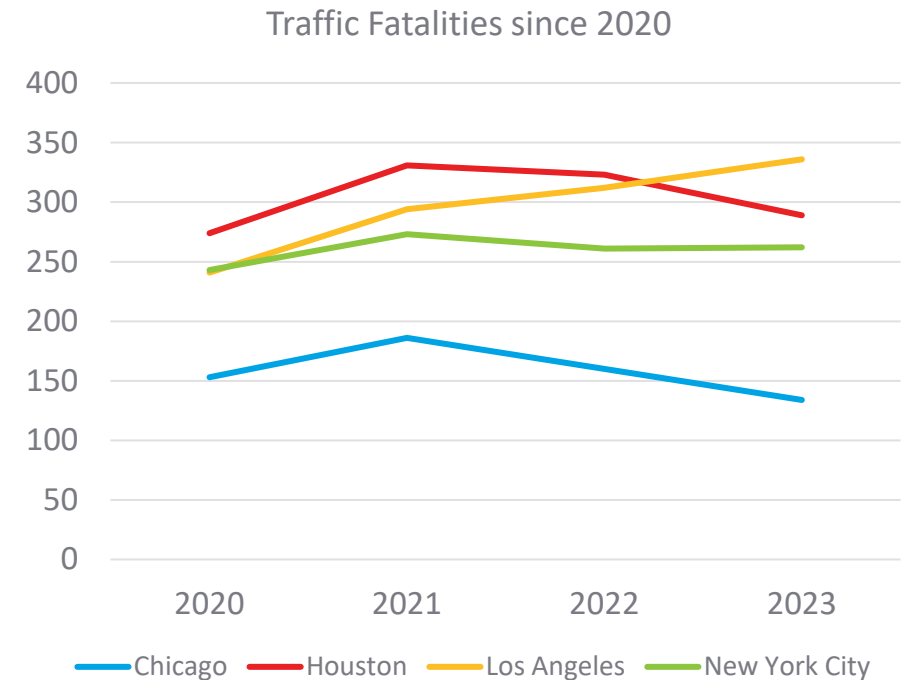
**Each year in Humboldt Park there are...**

- ▶ 4,000 traffic crashes (67% higher than average)
- ▶ 620 people injured (double the average)
- ▶ 5 people killed in traffic crashes (140% higher than average)

**2nd highest number of fatalities of any community area in Chicago**

# Complete Streets Infrastructure Makes Our Streets Safer and Can Save Lives

- ▶ Traffic injuries and fatalities rose after Covid-19 in Chicago
- ▶ This corresponds to nationwide trends in rising traffic crashes
- ▶ Chicago saw a 30% decrease in traffic fatalities in from 2021 to 2023
- ▶ Corresponds to the implementation of more complete streets improvements than ever before



# History of Crashes on Division, Including Those Resulting in Fatalities & Serious Injuries ('18-'22)

**652**

Total crashes over 5 years

**Two  
Fatalities**

Including one person  
walking

**161**

People injured while  
traveling on Division

# People are Driving at Deadly Speeds along Division Every Day

# 2,200

Per day driving faster than the 30 MPH speed limit



Top speed **over 60 MPH**

# The Likelihood of a Person Being Killed Increases as Vehicle Speeds Go Up



**20 MPH**



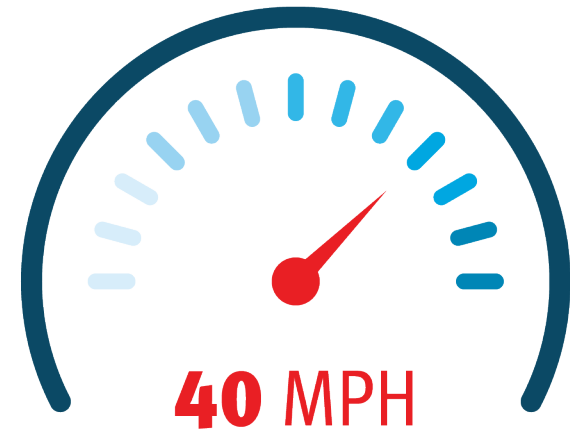
**10%** Risk of Death or Severe Injury



**30 MPH**



**40%** Risk of Death or Severe Injury



**40 MPH**



**80%** Risk of Death or Severe Injury

# People Walking and Biking are Disproportionately Harmed in Crashes on Division

People walking & biking make up:

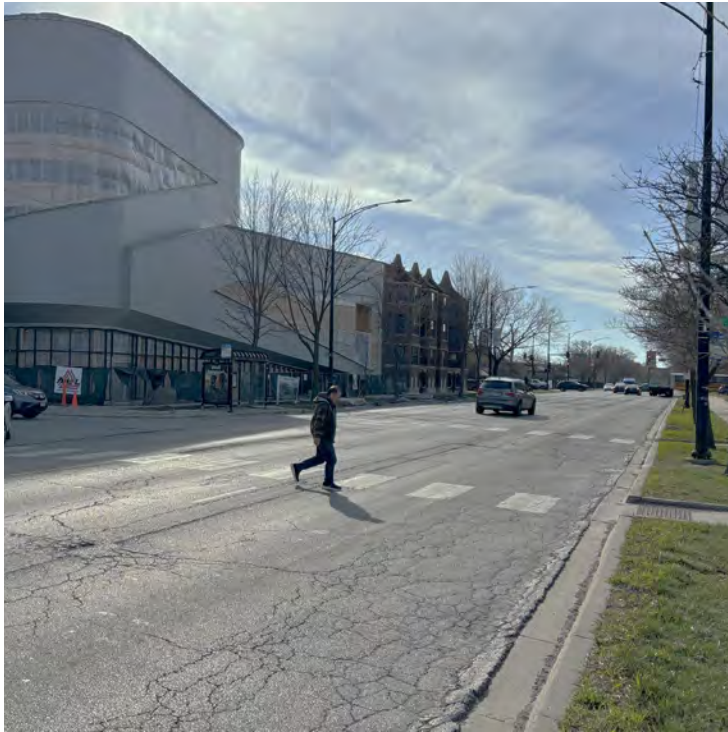
**1/3**

Of all injury producing crashes

**100%**

Of crashes involving people walking or biking result in an injury

# Challenges Crossing the Street for People Walking Along Division





# Biking is Growing Faster in Chicago than any other Big City in the Country

**Since 2020 biking is up 120% throughout Chicago**

- ▶ Chicago saw the highest growth among the 10 largest cities in the US
- ▶ Biking in Humboldt Park has increased at a similar rate

# Division is both an Important Citywide Connection and Local Connection



# These Changes...

- ▶ Promote safer access to Humboldt Park
- ▶ Focus on slowing traffic to safe speeds to ensure the safety of everyone using the street
- ▶ Prioritize the safety of the most vulnerable users of the street, people walking and biking, especially children and families
- ▶ Respond to traffic safety concerns from the neighborhood

# How Will This Benefit the Neighborhood?

- ▶ **Safer travel speeds and higher comfort** for everyone living, working, and visiting Division
- ▶ **Improved pedestrian amenities** to improve safety for people walking along and across Division
- ▶ **New pedestrian crossing** between Luis Munoz Marin Drive and Humboldt Drive
- ▶ **Shorter distances** for people to walk across the street
- ▶ **Improved access to Humboldt Park and local businesses** for everyone
- ▶ **Protected bike lanes** to separate people biking from people driving
- ▶ **Improved bus stops** to improve bus operations and create more space for people to wait for the bus
- ▶ **Street resurfacing** between Kedzie and California through Humboldt Park

# Project Schedule

Work will not begin until after Puerto Rican People's Day Parade and July 4th

# Thank You

[CompleteStreets@cityofchicago.org](mailto:CompleteStreets@cityofchicago.org)

