

# WHEN CAN I GET A COVID-19 VACCINE IN CHICAGO?



**PROTECT  
CHICAGO** ★

Get vaccinated as soon as it's your turn. Protect yourself. Protect Chicago.

**WE ARE HERE**

## PHASE 1A

**BEGIN:**  
DECEMBER 15, 2020

**Healthcare Workers**

Long-term care facility residents and staff

## PHASE 1B

**BEGIN:**  
JANUARY 25, 2021

**Frontline Essential**

Non-healthcare residential settings  
Chicagoans age 65 and older

## PHASE 1C

**TENTATIVELY BEGIN:**  
MARCH 29, 2021

**All other essential workers**

Chicagoans age 16-64 with underlying medical conditions

## PHASE 2

**TENTATIVELY BEGIN:**  
MAY 31, 2021

**All Chicagoans age 16 and older**

Learn how and when you can get a COVID-19 vaccine in Chicago at [CHICAGO.GOV/COVIDVAX](https://chicago.gov/covidvax)

# COVID-19 VACCINE PHASES AND PLANNING IN CHICAGO

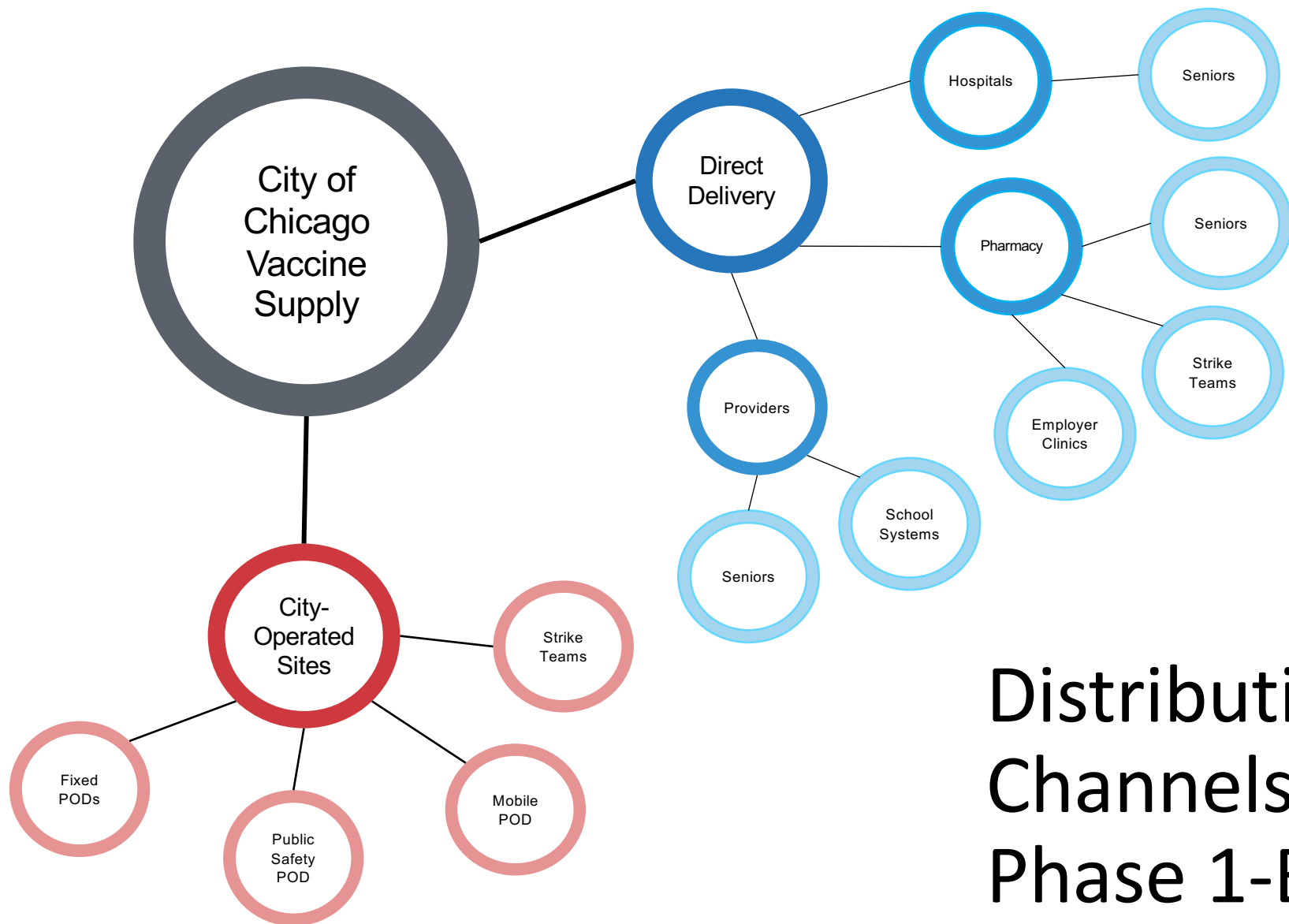


**PROTECT  
CHICAGO** ★

There will be a phased roll-out of the COVID-19 vaccine in Chicago with a very limited supply at the beginning, so certain groups will be prioritized. Everyone is encouraged to get vaccinated as soon as it's their turn. Supplies will increase over time and all adults will be able to get vaccinated later in 2021. Once a vaccination phase begins, people in that phase are eligible to receive the COVID-19 vaccine indefinitely. Tentative dates are dependent on vaccine supply.

PHASE	GOAL: Prevent COVID-19 hospitalizations and deaths	GOAL: Preserve services essential to functioning of society and prevent COVID-19 outbreaks
<b>1A</b> Begin on December 15, 2020 (Most vaccinated in January)	<ul style="list-style-type: none"> <li>Phase opens to whole group, with efforts to prioritize by COVID-19 risk in order below</li> <li>Most vaccinated in residential and healthcare settings (e.g. clinics, hospitals, pharmacies)</li> </ul>	<ul style="list-style-type: none"> <li>Phase opens to whole group, with efforts to prioritize by COVID-19 risk in order below</li> <li>Most vaccinated in employer-based settings</li> </ul>
<b>1B</b> Begin on January 25, 2021 (Most vaccinated in February and March)	<p><b>Long-term care and other residential healthcare facilities</b></p> <ul style="list-style-type: none"> <li>Skilled Nursing Facilities</li> <li>Assisted Living Facilities</li> <li>Behavioral health residential facilities</li> <li>Developmentally disabled residential facilities</li> </ul> <p><b>Chicagoans age 65 and older</b></p> <ul style="list-style-type: none"> <li>Chicagoans age 75 and older</li> <li>Chicagoans age 65-74 with underlying medical conditions</li> <li>All Chicagoans age 65 and older</li> </ul> <p><b>Non-healthcare residential settings</b></p> <ul style="list-style-type: none"> <li>Correctional settings</li> <li>Homeless shelters</li> <li>Other residential settings with local outbreaks</li> </ul>	<p><b>Healthcare workers</b></p> <ul style="list-style-type: none"> <li>Hospital-based</li> <li>Non-hospital based (e.g. doctors' offices, dentists' offices, outpatient clinics, laboratories, pharmacies, home health)</li> <li>Community-based (e.g. <i>Protect Chicago</i> outreach)</li> </ul> <p><b>Frontline essential workers</b></p> <ul style="list-style-type: none"> <li>Correctional workers and first responders</li> <li>Grocery store workers and manufacturing/factory settings with outbreaks</li> <li>Daycare, K-12 and early education workers</li> <li>Public transit, other manufacturing, and agriculture workers</li> <li>Continuity of government and postal workers</li> </ul>
<b>1C</b> Tentatively begin on March 29, 2021 (Most vaccinated in April and May)	<b>Chicagoans age 16-64 with underlying medical conditions</b>	<b>All other essential workers</b>
<b>2</b> Tentatively begin on May 31, 2021	<b>All Chicagoans age 16* and older</b>	

\*As vaccine is authorized for younger children, they will be added to the plan



## Distribution Channels for Phase 1-B