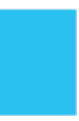




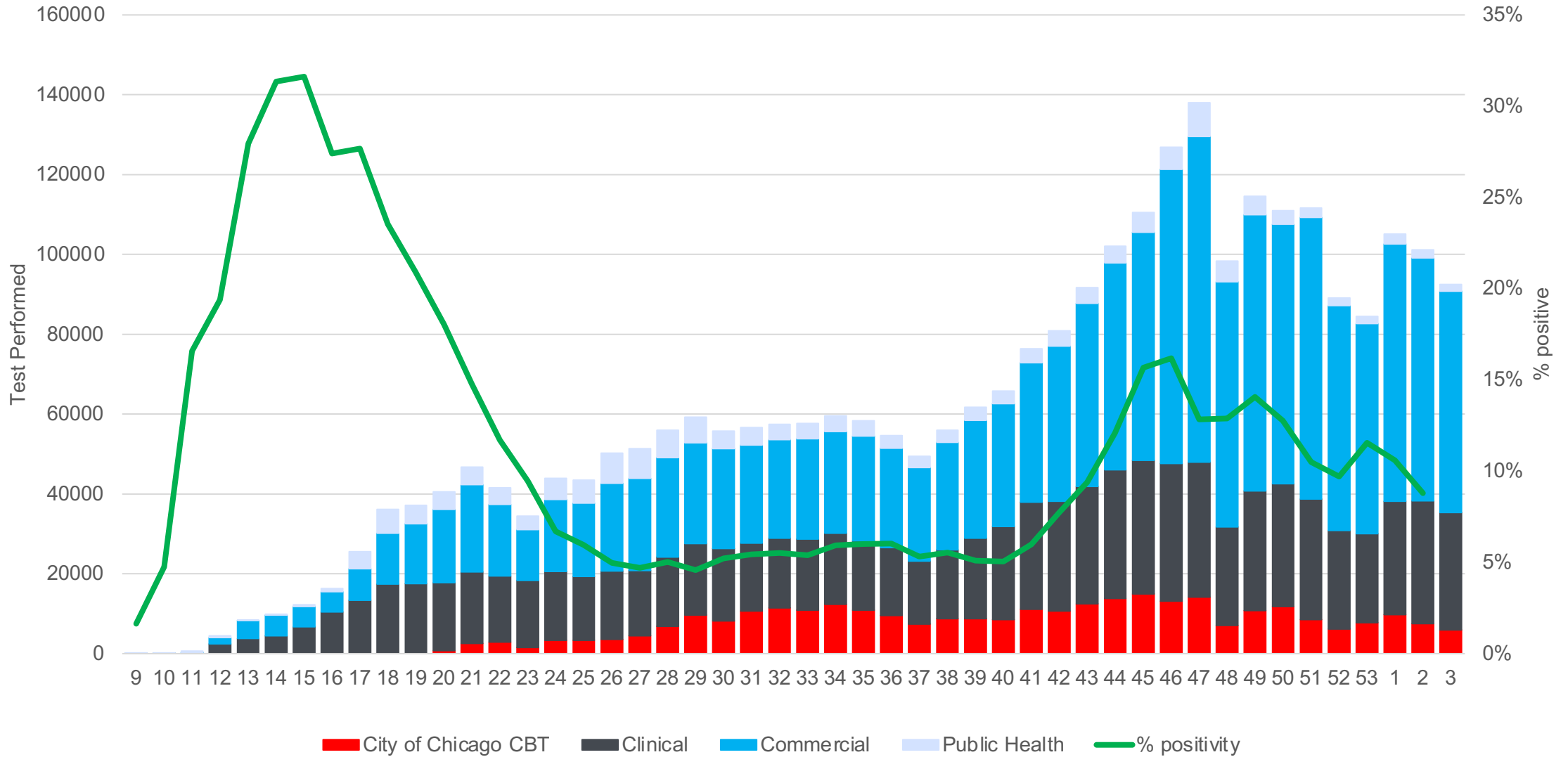
COVID-19 Response Bureau Testing and Laboratory-Based Surveillance

January 29, 2021



Every week, we track the volume of tests performed across the City, as well as what type of laboratory is performing those tests. While testing capacity remains high, demand has decreased in recent weeks. Testing demand across the City closely mirrors disease incidence, such that when fewer cases of COVID-19 are detected, fewer people seek COVID-19 testing.

Testing volume by reporting laboratories



MMWR 1-4 = January
 MMWR 5-8 = February
 MMWR 9-13 = March
 MMWR 14-18 = April
 MMWR 19-22 = May
 MMWR 23-27 = June
 MMWR 28-31 = July
 MMWR 32-36 = August
 MMWR 37-40 = September
 MMWR 41-44 = October
 MMWR 45-48 = November
 MMWR 49-53 = December



City of Chicago Community-Based Testing Sites (CBTS) represent just some of over 5,000 providers performing COVID-19 testing in Chicago. CBTS aim to serve the people who need it most, especially those underrepresented in testing from other clinical providers and those from demographic groups and geographic areas hardest hit by COVID-19.

We closely monitor the demographics (e.g., age, race, ethnicity) of individuals using our community-based testing sites, and adjust our targeting as needed to reach the communities that need it most.



Volume of test by race and ethnicity of individuals using CDPH Community Based Testing Sites last week (January 17, 2020 - January 23, 2021)

