

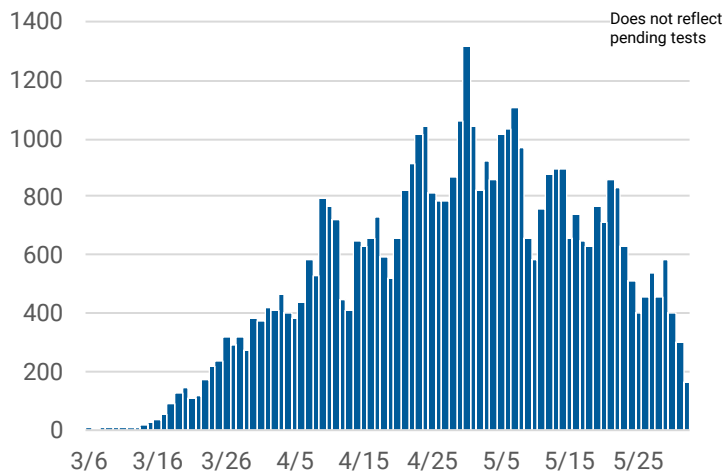


# CHICAGO COVID-19 UPDATE

June 2, 2020

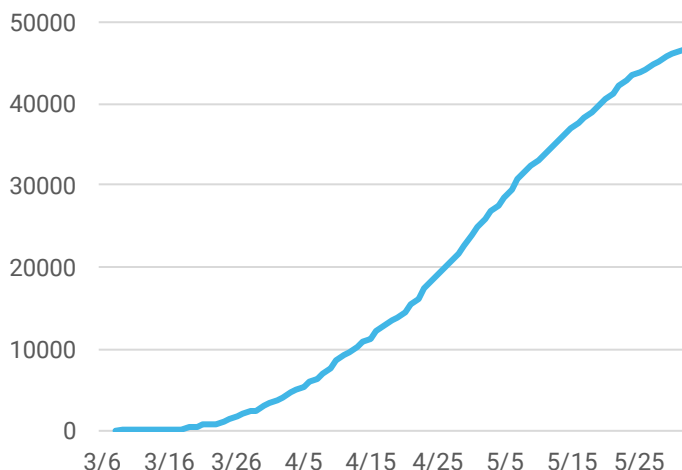
**There are 46,739 cases of COVID-19 and 2,148 deaths among Chicago residents as of June 2, 2020. This is an increase of 827 cases and 13 deaths since yesterday.**

Confirmed daily COVID-19 cases



Daily and cumulative coronavirus 2019 (COVID-19) cases reported for Chicago residents with known laboratory report date. Results for several previous days are updated each day. Note, there was one case of COVID-19 reported in January 2020 that is not included in the daily counts.

Confirmed cumulative COVID-19 cases



## COVID-19 Morbidity and mortality by geography

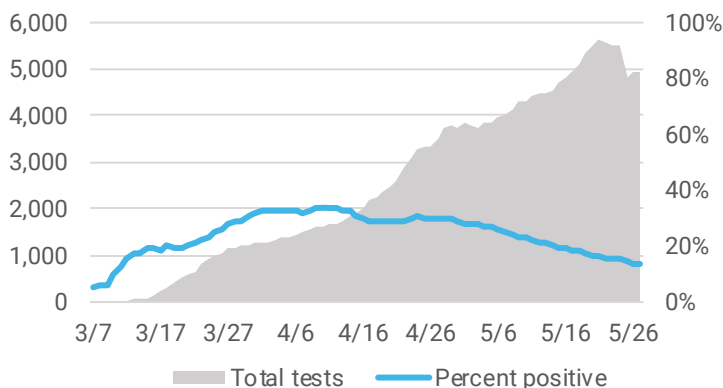
GEOGRAPHY	CASES <sup>1</sup>	DEATHS
<b>Chicago</b>	<b>46,739</b>	<b>2,148</b>
Illinois ( <a href="#">IDPH link</a> )	122,848	5,525
U.S. ( <a href="#">CDC link</a> )	1,802,470	105,157
World ( <a href="#">WHO link</a> )	6,194,533	376,320

<sup>1</sup>Does not include persons with pending COVID-19 tests or persons with COVID-19 related illness who have not been tested.

**As of June 2, 2020, there have been 237,719 tests performed. The 7-day average is 4,953 tests per day, with a percent positivity of 13.6%.**

Average daily COVID-19 testing

Number of tests performed and percentage of tests that were positive averaged over 7 days.



Molecular tests performed at state and private laboratories with known specimen collection date. Percent positivity is based on individuals tested. Tests performed between Jan 21 and Feb 29, 2020 are not included in graph. CDPH may not receive all non-positive results.

## COVID-19 Case characteristics for Chicago residents

CHARACTERISTIC	NUMBER	% TOTAL CASES <sup>1</sup>	RATE PER 100,000
<b>Chicago</b>	<b>46,739</b>	<b>100%</b>	<b>1,727.2</b>
<b>Age</b>			
0-17	2,016	4.3%	367.2
18-29	8,363	17.9%	1,512.5
30-39	8,292	17.7%	1,817.1
40-49	8,592	18.4%	2,553.7
50-59	8,088	17.3%	2,584.3
60-69	5,761	12.3%	2,190.6
70+	5,601	12.0%	2,380.2
Under investigation	26	0.1%	-
<b>Gender</b>			
Female	22,988	49.2%	1,658.5
Male	22,742	48.7%	1,723.0
Under investigation	1,009	2.1%	-
<b>Race-ethnicity<sup>2</sup></b>			
Latinx	17,007	47.8%	2,189.8
Black, non-Latinx	10,634	29.9%	1,355.9
White, non-Latinx	5,210	14.6%	578.9
Asian, non-Latinx	1,011	2.8%	562.2
Other, non-Latinx	1,738	4.9%	1,454.8
Under investigation	11,139	23.8%	-

<sup>2</sup>Race-ethnicity percentage is calculated among those with known race-ethnicity as reported by the medical provider.

## COVID-19 Death characteristics for Chicago residents

CHARACTERISTIC	DEATHS	% TOTAL DEATHS	% DEATHS WITHIN GROUP	RATE PER 100,000 POP
<b>Chicago</b>	<b>2,148</b>	<b>100%</b>	<b>4.6%</b>	<b>79.4</b>
<b>Age</b>				
0-17	1	0.0%	0.0%	0.2
18-29	14	0.7%	0.2%	2.5
30-39	51	2.4%	0.6%	11.2
40-49	108	5.0%	1.3%	32.1
50-59	234	10.9%	2.9%	74.8
60-69	459	21.4%	8.0%	174.5
70+	1,281	59.6%	22.9%	544.4
<b>Gender</b>				
Female	853	39.7%	3.7%	61.5
Male	1,294	60.2%	5.7%	98.0
Under investigation	1	0.1%	0.1%	-
<b>Race-ethnicity<sup>2</sup></b>				
Latinx	641	30.0%	3.8%	82.5
Black, non-Latinx	951	44.5%	8.9%	121.3
White, non-Latinx	423	19.8%	8.1%	47.0
Asian, non-Latinx	103	4.8%	10.2%	57.3
Other, non-Latinx	17	0.9%	1.0%	14.2
Under investigation	13	0.6%	0.1%	-

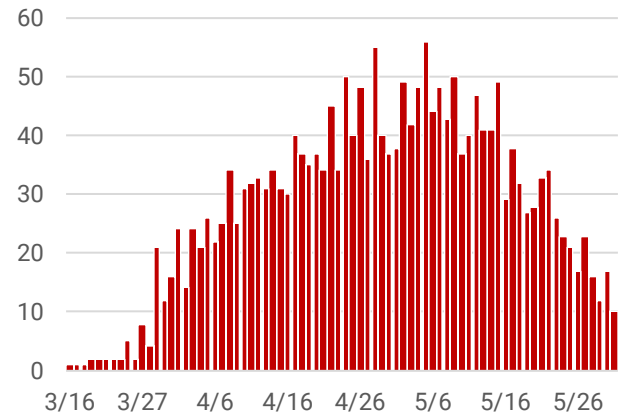
<sup>2</sup>Race-ethnicity percentage is calculated among those with known race-ethnicity as reported by the medical provider.

## Underlying chronic conditions among Chicago residents who died from COVID-19

CHARACTERISTIC	NUMBER	% OF KNOWN
<b>Known medical history</b>	<b>2,097</b>	<b>-</b>
Underlying chronic conditions <sup>3</sup>	1,933	92.2%
No underlying chronic conditions	164	7.8%
Under investigation	51	-

<sup>3</sup>Cases with at least one underlying chronic condition. Most common underlying conditions include diabetes, hypertension, and lung disease.

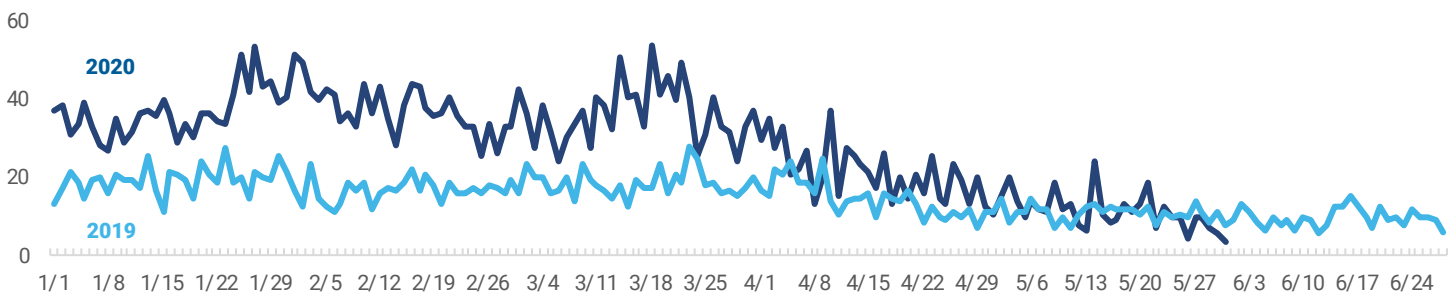
## Daily COVID-19 deaths



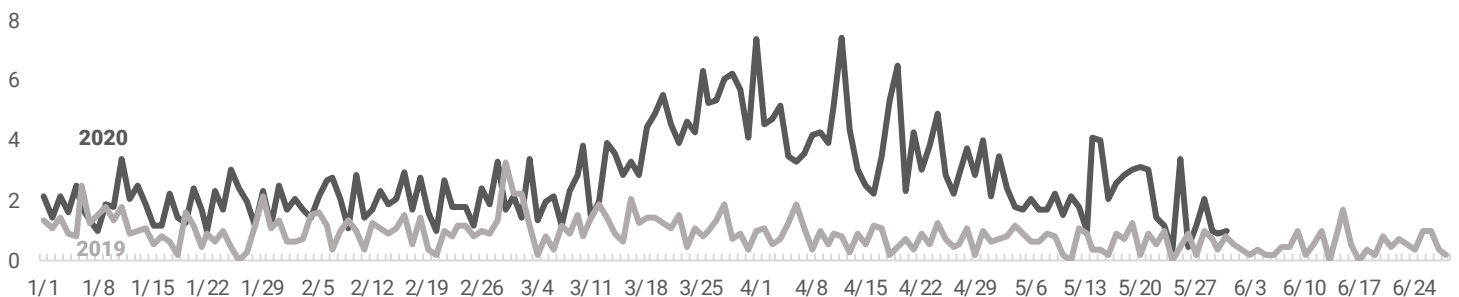
Chicago resident coronavirus 2019 (COVID-19) cases who have died, by date of death. Results for several previous days are updated each day.

COVID-19 symptoms are similar to those of influenza, so monitoring influenza-like illness (ILI) may also help identify COVID-19. ILI activity in 2020 that is higher than what was experienced in 2019 could indicate the presence of COVID-19 in the community.

## Percent of daily emergency department (ED) visits due to influenza-like illness in Chicago among all age groups, 2020 vs. 2019



## Percent of daily emergency department (ED) visits due to influenza-like illness in Chicago among persons aged 65+, 2020 vs. 2019



Percent of daily emergency department visits attributed to influenza-like illness for Chicago zip codes based on chief complaint submitted to ESSENCE.