

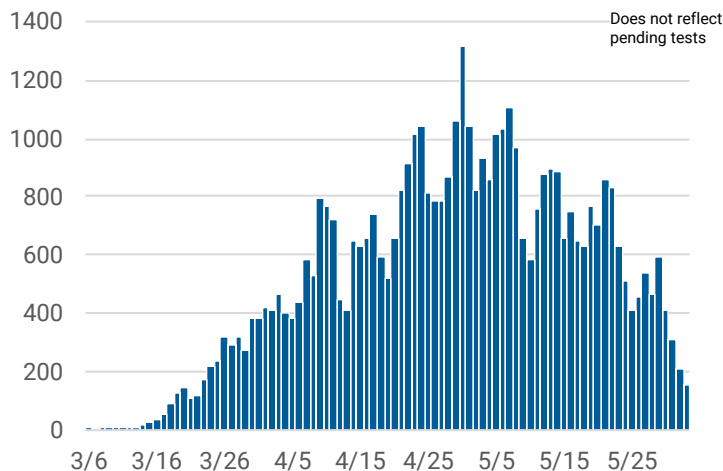


CHICAGO COVID-19 UPDATE

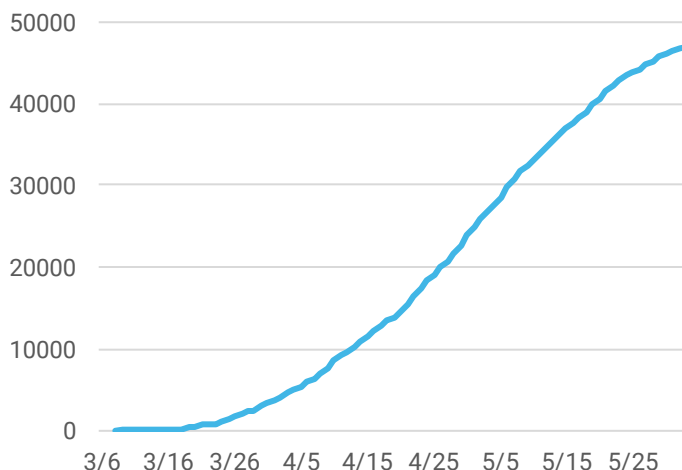
June 3, 2020

There are 46,979 cases of COVID-19 and 2,188 deaths among Chicago residents as of June 3, 2020. This is an increase of 240 cases and 40 deaths since yesterday.

Confirmed daily COVID-19 cases



Confirmed cumulative COVID-19 cases



Daily and cumulative coronavirus 2019 (COVID-19) cases reported for Chicago residents with known laboratory report date. Results for several previous days are updated each day. Note, there was one case of COVID-19 reported in January 2020 that is not included in the daily counts.

COVID-19 Morbidity and mortality by geography

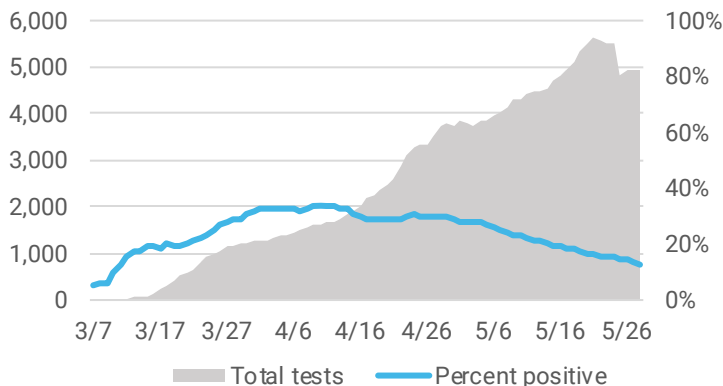
GEOGRAPHY	CASES ¹	DEATHS
Chicago	46,979	2,188
Illinois (IDPH link)	123,830	5,621
U.S. (CDC link)	1,827,425	106,202
World (WHO link)	6,287,771	379,941

¹Does not include persons with pending COVID-19 tests or persons with COVID-19 related illness who have not been tested.

As of June 3, 2020, there have been 240,910 tests performed. The 7-day average is 4,919 tests per day, with a percent positivity of 12.7%.

Average daily COVID-19 testing

Number of tests performed and percentage of tests that were positive averaged over 7 days.



Molecular tests performed at state and private laboratories with known specimen collection date. Percent positivity is based on individuals tested. Tests performed between Jan 21 and Feb 29, 2020 are not included in graph. CDPH may not receive all non-positive results.

COVID-19 Case characteristics for Chicago residents

CHARACTERISTIC	NUMBER	% TOTAL CASES ¹	RATE PER 100,000
Chicago	46,979	100%	1,736.1
Age			
0-17	2,031	4.3%	369.9
18-29	8,402	17.9%	1,519.5
30-39	8,326	17.7%	1,824.6
40-49	8,635	18.4%	2,566.4
50-59	8,128	17.3%	2,597.1
60-69	5,797	12.3%	2,204.3
70+	5,679	12.0%	2,413.3
Under investigation	26	0.1%	-
Gender			
Female	23,126	49.2%	1,668.4
Male	22,853	48.6%	1,731.5
Under investigation	1,000	2.2%	-
Race-ethnicity²			
Latinx	17,125	47.8%	2,205.0
Black, non-Latinx	10,721	29.9%	1,367.0
White, non-Latinx	5,232	14.6%	581.3
Asian, non-Latinx	1,025	2.9%	569.9
Other, non-Latinx	1,751	4.8%	1,465.7
Under investigation	11,125	23.7%	-

²Race-ethnicity percentage is calculated among those with known race-ethnicity as reported by the medical provider.

COVID-19 Death characteristics for Chicago residents

CHARACTERISTIC	DEATHS	% TOTAL DEATHS	% DEATHS WITHIN GROUP	RATE PER 100,000 POP
Chicago	2,188	100%	4.7%	80.9
Age				
0-17	1	0.0%	0.0%	0.2
18-29	14	0.6%	0.2%	2.5
30-39	51	2.3%	0.6%	11.2
40-49	112	5.1%	1.3%	33.3
50-59	238	10.9%	2.9%	76.0
60-69	466	21.3%	8.0%	177.2
70+	1,306	59.7%	23.0%	555.0
Gender				
Female	872	39.9%	3.8%	62.9
Male	1,316	60.1%	5.8%	99.7
Under investigation	0	0%	0%	-
Race-ethnicity²				
Latinx	650	29.9%	3.8%	83.7
Black, non-Latinx	975	44.9%	9.1%	124.3
White, non-Latinx	425	19.6%	8.1%	47.2
Asian, non-Latinx	104	4.8%	10.1%	57.8
Other, non-Latinx	19	0.9%	1.1%	15.9
Under investigation	15	0.7%	0.1%	-

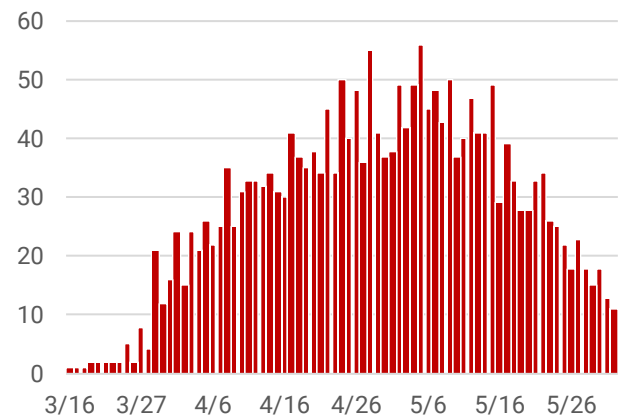
²Race-ethnicity percentage is calculated among those with known race-ethnicity as reported by the medical provider.

Underlying chronic conditions among Chicago residents who died from COVID-19

CHARACTERISTIC	NUMBER	% OF KNOWN
Known medical history	2,135	-
Underlying chronic conditions ³	1,969	92.2%
No underlying chronic conditions	166	7.8%
Under investigation	53	-

³Cases with at least one underlying chronic condition. Most common underlying conditions include diabetes, hypertension, and lung disease.

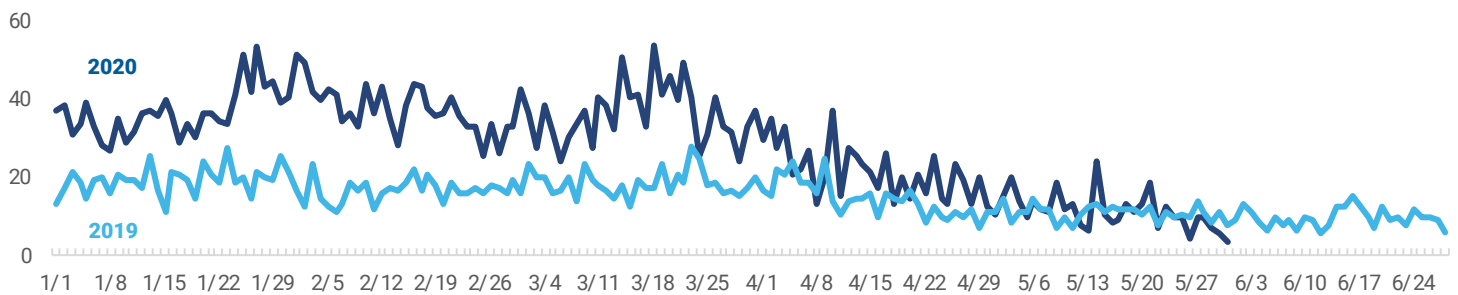
Daily COVID-19 deaths



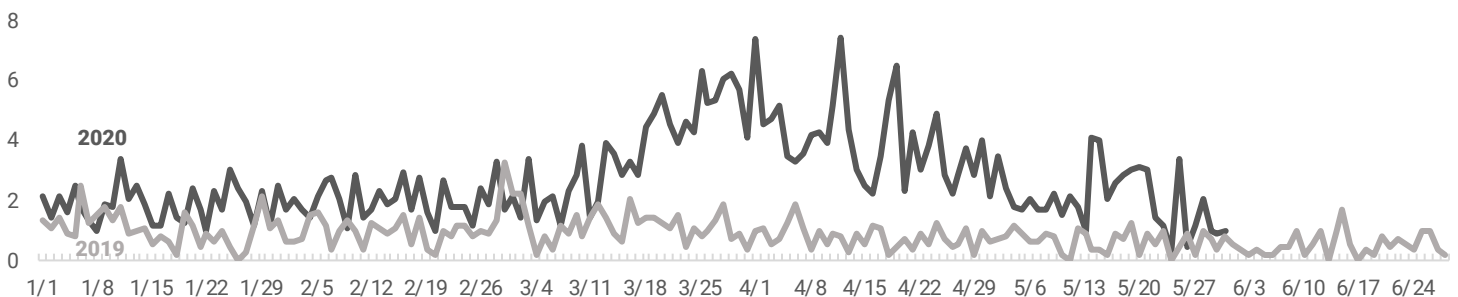
Chicago resident coronavirus 2019 (COVID-19) cases who have died, by date of death. Results for several previous days are updated each day.

COVID-19 symptoms are similar to those of influenza, so monitoring influenza-like illness (ILI) may also help identify COVID-19. ILI activity in 2020 that is higher than what was experienced in 2019 could indicate the presence of COVID-19 in the community.

Percent of daily emergency department (ED) visits due to influenza-like illness in Chicago among all age groups, 2020 vs. 2019



Percent of daily emergency department (ED) visits due to influenza-like illness in Chicago among persons aged 65+, 2020 vs. 2019



Percent of daily emergency department visits attributed to influenza-like illness for Chicago zip codes based on chief complaint submitted to ESSENCE.