

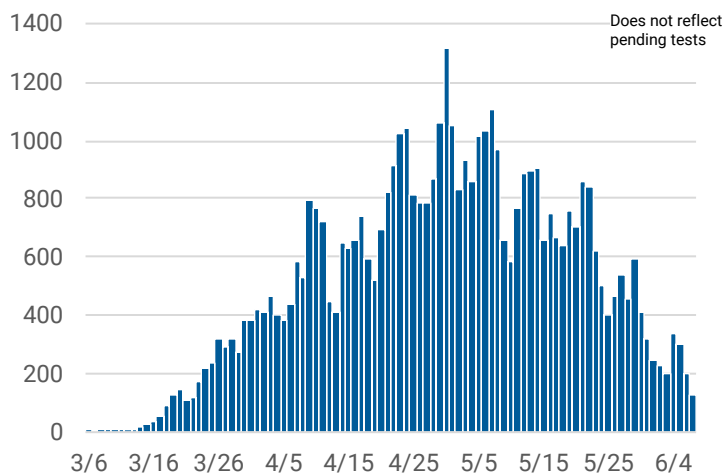


CHICAGO COVID-19 UPDATE

June 8, 2020

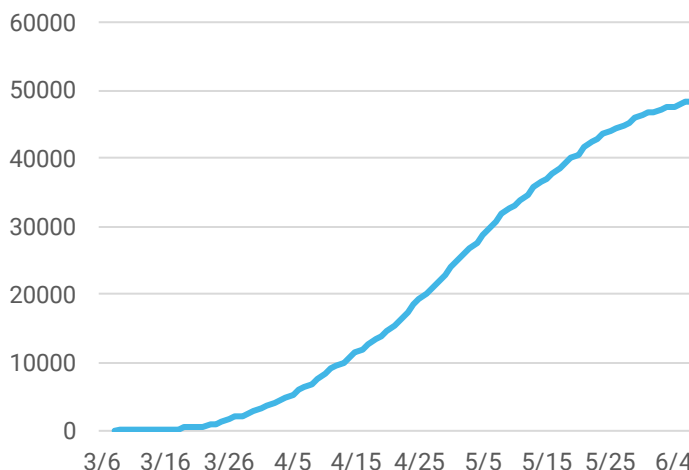
There are 48,351 cases of COVID-19 and 2,285 deaths among Chicago residents as of June 8, 2020. This is an increase of 204 cases and 16 deaths since yesterday.

Confirmed daily COVID-19 cases



Daily and cumulative coronavirus 2019 (COVID-19) cases reported for Chicago residents with known laboratory report date. Results for several previous days are updated each day. Note, there was one case of COVID-19 reported in January 2020 that is not included in the daily counts.

Confirmed cumulative COVID-19 cases



COVID-19 Morbidity and mortality by geography

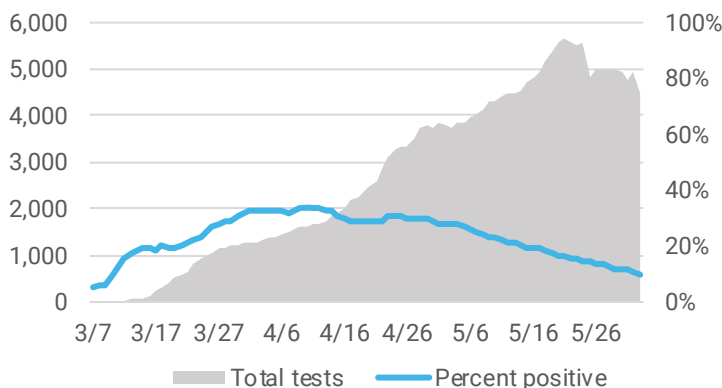
| GEOGRAPHY | CASES ¹ | DEATHS |
|---|--------------------|--------------|
| Chicago | 48,351 | 2,285 |
| Illinois (IDPH link) | 128,415 | 5,924 |
| U.S. (CDC link) | 1,938,823 | 110,375 |
| World (WHO link) | 6,931,000 | 400,857 |

¹Does not include persons with pending COVID-19 tests or persons with COVID-19 related illness who have not been tested.

As of June 8, 2020, there have been 260,763 tests performed. The 7-day average is 4,458 tests per day, with a percent positivity of 10.2%.

Average daily COVID-19 testing

Number of tests performed and percentage of tests that were positive averaged over 7 days.



Molecular tests performed at state and private laboratories with known specimen collection date. Percent positivity is based on individuals tested. Tests performed between Jan 21 and Feb 29, 2020 are not included in graph. CDPH may not receive all non-positive results.

COVID-19 Case characteristics for Chicago residents

| CHARACTERISTIC | NUMBER | % TOTAL CASES ¹ | RATE PER 100,000 |
|-----------------------------------|---------------|----------------------------|------------------|
| Chicago | 48,351 | 100% | 1,786.8 |
| Age | | | |
| 0-17 | 2,148 | 4.4% | 391.3 |
| 18-29 | 8,678 | 17.9% | 1,569.4 |
| 30-39 | 8,569 | 17.7% | 1,877.8 |
| 40-49 | 8,854 | 18.3% | 2,631.5 |
| 50-59 | 8,331 | 17.2% | 2,662.0 |
| 60-69 | 5,933 | 12.3% | 2,256.0 |
| 70+ | 5,815 | 12.0% | 2,471.1 |
| Under investigation | 23 | 0.2% | - |
| Gender | | | |
| Female | 23,822 | 49.3% | 1,718.6 |
| Male | 23,514 | 48.6% | 1,781.5 |
| Under investigation | 1,015 | 2.1% | - |
| Race-ethnicity² | | | |
| Latinx | 17,739 | 47.8% | 2,284.0 |
| Black, non-Latinx | 11,081 | 29.9% | 1,412.9 |
| White, non-Latinx | 5,374 | 14.5% | 597.1 |
| Asian, non-Latinx | 1,057 | 2.9% | 587.7 |
| Other, non-Latinx | 1,824 | 4.9% | 1,526.8 |
| Under investigation | 11,276 | 23.3% | - |

²Race-ethnicity percentage is calculated among those with known race-ethnicity as reported by the medical provider.

COVID-19 Death characteristics for Chicago residents

| CHARACTERISTIC | DEATHS | % TOTAL DEATHS | % DEATHS WITHIN GROUP | RATE PER 100,000 POP |
|-----------------------------------|--------------|----------------|-----------------------|----------------------|
| Chicago | 2,285 | 100% | 4.7% | 84.4 |
| Age | | | | |
| 0-17 | 1 | 0.0% | 0.0% | 0.2 |
| 18-29 | 15 | 0.7% | 0.2% | 2.7 |
| 30-39 | 53 | 2.3% | 0.6% | 11.6 |
| 40-49 | 118 | 5.2% | 1.3% | 35.1 |
| 50-59 | 243 | 10.6% | 2.9% | 77.6 |
| 60-69 | 495 | 21.7% | 8.3% | 188.2 |
| 70+ | 1,360 | 59.5% | 23.4% | 577.9 |
| Gender | | | | |
| Female | 913 | 40.2% | 3.9% | 66.3 |
| Male | 1,366 | 59.8% | 5.8% | 103.5 |
| Under investigation | 0 | 0% | 0% | - |
| Race-ethnicity² | | | | |
| Latinx | 693 | 30.5% | 3.9% | 89.2 |
| Black, non-Latinx | 1,011 | 44.6% | 9.1% | 128.9 |
| White, non-Latinx | 435 | 19.2% | 8.1% | 48.3 |
| Asian, non-Latinx | 110 | 4.8% | 10.4% | 61.2 |
| Other, non-Latinx | 20 | 0.9% | 1.1% | 16.7 |
| Under investigation | 16 | 0.7% | 0.1% | - |

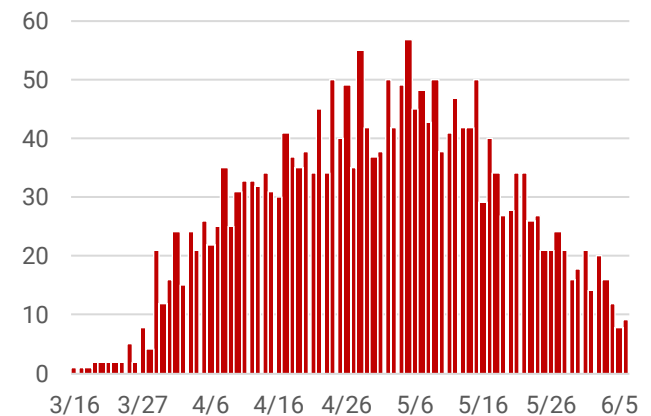
²Race-ethnicity percentage is calculated among those with known race-ethnicity as reported by the medical provider.

Underlying chronic conditions among Chicago residents who died from COVID-19

| CHARACTERISTIC | NUMBER | % OF KNOWN |
|--|--------------|------------|
| Known medical history | 2,232 | - |
| Underlying chronic conditions ³ | 2,057 | 92.2% |
| No underlying chronic conditions | 175 | 7.8% |
| Under investigation | 53 | - |

³Cases with at least one underlying chronic condition. Most common underlying conditions include diabetes, hypertension, and lung disease.

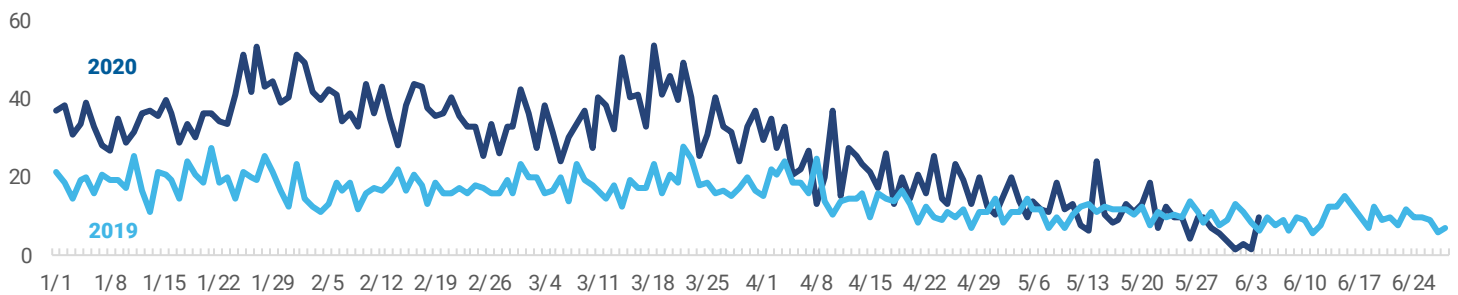
Daily COVID-19 deaths



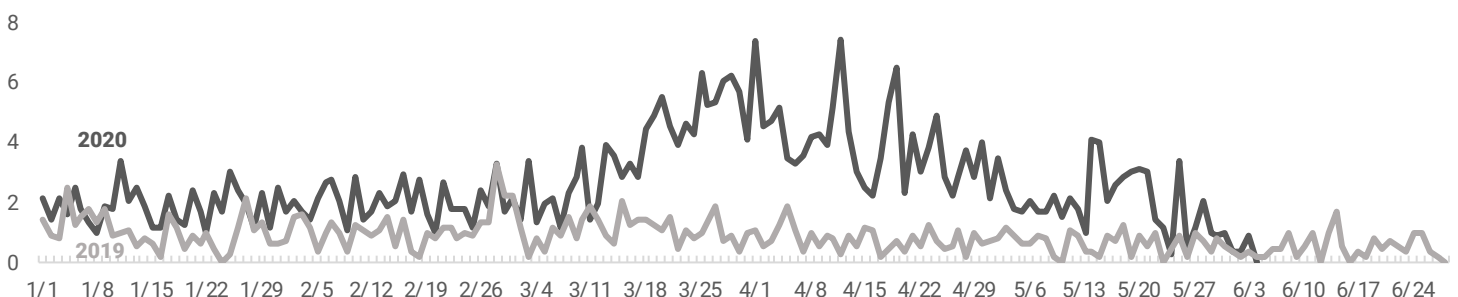
Chicago resident coronavirus 2019 (COVID-19) cases who have died, by date of death. Results for several previous days are updated each day.

COVID-19 symptoms are similar to those of influenza, so monitoring influenza-like illness (ILI) may also help identify COVID-19. ILI activity in 2020 that is higher than what was experienced in 2019 could indicate the presence of COVID-19 in the community.

Percent of daily emergency department (ED) visits due to influenza-like illness in Chicago among all age groups, 2020 vs. 2019



Percent of daily emergency department (ED) visits due to influenza-like illness in Chicago among persons aged 65+, 2020 vs. 2019



Percent of daily emergency department visits attributed to influenza-like illness for Chicago zip codes based on chief complaint submitted to ESSENCE.