



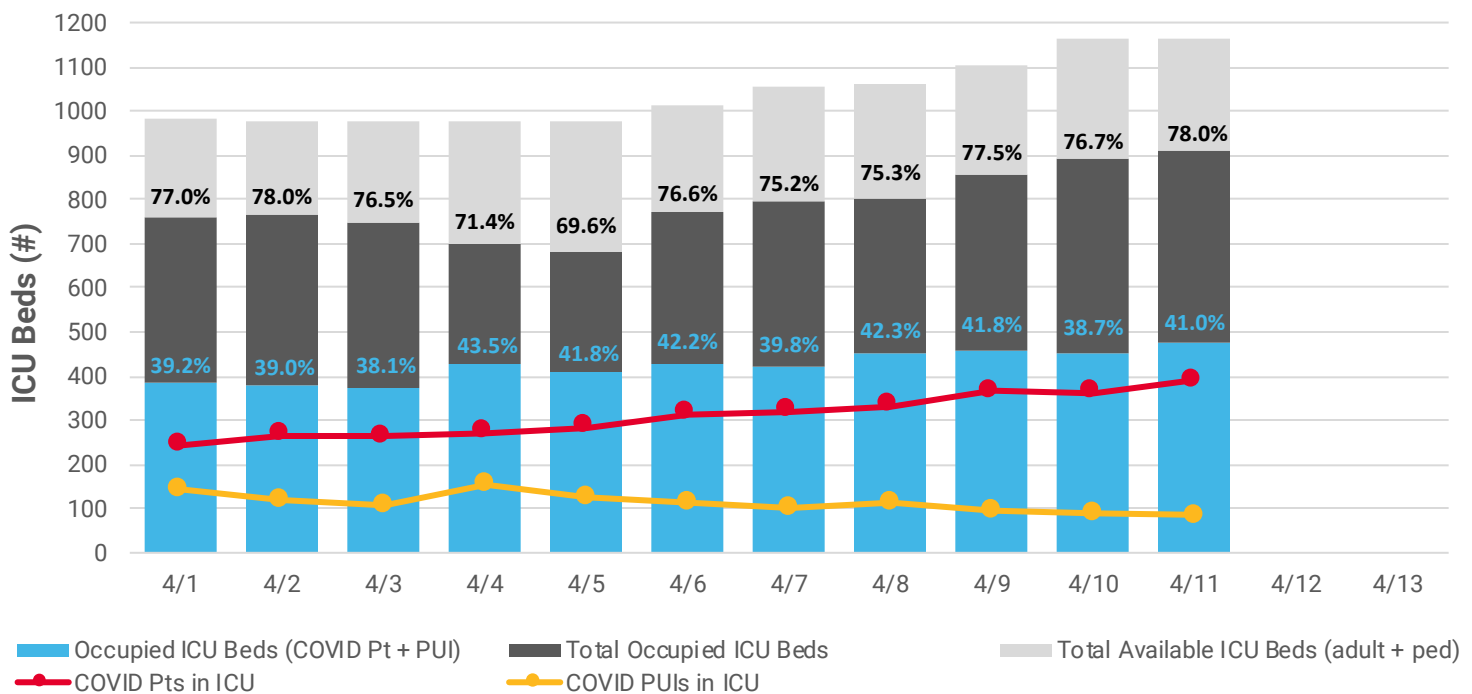
CHICAGO COVID-19 Hospital Capacity Daily Update

APRIL 12, 2020

Daily Hospital Bed (ICU and Non-ICU) Capacity¹, April 11 2359h

EMS Region XI (Chicago) Hospitals ⁴				
	ICU Beds ¹ (#)	Percent Total ICU Capacity ¹ (%)	Non-ICU Beds ² (#)	Percent Total Non-ICU ² Capacity (%)
Total capacity	1164	100.0%	7236	100.0%
Occupied beds (total)	908	78.0%	5384	74.4%
Occupied beds (COVID-19)	477	41.0%	978	13.5%
COVID-19 patients	391	33.6%	-	-
COVID-19 PUI ³	86	7.4%	-	-
Occupied beds (non-COVID-19)	431	37.0%	4406	60.9%
Available beds (total)	256	22.0%	1852	25.6%
Adult	199	17.1%	-	-
Pediatric	57	4.9%	-	-
Adult ICU Surge Capacity ¹	133	-	-	-
Pediatric ICU Surge Capacity ¹	40	-	-	-
McCormick Place (Hall C)	-	-	500	-

ICU Capacity (Adult + Pediatric) Over Time, Daily 2359h



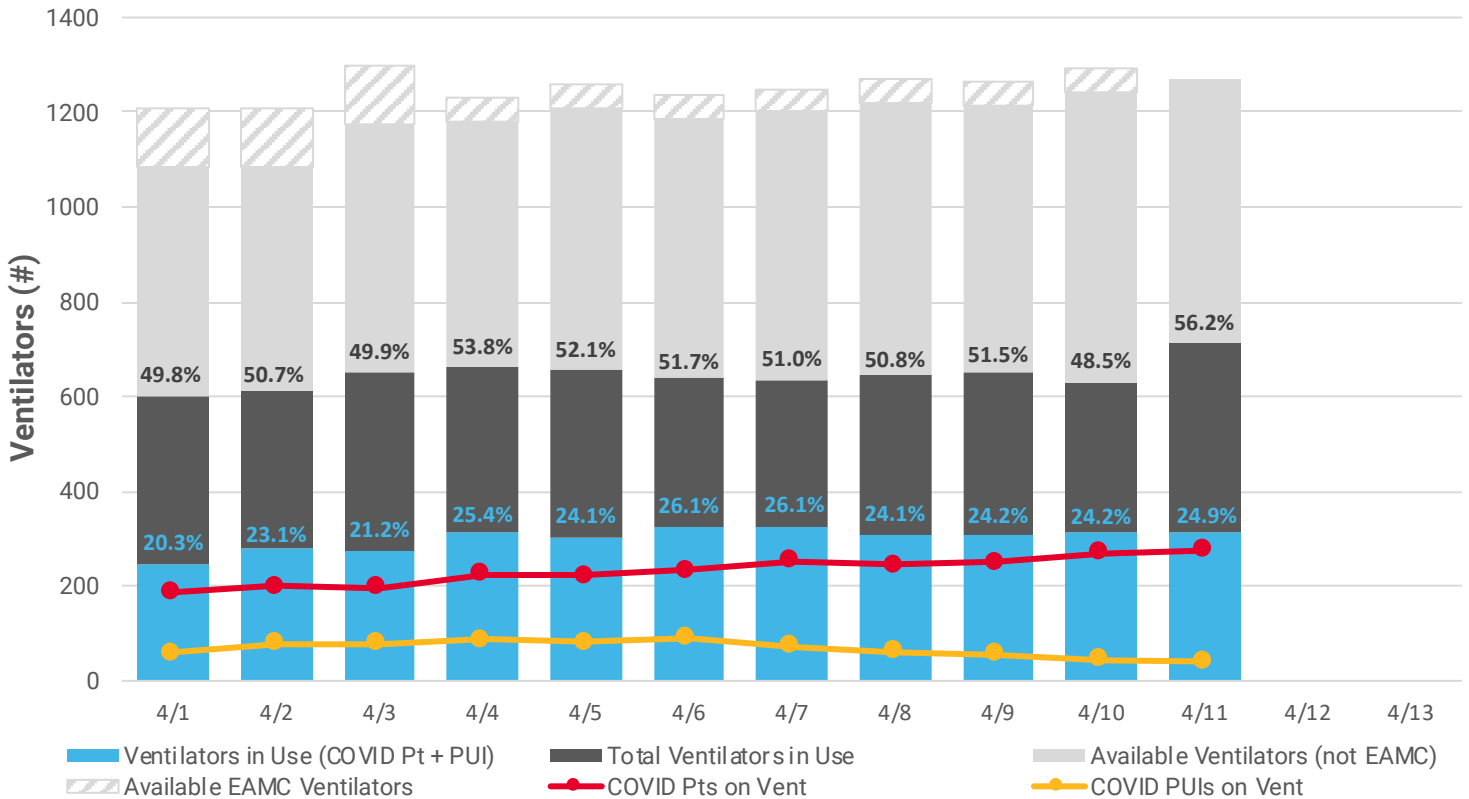
Hospitals report daily to CDPH via EMResource. Reports pulled daily at 2359h. Hospitals began reporting on March 19, 2020.

¹ICU bed count includes all adult and pediatric ICU beds in EMS Region XI (Chicago) hospitals. NICU excluded from analysis. Adult and pediatric surge capacity beds not included in total capacity count or in chart. ²Non-ICU bed count includes burn, emergency department, med/surg, other, pediatrics and psychiatry. ³PUI = Person Under Investigation. ⁴A list of all EMS Region XI (Chicago) hospitals reporting can be found on following page.

Daily Ventilator Capacity¹, April 11 2359h

EMS Region XI (Chicago) Hospitals ³		
	Number	Percent of Total Capacity
Total ventilators (includes EAMC ²)	1271	100.0%
Ventilators in use (total)	714	56.2%
Ventilators in use (COVID-19)	316	24.9%
COVID-19 patients	275	21.6%
COVID-19 PUI	41	3.2%
Ventilators in use (non-COVID-19)	398	31.3%
Available ventilators (total)	557	43.8%
Hospital	557	43.8%
EAMC cache ²	-	-
Ventilator Surge Capacity ¹	291	

Ventilator Capacity Over Time, Daily 2359h



Hospitals report daily to CDPH via EMResource. Reports pulled daily at 2359h. Hospitals began reporting on March 19, 2020.

¹Ventilator count includes all hospital ventilators in EMS Region XI (Chicago) hospitals plus ventilators currently in EAMC cache. Surge capacity ventilators not included in total. ²EAMC = Emergency Asset Management Center. Numbers not available as of 04/12/2020

³EMS Region XI Hospitals Reporting Include: Advocate Illinois Masonic Medical Center, Advocate Trinity Hospital, AMITA Resurrection Medical Ctr Chicago, AMITA Saint Joseph Hospital Chicago, AMITA Saints Mary & Elizabeth Med Center, Ann & Robert H Lurie Children's Hospital, Comer Children's Hospital, Community First Medical Center, Holy Cross Hospital, Jackson Park Hospital & Medical Center, John H. Stroger Jr. Hospital Cook County, Loretto Hospital, Mercy Hospital and Medical Center, Methodist Hospital of Chicago, Mount Sinai Hospital, Northwestern Memorial Hospital, Norwegian American Hospital, Roseland Community Hospital, Rush University Medical Center, Saint Anthony Hospital, Saint Bernard Hospital, South Shore Hospital, Swedish Hospital, Thorek Memorial Hospital, University of Chicago Medical Center, University of Illinois Hospital & HSS, Weiss Memorial Hospital. Specialty hospitals are included in capacity counts.

PUBLISHED: April 12, 2020 1400h

