

# *Chicago Green Infrastructure Strategy*



# Chicago's Stormwater Challenges



Credit: Colin Boyle/Block Club Chicago



Credit: Chicago Tribune



# What Can be Done?

The stormwater solution includes both **Gray** AND **Green**

**Gray infrastructure**  
directs stormwater  
somewhere else.

*Examples:  
Storm sewer  
systems,  
water treatment  
plants*



**Green infrastructure**  
keeps rain where  
it falls, allowing it  
to soak into the  
ground.

*Examples:  
Rain gardens,  
bioswales,  
green roofs*





*About  
Green Stormwater  
Infrastructure*





A background photograph showing two individuals, likely of African descent, engaged in planting a young tree in a grassy field. One person is kneeling and holding a black bucket, while the other is also kneeling and holding the sapling. They are both wearing casual clothing. The image is slightly blurred and has a dark overlay to make the text stand out.

# *What is Green Stormwater Infrastructure?*

---

**Nature-based solutions that  
manage water where it falls  
by mimicking natural systems.**



# *Common Nature-Based Solutions*



**Stormwater Planter**



**Subsurface Storage**



**Stormwater Trees**



**Permeable Pavement**



**Stormwater Bump Outs**



**Rain Garden / Bioretention Basin**



**Green Roofs**



**Cisterns/Rain Barrels**



# Co-Benefits to Nature-Based Solutions

## Beautification

Well-maintained landscaping adds beauty to spaces.



## Personal Safety

Well-maintained green spaces can help deter illegal activities, making communities safer.



## Education

Green infrastructure can provide opportunities for students and adults to learn about environmental issues.



## Mental Well-being

Green space can help reduce stress and improve mental well-being.



## Gathering Space

Beautiful gathering places can foster a sense of community and belonging.



## Physical Health

Green spaces draw people outside for recreation.



## Water Quality

Plants capture and filter stormwater, reducing pollution before it enters local waterways.



## Air Quality

Trees and plants can filter the air, making it cleaner to breathe.



## Habitat

Native plants provide food and shelter for pollinators and wildlife.





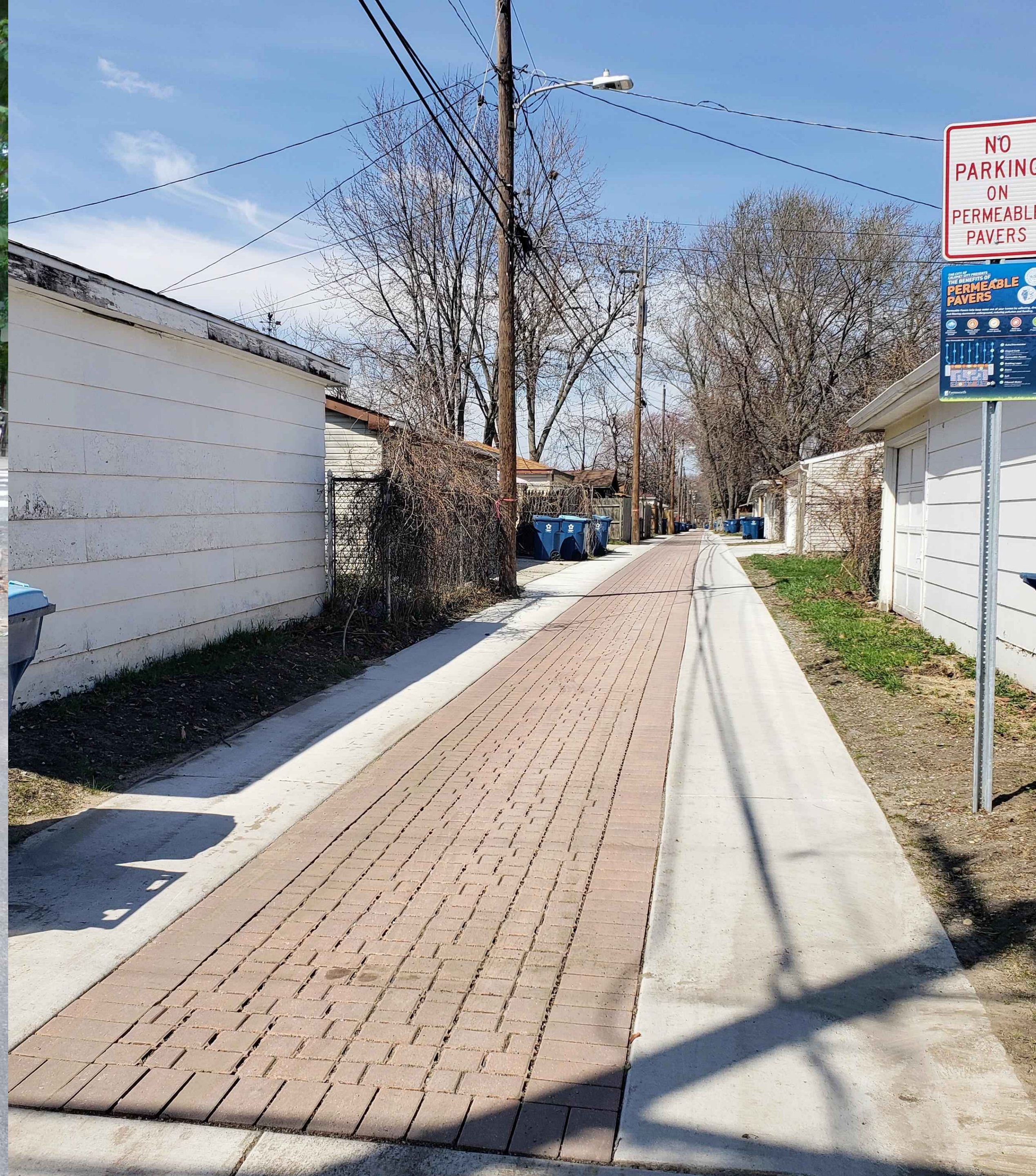
*Public Gathering  
and Social Spaces*



*Photo: Chicago Park District*



# *Green Streets and Alleys*





*Beautified  
Properties*



*Photo: Austin Garden Collective Website*



# *Green Schoolyards*



*Photo Courtesy of Space to Grow*



# *What is the Chicago GSI Strategy?*



# *A Framework for the Future of GSI*

What is the **current state**  
of GSI in Chicago?

What do we have now?

What is **working** with how  
GSI is currently developed?

What **isn't working**?

**What types** of GSI, and **where**,  
should be the focus going forward?

What do Chicagoans want to see  
in their communities?

What **policy and funding**  
recommendations are needed  
to make this happen?



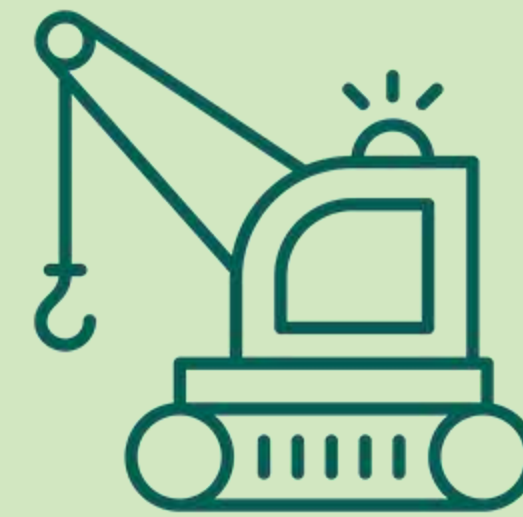
# *Project Outcomes*



**Improve  
water quality**



**Reduce  
stormwater  
runoff and  
nuisance  
flooding**



**Maximize  
community  
benefits and  
green jobs**



**Distribute  
GSI equitably**



# *How Your Feedback Will Shape the Strategy*

## **Share**

your community's  
lived experience  
with flooding and  
stormwater challenges.

## **Identify**

the nature-based  
solutions that you  
would like to see by  
providing feedback.

## **Uplift**

your vision for a  
greener Chicago for  
your neighbors and  
your community.