

ISW GREATER ENGLEWOOD

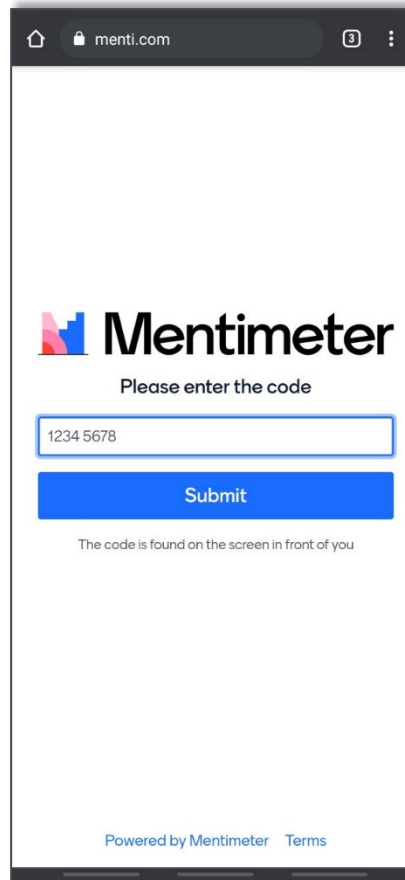
63RD STREET AND HALSTED STREET CORRIDOR IMPROVEMENTS

July 26, 2021 | ISW Roundtable Meeting



- 01** Introductions
- 02** Project Overview
- 03** Project Scope & Schedule
- 04** Streetscape Components
- 05** Initial Observations
- 06** Corridor Character
- 07** Next Steps + Q&A

- 01 Go to Menti.com
- 02 Enter 1657 0270
- 03 Answer questions
- 04 See Results



The screenshot shows a mobile browser interface for Menti.com. At the top, the address bar displays 'menti.com'. The main content area features the Menti logo (a colorful bar chart) and the text 'Mentimeter'. Below this, it says 'Please enter the code'. A text input field contains the code '1234 5678'. A blue 'Submit' button is positioned below the input field. At the bottom of the screen, there is a small note: 'The code is found on the screen in front of you'. The footer of the app shows 'Powered by Mentimeter' and a link to 'Terms'.

Chicago Department of Transportation (CDOT)

- Lubka Benak, *Program Director*
- Camille Applewhite, *Project Manager*

Jacobs

Prime Engineer

- John Wirtz
- Kelsey Waterworth

Site Design Group (MBE)

Landscape Architecture

- Jessie King

Blue Daring (M/WBE)

Public Outreach Support

- Veronica Cruz

CKL (M/WBE)

Sub Engineering

DB Sterlin (MBE)

Survey Data

Fish Transportation Group (WBE)

Traffic Data

Wang Engineering (MBE)

Geotechnical

Local Artist

Jerrold 'Just Flo' Johnson

AWARE

of project purpose and scope

OBTAIN

input on corridor features and use

SUPPORT

with notifying the community

PROJECT OVERVIEW

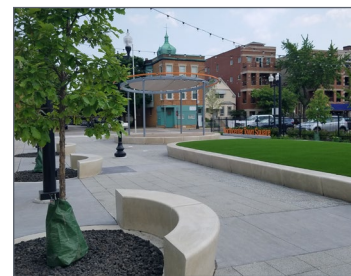
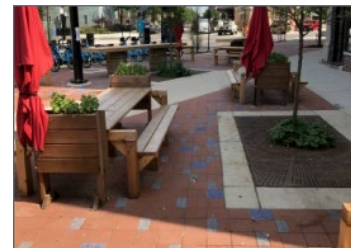
Supports the Invest South/West initiative to re-activate neighborhood cores that have historically served as focal points for pedestrian activity, shopping, services, transportation, public spaces and quality-of life amenities for residents.

Part of Chicago Works: Mayor Lori E. Lightfoot's five-year capital plan that will Invest in Communities Through Infrastructure.

The streetscapes consist of infrastructure, pedestrian safety, and placemaking improvements with the goal of creating a unified, safe, walkable, and attractive commercial destination. The streetscape projects are comprehensive and include ROW improvements from building face to building face.

The Project Includes:

- Public Outreach
- Placemaking and urban design strategy
- Concept design & engineering
- Detailed design & engineering
- Construction of the corridor



PROJECT PURPOSE AND SCOPE



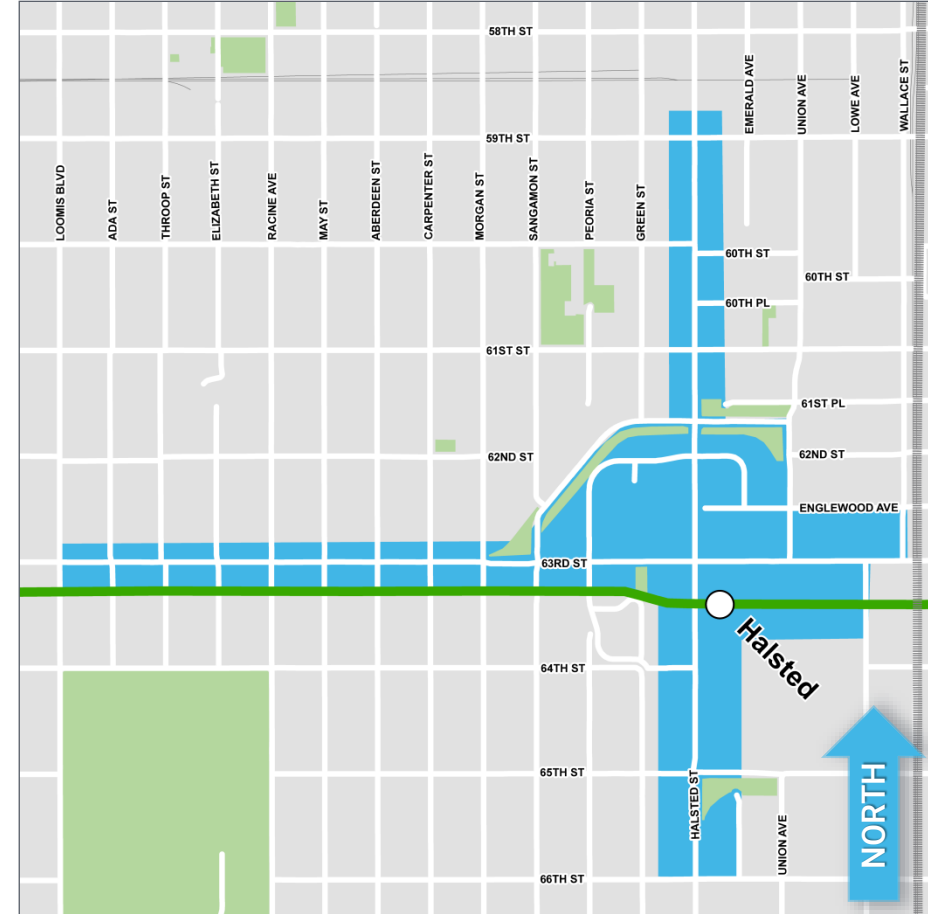
ISW Greater Englewood

63rd St, Loomis to Wallace and Halsted,
59th Street to 66th Street

Alderdorman Coleman, Ward 16 / Alderdorman Taylor, Ward 20

Scope

- Roadway geometry and intersection improvements
- Full width resurfacing
- Drainage improvements
- Sidewalk, curb, and gutter
- Curb extensions
- ADA ramps and crosswalks
- Continuation of Street lighting
- Traffic signal upgrades
- Improved pavement markings and signage
- Potential paver parkways
- Side street improvements to the alleys as needed
- Site furniture and potential seating areas
- Light pole identifiers
- Gateway identifier
- Tree planting and potential landscaping
- Renovation of Englewood Plaza



Your vital input will help the project team meet the following objectives:

- Develop a shared vision that reflects the unique community area and stakeholder goals.
- Foster an environment for future economic growth and public amenities.
- Support INVEST South/West initiative to reactive neighborhood cores.
- Incorporate public feedback within recommended improvements.

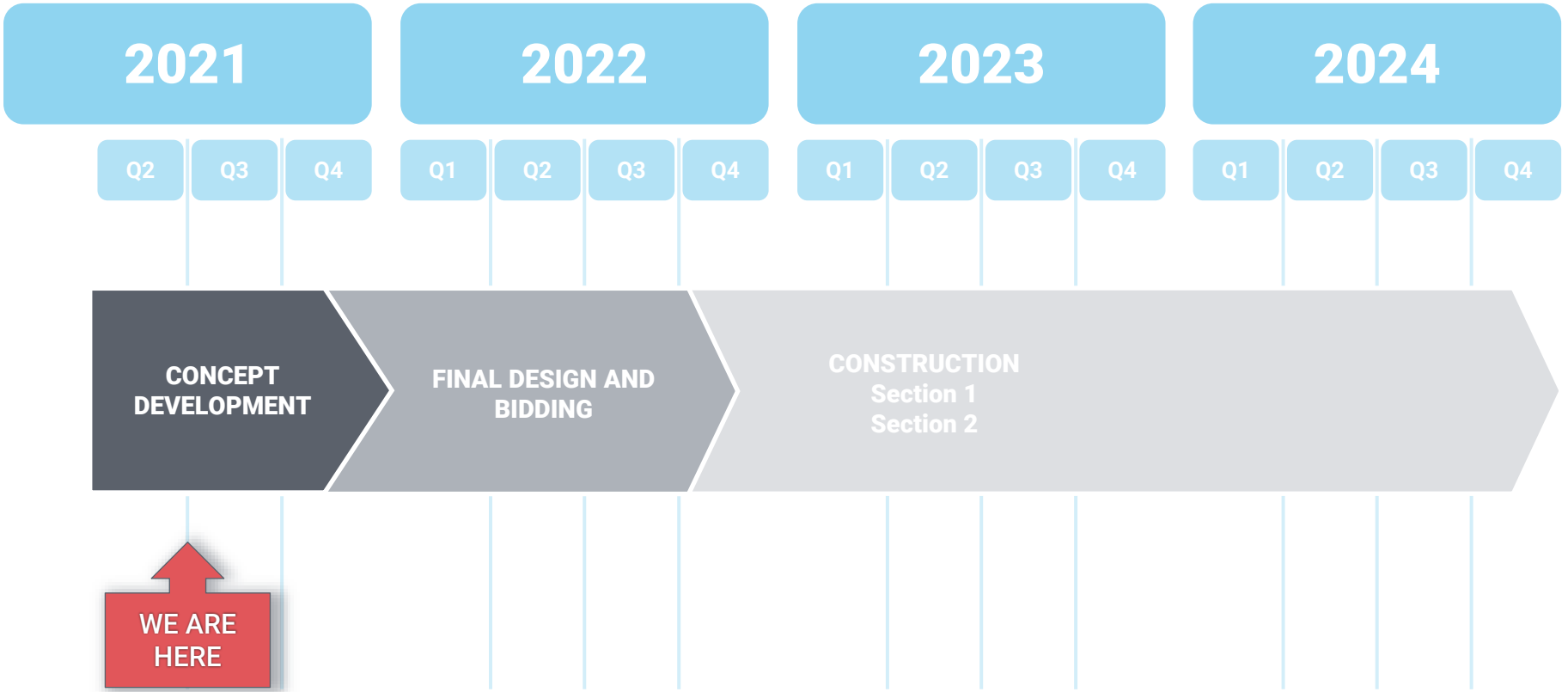
PROJECT SCOPE & SCHEDULE

WE ARE
HERE



PUBLIC OUTREACH





STREETSCAPE COMPONENTS



STREET FURNITURE

STREETSCAPE COMPONENTS



PLANTERS

STREETSCAPE COMPONENTS



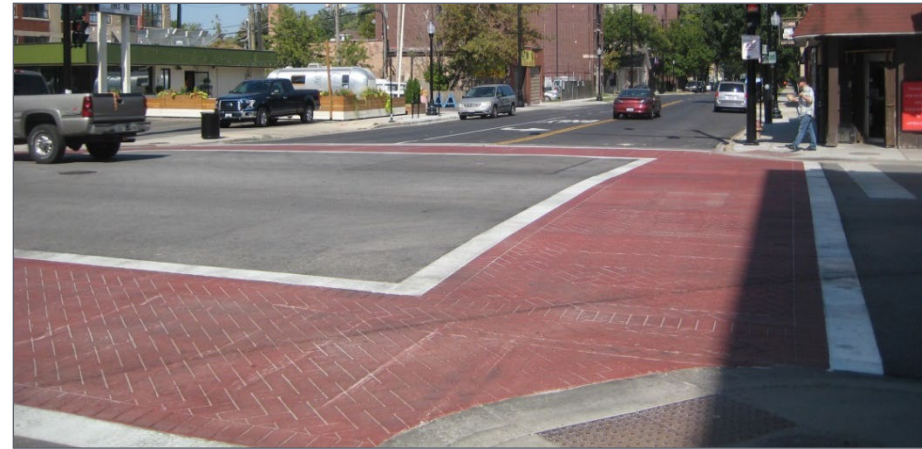
SEATING

CITY OF CHICAGO
INVEST
SOUTH * WEST
MAYOR LOUI E. LIGHTFOOT

CHICAGO
WORKS
MAYOR LOUI E. LIGHTFOOT

 **CDOT**

STREETSCAPE COMPONENTS



UPGRADED CROSSWALKS, PAVER PARKWAYS, TREES

CITY OF CHICAGO
INVEST
SOUTH * WEST
MAYOR LOUI E. LIGHTFOOT

CHICAGO
WORKS
MAYOR LOUI E. LIGHTFOOT

 **CDOT**

STREETSCAPE COMPONENTS



BUFFERED BIKE LANE



PROTECTED BIKE LANE



PROTECTED BIKE LANE



BIKE LANE



SHARED BIKE LANE



INTERSECTION MARKINGS

BIKE INFRASTRUCTURE



STREETSCAPE COMPONENTS



INTERNATIONAL
CROSSWALK



PEDESTRIAN
SIGNAGE



CURB RAMP



PEDESTRIAN REFUGE
ISLAND



PEDESTRIAN
COUNTDOWN TIMER



CURB EXTENSION



SCHOOL CROSSING
SIGNAGE



PROTECTED BIKE
LANE



DECORATIVE
INTERSECTION
PAVEMENT

BIKE AND PEDESTRIAN SAFETY IMPROVEMENTS



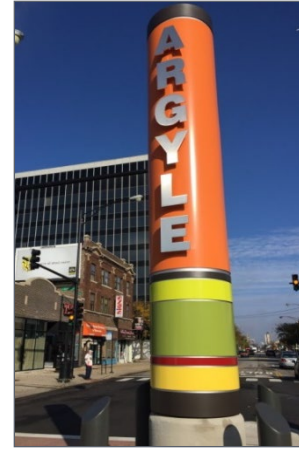
STREETSCAPE COMPONENTS



COMMUNITY IDENTIFIERS – LIGHT POLE IDENTIFIER



STREETSCAPE COMPONENTS



STREETSCAPE COMPONENTS

ROADWAY LIGHTING



CHICAGO GATEWAY POLE



DAVIT POLE

PEDESTRIAN/SIDEWALK LIGHTING



DOUBLE ACORN



SINGLE ACORN

STREET LIGHTING



Which streetscape components do you think would BENEFIT the community? Select all that apply.

Mentimeter



Shared presentation "63rd/Halsted"

Copy to your account

LIVE POLL



To better align the project's goals, CDOT is reviewing improvements proposed from previous neighborhood studies



Englewood: Making A Difference (2005)

Strategies where every resident, business owner, community and institutional leader can make a difference



Greater Englewood Community Plan (2008)

63rd and Halsted identified as a regional center corridor for commercial and mixed-use spaces



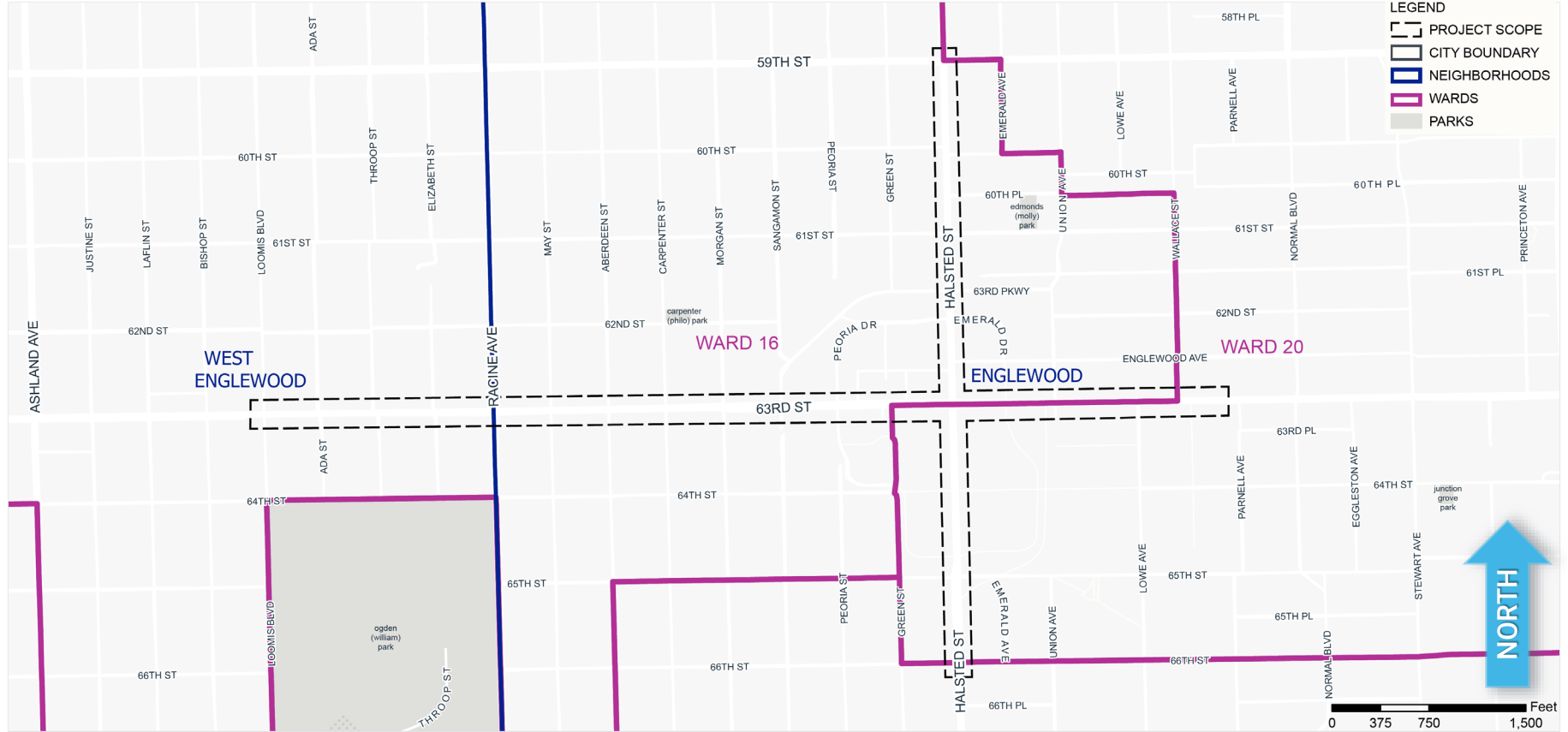
Green Healthy Neighborhoods (2014)

Focused on improvements and investments for housing, retail, landscape, manufacturing, open space, green infrastructure and historic preservation



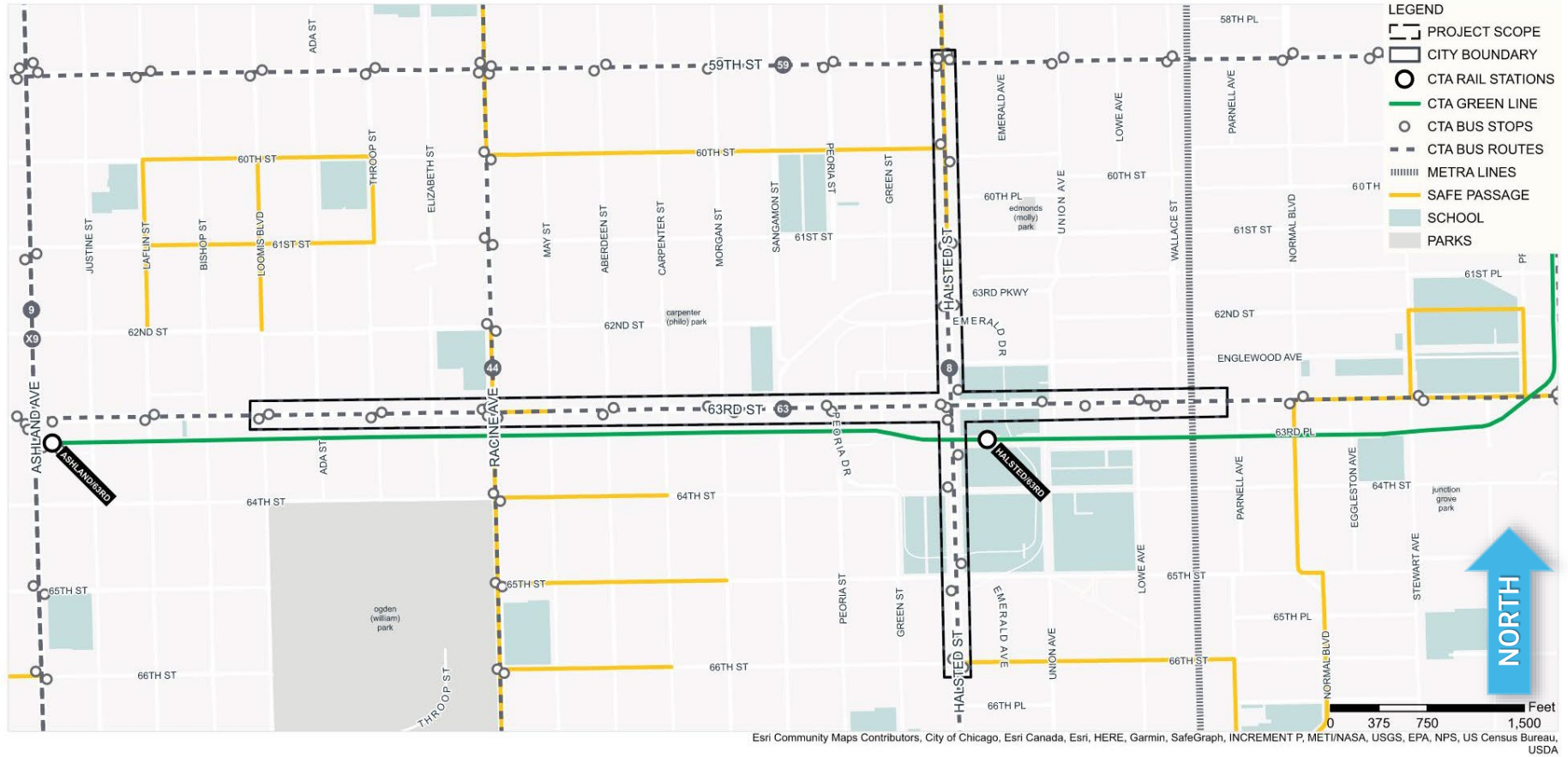
INVEST South/West: Greater Englewood (2020)

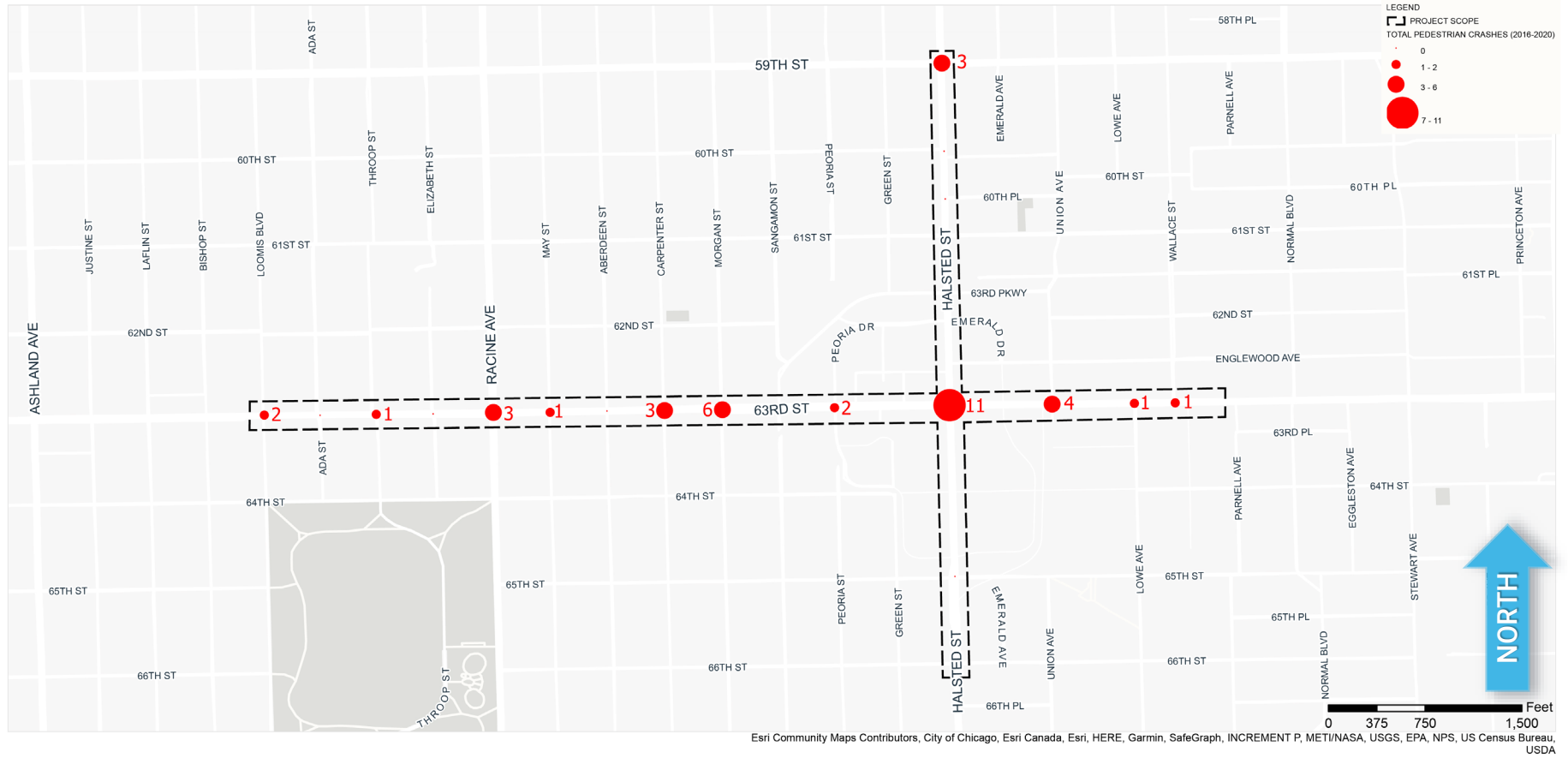
Determined 63rd and Halsted is a priority focus due to the multiple transportation options and ample opportunities for additional development.



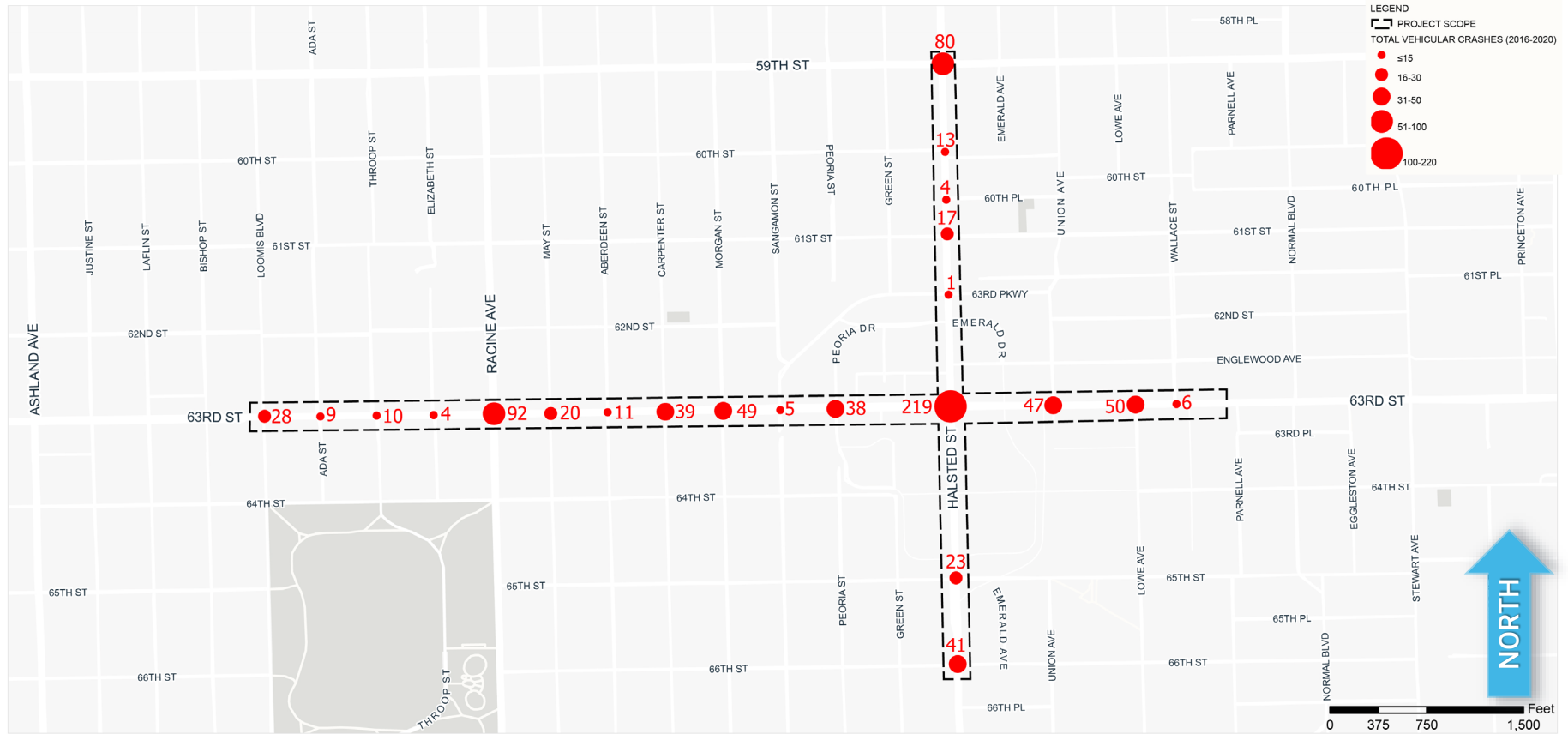
Esri Community Maps Contributors, City of Chicago, Esri Canada, Esri, HERE, Garmin, SafeGraph, INCREMENT P, METI/NASA, USGS, EPA, NPS, US Census Bureau, USDA











Esri Community Maps Contributors, City of Chicago, Esri Canada, Esri, HERE, Garmin, SafeGraph, INCREMENT P, METI/NASA, USGS, EPA, NPS, US Census Bureau, USDA

What do you want to see PRIORITIZED along 63rd St?

Mentimeter



← →



Shared presentation "63rd/Halsted"

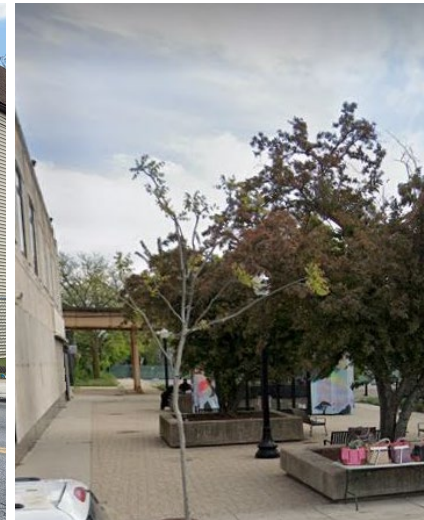
Copy to your account

LIVE POLL

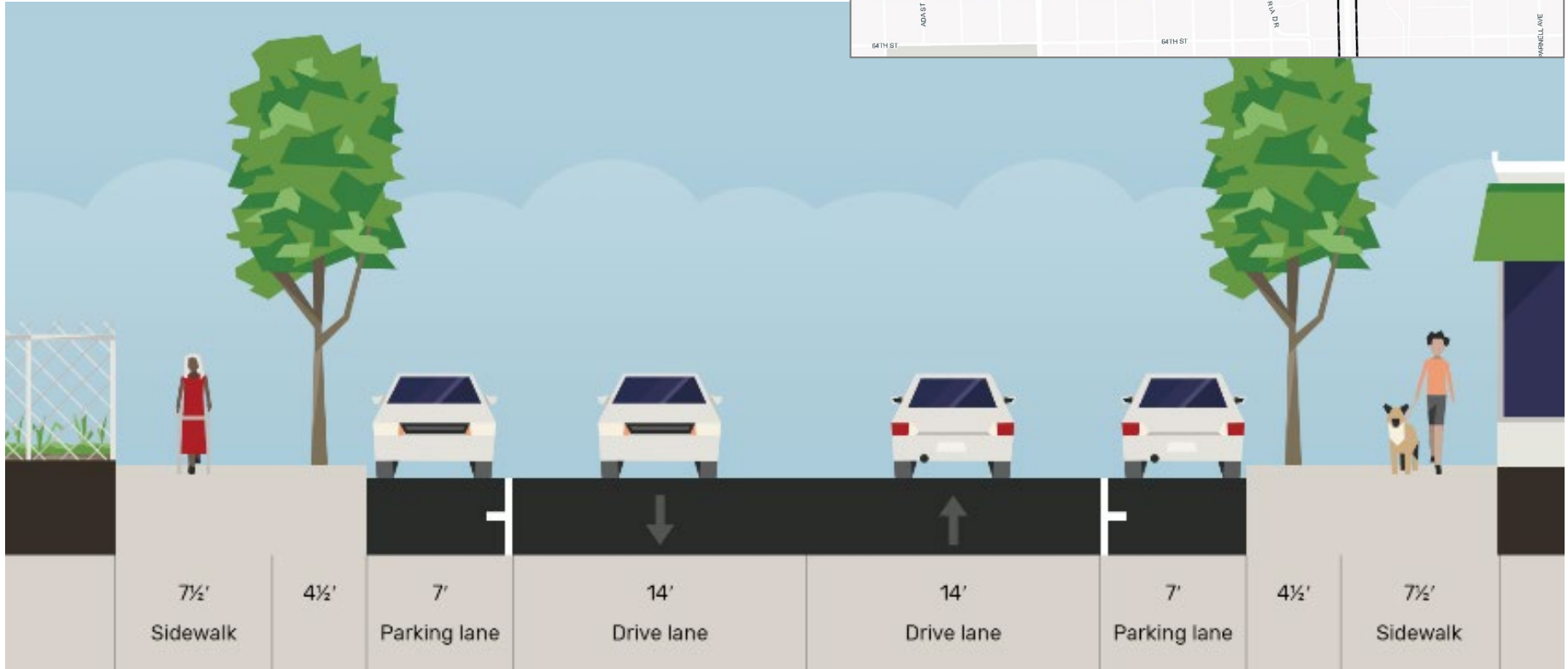


63rd Street – Initial Findings

- Many vacant lots on the west end of the corridor
- Inconsistent street trees
- New light posts from Halsted to Morgan street
- Inconsistent sidewalk widths
- No marked bike lanes
- Englewood Plaza (63rd and Green St) could use some inviting updates
- No high visual crosswalks
- No bump-outs for safer pedestrian crossings
- ADA ramps need to be checked for compliance
- A lot of on-street parking



Loomis to Morgan – 42' Roadway



Cross sections created using Streetmix.net

63RD STREET – CROSS SECTIONS



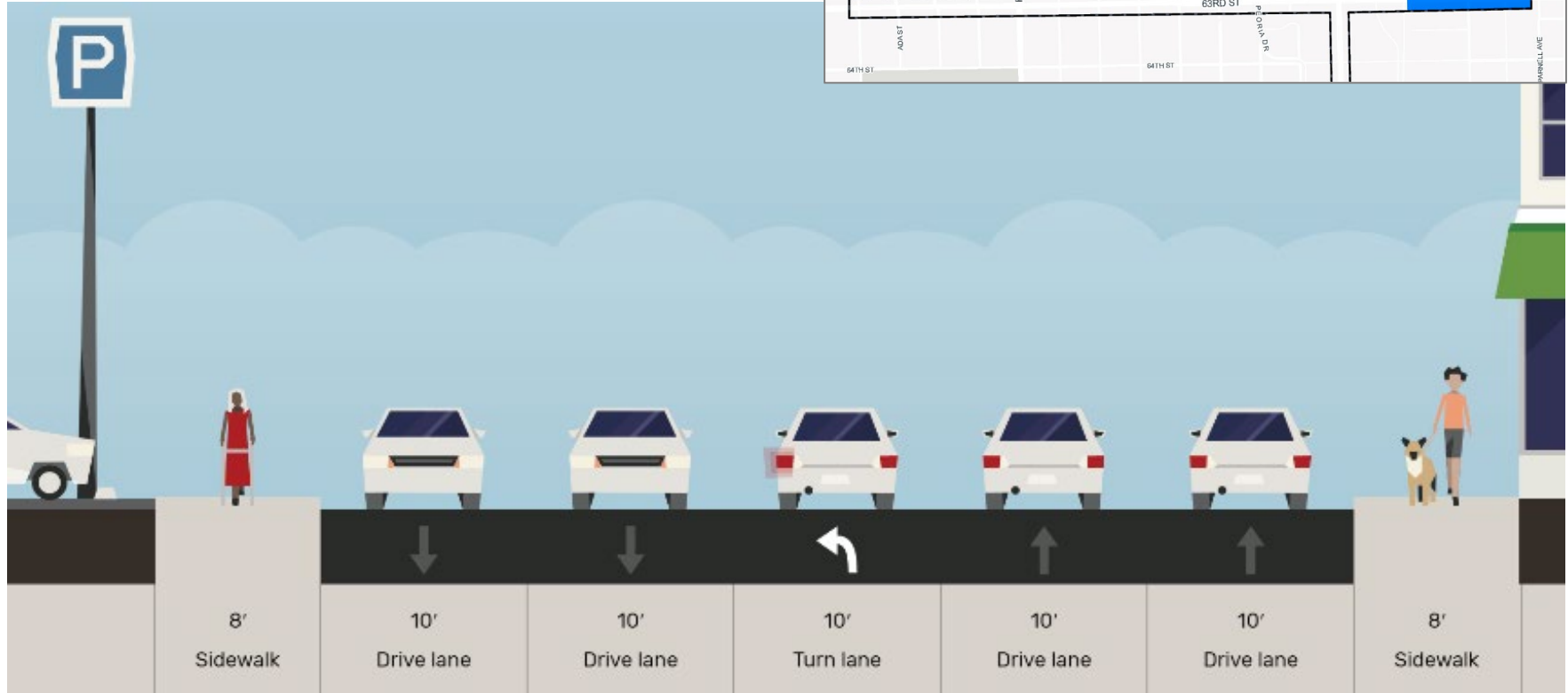
Sangamon to Union – 56' Roadway



Cross sections created using Streetmix.net

63RD STREET – CROSS SECTIONS

Union to Wallace – 50' Roadway



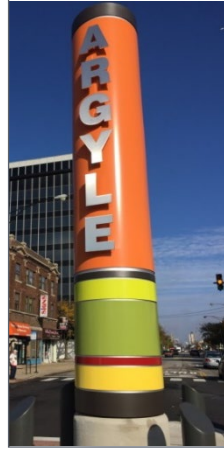
Cross sections created using Streetmix.net

63RD STREET – CROSS SECTIONS



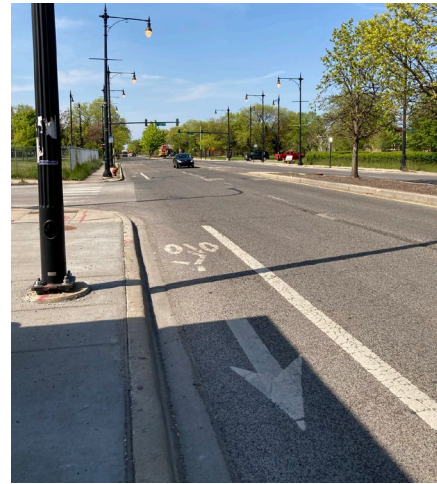
General Corridor Opportunities

- Enhanced landscaping within the ROW
- Community Identifiers
- Public art
- Safe passage signage/safety
- ADA ramps with bump outs
- Mid-block bump outs for placemaking and traffic control
- Enhanced crosswalks
- Enhanced bus stops
- Enhanced bike infrastructure

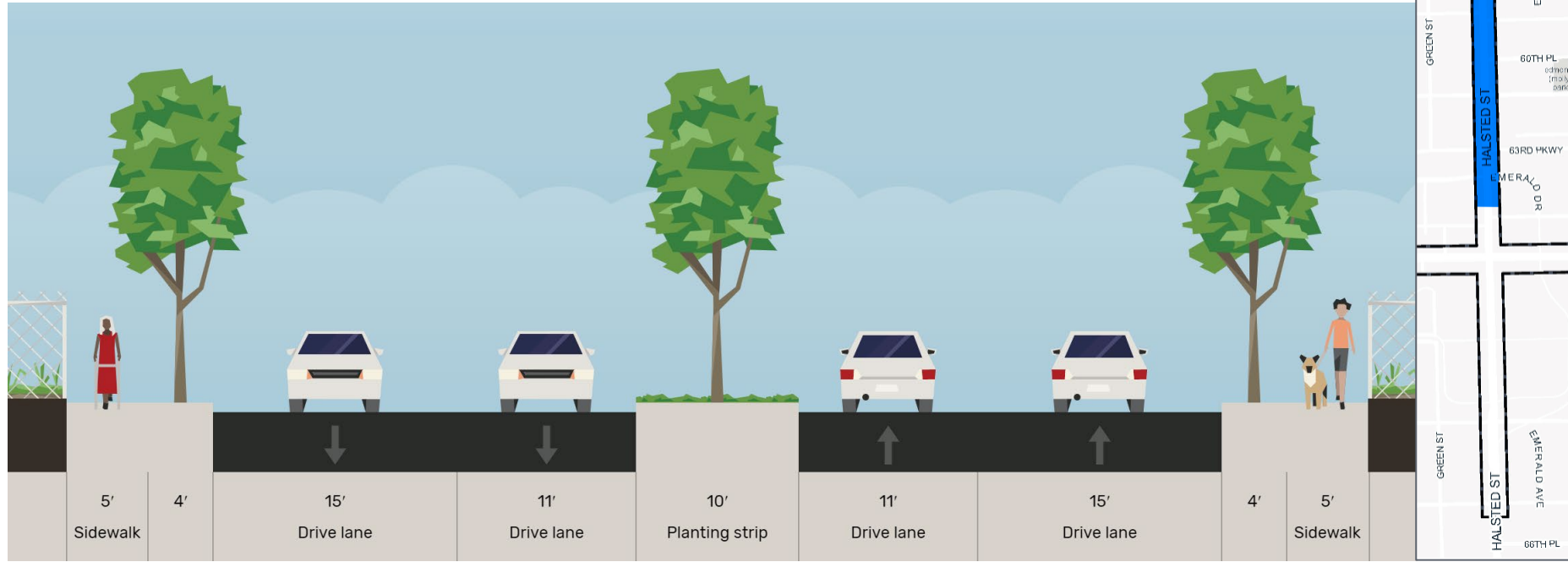


Halsted Street – Initial Findings

- Longer blocks towards the north end of the corridor
- Landscaped medians, but inconsistent street trees
- Newer light posts with banners on them from 65th St – 63rd Parkway
- Overhead utility lines 65th to 66th streets
- High traffic speeds
- Bike lane from 65th St to 63rd Parkway
- High visibility crosswalks not present at some intersections
- No bump-outs for safer pedestrian crossings
- Minimal on-street parking
- Halsted is a High Crash Corridor (Vision Zero Chicago)



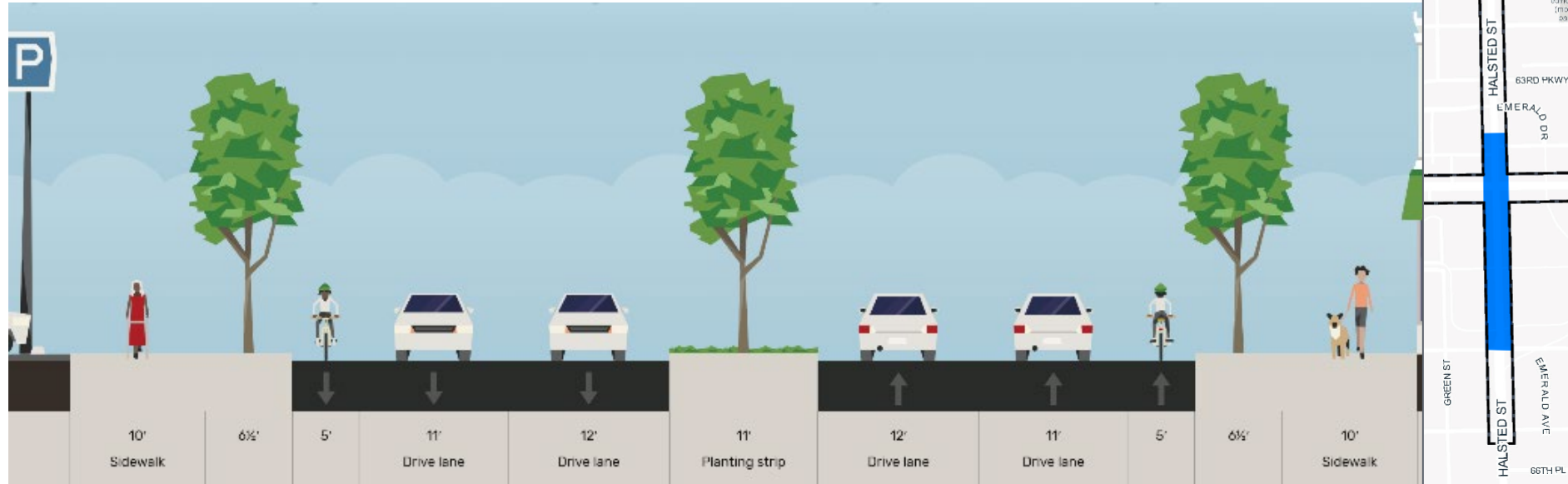
59th to Englewood Ave – 80' Roadway w/ Median



Cross sections created using Streetmix.net

HALSTED STREET – CROSS SECTIONS

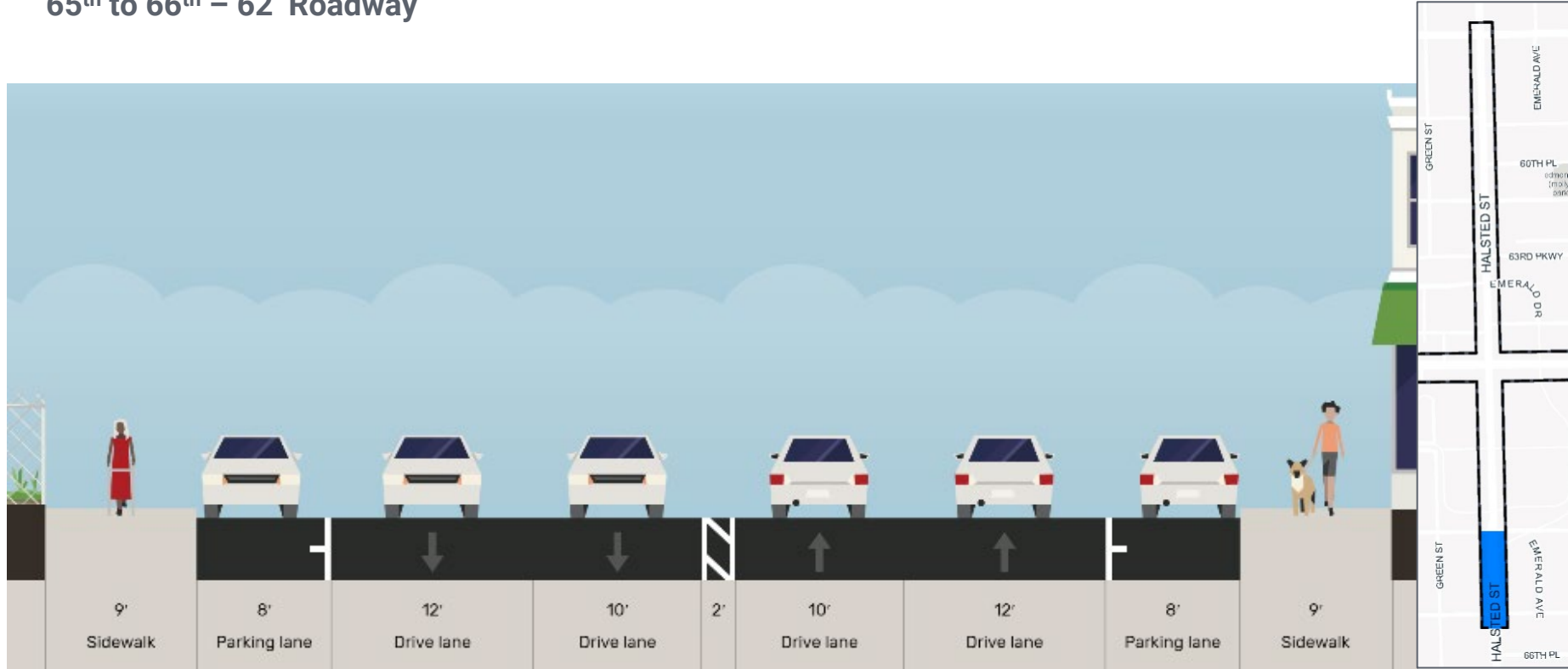
Englewood Ave to 65th – 100' Roadway w/ Median



Cross sections created using Streetmix.net

HALSTED STREET – CROSS SECTIONS

65th to 66th – 62' Roadway



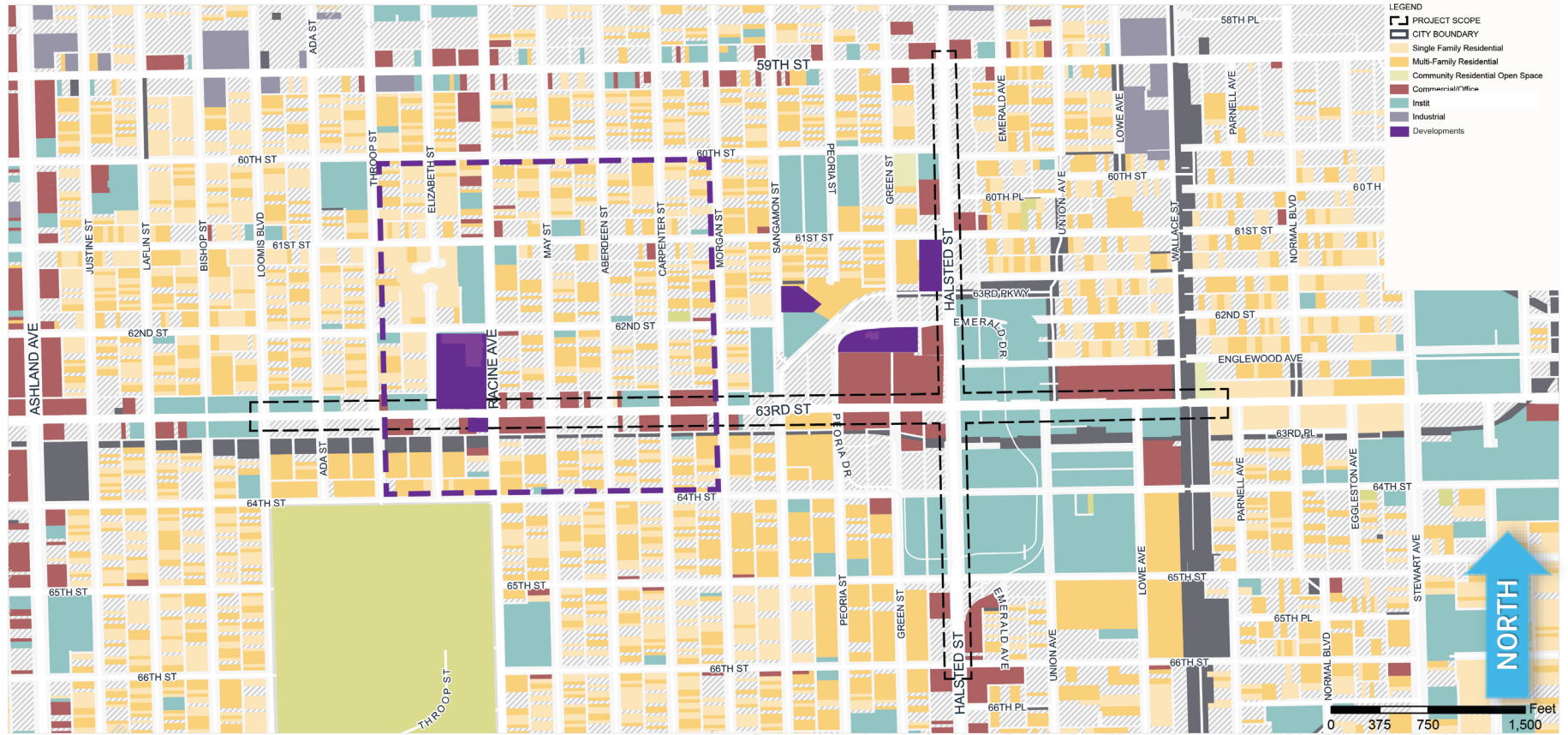
Cross sections created using Streetmix.net

HALSTED STREET – CROSS SECTIONS

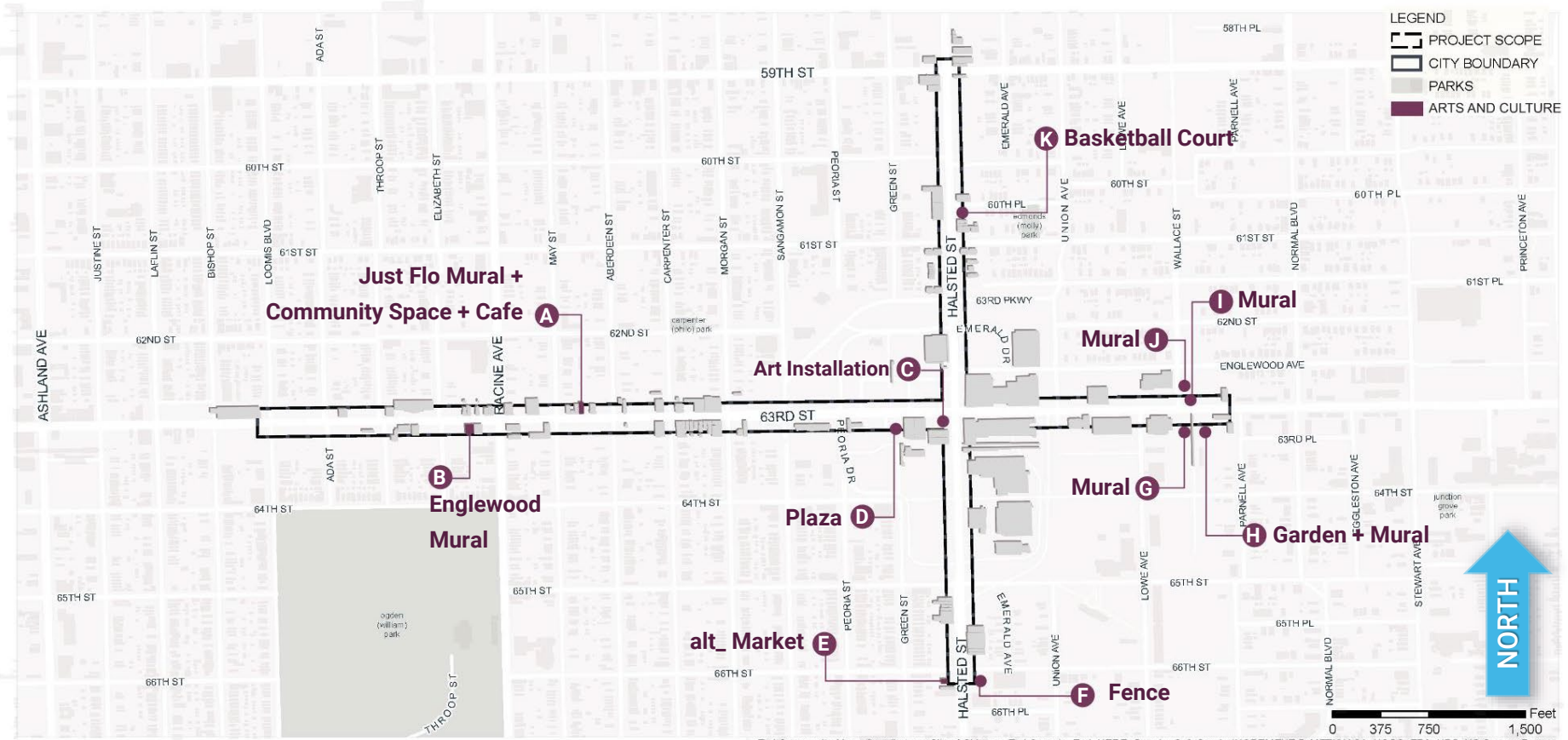
General Corridor Opportunities

- ADA ramps with bump outs
- Mid-block bump outs for placemaking and traffic control
- Enhanced crosswalks
- Enhanced bus stops
- Enhanced bike infrastructure
- Enhanced landscaping within the ROW
- Community Identifiers
- Public art
- Safe passage signage/safety

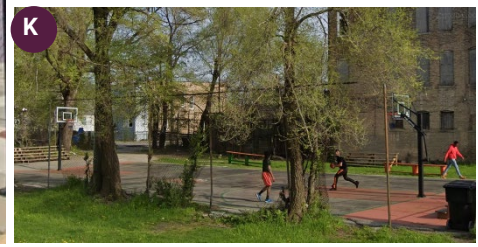




Esri Community Maps Contributors, City of Chicago, Esri Canada, Esri, HERE, Garmin, SafeGraph, INCREMENT P, METI/NASA, USGS, EPA, NPS, US Census Bureau, USDA

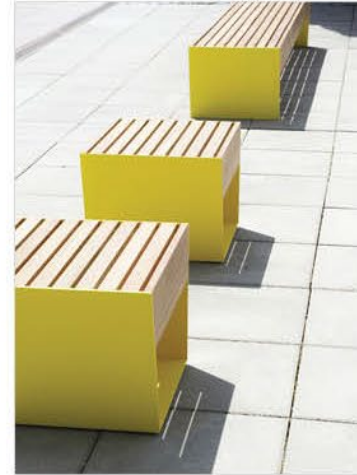


Esri Community Maps Contributors, City of Chicago, Esri Canada, Esri, HERE, Garmin, SafeGraph, INCREMENT P, MET/NASA, USGS, EPA, NPS, US Census Bureau, USDA





PLAYFUL
ACTIVE



PLAYFUL/ACTIVE

CITY OF CHICAGO
INVEST
SOUTH * WEST
MAYOR LOUI S. LIGHTFOOT

CHICAGO
WORKS
MAYOR LOUI S. LIGHTFOOT

 **CDOT**



TRADITIONAL /
HISTORIC



TRADITIONAL/HISTORIC

CITY OF CHICAGO
INVEST
SOUTH * WEST
MAYOR LOUI E. LIGHTFOOT

CHICAGO
WORKS
MAYOR LOUI E. LIGHTFOOT

 CDOT



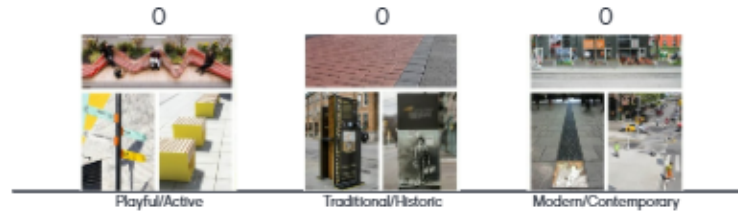
MODERN /
CONTEMPORARY



MODERN/CONTEMPORARY

What kind of CHARACTER would you like the corridor to have?

Mentimeter



← →



Shared presentation "63rd/Halsted"

Copy to your account

LIVE POLL



How would you like to USE the outdoor space at 63rd St Plaza??



Show image
Street 5



Shared presentation "63rd/Halsted"

Copy to your account

LIVE POLL



What are the BEST features along 63rd St and S Halsted St?

Mentimeter



Shared presentation "63rd/Halsted"

Copy to your account

LIVE POLL





Public Meeting & Survey #1



Develop Corridor Design Concepts

THANK YOU! THANK YOU! THANK YOU!

We appreciate **YOU taking the time to join us!**

Contact [Camille Applewhite](mailto:Camille.Applewhite@site-design.com) at Camille.Applewhite@site-design.com
or by visiting chicagocompletestreets.org/portfolio/isw-greater-englewood/
there is a comment box there that can be used to reach the Project Manager.

