

CONCEPT A

INSPIRED BY THE AVENUES HEYDAY THE CONCEPT NODS TO THE HISTORIC GATELYS PEOPLE'S ICONIC SIGN WITH NEW SITE FURNISHINGS AND GATEWAY FEATURES TO CREATE A LIVELY SETTING.



PAVING & WALL

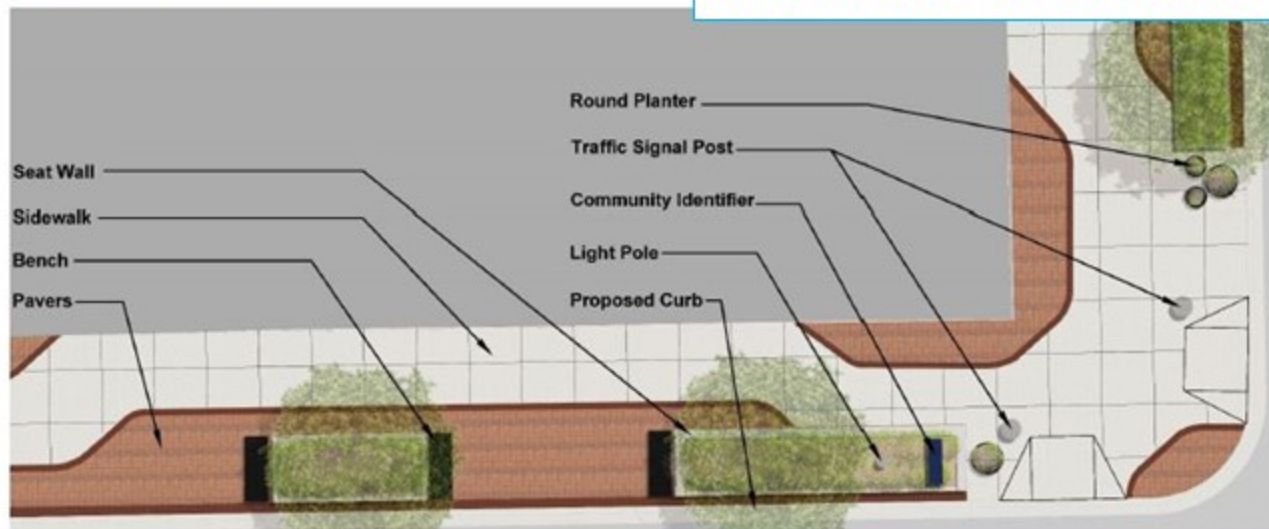
Main Walkway: Concrete
Accent Paving: Clay Pavers Mix
Crosswalk: Stamped Asphalt



Stamped Crosswalk

LAYOUT

CONCEPT A: 46% of the Vote



FURNITURE & PLANTING



STYLE CONCEPT A

CONCEPT B

ROSELAND- CONCEPT B WAS INSPIRED BY "THE TIDY VILLAGE WITH ITS BEAUTIFUL FLOWERS." THIS FLOWER FORWARD CONCEPT TRANSFORMS THE ROSE WITH A TRADITIONAL-MIX LOOK.



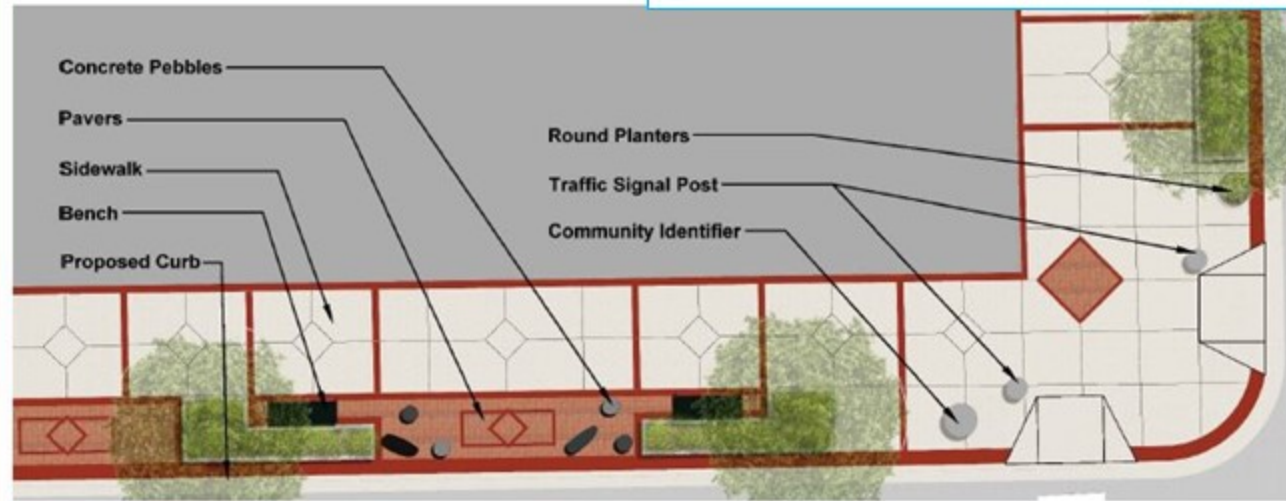
PAVING & WALL

Main Walkway: Concrete
Accent Paving: Clay Pavers Mix
Crosswalk: Stamped Asphalt



LAYOUT

✓ CONCEPT B: 54% of the Vote



FURNITURE & PLANTING



STYLE CONCEPT B

CONCEPT A



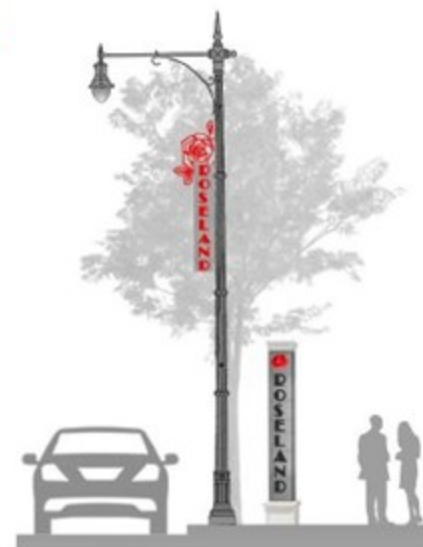
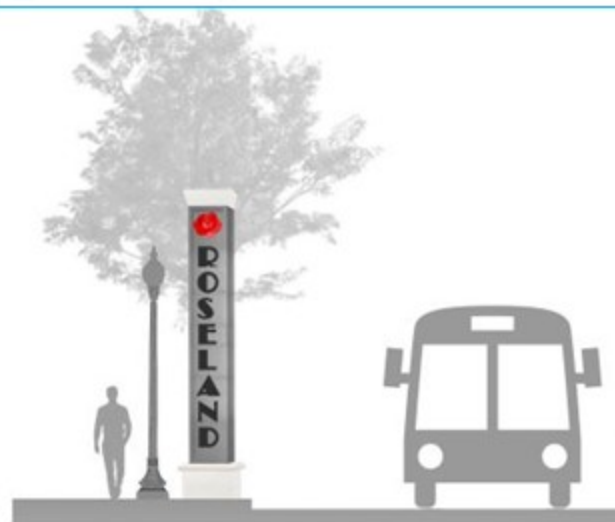
CONCEPT A: 33% of the Vote



CONCEPT B



✓ CONCEPT B: 67% of the Vote



CONCEPT IDENTIFIERS