



# **COMMITTEE ON DESIGN**

## **Department of Planning and Development**

Major Taylor Framework Plan

**Washington Heights, Morgan Park, and West Pullman**

**34<sup>th</sup> Ward / Alderwoman Austin**

DRAFT: November 3, 2022

# PROJECT TEAM



**MANAGEMENT AND COORDINATION**



**PROJECT MANAGEMENT, LAND  
USE PLANNING, MARKET  
ANALYSIS**

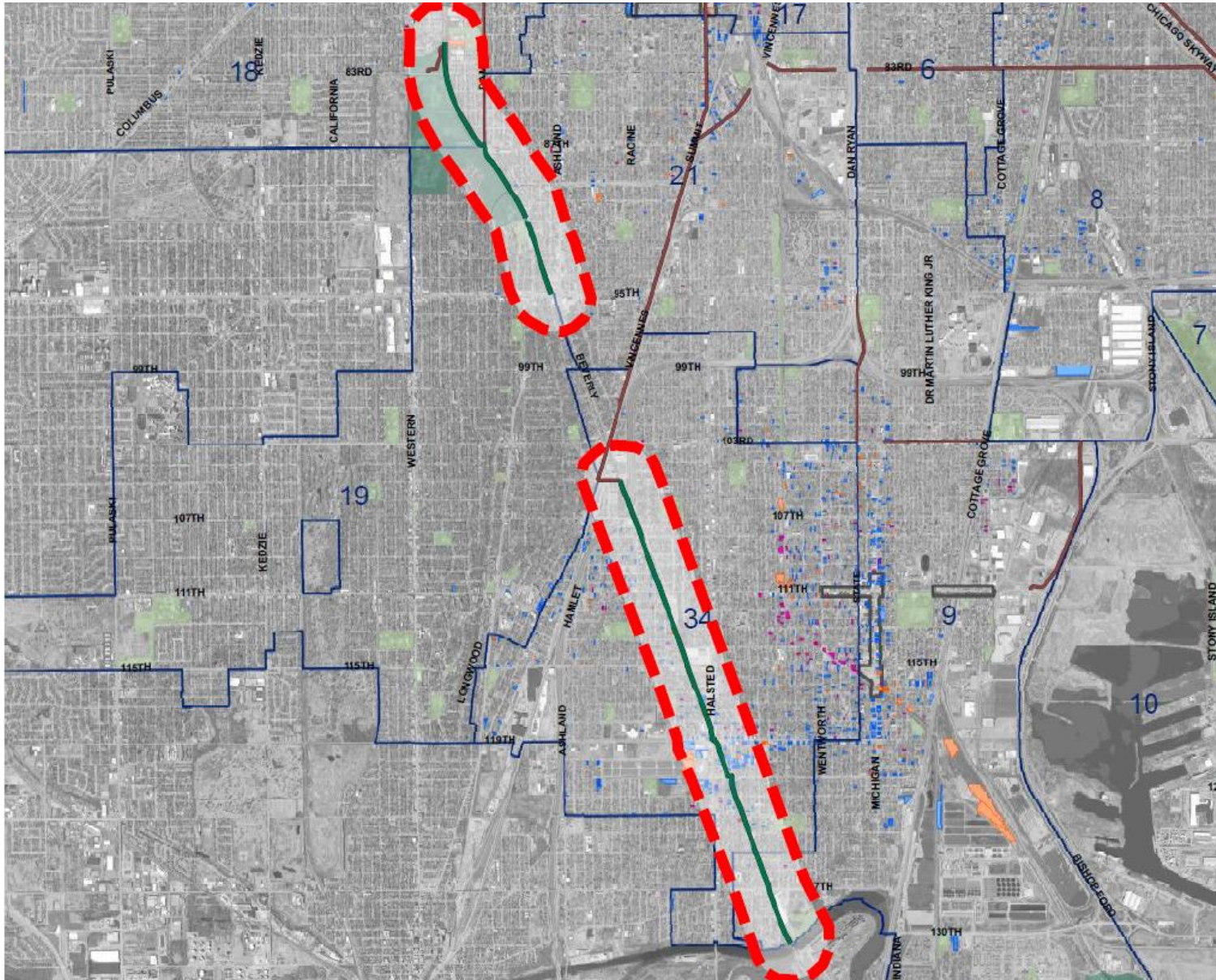


**DESIGN &  
ARCHITECTURE**

**COMMUNICATIONS  
STRATEGY**

**COMMUNITY  
ENGAGEMENT &  
OUTREACH**

# MAJOR TAYLOR TRAIL

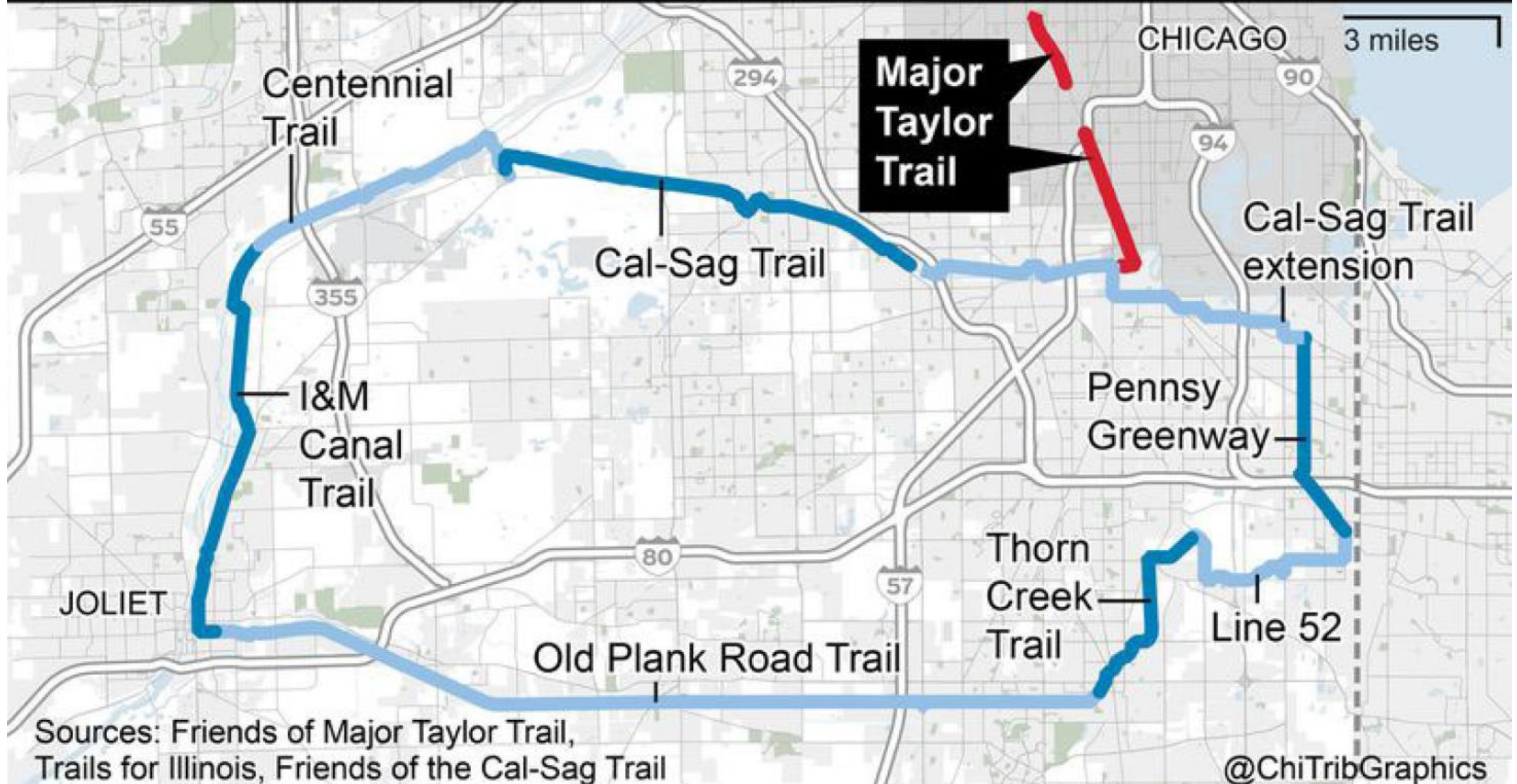


**The Major Taylor Trail is Chicago's first rails to trails project**

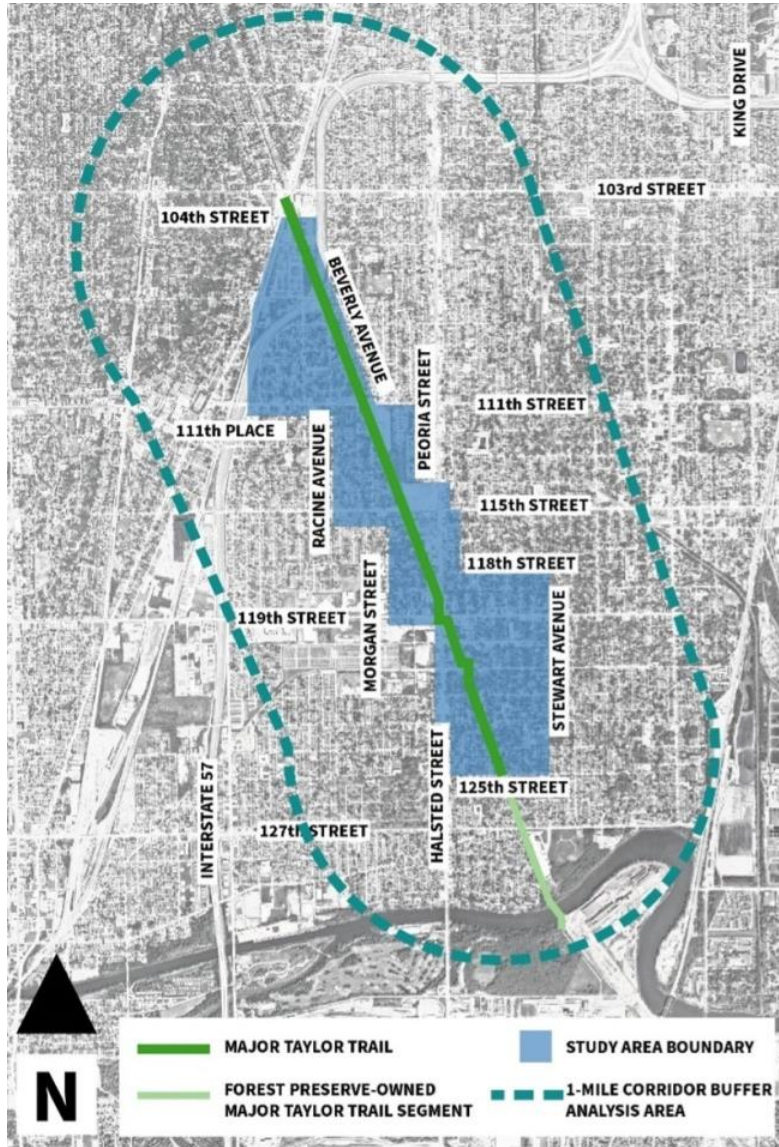
- Established from Conrail R.O.W.
- Six miles long and runs between W. 81st St. and the Little Calumet River
- Chicago's first rails to trails project

# ★ REGIONAL CONTEXT

## Major Taylor Trail and the Southland Century bike trail network



# ★ STUDY AREA & GOALS



- The southern portion of the Major Taylor Trail runs from 105th Street to the Little Calumet River.
- Major Taylor Framework Plan is intended to develop a land use, housing and vacant land strategy, to bring new vibrancy and stability to the neighborhood.
- Avoid the displacement pressure that have occurred around previous amenities like the 606.



# **COMMITTEE ON DESIGN**

## **Department of Planning and Development**

Major Taylor Framework Plan

**Washington Heights, Morgan Park, and West Pullman**

**34<sup>th</sup> Ward / Alderwoman Austin**

DRAFT: November 3, 2022