



Corridor Plan



95th Street Corridor Plan Public Meeting #3: Mobility & Transportation

WEDNESDAY, APRIL 24
6:00 – 8:00 pm

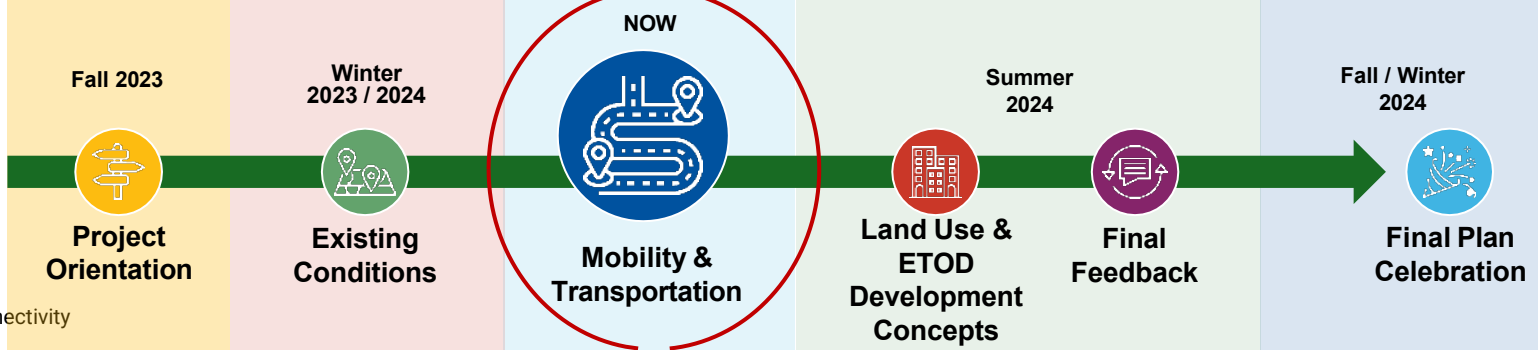
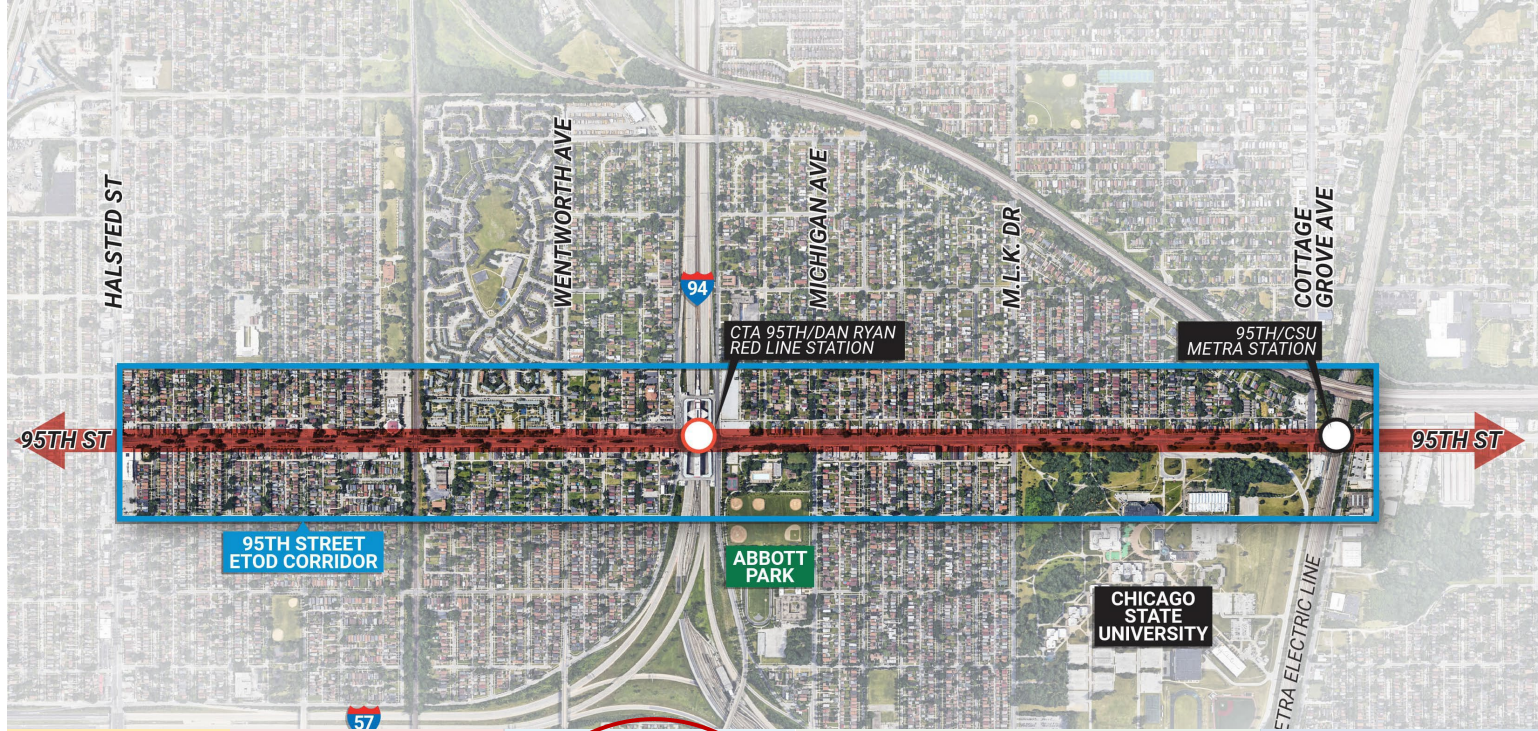
Visit chicago.gov/95th to learn more



PROJECT OVERVIEW

The 95th Street Corridor Plan will foster Equitable Transit-Oriented Development (ETOD) along 95th Street between Halsted Street and Cottage Grove Avenue.

The study is a community-driven process that will result in recommendations and goals to guide future economic growth.



Agenda



Welcome & Project Overview

Transit Agencies Updates with Q&A

CDOT

Pace

Metra

CTA

Let's Hear From You

What We've Heard So Far

Multimodal Connectivity Strategies & Poll Questions

Next Steps

Moment of Silence

The 95th Street Corridor Plan team would like to express sincere condolences on the passing of respected community leader and Community Advisory Group member, **Clevan Tucker.**

Our hearts go out to his family, friends and colleagues. Mr. Tucker will truly be missed.

His memory will live on through his lasting impact on the Roseland Community and the City of Chicago.

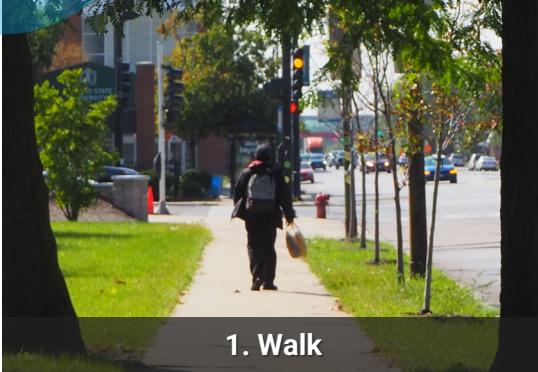


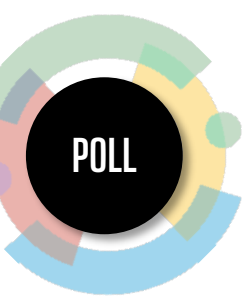
Corridor Plan



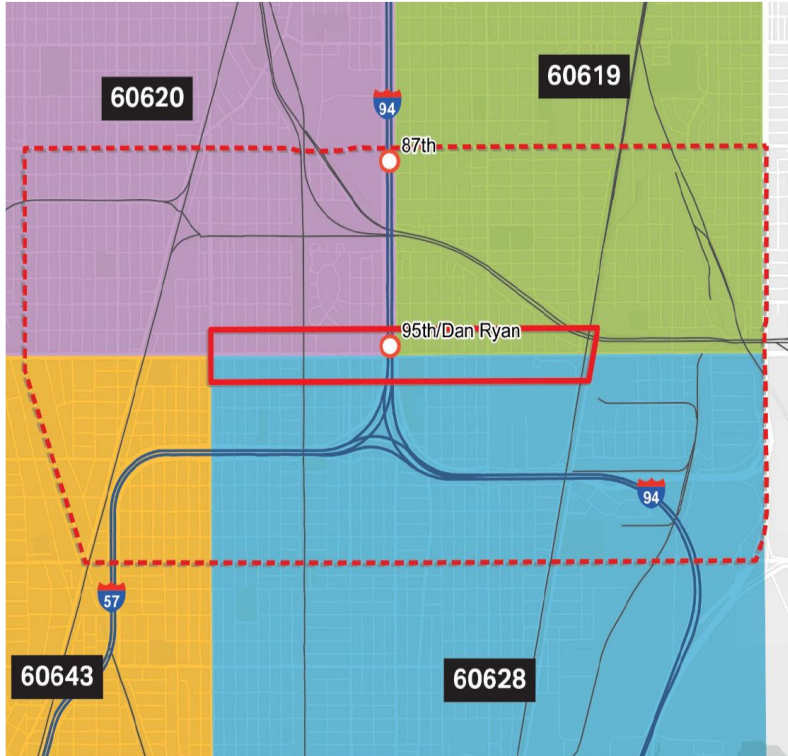
How do you move along the 95th Street Corridor? Select the mode of transportation that you currently use **most** often.


POLL





What zip code do you live in?



-  95th Street Plan Corridor
-  Wider Study Area



95th Street Corridor

Recent & Upcoming Major Transit Investments



Introductions

Speakers today



Ed Flores



Sonali Tandon



Quinn Kasal



Charlotte Obodzinski



Jasmine Gunn



David Smith



Kevin Polk



Aude Bottineau

Chicago Department Of Transportation



David Smith, Complete Streets Director

*For questions or concerns, please email
CDOTNews@cityofchicago.org or visit
Chicago.gov/cdot*





Mobility & Public Realm Public Meeting

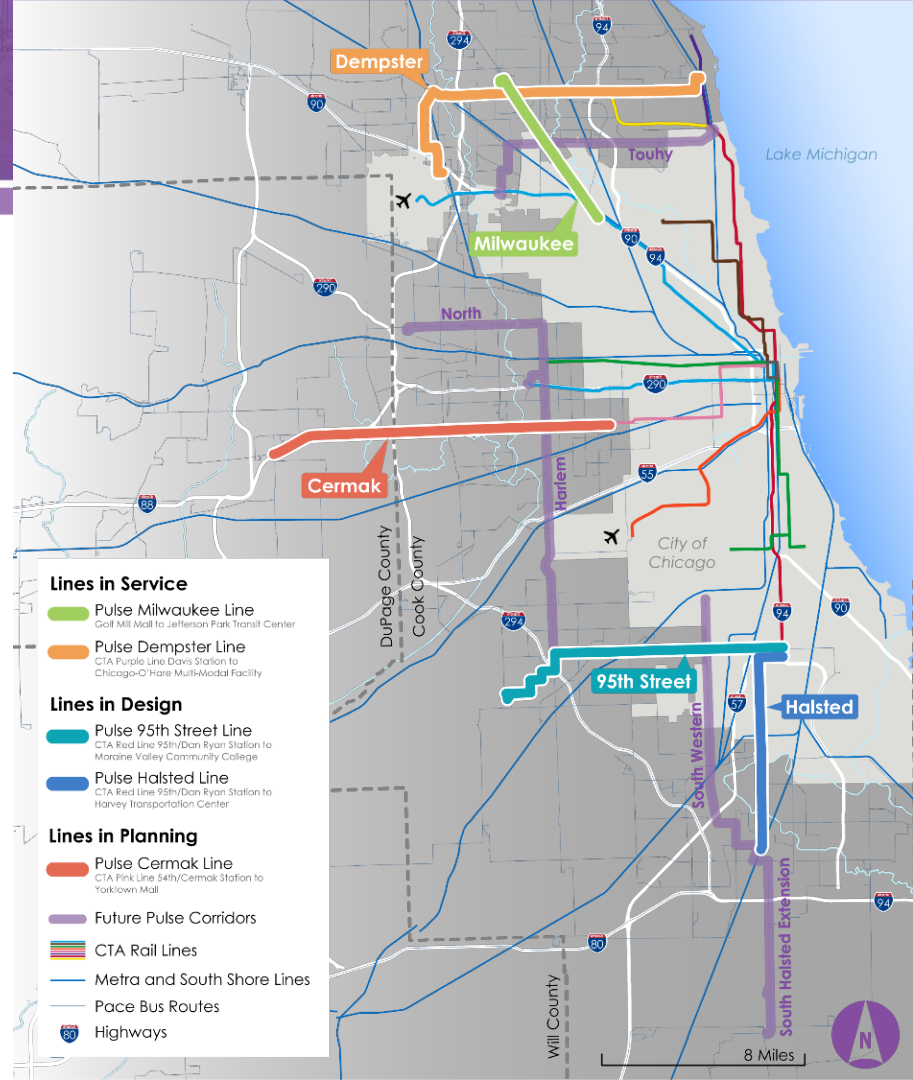
95th Street Corridor Plan

April 24, 2024



Pulse Overview

- Network of **fast, frequent, and reliable** bus service in heavily traveled corridors
- **Limited stop** service
- **Branded buses** with Wi-Fi and interior digital information screens
- Modern, easy-to-find **branded stations**
- Improved **ADA accessibility**



Lines in Service

- Pulse Milwaukee Line
Golf Mill Mall to Jefferson Park Transit Center
- Pulse Dempster Line
CTA Purple Line Davis Station to Chicago-O'Hare Multi-Modal Facility

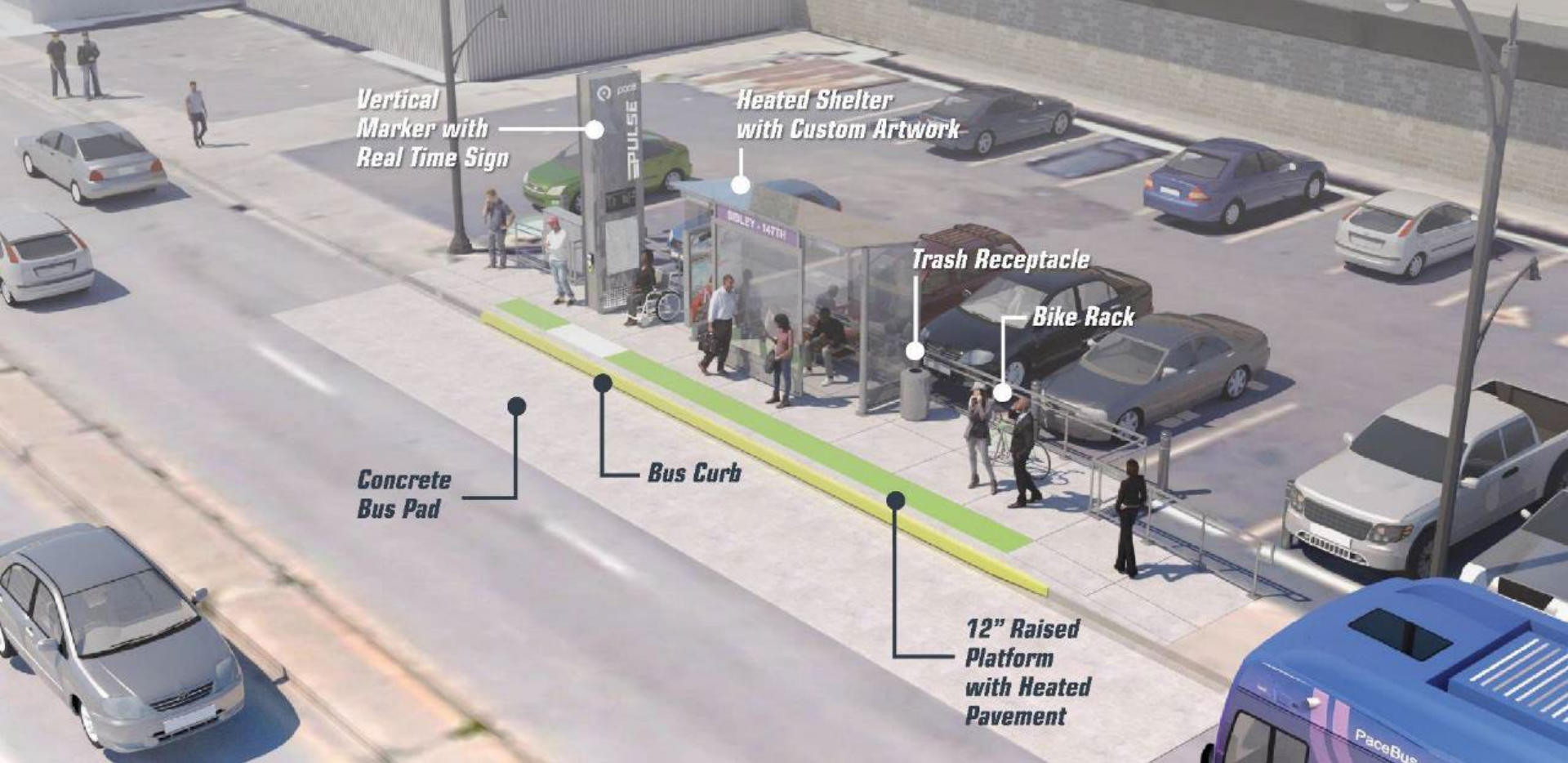
Lines in Design

- Pulse 95th Street Line
CTA Red Line 95th/Dan Ryan Station to Moraine Valley Community College
- Pulse Halsted Line
CTA Red Line 95th/Dan Ryan Station to Harvey Transportation Center

Lines in Planning

- Pulse Cermak Line
CTA Pink Line 54th/Cermak Station to Yorktown Mall
- Future Pulse Corridors

- CTA Rail Lines
- Metra and South Shore Lines
- Pace Bus Routes
- Highways



*Vertical
Marker with
Real Time Sign*

*Heated Shelter
with Custom Artwork*

Trash Receptacle

Bike Rack

*Concrete
Bus Pad*

Bus Curb

*12" Raised
Platform
with Heated
Pavement*

PULSE

Background image source: Southwest corner of 147th and Halsted, Harvey, IL. Google Maps, 2019

Existing Station at Harlem Ave & Milwaukee Ave

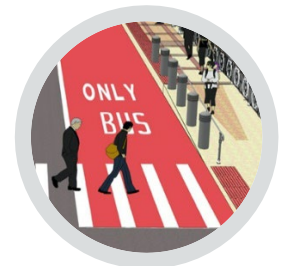




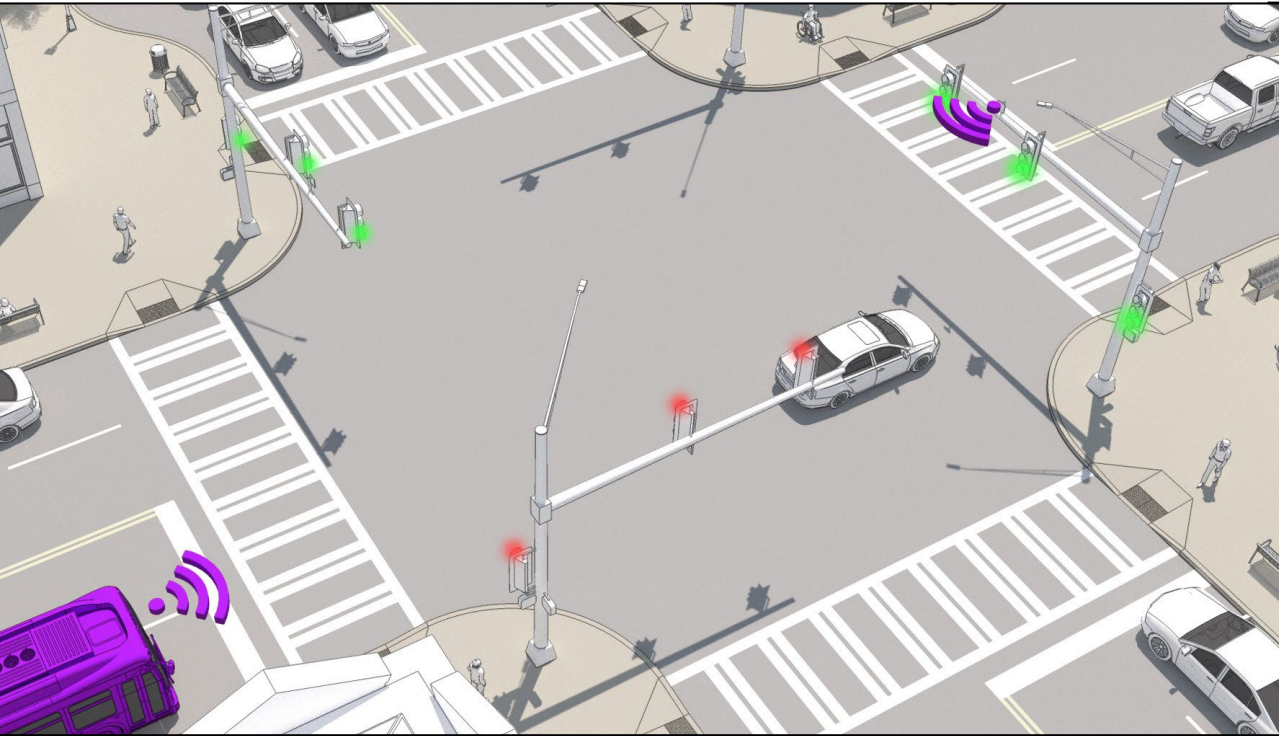
Making Pulse fast, frequent, reliable

Priority Treatments

- Transit Signal Priority
- Queue Jumps
- Dedicated Bus Lanes



What is Transit Signal Priority?



TSP works automatically to allow buses running behind schedule to catch up



Shorter wait times at lights

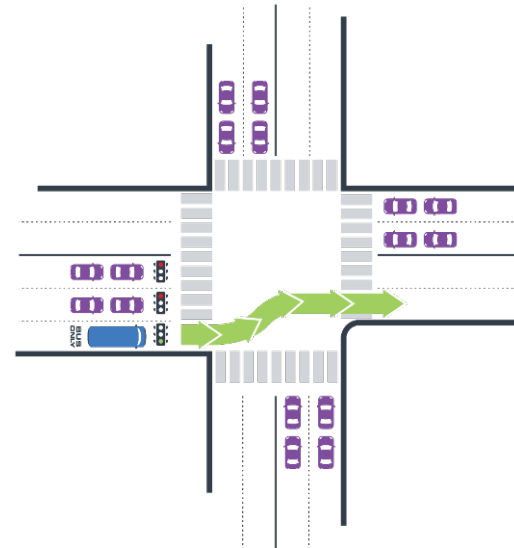
Improves reliability of transit



What are Queue Jumps?

Special lanes at signalized intersections that allow buses to bypass general traffic

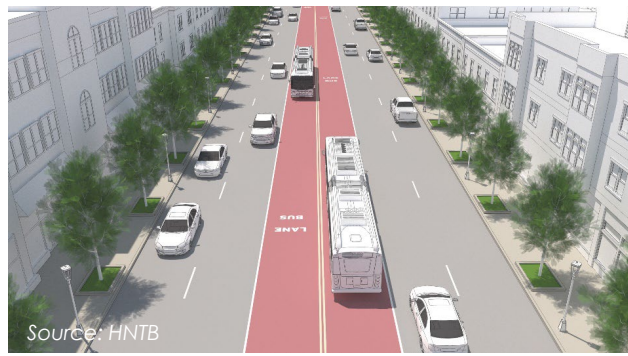
Queue jumps would be shared with right turning vehicles and feature special bus-only traffic light



What are Dedicated Bus Lanes?

Special lanes **reserved for buses** exclusively or semi-exclusively

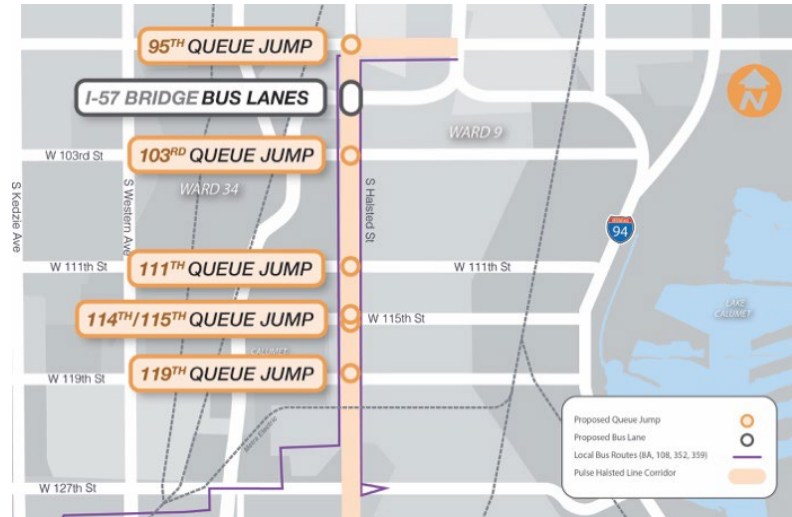
- Curbside or center running
- May use red markings

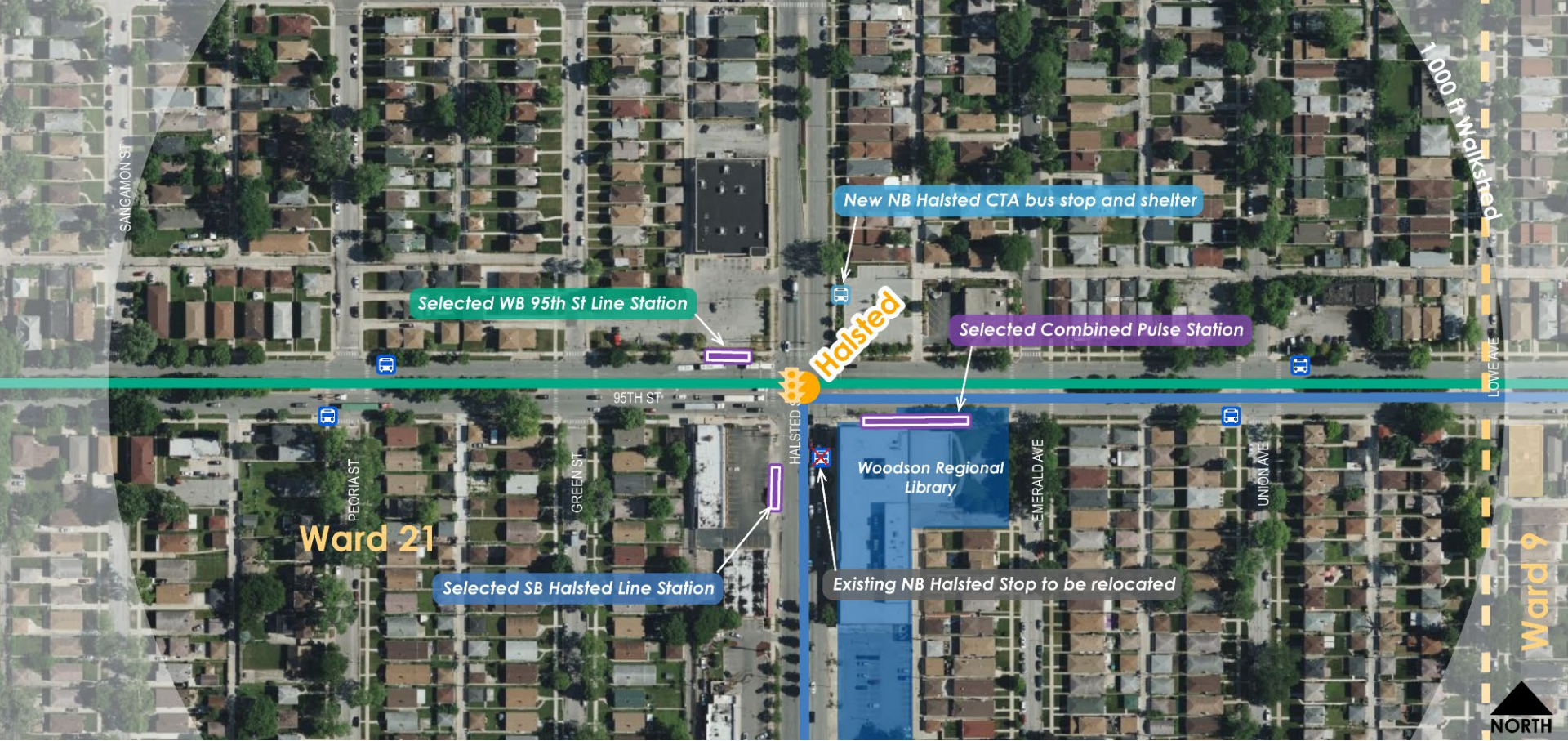


Queue Jumps & Short Bus Lanes

HALSTED LINE

- Queue jumps at congested intersections
- Bus lanes on Halsted between 98th-100th (over I-57)





Selected WB 95th St Line Station

New NB Halsted CTA bus stop and shelter

Selected Combined Pulse Station

Halsted

Woodson Regional Library

Existing NB Halsted Stop to be relocated

Selected SB Halsted Line Station

Ward 21

Ward 9



Existing Conditions 95th / Halsted



Background image source: 95th and Halsted, Chicago, IL, Google Maps, 2019

Stations and Queue Jump 95th/Halsted



Background image source: 95th and Halsted, Chicago, IL. Google Maps, 2019



Existing Conditions at 98th St



Background image source: 98th and Halsted, Chicago, IL. Google Maps, 2019

Proposed Bus Lanes at 98th St



Background image source: 98th and Halsted, Chicago, IL. Google Maps, 2019

Community Engagement to Date

HALSTED LINE

- Public meetings
 - **Halsted**: January 2020, May 2022
 - **95th**: November 2022
- Corridor Advisory Group meetings
 - **Halsted**: 2018-2019 (three meetings), April 2022
 - **95th**: December 2018, May 2019, August 2022
- 1-on-1 meetings with aldermen, property owners, and community organizations



Looking ahead

- **95th Street Line** and **Pulse Halsted Line: Final Design** starting mid 2024
- Both projects fully funded through design and construction



We want to hear from you!

HALSTED LINE

- Visit www.pacebus.com/Pulse to learn more
- Contact us directly
- Look for us at community gatherings and events
- Are there events and organizations we should visit with?



Contact Information

HALSTED LINE



Charlotte Obodzinski, AICP

Department Manager

Priority Project Management Office

Pace Suburban Bus

Charlotte.Obodzinski@PaceBus.com



PULSE
Thank you





Ed Flores



Daniel Thomas



3. Metra 95th Street/CSU Station Modernization Project

3

95TH STREET CORRIDOR STATION PROJECTS UPDATE

DPD /CTA 95th Street Corridor Plan

April 24, 2024



NEW METRA FARE STRUCTURE



Metra Fare Zones

1 2 3 4

One-Way
A one-way, single ride ticket between selected zones.

Day Pass
Unlimited rides all day between selected zones.

Day Pass 5-Pack
Ventra app only. Five Day Passes that can be used on any five days within 90 days of purchase.

	Full Fare Pricing by Zone				*Reduced Fare Pricing by Zone			
	1	1	1		1	1	1	
	2	2	2	2	2	2	2	2
		3	3	3		3	3	3
			4	4			4	4
One-Way	\$3.75	\$5.50	\$6.75	\$3.75	\$1.75	\$2.75	\$3.25	\$1.75
Day Pass	\$7.50	\$11.00	\$13.50	\$7.50	\$3.50	\$5.50	\$6.50	\$3.50
Day Pass 5-Pack	\$35.75	\$52.25	\$64.25	\$35.75	\$17.50	\$26.00	\$32.00	\$17.50

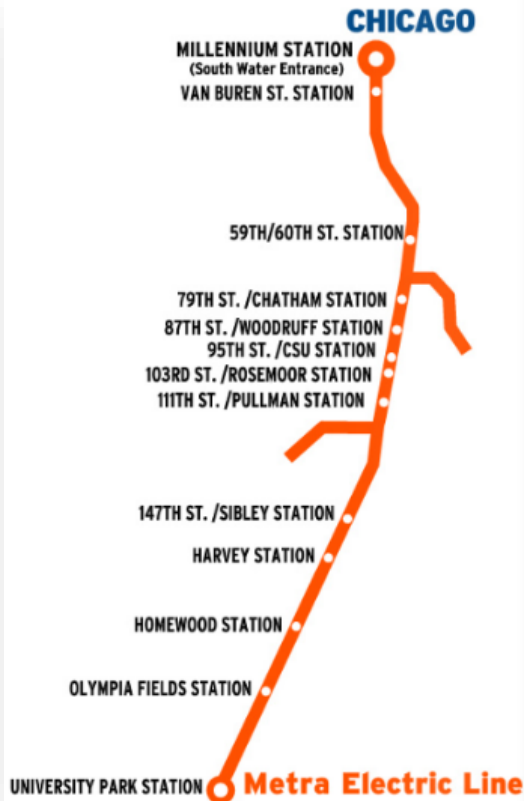


METRA ELECTRIC STATION REHABILITATIONS

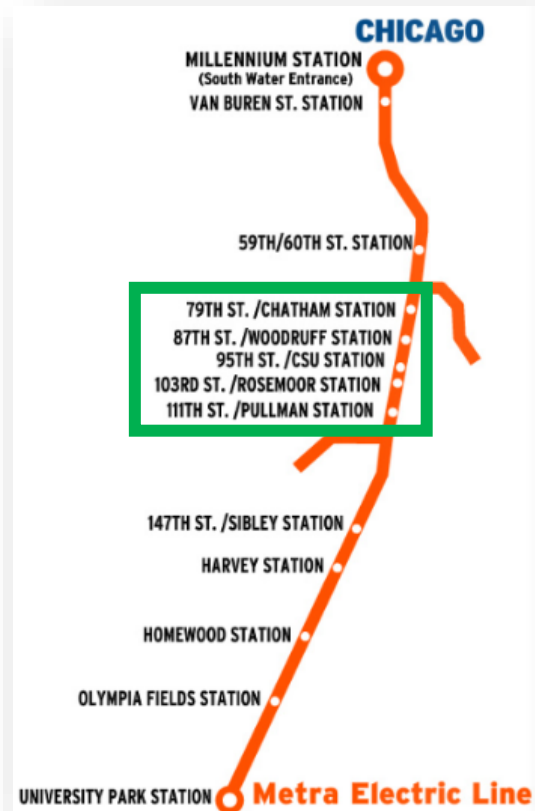
Metra Electric Station Program summary:

- \$200M programmed through 2025
- Renovation of 13 stations
- ADA accessibility for all 13 stations
- Improved user amenities / better user experience
- Phased implementation; no two adjacent stations will be closed

Source: Metra 2020 Fact Book



METRA ELECTRIC 95TH CORRIDOR AREA STATION PROJECTS



Under Construction:

- 79th Street
- 103rd Street

Construction to Start in 2024:

- 87th Street
- 95th Street

In Design:

- 111th Street



95TH STREET STATION PROJECT INFORMATION

Current Status:

- Currently procuring construction contractor
- Permits pending

Funding Sources:

- FTA-All Stations Accessible Program (ASAP) Grant
- Cook County
- Illinois State Bonds
- RTA Bonds

Milestones Completed:

- Station design
- Environmental clearances (NEPA)
- Rezoning



95TH STREET STATION EXISTING CONDITIONS



95TH STREET STATION PROJECT SCOPE

- Well-lit highly visible entrance on 95th St
- New 2nd station entrance near CSU campus
- New elevators & stairs at each entrance
- Security cameras
- Headhouses with on-demand heating
- Platform reconstruction with full canopy
- New ticket vending machines
- Waterproofing Metra portion of viaduct
- Improved viaduct lighting
- 115-space commuter lot with kiss-n-ride
- Rebuilt CSU access road & turn around
- Walkways, signage & wayfinding
- Vendor space
- Service increases after project completion

Note: Project scope does not improve any CN railroad infrastructure



95TH STREET STATION DESIGN



Existing Project Site



Proposed Station Pavilion



95TH STREET STATION DESIGN



Existing Entrance



Proposed North Entrance



95TH STREET STATION DESIGN



Existing Entrance, Street View



Proposed Street View, North Entrance



95TH STREET STATION PROPOSED PLANS



Proposed South Entrance



95TH STREET STATION DESIGN



Proposed Platform and Canopy



95TH STREET STATION DESIGN



Existing Stair Headhouse



Proposed Interior Headhouse at the Platform Level



CONTACT INFORMATION

Ed Flores

Project Manager, Stations and Parking

(815) 342-8392

EdFlores@metrarr.com

David Kralik

Director, Planning and Programming

(312) 322-8035

DKralik@metrarr.com

Metra Website: <https://metra.com>





Corridor Plan

Q&A



Sonali Tandon,
Senior Manager for Strategic Planning



RED AHEAD



**Red Line
Extension**



Red Line Extension

95th Street Corridor

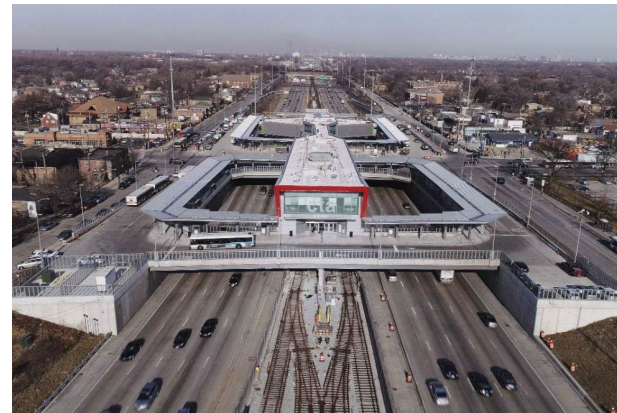
Public Meeting

April 24, 2024



Reconstruction Project

- Newly built station opened in 2019
- \$280 million construction cost
- Station features include:
 - Two terminals on the north and south sides of 95th Street
 - New station building with bright, airy spaces and clear sightlines
 - Improved service and directional signage
 - Safer pedestrian walkways to bus pickup areas and the rail terminal
 - More turnstiles and Ventra vending machines for customer convenience
 - Additional bike racks, CTA Transit Tracker displays and high-definition security cameras



Project Overview

RED AHEAD



- 5.6-mile Red Line extension from the 95th Street Terminal to 130th Street
- Four new stations at 103rd Street, 111th Street, Michigan Avenue, and 130th Street
- Parking and bus connections at each new station
- New train storage yard and maintenance facility at 120th Street



Four New Accessible Rail Stations

RED AHEAD



Note: conceptual renderings, for illustrative purposes only.





IMPROVING THE TRANSIT SYSTEM

RLE will provide up to 30-minute time savings to riders traveling from the future 130th Street station to the Loop and facilitate access to multiple CTA rail lines and bus routes.



A BETTER SYSTEM FOR EVERYONE

RLE will help Far South Side residents reliably access jobs and opportunities outside their neighborhoods, which includes jobs within communities along the RLE project footprint and throughout the region.



CREATING OPPORTUNITIES

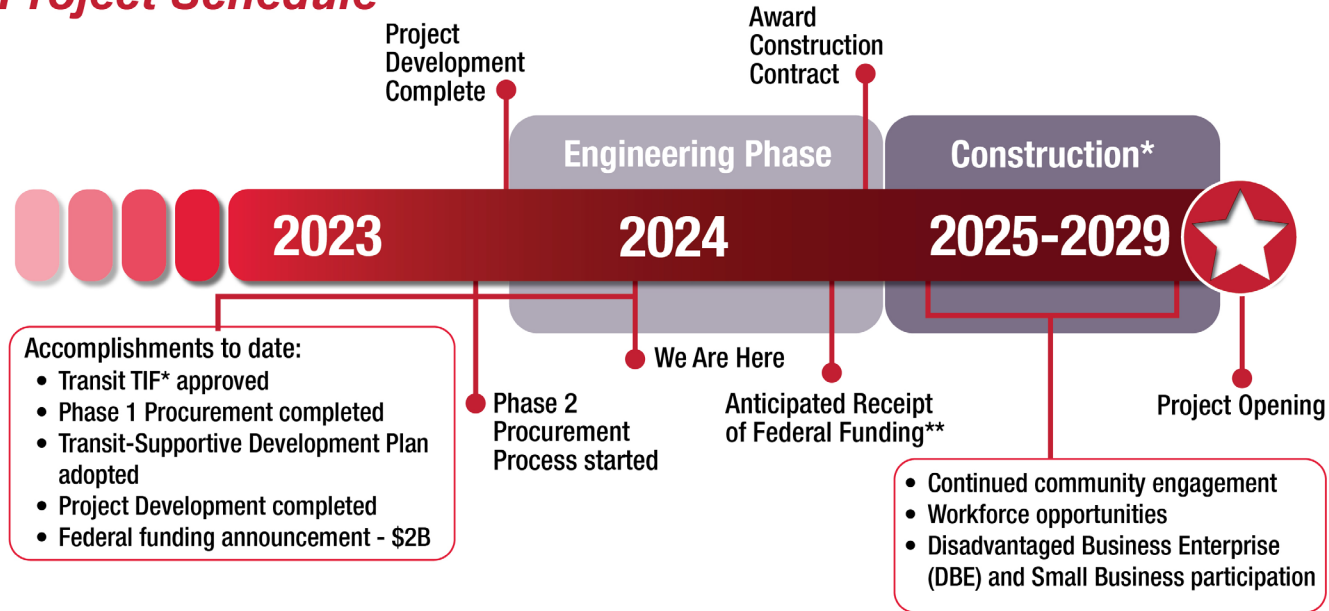
RLE will pay dividends locally during construction and, once implemented, RLE is estimated to generate more than 25,000 jobs throughout Cook County in the coming years.



CONNECTING PEOPLE & INVESTING IN NEIGHBORHOODS

RLE will be one of the single biggest investments on the Far South Side in decades and is a critical investment for CTA to expand its rapid transit network. RLE is estimated to catalyze, or set the table, for \$1.7 billion in real estate development in the ½ mile station area between 2029-2040.

Project Schedule



- Adopted by Chicago Plan Commission
- Guiding document for future plans/development



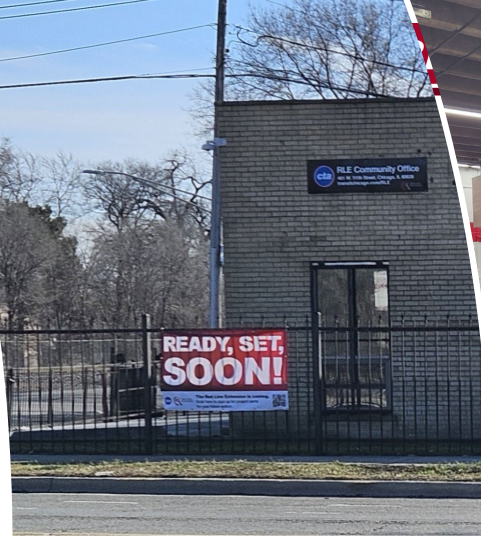
- American Planning Association – IL Chapter 2023 Strategic Plan Award



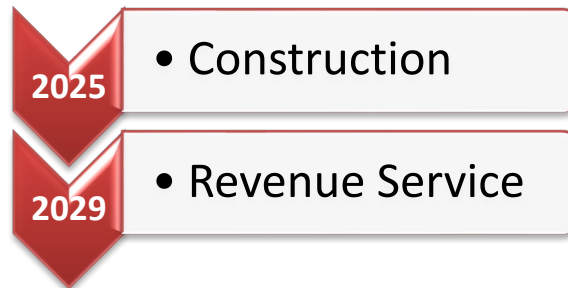
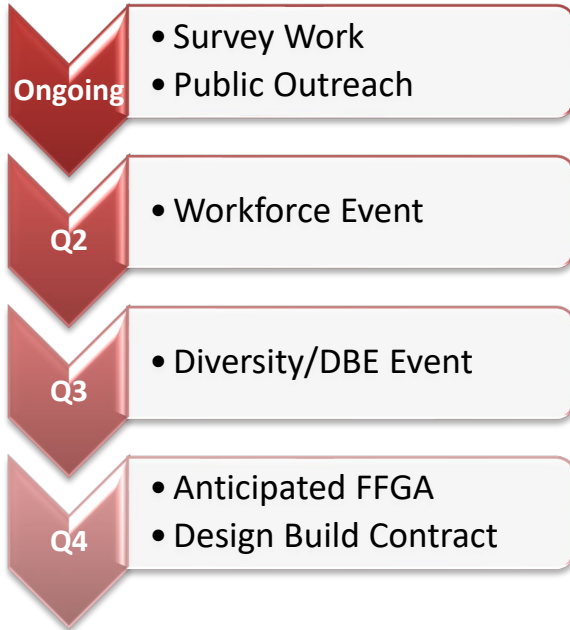
- Frequently updated website and social media pages
- Newsletters and e-blasts
- Meetings with local Aldermen and presentations at aldermanic townhalls
- Attendance at community events to share RLE updates and information
- Public/stakeholder meetings
- Workforce events
- “Meet the Contractors” events with the short-listed design-build firms

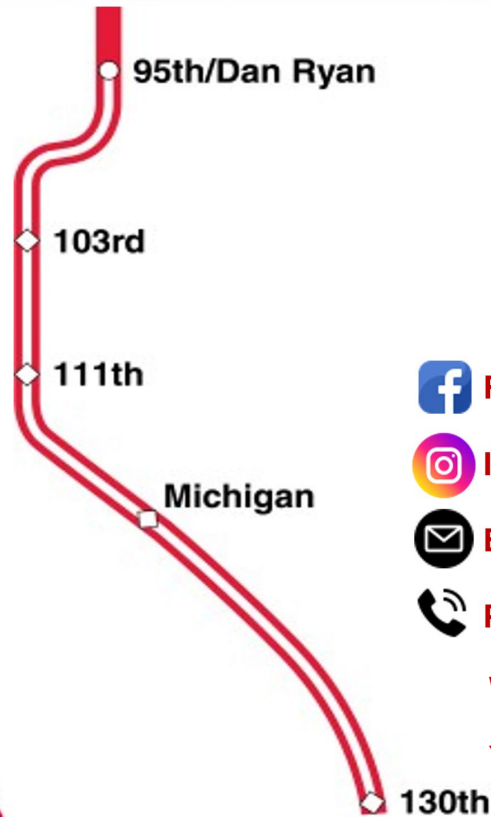


**RLE
Team
in
the
community**



2024





Thank you!

#RLEReady



Facebook

[Facebook.com/CTARedExt](https://www.facebook.com/CTARedExt)



Instagram

[@CTARLE](https://www.instagram.com/CTARLE) (@CTARedExt)



Email

RedExtension@transitchicago.com



Phone

(312) 772-2272

Web

transitchicago.com/rle

YouTube

<http://tinyurl.com/5n73jcf4>



February 3rd Open House What We've Heard



Existing Conditions Open House

- **Date and Location:** February 3, 2024 10AM – 2PM at Imani Village, 901 E 95th
- **Purpose:** Gather feedback on existing conditions along the corridor to inform future development within **6 topic areas**.
- **Facilitators:** Facilitated by teams of Community Advisory Group members and technical consultants.



The Existing Conditions Open House at Imani Village had 6 stations areas to get feedback on different elements of the community (Credit: DPD)

237 attendees

> 400 comments

25 community facilitators

9 partner agencies represented



Main Takeaways

Community Voices

- High **pride** in the community
- Strong sense of **belonging**
- Positive political representation
- **Desire** to improve the community

Equitable Development

- Desire for **redevelopment**
- Maintain **community character**
- Diverse **housing typologies** for a range of family types

Community Wealth Building

- Strong interest in improving **business community**
- Improve opportunities for **local residents to increase wealth**

Environment

- Safe and high quality **green and public space** is important for all ages
- Efforts needed to reduce **environmental justice** burdens

Health and Wellness

- Improve access to **mental health and holistic health** services
- Better **food options** needed to address health inequities



Mobility and Safety

- Improve **traffic comfort**
- Improve **walking and biking**
- Improve **access** to transit

The following slides provide a more in-depth summary



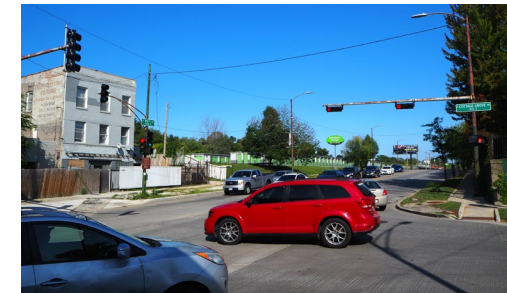
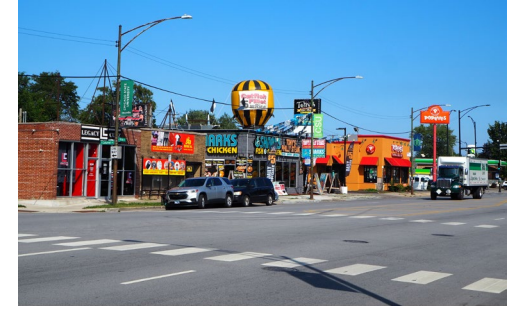
Focus area for today's meeting

Traffic comfort

Traffic speeds, freight traffic, underpass, and many buses create **low comfort conditions** and **traffic safety issues** for vehicles and pedestrians.

Driving continues to be the most common **mode of transportation** with high traffic stress nodes at **95th/Dan Ryan Red Line station area** and **CSU/95th St Metra Underpass**.

Speed cameras and red light cameras create **financial burden** and are not desired.



Walking & Biking

Strong community feedback in support of **better network for walking and biking**

Main barriers to active travel currently are **sidewalk conditions** and **poor sense of security** particularly at night.

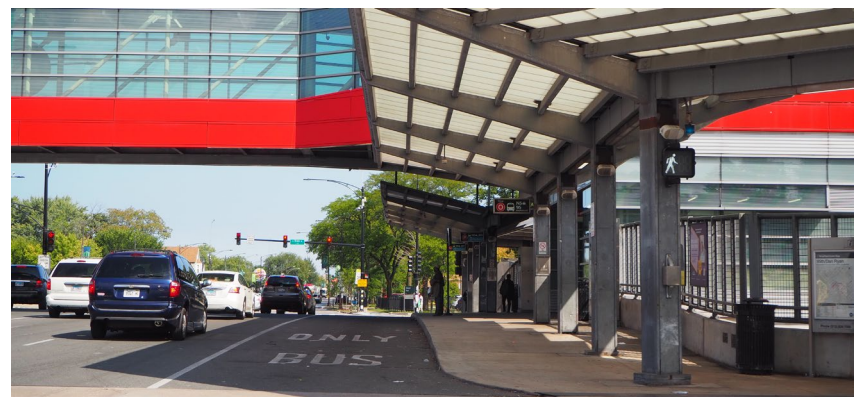
Other needs feedback : **bike route signage, trash receptacles**, and more / safer **pedestrian crossings**.



Access to Transit

Transit network is considered **strong and robust**.

Desire for **safety at / near transit stations**.

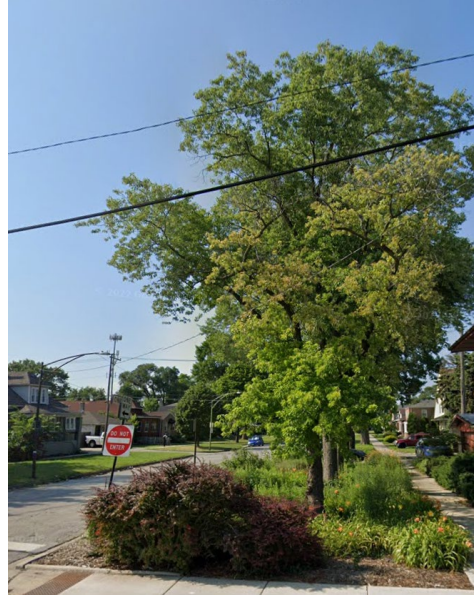


Community Placemaking

Desire for a **community gateway marker** and enhanced corridor branding to raise awareness of neighborhood corridor

Public projects such as art should have a community engagement process and prioritize **local artists**.

Need to improve access to clean and safe open spaces.



95th Street Corridor Plan

Draft Multimodal Connectivity Strategies

AECOM



Kevin Polk



Aude Bottineau

Multimodal Connectivity Framework Elements



Transit



Roadway



Bicycle



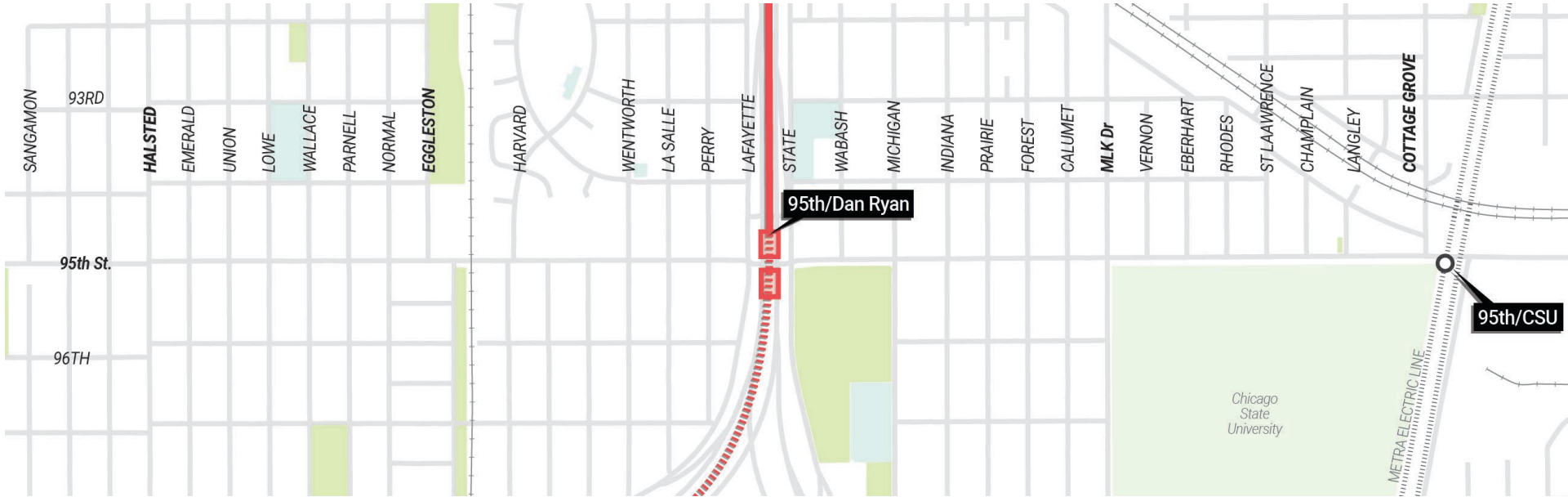
Streetscape



Placemaking



Technology





Transit Strategies



Corridor Plan

Legend

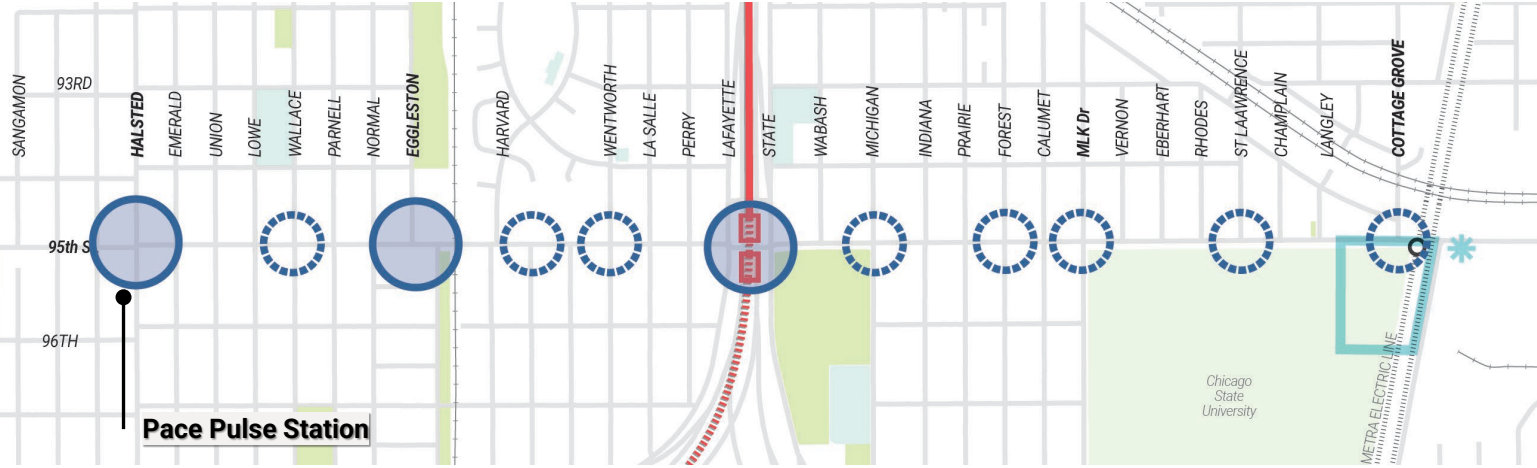
Planned Transit Projects

- CTA Red Line Extension
- PACE Pulse Station
- CSU/95th Metra Station Renovation & Access Area

Additional Strategies

- Bus Shelter
- Transit Signage Pylon

Proposed locations are conceptual and subject to change pending further studies and community engagement.



Pace Pulse Station



Transit Strategies



Corridor Plan

Legend

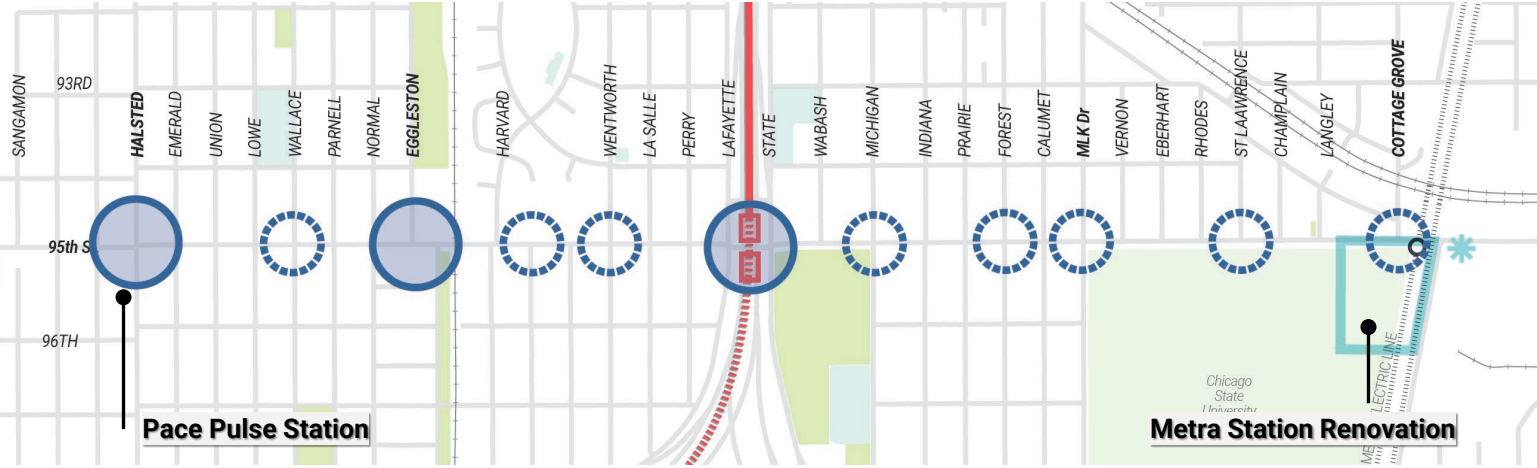
Planned Transit Projects

- CTA Red Line Extension
- PACE Pulse Station
- CSU/95th Metra Station Renovation & Access Area

Additional Strategies

- Bus Shelter
- Transit Signage Pylon

Proposed locations are conceptual and subject to change pending further studies and community engagement.



Pace Pulse Station

Metra Station Renovation



Pace Pulse Station



Metra Station Renovation



Transit Strategies



Corridor Plan

Legend

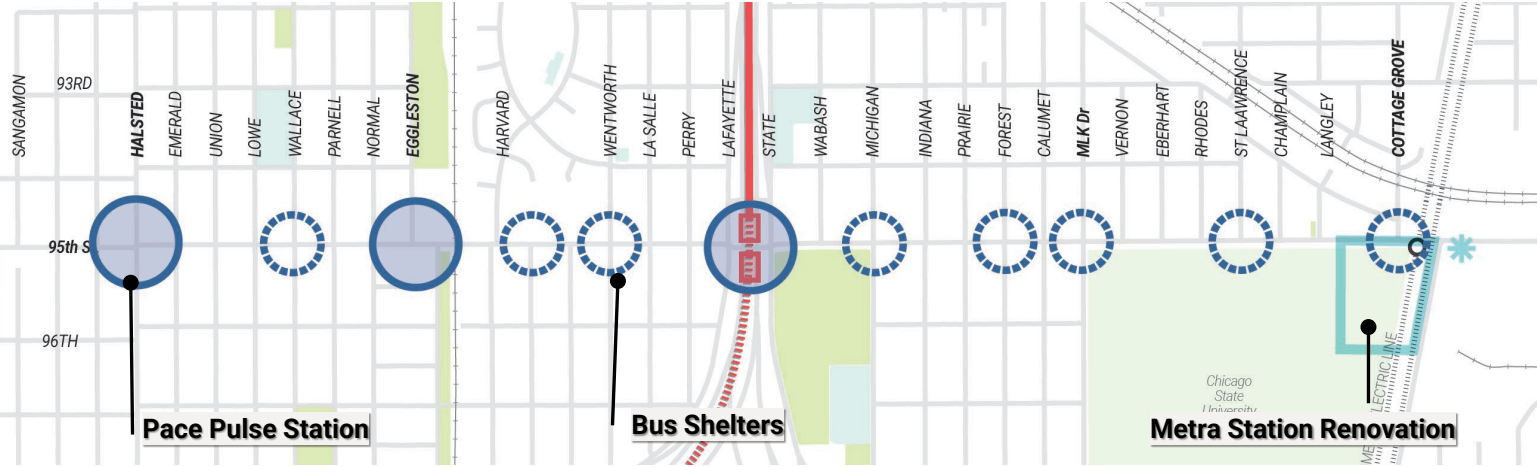
Planned Transit Projects

- CTA Red Line Extension
- PACE Pulse Station
- CSU/95th Metra Station Renovation & Access Area

Additional Strategies

- Bus Shelter
- Transit Signage Pylon

Proposed locations are conceptual and subject to change pending further studies and community engagement.



Pace Pulse Station



Metra Station Renovation



Bus Shelters



Transit Strategies



Corridor Plan

Legend

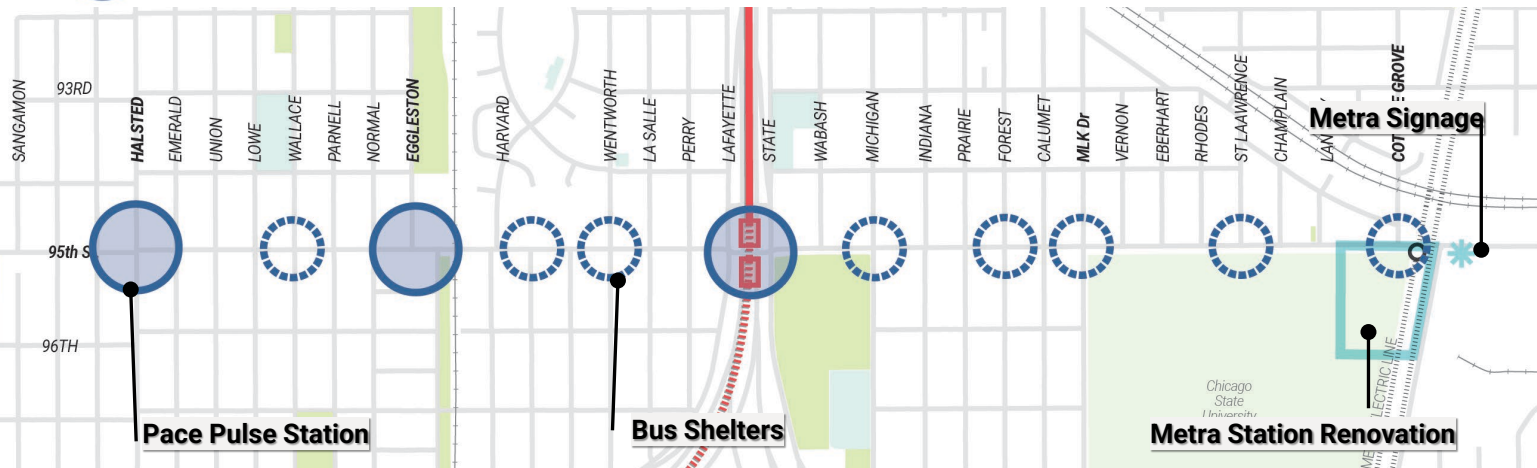
Planned Transit Projects

- CTA Red Line Extension
- PACE Pulse Station
- CSU/95th Metra Station Renovation & Access Area

Additional Strategies

- Bus Shelter
- Transit Signage Pylon

Proposed locations are conceptual and subject to change pending further studies and community engagement.



Pace Pulse Station



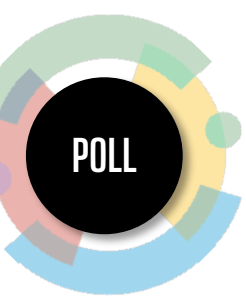
Metra Station Renovation



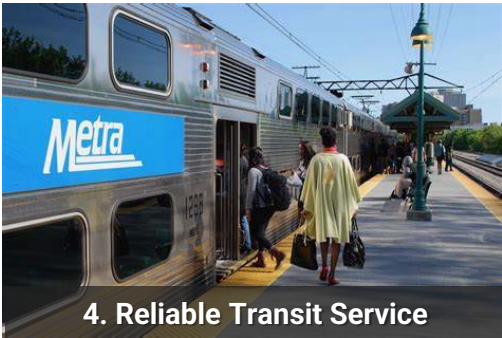
Bus Shelters



Metra Signage



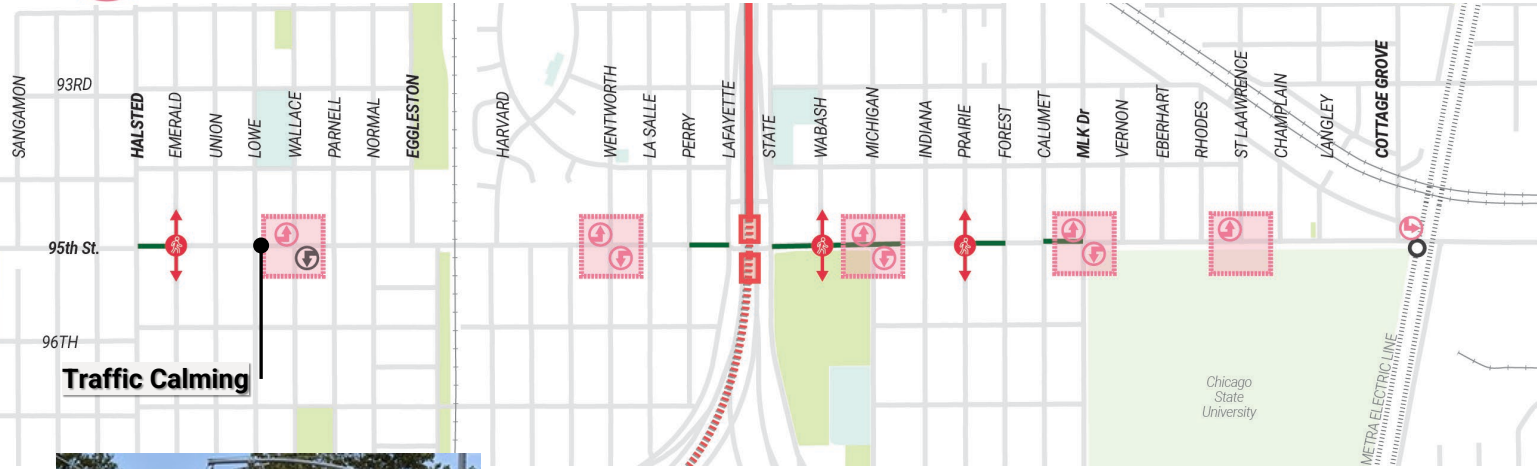
Which three things would help you utilize **public transit** along 95th St?



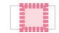




Other ideas or questions to improve transit access? Please type them in the chat.



Roadway



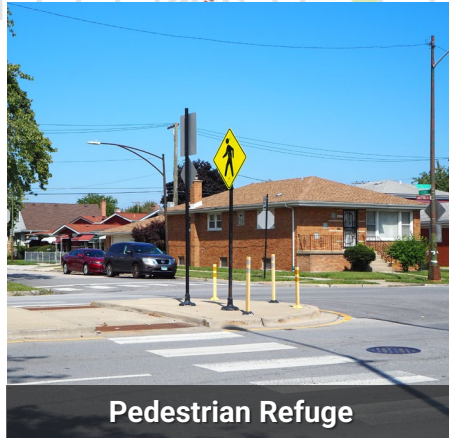
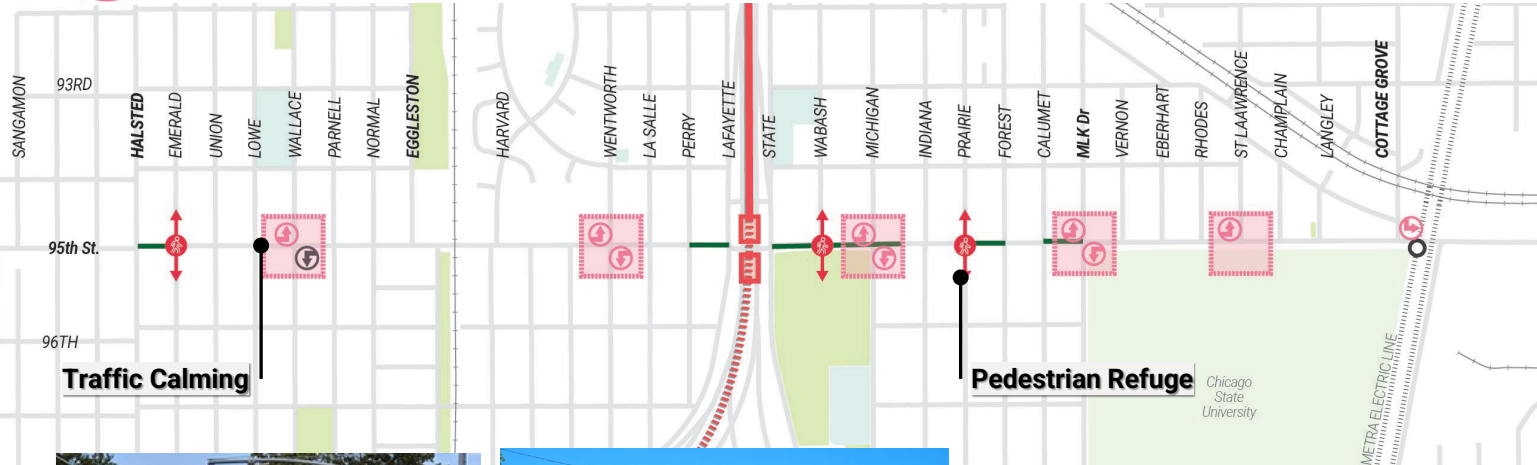
Proposed Improvements

-  Traffic Calming
-  Left-Turn Safety Improvements
-  Left-Turn Lane Creation
-  New Planted Median
-  Pedestrian Refuge

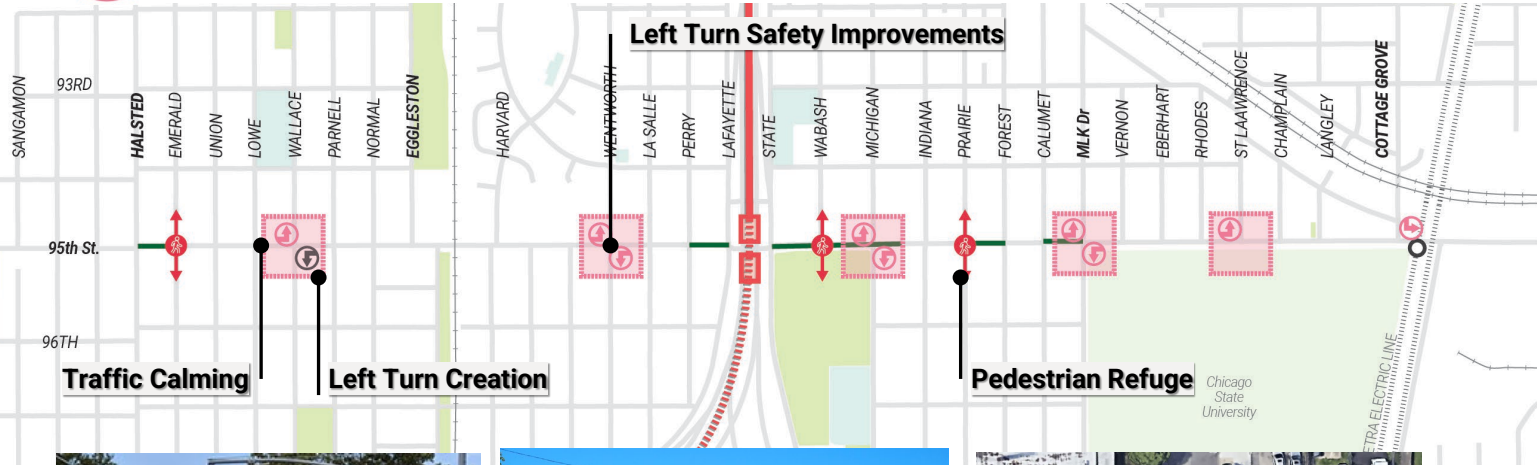
Proposed locations are conceptual and subject to change pending further studies and community engagement.



Roadway



Roadway



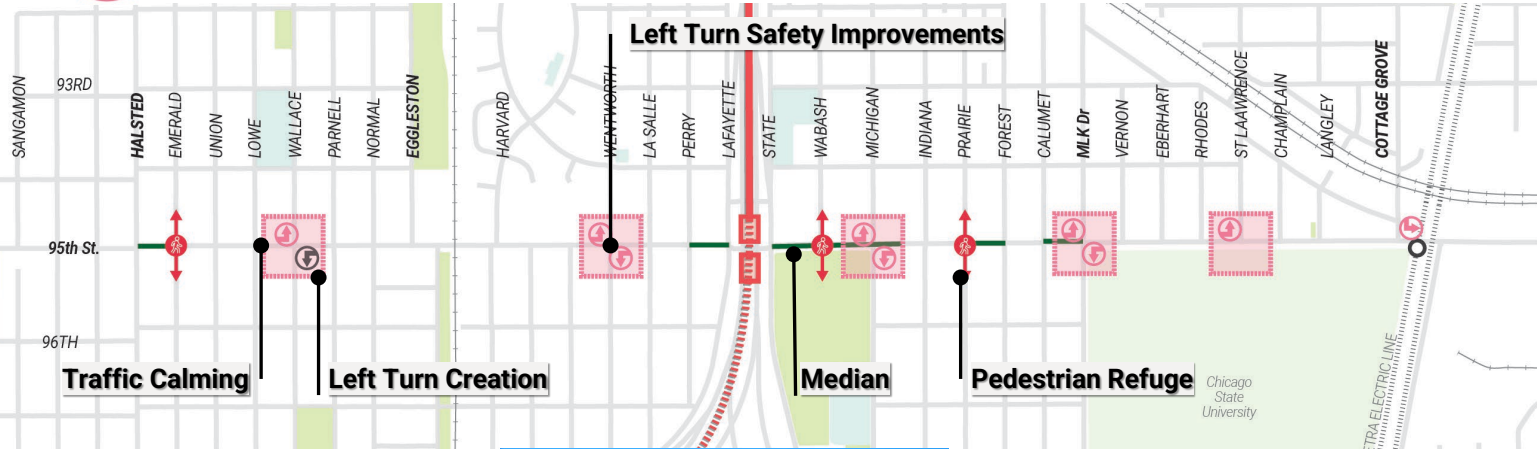
Proposed Improvements

- Traffic Calming
- Left-Turn Safety Improvements
- Left-Turn Lane Creation
- New Planted Median
- Pedestrian Refuge

Proposed locations are conceptual and subject to change pending further studies and community engagement.



Roadway

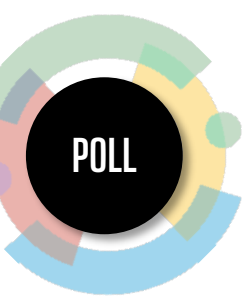


Proposed Improvements

- Traffic Calming
- Left-Turn Safety Improvements
- Left-Turn Lane Creation
- New Planted Median
- Pedestrian Refuge

Proposed locations are conceptual and subject to change pending further studies and community engagement.





Which three Roadway strategies would you prioritize on 95th St.?



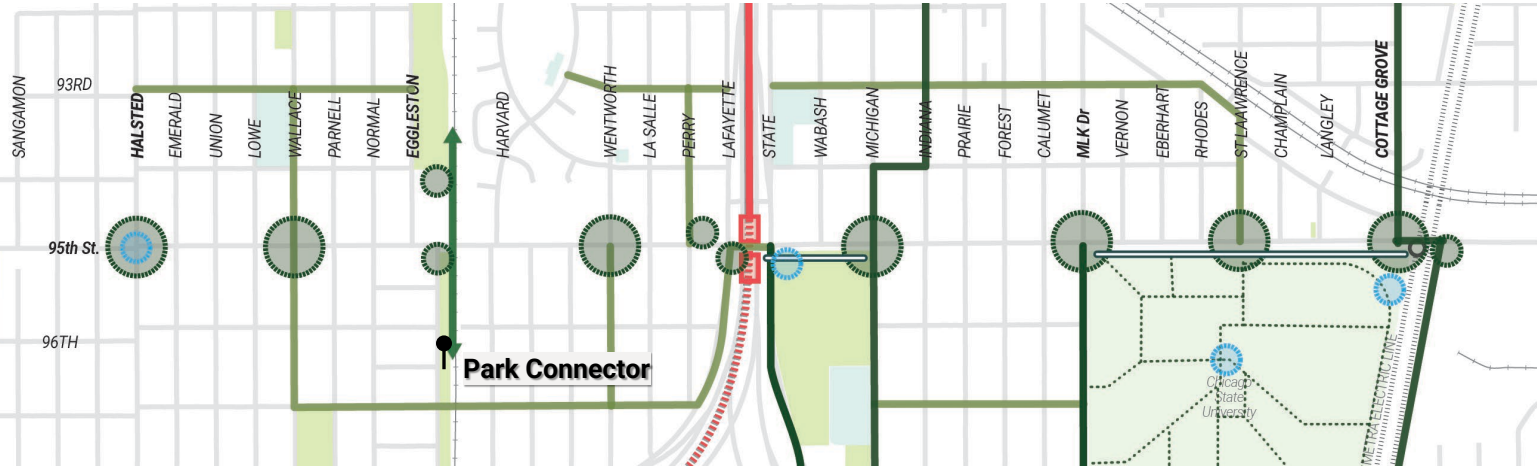
Other ideas or questions to improve traffic safety & mitigate speeds? Please type them in the chat.



Bicycle



Corridor Plan



Existing

- Existing Bike Routes
- CSU shared use path network

Proposed Improvements

- Neighborhood Bike Routes with Signage
- Robicieux-Fernwood Connector
- Shared Use Path
- Bike Park Hub
- Divvy Station

Proposed locations are conceptual and subject to change pending further studies and community engagement.



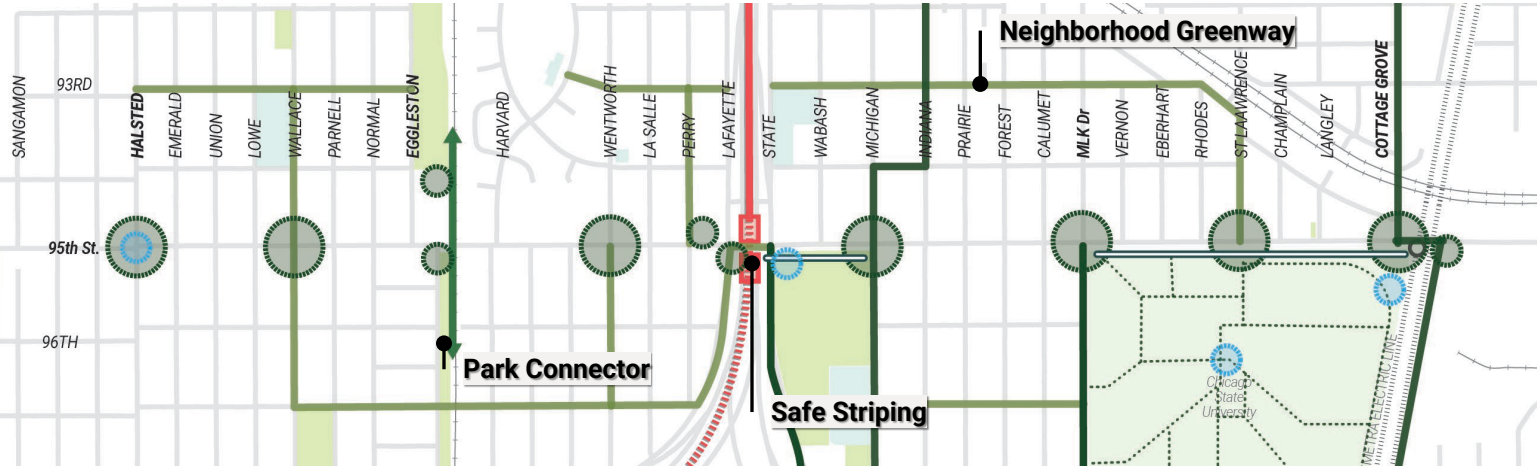
Robicieux to Fernwood Park Connection



Bicycle



Corridor Plan



Existing

- Existing Bike Routes
- CSU shared use path network

Proposed Improvements

- Neighborhood Bike Routes with Signage
- Robicheaux-Fernwood Connector
- Shared Use Path
- Bike Park Hub
- Divvy Station

Proposed locations are conceptual and subject to change pending further studies and community engagement.



Robicheaux to Fernwood Park Connection



Neighborhood Greenway and safe striping



Bicycle



Corridor Plan



Existing

- Existing Bike Routes
- CSU shared use path network

Proposed Improvements

- Neighborhood Bike Routes with Signage
- Robicheaux-Fernwood Connector
- Shared Use Path
- Bike Park Hub
- Divvy Station

Proposed locations are conceptual and subject to change pending further studies and community engagement.



Robicheaux to Fernwood Park Connection



Neighborhood Greenway and Safe Striping



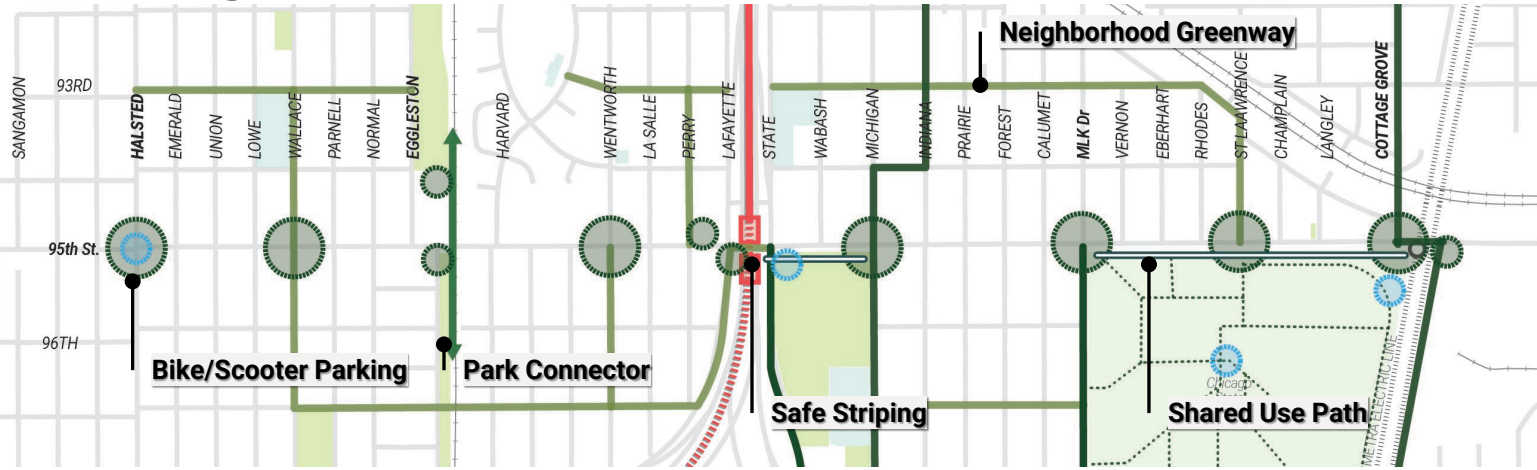
Bike/Scooter Parking

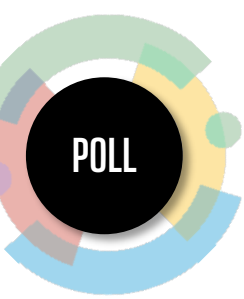


Bicycle



Corridor Plan





Which three of these **Bicycle** strategies would you prioritize in the corridor?

Select top 3



1. Robicheaux to Fernwood Park Connection



2. Neighborhood Greenway and Safe Striping



3. Bike/Scooter Parking



4. Shared Use Path



5. Bike Signage and Wayfinding

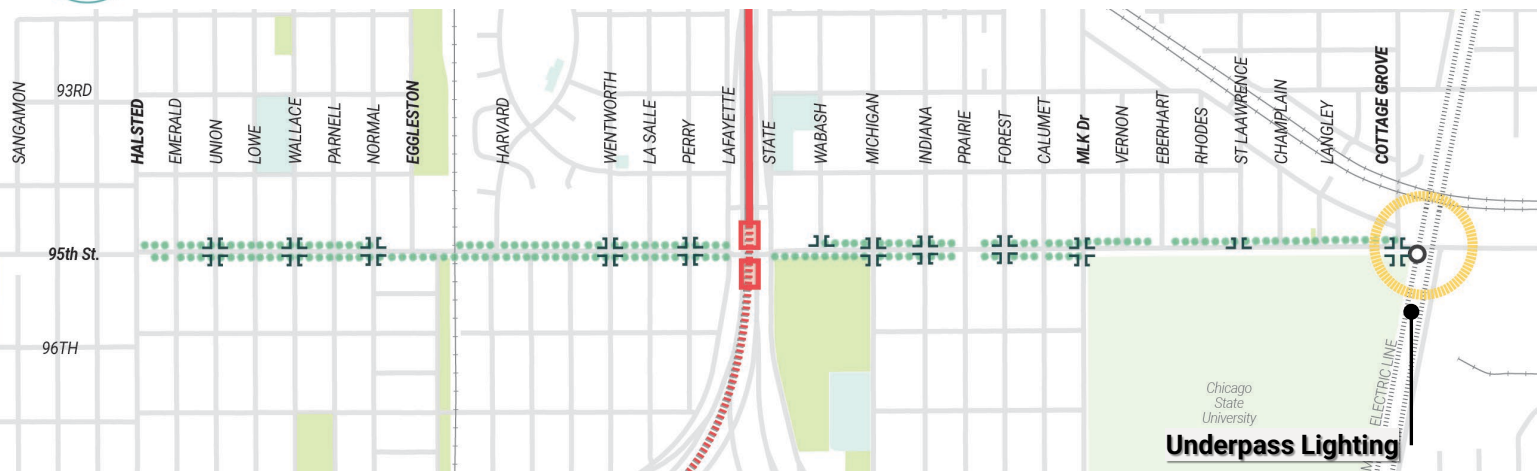
Other ideas to improve bikeability? Please type them in the chat.



Streetscape



Corridor Plan



Proposed Improvements

-  Curb Extension & raised sidewalks
-  Underpass Lighting
-  Sidewalk Improvements with Continued Tree Planted Parkway

Proposed locations are conceptual and subject to change pending further studies and community engagement.



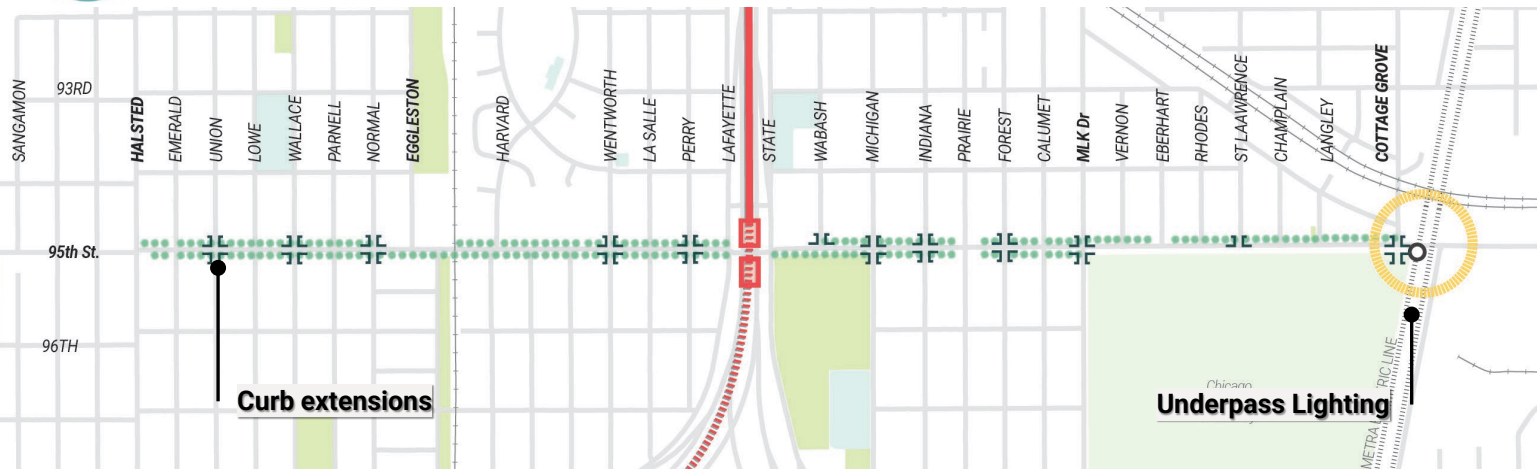
Underpass Lighting



Streetscape



Corridor Plan



Proposed Improvements

-  Curb Extension & raised sidewalks
-  Underpass Lighting
-  Sidewalk Improvements with Continued Tree Planted Parkway

Proposed locations are conceptual and subject to change pending further studies and community engagement.



Underpass Lighting



Curb Extensions



Streetscape



Corridor Plan



Proposed Improvements

-  Curb Extension & raised sidewalks
-  Underpass Lighting
-  Sidewalk Improvements with Continued Tree Planted Parkway

Proposed locations are conceptual and subject to change pending further studies and community engagement.



Underpass Lighting



Curb Extensions



Continuous Planted Parkway & Sidewalk Improvements



Streetscape



Corridor Plan



Proposed Improvements

-  Curb Extension & raised sidewalks
-  Underpass Lighting
-  Sidewalk Improvements with Continued Tree Planted Parkway

Proposed locations are conceptual and subject to change pending further studies and community engagement.



Underpass Lighting



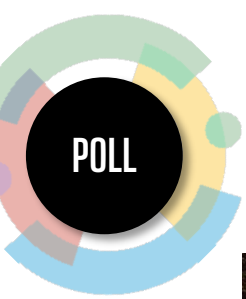
Curb Extensions



Continuous Planted Parkway & Sidewalk Improvements



Signage and Wayfinding



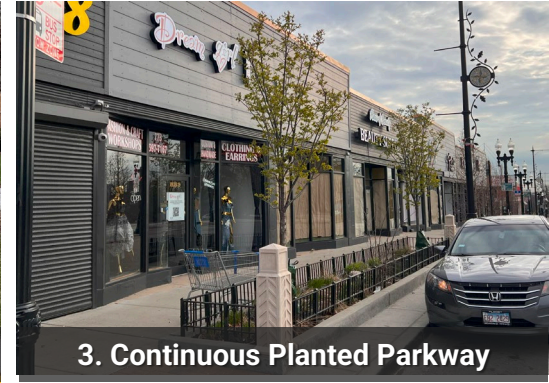
Which three of these Streetscape improvements would you prioritize on 95th St.? Corridor Plan



1. Underpass Lighting



2. Curb Extension



3. Continuous Planted Parkway



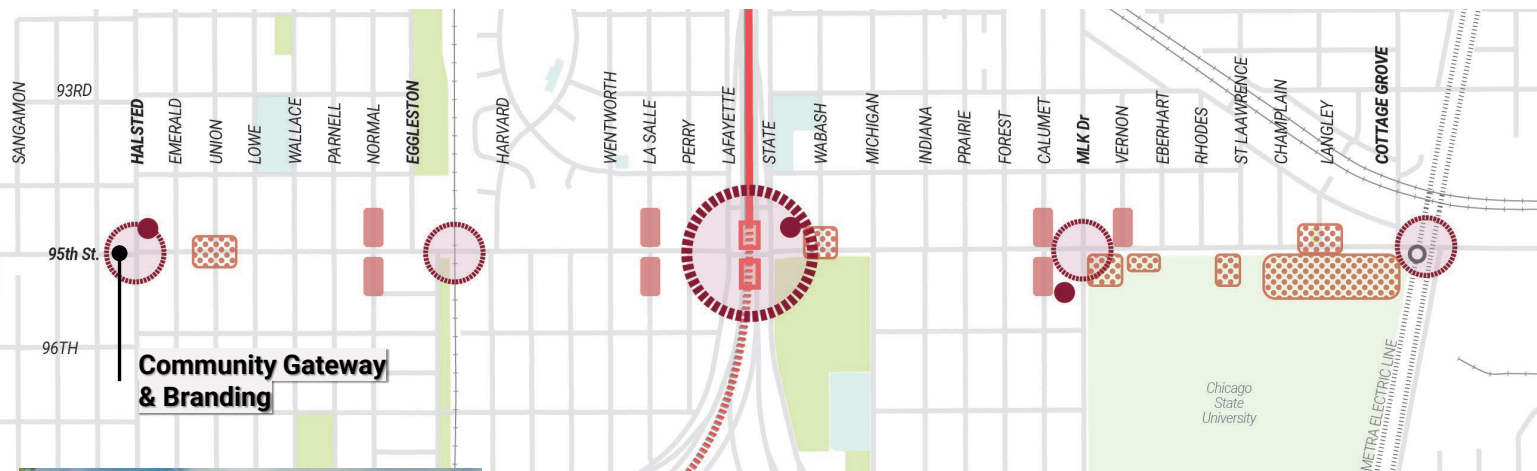
4. Sidewalk improvements



5. Signage & Wayfinding

Other ideas to improve walkability? Please type them in the chat.

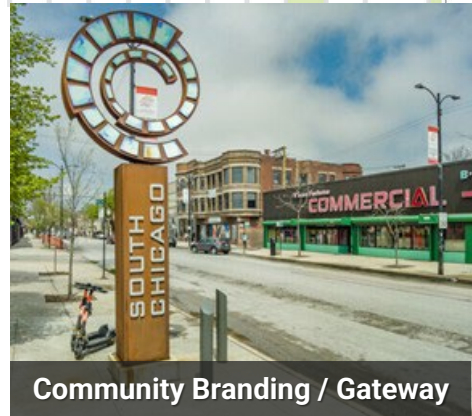
Placemaking



Proposed Improvements

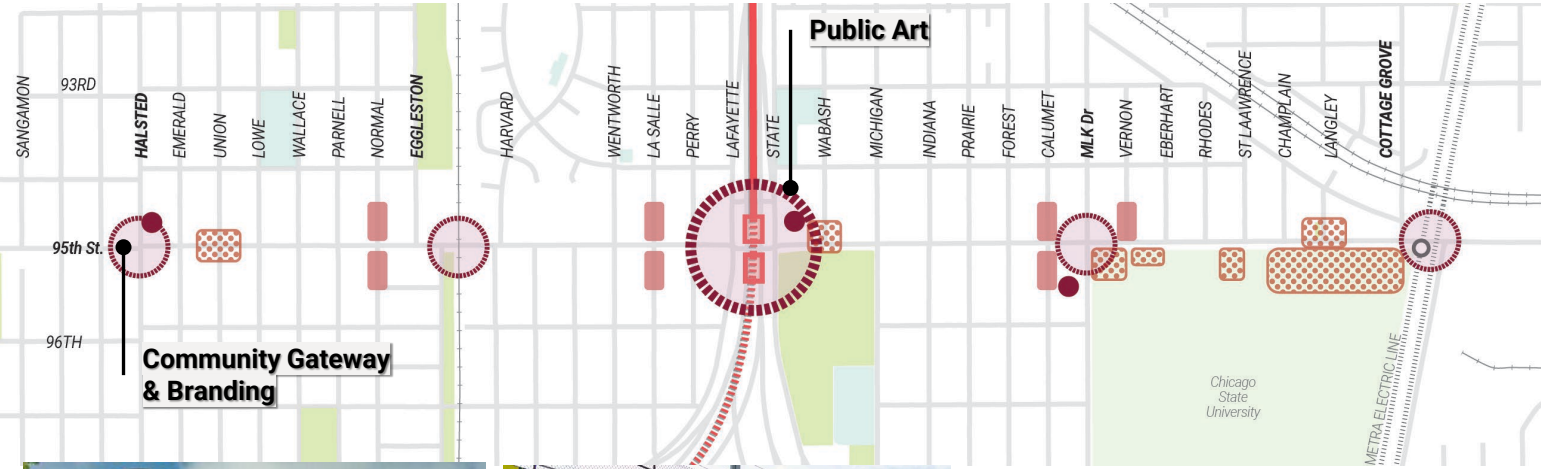
-  Gateway Markers
-  Plaza / Open Space Activation
-  Temporary Street Activation
-  Public Art

Proposed locations are conceptual and subject to change pending further studies and community engagement.



Community Branding / Gateway

Placemaking



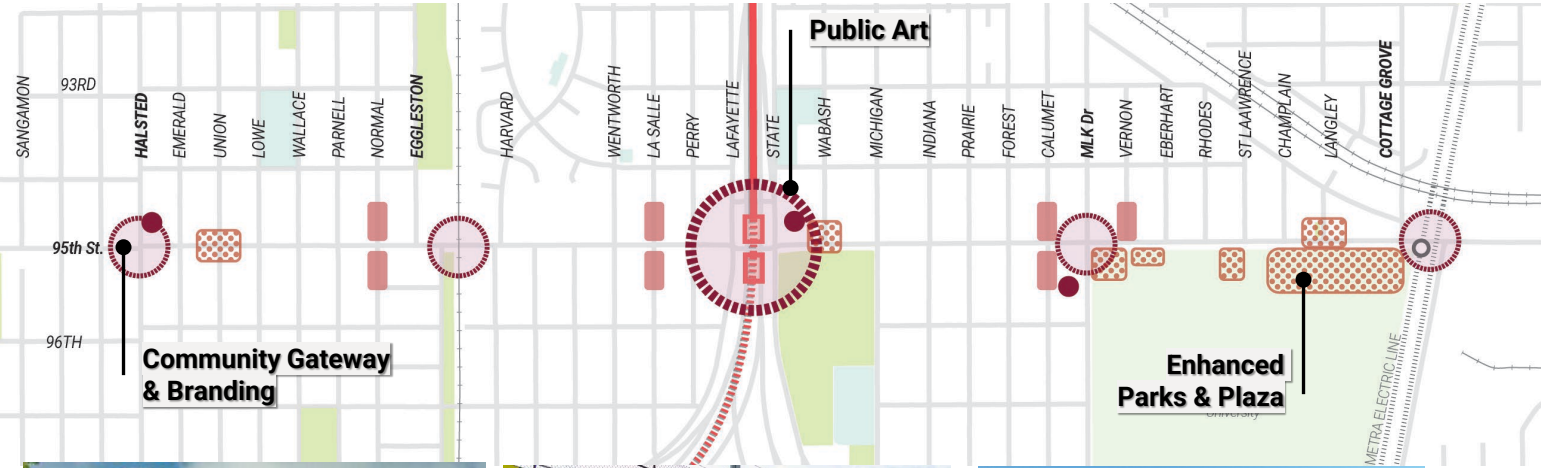
Proposed Improvements

-  Gateway Markers
-  Plaza / Open Space Activation
-  Temporary Street Activation
-  Public Art

Proposed locations are conceptual and subject to change pending further studies and community engagement.



Placemaking



Proposed Improvements

-  Gateway Markers
-  Plaza / Open Space Activation
-  Temporary Street Activation
-  Public Art

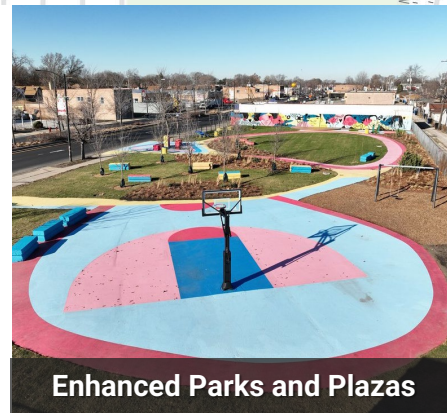
Proposed locations are conceptual and subject to change pending further studies and community engagement.



Community Branding / Gateway



Public Art



Enhanced Parks and Plazas

Placemaking



Proposed Improvements

-  Gateway Markers
-  Plaza / Open Space Activation
-  Temporary Street Activation
-  Public Art

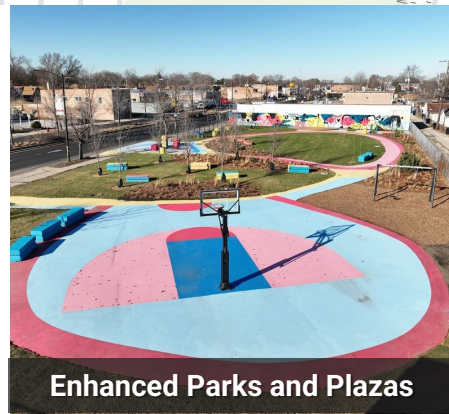
Proposed locations are conceptual and subject to change pending further studies and community engagement.



Community Branding / Gateway



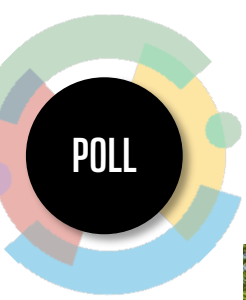
Public Art



Enhanced Parks and Plazas



Temp. Side Street Activity



Which three **Placemaking** strategies would you prioritize on 95th St.?



1. Community Gateway & Branding



2. Public Art



3. Enhanced Plaza / Open Space



4. Temporary Side Street Activation



5. Sidewalk Painting

Other ideas to signal community pride? Please type them in the chat.



Technology



Corridor Plan



Planned Improvements

- CTA Red Line Extension
- Bus EV Charging

Proposed Improvements

- Transit Signal Priority
- Public Safety Kiosks
- Public WiFi Beacons
- Pedestrian Crossing Beacons

Proposed locations are conceptual and subject to change pending further studies and community engagement.



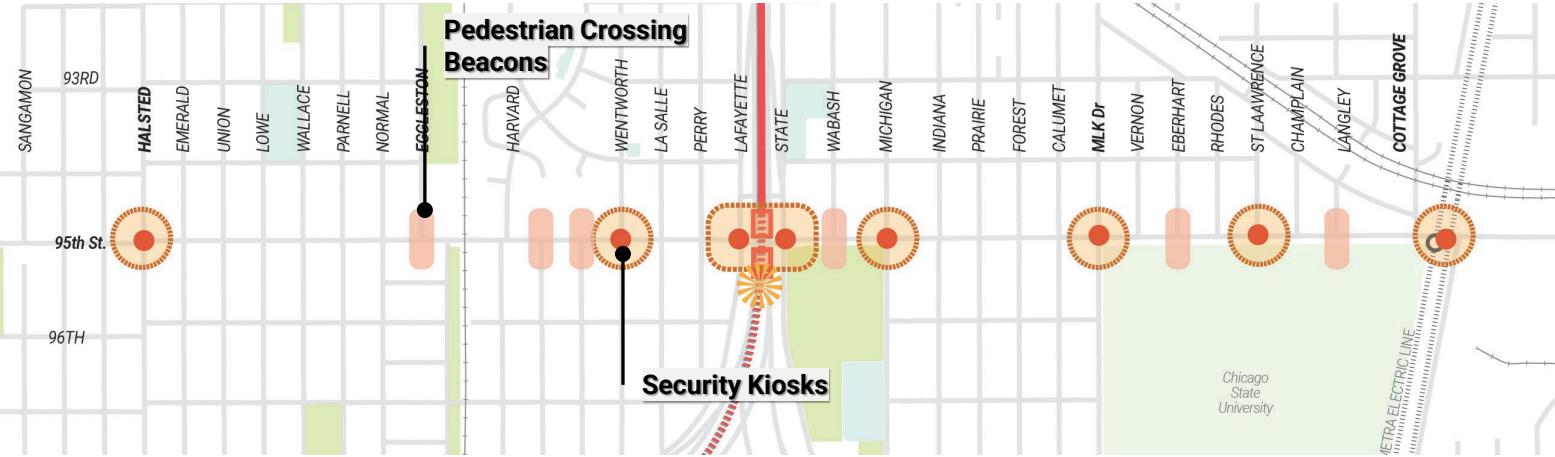
Security Kiosk / Public WiFi



Technology



Corridor Plan



Planned Improvements

- CTA Red Line Extension
- Bus EV Charging

Proposed Improvements

- Transit Signal Priority
- Public Safety Kiosks
- Public Wifi Beacons
- Pedestrian Crossing Beacons

Proposed locations are conceptual and subject to change pending further studies and community engagement.



Security Kiosk / Public WiFi



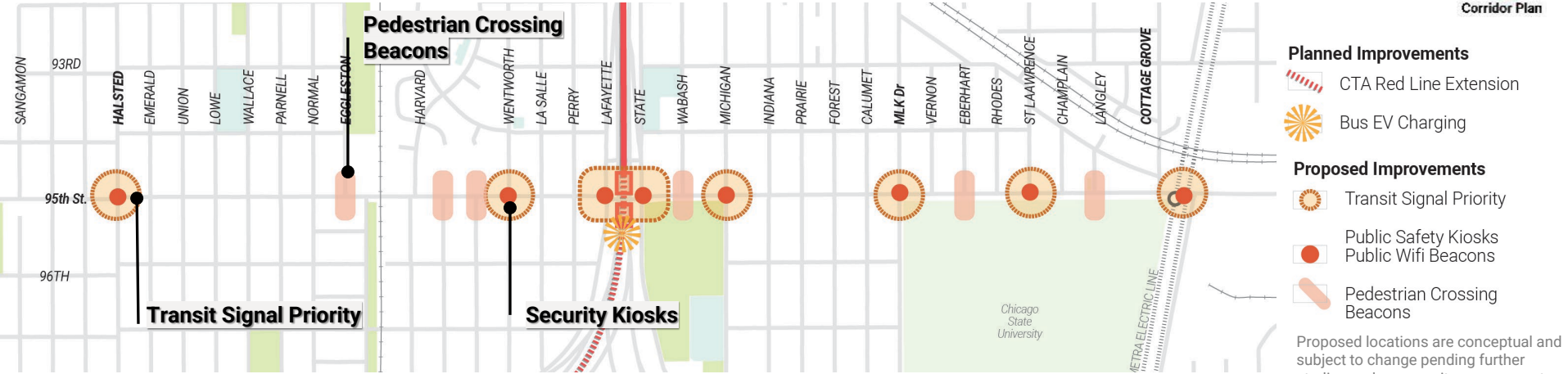
Pedestrian Crossing Beacon



Technology



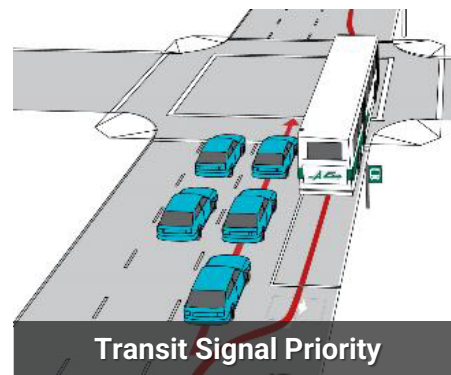
Corridor Plan



Security Kiosk / Public WiFi



Pedestrian Crossing Beacon



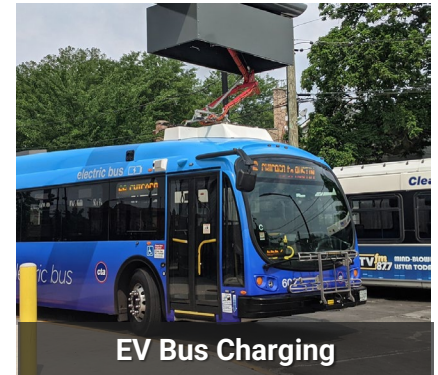
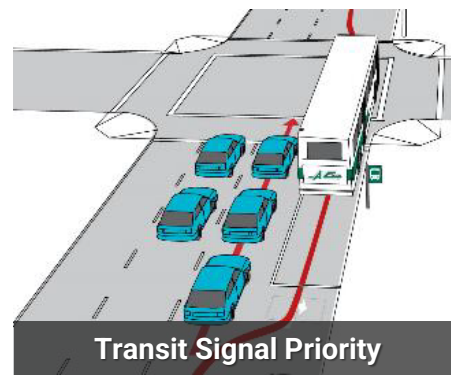
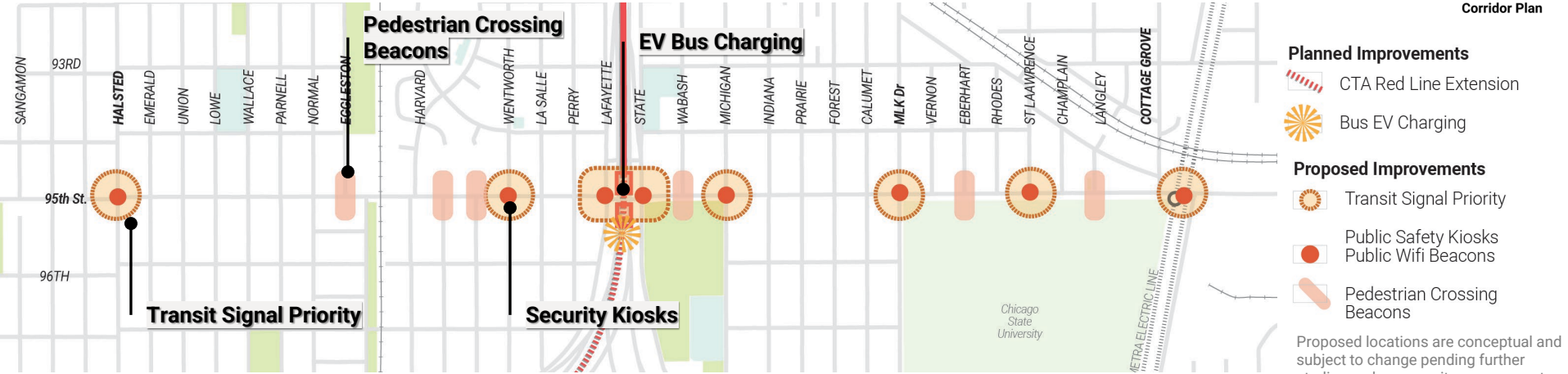
Transit Signal Priority

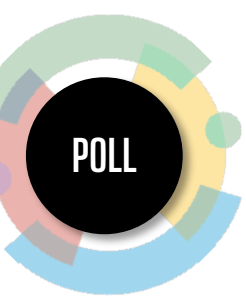


Technology

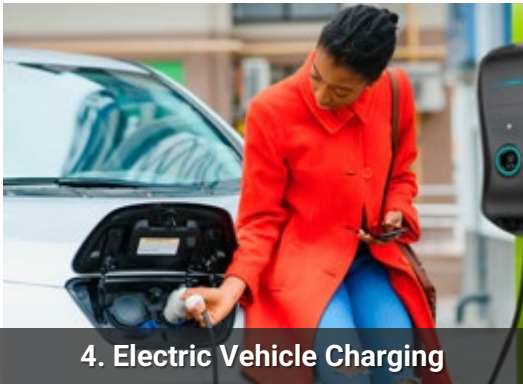
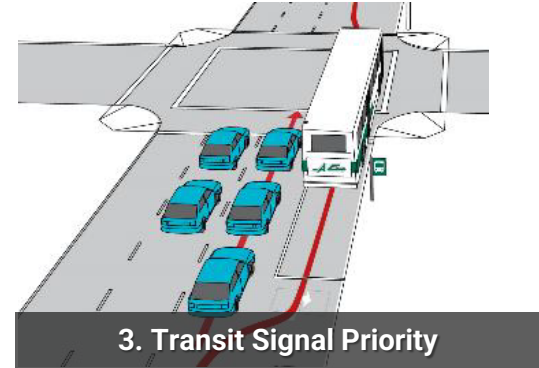


Corridor Plan





Which three **technology** improvements would you prioritize on 95th St.?



Other technology ideas? Please type them in the chat.

Next Steps

Walking
Workshops



Sign up for a walking
visioning workshop
May 18, 2024
Spaces are Limited!

Save the
Date



**Land Use & ETOD
Public Meeting**
July 10, 2024
6 – 8 pm

Complete the
survey



The survey from
the meeting today
is available to take
on our website:
Chicago.gov/95th

Follow



Follow us on
Instagram
[@95thstplan](https://www.instagram.com/95thstplan)

Learn More





Corridor Plan

Thank
You!